

Rowde Village News



October/November 2023

CALNE MUSIC & ARTS FESTIVAL



ART EXHIBITION (7th to 14th October 2023)

Each year Marden House in Calne hosts an impressive Open Art Exhibition, presenting the works of predominantly local Artists. Nearly all works are for sale and the exhibition boasts some reputable names, making this a must for art enthusiasts and collectors alike.

The exhibition presents hundreds of pieces from beginners to internationally exhibiting artists from in and around Calne.

Displayed in Marden House, the exhibition is a must for artists and art lovers alike.

Opening times:

Saturday 7th: 10:00am – 4pm -
(Please note the Family Day will be in progress and some artworks may be obscured)

Sunday 8th: 10:00am - 02:00pm & 04:00pm – 05:00pm

Monday 9th to Friday 13th :
10:00am – midday and 01.15pm – 05:00pm

Saturday 14th: 11:00am - 05:00pm –
Free Artists Talk 10:00am - midday

Sunday 15th: Exhibition closed

including Rowde artists



Editorial

Welcome to this bumper edition of the Rowde Village News.

There are all the usual excellent reports and articles from the village's schools, clubs, societies and other organisations of course but there are also many additional interesting items covered in this issue.

Especially relevant at the moment is the 'Buzz about Bees' article on page 23 which actually isn't about bees but is about the dreaded Asian Hornets that are threatening us and our wildlife right now!

It's now 14 months since we were able to celebrate our success in Saving Furlong Close and life at the Close is going from strength to strength! The Close was host to a highly successful fete on 12th August (see pages 27 & 28) and I am already looking forward to their next big event which will be a Christmas Market on 2nd December. See their poster on the inside back cover.

And the really exciting news from Furlong Close is that the Mind Tree Cafe are making plans to take on all of the areas of the site not presently being used by Agincare. Read all about it on pages 26 and 27.

A must read for all of us is the top tips for staying safe online featured on page 16.

Anyone interested in the Rowde of old may want to see on page 29 the superb old photographs from the late Rowde historian Barrie Barrett's collection sent in by Di Buckland.

Finally, support workers are still urgently needed at Furlong Close. Please see page 8 for details if you are interested in helping (I work part time there myself and find it very rewarding).

Mind how you go, Ed

This magazine is brought to you thanks to Jam Print Design & Printing and all the advertisers

Notice to contributors & advertisers

This magazine is generally printed in black and white in hard copy and delivered free to every home in the parish but additionally it is hosted on the **Village website** in full colour. If anyone does not wish any particular details (photographs, names, contact details, etc) to appear on the World Wide Web then they are advised not include them in their submissions, thank you.

Contributors please also note:

The deadline for articles and any changes to advertisements is the 15th of every second month.

Inserts: Due to the extra work created by inserting leaflets into the magazine and the fact that the team is already stretched, we very much regret we are unable to accept requests of this nature except in very special circumstances, when there will be a small charge.

Views expressed in this magazine are those of its contributors. They do not necessarily represent the views of the magazine's editorial team.

Contents

October/November 2023

Rowde all about it (pages 4 & 5) *News and views from village clubs and organisations*

Rowde Book Club (page 6)

Rowdey Cow News (page 7)

Rowde Primary Academy (pages 10 & 11)

Silverwood School (page 12)

Rowde Parish Council (pages 14 & 15)

The St Matthew's Pages (pages 18 & 19)

inc. Church Rotas and details of Services and Events

Fun Column & Photo Fun (page 21)

The Buzz about Bees (page 23)

Local News (pages 24 to 28)

Photo Memories of Old Rowde (page 29)

....and did you know (page 29)

Your PCC (page 33)

Laura Mayes (page 34)

Village Diary (page 41)

Letters (page 42)

Sudoku (page 44)

Quick Reference List of Advertisers (page 44)

Quick Reference Contacts and Village Guide (page 45)

The Magazine Team

Alan Watters (Editor)

Tel: 01380 724788

Email: watters.alan@gmail.com

Suzan Jackett (Assistant Editor)

Tel: 01380 729791

Email: suzijj@rocketmail.com

Julie Baker (Advertising Manager)

Tel: 07796690413

Email: juliebaker72@yahoo.co.uk

Sue Scruse (Distribution Manager)

Tel: 01380 729488

Email: scrusefamily@aol.com

Cover Images

Thanks so much to Tom Humphreys for sending in the wonderful aerial photographs we have featured on the front and back covers.

Can you see where you live on the back cover? And yes, all the locks shown in the front cover shot are in the parish of Rowde!

ROWDE LADIES CLUB

On August 15th the ladies met in the Village Hall and had a very interesting talk by a librarian from the Devizes Library. Members were surprised at the variety of different things the library service provide which we were unaware of. We were pleased to welcome a new member and hope she will enjoy coming to our meetings.

Raffle winner was Mrs R Stevens

On September 12th, again in the Village Hall, members were pleased to welcome Mr. David Dawson from the Devizes Museum who gave a most interesting visual talk on Stonehenge and the gold they have found in the various Barrows around the area.

Raffle winner was Mrs C Sault.

Next meeting will be held on October 10th in the Village Hall at 2.30pm when we will hopefully be learning Sign Language over a cuppa and cake!

Di Buckland

ROWDE VILLAGE HALL

A FEW JOTTINGS FROM BARRIE AND CYRIL'S ARCHIVES!

August 20th 1874

On Monday last, a young lady (Miss Emma Wallace) who is on a visit to Mrs Davidson at Rowde was walking along Marsh Lane, when a swarm of wasps which had been disturbed by some boys, settled upon her. Mr Romain of Devizes happened to pass at the time, and seeing what had befallen Miss Wallace, at once rendered assistance and succeeded in getting the wasps off her head and face. Her hair was literally massed with them. She is, however, we are glad to hear, recovering from the effects of the stings.

September 12th 1878

DEVIZES BATHING PLACE - Entrance near Bath Road Bridge. The Bathing Place is now open.

FROM 6am to 9am. ADMISSION One Penny. Monthly Tickets One Shilling

FROM 9am to 5pm. ADMISSION Threepence. Monthly Tickets Two Shillings and Sixpence 2s 6d

FROM 5pm to Dusk ADMISSION FREE
Tickets can be obtained from the Bathing Place

February 26th 1903

INVITATION DANCE - A very pleasant evening was spent at the Institute (now the Village Hall) on Monday Evening when between 60 and 70 responded to the invitation to the dance. The arrangements were made by a small committee consisting of Mssrs P E Penny, P W Mulcock, W Mantell who are to be congratulated on its success. The room had been simply but artistically adorned, indeed the decorations were really the beauty of the room. The ladies were charmingly, yet for most part, simply gowned and when the dance was in full swing, the scene was a pretty one. The programme consisted of 21 dances and extras. The music which was supplied by Mrs

Harris (piano) and Mr Allen (Violin) being quite-up-to-date. Dancing was kept up with much high spirit until 3.30 on the following morning.

Di Buckland

MONDAY CLUB NEWS

Bromham and Rowde Day Centre for Older People

See our poster on the opposite page!

We were very sorry to say goodbye to Caroline at the end of July. We presented her with a cheque, hoping that she'll buy something to remind her of her Monday Club connection and all shared a delicious cake at coffee time. We've heard that Caroline is enjoying being in beautiful Shropshire and especially being able to walk to the shops from her home in Ludlow! She's completed her training and is beginning to work as a Carer in the area.



On 9th September, between 10.30 and 12.30, we are holding an Autumn Coffee Morning in the Clubhouse to raise funds for the club. Please come along and support us, there will be delicious cakes to eat with your coffee or tea and also a Bottle Bingo – all sorts of goodies to win!!

We would like to have more members at Monday Club so why not come along and see what were all about. Maybe just come for coffee at 10.00 and enjoy the morning with us. You may have seen a couple of Serena's amazing desserts on Spotted in Bromham – they taste just as good as they look!

The Club would like to thank the organisers of the Netherstreet Plant Sale for their very generous donation to our funds. We plan to use this for something special.

To find out more about the Monday Club, please contact Carol - 01380 850925 cmhindle@outlook.com

GOOD FOOD, GOOD COMPANY AT MONDAY CLUB

I look forward to
Mondays!

It's so friendly
and welcoming!

The home cooked
food is delicious!

I go home smiling!

Never a dull
moment!

Why not come along and join us? To find out more about Monday Club, please contact :
Carol - 01380 850925 or Cathy - 01380 850555

ROWDE BOOK CLUB

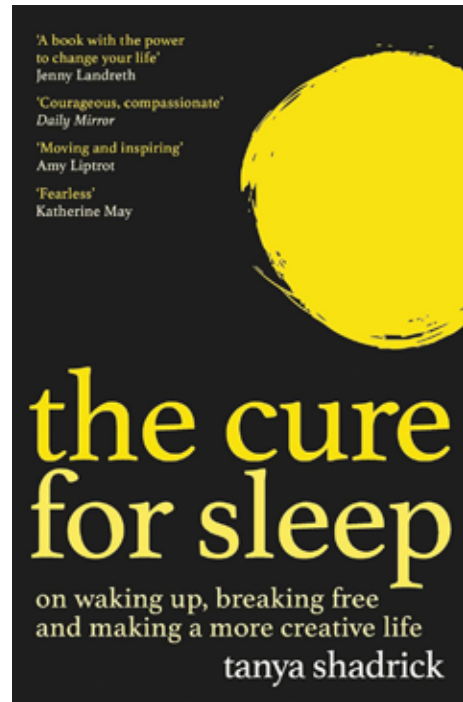
Meetings are generally held on the fourth Wednesday evening of the month. Contact Ann on 01380 724788 for further info.

BOOK REVIEW *'The Cure for Sleep'* by Tanya Shadrick

We all had high expectations for this memoir as it had received so many positive reviews. However, it reminded us that just because someone else has enjoyed a book, it doesn't mean that we necessarily would! The majority of us felt that reading to the end was an endurance test, so it was not a book that we could say that we enjoyed reading. We agreed, however, that it had been well written, albeit with a style that at times felt old-fashioned and over-worked.

The author is brutally honest in her description of the decisions she made as an adult after her life-changing near-death experience of a haemorrhage after the birth of her first child. While she describes her difficult childhood we found it difficult to sympathise with her or to accept the rather selfish and self-centred person she became. She was obviously driven towards artistic expression through writing and had some success through various artist residencies but this was often at the expense of the relationships with the people she loved and who loved her. We could not help but wonder what impact this honest memoir would have had on those people (her husband, her two children, her friends, her mother).

Suzanne Jacobs



Dolman Audio Visual

Berhills Lane Farm, Sells Green, Seend

provides

**reliable and effective repairs
& maintenance to Hi-Fi &
video equipment**

by knowledgeable and friendly technical staff
at our well-equipped service department

Please contact

Maggie or Peter

Phone/Fax: 01380 828524

Email: peterdolman@btconnect.com

T O'ROURKE

All plastering work undertaken

No job too small

FREE ESTIMATES



Contact Troy on:

01380 698993

or 07968 634689

ROWDEY COW NEWS



We have enjoyed a lovely busy summer at the Rowdey Cow despite the poor August weather. Then typically just as the schools went back the sun came out! It didn't last long though and we are looking at another week of rain this week! The ice cream cabinet is back inside the café so you don't have to go outside for your ice cream now.

Jefferson's mini fair was a hit with the younger customers over the holidays when the rain didn't stop play! We attended some lovely events including the Fulltone Festival in Devizes where we were able to enjoy the music as well as sell some ice cream!

We have a fantastic new chef, Rush, that we have welcomed to the Rowdey Cow Team who is busy preparing some new menus and starting to look towards creating our Christmas menus too! His Sunday roasts have proved particularly popular along with his chocolate brownies.

The function barn is in full swing where we have helped celebrate golden wedding anniversaries, birthdays and even a cow girl hen party!



We will be launching our Christmas menus and events over the next few weeks on our website and face book page. Halloween is next on our agenda so we will be preparing our pumpkin trail and events.

Sue

HIRING NOW

INCLUDING VACANCIES AT FURLONG CLOSE IN ROWDE!

0800 0588 515

APPLY TODAY



Est. 1986
Agincare
CAREERS

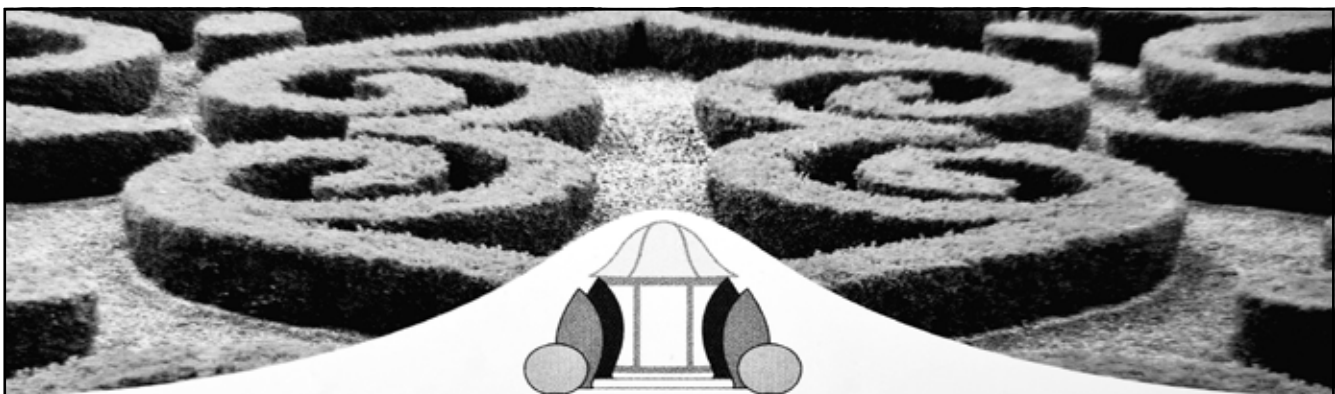
GRAY & AMOR LTD.

CARPENTRY & PROPERTY RENOVATION

Covering all aspects of property renovation and maintenance. View our range of services online or call to discuss your project.

01380 587006 / 01672 596006

info@grayandamor.co.uk www.grayandamor.co.uk



JHS

Garden Services

Email: jhsgardenservices@yahoo.com

Tel: Mark 07368 425618

mander duffill

— Est 1947 —


CHARTERED ACCOUNTANTS
TAX & FINANCIAL ADVISERS

WHAT WE OFFER:

- Accountancy and Tax Services
- Tax Compliance, Planning and Advice
- International Tax Planning and Advice
- Business Sales and Acquisitions
- Company Restructuring
- Company and Business Start-ups
- Management Accounts, Bookkeeping and VAT Services
- Payroll and Auto Enrolment
- Research and Development
- Financial Services
- Investments
- Protection
- Inheritance Tax Planning
- Pensions and Retirement Planning


GET IN TOUCH:

 info@manderduffill.com

 01249 650441

 The Old Post Office
41-43 Market Place
Chippenham SN15 3HR

DEVIZES OFFICE

 01380 711441

 45 New Park Street
Devizes SN10 1DT

Offices also in Malmesbury
and London



www.manderduffill.com

NEWS FROM ROWDE PRIMARY ACADEMY

Our bright start leads to their bright future

At Rowde C of E Primary Academy, we have had a brilliant start to the new school year welcoming new families, and families back, after the long summer holidays. September is a huge transition for everyone, but we've done everything we can to focus on the children and get straight into the brilliant learning and opportunities our curriculum has to offer!

I'd like to take this opportunity to welcome our new families and children who have come into our Reception class – we are so proud of how quickly they have settled, going to full days after just three half days and starting their learning with optimism and determination. Mrs Alford, our Reception teacher, has totally overhauled the classroom and it looks amazing. It is very natural and full of great trinkets, including a dresser, a sandy suitcase, amazing outside space and it always smells delicious with the natural potions they've been making (lavender, citrus, herbs)!



We have set up our Year 6 buddies already, and our eldest pupils are already supporting our youngest pupils in a number of different ways.

NEWS FROM ROWDE PRIMARY ACADEMY (cont'd)

Our bright start leads to their bright future



Buddies

We have also welcomed a new, experienced, teacher for Ash class. Mrs Rachel Hipkin-Fox joins us from a large, very good, local primary school and is our SENDCo, Writing Lead and a member of the Senior Leadership Team. We are a small but very strong community and it is really clear that we all share the same vision, values and determination to do the best for the children.

In our classrooms, we have started our topics for the term, based on high-quality, engaging and challenging books – we ensure reading is at the heart of our curriculum.

- Birch Class: All about Me with a range of texts including *Stick Man* by Julia Donaldson, *Ruby's Sword* by Jacqueline Veissid and *Welcome to our World* by Moira Butterfield
- Ash Class: *Changes through Living Memory* and *Grandpa was an Astronaut* by Jonathan Meres
- Maple Class: *London and The Royal Rabbits of London* by Santa Montefiore
- Cedar Class: *Ancient Greece* and *Who Let the Gods Out?* By Maz Evans
- Oak Class: *WW1 (Battle of the Somme)* and *War Horse* by Michael Morpurgo

We have chosen our Head Girl and Head Boy, alongside their deputies. They wrote applications and had interviews to share why they'd like the positions and the changes they'd like to make to our school.



Head girl and head boy

Our House Captains were chosen by a democratic vote and we have some Student Council leaders, too.



House captains

We hope that the pupils at Rowde really feel that they are instrumental in the decision making and ongoing positive changes we've made.

In our community room, we've started a community library. You can access it any time via the front door and you can take a book or two and return them, or do a swap. There are lots of picture books, books for children of all ages and a handful of adult books, too. Many of the books are really lovely and deserve to be read! We hope that it will be useful, and please pop in and use it if you need to.

As the term goes on, we have a harvest festival, nativity, discos, a whole-school trip to the pantomime amongst other trips and visits to Dauntseys for dance, forest school and science. We will try to ensure that any community events are well-publicised if you would like to join us. For any of you in the village who have children who are set to start in September 2024, the please come along to our open morning and/or evening to see our brilliant school and meet some of the team. Alternatively, if you have children of any age and would like to see us in action, then please join us for our Reading open morning.

As always, we have an open-door policy at Rowde, and you are always welcome to come and have a visit. If you feel you have any skills or connections, or if you'd like to spend time with us, please do get in touch. I have also spent a lot of time updating the school website and it is now a wealth of information about us as a school, the classes and curriculum and our vision, values and ethos. If you have minute, do take a look: www.rowde.wilts.sch.uk

Alice Simpson, Head Teacher

NEWS FROM SILVERWOOD SCHOOL - ROWDE CAMPUS

Building Community, Inspiring Learning

Executive Headteacher - Mr Sean McKeown



Our value for this term is Co-operation, perfectly demonstrated by two of our pupils.



Co-operation

Over the summer holidays we have had two new mobile classrooms put onto site either side of the drive way. This is to accommodate our extra classes including our new Early Years Class - Saplings.



Inside new build



New build



One of the mobile classrooms

The back of the house has had some additional scaffolding ready for its renovation, and the new build has now got its windows and is now water tight.



The animals are in school which the pupils love, we are looking forward to our sponsored journey at school, photos to follow in the next edition.

Teresa Ollerhead



Rob Hunt DipPFS

Phone

07970 256287

Email

rob@mwfs.co.uk

Location

Devizes, Wiltshire
Home visits available



**Free initial
consultation.**

**Free financial
health check.**



Trusted Unbiased Financial Advice

Plan today for a better tomorrow

My expertise

- Investment Planning
- Inheritance Tax Planning*
- Retirement Planning
- Mortgages & Protection
- Equity Release

*Inheritance Tax Planning is not regulated by the Financial Conduct Authority.

About me

With 30 years of experience in financial services, I'm passionate about helping individuals and families reach their financial goals. I prioritise building long-term relationships with my clients based on trust, integrity, and personalised advice.

My transparent, easy-to-understand guidance enables you to make informed decisions and achieve greater peace of mind. Contact me today for a fee-free consultation.

Michael Williams Financial Services Ltd, 15c Vine Street, Evesham, Worcs. WR11 4RE
Tel: 01386 422461 Web: www.mwfs.co.uk
Michael Williams Financial Services Ltd is an appointed representative of The Whitechurch Network Ltd which is authorised and regulated by the Financial Conduct Authority.
Registered in England & Wales No: 5263058

Your Parish Council

Please visit the rowdevillage.org website, the Rowde Parish Council Facebook page and the village noticeboards for a full set of minutes and confirmation of forthcoming Parish Council meetings.

If you would like to receive a hard copy of the minutes, please contact the Parish Clerk.

The Parish Clerk can be contacted by email: rowdeparishcouncil@gmail.com or on: 07752 724096

Parish Council Meetings

The Parish Council did not meet in August or September 2023.

The next Parish Council meeting will be on Wednesday 11th October 2023, 7.30pm, in Rowde Village Hall. Everyone is invited to attend.

Chairman

Philip Brown has left Rowde Parish Council. We say a huge thank you to Philip for his leadership and contribution over the past couple of years. Philip will be missed by everyone on the Council.

Lisa Wills is Acting Chairman. A Chairman can be elected at the next meeting.

Playgrounds & Play Areas

Rowde Parish Council has refurbished the Silverlands Play Area new play equipment. We hope that the young people of the village are enjoying the renovated space.

Events

We would like to thank Helen & Alan Pengelly for raising a further £43 to donate to the fete/coronation fund.

Stay Connected!

Website: Thank you to A Humphreys for managing the village website.

Facebook page: Check out the Parish Council's Facebook page for news and events.

Contacts: The Parish Clerk can be contacted at rowdeparishcouncil@gmail.com, or by telephone: 07752 724096 in office hours.

My Wiltshire App

- The more reports that are logged through 'My Wiltshire', the higher the priority the issue will be given.
- It is easy to report problems like potholes, dog mess, graffiti, litter and street lighting in your area using the 'My Wiltshire' online form. Reports can be made anonymously, or you can register for free. Once you have registered, you can track the reports you have made, and receive notification once the work has been completed. The more residents report issues, the more likely we are to have them fixed.
- The 'My Wiltshire' page can be accessed through the Wiltshire Council website at: <https://www.wiltshire.gov.uk/mywilts-online-reporting>

Concerns

If you have any local concerns about footpaths, hedges, allotments, play facilities, or anything village related, we would like to hear from you. We value your input and suggestions and will try to help.

You can contact us through the Rowde Parish Council Facebook page, or by e-mail: rowdeparishcouncil@gmail.com, or by telephone: 07752 724096.

Police Matters

If you need to report a crime: Please dial 101 to report a crime and 999 in an emergency. It is possible to follow the Police on:

Twitter <https://twitter.com/wiltshirepolice>

Facebook <https://www.facebook.com/wiltshirepolice/>

Or sign up to Community Messaging <https://www.wiltsmessaging.co.uk/>

Dates for the diary

Parish Council meetings dates can be found in the village diary on page 41 of the magazine.

We invite all villagers to attend, to observe and to make use of the public question time in the meeting.

ROWDE PARISH COUNCIL

Vacant	Chair/Planning		
Lisa Wills	Acting Chair, Social Media	rpc.lisa.wills@gmail.com	01380 730078
John Dalley	Sports & Playing Fields	jdtaxisdevizes@gmail.com	07592 063789
Pat Bryant	Planning	rpcpatbryant@outlook.com	01380 698567
Chris Stevens	Village Appearance	rpc.cstevens010@gmail.com	
Barbara Zaccarelli	Village Events	barbarazaccarelli@yahoo.com	01380 726316
Mark Somerville	Allotments, Safety	jhsgardenservices@yahoo.com	
Mandy Humphreys	Website, Social Media, Furlong Close liaison	rpc.mandy.humphreys@gmail.com	
Josh Wills	Playing fields; Youth Co-ordinator	rpc.joshwills@gmail.com	
Chris Greenwood	Neighbourhood Planning, Tree Officer, Roads & Transport	cj_g@me.com	07525 185514
Tom Humphreys	Speed Indicator Device	rpc.tomhumphreys@gmail.com	
Rebekah Jeffries	Clerk	rowdeparishcouncil@gmail.com	07752 724096

Wiltshire County Councillor for Rowde

Laura Mayes	Wiltshire Councillor	laura.mayes@wiltshire.gov.uk	
-------------	----------------------	--	--

WILTSHIRE COUNCIL - Useful phone numbers

Libraries:	01225 713000	or mobile/outside Wiltshire:	01225 777234
Parking:	01380 734812	School admissions:	01225 713010
Pest control:	01380 734721	School special educational needs:	01225 718095
Planning:	01380 734812	School transport:	01225 713004
Recycling boxes - Hills Waste:	0845 6032085	Social care – adults:	0300 456 0111
Registration - Births, Deaths & Marriages:	01225 713007	Social care – children:	01225 773500
Roads & pavements (Clarence) Freephone:	0800 232323	Street care and cleaning:	01380 734849

AUTUMN ADVANCE (a poem by Rowde's Alan Pengelly)

Morning mist hangs in the air
Swallowing familiar shapes
Beneath it cold clinging shroud
A pale sun wrestles it into oblivion
But not before surrendering
A little more vibrant green
From fading summer leaves

Another hard fought victory
For a tired weakening sun
Heralds a day of colour
That only Autumn knows
Shadows fall long and thin
From a sun too weary to rise
To it's dizzy summer heights
Strength spent again
The onslaught of Winter's
Inevitable dominion

There's a bite to the air
That takes your breath away
And sends it spiralling skywards
In a disappearing white cloud
Those who are leaving have either
Flown or preparing for southbound flight
Those who stay are putting on
Winter coats and making winter stores
Summer is but a memory
A time for reflection
Before the cloak of winter
Falls upon the land

Alan Pengelly

Bag2School






www.bag2school.com

Our next **Bag2School** collection
has been arranged for

Friday 13th October

Please leave outside from 8am we
will collect during the day.

For more information, please contact.

Rowde Primary Academy on 723991

www.bag2school.com

Craft, Coffee and Chat

at St Matthew's Church,
Rowde

Friday Afternoons
2pm – 4pm




All Welcome!

No charge to enter,
coffee and cake available
for a donation

Top 10 tips for staying safe online

The internet is an amazing resource, allowing people to form social connections and support networks, as well as accessing more information than ever before... all at the click of a button.

However, caution should be exercised when using the internet and social media as it can leave some users vulnerable to things like online scams, exploitation and the oversharing of personal information.

This said, when used correctly, the internet and social media can be excellent tools for all of us.

We've put together some top tips for staying safe online:

1. Passwords

To protect yourself and your information you should use passwords that are difficult for someone else to guess, while still relatively easy for you to remember.

Avoid setting passwords that include personal information, such as your name, birthday or email address.

A strong password should be more than six characters long and include a combination of letters, numbers, and symbols. Randomly generated passwords are the strongest, however, they are also the hardest to remember.

Try not to use the same password for every website you're using because if someone guesses it, they will be able to access all your accounts.

Remembering passwords is hard for anyone. Instead of writing your passwords on paper where someone might find them, you can use a password manager to generate passwords and store them securely online. Many password managers are available, such as Google Chrome's Password Manager, Last Pass, Dashlane and Keeper.

2. Be a selective sharer

Social media networks such as Facebook, Twitter and Instagram are great places to connect with friends and share updates on your life.

However, it is important to remember that when you share something on social media it has the potential to reach many people. It may be shared by others outside of your network and can still be seen even after you've deleted the post.

Therefore, be careful about sharing personal information that could leave you vulnerable. Never reveal your address, personal telephone number or bank details on social media. Be cautious about posting photographs of yourself on social media and, if you're unsure whether a photo is suitable consider asking a friend or family member what they think first.

3. Privacy settings

Different social media networks have their own privacy settings. You can usually find these under 'settings' or 'options' on your profile.

It is advisable to set your privacy settings to enable only 'friends' or 'followers' to see what you post. Otherwise, anyone can visit your profile and see everything you have shared.

It's important to remember that setting your profile to private doesn't mean that your posts can't be seen by others outside of your network. One of your friends could share the post to their network, for example, so remain cautious about what you're sharing.

4. Be careful who you're talking to

One of the biggest advantages of the internet and social media is the ability to communicate with people from all over the world. It's a great way to connect with others, seek support and share information.

However, this comes with its own issues and may leave you vulnerable to exploitation.

Unfortunately, a small minority of people see the internet as an opportunity to take advantage of others. They may pretend to be someone they're not to extract personal information or convince people into doing things they don't want to do.

Never send any personal information to someone you have never met in person; this includes telling someone where you live or giving them your bank details.

Never send anyone a photo or video that could leave you in a compromising situation. For example, a photo that exposes intimate areas or a video of you doing anything you wouldn't want other people to see. If anyone is pressurising you to send a photo or video, close the chat and report them.

5. Meeting people in 'real life'

Sometimes friendships formed online can develop into an offline relationship. The rise of online dating has contributed to this and can be a very helpful way to connect with others. However, extreme caution should be taken when arranging to meet someone in 'real-life' for the first time. The following should be applied:

- Always arrange to meet in a busy public place, such as a café.
- Always tell someone else who you are meeting, where you are meeting and at what time. Keep them updated so they know everything is okay.
- Never meet anyone if you don't feel comfortable doing so.
- Never feel pressured into doing anything you don't want to do.
- If possible, take a friend or family member along to the first meeting.
- Ask for help if things aren't going well.

6. Avoid online scams

When using the internet, it's important to be mindful of things that don't seem right.

Remember, if something sounds too good to be true, it probably is!

Sometimes it can be hard to know whether something is genuine or not. If you're unsure, get a second opinion from a family member or a trusted friend or colleague.

Some common scams include:

- Emails from addresses you don't recognise asking you to click on a link – these may say you've won a large amount of money or that you need to renew a subscription or TV licence by clicking the link.
- Requests for money – these may advise you to transfer your money into another account. Never send or transfer your money in response to these emails, instead contact your bank.

7. What you see on the internet isn't always true in fact, a lot of it isn't!

Many websites spread untrue or exaggerated news stories, often called 'clickbait' or 'fake news', to encourage people to click on their links. Don't assume the first thing you read is true, instead be open to reading different sources to get a more accurate overview.

It's also worth bearing in mind that the posts your friends are sharing might not always give a true representation of their lives.

8. Respect other people

Occasionally on the internet people forget that behind every post is a real person.

Your comments could upset someone without you even realising, so don't say anything to anyone online that you wouldn't say to their face. **Think before you post!**

9. Report any issues

You should never accept being abused, bullied or harassed online. There are people to talk to if this is happening.

- Most social networks have an option to report someone. You will usually be asked to pick from a selection of options saying why you are reporting that person. After reporting, you may be given an option to 'block' that person so they can't contact you anymore.
- Tell a friend, family member or a trusted friend or colleague if you are worried about anything online.
- Abusing someone online is a criminal offence and you can report online abuse to the police. Contact your local police force by calling 101.
- Online scams can be reported to www.actionfraud.police.uk

10. Keep a healthy balance

The internet can be addictive and it's important to strike a healthy balance between the online and offline worlds.

Try not to spend hours endlessly scrolling through Facebook or Instagram to the detriment of getting out and meeting people in 'real-life'.

Consider doing an activity that doesn't involve the internet, such as a sport or hobby.

GAIGER BROTHERS LTD

Building Contractors

6 Northgate Street, Devizes, Wiltshire SN10 1JL

Tel: (01380) 722412

Fax: (01380) 727890

The Wiltshire Bobby Van Trust



Registered Charity No 1153790

The Wiltshire Bobby Van Trust provide a Courtesy Home Security Service for elderly, vulnerable and disadvantaged people living in Wiltshire, who have become, or are at risk of becoming victims of house crime or domestic abuse.

Our operators will carry out a full security and fire risk assessment before fitting the appropriate security devices. If you are over 60 or vulnerable due to a mental or physical disability and don't feel that you have adequate home security please contact us to arrange a visit.

Tel No: 01380 861155 Email: bobbyvan@wiltshire.police.uk
www.wiltshirebobbyvan.org.uk



BEWLEY

Funeral Directors Limited

Our family are here for your family

Devizes local family funeral service EST. 1970

Three generations of experience, personal values and professional service

24 Hour Service | Home Visits | Simple or Bespoke Funerals | Pre-paid funeral plans | memorials

Devizes 01380 728008

Office & Chapel: 64 New Park Street, Devizes, SN10 1DP
Over 100 reviews at www.bewleyfunerals.com



October & November Worship in Rowde, Bromham and Sandy Lane

Services in St Matthew's, Rowde are in bold.. Services in Bromham and Sandy Lane are in *italic*.



Please visit our website, for the latest information on our services:

Everyone is very welcome at all our services

Date/Time	Service
October 1 8.00 am <i>10.00 am</i>	Trinity 17 Holy Communion BCP (Book of Common Prayer), Rowde <i>Holy Communion, Bromham – Harvest Festival</i>
October 8 <i>8.00 am</i> 10.00 am	Trinity 18 <i>Holy Communion (BCP), Sandy Lane</i> Holy Communion, Rowde
October 15 <i>10.00 am</i>	Trinity 18 <i>Holy Communion, Bromham</i>
October 22 <i>8.00 am</i> 10.00 am	Trinity 20 <i>Holy Communion (BCP), Sandy Lane</i> Holy Communion, Rowde
Thursday 26 6.00 pm	All Souls Service of Commemoration, Rowde
Friday 27 <i>6.00 pm</i>	All Souls <i>Service of Commemoration, Bromham</i>
October 29 10.00 am	Bible Sunday Holy Communion, Rowde
November 5 8.00 am <i>10.00 am</i>	All Saints Holy Communion BCP (Book of Common Prayer), Rowde <i>Holy Communion, Bromham</i>
November 12 10.00 am 3.00pm <i>3.00pm</i>	Remembrance Sunday Holy Communion, Rowde Remembrance Sunday Service, Rowde <i>Remembrance Sunday Service, Bromham</i>
November 19 <i>10.00 am</i>	2nd Before Advent <i>Holy Communion, Bromham</i>
November 26 <i>8.00 am</i> 10.00 am	Christ the King <i>Holy Communion (BCP), Sandy Lane</i> Holy Communion, Rowde
December 1 8.00 am <i>10.00 am</i>	Advent 1 Holy Communion BCP (Book of Common Prayer), Rowde <i>Holy Communion, Bromham</i>

Please visit our website, for the latest information on our services: <https://www.achurchnearyou.com/church/9690/> or check the Church notice board for further information

sarahbromhamandrowde@gmail.com 07876142112

Church Opening Times

The churches within our Benefice are also open

for private prayer on the following days.

Rowde Church - Monday to Saturday 10am – 4pm.
Sundays 10am-4pm or after the morning service.

Bromham Church - Daily between 9am and 5pm

Sandy Lane Church - Daily between 9am and 5pm

A Message from Revd. Heather

The summer seems long gone now as we head into the depths of autumn. The end of summer always makes me feel sad, as we head into darker nights and colder weather. The easy days of July and August are over – even if it rained, at least it was warmer! We were blessed with that warm spell that so often happens at the beginning of September, but seems to emphasise the colder weather to come. Endings are difficult – especially when the time that's ending has been enjoyable. We face the loss of what was good. But with endings come new beginnings, and autumn brings new ventures, with new school years and perhaps a new focus at work after summer holidays now a distant memory.

We still await a new Rector, but the post was advertised again in September and we hope to have applicants to interview in November. We very much hope that we can welcome someone next year – another exciting new beginning!

God is a champion of new beginnings. There is always an opportunity to begin again. No matter how badly (or well) things have gone in the past, God encourages us to learn from it, put it behind us, and to embrace new challenges and find new joys.

Revd Heather Smith

Associate Priest

Rowde and Bromham

Regular Activities

Rowde Church Café on Tuesdays 10.45-12:00

Come and join us for coffee, cake and time to chat. Everyone welcome.

Craft, Coffee and Chat at St Matthew's Church, Rowde

Friday Afternoons 2pm – 4pm

Bring your own craft to do, or join in with our jigsaw All Welcome! No charge to enter, coffee and cake available for a donation.

Souper Saturdays at St Matthew's, Rowde.

First Saturday of the month, 12 noon to 1pm. Come along and enjoy a choice of two soups (always at least one vegetarian choice) with a roll. Donation in aid of St Matthew's welcomed. Next dates: Saturday 7th October and 4th November.

Growing in Faith are meeting on Wednesday evenings via Zoom. If you are interested in joining us on Zoom fortnightly on Wednesday 7:30-9pm (school term time only) please contact Ruth on ruthbray@outlook.com, so she can send you the Zoom links.

Mothers Union at St Nicolas Church, Bromham

at 14.00 – 15.00 on 15.07.2023, 12.10.2023, 09.11.2023 and 14.12.2023 - Carole Myer: 01380 850706 or ed.myer@btinternet.com

Flower Arranging, Rowde: Caroline Keevil: ck@carolinekeevil.co.uk 07860 148407

The altar flowers are a permanent display.

Anyone wishing to place fresh flowers in the church is very welcome to do so.

Choir at St Matthew's, Rowde

We practice from 6pm-7pm on the Fridays prior to a 10am Sunday service.

Please contact Nicola Brown: nicola_brown@talk21.com 01380 722406

Bellringing at St Matthew's, Rowde

Please contact Michael Cornwell: michael.cornwell@btinternet.com 07388 224129

Open the Book - Rowde: Fran Hall: 07989758412

Contact Details

Rector: Vacant

Associate Priest: Revd Heather Smith
07702 113544 revheathersmith@gmail.com

Benefice Administrator: Sarah Bowler
07876 142112

sarahbromhamandrowde@gmail.com

Safeguarding Representative for Bromham and Rowde: Phil Bayley: 01380 859569

During the vacancy please contact Revd Heather Smith for Baptisms, weddings and funerals.

Website: A Church Near You

<https://www.achurchnearyou.com/church/9690/>

Benefice Facebook page: Churches of Rowde and Bromham

<https://www.facebook.com/groups/439328832796693/>

Souper Saturdays

at St Matthew's, Rowde

First Saturday of the month

12 noon to 2pm

Come along and enjoy a choice of two soups (always at least one vegetarian choice) with a roll



Donation in aid of St Matthew's welcomed

Next dates:

Saturdays 7th October & 4th November

EATING OUT & ABOUT Farm Shop and Kitchen

The Gourmet Goat Farmer Farm Shop and Kitchen - The home of all things goat! Our Farm Larder and Cafe is open and we look forward to your visit. Located just outside the historic village of Avebury, our farm Larder is home to our bijou cafe space and well-stocked Larder, home to all things goat.



From goat meat and cheeses to organic goat's milk and soothing goat milk soaps – you can find lots of wonderful produce here at our shop. Look for our sign on the A4361 just north of Avebury.



Footnote: We ate there recently. The food was excellent and the beautiful and tranquil surroundings made it a great trip out. Ed

LOCAL HONEY FOR SALE

Rowde Hall Cottage
High Street, Rowde SN10 2PL
(Opposite Cross Keys)
01380 722406
davidb.rowde@gmail.com
£5 for a 12oz jar (340g)



FREE CAT NEUTERING



Do you want to
neuter your
kittens
and
cats?



You know it's the right thing to do, and..
we are here to help you!

RSPCA Wiltshire Mid Branch

will pay, for a limited period, the cost of neutering and, at the same time, micro-chipping your cats and kittens if you live in **Devizes, Melksham, Westbury or Warminster** or the surrounding villages.

To apply for financial help to have your cats neutered, and, if you wish, micro-chipped at the same time, please send a blank e-mail to cnwiltsom@gmail.com. We will reply with a link to the application form. If you prefer you can telephone 07494-240622

YOU CAN APPLY FROM 25TH FEB. UNTIL 30TH APRIL 2020



Wiltshire Mid Branch
Registered charity no. 205925

Working together
to help you
and your pets



Registered charity no. 203644

Wiltshire Buildings Record, a charity that has a growing and very detailed database of the county's vernacular buildings – and which is based at Chippenham's History Centre – is seeking new members.

For further details please go to www.wiltshirebuildingsrecord.org.uk/membership/ Organisations such as local history groups are charged £25 per annum, whilst individuals pay £14.

Please help us identify and study historic buildings throughout the county.



FUN COLUMN

This issue we have some farming jokes:

A man was arrested yesterday after falling into a combine harvester whilst trying to steal it! He's due to be bailed tomorrow!

How do aliens harvest their crops? With tractor beams.

How did the stand-up comedian get a degree in agriculture? He got a job on a funny farm.

What did the farmer's wife say when her husband suddenly drops to the ground while harvesting his lettuce field?

His wife runs over and screams; "I think he's having a Caesar!"

Starting your own garden is easy, but picking all of the vegetables, that's the harvest part.

How did the farmer find the missing cow? He tractor down.

How did the farmers get the highest marks in a mathematics exam? They used pro-tractors.

What conversations does the farmer have with the cow while milking? Udder nonsense.

What should the farmer say to a cow when it is in his way? "Mooooove!"

What did the farmer say when one of his cows went missing? "Oh! I have made a terrible miss-steak."

How does the farmer refer to his next-door horse? His neigh-bour.

Why did the farmer feed the pigs sugar and vinegar? He wanted sweet and sour pork.

Where did the farmer take the horses when they were sick? To the horsepital.

Where do farmer's kids go to study? The kinder-garden.

Why do the farmers go to watch movies but not sit till the end? They only like to watch the trailers.

Why do you think the cow jumped over the moon? Because the farmer had cold hands.

What was the result, when the farmer crossed a chili pepper and a shovel with a terrier? He got a hot-diggity-dog.

Why doesn't a farmer talk about jokes in front of a cow? Because the cow has herd them all.

What do you call a bull that always falls asleep? A bull-dozer.

Which farm animal keeps the best time? A watch-dog.

What is a horse's favorite game to play? Stable tennis.

What is a sheep's favorite game to play? Baaaa-dminton.

And finally

What do you call jokes about farming? Corny!

PHOTO FUN

This issue we have some funny farm animal pics



ORIGINAL PET and PEOPLE PORTRAITS



Colour or mono portrait of a person, pet or horse by local artist Alan Watters. Original portrait, two prints and three greetings cards included in the package. My waiting list is currently around October but a voucher can be supplied to be given as a present if required.

Call or text Alan on 07886870053 or Email watters.alan@gmail.com for more information or text/email a good photo for a quote. Website: <https://alansfineart.com/>

ALLOTMENT VACANCIES



Are you a keen gardener who needs more space? If you are interested in renting an allotment, please contact: Rebekah Jeffries rowdeparishcouncil@gmail.com
Tel: 01380 501919 Rowde Parish Council

Amanda Phillips Local Mobile Hairdresser

Cut & Blow Dry - £25
Gent's Cut - £15
Colours from £35 inc. cut
Highlights from £35
Perms - all inclusive £48



Phone for a quote 07889 744727
amandapagethairdesign@hotmail.com



Heather Smith
North Wessex Therapies

Change and Wellbeing Therapy

cognitive behavioural therapy - hypnotherapy - relaxation -
mindfulness - stress management

Face to face appointments now available at The Therapy Rooms, 32
New Rd, Chippenham and in Bromham

anxiety - stress - phobias - chronic pain - habits - poor sleep
life goals: career - personal life - sports

Call for a chat or email
t: 07702 113544

e: heather@northwessextherapies.com
w: www.northwessextherapies.com

THE BUZZ ABOUT BEES

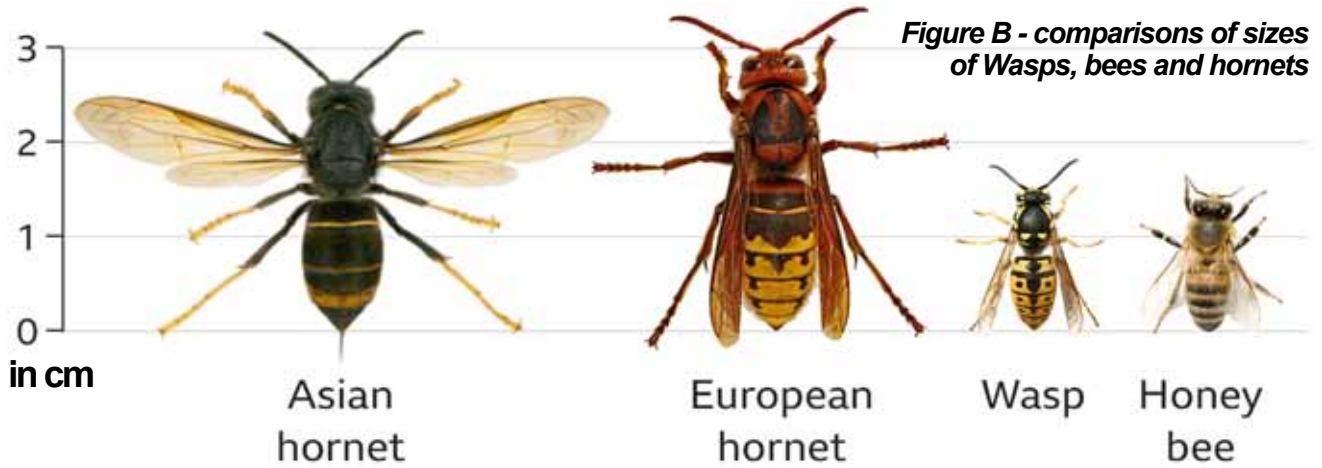


Figure B - comparisons of sizes of Wasps, bees and hornets

ASIAN HORNETS - A THREAT TO OUR BEES AND WILDLIFE

This month it may seem strange that I am not writing about bees but this is a subject that is very important to beekeepers and indeed to all of us.

The Asian hornet is a non-native invasive species on our doorstep and will be a significant new threat to insect populations. Populations that are already much smaller due to habitat loss, pesticide use and climate change.

What are they? Asian hornets are a member of the wasp family (*Vespa velutina*). They build huge nests containing thousands of individual hornets and they specialize in eating honey bees (a beehive represents a lot of food in one place to an Asian hornet) but will predate on insects of all sorts – bumblebees, butterflies, hoverflies, wasps etc.

Where do they come from? Well... Asia! The ones we are worried about are in France (and most of Western Europe) and the Channel Islands. It is believed they have all come from one pregnant female (queen) imported with some pottery into France from China in 2004. In less than twenty years they have colonized the whole of France and Belgium, most of Spain, Portugal, and Holland and are making inroads into Germany, Italy and Switzerland.



Figure A - The Asian Hornet - the villain of the piece

What do they look like? See Figures A and B. About an inch long, they have dark (almost black) bodies, yellow legs and an orange face and a single broad orange stripe (possibly a very thin second stripe) on the abdomen. Not to be confused with our native European hornet (*Vespa crabro*) which are bigger and have wasp like striped abdomen. Definitely not to be confused with the Asian giant hornet which are HUGE. When flying, Asian hornets look black, almost velvety and fast moving.

What do they do? Hornets and all wasps are predators. Asian hornets attack bee colonies, hanging around outside hives and snatching returning bees which are heavy with pollen and nectar and relatively slow moving. They rip off the legs, wings, head and abdomen, and return home with the thorax (basically a ball of muscles) to feed to their larvae. One hornet can take 50 bees a day. Not only do the bee hives lose the bees, but the other bees are afraid to go out being aware the hornets are outside waiting for them. The combined effect weakens the colony and eventually the hornets will charge in and kill everything. The hornets then move on to the next hive. No more bees? Then every other insect is at risk.



Figure C - A nest - high in a tree, becoming visible in autumn as the leaves fall - can be a metre across

More information is available on the internet in many places – in particular the Non Native Species Secretariat (NNSS – sounds grand but is two men and a dog) and Animal and Plant Health Agency. Google “NNSS Asian hornet” or “APHA Asian Hornet”

What to do if you see one.

Do not try to tackle nests alone – people die.

Make a note of the place and take a photo. A photo is vital really. There have been so many well-meaning but wrong reports (and we are talking thousands here) that APHA / NNSS cannot respond without a picture or a corpse. Report the sighting using the free Asian Hornet Watch App, The App is available at Google Play or the Apple App store. Alternatively online via NNSS Online Notification form or via Email alertnonnative@ceh.ac.uk

This is something we can all do to help our wildlife.

David Brown, Rowde Hall Cottage

01380 722406 davidb.rowde@gmail.com

Local News



HORTICULTURAL DEVELOPMENTS AT FURLONG CLOSE!



Some of the residents had already planted raised beds behind their bungalows, and there are now also a number of tomatoes everywhere almost ready for harvesting. This week's task has been to clear the undergrowth around an old bench between Alder and Hawthorn and return it to a safe and comfortable place to sit in the sunshine.

A new activity that has been getting underway at Furlong Close has been the residents' weekly gardening club.

Having acquired the essential gloves, kneelers and hand tools, a happy band varying from seven to twelve residents now meet every Monday afternoon to tend the gardens outside their bungalows. The initial task was to tidy up the flower beds under the windows and then pay a visit to Townsends Garden Centre where everyone selected a plant and returned home to place it in their preferred spot. Some wonderful vibrant colours were chosen which had an instant impact. Alan Watters very kindly organised some funding to replace the broken pump in the pond outside Marsh Hall, and he and Ann donated some beautiful plants and new gravel to enhance the edge of the restored water feature with it's now very happy fish for everyone to enjoy.





Looking ahead to the Spring we will soon be returning to the garden centre to choose some daffodils and tulip bulbs for planting in the next few weeks, and check that the bird feeders are sturdy and well supplied for the colder months ahead.

We have got off to a gentle start but hopefully next year will see Furlong Close a blaze of colour in all the borders and pots outside every front door.

Needless to say, the obligatory cuppa and biscuit or two summoned the workers at the end of each session along with the chance to sit back and admire their handiwork!

Trish Gange

FLEET OF SCHOOL BUSES LAUNCHED FOR SEND CHILDREN IN ROWDE

Children are now arriving at school in style. 57 shiny new vehicles took to the roads during September in the council's recent bid to support students with special educational needs and disabilities (SEND).

Wiltshire Council have invested £1.4 million into deploying minibuses and people carriers, which they say will provide "the right speciality support for children with SEND to access school. To help achieve that, we also need to ensure we provide them with the appropriate transport to attend," said Coun Jane Davies, Cabinet Member for SEND.

Pupils from Silverwood School in Rowde are the first to benefit from the new vehicles, as 37 minibuses were expected to transport students to the school. A further 20 people carriers are being deployed to transport SEND children to other schools in Wiltshire, with the new vehicles are expected to transport around 240 pupils in total.

Coun Davies said "I want to thank all our SEND drivers, and our Passenger Assistants who travel with pupils, for being part of this essential service and I look forward to seeing our new fleet across Wiltshire."



Councillor Jane Davies said the vehicles will ensure SEND children will arrive safely and comfortably at school

"This underlines our commitment to providing the right support so pupils can feel safe, relaxed and ready to start their day," added Coun Laura Mayes, Cabinet Member for Education and Skills.

ANGER AS CANAL AND RIVER TRUST REMOVES BINS FROM CAEN HILL CANAL PATHS



Walkers and cyclists have been left “disgusted” after dog waste bins were recently removed along the canal footpath, with people already reporting “increased mess.”

The bins along the canal towpath through Devizes to Caen Hill Locks were recently removed by the Canal and River Trust sparking angry reactions from locals.



The trust has since confirmed that the decision was made in order to cut “soaring costs” and will be enforced at many of their towpaths in the South West.

But while dog owners were warned to take waste with them, residents have reported increased mess being left along the route. Pete Giddings, who walks or cycles along the towpath daily, said: “Devizes has an issue with dog fouling in general, but I have already seen an uptick in mess. I have seen poo bags left on the side of the bank, thrown into trees, thrown into the water, or not picked up at all. People aren’t bothering as there’s no bins, it’s revolting and a public health issue because kids will step in it and cyclists have to swerve to avoid it. It’s not very pleasant by the water anymore.”

Mark Evans, the Canal and River Trust’s regional director, explained removing bins on

the Kennet & Avon Canal would save around £39,000 spent on servicing them annually.

He said: “Our priority must be maintaining the core fabric of the waterways, including the thousands of locks, bridges, aqueducts and historic structures that make up the canal network, so that we can continue to provide free access to towpaths for millions of people and maintain the integrity of the infrastructure to keep communities safe. The decision to remove bins will save much-needed money that will help pay for a long list of vital repairs. The Trust has many miles of canal where we don’t provide litter and dog waste bins, including many that have achieved Green Flag Award status.”

The decision to cut this “huge expense” comes as the trust faces rising costs and falling funding.

Walkers have been urged to follow the countryside code by disposing of their dog’s waste responsibly when using waterways.

FURLONG CLOSE UPDATE

In the past 14 months the CQC’s (Care Quality Commission’s) limited inspection has raised the ratings on the provision of care and management from “Requires Improvement” to “Good”. Two new residents have moved into the Close, bringing the number of Supported Living tenants to 30, life has settled down and those who live at FC are benefiting from the enhanced person-centered care provided by Agincare Enable, living their lives to their fullest potential, amongst their friends and neighbours amid the purpose-built surroundings of FC and the wider community of Rowde and Devizes. The Close was host to a highly successful fete on 12th August and another big event is already being planned and will be a Christmas Market on 2nd December (see poster on inside back page). And now there’s even more good news in that the areas of the site not managed by Agincare are to be developed by The Mind Tree Café. Read more about this exciting new development and about the fete in the next two articles.

EXCITING NEW PLANS AT FURLONG CLOSE!



THE MIND TREE CAFÉ CIC Promoting holistic Therapies



Coming soon. . . .currently we are working on a project at Furlong Close to breathe life back into the workshop, admin block and orchard. We are a not-for-profit community interest company set up with the purpose of promoting mental health and well-being in a variety of ways. We have looked at the Community First survey and considered what the community have requested and are working to deliver this with our own unique angle of health and wellness.



We believe mental health services should be accessible to everyone. Looking after yourself shouldn't be taken for granted, whether it's gardening with a new friend, practicing downward dog or engaging with a professional counsellor.

We will begin with a low-cost counselling service; we hope to offer this by January 2024. Particularly as the winter is a struggle for many.

We aim to offer variety and diversity – Crafts such as Willow Weaving, Candle Making, Soap Making, Print Making workshops, Yoga, Pilates, Meditation, hobbies and other activities. We will have gardening and volunteer opportunities throughout the project.

There are a couple of therapy rooms still to rent for therapists who would like to have their own space or share one.

There will be larger rooms to rent for CPD, other events or workshops - regular or occasional.

The heart and soul of our community will be a café with the purpose of bringing people together. We have plans for a small shop where basics are available and local people can also sell their creations.



We are Lisa, Lisa and Katie, between us we have experience in health, wellness, finance and

marketing, all local people, working with local people and businesses to deliver this. Once we are up and running, we will be able to access some funding and support the project with other income streams but until then we are heavily relying on the goodwill of friends, family and the community.

We have a go fund page – <https://gofund.me/bcc39437> and follow us on Instagram <https://www.instagram.com/themindtreecafe>

Email - themindtreecafe@outlook.com

SUMMER FÊTE AT FURLONG CLOSE



Who would have believed that more than 12 months have elapsed since the joyous saving of Furlong Close from threat of closure! It was a very significant date for so many, and it was decided that to mark the occasion we should celebrate with a Summer Fête for the enjoyment of the wider community and to acknowledge the huge support we received from them during the many preceding months.

The weather during the period leading up to the big day had been appalling and the forecast was not promising, but a 'phone call that morning questioning whether or not we would go ahead was met with a swift and optimistic "yes, of course we will!". The morning looked hopeful after all, but needless to say, as 2.30 approached the skies opened and as the afternoon wore on any hope of the return of sunshine had long-since gone. But in true British spirit no-one seemed deterred, and the crowds flocked in, encouraged by the uplifting strains of the Devizes Town Band who had nobly come out in force to support us.



There was much praise for Professor Colleywobbles and his friends Punch and Judy who had their audience gasping in horror and laughter in equal measure. Georgina Della-Valle, aka Balloonitude, intrigued us all with the most imaginative objects that she sculpted from balloons, and Jefferson William's merry-



Laura Mayes spots the Queen bee!

go-round and hook-a-duck provided traditional entertainment. Wandering through the crowds were Steve Upton and his gentle donkey friend, and an opportunity for visiting dogs to excel in a number of different categories was provided by Jade and her Dog Show. And a take home treat was some wonderful honey supplied by David Brown, and Emma's beautiful and varied Gonks. In addition to all this entertainment there was Alan Reed's horse race, a hand/eye coordination game, raffle, lucky dip, coconut shy, splat the rat, Tombola, treasure hunt, face painting, white elephant and book stalls, along with pin the tail on the donkey, biscuit decorating, clothes peg game and a Wellie throwing competition. We could have stepped back in time with the fun of a traditional Fête, along with "guess the name of the dog and teddy", and "guess the number of sweets in the jar". Some clever speculators went home very happy with their prizes!

After all this activity and the need to take occasional cover from increasingly lengthy

showers, where next for refreshment? This was provided by the Rowdey Cow and their delicious ice cream, a BBQ, sweet goodies from Kandy Krew Sweets, treats from The Little Bakehouse and the obligatory tea and cake stall.



Two of the winners at the popular Dog Show

The Chippenham Sea Cadets nobly turned out in the rain to perform the thankless task of directing the busy traffic in and out of the car park. A huge thank you to them and everyone who contributed so much towards a very happy day, and to those who have indicated that they would like to come again.

The intention is to make this an annual event and for it to be bigger and better next year. A dry sunny day would be a bonus, but meanwhile Furlong Close has shown that it is thriving, and the residents were delighted that they were able to share this happy event with such a generous and supportive community.

A very big thank you to you all, **Trish Gange**

THE G&D GETS A SILVER AWARD!



Dog Show chats!



I'm delighted to announce that we had our annual secret AA inspection recently and it made me so proud of The G&D when the inspector gave us a great review. We've won a Silver award for hospitality, food and service to add to our 4 star bedroom award. The restaurant remains a very solid two AA stars! I really want to personally thank the amazing G&D team, Amy, George and Syd and all the staff.. The inspector raved about the food and the service which he received! Well done everyone at The G&D.

Chippy



Devizes Town Band

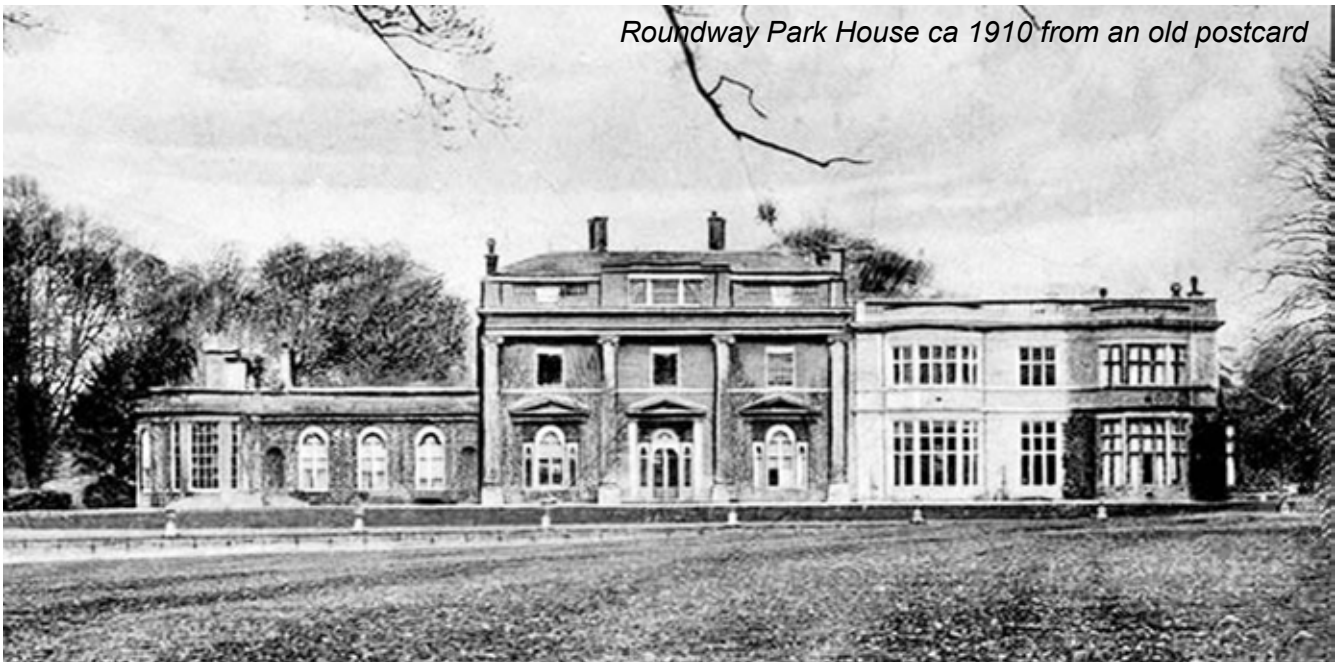
PHOTO MEMORIES OF OLD ROWDE

Di Buckland has sent us three photographs of old Rowde from the late Rowde historian Barrie Barrett's collection. Do you recognise where they have been taken? They are not dated but we guess they are from around 1900.

Thanks Di



...AND DID YOU KNOW?



Roundway Park and House

Devizes Heritage is indebted to Brian Hillier Wilkinson for the architectural information in this article. Brian now lives in London but his family lived in Devizes for over 600 years. He also alerted us to the old photos of the House in the Swindon English Heritage collection.

The New Park was Crown land until the mid 17th century when an unknown purchaser bought (alienated) an estate there. The Willy or Willey family built the first House there in the early 18th

century. It was probably George Willy the elder of Devizes or his father. This first House was a relatively modest house, orientated north-south, a rectangular block of three stories, brick built with stone dressings topped with a balustraded parapet, only slightly later being flanked by single story additions containing a drawing room and dining room. The house contained some fine panelled rooms, a good early staircase with turned balusters, marble chimney pieces and plaster ceilings which survived up until demolition in 1955.

Medals for Rowde's Children!

Rowde Parish Council have purchased Coronation medals and we still have some available.

If your child is 16 or under, lives in the parish of Rowde and hasn't already received their free medal, please message Lisa Wills on rpc.lisa.wills@gmail.com to arrange delivery.

In addition, if you are over 16 years old, you can purchase a medal for £3.50.

DOG WALKER / PET CARE SERVICES

Does your dog spend too much time home alone? Do you find it hard to fit in regular daily exercise for your dog amongst the stresses of everyday life? Let me help you! I'm a dog walker with over 10 years' experience working with dogs and other animals. I have worked for guide dogs and have been a supervisor at a busy kennels, as well as years helping at veterinary practises. My passion for animals runs very deep and their care and welfare is of up most importance to me. I am experienced, offering a professional, caring and friendly service to dogs & their owners of all Breeds I am fully insured and first aid trained.

I have a Facebook page where you can see reviews and updates of your dogs on their walks.
www.facebook.com/boopeeandfriends/

My website is www.boopee-and-friends.co.uk. Feel free to message me via website or on my Facebook page. Alternatively you can call me on 07368635866.

St Matthew's Church, Rowde Musicians wanted!

We have a lovely piano, organ and electric keyboard at St Matthew's, but nobody to play them! Could you be that person?

We are looking for people to people to act as accompanists for church services (usually on Sunday mornings) and choir practices (currently on Friday evenings) at St Matthew's Church. It doesn't have to be a weekly commitment. Could you come along and play for us perhaps once a month?

If you'd like to learn more, please contact:
Nicola Brown (choir leader) 01380 722406
or at nicola_brown@talk21.com

The Arts Society North Wiltshire

We are a friendly group who enjoy hearing about a wide range of arts based subjects. Many people from this area and beyond appreciate them – do come and join us! We meet in the Assembly Hall, Melksham from 10.30am for coffee followed by a one hour lecture at 11am.

*For more information go to
tasnorthwilts.org.uk*

October 4th:
**The Scoliotic Knights.
Reconstructing the real Richard III**
Toby Capwell

November 1st:
Isfahan & Persian Tile Making
James Allan

December 6th:
**The White Mantle of Winter:
the Impressionists & snow**
Julian Halsby



GALA CONCERT
To celebrate 30 YRS of
WHITE HORSE OPERA
*favourites by Puccini, Mozart, Verdi, Rossini
and more...*

Devizes Town Hall
Saturday 7th October
7.30pm
*Tickets £10 from Devizes Books &
www.ticketsource.co.uk/whitehorseopera*
REGISTERED CHARITY NUMBER 1194308



Remembrance Day Concert

with **The Wiltshire Police Band**
at **St Matthew's Church, Rowde**

in aid of the church and Rowde Village Hall

Saturday 11th November

7.30pm

Tickets £10

from

Nicola Brown 01380 722406

or 07999 923607



Canal Boat Rental

From the Wharf below
Caen Hill Locks

www.foxhangers.co.uk

Choose from our fleet of 14 modern narrowboats, all built new at Foxhangers

Visit our website for complete details of our

Weekend Breaks

Midweek breaks

Weekly Breaks

More to Foxhangers than boat hire!

Bespoke boat building/Re-fits/Painting

All aspects of boat engineering

Chandlery

Tel: 01380 828795

4 self-catering units and a campsite
available at Lower Foxhangers
Visit www.foxhangers.com for details

WE NEED YOU!

Do you have some news to share or just have something to say about the village?

If you can contribute to the content of your Rowde Village News in any way or would like to give us feedback (good or bad) or discuss any magazine issues then please contact:

Alan Watters on 01380 724788 or by email at watters.alan@gmail.com

or **Suzan Jackett** on 01380 729791 or by email at suzijj@rocketmail.com

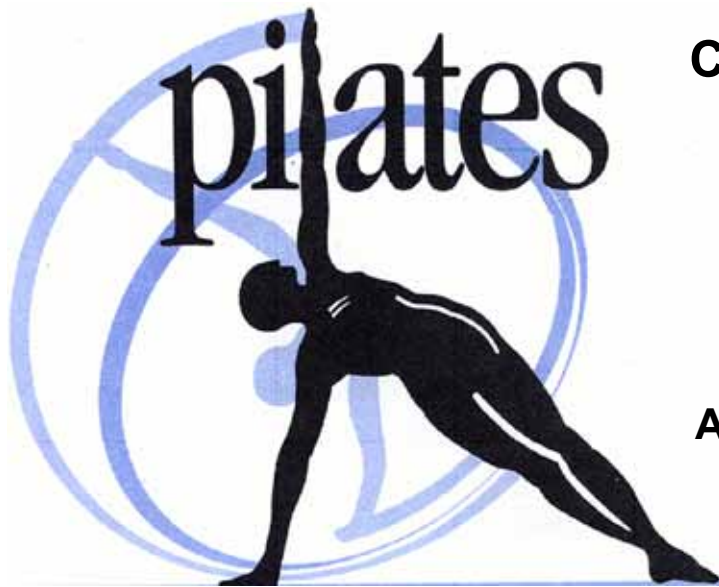
DISCLAIMER

Please note that the information given and views expressed in this magazine are generally as supplied by the contributors. Our personal comments may sometimes be expressed in the editorial on page 3 and if our views are given elsewhere, they will be credited as so. In addition, much of the local news items is sourced directly from other publications and the internet. We therefore apologise for any inaccuracies published but regrettably we have no control over this possibility happening. We will however publish corrections notified to us as soon as possible.

Alan Watters, Editor

**Magazine Submission Deadlines
for 2023/2024 (bi-monthly)
15th November, 15th January**

Move.Every.Day.



Currently running classes:

Improvers & Intermediates

Mondays @ 6.00 pm

Tuesdays @ 6.30 pm

All @ Rowdefield Farm, Rowde

(just outside Devizes)

For any enquiries, including new Beginners classes

email suzijj@rocketmail.com Tel: 01380 729791

find me on INSTAGRAM: [med.pilates](https://www.instagram.com/med.pilates) or FB: Move Every Day Pilates

YOUR PCC PHILIP WILKINSON

PCC says victims will always be believed when accessing support services

Victims who access support through commissioned services will always be listened to and taken seriously regardless of whether they've reported a crime or not, Wiltshire's Police and Crime Commissioner has said.

PCC Philip Wilkinson wants victims in the county to be confident they will always be provided with the support they need after the weekend's media revelations of historic rape and sexual assault allegations by several victims against a comedian.

Last month the Office of the Police and Crime Commissioner (OPCC) launched a new campaign focusing on signposting the broad range of commissioned support services available for victims of all types of crime, including rape and sexual assault – and the fact don't need to report to get support.

Mr Wilkinson said: "With the shocking historic allegations coming to light in the media this weekend which may have left victims feeling unheard, I want to reassure the people of Wiltshire that they can come forward in confidence that they will be listened to, and mostly importantly they will be believed."

"My office's victims' campaign is about signposting our commissioned services that are there to help people when they most need it, and rest assured victims will be treated with respect, dignity, and care by teams of highly trained support workers and medical professionals.

"I want to stress that all victims can access support via my office's commissioned services regardless of whether you've reported a crime to Wiltshire Police or not – and if you do decide you'd like to report a crime at a later stage, you'll be supported accordingly throughout the entire process.

Alongside of the funding made available to the police to enforce the law, more than £4.5M is being spent in Wiltshire this year alone to help and support victims, contribute towards community safety, aid in the reduction of serious violence and reduce reoffending.

PCC marks National Rural Crime Action Week by focusing on tackling organised crime groups

PCC Philip Wilkinson says progress has been made but more needs to be done to tackle agricultural thefts by organised crime groups (OCGs) as PCCs and their retrospective forces across the country mark National Rural Crime Action Week.

In Wiltshire, the Rural Crime Team cover all heritage and wildlife crime including theft of livestock and machinery, fly tipping, poaching and hare coursing to name a few. However, we are seeing OCGs increasingly engaged in rural acquisitive crime, including burglary and the theft of farm vehicles and equipment.



Mr Wilkinson said: "When I took over two years ago, I doubled the size of the rural crime team and gave them specialist equipment and more appropriate vehicles, including a night vision capability and drones.

"However, we need to further build our capability to tackle those organised crime groups (OCG) engaged in acquisitive rural crime, not only in Wiltshire but further afield. I want to help build the capacity of police forces across the south of England - not just in the South West - by working collaboratively with our neighbouring forces and blurring the lines between county borders.

"This will enable us to better understand the networking of these OCGs so that we can engage more proactively in enforcement, interdiction and disruption operations when the intelligence and evidence allows."

The National Rural Crime Network (NRCN) has commissioned research into this link between rural crime and organised criminal gangs, and preliminary evidence suggests that rural crime is being used by gangs to fund other criminal activities including links to the international drugs trade.

In June, PCCs across the South West came together to launch the Rural Crime Survey to explore how crime is affecting rural communities.

The survey asks rural residents if they have been the victim of any crimes in the last 12 months as well as asking what rural crimes concern them the most.

You can take the survey online at:
<https://www.surveymonkey.co.uk/r/RuralWS>

DID YOU KNOW?

If you report an incident of fly-tipping to Wiltshire Council, you could get a gift voucher of up to £200 following payment of a fixed penalty notice or successful prosecution. The council will then pay contractors to clear the area.

LAURA MAYES YOUR WILTSHIRE COUNCILLOR FOR ROWDE



Please contact me if you have any Council issues including: Planning, Housing, Education, Highways (potholes, road schemes, speeding), Fly tipping and waste, Adult Social Care.

I am here to offer advice and support so please get in touch:

Email: Laura.Mayes@wiltshire.gov.uk Tel: 07855 819343

Facebook: Laura Mayes – for Bromham, Rowde and Roundway

An extra £10m to improve our roads!

Residents and Parish Councils tell me regularly that the maintenance of our roads is one of their top priorities. I'm really pleased therefore, that prudent financial management of Wiltshire Council's budget has meant an extra £10m has been secured for preventative highways work.

This will be on top of the £14m the council will spend this financial year on highways maintenance. The additional money will be spent on preventative maintenance and a road resurfacing programme including small, local repairs to the highways; verge repairs on rural roads and materials to support volunteers working on public rights of way. Work on potholes will continue in parallel, with £2m existing funds and the government's recent £3.6m additional grant.

The preventative investment will reduce the number of potholes forming on the road network, mitigate the risk of further deterioration; improve road safety across the county for all road users; improve customer satisfaction and reduce the number of highway defect reports to the council, which will save officer time by reducing the number of ad-hoc inspections required and expensive reactive works.

The programme of additional highways work will begin with identifying the roads due to be resurfaced and give Area Boards the opportunity to comment before the work programme begins in earnest from April 2024 until the end of 2025. Meanwhile please do continue to use My Wilts to report concerns.

**Councillor Laura Mayes,
Wiltshire Councillor for Rowde**
laura.mayes@wiltshire.gov.uk

Charles S. Winchcombe & Son
INDEPENDENT FAMILY FUNERAL DIRECTORS & MEMORIAL CRAFTSMEN
Est. 1932



- Longest established
- Family owned and run
- Qualified and Licensed
- Available 24 hours a day
- Each funeral personalised
- Pre-paid funeral plans
- Craftsman made memorials



01380 722500 Winchcombe House, 37 New Park Street, Devizes, SN10 1DT www.wiltshirefunerals.co.uk



FARM FRESH LOCAL PRODUCE

We only source the best local products from our own farm and local producers, all bursting with flavour and reasonably priced

Poulshot Lodge Farm, Poulshot, Devizes, SN10 1RQ

Tel- 01380 827202

Open Tuesday – Friday 10am-5pm, Saturday 9am-4pm

For more information, to follow our blog or subscribe to our newsletter visit

www.poulshotlodgefarm.co.uk

find us on Facebook & Instagram as well



@poulshotlodgefarm

The G&D Autumn Events

G&D Garden, Terrace, Potting Shed & Pavilion

Hopefully with the promise of a late Indian summer, the garden & the outdoor spaces will be perfect place to come and enjoy with friends and when the sun goes down we'll light the fire pit and terrace burner.

Sunday is Quiz Night

Hosted by Rory

Proving to be very popular; please come and join us!
Every second Sunday the bar opens at 7.30pm and Quiz starts at 8pm Teams of 4-6 people, Prizes for the winning team

Dates: 1st 15th & 29th October
12th & 26th November

Monday is Cards Night

Hosted by Chippy

Every Monday night at 6.30pm its cards at The G&D
We alternate between Crib & CLAG, both fun games & we will teach any new beginners. Come join the fun!

Christmas is just around the corner!

Bookings for Christmas Parties are already coming in! The Bar area holds a table for 12 people and the Restaurant can hold up to 28 people for a private party. The G&D Christmas menu will be on-line by end of September or pop into pub and pick a menu up! Our Christmas Menu is £39 for 3 courses. Bookings made by the end October & receive free fizz on arrival...

Are you new to Rowde?

Come and say hello and let us welcome you to this lovely village. We are very proud of the The George & Dragon and hope you will enjoy the food, drinks and warm welcome which we provide.

Here comes Santa!!! See you here soon

Chippy & The G&D Team 01380 723 053

A Trusted, Reliable, Professional and Fully Qualified Plastering Company
Based in Devizes, Wiltshire

GET PLASTERED

Get in touch today to arrange a free no obligation Quotation



Skimming

Ceiling Repairs

Plasterboard Installation

Dot and Dab

Float and Set

Patching and Repairs

And Much More!



Marco Lowe 07436 843341

marco@getplastered.me.uk

www.getplastered.me.uk / www.facebook.com/Marcogetplastered

Modern & Traditional

Designed Memorials

M J SLY

Memorial Stonemason - New Memorials

Additional Inscriptions - Restorations

Free Home Visits & Brochure

Tel: Marlborough (01672) 516797

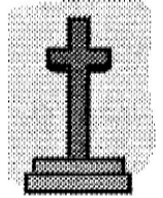
www.mjsly.co.uk

Email: info@mjsly.co.uk

Workshop & Showroom at

Pelhams Court, London Road

Marlborough



The Board Room

Renelec House

46, New Park St,

Devizes

SN10 1DS

sycamorecentre.devizes@yahoo.co.uk

www.careconfidential.com/devizes

The
SYCAMORE
Centre 

07762 382913

A Pregnancy Choices Centre



APT GROUP SERVICES

01380 711781

www.aptgroupservicesltd.co.uk

Approved Building and Electrical Contractors based in Wiltshire



Building Services
Approved CV Charger Point Installer
Electrical Services
Lighting Design
Smart Home Technology
Home Improvement
Fire Alarm and Emergency Lighting



TRUSTMARK
Government Endorsed Quality

Wiltshire Mind



Your Local Mental Health Charity

Depressed? Anxious? Stuck? Grieving?
Stressed? Not Managing?

COUNSELLING SERVICE

A safe, confidential and personal place to talk, and help you to move forward

A low cost counselling service in the community for all

Initial Assessment Free of Charge

For further information please contact:

Wiltshire Mind
24a High Street
Melksham
SN12 6LA

Email: counselling@wiltshiremind.co.uk

Phone 01225 706532

Reg Charity Number: 1113751 Reg Company Number: 5498430

Are you age 60+?

Come and join our friendly exercise class and help maintain/improve your mobility
(Exercises may be done seated or standing)

Mondays

2.30pm – 3.30pm

followed by coffee/tea and a chat at Rowde Village Hall

Cost : £3.00

For more information contact:

Yvonne 01380 723086

yve@thegablesdevizes.co.uk

ACTIVE PLUS



lendology.cic

Wiltshire Council
Where everybody matters

Lending with Heart and Mind

Wiltshire Council fund a not-for-profit loan scheme for homeowners.*

If you have lived in your home for over 5 years and:

- Are over 60; or
- Are in receipt of State Benefits; or
- Have children under 16 living with you.

You may be eligible for a home improvement loan to keep your home warm, safe, and suitable for your needs.

Lendology CIC work in partnership with Wiltshire Council to deliver the council subsidised loan scheme. Our knowledgeable team of advisers will guide you through the process of applying.

To book a no-obligation assessment, or for more information, visit www.lendology.org.uk or call 01823 461099.

Heatherton Park Studios, Bradford on Tone, Taunton, TA4 1EU

*subject to eligibility

Easterton Vehicles Ltd.

ATA Automotive
Technician Accreditation
Master Technician AT 1803087958

**Independent
BMW, Mercedes, VW, Audi
and Skoda Specialists
at less than 1/2 dealer prices.
All Makes Mot's & Servicing.**

Award Winning Knowledge Of Modern Motor Vehicles
Champion Bright Spark 2006 - 2nd
Auto Trade Technician 1999 - Winner

John Kyte, Director

Unit 1 Hillcroft Farm, 5 Easterton Sands, Devizes
Wiltshire, SN10 4PY

Call: 01380 812192 or 01380 816436

www.eastertonvehicles.com

Church Flowers

We are a friendly group of people who enjoy flower arranging. It is fun, not onerous and an opportunity to keep our Church looking as it should – in particular at the time of special festivals.

As with any village some of our members move on to live elsewhere and new families move in. There have been quite a few changes during the two years of the pandemic.

We would welcome new members and, if you might want to consider joining us, please contact: Caroline Keevil on 01380.725483 or ck@carolinekeevil.co.uk

Seasoned Logs and Kindling Available



Don't Shiver, We Deliver

Call James on
07970 781828

Beautiful Handmade Curtains, Blinds and Soft Furnishings

Free measuring and quotations
Hundreds of pattern books to browse



Caroline Flack 07982 985 925
caroline@flackformations.co.uk

JOHN STUART FUNERAL SERVICE LIMITED

18 The Britox
Devizes
Wiltshire SN10 1AJ
Tel: 01380 729459



Funerals Arranged
24 Hour Service
Private Chapel of Rest

ROWDE VILLAGE



Have you visited the village website yet? You will find it at www.rowdevillage.org
(Amongst many other things, you can see your Rowde Village News in glorious full colour!)

Please note that our Rowde Village website manager is Mandy Humphreys and she can be contacted by email at loireuncorked@me.com

Adams Renovations

Property Services



www.adamsrenovations.co.uk

For All Your Property Requirements:

Painting, Decorating (interior & exterior)

Tiling & Flooring

Paving, Decking & Patios

Guttering & Facias

Light Building Works

Repair & Renovation Work

Bathroom Specialists

Competitive prices from an honest & reliable worker.

No job too small. All areas of Wiltshire covered.

Fully insured. References available.

Email: info@adamsrenovations.co.uk

Telephone: 01380 500549

Mobile: 07725 638165

Supporting children

when a parent has had a brain injury



This booklet has been written primarily for the families and carers of a child whose parent has had a brain injury. It gives information about how children of different ages are affected by a parent having a brain injury and offers suggestions of how to talk to and support the child.

To download this **FREE BOOKLET** go to www.headway.org.uk

arts
together

...ageing creatively

Is an award-winning local charity, seeking to reduce loneliness and isolation and in doing so improve health and well being for vulnerable elderly people through participation in the arts. We run weekly sessions in Pewsey, Marlborough and Devizes and are looking for friends and supporters to join us in fundraising, raise local awareness and help at our sessions.

COULD YOU PLEDGE SOME TIME AND HELP BY?

- **Businesses:** Adopting us as your 'Charity or Choice' or supporting us in other ways?
- **Individuals:** Help spread the word in your community, join our 'friends' scheme, run a fundraiser for us, help promote our work?
- **Groups:** We have plenty of ideas and resources to support groups involvement

For more info about our activities or being involved

liz.lavender@artstogether.co.uk / 07780860922

www.artstogether.co.uk Registered Charity 1109432

Trevor Hale

NPTC Certified (arb) Fully Insured

City & Guilds
NPTC



Tree Surgery

Felling ▪ Reductions ▪ Dismantles
Chipping ▪ Stumpremoval ▪ Hedging

Very Competitive Pricing

07737 934777

www.wiltshiretreesurgery.co.uk

Seend Cleeve

WHISTLEY CANINE COUNTRY CLUB



WHISTLEY CANINE COUNTRY CLUB
AND CATTERY

**Our Modern Luxury Heated Cattery
For Tiny Tigers is Now Open**

Luxury Holiday Venue For Our
Canine Friends
Spacious Suites Under-Floor Heating
Day Care Facility Inspections Welcome
Potterne Devizes
01380 738189/726330
Please see our website for more details
www.whistleykennels.co.uk

ROWDEY GOW

Locally Sourced Food
Children's Play Area

Spectacular Views
Miniature Ponies

Delicious Home Made Ice Cream
made using our own milk fresh from the farm

**FARM CAFE &
ICE CREAM PARLOUR**

Open 7 Days a Week

Taste of the West South West England GOLD 2016

Taste of the West South West England GOLD 2015

Cooked Breakfasts
Full Lunch and Snack Menu
Children's Menu Available
Ice Cream Available All Day
Home Made Cakes and Cream Teas
all our food is freshly made from local produce

Lower Farm, Devizes Road (A342), Rowde, Nr Devizes SN10 2LX
Tel: 01380 829666 | www.rowdeycow.co.uk

The Tranquil Moment

HEALTH & BEAUTY CLINIC

Unit 2 Manor House Yard, Poulshot Road, POULSHOT,
DEVIZES, WILTSHIRE SN10 1RY

TELEPHONE: 01380 828297

www.tranquilmoment.co.uk

email: tranquilmoment@live.co.uk

**Decleor facials,
microdermabrasion, massage,
sports massage and injury clinic,
shrinking Violet fat loss body wraps,
CND shellac and Brisa Lite
sculpting gel nails, CND manicure
and pedicure, Apilus electrolysis,
CACI non surgical face lift,
Decleor and CND stockist**

*Please call Jo at The Tranquil Moment Health and
Beauty Clinic to make an appointment*

**Call us or follow us on Facebook for up
to date offers and news**

LAURENCE PLUMB

**Interior & exterior Painting/
Decorating**

Free Estimates

Tel: 01380 728174

VILLAGE DIARY

Parish Council Meetings 2023

(All Wednesdays 7.30pm - venues to be confirmed)
11th October, 8th November, 13th December.

Other Events

7th October - Souper Saturday - page 19
7th October - Gala Concert - page 30
7th to 14th October - Art Exhibition - page 2
13th October - Bag2School collection - page 15
14th October - Puzzles and Books Sale - page 43
4th November - Souper Saturday - page 19
11th November - Remembrance Day Concert - page 31
2nd December - Christmas Market - page 47
Every Tuesday - St Matthew's Cafe - page 19
Every Friday - Craft, Coffee and Chat - page 15

LETTERS

RIFLE CLUB ARE WINNERS, AGAIN!



Andy Stewart, the captain of Rowde Rifle Club, is pictured after receiving the Casuals Cup at the annual presentation held in the Conservative Club in Devizes. It is awarded to the team with the best away average throughout the season. Rowde have won the trophy for eight out of the last twenty seasons.

Regards, Bob Luke

CARERS RIGHT EXPO

21 November, 10.00am – 6.30pm, Civic Centre, Trowbridge

Unpaid carers are facing profound challenges – a struggling social care system and NHS, increasing financial pressures because of the cost-of-living crisis and an increasing number of hours caring.

For Carers Rights Day this year Carer Support Wiltshire are bringing together experts from across local government and the voluntary sector to share their expertise and guidance with carers. Through workshops and an information hub, the expo aims to empower carers with the knowledge to help them live their lives well and help them to feel supported in their caring role.

Sessions will explore what support is available to carers including:

- When you're new to caring
- How to navigate the benefits system
- How to manage their own wellbeing
- Carers legal rights
- How to prepare for an emergency
- How to build their support plan
- Preparing for the end of their caring role
- Getting back into work

This one-day event will attract unpaid carers from across Wiltshire, local government, the NHS, private and voluntary, community and social enterprise organisations.

To register your interest, email admin@carersupportwiltshire.co.uk or call 0800 181 4118.

Carer cafes

Our cafes are a great way to make new friends and enjoy a cuppa, cake and a chat with others in relaxed, friendly surroundings. Come when you can and stay for as long, or as little as you like.

Devizes – 1st Wednesday of the month

Venue: The Bear Hotel, Market Place, Devizes, SN10 1HS

Time: 10:30am – 12:00pm

Dates: 4 October, 1 November, 6 December, 3 January, 7 February, 6 March

Chippenham – 3rd Monday of the month

Venue: The Angel Hotel, 8 Market Place, Chippenham, SN15 3HD

Time: 10:30am – 12:00pm

Dates: 16 October, 20 November, 18

December, 15 January, 19 February, 18 March

**KFR** | refurbishing furniture
reviving communities
Kennet Furniture Refurbiz
The Furniture and White goods charity.
To donate items or purchase please call:
01380 720722 / 720200
Unit 6B, Hopton Industrial Estate,
Devizes, SN10 2EU.

**MTM**
MARKET TOWN MEMORIALS
21 Forty Acres Road, Devizes SN10 3DF
Call to arrange an appointment
Monday to Saturday
Evenings available
01380 829630
07951 536529
New Memorials
Renovations
Additional Inscriptions
Bespoke Designs
Pet Stones
House Signs
Ask for a free brochure
www.markettownmemorials.co.uk
Email: danbod1981@gmail.com
BRAMM

WE CARE, BECAUSE YOU DO.



Read our latest blogs

STAY UP TO DATE WITH THE LATEST NEWS RELEVANT TO UNPAID CARERS, AWARENESS DAYS AND MORE.

[@carerswiltshire](https://www.carerswiltshire.co.uk)

[carersupportwiltshire.co.uk/news/](https://www.carersupportwiltshire.co.uk/news/)

0800 181 4118

**JIGSAW PUZZLES &
SECOND HAND BOOK
SALE**

ROWDE VILLAGE HALL

**SATURDAY 14TH
OCTOBER**

2PM – 4PM

**ENTRANCE
FEE 20P**

**IN AID OF HALL
IMPROVEMENTS**

Sudoku (difficult this month)

							8	
			9				1	6
				4	1			
	2	3	5			4		
4	5			7		3		
8					3		5	
9	4				5			
	6	8		2	4			
		7	8	9				

Last Month's Solution

3	7	4	1	9	2	5	8	6
1	2	9	6	5	8	3	4	7
6	5	8	4	3	7	2	1	9
4	3	5	9	1	6	8	7	2
8	1	6	2	7	5	9	3	4
7	9	2	8	4	3	1	6	5
2	4	7	3	8	9	6	5	1
5	6	3	7	2	1	4	9	8
9	8	1	5	6	4	7	2	3

Mini Sudoku (difficult this month)

Insert the numbers 1 to 6 in the blank boxes so that each of the six separate areas of the puzzle and each line vertically and horizontally contains each number only once.

2	5				4
					2
1				5	
		6	3		
			1		
		1			

Last Month's Mini Sudoku Solution

4	1	6	5	2	3
2	3	5	4	1	6
1	6	4	3	5	2
5	2	3	6	4	1
3	4	1	2	6	5
6	5	2	1	3	4

Quick Reference List of Advertisers

Advertiser	Page
FOOD:	
Local Honey	20
Farm Fresh Local Produce	35
FUNERAL DIRECTORS ETC:	
Charles S Winchcombe & Son Ltd	34
M J Sly (Memorial Stonemasons)	37
John Stuart Funeral Services	39
D J Bewley Funeral Directors	17
MTM Memorials	42
TECHNICAL/PROFESSIONAL SERVICES:	
Dolman Audio Visual (TV & Hi Fi repairs)	6
Original Pet & People Portraits by local artist	22
Lendology.cic / Wiltshire Council	38
Mander Duffill Chartered Accountants	9
Wiltshire Buildings Record	20
Local Mobile Hairdresser	22
Agincare Careers	8
Michael Williams Financial Services Ltd	13
Arts Society of North Wiltshire	30
Headway - the brain injury charity	40
HOUSE MAINTENANCE:	
Painter & Decorator (Lawrence Plumb)	41
Plasterer (T O'Rourke)	6
Adams Renovations	40
Caroline Flack Soft Furnishings	39
Building Contractors (Gaiger Brothers)	17
KFR (used furniture and white goods)	42
Gray & Amor Ltd, Property Renovation	8
APT Building and Electrical Contractors	37
Get Plastered (Plastering Company)	37
GARDEN SERVICES:	
Tree Surgery - Trevor Hale	40
Tree Surgery - Tom Ashpole	46
JHS Garden Services	8
PUBS/RESTAURANTS/CAFES/B&Bs:	
The Rowdey Cow	41
The George and Dragon	36
HEALTH AND FITNESS:	
Active Plus for over 60s	38
The Tranquil Moment Health & Beauty	41
Wiltshire Mind	38
The Sycamore Centre	37
Pilates Classes	32
North Wessex Therapies	22
PETS & LIVESTOCK:	
Whistley Canine Country Club	41
Dog walking / Pet care services	30
Free Cat Neutering	20
MISCELLANEOUS:	
Wiltshire Bobby Van Trust	17
Nursery - Townsend Barn	46
Canal Boat Rental - Foxhangers	32
Car Sales, MOTs & Servicing	38
Arts Together - Ageing Creatively	40
Logs and Kindling	39
<i>And please remember to mention where you saw the advert when you contact any of our advertisers! Ed</i>	

Quick Reference Contacts and Village Guide

Listed below in alphabetical order are the various village organisations with contact names and telephone numbers

Allotments

Please contact Rowde Parish Council

Bell Ringing

Contact Michael Cornwell
on 07388 224129
michael.cornwell@btinternet.com

Charities

Rowdeford Charity Trust
trustees@rowdefordcharity.org.uk
www.rowdefordcharity.org.uk

Church Coordinator

Benefice Administrator:
Sarah Bowler 07876142112

Church Choir

Contact Nicola Brown:
nicola_brown@talk21.com
01380 722406

Church Wardens - vacant

Doctor

For list of doctors contact the
Health Commission, Pans Lane,
Devizes, Tel: 0300 111 5717

Football

John Dalley, Tel: 727094

Footpaths

Please contact Rowde Parish
Council

Garage

Slades of Devizes Tel: 727755

Hospitals

Devizes Community Hospital
Tel: 723511
Chippenham Community Hospital
Tel: 01249 447100
Trowbridge Community Hospital
Tel: 01225 711300

Ladies Club

Held in Village Hall and meet at
various dates in the month at 2.30pm.
Mrs Di Buckland, Tel: 723049

Local Councils

Wiltshire Council
Tel: 0300 4560100
Devizes Town Council 722160

Neighbourhood Police Team

Jo Newbury Rural Beat Manager
PCSO Georgina Dodd
Ring 101
Google devizes npt to contact the
team on
www.wiltsmessaging.co.uk>devizes

Parish Council

Acting Chair - **Lisa Wills**
Tel: **01380 730078**
Clerk - Mrs Rebekah Jeffries
Tel: 01380 501919

Playing Fields

For playing field bookings
please contact the Parish
Council Clerk on 01380 501919
rowdeparishcouncil@gmail.com

Police

Devizes Police Tel: 101

Pubs/Restaurants

Cross Keys, currently for sale
George & Dragon, Tel: 723053
Rowdey Cow Cafe, Tel: 829666

Rifle Club

Practice Wednesdays, Matches
Thursdays in Village Hall.
Laurence Plumb, Tel: 728174

Roads/Pavements

'My Wiltshire App or 03004560100

Rowde Court Studios

Ann Swan, Tel: 01380 724788
Alan Watters, Tel: 07886870053

Rowde Village News

Alan Watters, Tel: 01380 724788 or
07886870053 watters.alan@gmail.com

Rowde Village Hall

Enquiries - Tel: 07926952631
Bookings - 722497 (after 6 pm)

Rowde C of E Primary Academy

High Street, Rowde SN10 2ND
Head teacher 723991

Silverwood School

Head Teacher
Tel: 850309

Agincare at Furlong Close

Tel: 721309

Church Flowers

Caroline Keevil
ck@carolinekeevil.co.uk
Tel: 725483
Flowers for all occasions,
Weddings, Funerals & Anniversaries

TAXI

R H Reeves 01380 725072
J Dalley 07592 063789

Toddler Group

Village Hall Thursdays 9.30-11.30

Tuesday Afternoon Club (60s+)

Held in Village Hall first Tuesday in
the month at 2.30 pm.
Mrs D Ellis, Tel: 722655

Veterinary Surgeries

Estcourt - Tel: 723687
McQueens - Tel: 728505
The Paddock - Tel: 813202

Website

www.rowdevillage.org
rowdeparishcouncil@gmail.com
or contact Mandy Humphreys by
email at loireuncorked@me.com

Youth Club

Josh Wills
rpc.joshwills@gmail.com



TOWNSEND BARN NURSERY POULSHOT



For pre-school children age 0-5 years
Open all year from 8am - 6pm

The Nursery makes full use of its rural setting, and focuses on outdoor play as well as indoor activities. Home cooked food provided.

Children's gardens & greenhouse | Vegetable plot
Tennis court | Nature garden | Outdoor wood oven
Swimming with Parents | Sandpit | Outings & Trips

For further details please contact:
01380 828141 / 07976 899946
www.townsendbarnnursery.co.uk

Tom Ashpole TREE SURGERY

All Aspects of Tree
Surgery Covered



Including Hedgework And Stumpgrinding
NPTC certified, Cert.Arb (RFS) Fully Insured

Tel 01380 699473 Mob 07929 898544

Email: enquiries@wiltshiretreecare.co.uk

Web: www.wiltshiretreecare.co.uk



*Saturday
2nd December
12.00-3.00*

*Craft and Food
Christmas
Market*

*Furlong Close
Rowde S N10 2TQ
Free Entry*

