

Rowde Village News



October/November 2021



Covid-19 support in Rowde

The group has re-activated for our extremely vulnerable neighbours.

If you are unable to collect prescriptions yourself, or arrange to have them delivered, or need shopping urgently, please contact the support group on

01380 730078 or 01380 698567

or by email at

**rpc.lisa.youth@gmail.com or
patabryant@live.co.uk**

Alternatively, if you are able to help others, we would love to hear from you too.

ORIGINAL PET and PEOPLE PORTRAITS



Colour or mono portrait of a person or pet by local artist Alan Watters. Original portrait. Limited edition prints and/or personalised greetings cards packages also possible. Original supplied in a quality mount ready for framing.

Call or text Alan on 07886870053 or Email watters.alan@gmail.com for more information or text/email a good photo for a quote.

Website: <https://alansfineart.com/>

The Marie Curie Urgent Appeal

Right now, more people need us than ever before. Our nurses, hospices and Support Line have been here through it all, day and night, caring for dying people with and without coronavirus. We urgently need your donations to help continue our vital work.

To donate go to <https://mariecurie.org.uk/donate/>



If you're living with a terminal illness or caring for someone, we're here with practical and clinical information, and emotional support.

We're here for family and friends too – no one is turned away, so please don't hesitate to call if you need us.

All the support we offer is free and open 8am-6pm Monday to Friday and 11am-5pm on Saturdays. **Helpline 0800 090 2309**



MTM
MARKET TOWN MEMORIALS
21 Forty Acres Road, Devizes SN10 3DF



Call to arrange an appointment
Monday to Saturday
Evenings available

01380 829630
07951 536529

New Memorials
Renovations
Additional Inscriptions
Bespoke Designs
Pet Stones
House Signs



Ask for a free brochure
www.markettownmemorials.co.uk
Email: danbod1981@gmail.com



BRAMM



The P.C. Doctor
(Rowde/Devizes)

07833 69 6328

ian@pcdoctor-devizes.co.uk

Editorial

Welcome to this edition of the Rowde Village News.

As Covid restrictions are being further relaxed the village is gradually getting back to some sense of normality. Both pubs are open again and some of our clubs and societies have recently been meeting 'in person' rather than not meeting or just seeing each other 'online'. And all this means we are gradually getting their reports back into the magazine. This includes the Cross Keys (page 17), the Book Club (page 5) and the Ladies Club (page 4). In addition, the Monday Club (also on page 4) is now meeting 'live' in their new home at Angell House since the community centre in Bromham sadly burned down.

This is again a very full issue and there are some really interesting old and new features. This includes a couple of very interesting snippets from a new book of stories from lockdown which you will find on page 46 and the start of a new series of stories about life on the canal which you will find on page 12.

Sally Green continues her excellent new series about life on the allotments on page 8 and there's another great instalment from David Brown on page 9 all about bees. Both make interesting reading. And speaking of bees, do check out the fantastic job Judy Birch has done to help save the bees and the planet by sowing a simply beautiful flower meadow right here in Rowde. Read her letter on page 42 and see her amazing photographs on the front cover and the inside back cover.

There's good and not so good news about Furlong Close though. Read the latest update on the situation on pages 26 & 27.

What is good news is that there are Rowde artists featured in the Calne Music & Arts Festival at the beginning of October. The Art Exhibition is on all week and will be well worth a visit. Read all about it and the other events on pages 13 and 27.

Finally, thank you, all of you, who have put the new 'Save Furlong Close' stickers on your wheely bins and other imaginative places!

And for now, mind how you go, keep staying safe and we will see you next time,

Ed

This magazine is brought to you thanks to Jam Print Design & Printing and all the advertisers

Notice to contributors & advertisers

This magazine is generally printed in black and white in hard copy and delivered free to every home in the parish but additionally it is hosted on the **Village website** in full colour. If anyone does not wish any particular details (photographs, names, contact details, etc) to appear on the World Wide Web then they are advised not include them in their submissions, thank you.

Contributors please also note:

The deadline for articles and any changes to advertisements is the 15th of every second month.

Inserts: Due to the extra work created by inserting leaflets into the magazine and the fact that the team is already stretched, we very much regret we are unable to accept requests of this nature except in very special circumstances, when there will be a small charge.

Views expressed in this magazine are those of its contributors. They do not necessarily represent the views of the magazine's editorial team.

Contents

October/November 2021

Rowde all about it (page 4) *News and views from village organisations*

Rowde Book Club (page 5)

Rowdey Cow News (pages 6 & 7))

Life on the allotments (page 8)

The Buzz about Bees (page 9)

Rowde Primary Academy (page 10)

Our footpaths need your help (page 11)

Living on the Waterways (page 12)

Rowde Parish Council (pages 14 to 16)

Cross Keys News (page 17)

The St Matthew's Pages (pages 18 & 19)

inc. Church Rotas and details of Services and Events

Fun Column & Photo Fun (page 22)

Local News (pages 24 to 28)

Village Diary (page 41)

Letters (pages 42 & 43)

FREE Classified Ads (page 43)

Sudoku (page 44)

Quick Reference List of Advertisers (page 44)

Quick Reference Contacts and Village Guide (page 45)

Stories from Lockdown (page 46)

The Magazine Team

Alan Watters (Editor)

Tel: 01380 724788

Email: watters.alan@gmail.com

Suzan Jackett (Assistant Editor)

Tel: 01380 729791

Email: suzijj@rocketmail.com

Julie Baker (Advertising Manager)

Tel: 07796690413

Email: juliebaker72@yahoo.co.uk

Sue & Richard Scrusse (Distribution Managers)

Tel: 01380 729488

Email: scrusefamily@aol.com

Cover Images

The photograph on the front cover was taken recently by Judy Birch and shows the wonderful flower meadow she has created. See also the inside back cover for more of her super images.

And wheat a minute, on the back cover there's also a beautiful field photograph taken up on Roundway by Rosie Berry.

Great shot Rosie!

ROWDE LADIES CLUB

The Ladies Club restarted again on September 14th in the Village Hall after a break (due to Covid) of 18 months. We were delighted to see, as well as our usual members, a number of 'new faces' and hopefully they enjoyed the 'cuppa' and cake' and the general 'catch up' enough to come along again!

It was agreed we would meet for a trial period until Christmas and ideas were sought for a future programme. The next meetings will be held on 26th October (when we will have a Guest that Tune quiz), November 23rd (to be arranged) and 7th December (making a Christmas table decoration). All meetings now 2.30pm in the Village Hall. Any lady wishing to attend please contact either Di. Buckland 01380 723049 or Carole Morris 01380 727278 for further information.

Di. Buckland

MONDAY CLUB NEWS

Bromham and Rowde Day Centre for Older People

We are now well settled in our new home in the lounge at Angell House, in Bromham. We will be resuming our afternoon activities from the beginning of October. I am organising a range of speakers and musicians to come and entertain us.

We are now open to new members. Do come and join us on Mondays 10am - 3pm. Lifts are available for people living in Bromham and Rowde. We start with coffee and enjoy a home made two course lunch together before a few games of bingo, followed by our afternoon entertainment. The room is warm, the chairs are comfortable, there are lots of people to chat to, do come and join us.

For more information please contact :

Caroline Culley, 07557 983940 / 01380 850531
carolineculley1@outlook.com

The Monday Club is a community day centre and lunch club for older people in Bromham and Rowde. It is grant aided through Wiltshire Council.

ROWDE TUESDAY AFTERNOON CLUB

The Club will start again as soon as possible.

Daphne Ellis, Secretary/Treasurer 722655

HIWAY CLUB

(for the hearing impaired)

The Club will start again as soon as possible.

Di Buckland (Secretary) 723049

ROWDE VILLAGE HALL

It is hoped that the Village Hall will reopen again soon.

Barrie Barrett, Chairman 722186



KFR

refurbishing furniture
reviving communities

Kennet Furniture Refurbiz

The Furniture and White goods charity.

To donate items or purchase please call:

01380 720722 / 720200

Unit 6B, Hopton Industrial Estate,
Devizes, SN10 2EU.

Seasoned Logs and Kindling Available



Don't Shiver, We Deliver

**Call James on
07970 781828**



PAINTING & DECORATING SERVICES

Your friendly, female decoratress!

All decorating or painting projects considered,
including children's murals

I am tidy, reliable and competitively priced

Call Carolynn on 07881 200218

or email ceeceedecoratress@gmail.com

LAURENCE PLUMB

Interior & exterior Painting/
Decorating

Free Estimates

Tel: 01380 728174

ROWDE BOOK CLUB

The book for October is *Hotel World* by Ali Smith. The next meeting will be on 27th October. Contact Ann on 01380 724788 for further info.

BOOK REVIEWS

“The Sewing Circles of Herat” by Christina Lamb

Selected in the light of recent events in Afghanistan, *The Sewing Circles of Herat*, by prize-winning war correspondent Christina Lamb, has proven to be a powerful yet challenging read for our group. We were struck by Lamb’s bravery and her honesty in addressing her addiction to being on the frontline. Her deep affection for this complex and troubled land and its people is infectious. Chronicling her first visit in 1988 and her subsequent forays, the recurring time shifts make the text disjointed at times so it reads as a series of war reports rather than a novel. It was difficult to keep pace with the many lesser-known names and the various tribal and religious factions, yet we all agreed we had learned so much from it and gained a greater understanding of how the current situation has arisen. Though 20 years old, it is still, sadly, very pertinent today in its descriptions of the hardship suffered by the Afghani people and the tenuous struggle to hold power there.

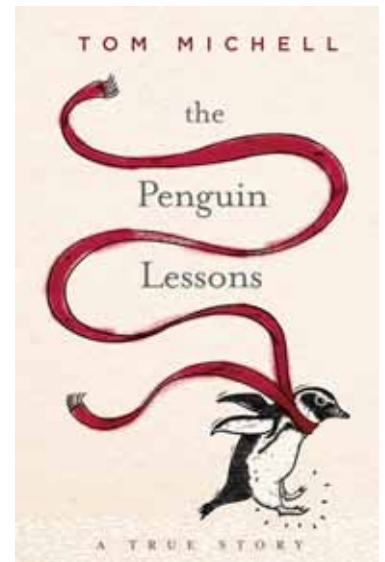
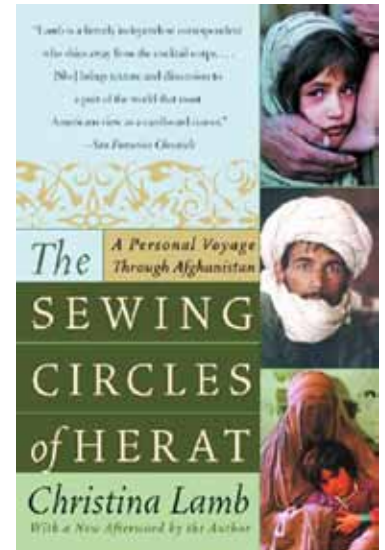
We recommend reading it with a map and notebook to hand!

Karen Bright

“Penguin Lessons” by Tom Michell

An uplifting and true story full of funny, heart-warming anecdotes of the author’s time with the penguin he rescued whilst teaching in Argentina in his youth, interspersed with interesting details of the political and economic picture of that country in the 1970’s. A joyous read with fascinating insights into the character of the Magellanic penguin. Most members thoroughly enjoyed the read.

Ann Swan



Charles S. Winchcombe & Son

INDEPENDENT FAMILY FUNERAL DIRECTORS & MEMORIAL CRAFTSMEN
Est. 1932



- Longest established
- Family owned and run
- Qualified and Licensed
- Available 24 hours a day
- Each funeral personalised
- Pre-paid funeral plans
- Craftsman made memorials



01380 722500 Winchcombe House, 37 New Park Street, Devizes, SN10 1DT www.wiltshirefunerals.co.uk

ROWDEY COW NEWS



We have had a lovely busy Summer this year despite the questionable weather throughout August! As the schools went back of course the sun came out but this at least meant we have kept busier than normal in September. We have attended the first events in nearly 2 years with our ice cream trike which was really wonderful to see with both the Fulltone Festival and the International Street Festival running over bank holiday weekend. We also have a Wedding and a garden party to attend over the next two weekends!

We have some really exciting events planned for October! On the Friday 8th October we have the Drive-in Cinema back at the Rowdey Cow and have two showings: Hocus Pocus & The Rocky Horror Picture Show! Then for half term we have 3 Halloween parties which have sold out! We will also have a little pumpkin trail around the garden to occupy our younger customers throughout half term. (see page 43) We have released our Christmas Menu and are busy planning towards Christmas which will be here before we know it! (see opposite page) Thank you everyone for your support over the last year and a half and as we move towards an uncertain Winter we just hope that everyone stays safe and we will see what the end of the year holds.

Sue x



As we are coming into October we are a little short staffed due to illnesses (not covid related fortunately) but colds, throats and flu are inevitable with all our immune systems being so low and I would like to thank the amazing team we have here for really pulling together and working extra shifts ensuring we have been able to remain open. As well as doing amazing work in the cafe the team have also become very accustomed to chasing loose peacocks and donkeys amongst other things! No two days are ever the same here!!



The Rowdey Cow Christmas Party Buffet Menu

Exclusive Private Use of Garden Sunroom
*Minimum of 20 People**

**Smaller Parties can be Accommodated with a small Hire Charge*

Choice of 2 Afternoon Time Slots Available

Christmas Buffet to Include...

-  Pigs in Blankets
-  Breaded Brie with Cranberry Sauce
-  Smoked Salmon & Cream Cheese on Wholemeal Bread Crouton
-  Turkey & Cranberry Filo Parcels
-  Selection of Quiches
-  Mince Pies & Brandy Cream
-  Christmas Cheese Tree

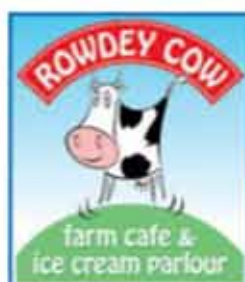
£11.95 Per Person

Festive Afternoon Tea Option Available on Request

Taking Bookings Now

~ Telephone: 01380 829666 or Email: info@rowdeycow.co.uk ~

Gluten Free & Vegan Options Available on Request - Please Phone the Café on 01380 829666 to Enquire



LIFE ON THE ALLOTMENTS

And just like that, autumn opened the allotment gate and crept up the path.... soon frosty fingers will follow!



Harvest is well upon us up at the allotments with courgettes and runner beans in abundance. Some have had success with sweetcorn but many have fallen prey to the local wildlife. There are squashes every where you turn. The beautiful rounded bluey skinned crown prince squashes being in stark contrast to the elongated pale skinned tromboncinos spreading over beds ready to be picked and used in delicious autumn dishes.

Autumn is a busy time up at the allotments with the race on to get everything harvested, tidied up and ready for the next growing season before the weather gets too wet and the ground too hard to work. This is a time for preserving gluts of produce making jams and chutneys to see us through the winter months.

I'd like to offer a warm welcome to the new families who have taken allotments in the last couple of months. I look forward to seeing you enjoying your plot over the coming months and years!

We have a record number of tenants with young children now up at the allotments so I decided it would be beneficial for the children to have their own allotment to tend. This has been a roaring success with the fully



equipped mud kitchen being a particular hit with our younger residents. Many a mud pie has been enjoyed!

We do still have allotments available. If anybody had told me two years ago that I would have an allotment and be overseeing an entire allotment site I would have told them they were mad but I absolutely love my allotment and the wonderful like-minded people I have met along the way. If you would like to find out a bit more about what is involved then don't hesitate to give me a call or drop me an email. My contact details are available on page 45 of the magazine.

Until the next time folks!



Sally Green

THE BUZZ ABOUT BEES

The sharp end of beekeeping



Bee about to sting - see the sting exposed and the bee curled up to push it home

The most common question I am asked as a beekeeper is 'Do you get stung?' and the answer is yes! Several times a year. It hurts just as much (to answer the second question) but the swelling tends to die down relatively quickly. By being calm and gentle with the bees, stinging is relatively rare and the bees barely notice you have been. But on occasion, perhaps before a storm, or maybe when wasps are around trying to steal the honey, the bees are just spiteful. I have been stung over a dozen times (you lose count after a while) in the 30 seconds it took me to open a hive, realize I had made a dreadful mistake, close it again and head for the hills.

The bees are defending their home, and rarely bother people away from the hive. In defence of the hive stinging is a last resort, for nearly always the bee dies as a result. First they will buzz around you, the tone of the hive rising from a gentle hum to a more high pitched and louder note. Then the bees will fly at you, head butting. People with a good sense of smell may detect an odour like pear drops. This is the alarm pheromone. It is the point when the wise beekeeper packs up and leaves the work for another day. Stay on and the stinging may start.

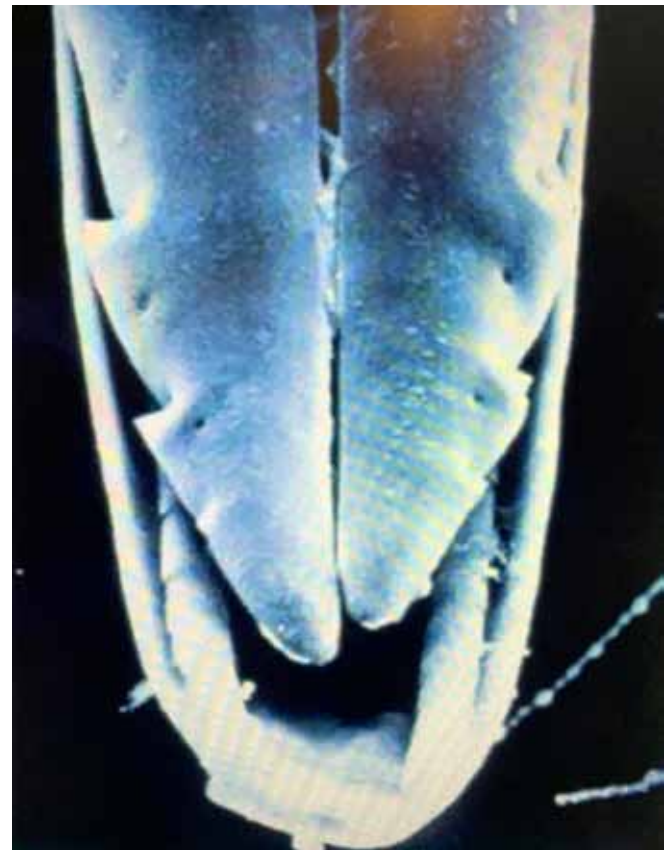


Bees busy on Ivy at this time of year - no stings in sight!

Each sting is accompanied by a dab of a different pheromone: the attack pheromone. This one smells of bananas and is bad news. It recruits more defending bees from the hive and tells them where to sting. The situation can quickly descend into a cloud of angry bees looking to get rid of you.

All this is rare and can be avoided by careful technique and listening to what the bees are telling you.

The bee's sting itself is a little miracle of engineering. It has many parts but the key structure consists of two halves, each barbed, fitting together to form a tube down which the venom is delivered. The two halves are driven by muscles and work independently, one half pushing in and out and the other out and in. With the barbs, this has the effect of drawing the sting deeper into the flesh of the victim, getting the venom where it needs to be to cause maximum discomfort! If the bee is knocked away then the whole mechanism detaches, the sting remains and carries on pumping venom. This is why bees die when they sting.



Hugely magnified - note the barbs on the sting

In the unlikely event of being stung by a bee then get the sting out as soon as possible. Scrape it off with a thumbnail rather than pinching it between finger and thumb (which will squeeze more venom in). Traditionally bicarb is used to neutralize bees stings (vinegar for wasps) but I am not convinced how effective this is as the sting leaves a very small hole. If you can, take an antihistamine to reduce swelling. An ice pack may help. As will a cup of tea and a sit down.

David Brown, Rowde Hall Cottage
01380 722406 davidb.rowde@gmail.com

NEWS FROM ROWDE PRIMARY ACADEMY

Our bright start leads to their bright future

It has been an exciting start to the term here at Rowde C of E Primary Academy – it is so wonderful to be back after a relaxing summer with things feeling a little more ‘normal’ than the challenges faced in the last 18 months.

As always, it is important for us to welcome our new Reception class, who have quickly settled into their new class and are enjoying their learning. We also have two new teachers who have started this year (Miss Adams teaching Year 3 and Miss Johns teaching Year 4) and the school has a brilliant, positive buzz of learning and excitement. Now we have been able to lift bubble restrictions, the children are able to play with their friends in all areas of the playground and they are enjoying having the space and freedom to play together.

Another very special time we can now spend together, is collective worship. Having the school together in the hall, hearing them sing and worship, feels very special. Every Tuesday, we are also thrilled to welcome Reverend Ruth once again to lead our worships. On Friday, we come together and celebrate our value winner (respect, optimism, wisdom, determination, enthusiasm, love). These are the children who have been voted

for by the class for demonstrating the value of the week. In our first week, for example, we explored respect in our worships and celebrated those children who showed respect for themselves, for others and for our school and their belongings.

One of the biggest changes, which we are most pleased about, is how we can now open our doors and welcome members of the community back into our school. On Monday 13th September, we had our first event run by our Year 6 Community Ambassadors and we welcomed a number of residents from the village to share lunch with the children. It was enjoyable for both children and adults, as they compared their experiences of school and shared amazing stories of their lives and interests.

We are planning to run more events over the year, and we look forward to welcoming more of the community when these are arranged. If you would like to visit us, please do get in touch. As you can probably tell, we are excited about the year ahead and how Rowde Academy is regaining its sparkle.

Alice Simpson

You can now follow us on twitter at Rowde C of E Primary@RowdeSchool or on Facebook



TOWNSEND BARN NURSERY POULSHOT



For pre-school children age 0-5 years
Open all year from 8am - 6pm

The Nursery makes full use of its rural setting, and focuses on outdoor play as well as indoor activities. Home cooked food provided.

Children's gardens & greenhouse | Vegetable plot
Tennis court | Nature garden | Outdoor wood oven
Swimming with Parents | Sandpit | Outings & Trips

For further details please contact:
01380 828141 / 07976 899946

www.townsendbarnnursery.co.uk

OUR FOOTPATHS Need YOUR HELP....



You may have noticed that some of our footpaths in the village need some care and attention.

They are being used more and more now since the pandemic began.

It would be great if we could make all our paths useable and safe for everyone to enjoy.

We are looking to form a group of ready volunteers who have outdoor skills and the desire to help our community in a very practical way.

We have bridges to fix, stiles to re-instate, steps to add and hedges to cut back.

If any of the above appeals to you, please contact the Parish Clerk in the first instance.

at rowdeparishcouncil@gmail.com, tel: 01380 501919

Thank you to the Wiltshire and Swindon Ramblers for the photograph and support, advice and encouragement.

GRAY & AMOR LTD.

CARPENTRY & PROPERTY RENOVATION

**Covering all aspects of property
renovation and maintenance**

**View our range of services online
or call to discuss your project**

www.grayandamor.co.uk

CALL (01380) 587006

AN UNEASY PARADISE - LIVING ON THE WATERWAYS



Peter (and his dog)

Peter

"I started going onto the canal just before my eighth birthday, there was an old corrugated boathouse just behind my parent's house and one day an old boy said, "What you staring at, you want something to do? Clean out the boats and you can have a free go of one at the end of the day." And then I was just totally hooked.

When I was 15 I joined the Royal Navy and when I left in the later part of the 70s I volunteered on a steam dredger. The best way to describe it in my view was as a 'snorting dragon', it was absolutely beautiful, the noise, the hissing, the steam, the chugging and banging. Then in '91 a job came up for a lock-keeper with a beautiful house in the middle of nowhere looking after the deep cut flight of 14 locks on the Basingstoke Canal, and I was there 21 years.

In 2012 it was decided that a lock-keeper was no longer needed so that's when I bought my boat, Grey Hare, and I've been on it ever since; and though the canal has been a part of my life most of my life, it's the first boat I've actually owned."

Ted

"Luck brought me to the canal, I always liked narrowboats but always saw it as something I couldn't afford. One night I was invited around to a friends trailer for some food and her boyfriend was there, he introduced himself by saying "do you want to buy a boat?" I'd had a really good summer working, and the girl I was with had had a good summer working, and we looked at each other and said "yea, probably, we'll go have a look at it", so we came up and

had a look at the boat which was in Trowbridge and bought it, and that was that.

I grew up in Cornwall where there's loads of industrial archaeological bridges by Brunel, old mine buildings, fantastic beam engines, steam engines, traction rallies etc. the nations industrial heritage was high on my radar.

My grandpa, during the second world war, came to Trowbridge to make Spitfire parts and assemble Spitfires, so he used to tell us stories about the canal here - part of our nations achievement whether for good or ill is its powerful industrialisation.



Ted

I grew up heavily influenced by my grandparents, because of their age I had a relatively Edwardian upbringing: oil lamps, a gramophone, polishing brass, that sort of thing. I'd always loved living in small places and an outdoor free life - even when I was a youngster I wanted to live out and about, I wanted to live in a van, I wanted to sleep in the hedge. I remember the first time I went into a boatman cabin, I thought this is exactly right, you hear people talking about those moments "I went into Alexandra the Great's palace and I felt like I was at home" well, I went into a narrowboat's back cabin and I just wanted to put my stuff in the drawers and stay in there, it was delightful, It suited me down to the ground."

From the series - An Uneasy Paradise : Living on the Waterways

Instagram @anuneasyparadise

And the softcover book of the same name is available on Amazon or from sebastienandlouise.com

At a Glance...

CALNE MUSIC & ARTS FESTIVAL

Friday 1st October	Opening & Exhibition Private View	7.30pm	By Invitation	🏠
Saturday 2nd October	Family Day	10am - 4pm	Free*	🏠
	The Shelburne Ensemble	7.30pm	£10 (Friends £7, U18s £1)	🏠
	Exhibition Open	10am - 4pm	Free*	🏠
Sunday 3rd October	'A Man with his Mind Ajar: Samuel Taylor Coleridge in Calne'	3.00pm	£5 (Friends £3, U18s £1, Students £1)	🏠
	Evensong	6pm	Free*	✝️
	Exhibition Open	10am-2pm & 4pm-5pm	Free*	🏠
Monday 4th October	Floral Art	12.15pm	Free*	🏠
	An evening with Will Blake and the PSG Choir	7.30pm	£10 (Friends £7, U18s £1)	🏠
	Free Late Night Concert: Mark Willcocks - Classical Guitar and Renaissance Lute	9.15pm	Free*	🏠
	Exhibition Open	10am-12pm & 1.15pm-5pm	Free*	🏠
Tuesday 5th October	The Bybrook Duo	12.15pm	£5 (Friends Free)	🏠
	Jazz Club: Catherine Sykes In Concert: Autumn in New York	7.30pm	£5 (Friends £8)	🏠
	Exhibition Open	10am-12pm & 1.15pm-5pm	Free*	🏠
Wednesday 6th October	Female Composers of Song' - A recital by Hannah Crocker, Soprano and Claire Haddershaw, Piano	12.15pm	£5 (Friends Free, U18s £1)	🏠
	Student Concert 'A showcase of talent': Performances by local music students	7.30pm	£5 (Friends £3, U18s £1, Students £1)	🏠
	Drink and Draw - A Free Art Event	7pm - 9pm	Free*	🍷
	Free Late Night Concert: Recital by Gabriel Longbottom, Pianist, Singer and Songwriter	9.15pm	Free*	🏠
Thursday 7th October	Exhibition Open	10am-12pm & 1.15pm-5pm	Free*	🏠
	Marlborough College Music Scholars	12.15pm	£5 (Friends Free, U18s £1)	🏠
	Jacob Byrne: Piano Recital	7.30pm	£8 (Friends £6, U18s £1)	🏠
	Free Late Night Concert: Concrete Prairie	9.15pm	Free*	🏠
Friday 8th October	Exhibition Open	10am-12pm & 1.15pm-5pm	Free*	🏠
	'Bowled Over - The life and times of William Bowles (1792-1850), poet and parson of Bremhill'	12.15pm	£5 (Friends Free, U18s £1)	🏠
	The Bonfire Radicals	7.30pm	£10 (Friends £8, U18s £1)	🏠
	Free Late Night Concert: 'From Coast to Coast' - Salli Katebe	9.15pm	Free*	🏠
Saturday 9th October	Exhibition Open	10am - 12pm	Free*	🏠
	'Meet the Artists' Amanda Duggan and Charles Rodwell with Genevieve Sloka	7.30pm	£12 (Friends £8, U18s £1)	🏠
	'THE MIKADO' - Presented by Opera Anywhere	11am - 2pm	Free*	🏠
Sunday 10th October	Lockdown Wiltshire Wildlife - Exhibition Talk by Eddy and Pam Lane	3pm	£3 (Friends £1, U18s £1)	★

🏠 Marden House ✝️ St Mary's Church 🍷 Lansdowne Strand Hotel Bar ★ Heritage Centre

www.cmaf.org

* Donations welcome

Your Parish Council

Please visit the rowdevillage.org website; the Rowde Parish Council Facebook page and the village noticeboards for confirmation of forthcoming Parish Council meetings.

A full set of minutes is available on the village website. If you would like to receive a hard copy of the minutes, please contact the Parish Clerk.

Parish Council Meetings

Since the last edition of the Rowde Village News, the Parish Council met on 8th September 2021 in person/zoom.

Rowde Parish Council would like to thank Mr. Edy-Berry, Headteacher of Rowde Primary Academy School, and the Acorn Trust, for hosting the Parish Council meetings without charge for the school hall. We thank them too for all their help in setting up the technology for the meeting. Thank you.

Our wider community – Wiltshire Council update Update on HfT – Cllr Mayes

The latest tender round has proved to be unsuccessful. HfT will continue to provide care for residents at Furlong Close.

Cllr Mayes confirmed that Wiltshire Council officers have been working with the family groups to look at alternative models for care at Furlong Close.

There was a CQC inspection in July 2021 and the report is expected imminently.

Silverwood School

The planning application for development at Silverwood School was submitted in July. The formal consultation period is now closed. The planning application is due to come to Wiltshire Council's strategic committee in October.

Representatives of the Parish Council and the village met with Anthony Dixon, Project Manager for Wiltshire Council, on 4th August, to look at Highways issues surrounding speed and construction traffic. Wiltshire Council will seek to reduce the speed limit along that section of the road after planning has been approved. The Parish Council emphasised the need for a second access. Cllr Mayes said that she would investigate this and respond to the Parish Council.

Cllr Mayes noted that there is a local petition against the ecological impact of the development. Cllr Mayes reassured the meeting that Wiltshire Council is committed to protecting the sites' features.

Consultations

There are two consultations running at Wiltshire Council currently:

Climate Strategy: Wiltshire.gov.uk/climate. The deadline for responses is 17th October 2021. The survey can be accessed online through the Wiltshire Council website or by telephoning Wiltshire Council.

Green Blue Infrastructure: a consultation on green and blue corridors and spaces to improve biodiversity and to contribute to health and wellbeing of our communities. The deadline for responses is 17th October 2021.

It is Wiltshire Council's objection for the organisation to be carbon net zero by 2030 and then for the whole county to be net zero.

Village matters

Planning

Neighbourhood planning meeting in Rowde

Rowde Parish Council is still working together with Devizes Town Council and Bishops Cannings Parish Council to produce a joint Neighbourhood Plan. A new round of consultations have been held to establish policies that are important to local people about where they live. Devizes Town Council held their meeting

in the Shambles on 28th July 2021. Rowde Parish Council held their meeting on Monday 6th September 2021. Twenty six members of the public attended.

There was some useful feedback received on potential policies for Rowde. These comments have been fed into the Planning Group now for incorporation in the plan. Thank you to P Brown who led the meeting.

There are some concerns about how landowners in Rowde can have land included in the Neighbourhood Plan.

Potential site for Development

There is a parcel of land at Tanis, owned by the Merchant Venturers, that could be used to build a community led development. Development on this site could include a walkway past the Rowdey Cow to Devizes, also a cycle route into Devizes. This proposal will be investigated.

Planning Applications

PL/2021/07576 Full planning permission. Construction of 2no. 1-bed houses, 2no. 1-bed flats, 2no. 2-bed bungalows, 3no. 2-bed houses and 1no. 3-bed house with associated car parking and landscaping, on the Empty site to the east of existing housing development on Reed Place. Consultation deadline 16/9/21

Parish Council response: This is an exception site to meet the needs of Housing Needs survey which took place in Rowde in 2019. It was noted that access to the development would mean the removal of the existing visitors parking places for Reed Place. Wiltshire Council has confirmed that this was an omission from the planning. There is existing space to replace the visitor parking spaces at the entrance to Reed Place.

The Parish Council has already expressed its favour for Wiltshire Council's prescribed method of building (pre-construction). Bat bricks will also be used.

It was recommended the Parish Council supports the application with the condition that visitors parking is replaced.

PL/2021/07860 Manor House, High Street, Rowde, Devizes SN10 2ND, Attic conversion with additional conservation roof lights and new doors on ground and first floor
Consultation deadline 17/09/2021.

PL/2021/08187 Listed building consent (Alt/Ext) Manor House, High Street, Rowde, Devizes SN10 2ND Attic conversion with additional conservation roof lights and new doors on ground and first floor

Consultation deadline 17/09/2021. The Parish Council had no objections.

PL/2021/08122 Old Durlitt, Durlitt Road: application to vary condition 2 of 20/02715/FUL. The varied conditions are to change the plan to match the windows with those in the old part of the building. They have requested that the extra garage door should match the existing garage door and they have requested the installation of an electrical charging point. There is a change of plan to not remove one of the walls inside the property. The Parish Council had no objections.

Highways

The Parish Council discussed purchasing a Speed Indicator Device (S.I.D) to be situated near Rowde Primary School, on A342. The cost to purchase the device is from £2,000. There are further costs around infrastructure, installation and ongoing maintenance.

Play areas

Playing field usage

Bishops Cannings Football Club remain committed users of the pitch. The outgoing costs are minor repairs and white lining the pitch.

It was noted that the Club need toilet provisions on site. This would have to be emptied every month. It could be a shared facility with the allotment holders.

Repairs have been carried out to the goal posts, which had been vandalized. The goal posts have been adapted so that they can be taken down and stored.

Tower View play area

- RoSPA safety surveys are due to take place in September.
- Hedgerow removal: It is proposed that the hedgerow along the Tower View border is cut back as it has grown through, and taken down, the existing chain link fence. There are Elms, a Lime tree, a damson tree which the Parish Council would like to preserve. The remainder is mostly bramble. Quotes are being sourced to cut back the hedgerow by 2ft, then replace it with an 8ft fence.
- It is proposed that the MUGA goal posts are moved. One section will be moved to the large playing field. The other section will be sited in the middle of the grassed area to avoid the boundary on all sites. A risk assessment will be carried out on the proposed re-siting.

Allotments

Update on the memorial area.

Cllr S Green and friends have created a memorial area at the allotments around Mr. Volpi's bench. Cllr Green and Co. were thanked for all their hard work. A children's plot has also been created.

Promotion of allotment vacancies

There are several vacant allotment plots. If you are interested in having a plot, please contact Cllr Green for more details (see also page 31).

Village Appearance

Grounds Maintenance

- A complaint was made about the untidiness of the grass verges around the village. The majority of grass verges are cut by Wiltshire Council and may only be cut once a year. The Parish Council agreed for a survey to be carried out of all problem, grass areas in the village and take action to improve them, either by contacting the authority responsible or by undertaking the work themselves.

Footpaths

- Problems were reported about footpaths ROWD8 (The Hangings) and also ROWD28 (Sands Lane bridleway). Both paths need serious attention. The issues have been reported to Wiltshire Council.
- Are you interested in forming a group to look at and repair some of the footpaths around the village? It has been noted that our footpaths are being used much more since the start of the pandemic and there are minor issues that need to be attended to. If you are interested and able to help, please contact the Clerk.

National Grid

The National Grid submitted a written update on their progress. Survey work was carried out between April – June 2021. National Grid are aiming to start construction in 2023, working towards a pylon free skyline on Roundway Hill from 2014.

The National Grid team will be in Devizes Market on 30th September and 7th October to answer any questions about the project. The team also plan to hold public webinars. More information can be found at: <https://northwessexdowns>.

Finance Update

Payment was approved for July invoices (total: £1,919.43)
Admin costs: £1,479.51

Ground's maintenance: £295.98

Allotment – installation trough: £143.94

Payment approved for August invoices (total: £2,687.94)

Admin costs: £1,242.44

Ground's maintenance: £1,111.78

Allotment – rates & materials: £233.25

Neighbourhood Planning meeting: £100.47

Parish Council income for July & August 2021

Parish Council income for July & August 2021

09/07/2021	Pitch hire (keep fit)	£40.00
26/07/2021	HMRC VAT return	£1,262.88
09/07/2021	Interest	£0.06
09/07/2021	Interest	£0.30
06/08/2021	Pitch hire	£36.00
04/08/2021	Allotment rent	£15.00
09/08/2021	Interest	£0.06
31/08/2021	Interest	£0.31

My Wiltshire App

- Please forward requests for highway repairs to the Clerk or report them through the 'My Wiltshire App'. The more reports that are logged through the App, the higher the priority will be given to the issue.
- It is easy to report problems like potholes, dog mess, graffiti, litter and street lighting in your area using the 'My Wiltshire' online form. Reports can be made anonymously, or you can register for free. Once you have registered, you can track the reports you have made, and receive notification once the work has been completed. The more residents report issues, the more likely we are to have them fixed.
- The 'My Wiltshire' page can be accessed through the Wiltshire Council website at: <https://www.wiltshire.gov.uk/mywilts-online-reporting>

Concerns

If you have any local concerns about footpaths, hedges, allotments, play facilities, or anything village related, we would like to hear from you. We value your input and suggestions and will try to help.

You can contact us through the Rowde Parish Council Facebook page, or by e-mail: rowdeparishcouncil@gmail.com, or by telephone: 01380 501919.

Police Matters

If you need to report a crime:

Please dial 101 to report a crime and 999 in an emergency.

It is possible to follow the Police on:

Twitter <https://twitter.com/wiltshirepolice>

Facebook <https://www.facebook.com/wiltshirepolice/>

Or sign up to Community Messaging <https://www.wiltsmessaging.co.uk/>

Dates for the diary

Parish Council meetings dates can be found in the village diary at the back of the magazine. We invite all villagers to attend, to observe and to make use of the public question time at the Parish Council meetings.

A full set of minutes is available on the Parish notice boards and on the village website.

ROWDE PARISH COUNCIL

Pat Bryant	Chair	rpcpatbryant@outlook.com	01380 698567
Lisa Wills	Vice-Chair	rpc.lisa.wills@gmail.com	01380 730078
John Dalley	Sports & Playing Fields	rpcjdalley@outlook.com	07592 063789
Debra Pullen	Footpaths, Bridleways	rpc.dpullen@gmail.com	
Philip Brown	Planning/Neighbourhood Plan	p208brown@btinternet.com	07554 311726
Chris Stevens	Play equipment safety; Grounds maintenance	rpc.cstevens010@gmail.com	
Wayne Cherry	Roads & transport, inc Silverwood Traffic Group	rpc.wcherry@gmail.com	07511 748954
Sally Green	Allotments; Rowde Primary School liaison	sallygreenrpc@yahoo.com	
Mandy Humphreys	Furlong Close liaison	loireuncorked@me.com	
Josh Wills	Playing fields; Youth Co-ordinator	rpc.joshwills@gmail.com	
Chris Greenwood	Neighbourhood Planning	cj_g@me.com	
Rebekah Jeffries	Clerk	rowdeparishcouncil@gmail.com	01380 501919

Wiltshire County Councillor for Rowde

Laura Mayes	Wiltshire Councillor	laura.mayes@wiltshire.gov.uk	
-------------	----------------------	------------------------------	--

WILTSHIRE COUNCIL - Useful phone numbers

Libraries:	01225 713000	or mobile/outside Wiltshire:	01225 777234
Parking:	01380 734812	School admissions:	01225 713010
Pest control:	01380 734721	School special educational needs:	01225 718095
Planning:	01380 734812	School transport:	01225 713004
Recycling boxes - Hills Waste:	0845 6032085	Social care – adults:	0300 456 0111
Registration - Births, Deaths & Marriages:	01225 713007	Social care – children:	01225 773500
Roads & pavements (Clarence) Freephone:	0800 232323	Street care and cleaning:	01380 734849



APT GROUP SERVICES

01380 711781

www.aptgroupservicesltd.co.uk

Approved Building and Electrical Contractors based in Wiltshire

Building Services

Approved CV Charger Point Installer

Electrical Services

Lighting Design

Smart Home Technology

Home Improvement

Fire Alarm and Emergency Lighting



TRUSTMARK
Government Endorsed Quality

CROSS KEYS NEWS

Paul and the team would like to welcome you back to the Cross Keys. We would like to start by thanking everyone who has helped to make our reopening such a success – it's lovely to see so many friendly faces, and to have received such a warm welcome to the village.

Over the past couple of months, we have been working hard to get the pub up and running, but it has been an extremely enjoyable experience, and we are pleased to say that business is steadily improving. Our famous Sunday carvery (12-3pm) continues to prove very popular, and we have already played host to a few events, including the excellent Life of Brian band, who will be returning by popular demand for a second gig on Saturday 30th October.



The skittles alley has also seen some use, with our two teams playing a pre-season friendly fuelled by plenty of 6X and sausage and chips. We have met one of our two darts teams and a few players from our pool team – if you are interested in putting your name down for a second pool team, please pop into the pub or give us a call - and we are looking forward to the seasons starting properly. It has also been great to see a good turnout for the first monthly bingo night, as well as for the fortnightly Sunday evening quiz (no more anagram rounds for a while, we promise!).



Our main announcement, and one that we have been waiting eagerly for, is that we have a new chef! Thanks to the lovely Karen, we will now be serving food every evening from Tuesday to Saturday, plus lunches on Saturday and of course, carvery on a Sunday. The feedback on her culinary creations has been very positive already, and we look forward to expanding our menu as time goes on.

As we move further into the autumn and further away from the summer (what summer?), keep your eyes on our Facebook page (The Cross Keys), website (www.crosskeysrowde.co.uk), our Instagram (@crosskeysrowde), and the signs outside the pub for details of events, particularly in the lead up to Christmas – or, even better, come in and see us for a drink and a chat! We look forward to seeing you!

Paul and the team



Oct/Nov Worship in Rowde, Bromham and Sandy Lane
Services in St Matthew's, Rowde are in bold.. *Services in Bromham and Sandy Lane are in italic.* Please visit our website, for the latest information



on our services:
Everyone is very welcome at all our services

Date/Time	Service
Oct 6 11am	Wednesday Coffee and Communion, Rowde
Oct 10 <i>8am</i> 10am	Trinity 19 <i>Holy Communion (BCP), Sandy Lane</i> Holy Communion, Rowde
Oct 17 <i>8am</i> <i>10am</i>	Trinity 20 <i>Holy Communion (BCP), Bromham</i> <i>Holy Communion, Bromham</i>
Oct 24 <i>8am</i> 10am <i>11.15am</i>	Bible Sunday <i>Holy Communion (BCP), Sandy Lane</i> Holy Communion, Rowde <i>Informal Worship, Zoom</i>
Oct 28 7.30pm	All Souls, Rowde
Oct 29 <i>7.30pm</i>	<i>All Souls, Bromham</i>
Oct 31 10am <i>11.15am</i>	All Saints Holy Communion, Rowde <i>Informal Worship, Zoom</i>
Nov 3 11am	Coffee and Communion, Rowde
Nov 7 8am <i>10am</i>	3 before Advent Holy Communion (BCP), Rowde <i>Holy Communion, Bromham</i>
Nov 14 <i>8am</i> 10am 3pm <i>3pm</i>	Remembrance Sunday <i>Holy Communion (BCP), Sandy Lane</i> Holy Communion, Rowde Remembrance Service, Rowde <i>Remembrance Service, Bromham</i>
Nov 21 <i>8am</i> <i>10am</i> <i>11.15am</i>	Christ the King <i>Holy Communion (BCP), Bromham</i> <i>Holy Communion, Bromham</i> <i>Informal Worship, Zoom</i>
Nov 28 <i>8am</i> 10am	1st Sunday Advent <i>Holy Communion (BCP), Sandy Lane</i> Holy Communion, Rowde
Dec 5 8am <i>10am</i>	2nd Sunday Advent Holy Communion (BCP), Rowde <i>Holy Communion, Bromham</i>

Please visit our website, for the latest information on our services: <https://www.achurchnearyou.com/church/9690/>

or check the Church notice board for further information

Or contact the Administrator:

Sarah Bowler

sarahbromhamandrowde@gmail.com

07876142112

Private Prayer

The churches within our Benefice are also open for private prayer on the following days:

Monday to Saturday St Matthew's Rowde 10am – 4pm

Monday to Friday St Nicholas Bromham 10am – 4pm

Saturdays St Nicholas Bromham 10am – 12noon

Every day Sandy Lane 10am – 4pm

Events

Regular Activities

Rowde Church Café on Tuesdays 10.45-12:00

Come and join us for coffee, cake and time to chat. Everyone welcome, from anywhere in the benefice!

Open the Book

For more information, contact Fran Hall: 07989758412 or Sarah Bowler: 07876142112 sarahbromhamandrowde@gmail.com

Growing in Faith - Prayer

For more information please contact Caroline Culley carolineculley1@outlook.com

Mothers' Union

Please contact Carole Myer for details: 01380 850706 or ed.myer@btinternet.com

Church Cleaning

For more information contact Jane Moss on 01380 729160 jmosscaudet@gmail.com
Maureen Hiscocks 01380 725406 for the brass cleaning rota.

Choir

Choir Leader: Vacant

Choir Practise Junior and Adults will return as soon as possible.

Bell Ringing

For further information please contact the Tower Captain: Richard Heath rich.p.heath@gmail.com or 01380 722379

Flower Arranging

Flower Guild Rota

3 & 10 October - Liz Ibbetson

17 & 24 October - Caroline Keevil

31 October & 7 November - Leah Bevan

14 & 21 November - Rosie Berry

28 November & 5 December - Jane Sartin

For further information please contact: Jane Sartin jksartin@talktalk.net or call 01380 727446

Contact Details

Rector: Revd Ruth Schofield:

07738 858909 / 01380 850191
revrschofield@gmail.com

Associate Priest: Heather Smith

07795 822515

Lay Minister: Caroline Culley

07557 983940

Church Wardens:

vacant

Benefice Administrator: Sarah Bowler

07876 142112
sarahbromhamandrowde@gmail.com

Website: A Church Near You

<https://www.achurchnearyou.com/church/9690/>

Benefice Facebook page: Churches of Rowde and Bromham

<https://www.facebook.com/groups/439328832796693/>

A Message from Revd Heather

Have you ever been on a pilgrimage? Those who have often say that the joy is in the journey, more than in arriving.

You may not think that Rowde is a place of pilgrimage, but now that it's possible to visit places of interest again, we're hoping to encourage more people to make a pilgrimage to one, or all three, of the churches in Rowde, Bromham and Sandy Lane. We've joined the Small Pilgrim Places network and you can see our entries on their website at www.smallpilgrimplaces.org. We hope people from further afield will find our churches interesting and want to come and see them for themselves.

The three churches together make up a small pilgrimage route - and it isn't just for outsiders. The walk between the churches is a great opportunity to appreciate the beauty of our villages and to think about what they and the people who live in them mean to you. If you decide to walk the route, we'd love to hear about your experience.

Perhaps some of you have already been making a short journey to St Matthews in Rowde over the past few weeks. If you need some quiet space, the church is open during the week and there are plenty of times when you will find it peaceful and quiet – a great place to reflect. Tuesday coffee mornings are back up and running at 10.45 and a great place to meet others for a chat over real coffee and delicious cake. And Sunday services are much more like the old days – with singing! See the table above for service times. We'd love to see you!

Revd Heather Smith (Associate Priest)



Canal Boat Rental

From the Wharf below
Caen Hill Locks

www.foxhangers.co.uk

Choose from our fleet of 14 modern narrowboats, all built new at Foxhangers

Visit our website for complete details of our

Weekend Breaks

Midweek breaks

Weekly Breaks

More to Foxhangers than boat hire!

Bespoke boat building/Re-fits/Painting

All aspects of boat engineering

Chandlery

Tel: 01380 828795

4 self-catering units and a campsite
available at Lower Foxhangers
Visit www.foxhangers.com for details

WE NEED YOU!

Do you have some news to share or just have something to say about the village?

If you can contribute to the content of your Rowde Village News in any way or would like to give us feedback (good or bad) or discuss any magazine issues then please contact:

Alan Watters on 01380 724788 or by email at watters.alan@gmail.com

or **Suzan Jackett** on 01380 729791 or by email at suzijj@rocketmail.com

DISCLAIMER

Please note that the information given and views expressed in this magazine are generally as supplied by the contributors. Our personal comments may sometimes be expressed in the editorial on page 3 and if our views are given elsewhere, they will be credited as so. In addition, much of the local news items is sourced directly from other publications and the internet. We therefore apologise for any inaccuracies published but regrettably we have no control over this possibility happening. We will however publish corrections notified to us as soon as possible.

Alan Watters, Editor

Magazine Submission Deadlines for 2021/2022 (bi-monthly)

15th November 2021

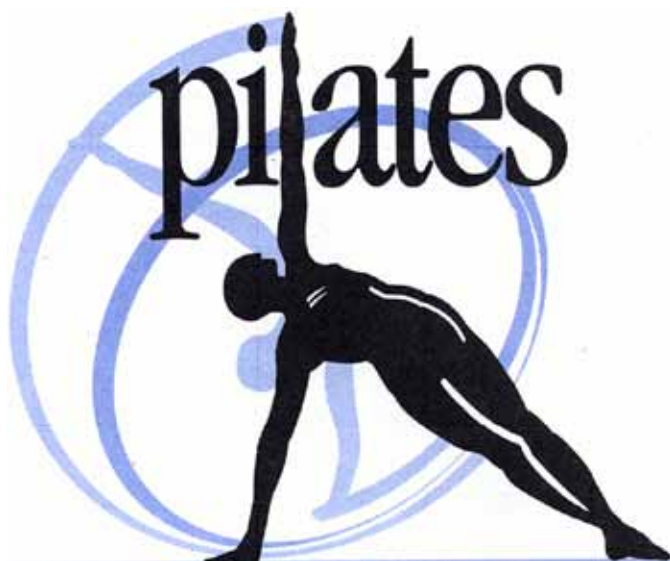
15th January 2022

15th March 2022

Move.Every.Day.

Brand New Beginners Class starting October!

Please get in touch for dates and availability!



@ Rowdefield Farm, Rowde:

Beginners:

As of Tuesday 5th October @ 7.30pm

Improvers/Intermediates

Mondays @ 6.00 pm

Tuesdays @ 6.30 pm

@ Charlotte School of Dance:

Improvers/Intermediates

Tuesdays @ 9.30 am

To book your place or for any enquiries please email suzijj@rocketmail.com or call Suzan on 01380 729791

find me on INSTAGRAM: med.pilates or FB: Move Every Day Pilates

PHILIP HALE
**Clinical Sports & Remedial
Massage Therapist**

Promoting a healthy body and mind
PRE TREATMENT POSTURAL ASSESSMENT

Soft Tissue Massage
SPORTS INJURIES

Training & Muscle Conditioning
Preparation

TREATMENT & PREVENTION OF: MUSCLE
INJURY, BACK PAIN, POOR POSTURE AND
EVERYDAY STRESSES & STRAINS

Pre, Inter & Post Event Treatment &
Recovery

WILTSHIRE BASED & MOBILE CLINIC

Please call for an appointment

TELEPHONE: 07825180179

EMAIL: reception@philiphalesportsclinic.co.uk

WEBSITE: www.philiphalesportsclinic.co.uk

INDUSTRY MEMBERSHIP AT THE
LONDON SCHOOL OF SPORTS &
REMEDIAL MASSAGE

Dolman Audio Visual

Berhills Lane Farm, Sells Green, Seend
provides

**reliable and effective repairs
& maintenance to all makes of
TV, Hi-Fi & video equipment**

by knowledgeable and friendly technical staff
at our well-equipped service department

Please contact

Maggie or Peter

Phone/Fax: 01380 828524

Email: peterdolman@btconnect.com

**DOG WALKER / PET CARE
SERVICES**

Does your dog spend too much time home alone? Do you find it hard to fit in regular daily exercise for your dog amongst the stresses of everyday life? Let me help you! I'm a dog walker with over 10 years' experience working with dogs and other animals. I have worked for guide dogs and have been a supervisor at a busy kennels, as well as years helping at veterinary practices. My passion for animals runs very deep and their care and welfare is of up most importance to me. I am experienced, offering a professional, caring and friendly service to dogs & their owners of all Breeds I am fully insured and first aid trained.

I have a Facebook page where you can see reviews and updates of your dogs on their walks.
www.facebook.com/boopeeandfriends/

My website is www.boopee-and-friends.co.uk. Feel free to message me via website or on my Facebook page. Alternatively you can call me on 07368635866.

4CHILDREN



**What your 4Children Children's
Centre offers**

Groups and services that run from your local centre are designed for families with children under five. Your centre can provide you with information or advice on all aspects of family life, so drop in to visit us or call one of our staff team.

**For further
information or to get
involved, telephone
01380 739835**



Sure Start

Wiltshire Council



T O'ROURKE

All plastering work undertaken

No job too small

FREE ESTIMATES



Contact Troy on:

01380 698993

or 07968 634689

Coronavirus (COVID-19) Travel Alert
Travel restrictions may apply and
transportation services are subject to change.
Please check online or phone 01249 444444
before you travel.

FUN COLUMN

Welcome to this month's fun column, as it's Halloween time coming up here's some ghost and vampire jokes:

Why do ghosts go on diets? So they can keep their ghoulish figures

Where does a ghost go on vacation? Mali-boo.

Why did the ghost go into the bar? For the Boos.

What is in a ghost's nose? Boo-gers.

Why did the policeman ticket the ghost on Halloween? It didn't have a haunting license.

Why do demons and ghouls hang out together? Because demons are a ghoul's best friend!

Why did the ghost starch his sheet? He wanted everyone scared stiff.

What does a panda ghost eat? Bam-BOO!

What's a ghost's favorite dessert? I-Scream!

Where do ghosts buy their food? At the ghost-ery store!

Why did the vampire read the newspaper? He heard it had great circulation.

How do vampires get around on Halloween? On blood vessels.

What's it like to be kissed by a vampire? It's a pain in the neck.

What's it called when a vampire has trouble with his house? A grave problem.

How can you tell when a vampire has been in a bakery? All the jelly has been sucked out of the jelly doughnuts.

What do you get when you cross a vampire and a snowman? Frostbite.

Do you have any jokes to tell? Send them in!

PHOTO FUN

This issue we have some fun panda photos



Do you have any interesting or amusing photos of people, pets or anything else? Send them in!

The Arts Society North Wiltshire

In spite of the pandemic our lectures have continued as planned. Members can access lectures on line via Zoom.

We have even arranged an extra lecture!

Forthcoming Lectures:

Wednesday 6th October
**Tapestry: The Ultimate Wall
Decoration**

Wednesday 3rd November
**Anatomical drawings of
Leonardo da Vinci**

Shorter art based talks are available through www.connected.theartsociety.org

Please visit our web site for more details : <http://tasnorthwilts.org.uk>

We will return to live lectures in Melksham as soon as the situation eases.

For more information go to tasnorthwilts.org.uk

And if you would like to join our society please contact

Mrs Anthea Penhallow 01225 707534 / anthea@antheapenhallow.com

Tom Ashpole **TREE**

SURGERY

All Aspects of Tree
Surgery Covered



**Including Hedgework And Stumpgrinding
NPTC certified, Cert.Arb (RFS) Fully Insured**

Tel 01380 699473 Mob 07929 898544

Email: enquiries@wiltshiretreecare.co.uk

Web: www.wiltshiretreecare.co.uk

Local News



PETITION LAUNCHED OVER ROWDE SCHOOL IMPACT ON LOCAL WILDLIFE

A petition signed by more than 300 has been launched to protect the environment as Wiltshire Council plans to build Silverwood School in an area 'rich in wildlife'.

Tessa Woodward, who started the Change.org petition, said the plans to extend the Rowde school for additional needs pupils is in the worst possible place.

She claimed that the extension is 'smack bang' in the middle of where badgers commute and will take away from where rare Bechstein's bats roost. They reckon that they have involved various wildlife charities and they are willing to go along with this.

Ms Woodward said "I believe that the new build will be a blot on the landscape but we are being told that it is what is best for special needs children and they know best despite a lot of staff and parents being against the plan."

According to Ms Woodward, the impact from traffic and congestion of the children going to the school may also have a negative effect on the area.

She added: "This is parkland rich in history, close to the site of a civil war encounter and the proposal puts this mighty structure right in the most damaging position blocking wildlife corridors."



a Bechstein's bat in flight

Cabinet member for SEND, Jane Davies said: "All the details that respond to the concerns raised in this petition are answered in the planning documents, which are available on our website.

We have also shared the plans with experts in ecology and wildlife. In addition, our commitment to protecting the site's unique features is shown in a recent request to our cabinet for additional funding to protect the biodiversity and a very rare species of bat, which has only recently been identified.

The designs for the school build have been shaped by feedback from a series of workshops with the school community, local people, families and staff, and we have also held general online meetings for people to share their thoughts on early designs.

We are fortunate to have this school in such a unique setting and the planning application details how we have carefully considered the wildlife in the area, including putting in badger gates and measures to protect the bats on site.

We need to provide more school places for SEND pupils in north Wiltshire, and the plans for Silverwood School at its Rowde campus will provide 350 spaces for pupils by September 2023."



Jane Davies



ROWDE VILLAGE REMEMBRANCE SUNDAY SERVICE



I know that in 2020 there were some members of the village who turned up to the War Memorial in St Matthews Churchyard expecting the annual Act of Remembrance to be held at 11:00.

Fortunately for those few disappointed people who did turn up Mark Baker oversaw an impromptu Act of Remembrance.

For those who wish to attend the 2021 Act of Remembrance a word of explanation as to why Rowde and Bromham hold their services at 3pm. Many of the post World War 1 and World War 2 veterans served in the Wiltshire Regiment and with Devizes being the Home Depot of the Wiltshire Regiment it was natural that those veterans wish to remember their fallen comrades as Old Comrades of their Regiment which paraded annually at the Devizes War Memorial. Whilst there are no longer any living WW1 or WW2 veterans, many former service people attend the Devizes Remembrance Parade and thus both Rowde and Bromham have kept to their historic timing of 3pm to hold their Act of Remembrance.

A secondary consideration was that by having the service later we are able to secure the services of a suitable trained musician to play the Last Post and Reveille.

I would also like to take this opportunity to let everyone know that the Royal British Legion will be restarting its door to door Poppy Collection. The National Poppy Campaign officially starts on Friday 29th of October and continues until Saturday 13th November.

We have Poppy Collector covering Tanis, Devizes Road, The High Street, The first element of Springfield Road (from the High Street to the T junction) and Marsh Lane by the Canal.

If there is anyone else who would wish to be involved in the Poppy Collection please contact me, Michael Cornwell on 07388224129 or michael.cornwell@btinternet.com

REGISTER OUR FOOTPATHS!



Did you know.... the government have set a deadline of 2026 for all footpaths to be registered? If they're not, the right of way will be lost including ancient routes of travel that have existed across this land for centuries. The right to roam will be gone. But it's not too late. Go to <https://www.ramblers.org.uk/get-involved/campaign-with-us/dont-lose-your-way-2026.aspx> to register a right of way. If you love it, save it!

NEW HOME FOR MONDAY CLUB

Our local lunch club which provides an essential meeting point for older people and those facing socially isolation has reopened its doors thanks to finding a new home.

Bromham and Rowde Monday Club will be holding regular meet ups from Angell House



Independent Living Scheme in Bromham, which is owned by housing association Aster Group, until the social club is rebuilt.

The local community group became homeless in June after the Bromham Social Centre caught fire and had been temporarily using a space in the local church to run its sessions. Aster, keen to ensure that those who rely on the club to see friendly faces regularly each month could continue to benefit from its services, offered its communal lounge in Angell House.

Caroline Culley from the Monday Club said: "We are really happy in Angell House. I can't believe how much easier it is to operate there! No moving furniture, no long distances to carry things – it is lovely.

A few of our members were a bit sceptical about us being in Angell House, but they all think it's great. It is so much easier for customers and those who live in the nearby bungalows."

The Monday Club regularly holds musical afternoons and social events for people aged 55-95+ years and has been meeting in Angell House since the start of August 2021 when Covid-19 restrictions eased. All customers living in Angell House welcomed the group during their first session where 30 people enjoyed the meeting.

Tony Helm, head of Independent Living at Aster, added: "We're pleased to be able to provide a warm welcome to the Monday Club and its members and look forward to seeing the variety of activities the club provides to the community.

We hope that our schemes are places where people are keen to spend time and enjoy seeing others after such a long period of restrictions due to COVID-19."

FURLONG CLOSE UPDATE

There have been some major developments in recent weeks regarding the future of Furlong Close, some good and some disappointing.



In the "disappointing" category, the Care Quality Commission (CQC) inspected the care services provided at Furlong Close in July. We have now received the CQC's report and it concludes that the quality of the service provided to our relatives at Furlong Close has not been up to the standard that the vulnerable residents, their families, and the CQC expect. Hft's new CEO, Kirsty Matthews, has publicly apologised for its failures in the management of the site and has committed to taking immediate action to address the CQC's concerns.

In a media release made by the families in response to the CQC's report, Antonia Field, Chair of the Families and Friends of Furlong Close said:

"It is very disappointing that Hft has been assessed as providing an inadequate standard of overall care at Furlong Close. Furlong Close itself, however, is not at fault. Furlong Close has provided excellent care to our vulnerable relatives for many, many years and is their settled and happy home. Hft must act urgently to address the deficiencies identified by the CQC and all parties need to work together to bring to fruition the progressive plan for Furlong Close that we have been working on over the Summer, which will allow Furlong Close to once again become a model of best practice in the adult social care sector."

The report has identified several key areas that Hft has not delivered on, which is completely unacceptable. At the same time, we recognise that the pandemic has created a difficult environment for everybody to work and live in, and we are incredibly grateful to the on-site carers at Furlong Close, who have continued to provide care to our loved ones through this uniquely challenging time. The "Inadequate" rating assigned by the CQC to Hft's management of Furlong Close does not reflect the kind and nurturing care provided by their carers for the people at Furlong Close. This is also evidenced by the fact that the CQC has not reviewed the previous ratings of Furlong Close for its Care (i.e. treating the residents with compassion, kindness, dignity and respect) and its Responsiveness (i.e. meeting the residents' needs), which both remain rated "Good" by the CQC. We note, for instance, that the CQC's report says:

“People and relatives spoke positively about the staff. Comments included, “The staff are wonderful, very caring, they kept them [people] happy with lockdown, it’s just one big happy family” and “If [person] is not well, they contact us straightaway, [person] has never been happier.””

On the positive side, for several months, the families of the residents have been working with advisers, care providers and financiers on a plan to acquire the site from Hft and modernise it, so that our relatives can remain in their homes, with their long-standing carers, under the management of a new care provider. Those plans are now well advanced and the families are engaged in discussions directed to putting them into effect, including positive discussions with the CQC and Hft. We are also engaging with Wiltshire Council, to ensure that our plans closely align with the Council’s needs for accommodation for adults with learning disabilities in coming years.

In addition, we will be seeking in coming weeks to engage directly with the local community in Rowde and Devizes about our plans. In the interim, we would welcome any suggestions from your readers about how we might improve Furlong Close as an asset both for the residents and the local community and ensure an even closer engagement between the residents and the community moving forward. If your readers have any thoughts about this, we would very much welcome hearing from them by email to me at mjssc@7thfloor.com.au.

The residents and their families are incredibly grateful for the support shown to them by the local community in Rowde, which has sustained them through this difficult time and speaks volumes about the compassion and strong sense of community in the village.

Mark Steele

Families and Friends of Furlong Close

INVESTIGATION LAUNCHED AFTER MAN EXPOSED HIMSELF TO FEMALE RUNNER IN ROWDE

Police are appealing for information after a female runner saw a man indecently exposing himself in his car.

At the Caen Hill Locks access road in Marsh Lane in Rowde, the runner noticed a red saloon car parked beside the road.

All of the windows in the vehicle were down and a man was in the driver’s seat indecently exposing himself. Officers attended shortly after being alerted but the vehicle had left the scene.

A police spokesman said: “We would like to hear from anyone who was in the area at the



time who may have seen the vehicle or could describe the driver or anyone who may have caught dashcam footage of the incident.”

If you can help please call 101 quoting log 54210082780.

MUSIC & ARTS FESTIVAL 1-10 OCTOBER

Calne Music and Arts Festival (CMAF) is a community celebration of music and the arts, which takes place during a ten-day period at the beginning of October each year.

The Festival aims not only to provide entertainment for the people of Calne and surrounding villages, but also to promote local musical and artistic talent. The Festival was inaugurated in 1974 and has grown substantially over the years, showcasing some exceptional talent, whilst reaching a wide cross section of the community. **See page 13 for details of this year’s events.**

Please help by becoming a Festival Friend! The Friend’s fee is a modest £15.00 per year (£10.00 for students and senior citizens). Becoming a Friend will help to ensure that the Festival is secure for future years.

For membership details and a subscription form please visit the website cmaf.org.uk.

Rowde artists are amongst many well known and highly talented local artists taking part in the art exhibition in Marden House. Nearly all works are for sale and the exhibition boasts some reputable names, making this a must for art enthusiasts and collectors alike so do go along, enjoy the visit and maybe bag a quality piece of art at a great price.

Art Exhibition Opening Times:

Saturday 2nd:

10:00am – 4pm - Please note the Family Day will be in progress

Sunday 3rd:

10:00am - 02:00pm & 04:00pm – 05:00pm

Monday 4th to Friday 8th :

10:00am – midday and 01.15pm – 05:00pm

Saturday 9th:

11:00am - 02:00pm –

Free Artists Talk 10:00am - midday

CARER CAFES BACK IN VENUES

It's been 18 months since the doors were forced to close on Carer Support Wiltshire's face-to-face carer cafes and support groups. The charity are now delighted to be able to welcome back carers for a cuppa, slice of cake and a chat at venues across Wiltshire.

Carer Support Wiltshire runs the cafes to give those people who care for someone the opportunity to meet with others who are in a similar situation to their own. Being a carer can be an isolating experience and carers may spend a lot of time at home if the person they care for has a disability or illness that makes it difficult for them to go out.

You must book your place in advance as numbers will be restricted to give everyone the space they require. Call 0800 181 4118 to book, or email admin@carersupportwiltshire.co.uk.

You can view all events taking place over the summer on the Carer Support Wiltshire website.

Online catch-ups are continuing for those who prefer to continue meeting up online and details can be found on the website. There is also a cafe especially for parent carers to meet together.

Lansdowne Strand Hotel, Calne – 2nd Tuesday of the month, 10:30am-12

Angel Hotel, Chippenham – 3rd Monday of the month, 10:30am-12

Methuen Arms, Corsham – 3rd Thursday of the month, 10:30am-12

Bear Hotel, Devizes – 1st Wednesday of the month, 10:30am-12

Palmer Gardens, Trowbridge – 3rd Wednesday of the month, 2-3:30pm

Parent carers café – 3rd Wednesday of the month, phone for venues/times

Kath Brice, PR & Communications Officer
Direct Line: 01380 819606

 Carer Support Wiltshire

A Network Partner of
CARERS TRUST

IN PERSON CARER CAFES ARE BACK!

We are reintroducing our in person Carer Cafés across Wiltshire.
Not ready for in person cafés?
We are still running virtual cafés too.

Find full listings on
www.carersupportwiltshire/whats-on

GAIGER BROTHERS LTD

Building Contractors

6 Northgate Street, Devizes, Wiltshire SN10 1JL

Tel: (01380) 722412

Fax: (01380) 727890

The Wiltshire Bobby Van Trust



Registered Charity No 1153790

The Wiltshire Bobby Van Trust provide a Courtesy Home Security Service for elderly, vulnerable and disadvantaged people living in Wiltshire, who have become, or are at risk of becoming victims of house crime or domestic abuse.

Our operators will carry out a full security and fire risk assessment before fitting the appropriate security devices. If you are over 60 or vulnerable due to a mental or physical disability and don't feel that you have adequate home security please contact us to arrange a visit.

Tel No: 01380 861155 Email: bobbyvan@wiltshire.police.uk
www.wiltshirebobbyvan.org.uk



BEWLEY

Funeral Directors Limited

Our family are here for your family

Devizes local family funeral service EST. 1970

Three generations of experience, personal values and professional service

24 Hour Service | Home Visits | Simple or Bespoke Funerals | Pre-paid funeral plans | memorials

Devizes 01380 728008

Office & Chapel: 64 New Park Street, Devizes, SN10 1DP
Over 100 reviews at www.bewleyfunerals.com



Devizes Almshouses



Devizes Almshouse Charity welcomes applications from people who would like to be considered for an Almshouse when a vacancy arises.

The Charity provides affordable accommodation for residents of Devizes and the surrounding area. Applicants should be over 60 and have lived in the area for a considerable length of time.

Applicants already registered with the Charity do not need to re-apply.

An application form can be downloaded at;

www.devizesalmshouses.org.uk

Or from; The Clerk to the Trustees
Devizes Almshouse Charity
Slade House, St James Gardens
Devizes. SN10 1EL

Telephone: 01380 736431

Devizes Almshouse Charity - Charity Registration Number 204453

Allotment Vacancies

Are you a keen
gardener who needs
more space?

If you are interested
in renting an
allotment,

please contact

Clr Sally Green,

sallygreenrpc

@yahoo.com,

Tel: 07824 832424



Rowde Parish Council



Heather Smith
North Wessex Therapies

Change and Wellbeing Therapy

**cognitive behavioural therapy - hypnotherapy - relaxation -
mindfulness - stress management**

**Face to face appointments now available at The Therapy Rooms, 32
New Rd, Chippenham and in Bromham**

**anxiety - stress - phobias - chronic pain - habits - poor sleep
life goals: career - personal life - sports**

Call for a chat or email

t: 07702 113544

e: heather@northwessextherapies.com

w: www.northwessextherapies.com



Kennet

Can you help Local Families?

Home-Start helps families with children under five who are experiencing tough times. Our fantastic team of volunteers visit families once a week to help them cope with challenges such as: isolation, loneliness, mental health issues and multiple birth. Support is as individual as the families we work with. It could be accompanying a parent to the playground or playing with a child whose parent is too ill. Often, just listening makes all the difference.

"If it hadn't been for Home-Start, we would have lost all hope. Every time I think of them, I smile." Andrea, Mum.

We're looking for volunteers who have:

- ✓ A friendly, positive nature
- ✓ Great listening skills and empathy
- ✓ Parenting skills or relevant life experience
- ✓ Time to visit families for 2 hours each week

Next Volunteer training starts: October 2021. Devises.

To find out more, T: 01672 569457; E: hskadmin@homestartkennet.co.uk
W: www.homestartkennet.co.uk

If you need support, TEXT FAMILY to 66777 for more details.



Home Start Kennet is committed to equality, diversity, and safe recruitment.
This volunteering post is subject to an enhanced DBS check.
Charity number: 1106736

LOCAL HONEY FOR SALE

Rowde Hall Cottage
High Street, Rowde SN10 2PL
(Opposite Cross Keys)
01380 722406
davidb.rowde@gmail.com
£5 for a 12oz jar (340g)



SPANISH TUITION

Native language tutor offering Spanish lessons and Translation

- * **GCSEs** and **A** levels: experience on preparing students for various exams: AQA, Edexcel, Common Entrance & International Baccalaureate.
- * **Adult tuition** to all levels: beginners, intermediate & advance.
- * **References** available if required.
- * **Contact** Patricia Córdoba on:

pcordoba@hiberniatype.com
mobile no.: 0788 496 20 79

Have an issue that you can't solve? Don't want to spend your hard-earned money and months if not years in therapy? Hypnotherapy may be the answer you're looking for!

My name is Suzie, I'm a fully licensed and accredited hypnotherapist trained by the world-renowned Marisa Peer in the established therapy RTT® (Rapid Transformational Therapy), and I'm working to complete my 450 extra hours for my clinical hypnotherapist accreditation.



I will be holding **FREE*** sessions in exchange for a testimonial at The George & Dragon Rowde, and I'd love for you to come and join me in a safe space to start this new chapter in your life. Hypnosis is a perfectly safe, deeply relaxing state to be in and you are always in control. Ever been lost in a movie? That's a form of hypnosis!

RTT® is a powerful and complete solution-based treatment that combines the most beneficial principles of Hypnotherapy, Psychotherapy, NLP, CBT, and Neuroscience, to offer unparalleled fast, effective, and long-lasting results.

Issues that can be treated:

- Weight loss/gain
- Addiction
- Anxiety & Self-Esteem
- Relationships
- Sports Performance
- Work Performance & Sales
- Money Blocks

This service includes a personalised transformation recording to be listened to for 21 days to wire in the changes after the session, as well as a 1 month catch up call to monitor your progress and provide any extra support you may need

DATES:

Saturday 6th November
Sunday 7th November

TIMES:

Slot 1: 9 am – 10:45 am
Slot 2: 11 am – 12:45 pm
Slot 3: 2pm – 3:45pm
Slot 4: 4pm – 5:45pm

Contact: suzieday20@gmail.com

Phone: 07765730765

*Free therapy in return for a testimonial to be used for marketing purposes of the service provider's choice.

Cancellation Policy: £20 refundable deposit required upon booking, complete deposit will be returned to the client in cash upon their arrival at the session. Free cancellation up to 11:59pm 4th November by which the deposit will be refunded back to the client by bank transfer. Cancellations made after this time and date will not be refunded.

Booking requires the client sign a service agreement which will be provided once the booking is made.

RTT® is endorsed by; General Hypnotherapy Register (GHR), International Association of Counsellors and Therapists (IACT), International Institute for Complementary Therapists (IICT) International Hypnosis Federation (IHF) Accredited Counsellors, Coaches, Psychotherapists and Hypnotherapists (ACCPH), Australian Society of Clinical Hypnotherapists (ASCH) and New Zealand Association of Professional Hypnotherapists (NZAPH)

LAURA MAYES

YOUR WILTSHIRE COUNCILLOR FOR ROWDE



Please contact me if you have any Council issues including:

Planning

Housing

Education

Highways – potholes, road schemes, speeding

Fly tipping and waste

Adult Social Care

I am here to offer advice and support so please get in touch:

Email: Laura.Mayes@wiltshire.gov.uk Tel: 07855 819343

Facebook: Laura Mayes – for Bromham, Rowde and Roundway

FREE CAT NEUTERING



Do you want to
neuter your
kittens
and
cats?



You know it's the right thing to do, and..
we are here to help you!

RSPCA Wiltshire Mid Branch

will pay, for a limited period, the cost of neutering and, at the same time, micro-chipping your cats and kittens if you live in **Devizes, Melksham, Westbury or Warminster** or the surrounding villages.

To apply for financial help to have your cats neutered, and, if you wish, micro-chipped at the same time, please send a blank e-mail to cnwiltson@gmail.com
We will reply with a link to the application form.
If you prefer you can telephone 07494-240622

YOU CAN APPLY FROM 25TH FEB. UNTIL 30TH APRIL 2021



Wiltshire Mid Branch
Registered charity no. 205925

Working together
to help you
and your pets



Registered charity no. 203641

CORONAVIRUS - BLOOD DONORS URGENTLY NEEDED!

And yes, you can continue to donate if you are over 70, well and have given a full donation in the last two years. There is no longer a restriction because of government guidelines.

At the moment we particularly need:

Male donors - men can donate more often than women.

Black donors - Ro blood is needed and a common type for black donors.

O negative donors - hospitals need this blood type most regularly, as it can be given to all patients.

We also urgently need people who have had coronavirus, or symptoms, to donate plasma (a special plasma appointment is required).

How to register to be a blood donor?

Check you are able to give blood. Register to be a donor online, or call 0300 123 23 23. Sign in to your online account and find an appointment – a number of appointments can be booked in advance.

You can also download the NHS Give Blood App to book or manage your appointments.



FARM FRESH LOCAL PRODUCE

We only source the best local products from our own farm and local producers, all bursting with flavour and reasonably priced

Poulshot Lodge Farm, Poulshot, Devizes, SN10 1RQ

Tel- 01380 827202

Open Tuesday – Friday 10am-5pm, Saturday 9am-4pm

For more information, to follow our blog or subscribe to our newsletter visit

www.poulshotlodgefarm.co.uk

find us on Facebook & Instagram as well



@poulshotlodgefarm

Theodora Wildcroft



ROWDE VILLAGE HALL

WEDNESDAYS 10.30 AM - 12

Full term, concession and drop-in rates available.
Beginners and experienced yogis are welcome.
Call or email for bookings and further details.



theo@wildyoga.co.uk 07818401110 www.wildyoga.co.uk
Rebalance mind, body and soul with a smile.

Martina's Professional Cleaning Services

Is cleaning and ironing taking up your valuable time?

We guarantee the best price for the perfect job

Regular Cleaning

Spring Cleaning

Office Cleaning

Oven Cleaning

Window Cleaning

Carpet Cleaning

Ironing

Fully insured and absolute privacy assured

The same regular cleaner guaranteed

Call Martina on 07859818198

JOHN STUART FUNERAL SERVICE LIMITED

18 The Britox
Devizes
Wiltshire SN10 1AJ
Tel: 01380 729459



Funerals Arranged
24 Hour Service
Private Chapel of Rest

ROWDE VILLAGE



Have you visited the village website yet? You will find it at www.rowdevillage.org
(Amongst many other things, you can see your Rowde Village News in glorious full colour!)

Please note that our Rowde Village website manager is Rebekah Jeffries and she can be contacted at rowdeparishcouncil@gmail.com or 01380 720988.

Trevor Hale

NPTC Certified (arb) Fully Insured

City &
Guilds
NPTC



Tree Surgery

Felling ▪ Reductions ▪ Dismantles
Chipping ▪ Stumpremoval ▪ Hedging

Very Competitive Pricing

07737 934777

www.wiltshiretreesurgery.co.uk

Seend Cleeve

arts
together ...ageing creatively

Is an award-winning local charity, seeking to reduce loneliness and isolation and in doing so improve health and well being for vulnerable elderly people through participation in the arts. We run weekly sessions in Pewsey, Marlborough and Devizes and are looking for friends and supporters to join us in fundraising, raise local awareness and help at our sessions.

COULD YOU PLEDGE SOME TIME AND HELP BY?

- **Businesses:** Adopting us as your 'Charity or Choice' or supporting us in other ways?
- **Individuals:** Help spread the word in your community, join our 'friends' scheme, run a fundraiser for us, help promote our work?
- **Groups:** We have plenty of ideas and resources to support groups involvement

For more info about our activities or being involved

liz.lavender@artstogether.co.uk / 07780860922

www.artstogether.co.uk Registered Charity 1109432

HAIR AT HOME ROWDE

Hairdressing salon style in
Rowde or mobile, you choose!

Contact Louise Allan on 07811 948374
or Email louiseallan_1@hotmail.co.uk

Very experienced ex salon stylist

Cutting, families, colouring, perming,
children welcome



HAIR AT HOME
experience a little hair magic

Rowde Village News Pledge

The Rowde village News is independent of political parties, private interests and government. Our policy is to provide readers with a complete, fair, accurate and balanced news and information service.

Although we are a voluntary run, nonprofit making publication we still do our best to adhere to the Press Complaints Commission's Code of Practice. While we try hard to avoid mistakes, some errors can occur during the part time and hectic process of producing one of Wiltshire's largest and most regarded village magazines (apparently, from feedback received over recent years).

Our policy is to correct errors of fact as soon as possible and, where appropriate, apologise. If you find an error of concern, please contact the editor (contact details on page 3).

Thank you for your continued support and understanding.

Alan Watters, Editor

Wiltshire Mind



Your Local Mental Health Charity

Depressed? Anxious? Stuck? Grieving?
Stressed? Not Managing?

COUNSELLING SERVICE

A safe, confidential and personal place to talk, and help you to move forward

A low cost counselling service in the community for all

Initial Assessment Free of Charge

For further information please contact:

Wiltshire Mind
24a High Street
Melksham
SN12 6LA

Email: counselling@wiltshiremind.co.uk

Phone 01225 706532

Reg Charity Number: 1113751 Reg Company Number: 5498430

Are you age 60+?

Come and join our friendly exercise class and help maintain/improve your mobility
(Exercises may be done seated or standing)

Mondays

2.30pm – 3.30pm

followed by coffee/tea and a chat at Rowde Village Hall

Cost : £3.00

For more information contact:

Yvonne 01380 723086

yve@thegablesdevizes.co.uk

ACTIVE PLUS



lendology.cic

Wiltshire Council
Where everybody matters

Lending with Heart and Mind

Wiltshire Council fund a not-for-profit loan scheme for homeowners.*

If you have lived in your home for over 5 years and:

- Are over 60; or
- Are in receipt of State Benefits; or
- Have children under 16 living with you.

You may be eligible for a home improvement loan to keep your home warm, safe, and suitable for your needs.

Lendology CIC work in partnership with Wiltshire Council to deliver the council subsidised loan scheme. Our knowledgeable team of advisers will guide you through the process of applying.

To book a no-obligation assessment, or for more information, visit www.lendology.org.uk or call 01823 461099.

Heatherton Park Studios, Bradford on Tone, Taunton, TA4 1EU

*subject to eligibility

Easterton Vehicles Ltd.

ATA Automotive
Technician Accreditation
Master Technician AT 1803087958

**Independent
BMW, Mercedes, VW, Audi
and Skoda Specialists
at less than 1/2 dealer prices.
All Makes Mot's & Servicing.**

Award Winning Knowledge Of Modern Motor Vehicles
Champion Bright Spark 2006 - 2nd
Auto Trade Technician 1999 - Winner

John Kyte, Director

Unit 1 Hillcroft Farm, 5 Easterton Sands, Devizes
Wiltshire, SN10 4PY

Call: 01380 812192 or 01380 816436

www.eastertonvehicles.com

Beautiful Handmade Curtains, Blinds and Soft Furnishings

Free measuring and quotations
Hundreds of pattern books to browse



Caroline Flack 07982 985 925
caroline@flackformations.co.uk

Adams Renovations Property Services



www.adamsrenovations.co.uk

For All Your Property Requirements:

Painting, Decorating (interior & exterior)
Tiling & Flooring
Paving, Decking & Patios
Guttering & Facias
Light Building Works
Repair & Renovation Work
Bathroom Specialists

Competitive prices from an honest & reliable worker.
No job too small. All areas of Wiltshire covered.
Fully insured. References available.

Email: info@adamsrenovations.co.uk
Telephone: 01380 500549
Mobile: 07725 638165



Butchery (Locally Reared & Free Range)
Locally Sourced Fruit & Vegetables
Fresh Fish
Dairy (we have a Fresh Milk Vending Machine)
Deli
Bakery
Cakery
Dried Goods
Handmade Chocolates
Children's Toys & Clothing
Natural Pampering
Cards & Stationery
and lots, lots more



Lower Farm is also home to the Rowdey Cow Cafe
& Ice Cream Parlour

www.spottedogfarmshop.co.uk



Use our app for
home deliveries or
click & collect



Proud of the people we work with

The George and Dragon

Tel: 01380 723 053 - Email: gm@thegeorgeanddragonrowde.co.uk

Spooky Halloween Supper

Saturday 30th October at 7.00pm

Come and join us down in the pub tunnel for a night of Halloween festive fun!

£45pp for 3 course BMF plus a half bottle of wine.

Please call to book, fancy dress optional!

Limited to 40 people so book quickly!

Christmas is coming!

We are now taking Christmas party bookings available from November 22nd right up to Christmas eve!

Delux 3 course menu is £30pp

Newly refurbished private dinning room ideal for parties up to 20 people. (Sorry closed Christmas Day)

Village special :book by end of October & receive a complimentary glass of Fizz per person

Suzie Day, RTT® Therapist and Clinical Hypnotherapist In Training here at G&D

Saturday 6th & Sunday 7th November

See page 33 for advert

The Annual village Christmas Carol supper

Sunday 19th December (tbc) at the G&D after the Church Carol service. 2 course roast turkey with all the trimmings followed by Christmas pudding £19.50pp book now.

We look forward to seeing you soon

Thank you again for all your support

Chippy & The G&D Team

WHISTLEY CANINE COUNTRY CLUB



WHISTLEY CANINE COUNTRY CLUB
AND CATTERY

**Our Modern Luxury Heated Cattery
For Tiny Tigers is Now Open**

Luxury Holiday Venue For Our
Canine Friends
Spacious Suites Under-Floor Heating
Day Care Facility Inspections Welcome
Potterne Devizes
01380 738189/726330
Please see our website for more details
www.whistleykennels.co.uk

ROWDEY GOW

Locally Sourced Food
Children's Play Area

Spectacular Views
Miniature Ponies

Delicious Home Made Ice Cream
made using our own milk fresh from the farm

**FARM CAFE &
ICE CREAM PARLOUR**

Open 7 Days a Week

Taste of the West South West England GOLD 2016

Taste of the West South West England GOLD 2015

Cooked Breakfasts
Full Lunch and Snack Menu
Children's Menu Available
Ice Cream Available All Day
Home Made Cakes and Cream Teas
all our food is freshly made from local produce

Lower Farm, Devizes Road (A342), Rowde, Nr Devizes SN10 2LX
Tel: 01380 829666 | www.rowdeycow.co.uk

The Tranquil Moment

HEALTH & BEAUTY CLINIC

Unit 2 Manor House Yard, Poulshot Road, POULSHOT,
DEVIZES, WILTSHIRE SN10 1RY

TELEPHONE: 01380 828297

www.tranquilmoment.co.uk

email: tranquilmoment@live.co.uk

**Decleor facials,
microdermabrasion, massage,
sports massage and injury clinic,
shrinking Violet fat loss body wraps,
CND shellac and Brisa Lite
sculpting gel nails, CND manicure
and pedicure, Apilus electrolysis,
CACI non surgical face lift,
Decleor and CND stockist**

*Please call Jo at The Tranquil Moment Health and
Beauty Clinic to make an appointment*

**Call us or follow us on Facebook for up
to date offers and news**

VILLAGE DIARY

Parish Council Meetings

(All Wednesdays 7.30pm - venues to be confirmed)

10th November, 8th December

Other Events

- 1-10 October - Music & Arts Festival - Page 13
- 6th October - Arts Society Lecture - Page 23
- 8th October - Rowdie Movie Night - Page 43
- 27th October - Book Club meeting - Page 5
- 30th October - Halloween Supper - Page 40
- 30th October - Life of Brian band - Page 17
- 3rd November - Arts Society Lecture - Page 23
- 6/7 November - Hypnotherapy at the G&D - page 33
- 19th December - Christmas Carol Supper - page 40
- Every Tuesday - St Matthews Cafe - page 19

The Board Room

Reneleo House

46, New Park St,

Devizes

SN10 1DS

sycamorecentre.devizes@yahoo.co.uk

www.careconfidential.com/devizes

The
SYCAMORE
Centre

07762 382913

A Pregnancy Choices Centre

LETTERS

HELP FOR LOCAL FAMILIES

Hello,

I'm from Home-Start Kennet – a charity that helps local families. We are running a volunteer training course in Devizes soon (starts 12th October 2021) and wondered whether we could share this feature in the next issue of your village news, please? Is this possible?

Many thanks

Joanne (see page 32 for more info)

ALMSHOUSE CHARITY

Dear Mr Watters

I am writing from Devizes Almshouse Charity and hope you can help.

The Devizes Almshouse Charity provides affordable accommodation for residents (over 60) of Devizes and the surrounding area who are in some form of need. The charity currently has 56 properties, which are all located in the centre of Devizes and consist of one bedroom bungalows, two bedroom bungalows and one bedroom flats.. The Charity is open to new applicants who fit this criteria.

The Charity does not operate a waiting list but all applications are considered every time there is a vacancy. Applications remain valid for the period of three years after which applicants will be requested to update their application.

We would be grateful if you could put this notice in your parish magazine. (see page 30)

Kind regards, Lois McGuffog

Assistant Clerk to the Trustees

Devizes Almshouse Charity

Telephone: 01380736431 option 5

FABULOUS FLOWER MEADOW

Hello there.

I thought I'd send some of our pictures and videos of our small meadow we started last year.

We've lived in the village for over 20 years in one of the high street cottages and due to Covid we took the chance to sow a meadow in light of the 97% shortage in this country. My husband and I wondered if Rowde magazine could start the trend off by sharing these images to save the planet and it's bees.

I realise your magazine is in black and white but online we were able to see it in full colour. I also love the idea that the bees in our meadow contribute to any local honey makers.

Hope that make sense and the pictures come out OK. Feel free to use which ever ones suit best.

Kind regards, Judy Birch

(...well we CAN and HAVE published Judy's fabulous photos in colour! See the front cover and the inside back cover! Ed)

RIGHTS OF WAY

We have until 1 January 2026 to safeguard the footpaths and bridleways we love by lodging them with our local councils on the Definitive Map of Rights of Way.

Wiltshire Ramblers are there to help:

<https://www.wiltsswindonramblers.org.uk/index.php/about/news/496-2026-don-t-lose-your-way>

You can see an up-to-date copy of Wiltshire Council's Definitive Map of Public Rights of Way on their website, in the Recreation section. There is information about how to make an application to the council to add a "lost way" to the Definitive Map, and lots more about access to the countryside.

<https://www.wiltshire.gov.uk/recreation-rights-of-way>

Sarah Lambrith

CARER CAFES BACK IN VENUES

Hi there,

I'd really appreciate if you're able to give any coverage to our carer cafes, which are back in venues after being closed for the last 15 months. They are spaces for unpaid carers to meet regularly and enjoy a hot drink and slice of cake on us.

Please let me know if you require any further information. Many thanks,

Kath Brice

(see page 28)

FAKE DOOR TO DOOR SELLERS

Devizes Community Police Team intercepted a Nottingham Knocker recently in the Potterne area, following a call from a concerned resident.

Nottingham Knockers go door to door, selling household items at a usually inflated price. They show fake ID and will tell you that they are trying to get their life back together. Whilst this may be true, the practice of selling on the doorstep is illegal (Peddling without a license).

Often, the person will make note of vulnerable addresses, such as elderly residents, and pass these addresses on to unlicensed traders, with the resident possibly becoming a target which could result in them parting with a lot of money for usually sub-standard work.

There is a good chance they will continue to be in the area this week and, if you receive a visit from them, we advise you to politely decline to buy anything from them, close the door and call us on 101, giving a brief description and direction of travel. They won't have a vehicle with them as they are dropped off and collected later by a leader.

LETTERS (cont'd)

There is more information on Nottingham Knockers on the internet.

The male intercepted recently was told to leave the area and will be reported for the above offence.

Please make any elderly or vulnerable friends, neighbours or relatives aware of this advice.

Kath Symes

Modern & Traditional
Designed Memorials

M J SLY

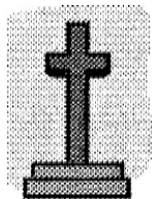
Memorial Stonemason - New Memorials
Additional Inscriptions - Restorations
Free Home Visits & Brochure

Tel: Marlborough (01672) 516797

www.mjsly.co.uk

Email: info@mjsly.co.uk

Workshop & Showroom at
Pelhams Court, London Road
Marlborough



Friday 8th October! Movie Late Night at the Rowdey
Cow!

Time for the adults to party on the Farm!

Cars arrive from 9pm

Films starts at 10pm

Optional Fancy Dress Competition

Delicious Hot food for sale prepared by our chef to include Fish & Chips, Burger & Chips & Hotdogs Also alcoholic beverages, soft and hot drinks and ice cream & popcorn

Rocky Horror Show



Tickets limited so book now!

Price £25 per car

Book now!

FREE CLASSIFIED ADS

FOR SALE

Very Large Oblong Gold Bevel Edged
Mirror (1m 32 x 1m 10) £48

Small Gold Mirror (37cm x 55cm) £10

Contact Chris Benmasaud

01380 726394 or 07776 102624

FOR SALE

8x100 gm. balls of Deramores Studio
acrylic double knit yarn, shade
Butterscotch, all the same dye lot
and in original packaging (shop price
£2.10 a ball) £10 01380 721422

Drum Kit for sale. 5-piece drum kit
drum by Gear4music, blue. Suitable for
beginners and experienced drummers.
Comes with a stool, 5B drumsticks,
drumheads, and a drum key. Cymbals
included are 14" hi-hats, one 16" crash,
and an 18" crash/ride. Excellent condition,
some minor marking on cymbals. Price
£160, offers considered. For more
information, please contact Patricia on
07884962079.

FOR SALE

Kampa Rally 200 awning brand new (cost
£240) put up once to try, comes with
additional rear poles (at a cost of £20)
£200 Bill Haley 07976879984

How to advertise here for FREE:

If you live locally and have an item to sell then just contact Julie on juliebaker72@yahoo.co.uk or telephone 07796690413, giving a brief description of the item, the amount you would like for it, and a contact telephone number (name optional). 'Wanted' ads also accepted. **Note - private advertisers only**

Please also let us know whether your item sells or not so that we can either remove it or keep it in for subsequent months

PLEASE REMEMBER
to mention where you
saw the advert when
you contact any of
our advertisers!

Sudoku (medium this month)

			6					
	6						8	
1								3
		7	2	3	6	8		
	8		7		9		6	
	9			1			3	
4	7		6		2		9	5
				5				
	1		3		4			2

Last Month's Solution

9	8	1	5	7	3	6	2	4
6	5	7	4	2	8	3	1	9
3	2	4	9	1	6	5	8	7
4	3	8	1	5	2	9	7	6
2	7	5	6	3	9	1	4	8
1	9	6	8	4	7	2	5	3
7	6	3	2	8	5	4	9	1
8	1	2	3	9	4	7	6	5
5	4	9	7	6	1	8	3	2

Mini Sudoku (difficult this month)

Insert the numbers 1 to 6 in the blank boxes so that each of the six separate areas of the puzzle and each line vertically and horizontally contains each number only once.

5					2
	3				5
		6			
			1		
	4			3	
	1			2	

Last Month's Mini Sudoku Solution

1	2	6	3	5	4
5	4	3	2	1	6
3	1	5	6	4	2
4	6	2	1	3	5
2	5	1	4	6	3
6	3	4	5	2	1

Quick Reference List of Advertisers

Advertiser	Page
FOOD:	
Local Honey	32
Spotty Dog Farm Shop	39
Farm Fresh Local Produce	35
FUNERAL DIRECTORS ETC:	
Charles S Winchcombe & Son Ltd	5
M J Sly (Memorial Stonemasons)	43
John Stuart Funeral Services	36
D J Bewley Funeral Directors	29
MTM Memorials	2
TECHNICAL/PROFESSIONAL SERVICES:	
The PC Doctor (Ian Diddams)	2
Dolman Audio Visual (TV & Hi Fi repairs)	21
Spanish Tuition	32
Original Pet & People Portraits by local artist	2
The Arts Society North Wiltshire	23
Lendology.cic / Wiltshire Council	38
HOUSE MAINTENANCE:	
House Cleaning (Martina)	36
Painter & Decorator (Lawrence Plumb)	4
Plasterer (T O'Rourke)	21
Adams Renovations	39
Caroline Flack Furnishings	39
Building Contractors (Gaiger Brothers)	29
KFR (used furniture and white goods)	4
Cee Cee Painting & Decorating	4
Gray & Amor Ltd, Property Renovation	11
APT Building and Electrical Contractors	16
Oliver's Electrical Ltd	47
GARDEN SERVICES:	
Tree Surgery - Trevor Hale	37
Tree Surgery - Tom Ashpole	23
PUBS/RESTAURANTS/CAFES/B&Bs:	
The Rowdey Cow	41
George & Dragon	40
HEALTH AND FITNESS:	
Clinical Sports & Remedial Massage	21
Active Plus for over 60s	38
The Tranquil Moment Health & Beauty	41
Wiltshire Mind	38
Theo Wildcroft Yoga Classes	36
The Sycamore Centre	41
Pilates Classes	20
North Wessex Therapies	31
Clinical Hypnotherapist	33
PETS & LIVESTOCK:	
Whistley Canine Country Club	41
Dog walking / Pet care services	21
Free Cat Neutering	34
MISCELLANEOUS:	
Wiltshire Bobby Van Trust	29
Nursery - Townsend Barn	10
Canal Boat Rental - Foxhangers	20
Rowde Village Website	36
Car Sales, MOTs & Servicing	38
4Children	21
Arts Together - Ageing Creatively	37
Hair at Home Rowde	37
Logs and Kindling	4

And please remember to mention where you saw the advert when you contact any of our advertisers! Ed

Quick Reference Contacts and Village Guide

Listed below in alphabetical order are the various village organisations with contact names and telephone numbers

Allotments

Sally Green

07824832424

or sallygreenrpc@yahoo.com.

Bell Ringing

Contact Richard Heath

on 01380722379

Bingo

Mondays 8 pm in Village Hall

Charities

Rowdeford Charity Trust

trustees@rowdefordcharity.org.uk

www.rowdefordcharity.org.uk

Church Coordinator

Benefice Administrator:

Sarah Bowler 07876142112

Church Choir

vacant

Church Wardens

vacant

Doctor

For list of doctors contact the Health Commission, Pans Lane, Devizes, Tel: 0300 111 5717

Football

John Dalley, Tel: 727094

Footpaths

Pat Bryant **01380 698567**

Garage

Slades of Devizes Tel: 727755

Hospitals

Devizes Community Hospital

Tel: 723511

Chippenham Community Hospital

Tel: 01249 447100

Trowbridge Community Hospital

Tel: 01225 711300

Hypnotherapy

Suzie Day 07765730765

suzieday20@gmail.com

Ladies Club

Held in Village Hall on last Tuesday in the month at 8 pm.

Mrs Di Buckland, Tel: 723049

Local Councils

Wiltshire Council

Tel: 0300 4560100

Devizes Town Council 722160

Neighbourhood Police Team

Jo Newbury Rural Beat Manager

PCSO Georgina Dodd

Ring 101

Google devizes npt to contact the team on

www.wiltsmessaging.co.uk>devizes

Parish Council

Chair - **Pat Bryant**

Tel: **01380 698567**

Clerk - Mrs Rebekah Jeffries

Tel: 01380 501919

PC Repairs - 07833696328

ian@pcdoctor-devizes.co.uk

Playing Fields

For playing field bookings

please contact the Parish

Council Clerk on 01380 501919

rowdeparishcouncil@gmail.com

Police

Devizes Police Tel: 101

Pubs/Restaurants

Cross Keys, Tel: 078366506000

George & Dragon, Tel: 723053

Rowdey Cow Cafe, Tel: 829666

Rifle Club

Practice Wednesdays, Matches

Thursdays in Village Hall.

Laurence Plumb, Tel: 728174

Roads/Pavements

'My Wiltshire App or 03004560100

Rowde Court Studios

Ann Swan, Tel: 01380 724788

Rowde Rainbows

Meet: Tuesdays 6.15 to 7.15pm

Contact: Emma Moffat 07780756411

Email: RowdeRainbows@gmail.com

Rowde Village News

Alan Watters, Tel: 01380 724788 or

07886870053 watters.alan@gmail.com

Rowde Village Hall

Enquiries - Tel: 07926952631

Bookings - 722497 (after 6 pm)

Rowde C of E Primary Academy

High Street, Rowde SN10 2ND

Head teacher 723991

Silverwood School

Head Teacher

Tel: 850309

Hft Furlong Close (ex Self Unlimited)

Tel: 721309

St Matthew's Flower Guild

Liz Ibbetson, Tel: 720630

Flowers for all occasions,

Weddings, Funerals &

Anniversaries

TAXI

R H Reeves 725072

J Dalley 07592 063789

Toddler Group

Village Hall Thursdays 9.30-11.30

Tuesday Afternoon Club (60s+)

Held in Village Hall first Tuesday in the month at 2.30 pm.

Mrs D Ellis, Tel: 722655

Veterinary Surgeries

Estcourt - Tel: 723687

McQueens - Tel: 728505

The Paddock - Tel: 813202

Village Fete - Lisa Wills

Enquiries - Tel: 01380 730078

Website

www.rowdevillage.org

rowdeparishcouncil@gmail.com

or contact Rebekah 01380 720988

Youth Club

Iain Marr 07540017184

STORIES FROM LOCKDOWN

Never in living memory has the world experienced a pandemic such as the catastrophic COVID-19 virus in 2020. It is with this unprecedented 'lockdown' situation in mind that UK-based publishers, AudioArcadia.com, were prompted to hold their first short story writing competition on this particular subject, in addition to a more general theme of writing.

Out of all the competition submissions received by the end of June, 20 winners, who live in various parts of the world – Australia, Malta, Spain, the UK and the US – were selected by AudioArcadia's two judges. The winning entries, together with other short stories, are now published in this new paperback which was released on September 15 and is now available on Amazon websites.

This fascinating anthology is divided into three sections: the first part contains 10 stories written under the theme of 'lockdown'; the second, another 10 stories written under the theme of 'general'; and the latter part has eight more short stories.

What makes this book so different from other short story publications is the fact that every story is prefaced with a short biography about the writer. This is extremely helpful to the reader who is immediately given an insight into where the author lives and what, in particular, he/she is dealing with during lockdown in the various countries in which they live.

It is impossible to say which of the 28 stories in this book is the most interesting for the simple reason that they are all intriguing, in one way or another.

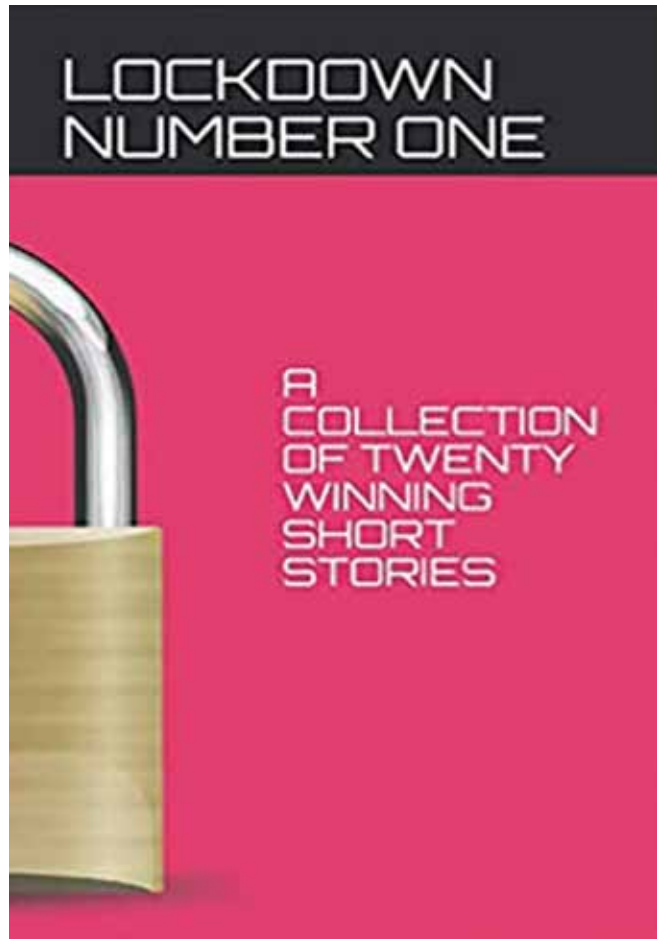
To miss out on reading this stimulating and, at times, amusing, eclectic mix of short stories would be to miss out on a vital part of life and social history

Here are some tasters to whet your appetite: Wibke Seifert's winning story, Empty Spaces, is about a woman's vacation on an island in the North Sea being interrupted by lockdown. She needs to get home urgently, to another very different island, far away in southern Europe.

Her impression of her return journey through a world that is closing down is mingled with doubts about what is expected of her when she finally gets home. The combination of both leads to her making a drastic decision

Wibke, who is of German origin, has been living in Malta since 1995, with her husband. Their family business, Seifert Systems Ltd in Hal Far, employs nearly 300 people locally. Being a lover of the outdoors, Wibke is a keen artist, as illustrated by her paintings Beach Flower, Lovebirds and Poppies.

A brief outline of some of the other winning stories in Lockdown Number One includes Protocol 17, where an elderly woman takes every precaution at the start of a deadly pandemic and locks herself in her apartment with her computerised assistant.



A Matter of Care is about a care home in the early days of lockdown where residents and their carers are isolated from the outside world.

The protagonist in 180 Degrees sacrifices safety and familiarity for the possibilities and adventure of a track with an unknown destination.

Jelly Tots illustrates the challenge to a parent of the repetitive behaviours of a child with autism and the effects on the parent's life.

Visit to a Library takes the scenario beyond 2300, postulating some survival of the next Full Ice Age; the few remaining humans are more systematically isolated than during the COVID-19 pandemic. The humour in this story is part of the delineation of a culture which is hard to imagine.

And lastly, but not least, the street in Up Memory Lane is under threat of demolition to make way for a motorway. But what happens to the characters who live there?

To miss out on reading this stimulating and, at times, amusing, eclectic mix of short stories would be to miss out on a vital part of life and social history.

Lockdown Number One – A Collection of Twenty Winning Short Stories by AudioArcadia.com was published on September 17 and is available on Amazon, also in paperback and as an e-book. For more details, contact rickprod@aol.com or 07432 369298.

AN AMAZING FLOWER MEADOW CREATED IN ROWDE



"One woman went to sow, went to sow a meadow" - see Judy Birch's letter on page 42

OLIVER'S ELECTRICAL Ltd
YOUR LOCAL ELECTRICIAN

Fully Qualified Electrician
Over 15 years experience
Based on The Pound in Bromham

Call Ashley Oliver
07946 588817

The advertisement features a man with a beard and short blonde hair, wearing a green hoodie with "OLIVER'S ELECTRICAL" printed on it. He is standing in a field with rolling hills in the background under a cloudy sky. The text is overlaid on the image in white and black.

