

# Rowde Village News



Queen's Jubilee Picnic  
Pages 26 and 27

June/July 2022





## ART TRAIL

First 4 weekends in JULY  
artists open their studios  
to visitors free of charge

For up-to-date guidelines on visiting artist's studios in 2022 please visit our website at: [marlboroughopenstudios.co.uk](http://marlboroughopenstudios.co.uk)

# OPEN STUDIOS 2022

CALNE DEVIZES HUNGERFORD MARLBOROUGH PEWSEY WROUGHTON

...and including two artists in ROWDE!

Rowde Studio Openings: July 2nd/3rd, 9th/10th & 23rd/24th 11am - 5pm

*Painting by MOS artist Mini De Kersaint*

### Jill Myerscough

01380 729319

07557994513

[jandrandh@gmail.com](mailto:jandrandh@gmail.com)

**4 Coach House Mews, Rowde SN10 2QR**

Opening as above and also by appointment

Jill will be exhibiting paintings in oils and mixed media. Subjects Jill has been working on this year are still life, views in the greenhouse and local scenery. The light, colour and texture are great influences in her work.



### Ann Swan Botanical Artist & Illustrator

**Rowde Court Studios**

**Marsh Lane, Rowde SN10 2NW**

(Entry through green gate opposite Springfield Road)

Vibrant, contemporary plant portraits in graphite and coloured pencils

01380 724788

[www.annswan.co.uk](http://www.annswan.co.uk)

[ann@annswan.co.uk](mailto:ann@annswan.co.uk)

[facebook.com/annswanbotanicalartist](https://facebook.com/annswanbotanicalartist)

Instagram - [#annswanbotanicalartist](https://www.instagram.com/annswanbotanicalartist)

YouTube - Ann Swan Botanical Artist

**Garden Open**

## Editorial

Welcome to a bumper Queen's Jubilee edition of the Rowde Village News. I say 'bumper' as we have eight more pages than we usually have.

With the Queen's Jubilee celebrations coming up you can read our special feature dedicated to the history of the Queen's Jubilee celebrations on pages 25, 28 & 29. You can also read all about our planned events in the village on pages 15, 22, 26, 27, 44, 45 and 46 and I hope to see lots of you there.

This issue we also of course have several excellent reports from our village clubs and societies as well as two very good reports from our schools on pages 11 to 13.

Following the recent Dementia Action Week there's a very good article about how to recognise Dementia on page 36 from the Alzheimer's Society.

Our Wiltshire councillor's annual report is on page 38 and 'Life on the allotments' is back on page 7.

And don't miss all the local news items on pages 30 to 36 including the brilliant news on page 34 that Furlong Close has been saved and a new care provider will be taking over from the 1st of June.

Finally, we have two super new Arts and Crafts people featured on page 51. Please, if you live in the village and are involved in any form of arts and crafts, get in touch so that we can promote you, it's free!

***Mind how you go, Ed***

---

This magazine is brought to you thanks to Jam Print Design & Printing and all the advertisers

### Notice to contributors & advertisers

This magazine is generally printed in black and white in hard copy and delivered free to every home in the parish but additionally it is hosted on the **Village website** in full colour. If anyone does not wish any particular details (photographs, names, contact details, etc) to appear on the World Wide Web then they are advised not include them in their submissions, thank you.

### Contributors please also note:

The deadline for articles and any changes to advertisements is the 15<sup>th</sup> of every second month.

***Inserts:*** Due to the extra work created by inserting leaflets into the magazine and the fact that the team is already stretched, we very much regret we are unable to accept requests of this nature except in very special circumstances, when there will be a small charge.

*Views expressed in this magazine are those of its contributors. They do not necessarily represent the views of the magazine's editorial team.*

## Contents

June/July 2022

**Rowde all about it** (page 4) *News and views from village clubs and organisations*

**The Buzz about Bees** (page 5)

**Rowdey Cow News** (pages 6 & 7)

**Life on the allotments** (page 7)

**Living on the Waterways** (page 10)

**Silverwood School** (page 11)

**Rowde Primary Academy** (pages 12 & 13)

**Rowde Parish Council** (pages 14 to 16)

**The St Matthew's Pages** (pages 18 & 19)

*inc. Church Rotas and details of Services and Events*

**Fun Column & Photo Fun** (page 20)

**The Queen's Jubilee History** (pages 25, 28 & 29)

**Local News** (pages 30 to 36)

**Laura Mayes Annual Report** (page 38)

**Village Diary** (page 45)

**Letters** (page 46)

**Sudoku** (page 48)

**Quick Reference List of Advertisers** (page 48)

**Quick Reference Contacts and Village Guide** (page 49)

**FREE Classified Ads** (page 50)

**Rowde Arts and Crafts** (page 51)

---

## The Magazine Team

Alan Watters (Editor)

Tel: 01380 724788

Email: watters.alan@gmail.com

Suzan Jackett (Assistant Editor)

Tel: 01380 729791

Email: suzijj@rocketmail.com

Julie Baker (Advertising Manager)

Tel: 07796690413

Email: juliebaker72@yahoo.co.uk

Sue & Richard Scrusse (Distribution Managers)

Tel: 01380 729488

Email: scrusefamily@aol.com

---

## Cover Images

The wonderful image on the front cover shows the winning entry by Ellie Wilks in the older children's group of the school's Jubilee drawing competition.

The equally amazing image on the back cover shows the winning entry by Indie Kaye in the younger children's group. Well done to both!

Read about the competition on page 33.



# MONDAY CLUB NEWS

*Bromham and Rowde Day Centre for Older People*

Monday Club is well settled into Bromham Clubhouse at the Social Centre site. We recently enjoyed a talk from Maggie, who told us about the amazing things that Medical Detection Dogs can do. Some are trained as Medical Alert Assistance dogs. Amongst other things, these dogs can alert diabetics before an attack. Bio detection dogs can sniff out cancer and covid in the laboratory. What clever dogs! In mid-May we had a special meeting at Serena's poly tunnel. The weather was lovely and the flowers beautiful. We had a fantastic lunch, including an amazing pavlova and afterwards met the donkeys and Tiddles, the enormous tortoise. Thank you Serena.

**To find out more about Monday Club, please contact Carol - 01380 850925 or Caroline - 01380 850531.**



## ROWDE LADIES CLUB

The 'ladies' met again in the Village Hall on April 12th and this month we all brought along a 'bonnet' which we decorated with flowers, ribbons and bits and pieces ready for the Easter Parade!! The final 'creations' were very impressive!

On May 24th at 2.30pm in the Village Hall we will be making an item for the Queen's Platinum Jubilee and having a quiz and on June 21st we will meet again - programme to be decided.

**Di. Buckland**

## ROWDE BOOK CLUB

*The book for April is 'Crow Lake' by Mary Lawson. Meetings are generally held on the fourth Wednesday evening of the month. Contact Ann on 01380 724788 for further info.*

### BOOK REVIEW

#### **'A Short History of Tractors in Ukrainian'** **by Marina Lewycka**

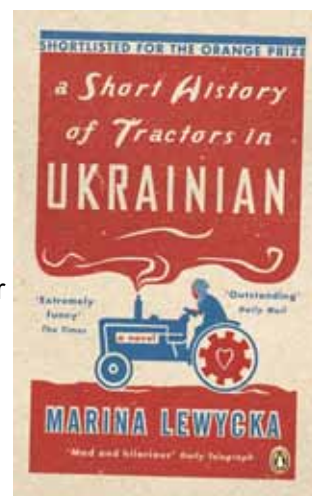
The novel describes the reactions of two daughters when their widowed, 84-year-old father Nikolai marries a highly sexual and much younger Ukrainian immigrant, Valentina. Concerned about Valentina's motives, Nadezhda and Vera are drawn back into contact with each other after a long period of estrangement. They find themselves united against a common enemy in Valentina, whose grasping, manipulative behaviour escalates until the daughters finally succeed in obtaining a divorce for their father.

Their father, Nikolai, a former engineer who emigrated to Britain in the aftermath of the Second World War, is writing a history of tractors in Ukrainian, translated extracts from which appear throughout the novel. In the process of sorting out Nikolai's marital entanglements, Nadezhda also uncovers secrets from her family's history and learns about their experiences during the Ukrainian famine and Stalin's purges.

The action takes place in Peterborough, England, and is narrated by the youngest daughter, Nadezhda, a university lecturer in Sociology.

I enjoyed the read as although quite farcical and often poignant at times there are some truly laugh-out-loud moments and many place names are now, sadly, all too familiar to us through the current conflict in Ukraine.

**Ann Swan**



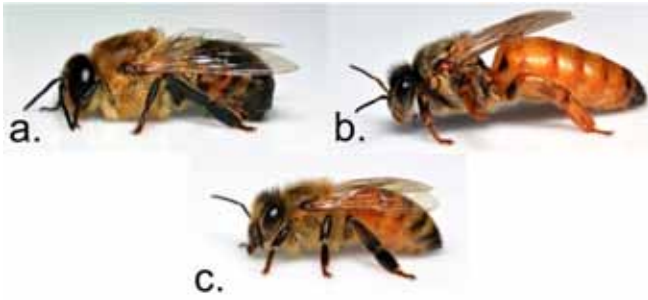


# THE BUZZ ABOUT BEES

## Long live the Queen!

I thought that in this special jubilee edition of the Rowde Village News I would talk about a different queen – the queen honey bee.

Honey bees in the hive are divided into three castes, workers (female), drones (male) and the queen (female). Every healthy hive has one queen bee. There are a few exceptions but nearly always there is one queen. The queen does two things. She produces a powerful (to bees) body odour called queen substance which is a cocktail of chemicals. And she lays eggs. Lots of eggs – at the height of summer, around about the longest day she can be laying 1500 or more eggs a day.



A: Drone, B: Queen, C: Worker

The queen substance binds the colony together; the bees smell and taste the queen and passes this scent around the hive, so all the bees in the colony know the queen is present, that all is well and they can carry on working. If the queen is removed, the bees know in minutes that she has gone and within hours start to do something about it.



Worker bees attending the queen

The eggs the queen lays are the starting point for more bees and every bee in the colony is the daughter (or son in the case of drones) of a queen bee. Workers and queens are both female but only a queen can lay eggs for more workers and queens. Workers live for about 6 weeks in summer; queens live 1 or 2 years and sometimes a little longer. They both develop from fertilized eggs and any one egg can grow

as a queen or a worker. The only difference is what they are fed as larvae. The queen is fed exclusively and lavishly on royal jelly in a special queen cell, for five days. On the other hand the worker gets a bit of royal jelly for three days and then is fed pollen and nectar for another three. It's this that makes the difference. The protein in the pollen causes a worker to develop. (So on a side note: royal jelly is baby bee food and not a cosmetic ingredient! It is produced by young worker bees who gorge on pollen and then produce the white shiny jelly from two glands in the bee's head. Yum!)

Workers are raised all through the spring and summer and to a lesser extent in the autumn and winter. Queens are only raised in three situations: swarming, emergency and supersedure.

Swarming is the bees' way of increasing the number of colonies. The old queen sets off with about half the bees to set up home elsewhere and the bees left behind make a new queen.

Emergency is where the queen has been lost, perhaps disease, or a predator attack or perhaps a clumsy beekeeper (perish the thought). The bees will make several new queens and choose the best.



Queen cells - new queen bee in every one

Supersedure is when the bees replace the queen in a more planned way. The current queen is perhaps old and not producing enough eggs or is in some way not up to snuff. This is the time when there can be more than one queen. The new queen can be in the hive maturing, kept away from the old queen by the workers until the new queen is ready to take over. No interruption in egg supply. The old queen is then dispatched by the workers (bees are ruthless).

I will be at the village picnic on June 4th with an observation hive containing live bees (and a queen, all safely shut in!

**David Brown, Rowde Hall Cottage**  
**01380 722406 davidb.rowde@gmail.com**



# ROWDEY COW NEWS



As I write this we are busy preparing for the Jubilee celebrations!

We are kicking off the celebrations on Thursday 2nd June 3pm – 7pm by having a Rowdey Cow Party where you are invited to come along – you can bring your own picnic or there will be some hot bbq food, snacks and drinks for sale if you prefer.

We will have rounders, football, and Jefferson's Fair are bringing a bouncy castle and a roundabout!

Then on Saturday 4th June we are attending the Rowde Village picnic in the playing fields by the church with our ice cream trike and we are also attending the Bromham Celebrations too!

On the 31st March we celebrated our 10th birthday of the Rowdey Cow which was a huge milestone. This was marked with the good news that we have received the Gold Award from the Taste of the West for Cafes and Tearooms for the 10th year running!

Our Manager, Hannah, has had a busy time recruiting and training our new student staff team for the holidays who have all been amazing!

We then enjoyed a good busy Easter and our Easter Trail was completed by lots of children and the face painting by Poppy Wilkins was also very popular with our younger guests. The Easter Bunny visited us and





our delicious Crème Egg and Mini Egg Ice Cream Flavours made a seasonal return!

Our opening hours are back to the Summertime hours of 9am-5pm Monday to Saturdays with last food orders to the kitchen at 4.30pm and 9am-4pm Sundays (last food orders to kitchen 3pm). We also have a delicious new Summer Breakfast and Lunchtime menu created by our very own Head Chef, Mark Jenkinson. Karen our Ice Cream Making Queen has also been busy creating exciting new flavours for the Summer!

We have added a couple more local suppliers to our list including Dusty Ape Coffee which is freshly roasted in Hilperton and the Little Bakehouse of Devizes Bread which is freshly baked in the mornings and delivered straight to us for our sandwiches.

We would like to welcome the Traybake in Devizes as one of our new wholesale ice cream customers!

The animals are now mostly outside and can be seen in the fields unless it is too hot or raining in which case you can still go and see them in the barn next to the carpark. Please drive carefully and slowly down the drive and in the carpark as we now have free roaming peacocks and guinea fowl as well as children!

We hope you all have a fun Jubilee week and we look forward to seeing you soon!

**Sue**



**Charles S. Winchcombe & Son**  
INDEPENDENT FAMILY FUNERAL DIRECTORS & MEMORIAL CRAFTSMEN  
Est. 1932



- Longest established
- Family owned and run
- Qualified and Licensed
- Available 24 hours a day
- Each funeral personalised
- Pre-paid funeral plans
- Craftsman made memorials



☎ 01380 722500📍 Winchcombe House, 37 New Park Street, Devizes, SN10 1DT🌐 [www.wiltshirefunerals.co.uk](http://www.wiltshirefunerals.co.uk)

## LIFE ON THE ALLOTMENTS

How is it May already?! I really love this late spring/early summer period, so much colour in the trees and hedgerows, the smell of cut grass lingering in the early evenings, it's just so wholesome!

The allotments are starting to come alive again. I've spotted lots of summer veggies that have been planted already. Personally I wait until the beginning of June for planting out, "ne'er cast a clout 'til May is out" is definitely my motto after being caught out by a late frost last year! I would definitely hold off on planting anything like peppers or tomatoes until a bit later. On the subject of tomatoes..... unfortunately we just can't seem to grow them up at the allotments in Rowde. Before they get the chance to ripen we get blight sweep through and within a couple of days lose the whole lot!

We have welcomed two new families up at the allotments in the last couple of months and wish them well with their first growing season! There are two half plots currently available to let if you would like to have a go at growing your own! We are a friendly bunch up there and welcome new people with open arms. My contact details can be found in the back of the magazine or on the Rowde website.

Until the next time folks!

**Sally Green**



*Look what you can grow!*



## Canal Boat Rental

From the Wharf below  
Caen Hill Locks

[www.foxhangers.co.uk](http://www.foxhangers.co.uk)

Choose from our fleet of 14 modern narrowboats, all built new at Foxhangers

Visit our website for complete details of our

**Weekend Breaks**

**Midweek breaks**

**Weekly Breaks**

*More to Foxhangers than boat hire!*

**Bespoke boat building/Re-fits/Painting**

**All aspects of boat engineering**

**Chandlery**

**Tel: 01380 828795**

4 self-catering units and a campsite  
available at Lower Foxhangers  
Visit [www.foxhangers.com](http://www.foxhangers.com) for details

## WE NEED YOU!

Do you have some news to share or just have something to say about the village?

If you can contribute to the content of your Rowde Village News in any way or would like to give us feedback (good or bad) or discuss any magazine issues then please contact:

**Alan Watters** on 01380 724788 or by email at [watters.alan@gmail.com](mailto:watters.alan@gmail.com)

or **Suzan Jackett** on 01380 729791 or by email at [suzijj@rocketmail.com](mailto:suzijj@rocketmail.com)

## DISCLAIMER

Please note that the information given and views expressed in this magazine are generally as supplied by the contributors. Our personal comments may sometimes be expressed in the editorial on page 3 and if our views are given elsewhere, they will be credited as so. In addition, much of the local news items is sourced directly from other publications and the internet. We therefore apologise for any inaccuracies published but regrettably we have no control over this possibility happening. We will however publish corrections notified to us as soon as possible.

**Alan Watters, Editor**

## Magazine Submission Deadlines for 2022 (bi-monthly)

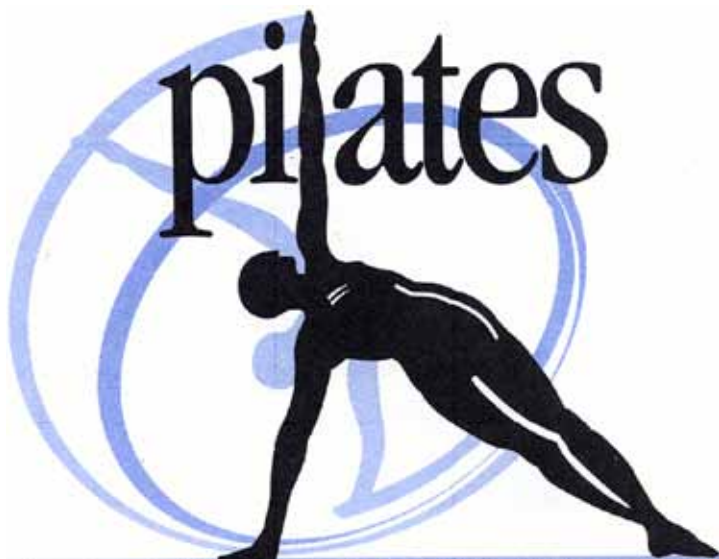
**15th July**

**15th September**

**15th November**

# Move.Every.Day.

**Currently running classes:**



**@ Rowdefield Farm, Rowde:**

Improvers/Intermediates

**Mondays @ 6.00 pm**

**Tuesdays @ 6.45 pm**

**Beginners class: to start soon**

Please email to register interest

To book your place or for any enquiries please email [suzijj@rocketmail.com](mailto:suzijj@rocketmail.com) or call Suzan on 01380 729791

find me on INSTAGRAM: med.pilates or FB: Move Every Day Pilates



# mander duffill

— Est 1947 —


CHARTERED ACCOUNTANTS  
TAX & FINANCIAL ADVISERS

## WHAT WE OFFER:

- Accountancy and Tax Services
- Tax Compliance, Planning and Advice
- International Tax Planning and Advice
- Business Sales and Acquisitions
- Company Restructuring
- Company and Business Start-ups
- Management Accounts, Bookkeeping and VAT Services
- Payroll and Auto Enrolment
- Research and Development
- Financial Services
- Investments
- Protection
- Inheritance Tax Planning
- Pensions and Retirement Planning


## GET IN TOUCH:

 [info@manderduffill.com](mailto:info@manderduffill.com)

 01249 650441

 The Old Post Office  
41-43 Market Place  
Chippenham SN15 3HR

## DEVIZES OFFICE

 01380 711441

 45 New Park Street  
Devizes SN10 1DT

Offices also in Malmesbury  
and London



[www.manderduffill.com](http://www.manderduffill.com)

# AN UNEASY PARADISE - LIVING ON THE WATERWAYS

## ROBYN'S STORY



"I moved onto the canal with my partner Luke, after finishing my undergrad, we were about 24 at the time. I'd moved down from Manchester and spent my university years au pairing for a family with a kind of live/work arrangement, I had my own little bedsit with a garden and easy access to rural walks and when it came time to start thinking about my next steps after university I didn't feel like I had many options beyond renting a room in a shared house. I didn't have any other job at the time and didn't really know what I was going to do but I didn't want to be backed into a corner of taking a job I didn't want just to fulfil rent payments to live somewhere I didn't really want to live! So, I started to explore options outside of the norm, I was already really interested in earthships but that wasn't a viable option as we would need land, and that was the same for a tinyhouse or a yurt and I couldn't drive so living in a van wasn't an option either! Living on a boat kept coming up and we did eventually find the perfect boat, a sturdy old 40ft narrowboat called Rachel. We spent just over two years on the K&A. We absolutely loved it, I remember on our first night being invited to a boaters get together and was told to bring an instrument if we played, I don't know what I expected – maybe some dodgy oasis covers on untuned guitars – but what we were met with was a musicians paradise, people were arriving with instruments all night, a double base, violins, flutes, you name it. It was the most wonderful introduction to a really beautiful and creative community that we will cherish forever. Living on the canal brought a sense of place, peace and meaning to our lives that we still carry today and it was definitely very formative to my current career as a landscape architect. The low outgoings meant I could work part time whilst I pursued other interests. I helped set up the Bristol Fish Project – an urban aquaponics start up based in Bristol and took over the British Aquaponics Association too and when an opportunity came up to study permaculture in the Pyrenees I was able to drop everything and head out there for just over three weeks at very short notice."

## LEWIN'S STORY



"I'd just finished university in Bath where I'd studied fine-art painting. I had a friend at the time who lived on the canal, and that's what inspired me. I thought if I lived on a boat then I wouldn't have to work as much, and I could spend that time creating and focusing on my own pursuits.

I only had £6,000 and that won't buy you much in terms of a narrowboat, so I arrived at the idea of buying a lifeboat. I started by looking at ship-breakers from all around the world, then one day I decided to do a search on eBay and found a guy selling a totally enclosed lifeboat in Wales. It was only two hours away so I went there the next day. But for a wood-burning stove he'd put in, it was totally unconverted. Originally it had been on a gas platform and it still had all the seats for 66 people, as well as water rations and stuff in little packets that were 15 years out of date.

The winter I moved on was one of the worst winters we had had for many years. There was no insulation on the boat, all I had was the stove, and all the condensation on the inside was freezing up. I had a cat at the time called Danny; I would go to bed with as many layers on as I could and the cat would get into bed with me, but in the end it got so cold Danny couldn't handle it anymore and moved to the boat next door. I had the boat for six years, slowly upgrading it so that it was more functional. I learnt a lot living that way. I could never have anticipated the feeling of connection to the land, and seasons, that the hardship of basic living would bring."

***From the series - An Uneasy Paradise : Living on the Waterways***

***Instagram @anuneasyparadise***

***And the softcover book of the same name is available on Amazon or from [sebastienandlouise.com](http://sebastienandlouise.com)***



# NEWS FROM SILVERWOOD SCHOOL - ROWDE CAMPUS

*Building Community, Inspiring Learning*

*Executive Headteacher - Mr Sean McKeown*



Pupils picked up a spade and joined key stakeholders at a ground breaking ceremony to mark the beginning of works to create additional places for children and young people with special educational needs and/or disabilities.

The event at Silverwood School marks a key milestone in a new build of classes and additional facilities at the Rowde campus. The work will extend the existing campus to provide a high quality provision for 350 pupils by September 2023.

The work will include creating a 'school within a school' feel with a community of small teaching clusters that will provide a range of specialist teaching spaces, therapeutic support, and quiet dining. Also planned is a hydrotherapy pool, a



***The year 7 students had a visit from two dinosaurs which they thoroughly enjoyed***



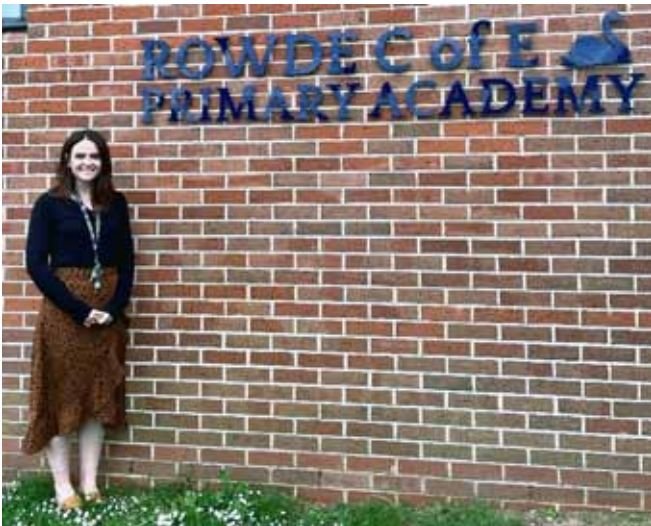
***Students have been busy making sunflowers for a new display – they look fantastic***

new all-weather sport pitch, new playing fields, landscaping, and ecological enhancements. The new facilities create exciting new learning spaces for Early Years/Reception aged children, through to post-16 learners, each with their own designated areas with age appropriate facilities.



# NEWS FROM ROWDE PRIMARY ACADEMY

*Our bright start leads to their bright future*



**Alice Simpson, Acting Head Teacher**

Hello again from us all at Rowde C of E Primary Academy. We are now into Summer Term 1 and we can feel the excitement of all the events and opportunities that arise in the Summer terms... They're my favourite!

Firstly, it is important to formally introduce myself as Acting Head Teacher. My name is Alice Simpson and, as Mr Edy-Berry has gone back to work as Head Teacher at a secondary school, I have taken over here as Head Teacher at Rowde. Having worked here for 18 months (teaching Year 5 and 6, as Head of English and SENDCo), I have a good overall picture of where the school is and where improvements need to continue. We have such a talented team; with brilliant teachers and support staff, and it is a pleasure to lead them as we continue to improve.

What's more, I've absolutely fallen in love with the school, the children and the community and so I'm excited and determined to ensure we thrive again and become more involved with the village. I'd love to meet you and show you around: you can get in touch any time. My email is [head@rowde.wilts.sch.uk](mailto:head@rowde.wilts.sch.uk) and keep your eyes out for events at the school which we're going to open up more frequently. Once again, we're starting some challenging but enjoyable books which really tie together our curriculum.

Birch Class - Handa's Surprise by Eileen Browne  
Ash Class - The Diary of a Killer Cat by Anne Fine  
Maple Class - Wind in the Willows by Kenneth Grahame  
Poplar Class - Anglo Saxon Boy by Tony Bradman  
Cedar Class - Diver's Daughter by Patrice Lawrence  
Oak Class - The Shark Caller by Zillah Bethell

## PLATINUM JUBILEE

**Acorn** Celebrate the Queen's Platinum Jubilee at Rowde C of E Primary Academy **R**

We'd love to see you at our jubilee celebration...

Friday 27th May 3.30 - 5.00  
On the school playground

Refreshments available  
A range of games and activities

Learn Grow Love

Parting will be, as always, limited. Please be mindful of others and walkers there where possible

On Friday 27th May, we are holding an event at the school, on the playground (weather permitting) and you are all welcome! It will be from 3.30 – 5.00 and refreshments, games and activities will be available.

I will also be at the Rowde village picnic on Saturday 4th June and I look forward to meeting you soon.

## UKRAINE FUNDRAISING



On Friday 29th April, we wore blue and yellow in support for Ukraine and we also collected donations to send to those in need. The children showed great respect and understanding about what other people are currently going through. To ensure they are aware of, but are not upset by what's happening, we discussed that some people have had to leave their homes and aren't safe because of war in their country. We used the picture book 'Just Like You' by Jo Loring-Fisher to share this message, that we are unique and different but, in many ways, the same; children are children and have the right to safety. If you want to explore this with your child/ren, the BBC Newsround website is helpful and I'd recommend another picture book: 'Hello! A Counting Book of Kindnesses' by Hollis Kurman.





<b>R</b>	<b>O</b>	<b>W</b>	<b>D</b>	<b>E</b>	
We never stop others from learning. We listen to others and value what they say.	We believe we can be the best. We are hopeful about our future and will take action to improve.	We treat mistakes as opportunities to learn. We recognise when we have got it wrong.	We improve our work to make it even better. We find new ways to succeed.	We always try our best in school and at home. We approach our learning positively.	We nurture and love each other to grow and improve. We look after each other, the school, its equipment and our belongings.
<b>We are Respectful</b>	<b>We are Optimistic</b>	<b>We are Wise</b>	<b>We are Determined</b>	<b>We are Enthusiastic</b>	<b>We are Loving</b>

## WE ARE ROWDE

We have a clear vision at Rowde: children are here to learn, grow and love. Based on the mustard seed parable, we want everyone in our community to nurture each other so we can be the best version of ourselves. Within this, we have key values: Respect, Optimism, Wisdom, Determination, Enthusiasm and Love. These are the values we teach, discuss and want to instil in our pupils. We have always said 'We are Rowde', and the children know this phrase well, but we have now unpicked this so we can refer to these values more explicitly to ensure the highest standard of behaviour; all based on being kind, patient and loving.



*This is what 'We Are Rowde' really means to us*

## COMMUNITY ART PROJECT

I wrote to you in the last village news about welcoming community artists No Added Sugar back to the school. They are joining us on Thursday 9th and Friday 10th June to work with pupils from Year 3 – 6. Using the story 'The Dot', children will design and decorate circular wooden disks to be part of a wooden installation on the panels between the classrooms outside. Parents and anyone from the community can come and also contribute so save the dates and get in touch with me if you'd like to join in!

## ROWDE COLOUR RUN AND SPORTS DAY

On Friday 1st July (weather permitting), we are holding our first colour run! RAFT (parent group raising money for Rowde) are helping to organise a fun-run where children get covered in paint with a picnic lunch altogether and some refreshment stalls, too. As a whole-school community, we're really determined to give our children back some of the social and fun of primary school which hasn't been possible due to the pandemic and the school having to focus on making improvements to teaching and learning.

kindest regards and looking forward to welcoming you to Rowde if you'd like to come and visit,

**Alice Simpson**  
*Acting Head Teacher*



# **GRAY & AMOR LTD.**

**CARPENTRY & PROPERTY RENOVATION**

**Covering all aspects of property renovation and maintenance**

**View our range of services online or call to discuss your project**

**[www.grayandamor.co.uk](http://www.grayandamor.co.uk)**

**CALL (01380) 587006**

# Your Parish Council

Please visit the [rowdevillage.org](http://rowdevillage.org) website; the Rowde Parish Council Facebook page and the village noticeboards for confirmation of forthcoming Parish Council meetings.

A full set of minutes is available on the village website. If you would like to receive a hard copy of the minutes, please contact the Parish Clerk.

## Parish Council Meetings

Since the last edition of the Rowde Village News, the Parish Council has met on 6th April and 11th May 2022.

## Responsibilities

Philip Brown was re-elected as Chairman of Rowde Parish Council. Lisa Wills was re-elected as Vice-Chairman of Rowde Parish Council.

## Jubilee Celebrations!!

The Jubilee is nearly here...please see other pages for more details. Please come and share the celebration with us in the small playing field next to the Church on Saturday 4th June, from 12pm (see centre pages).

Thank you to Barbara, Josh, Rosie, Chris G, Lisa W, Chris S, John D and everyone who has been involved in planning this celebration.

## Community Tidy-up

A village clean-up has been proposed for 21st – 22nd May. Everyone who can is encouraged to tidy around the front of their properties.

The Parish Council will arrange for a road sweeper to come through the village before the Jubilee event as well.

## Youth Club

Talks are taking place to restart the Youth Club in the Village. Josh Wills is leading on the project and has met with Miss Simpson, Headteacher at Rowde School, to discuss plans. If you are interested in becoming involved as a parent helper or in another capacity, please contact Josh at: [rpc.joshwills@gmail.com](mailto:rpc.joshwills@gmail.com)

## Highways

The Community Area Transport Group (CATG) has been renamed the 'Local Highways & Footpaths Infrastructure Group' (LHFIG). Their meeting was held on 28th April 2022 and was attended by C Greenwood and the Clerk.

The Parish Council has three items on the agenda. The first is the proposal to create a footpath at the junction off Conscience Lane. It was agreed to keep the request on the agenda, until the Parish Council has submitted its proposal to create the footpath themselves.

The second item is a request for funding for infrastructure for a Speed Indicator Device (SID). At the time of the meeting, the Parish Council was still waiting for the results of a metro count on Devizes Road, near to the bus shelter.

The final item relates to safety measures at the junction of Close Lane with the High Street. The Highways representatives stated that the road is working well, the bend is signed and there are chevron boards.

## Footpaths

D Pullen has met with the Countryside Access Officer at Wiltshire Council. They discussed the repair needed to the steel bridge at ROWD11. Wiltshire Council has ordered new metal for the bridge and will carry out the repair.

It was agreed that footpath ROWD8, along the Hangings, is very dangerous due to the erosion of the bank. A repair of this nature would not usual be the responsibility of Wiltshire Council, but the landowner instead. However, as it is a matter of urgency, Wiltshire Council has agreed to carry out the repairs.

It was noted that the large branch overhanging the Hangings has been cut down.

## Planning

### Neighbourhood Planning

C Greenwood and the Clerk continue to meet with the Devizes Area Neighbourhood Plan Group.

Rowde is required to find space for 70 new homes up to 2036. Some of this number has been committed already, leaving approximately 45 homes to find.

C Greenwood noted that the landowners who have come forward with land are currently outside of the settlement boundary. The Neighbourhood Plan group confirmed that it would be possible to revise the settlement boundaries as part of the process of developing the plan.

### Planning applications

PL/2021/11597 - OLD DURLETT, DURLETT ROAD, ROWDE, DEVIZES, SN10 1SX Proposal: Erection of free-standing Summer House and Breeze House.

The Parish Council did not object to the application.

## Play areas

### Large Playing Field update

BMX track/Skate Park: Repairs have been carried out to the BMX track (£265). Further repairs will be carried out to the Skate Park (estimated cost of repairs to ramp £190).

### Small playing field update

The Parish Council thanked M Somerville for all of the repairs that he has carried out on the playing fields. The toddlers' picnic bench has been refurbished and other long outstanding repairs have been completed.

Silverlands Play Area: The legal transfer is progressing. L Wills has commissioned a no-obligation design for the play area once it is the responsibility of the Parish Council.

## Allotments

If you would like to rent an allotment plot, please contact Cllr Green for more details. Costs start at £20 per annum.

## Keep in touch!

**Website:** Thank you to A Humphreys for setting up a new village website.

**Noticeboards:** Thank you to S Jeffries & T Jeffries for all of their hard work in refurbishing the wooden noticeboard in Silverlands Road. The costs for the labour were donated back to the Parish Council for the Jubilee event. Thank you to Home Front Fencing for supplying the new posts.

The Parish Council has three noticeboards in the Village: one on the High Street next to the bus shelter, another in Tanis near the postbox and grit bin, and the third one at the entrance to Silverlands Road.

**Facebook page:** Check out the Parish Council's Facebook page for news and events.

**Contacts:** The Parish Clerk can be contacted at [rowdeparishcouncil@gmail.com](mailto:rowdeparishcouncil@gmail.com), or by telephone: 01380 501919. The Chairman, Mr P Brown, can be contacted at [p208brown@btinternet.com](mailto:p208brown@btinternet.com) 07554 311726.

Please see page after this article for a full list of contact details for all of our Councillors.

## Finance Update

Payments were approved for March 2022 invoices (total: £3,804.66)

Admin costs: £1,267.97

Ground's maintenance: £853.69



Playground repairs: £1,683.00

Payments were approved for April 2022 invoices (total: £3,609.48)

Admin costs inc. audit fees: £1,887.75

Ground's maintenance: £916.66

Jubilee celebration: £157.99

Subscriptions: £647.08

It was agreed to donate to the following village groups:

Rowde Village News: £500

Rowde Village Hall: £200

Rowde Parochial Church Council for upkeep of Village Clock: £500.

Link: £250 (proposed by P Brown, seconded by C Stevens)

Presentation of accounts

The Parish Council has approved the accounts for the year 2021-2022. The accounts have been checked by an internal auditor and will be submitted soon for external audit.

Parish Council income for April 2022

Allotment Rents	£260.00
-----------------	---------

Precept	£19,513.14
---------	------------

Interest	£0.43
----------	-------

### My Wiltshire App

- The more reports that are logged through 'My Wiltshire', the higher the priority the issue will be given.
- It is easy to report problems like potholes, dog mess, graffiti, litter and street lighting in your area using the 'My Wiltshire' online form. Reports can be made anonymously, or you can register for free. Once you have registered, you can track the reports you have made, and receive notification once the work has been completed. The more residents report issues, the more likely we are to have them fixed.
- The 'My Wiltshire' page can be accessed through the Wiltshire Council website at: <https://www.wiltshire.gov.uk/mywilts-online-reporting>

### Concerns

If you have any local concerns about footpaths, hedges, allotments, play facilities, or anything village related, we would like to hear from you. We value your input and suggestions and will try to help.

You can contact us through the Rowde Parish Council Facebook page, or by e-mail: [rowdeparishcouncil@gmail.com](mailto:rowdeparishcouncil@gmail.com), or by telephone: 01380 501919.

### Police Matters

If you need to report a crime:

Please dial 101 to report a crime and 999 in an emergency.

It is possible to follow the Police on:

Twitter <https://twitter.com/wiltshirepolice>

Facebook <https://www.facebook.com/wiltshirepolice/>

Or sign up to Community Messaging <https://www.wiltsmessaging.co.uk/>

### Dates for the diary

Parish Council meetings dates can be found in the village diary at the back of the magazine. We invite all villagers to attend, to observe and to make use of the public question time at the Parish Council meetings.

**A full set of minutes is available on the Parish notice boards and on the village website.**

## OUR VILLAGE JUBILEE CELEBRATIONS



### Platinum Picnic in the Playing Field (next to the church)

Why not make your own Jubilee hat and wear it?

Please confirm you and your family's participation on the events page on the 'Rowde all about it' Facebook.

Can you give a lift to an elderly or disabled person?

There will be a few chairs

Parking is limited Toilets available

Dogs permitted on a lead

The Church and the Village Hall will be open

### Calling all Teddies!

Come for an exciting ride up to the church tower and down by parachute!

### Still needed for the picnic

Raffle prizes, please deliver to 4 Maundrell Close or bring to the picnic

Gazebos (for shade )

Plants for the plant exchange table (labelled if possible)

Some streets are planning street parties on Sunday 5th. This is not difficult in cul-de-sacs or closes if the residents agree.

### Diary of Special Village Events for the Queen's Platinum Jubilee

#### Thursday 2nd June

Rowdey Cow - Family Picnics and children's activities - Barbecue and Bar 3pm - 7pm

George and dragon - Quiz 3.00pm - Barbecue 4.00pm

Cross Keys - Bingo from 7.30pm Start 8.00pm

#### Friday 3rd June

St Matthew's Church - Salads and Puds 6.00pm

Cross Keys - Party/Disco 7.30 pm

#### Saturday 4th June

Small Playing Field - Village Picnic 12.00 - 5.00pm

Cross Keys - Cocktail Night

#### Sunday 5th June

Street parties - Arranged by residents

St Matthews Church - Songs of Praise 4.00pm

Cross Keys - Carvery from 12.30pm Quiz 8pm

*The Rowdey Cow, Cross Keys and George and Dragon will be open throughout the 4 days.*



## ROWDE PARISH COUNCIL

Philip Brown	Chair/Planning	p208brown@btinternet.com	07554 311726
Lisa Wills	Vice-Chair, Social Media, Primary School Liaison	rpc.lisa.wills@gmail.com	01380 730078
John Dalley	Sports & Playing Fields	rpcjdalley@outlook.com	07592 063789
Debra Pullen	Footpaths, Bridleways	rpc.dpullen@gmail.com	
Chris Stevens	Village Appearance and Safety	rpc.cstevens010@gmail.com	
Barbara Zaccarelli	Village Events	barbarazaccarelli@yahoo.com	01380 726316
Sally Green	Allotments	sallygreenrpc@yahoo.com	
Mandy Humphreys	Furlong Close liaison, Website	loireuncorked@me.com	
Josh Wills	Playing fields; Youth Co-ordinator	rpc.joshwills@gmail.com	
Chris Greenwood	Neighbourhood Planning, Tree Officer, Roads & Transport	cj_g@me.com	07525 185514
Pat Bryant	Planning	rpcpatbryant@outlook.com	01380 698567
Rebekah Jeffries	Clerk	rowdeparishcouncil@gmail.com	01380 501919

## Wiltshire County Councillor for Rowde

Laura Mayes	Wiltshire Councillor	laura.mayes@wiltshire.gov.uk	
-------------	----------------------	------------------------------	--

## WILTSHIRE COUNCIL - Useful phone numbers

Libraries:	01225 713000	or mobile/outside Wiltshire:	01225 777234
Parking:	01380 734812	School admissions:	01225 713010
Pest control:	01380 734721	School special educational needs:	01225 718095
Planning:	01380 734812	School transport:	01225 713004
Recycling boxes - Hills Waste:	0845 6032085	Social care – adults:	0300 456 0111
Registration - Births, Deaths & Marriages:	01225 713007	Social care – children:	01225 773500
Roads & pavements (Clarence) Freephone:	0800 232323	Street care and cleaning:	01380 734849



# APT GROUP SERVICES

**01380 711781**

[www.aptgroupservicesltd.co.uk](http://www.aptgroupservicesltd.co.uk)

**Approved Building and Electrical Contractors based in Wiltshire**

Building Services

Approved CV Charger Point Installer

Electrical Services

Lighting Design

Smart Home Technology

Home Improvement

Fire Alarm and Emergency Lighting



**TRUSTMARK**  
Government Endorsed Quality



# GAIGER BROTHERS LTD

## Building Contractors

6 Northgate Street, Devizes, Wiltshire SN10 1JL

Tel: (01380) 722412

Fax: (01380) 727890

## The Wiltshire Bobby Van Trust



Registered Charity No 1153790

The Wiltshire Bobby Van Trust provide a Courtesy Home Security Service for elderly, vulnerable and disadvantaged people living in Wiltshire, who have become, or are at risk of becoming victims of house crime or domestic abuse.

Our operators will carry out a full security and fire risk assessment before fitting the appropriate security devices. If you are over 60 or vulnerable due to a mental or physical disability and don't feel that you have adequate home security please contact us to arrange a visit.

Tel No: 01380 861155 Email: [bobbyvan@wiltshire.police.uk](mailto:bobbyvan@wiltshire.police.uk)  
[www.wiltshirebobbyvan.org.uk](http://www.wiltshirebobbyvan.org.uk)



## BEWLEY

Funeral Directors Limited

*Our family are here for your family*

**Devizes local family funeral service EST. 1970**

**Three generations of experience, personal values and professional service**

24 Hour Service | Home Visits | Simple or Bespoke Funerals | Pre-paid funeral plans | memorials

**Devizes 01380 728008**

Office & Chapel: 64 New Park Street, Devizes, SN10 1DP  
Over 100 reviews at [www.bewleyfunerals.com](http://www.bewleyfunerals.com)



**June and July Worship in Rowde, Bromham and Sandy Lane**  
 Services in St Matthew's, Rowde are in bold.. *Services in Bromham and Sandy Lane*  
 are in *italic*. Please visit our website, for the latest information on our services:  
**Everyone is very welcome at all our services**



Date/Time	Service
<b>June 5</b> 8am <i>10am</i> 4pm	<b>Pentecost</b> <b>Holy Communion (BCP), Rowde</b> <i>Holy Communion, Bromham</i> <b>Songs of Praise for the jubilee, Rowde</b>
<b>June 12</b> 8am 10am	<b>Trinity Sunday</b> <i>Holy Communion (BCP), Sandy Lane</i> <b>Holy Communion, Rowde</b>
<b>June 19</b> 10am	<b>Trinity 1</b> <b>Holy Communion, Bromham</b>
<b>June 26</b> 8am 10am	<b>Trinity 2</b> <i>Morning Prayer, Sandy Lane</i> <b>Morning Prayer, Rowde</b>
<b>July 3</b> 8am <i>10am</i>	<b>Trinity 3</b> <b>Holy Communion (BCP), Rowde</b> <i>Holy Communion, Bromham</i>
<b>July 10</b> 8am 10am	<b>Trinity 4</b> <i>Holy Communion (BCP), Sandy Lane</i> <b>Holy Communion, Rowde</b>
<b>July 17</b> <i>10am</i>	<b>Trinity 5</b> <i>Holy Communion, Bromham</i>
<b>July 24</b> 8am 10am	<b>Trinity 6</b> <i>Holy Communion (BCP), Sandy Lane</i> <b>Holy Communion, Rowde</b>
<b>July 31</b> <i>10am</i>	<b>Trinity 7</b> <i>Holy Communion, Bromham</i>
<b>August 7</b> 8am <i>10am</i>	<b>Trinity 8</b> <b>Holy Communion (BCP), Rowde</b> <i>Holy Communion, Bromham</i>

Please visit our website, for the latest information on our services: <https://www.achurchnearyou.com/church/9690/> or check the Church notice board for further information

Or contact the Administrator:

Sarah Bowler

sarahbromhamandrowde@gmail.com

07876142112

**Private Prayer**

The churches within our Benefice are also open for private prayer on the following days:

Monday to Saturday - St Matthew's Rowde 10am – 4pm

Monday to Saturday - St Nicholas Bromham 10am – 4pm

Sundays - Rowde & Bromham Church open when possible

Every day - Sandy Lane 10am – 4pm

**Events**

Salads & Puddings Night Friday 3rd June 2022

At St Matthew's Church, Rowde @ 6.00pm.

Cold Meats, Cheese, Quiche and a range of salads, followed by a selection of Puddings. Please bring your own glasses and drinks.

Tickets: adults £7/ children (under 12) £3 Must be bought in advance please!



Please contact Nicola Brown: 01380 722406/  
07999 923607 nicola\_brown@talk21.com

### **Regular Activities**

#### **Rowde Church Café on Tuesdays 10.45-12:00**

Come and join us for coffee, cake and time to chat. Everyone welcome, from anywhere in the benefice!

#### **Open the Book**

For more information, contact Fran Hall: 07989758412 or Sarah Bowler: 07876142112 sarahbromhamandrowde@gmail.com

#### **Growing in Faith - Prayer**

For more information please contact Caroline Culley carolineculley1@outlook.com

#### **Mothers' Union**

Please contact Carole Myer for details: 01380 850706 or ed.myer@btinternet.com

#### **Church Cleaning**

For more information contact Jane Moss on 01380 729160 jmosscadet@gmail.com  
Maureen Hiscocks 01380 725406 for the brass cleaning rota.

#### **Choir**

Choir Leader: Vacant

Choir Practise Junior and Adults will return as soon as possible.

Practice: 2nd and 4th Fridays of the month - at 6.30pm. Please contact Nichola Brown nicola\_brown@talk21.com 01380 722406

#### **Bell Ringing**

For further information please contact the Tower Captain: Richard Heath rich.p.heath@gmail.com/ or 01380 722379

#### **Flower Arranging**

Fortnightly rota

1, 5 & 12 June - all arrangers for Queen's Jubilee

19 & 26 June - Leah Bevan

3 & 10 July Jane Sartin

17 & 24 July Carole Nutland

31 July & 7 August - Barbara Zaccarelli

New members are most welcome to join the team.

For further information please contact: Jane Sartin j.sartin@talktalk.net or call 01380 727446

### **Contact Details**

**Rector:** Vacant

**Associate Priest:** Revd Heather Smith  
07702 113544 revheathersmith@gmail.com

**Lay Minister:** Caroline Culley  
07557 983940 carolineculley1@outlook.com

**Churchwarden (Bromham)**

**John Drew 01380 850908**

**Sandy Lane (pro warden)**

**Ernest Escott 01380 850405**

**Benefice Administrator:** Sarah Bowler

07876 142112

sarahbromhamandrowde@gmail.com

**Website:** A Church Near You

<https://www.achurchnearyou.com/church/9690/>

**Benefice Facebook page:** Churches of Rowde and Bromham

<https://www.facebook.com/groups/439328832796693/>

### **A Message from Rev'd Heather and Caroline**

We are settling into our new interregnum regime. Although it seems a little strange at first, there is plenty we can do to keep things going!

Both PCCs got together at Rowde church to meet with Sue Groom, the Archdeacon. The post of Rector for our benefice will be advertised as 3 days a week and Sundays. Whilst not quite full time, we are pleased that the post has not been cut further. The timescale means that we will advertise the job in the autumn and hope to have a new Rector in post in the early part of next year.

The first step towards appointing a new priest is to write a parish profile. This is a document that showcases our parishes and demonstrates why they are a great place to work. If you have any good photos of life in our villages, or there's something you think we should mention, speak to Revd Heather or Caroline or a member of either PCC.

The services in our benefice will follow the pattern below during the vacancy. There will be no monthly 8am services in Bromham. We hope these will be reinstated when a new rector is appointed.

Revd Heather works two Sundays a month and will be taking services across the benefice. On other Sundays Caroline and Fran will be leading non-Eucharistic services, or retired clergy will be standing in for Eucharists. See below for details.

During the vacancy please contact:

Revd Heather for matters relating to baptisms and weddings and Caroline for funerals.

**LAURENCE PLUMB**  
**Interior & exterior Painting/  
Decorating**  
**Free Estimates**  
**Tel: 01380 728174**

**Coronavirus (COVID-19) Travel Alert**  
**Travel restrictions may apply and**  
**transportation services are subject to change.**  
**Please check online or phone 01249 444444**  
**before you travel.**

## FUN COLUMN

*Welcome to this month's fun column where we are featuring marriage jokes.*

1. Philip: I'm a man of few words.  
Charles: I'm married, too.
2. The five essential words for a good marriage: 'I apologize' and 'You are right.'
3. A wedding ring may not be as tight as a tourniquet, but it does an equally good job of stopping circulation.
4. If your partner wants to learn how to drive, don't stand in their way.
5. My opinions are my wife's, and she says I'm lucky to have them.
6. A successful man is one who makes more money than his wife can spend. A successful woman is one who can find such a man.
7. A woman has the last word in any argument.  
Anything a man says after that is the beginning of a new argument.
8. There are two times when a man doesn't understand a woman - before marriage and after marriage.
9. The Minister noticed the bride was in distress so asked what was wrong. She replied that she was awfully nervous and afraid she would not remember what to do. The Minister told her that she only needed to remember three things.  
First the aisle, cos that is what you'll be walking down.  
Secondly, the alter because that is where you will arrive.  
Finally, remember hymn because that is a type of song we will sing during the service.  
While the bride was walking in step with the wedding march, family and friends of the groom were horrified to hear her repeating these three words...  
... "Aisle, alter, hymn" (I'll alter him).

***Do you have any jokes to tell? Send them in!***

## PHOTO FUN

This issue we have a couple of fun pet photos



Do you have any interesting or amusing photos of people, pets or anything else? Send them in!





# TOWNSEND BARN NURSERY POULSHOT



For pre-school children age 0-5 years  
Open all year from 8am - 6pm

The Nursery makes full use of its rural setting, and focuses on outdoor play as well as indoor activities. Home cooked food provided.

Children's gardens & greenhouse | Vegetable plot  
Tennis court | Nature garden | Outdoor wood oven  
Swimming with Parents | Sandpit | Outings & Trips

For further details please contact:  
01380 828141 / 07976 899946  
[www.townsendbarnnursery.co.uk](http://www.townsendbarnnursery.co.uk)



## Tom Ashpole **TREE SURGERY** All Aspects of Tree Surgery Covered



Including Hedgework And Stumpgrinding  
NPTC certified, Cert.Arb (RFS) Fully Insured

Tel 01380 699473 Mob 07929 898544

Email: [enquiries@wiltshiretreecare.co.uk](mailto:enquiries@wiltshiretreecare.co.uk)

Web: [www.wiltshiretreecare.co.uk](http://www.wiltshiretreecare.co.uk)

## LOCAL HONEY FOR SALE

Rowde Hall Cottage  
High Street, Rowde SN10 2PL  
(Opposite Cross Keys)  
01380 722406  
davidb.rowde@gmail.com  
£5 for a 12oz jar (340g)



### PAINTING & DECORATING SERVICES

**Your friendly, female decoratress!**

All decorating or painting projects considered,  
including children's murals

**I am tidy, reliable and competitively priced**

**Call Carolynn on 07881 200218**  
or email [ceeceedecoratress@gmail.com](mailto:ceeceedecoratress@gmail.com)



## SALADS & PUDDINGS NIGHT

Friday 3<sup>rd</sup> June 2022

At St Matthew's Church, Rowde

@ 6.00pm

Cold Meats, Cheese, Quiche and a range of salads  
Followed by a selection of Puddings

Please bring your own glasses and drinks

Tickets: ADULTS £7 / CHILDREN (Under 12) £3  
Must be bought in advance please!

Please contact Nicola Brown  
01380 722406  
07999 923607  
[nicola\\_brown@talk21.com](mailto:nicola_brown@talk21.com)



# KFR

refurbishing furniture  
reviving communities

### Kennet Furniture Refurbiz

The Furniture and White goods charity.

To donate items or purchase please call:

**01380 720722 / 720200**

Unit 6B, Hopton Industrial Estate,  
Devizes, SN10 2EU.



## MTM

MARKET TOWN MEMORIALS

21 Forty Acres Road, Devizes SN10 3DF

Call to arrange an appointment  
Monday to Saturday  
Evenings available

**01380 829630**  
**07951 536529**



New Memorials  
Renovations  
Additional Inscriptions  
Bespoke Designs  
Pet Stones  
House Signs

Ask for a free brochure

[www.markettownmemorials.co.uk](http://www.markettownmemorials.co.uk)  
Email: [danbod1981@gmail.com](mailto:danbod1981@gmail.com)



**BRAMM**



CALL TODAY:  
07934 422 110

LIGHT  
CLEANING

SHOPPING

SOCIAL  
ACTIVITIES

**SILVER LINING SUPPORT**

PET  
CARE

GARDENING

Silver Lining Support offers a range of services to  
enable you to live independently in your own home

SITTING  
SERVICE

GP  
APPOINTMENTS

LAUNDRY &  
IRONING



# 4CHILDREN



## What your 4Children Children's Centre offers

Groups and services that run from your local centre are designed for families with children under five. Your centre can provide you with information or advice on all aspects of family life, so drop in to visit us or call one of our staff team.



**For further information or to get involved, telephone 01380 739835**

Sure Start Wiltshire Council 4Children

## Modern & Traditional Designed Memorials **M J SLY**

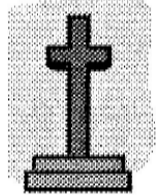
Memorial Stonemason - New Memorials  
Additional Inscriptions - Restorations  
Free Home Visits & Brochure

Tel: Marlborough (01672) 516797

[www.mjsly.co.uk](http://www.mjsly.co.uk)

Email: [info@mjsly.co.uk](mailto:info@mjsly.co.uk)

Workshop & Showroom at  
Pelhams Court, London Road  
Marlborough



The Board Room

Renelec House

46, New Park St,

Devizes

SN10 1DS

[sycamorecentre.devizes@yahoo.co.uk](mailto:sycamorecentre.devizes@yahoo.co.uk)

[www.careconfidential.com/devizes](http://www.careconfidential.com/devizes)

The  
**SYCAMORE**  
Centre 

07762 382913

A Pregnancy Choices Centre

# OLIVER'S ELECTRICAL Ltd

## YOUR LOCAL ELECTRICIAN

Fully Qualified Electrician

Over 15 years experience

Based on The Pound in Bromham

Call Ashley Oliver

07946 588817



## The Marie Curie Urgent Appeal

Right now, more people need us than ever before. Our nurses, hospices and Support Line have been here through it all, day and night, caring for dying people with and without coronavirus. We urgently need your donations to help continue our vital work.

To donate go to <https://mariecurie.org.uk/donate/>



If you're living with a terminal illness or caring for someone, we're here with practical and clinical information, and emotional support.

We're here for family and friends too – no one is turned away, so please don't hesitate to call if you need us.

All the support we offer is free and open 8am-6pm Monday to Friday and 11am-5pm on Saturdays. **Helpline 0800 090 2309**

## ALLOTMENT VACANCIES



**Are you a keen gardener who needs more space?**

**If you are interested in renting an allotment, please contact:**

**Sally Green**

**[sallygreenrpc@yahoo.com](mailto:sallygreenrpc@yahoo.com)**

**Tel: 07824 832424**

Rowde Parish Council



**Heather Smith**  
North Wessex Therapies

*Change and Wellbeing Therapy*

**cognitive behavioural therapy - hypnotherapy - relaxation -  
mindfulness - stress management**

**Face to face appointments now available at The Therapy Rooms, 32  
New Rd, Chippenham and in Bromham**

**anxiety - stress - phobias - chronic pain - habits - poor sleep  
life goals: career - personal life - sports**

**Call for a chat or email**

**t: 07702 113544**

**e: [heather@northwessextherapies.com](mailto:heather@northwessextherapies.com)**

**w: [www.northwessextherapies.com](http://www.northwessextherapies.com)**



# FEATURE - THE QUEEN'S JUBILEE HISTORY

*As the Queen's Jubilee 2022 approaches we delve into the major milestones that paved the way for this huge moment in her reign..*



## QUEEN'S SILVER JUBILEE - 25 YEARS

The first Queen's Jubilee was marked in 1977 when she had then reigned for just 25 years. This momentous anniversary was celebrated with a packed schedule of engagements that summer after she marked her official Accession Day in February at Windsor Castle with her family. For her first Jubilee the Queen had one mission: to meet as many people as possible!

Setting out on a large-scale tour, according to the Royal Family's official website, no other monarch had ever visited so much of the country in just three months. Always up there as one of the most hard working royals, Her Majesty undertook six Silver Jubilee tours in Britain and Northern Ireland, covering an astonishing 36 counties.

And it wasn't just within the UK that the Queen's jubilee celebrations honored this huge occasion. She and the Duke of Edinburgh set off throughout the year and traveled a staggering 56,000 miles as they visited Australia, New Zealand, Tasmania, Western Samoa, Tonga, Fiji, Papua New Guinea, Canada and the West Indies.

The Queen's Silver Jubilee was brought to an awe-inspiring close in June, 1977 when the Queen lit a beacon at Windsor Castle. This then started off a chain of beacons being lit across the country and Her Majesty then drove in the Gold State Carriage to St Paul's Cathedral the next day for a special Service of Thanksgiving.



*Photo by Graham Wiltshire / Getty Images*

She was then accompanied by fellow royals to lunch at the Guildhall. At the lunch the monarch made an impassioned speech she reiterated that she did not "regret or retract one word" of the pledge she made when she became Queen to serve the people. It's estimated that around 500 million tuned in to watch the Jubilee procession return down the Mall and the Queen made several appearances on the Buckingham Palace balcony. For the final event, the Queen took to the river for a progress from Greenwich to Lambeth that echoed the barge trips of the first ever British Queen Regnant, Queen Elizabeth I.

The Queen opened the Silver Jubilee Walkway and the new South Bank Jubilee Gardens and there was then a firework display, and a procession of lighted carriages to take her back to the Palace. In honor of her first major milestone, the Queen's Silver Jubilee Appeal was set up to help raise funds to support young people as well as to encourage them to serve others in the community.

## QUEEN'S RUBY JUBILEE - 40 YEARS



*Photo by Tim Graham / Getty Images*

Whilst many might not immediately think of a Ruby Jubilee when we think back to those celebrated by Queen Elizabeth II, as the longest-reigning monarch in British history, she technically has had a Ruby Jubilee too. This marks 40 years of a monarch's reign which the Queen reached back in 1992. Sadly, this wasn't one of Her Majesty's favorite years and 1992 was described by her as her "Annus Horribilis" or "Horrible Year" in a speech. Not only did a fire break out at Windsor Castle, but three of the Queen's children's marriages ended in separation that year. The Queen also didn't celebrate her Ruby Jubilee with widespread events as she has done with other major milestones.

## QUEEN'S GOLDEN JUBILEE - 50 YEARS

By the time the Queen's Golden Jubilee year began in 2002 it's no surprise that the Royal Family returned to having an exciting and pretty extensive programme of events to honor her 50 years on the throne. For this particular one

*(continued on page 28)*



# Jubilee Picnic

**Saturday 4th June, 12 - 5pm**

In the small playing field next to the church in Rowde.

Live music all afternoon!

Bring a picnic and a blanket and let's all celebrate with our village friends and neighbours.

Tea, Pimms, beer, Rowdey Cow ice-cream and cakes by Kirsty of Rowde all available in the field.

Skittles, tombola, games, raffle, and juggling by Arthur Plumb.  
All proceeds to the Duke of Edinburgh's Award.

Wear your Jubilee Hat and you might win a prize in the child or adult category!

*"I hope this Jubilee will bring together families and friends, neighbours and communities"*

- Our Queen's message to us.

For more information please contact

[rowdeparishcouncil@gmail.com](mailto:rowdeparishcouncil@gmail.com)





**PIC IN ROWDE**

## Jubilee Picnic Entertainment!

**Chris Ashburn**

Bristol singer of songs from many decades

**Chippenham Town Band**

**Archie Combes**

Singer and Keyboards

**Children's Creative Activities**

**Face Painting**

**The Buzz About Bees**

**Kennet and Avon Canal Trust**

**Parking Limited**

**Dogs on Leads**

**Straw bales and some chairs are available  
Village Hall and St Matthew's open**

**Admission Free**

**For a craft or produce table call 726316  
Raffle prizes can be taken to 4 Maundrell Close**

**Why not decorate your home and  
garden?**





## FEATURE - THE QUEEN'S JUBILEE HISTORY *(continued from page 25)*

of the Queen's jubilees there were six themes ranging from celebration to community and service, as well as past and future, giving thanks and the Commonwealth. In keeping with this final theme, Her Majesty and Prince Philip once again jetted off around the world.

The royal couple toured throughout the year, traveling to Jamaica, Australia, Canada and New Zealand as well as every UK region, including islands such as the Isle of Skye. The Queen and the Duke of Edinburgh were also hosted by the Prime Minister at Number 10 Downing Street for a dinner and the monarch addressed the Joint Houses of the Houses of Parliament at Westminster Hall.



*Photo by Tim Graham / Getty Images*

The National Beacon was once again lit after the evening drew to a close with a magnificent fireworks display, following on from 2,006 beacons in a chain across the entire Commonwealth. And it might come as no surprise to fans that Her Majesty once again delivered a poignant speech at this pivotal moment in her reign.

"I would like to give my heartfelt thanks to each and every one of you", she said During a lunch at Guildhall on 4 June, before going on to add, "Thank you all for your enthusiasm to mark and celebrate these past fifty years."

### **QUEEN'S DIAMOND JUBILEE - 60 YEARS**

Following on from the devotion to royal duties displayed in the previous Jubilee celebrations, the Queen's Diamond Jubilee featured a similar level of commitment to meeting people from across the UK and Commonwealth. Her Majesty, who had by this time surpassed Queen Victoria to become Britain's longest-reigning monarch, set out with Prince Philip to travel as widely as they could across the Home Nations.

The royal couple visited every region that year whilst other members of the extended Royal Family flew overseas to tour the Commonwealth realms. Whilst the future King, Prince Charles, and the Duchess of Cornwall

delighted fans in Australia, New Zealand, Papua New Guinea and Canada, the Queen's grandchild Prince William and Kate Middleton, Duchess of Cambridge, went to Tuvalu and Princess Anne visited South Africa.

The Queen started off the Diamond Jubilee central weekend with an appearance at the Epsom Derby before Big Jubilee Lunches were held the next day. This built upon the Big Lunch initiative and the Big Jubilee Lunches encouraged people to share lunch with friends and neighbors to celebrate the Diamond Jubilee.

There was also the much-photographed Thames Diamond Jubilee Pageant which featured up to 1,000 boats on the Thames from across the world. Riding at the center of this flotilla was the Queen herself on the Royal Barge with Prince Philip, glimpsed by the excited crowd.

And, just like for previous Jubilees, there was also a Diamond Jubilee Concert at Buckingham Palace, this time organized by none other than Take That star Gary Barlow for the BBC. It's reported that the Queen left Gary stumped with questions ahead of the event but she later seemed to enjoy it as she took to the stage.



*Photo by Arthur Edwards / Getty Images*

After the concert the monarch then lit the National Beacon and there was one again a service at St Paul's Cathedral, a lunch at Westminster Hall and a procession to Buckingham Palace, as well as a balcony appearance. That year the Queen's Diamond Jubilee Trust was set up to take donations from anyone who wished to give a gift to the monarch.

According to the Royal Family's website, the funds raised by the trust have gone towards different initiatives such as Queen's Young Leaders, which supports young community trail blazers across the Commonwealth

### **QUEEN'S SAPPHIRE JUBILEE - 65 YEARS**

The Queen's Jubilee celebrations are typically held to mark decade milestones, aside from the Silver Jubilee and the Sapphire Jubilee. The latter commemorates 65 years of the Queen's reign, though it's perhaps not as frequently thought of as the others and didn't involve the unveiling of a major schedule of events and engagements.



## FEATURE - THE QUEEN'S JUBILEE HISTORY *(Continued)*

A 41-gun salute was fired in Green Park in London to mark the Queen's Sapphire Jubilee, with more gun salutes taking place in Edinburgh, York and Cardiff.



*Photo by Chris J Ratcliffe / Getty Images*

A 2014 portrait of Her Majesty by photographer David Bailey was reissued for the occasion and features the Queen wearing a magnificent pair of sapphire earrings with a matching necklace.

These were reportedly given by King George VI as a wedding gift when the Queen married Prince Philip in 1947. Though not celebrated as widely, the Queen's Sapphire Jubilee was of huge significance to her as it made Queen Elizabeth the first British monarch to mark 65 years on the throne.

### **QUEEN'S PLATINUM JUBILEE - 70 YEARS**

The Queen's Platinum Jubilee year started in February 2022 but the central weekend

has yet to take place. The packed schedule of celebrations will be held over a four-day bank holiday in the UK from 2nd June to 5th June. Events will include the Queen's Birthday Parade, Trooping the Color, a Platinum Jubilee Pageant, a Platinum Party at Buckingham Palace and the traditional Service of Thanksgiving.

Already the Queen has revealed an epic sculpture in honor of the Platinum Jubilee and although she's scaled back Platinum Jubilee appearances, it's thought that there will be several events attended by the monarch this summer. The Queen will make a highly-anticipated appearance on the Buckingham Palace balcony as we've seen in previous years and has now confirmed that she'll be joined only by members of the Royal Family who are undertaking official public duties on her behalf. As she marked Accession Day 2022 and the official start of her Platinum Jubilee year in February, Britain's longest-reigning monarch released a special message in which she renewed the pledge she'd made all those years ago.

The Queen went on to declared, "And so as I look forward to continuing to serve you with all my heart, I hope this Jubilee will bring together families and friends, neighbors and communities - after some difficult times for so many of us - in order to enjoy the celebrations and to reflect on the positive developments in our day-to-day lives that have so happily coincided with my reign."



*Photo by Joe Giddens / Getty Images*

# Local News



## **SPEED WATCH NEEDS YOU!**

Rowde Community Speed Watch Team are urgently in need of Volunteers.



Are you a resident in the Rowde area, with or without children at the local school?

Do you have to walk with or without a pram, a dog, or a child, along the main Devizes Road through the village? If so you will be aware of how narrow the pavement is on this very busy main road.

Not only is Devizes Road subject to heavy traffic but many people living in the area of Marsh Lane will also be used to the traffic on this busy road, not all of which keeps to the speed limit.

The local Community Speed Watch (CSW) is run by Local communities, (not the Parish Council), it gives residents a chance to help combat speeding in their local area.

The object of the exercise is to drive down speed, driving up safety in local communities.

It may be helpful to remind people that a child hit by a car travelling at around 30 miles per hour has an 80% chance of survival but at 35 miles per hour the chance of survival is reduced to 50%. A child hit at 40mph will be thrown some 30 metres and will have very little chance of surviving.

We are in urgent need of volunteers to assist the present team to carry out our task.

Volunteers can be anyone 18 or over and will be required for only a few hours a month ie maximum of 10 hours, at one hour intervals.

Even if you are unable to volunteer but are residents in the area please help the Speed Watch Team to achieve their objectives in the following manner:

When driving through the village try and keep an eye on your speedometer to help keep within the 30 mph limit through the village. If you drive a manual car try changing down a gear as this will help control the speed of your vehicle remembering that at only 35 miles per hour if you hit a pedestrian their chance of survival is pretty poor.

If you are interested in joining the team then please contact me at:

wajeffries888@gmail.com or phone 01380 729989

**Tony Jeffries**

**CSW Team Leader**

## **ROWDE RESIDENT WINS AWARD!**

The civic awards took part at the end of April. The Gazette missed it. Liz Denbury, who moved to Rowde from Devizes recently, won a Civic award for 'Commitment to the People' For the Waiblingen Way fire fund. Liz did the fundraising, furniture collecting & clothes collecting, along with Christmas trees and present collecting for the fire that took place a couple of years ago in Waiblingen Way.



*At its height, 35 firefighters were involved in tackling the blaze at the flats*





## COMMONWEALTH GAMES: Queen's Baton Relay to visit Caen Hill Locks at Rowde.



Awards also went to CUDS, Search & Rescue, Fibromyalgia support group and a few others.

Liz was proud and very humbled to be awarded a Civic Award for Commitment to the People and for the fundraising and organising of items for the people of the Waiblingen Way fire. There was a lovely celebration church service and afternoon tea.

Liz has stayed friends with some of those from the flats, including a family that now live in Rowde and who she will visit now that she has also moved here.

This article is dedicated to the memory of Ulla, a lovely lady who touched many peoples lives and who died in this tragedy.



The Birmingham 2022 Queen's Baton Relay is confirmed to visit Devizes during its final journey through England this summer, as the full route is revealed.

Birmingham 2022 is hosting the 16th official Queen's Baton Relay – a journey which brings together and celebrates communities across the Commonwealth during the build up to the Games.

The Queen's Baton Relay is set to travel the length and breadth of England for a total of 29 days, before culminating at the Opening Ceremony for Birmingham 2022 on July 28.

Kicking off on Thursday, June 2, the Baton will spend four days in London, coinciding with the Queen's Platinum Jubilee Weekend. The Baton will then resume the international journey and return to England on Monday, July 4 to commence a 25-day tour of the regions.

On Tuesday, July 5, the baton will reach Devizes. During its time in Devizes, the Queen's Baton Relay will begin the first leg of the day, starting in the market square and taking a route through the town towards the canal where it will travel by canal boat down to the Caen Hill Locks at Rowde.

Members of the public are encouraged to get involved with the celebrations.

One of the confirmed community Batonbearers in Devizes is Thelma Edwards, who was nominated for her many years of voluntary work with the Canal and River Trust.



## FARMER'S PLEA AFTER CALVES PUT IN DANGER BY DRUG-TAKERS



Gretchen Winter, of Netherstreet Farm, has been plagued by a series of unexplained and dangerous episodes caused by people walking on land at Roundway, where her herd of Galloway cattle are currently grazing.

The incidents include people leaving nitrous oxide "laughing gas" canisters in the grass – which could be swallowed by curious calves – and people removing signs warning that there is a bull in the field.

Mrs Winter, who also runs the popular Farm Cookery School, has taken to Facebook to appeal to the public for help and has also contacted the Wiltshire Police rural crime team in a bid to keep her cattle safe.

She posted: "We don't know why, but this is what is happening on Roundway, where our herd of Galloways are currently grazing.

"The fence electrics are being turned off, this is dangerous for the herd and for the public.

"The gate between the two fields has been closed and bolted meaning that the cows had no access to water overnight, which is animal cruelty.

"We cannot understand the reasoning behind it. So many things happen including locks being glued, fences cut and signs being ripped down, but this feels more personal and hateful.

"We just don't understand why people are doing this, what have they got to gain? We want to protect people and our herd, please help and contact us if you have any information."

Mrs Winter said that although the situation has calmed in recent days, she is still concerned.

She added: "We've had people cutting wires in the fencing because it's easier for them to get through, rather than walking round, and one woman has told me that it's 'disgusting' that I have cows in a field because she wants to walk there.

"We've also had people leaving nitrous oxide canisters behind them and that could be dangerous for the calves, who are curious about things like that and could easily swallow them.

Anyone with any information about the incidents is asked to contact the Wiltshire Police Rural Crime Team at [ruralcrimeteam@wiltshire.police.uk](mailto:ruralcrimeteam@wiltshire.police.uk) or call the police by dialling 101.

## LOCAL LANDMARK IS IN TOP TEN WILTSHIRE WALKS



Roundway Down was the scene of a battle during the English Civil War and is only a short distance from Rowde where it can be clearly viewed and is a well known local landmark.

Forming part of the North Wessex Downs Area of Outstanding Natural Beauty you will enjoy sweeping views across the Wiltshire countryside from here and to extend your walk you can continue along the Wessex Ridgeway towards Morgan's Hill where you can pick up the Wansdyke Path.

## PCC PHILIP WILKINSON COLUMN



Increasing and improving the number ways my office, and Wiltshire Police, engage with communities is just one way to ensure Wiltshire has a police force which meets the needs of the people it serves.

We have to engage more with local communities and involve them in decision making, we simply have to excel at the basics. Slowly, this will have an impact and we will see an increase in our communities' trust that they are being heard and listened to.

Wiltshire Police is already making strides towards greater community engagement. We need to tell people who their local officers are as well as hearing when there has been great service or when there hasn't.



Making Wiltshire Safer has gone some way to bridge the gap between the police and the communities they serve. I believe it's not just about listening to those who shout the loudest, but also taking the time to meaningfully engage with those who feel they have limited influence.

This is where the Youth Commission plays such a crucial role, young people aged 14-25, are empowered to act as a critical friend to me and Wiltshire Police.

When it comes to young people we do find that, even with the best intentions, services and initiatives are provided for them, instead of with them and we risk alienating the very people we want to help.

We are now in the process of recruiting new members for the Youth Commission and I urge you to consider encouraging young people to apply.

I recognise there may be some sceptics who think this is lip service and won't result in tangible action or change. But that is not, and will never be, my leadership style.

My core responsibility is to represent Wiltshire and Swindon's residents when it comes to police and crime matters. This is not a responsibility that I take lightly or will shy away from.

## ROWDE ARTIST PUBLISHED!



Rowde artist Alan Watters recently received an advance copy of the July issue of the UK's number one art magazine 'Artists and Illustrators' and was delighted to find that an article about one of his recent drawings was featured in it. The article was titled 'A pencil artist whose work went viral'.

The magazine contacted Alan after his coloured pencil drawing of a highland cow went viral on the internet. Alan had wanted to draw a highland cow for a long time and the Covid lockdown gave him the time and opportunity to produce the drawing as a break from doing pet portraits. When

interviewed Alan said "I must say, I was quite pleased with the result but I wasn't prepared for what happened next. It was late in the evening when I completed it but I took a quick photo on my iPhone and posted it just before going to sleep. The next morning the 'likes' were going up at an alarming rate. I thought at first that there must be a glitch but by the following day the 'likes' were rapidly approaching 50,000!"

And quoting from the article; Alan's experience demonstrates the positive impact of social media for an artist, but a striking image is required first, and with that adorable floppy-fringed face poking it's head into view, it's no wonder 'Highland Cow' charmed the internet.

Since producing the drawing, the original has been awarded best in show at the Lawrence Art Society's annual exhibition in Devizes and limited edition prints have been in big demand world-wide from Alan's website <https://alansfineart.com>

## JUBILEE DRAWING COMPETITION



Winners! Ellie Wilks (year 6) and Indie Kaye (year 2)

Children at Rowde Primary Academy were tasked to draw a design for the Rowde Village news front and back cover. We shared information about the Jubilee and what it signifies, as well as discussing the different symbols and images that are associated with the Queen. All of the children did a brilliant job (there were many corgis!) and it was hard to choose. The runner-up posters will be used as decoration at the Rowde Village Jubilee picnic.

**See Ellie's wonderful winning entry on the front cover and Indie's equally brilliant drawing on the back cover!**

## FURLONG CLOSE UPDATE



I have been writing for several months now to say that the families are 'finalising our plans' for Furlong Close to be refurbished, so that it can remain a settled and secure home for its long-term residents and an asset for the future care of adults with learning disabilities in Wiltshire.

Well I am delighted to now be able to tell you that the stage has been reached where in-principle agreement has been reached on the critical terms for this to occur and these are being documented for final agreement. While this is being done, we are also waiting for the approval of the Care Quality Commission to be given for changes to be made at Furlong Close to modernise the facilities and the care provided there.

There is, as they say, 'many a slip twixt cup and lip' and the families are taking care not to tempt fate through being prematurely confident, but we are increasingly optimistic that everything is falling into place for our plans to come to fruition, so that the long-term future of Furlong Close should soon be assured.

That we have come this far is a tribute to the overwhelmingly generous support of the people of Rowde for the residents and their families in their campaign to Save Furlong Close. Without that support the families would not have been able to stop the closure in its tracks in late 2020 and gain the time to put in place our plans to spare our vulnerable relatives from the trauma of being separated from their friends and forced to relocate to new and strange places.

Our heartfelt thanks to the people of Rowde for all that they have done to support us over the last 18 months.

*Yours sincerely,*

**Mark Steele**

**Families and Friends of Furlong Close**

## ANNUAL VILLAGE MEETING

The Annual Village Meeting was held on Wednesday 11th May 2022, 7.00pm, Rowde Village Hall.

The meeting welcomed Miss Alice Simpson, the new Acting Headteacher for Rowde Primary Academy School, and also Mr Anthony Dixon, Senior Project Manager for development at Silverwood School. Reports were also given by Cllr Laura Mayes, on behalf of Wiltshire Council & Cllr Philip Brown, on behalf of the Parish Council.

### Rowde Primary Academy School

It was reported that the school is doing really well. There are challenges, however, with the amount of children who are attending the school, which affects the amount of funding that the school receives.

There are concerns around the ongoing maintenance, upkeep, and suitability of the school's swimming pool. It is not suitable for use by Key Stage 2 students due to its shallowness.

Miss Simpson said that permission had been obtained to install a MUGA on the school grounds. It is anticipated that the work will be carried out in September this year.

Rowde Primary Academy School and the Parish Council look forward to working closely together.

### Silverwood School

Mr Anthony Dixon, Senior Project Manager, attended the meeting and presented a report on 'Silverwood School Build Project Transport and Access Report for Rowde Parish Council.'

Concern had been raised by some Parish Councillors about not having a permanent second access to the site. A Dixon explained that the transport access to the school has been carefully considered and vehicles should not be queuing on the A342 to access the site. There will be a planned waiting space for vehicles on the school site.

A Dixon explained that the Council has carried out a lot of work with their Highways colleagues since the conception of the project in 2018/2019. The Council officers are satisfied that a single-entry approach will be suitable. The driveway will be widened by 2.5 metres. Work will be carried out at the bus stop and to the pavements in install raised kerbs.

Currently there are 30 designated car parking spaces on site: 20 in a car park and 10 in front of the main building. The new car park will have 209 parking spaces.

Wiltshire Council has designed a car park



which will accommodate 70 minibuses on the school site. The area in front of main entrance will accommodate 16 minibuses to drop off. This will be a holding area where pupils will dismount and be met by their member of staff. It is estimated that it will take 10 minutes to dismount 300 pupils.

Currently most of the pupils are transported by taxi. There is only one minibus being used at the moment. The model being proposed will accommodate 40 minibuses, each carrying 6 pupils each.

The Council will promote travel car share amongst staff. If the Council uses a minibus model, they are confident that the traffic will be managed successfully.

The speed limit outside of the school will be reviewed. Wiltshire Council are appointing a traffic consultant and will put in an application to extend the 30mph throughout the whole village.

### **Parish Council – Philip Brown.**

The following was noted:

- There has been a full Council for most of the year, with a small gap for a while.
- The fencing in the Tower View Play area has been replaced.
- Small maintenance jobs have been carried out: the toddlers' picnic area has been revamped; work has been carried out at the skate park; trees been taken down.
- The Parish Council has created a new website.
- The Parish Council is still working with Devizes and Bishops Cannings on a new Neighbourhood Plan
- Future events: the Jubilee celebration is coming up soon.
- A footpath maintenance team has been formed, headed by D Pullen.
- The Parish Council will take ownership of the Silverlands Play Area soon.
- The Parish Council are still planning to build a footpath at Tanis.
- The Parish Council will invest in a Speed Indicator Device.
- There are plans for the Youth Club to restart.

### **Wiltshire Council**

Cllr Laura Mayes – please also see p..... for further Wiltshire Council updates

Cllr Mayes thanked the Parish Council and the village for being so supportive this year, a year after her election.

Some of the issues that Cllr Mayes has worked on for Rowde include:

- overhanging trees, smoke issues, junction improvements.

The main issues have involved Silverwood School and Furlong Close.

### **Furlong Close**

Cllr Mayes has regularly updated the Parish Council on developments at Furlong Close. Wiltshire Council and Cllr Mayes have worked closely with the Friends and Families of Furlong Close group.

The Friends' and Families Group have found a care provider and partner who will run Furlong Close. There will be a key change to the model of care provided.

The future looks bright for Furlong Close and its residents.

### **Reed Place**

The building at Reed Place has been delayed. It may not commence until the new year. Wiltshire Council have advised that people wishing to live in one of the new properties on Reed Place should register with Homes4Wiltshire and make their connection to Wiltshire clear and their need to be a priority.

### **CATG**

The Community Area Transport Group has now been reconfigured to become the Local Highways and Footpath improvement group (LHFIG).

The group's budget has been doubled and it will be able to cover a wider range of issues. It will be possible to apply for help to improve existing infrastructure as well as for new projects. Residual funds will roll over and form part of substantial funding.

### **Ukraine**

2800 Wiltshire households have offered homes to Ukrainian people. This is one of the highest rates in the country.

375 households have been matched with just over 1000 refugees including 102 children.

Only 221 refugees have arrived so far. Matching families and visa applications has taken some time to ensure that all of the necessary checks have been carried out with the host families.

Devizes Town Council has reformed the Covid support group to become the 'Love Ukraine Devizes' group.

If people are not able to offer housing, they could offer something else for example help

with language skills, or making a Sunday dinner for a refugee family.

Richard Clewer, Leader of Wiltshire Council has been on ITN news recently to discuss the disused military houses in the county.

The Council will prepare a backup list of pre-approved families in case the original placement breaks down to avoid homelessness.

**Presentation of Accounts for 2021-22**

The accounts were presented to the meeting. The Clerk provided a financial analysis on variances in income and expenditure between this financial year and the previous financial year.

**Public questions**

It was asked what the Parish Council is doing to stop speeding through the village. P Brown noted that people who are speeding in the village are being stopped by police.

**OBITUARIES**

**Jocelyn (Josie) FROST**

Josie sadly passed away on 15th of March 2022. She will be missed by all of her family and friends. The funeral service took place at St Mathews Church, Rowde on Monday 11th April. Any donations in Josie's memory will go towards Rowde Village Hall. A P McDonald Funeral Services.

**FEATURE - From Dementia Action Week 16th - 22nd May**

**IS IT GETTING OLDER, OR DEMENTIA?**

People often start to forget things more as they get older. Most often this is a normal sign of ageing. But for someone with dementia, changes will be different, more serious and will affect their life more.



**What are the normal signs of ageing?**

As people get older, they are likely to notice some changes in their mental abilities. These could include:

- becoming a little more forgetful
- taking a bit longer to remember things
- getting distracted more easily
- finding it harder to do several things at once.

This may become noticeable particularly from middle age – usually meaning our 40s, 50s and early 60s.

Though these changes can be frustrating, they are a natural part of ageing. Many people worry that these are early signs of dementia. For most people, this is not the case.

**How is dementia different from normal ageing?**

Dementia is a group of symptoms. It's caused by different diseases that damage the brain.

The symptoms of dementia get worse over time and include:

- memory loss
- confusion and needing help with daily tasks
- problems with language and understanding
- changes in behaviour.

When a person has dementia, this worsening in mental abilities is much more serious than the normal changes that people experience as they get older.

The changes may be small to start with, but become more noticeable. For a health professional to diagnose dementia, a person's symptoms must be significantly affecting their daily life. This means having difficulties with completing daily tasks about the house, in the community or at work.



**Next steps**

The thought of being told you have dementia is frightening. It can be difficult to talk to other people about your symptoms and how you're feeling. But doing this will help to get answers and any support you need.

If you're worried about any changes you've noticed in yourself or in someone else, you could:

- speak to your GP, or encourage the person to talk to their GP
- find out more about what dementia is and how people get diagnosed
- call our Dementia Connect support line on 0333 150 3456 for advice and support
- connect to others within our online community, Talking Point.

Although getting older is the biggest risk factor for dementia, evidence shows there are things you can do to help reduce your own risk. These include keeping active, eating healthily and exercising your mind.

For tips on how to reduce your risk of Alzheimer's and other dementias have a look at the Alzheimer's Society website <https://www.alzheimers.org.uk/>



## The footpath team are ready!!



We have bought the tools, read the maps and know some of the areas that need attention.

Our footpath team are ready to go out into the wilderness.

Thank you to those people who have volunteered to join the team already – we will be in touch with you again very soon!

We could do with a few more pairs of hands though.

Are you keen to work outside? Would you like to help to fix our bridges, re-instate our stiles and cut back hedges to make the footpaths accessible and safe for everyone to use?

Please contact the Parish Clerk for details on how to become involved

at [rowdeparishcouncil@gmail.com](mailto:rowdeparishcouncil@gmail.com), tel: 01380 501919

*Thank you to the Wiltshire and Swindon Ramblers for the photograph and support, advice and encouragement.*

**Wiltshire Buildings Record, a charity that has a growing and very detailed database of the county's vernacular buildings – and which is based at Chippenham's History Centre – is seeking new members.**

**For further details please go to**

**[www.wiltshirebuildingsrecord.org.uk/membership/](http://www.wiltshirebuildingsrecord.org.uk/membership/)**

**Organisations such as local history groups are charged £25 per annum, whilst individuals pay £14.**

**Please help us identify and study historic buildings throughout the county.**



# **LAURA MAYES**

## **YOUR WILTSHIRE COUNCILLOR FOR ROWDE**



**Please contact me if you have any Council issues including:**

**Planning**

**Housing**

**Education**

**Highways – potholes, road schemes, speeding**

**Fly tipping and waste**

**Adult Social Care**

**I am here to offer advice and support so please get in touch:**

**Email: [Laura.Mayes@wiltshire.gov.uk](mailto:Laura.Mayes@wiltshire.gov.uk) Tel: 07855 819343**

**Facebook: Laura Mayes – for Bromham, Rowde and Roundway**

### **ANNUAL REPORT**

I recently joined the Rowde Annual Parish Meeting where it was good to hear the annual updates from the many local groups which help to ensure our community is such a wonderful place to live. The community's response to the Ukrainian situation has been incredible and I know all arrivals will be given a warm welcome from Rowde residents.

Wiltshire Council set a 2022/23 budget and 10-year Business Plan to focus on the future, while maintaining a long-term strong financial footing. The Council's budget for the next financial year is just over £417m and with more than half (£235m) on support and social care for adults and children. Around £92m will be spent on day-to-day services such as waste management, road maintenance, leisure and library services, as well as the council's carbon management and climate change work - which recently saw the council ranked as the fifth best unitary authority in the UK for its response to the global challenge.

Alongside this, the council's capital programme is £307m for projects to improve and maintain the county's infrastructure - including leisure services, council house building, schools maintenance, footpath and highway improvements and high streets in Salisbury and Trowbridge.

The 10-year Business Plan outlines the council's guiding themes, which are prevention and early intervention; improving social mobility and tackling inequalities; understanding communities; and working together.

I am pleased to report that Furlong Close's future is looking increasingly safe, and I want to thank the Friends and Family for their tireless work on this project.

Locally I am very aware that traffic and road safety issues are critical in the village, and I am working with the Parish Council to secure further improvements, including a Speed Indicator Device (SID) to regulate speed on the High Street.

Finally, I would like to thank the Parish Councillors for all their hard work and commitment, and especially the Parish Clerk who does a fantastic job in ensuring that everyone stays on track and manages to spin a significant number of plates!

Thank you for your support over the past year. It has been a pleasure to represent you at Wiltshire Council and to play a small part in your wonderful village.

**Laura Mayes**

**Wiltshire Councillor for Bromham, Rowde and Roundway**

**[Laura.Mayes@wiltshire.gov.uk](mailto:Laura.Mayes@wiltshire.gov.uk)**

**07855 819 343**





## FARM FRESH LOCAL PRODUCE

**We only source the best local products from our own farm and local producers, all bursting with flavour and reasonably priced**

Poulshot Lodge Farm, Poulshot, Devizes, SN10 1RQ

Tel- 01380 827202

Open Tuesday – Friday 10am-5pm, Saturday 9am-4pm

For more information, to follow our blog or subscribe to our newsletter visit

[www.poulshotlodgefarm.co.uk](http://www.poulshotlodgefarm.co.uk)

find us on Facebook & Instagram as well



@poulshotlodgefarm

## St Matthew's Flower Arrangers

We are a friendly group of people who enjoy flower arranging. It is fun, not onerous and an opportunity to keep our Church looking as it should – in particular at the time of special festivals.

As with any village some of our members move on to live elsewhere and new families move in. There have been quite a few changes during the two years of the pandemic.

We would welcome new members and, if you might want to consider joining us, please contact: Liz Ibbetson on 01380 720630 or

wb.ibbetson1@btinternet.com

## Martina's Professional Cleaning Services

Is cleaning and ironing taking up your valuable time?

We guarantee the best price for the perfect job

Regular Cleaning

Spring Cleaning

Office Cleaning

Oven Cleaning

Window Cleaning

Carpet Cleaning

Ironing

Fully insured and absolute privacy assured

The same regular cleaner guaranteed

Call Martina on 07859818198

## Seasoned Logs and Kindling Available



*Don't Shiver, We Deliver*

Call James on

07970 781828

## JOHN STUART FUNERAL SERVICE LIMITED

18 The Britox

Devizes

Wiltshire SN10 1AJ

Tel: 01380 729459



Funerals Arranged

24 Hour Service

Private Chapel of Rest

## ROWDE VILLAGE

Have you visited the village website yet? You will find it at [www.rowdevillage.org](http://www.rowdevillage.org)  
(Amongst many other things, you can see your Rowde Village News in glorious full colour!)

Please note that our Rowde Village website manager is Rebekah Jeffries and she can be contacted at rowdeparishcouncil@gmail.com or 01380 720988.



# Trevor Hale

NPTC Certified (arb) Fully Insured

City &  
Guilds  
NPTC



## Tree Surgery

Felling ▪ Reductions ▪ Dismantles  
Chipping ▪ Stumpremoval ▪ Hedging

Very Competitive Pricing

07737 934777

[www.wiltshiretreesurgery.co.uk](http://www.wiltshiretreesurgery.co.uk)

Seend Cleeve

*arts*  
together ...ageing creatively

Is an award-winning local charity, seeking to reduce loneliness and isolation and in doing so improve health and well being for vulnerable elderly people through participation in the arts. We run weekly sessions in Pewsey, Marlborough and Devizes and are looking for friends and supporters to join us in fundraising, raise local awareness and help at our sessions.

### COULD YOU PLEDGE SOME TIME AND HELP BY?

- **Businesses:** Adopting us as your 'Charity or Choice' or supporting us in other ways?
- **Individuals:** Help spread the word in your community, join our 'friends' scheme, run a fundraiser for us, help promote our work?
- **Groups:** We have plenty of ideas and resources to support groups involvement

For more info about our activities or being involved

[liz.lavender@artstogether.co.uk](mailto:liz.lavender@artstogether.co.uk) / 07780860922

[www.artstogether.co.uk](http://www.artstogether.co.uk) Registered Charity 1109432

## HAIR AT HOME ROWDE

Hairdressing salon style in  
Rowde or mobile, you choose!

Contact Louise Allan on 07811 948374  
or Email [louiseallan\\_1@hotmail.co.uk](mailto:louiseallan_1@hotmail.co.uk)

Very experienced ex salon stylist

Cutting, families, colouring, perming,  
children welcome



HAIR AT HOME  
Experience a little hair magic

## Rowde Village News Pledge

The Rowde village News is independent of political parties, private interests and government. Our policy is to provide readers with a complete, fair, accurate and balanced news and information service.

Although we are a voluntary run, nonprofit making publication we still do our best to adhere to the Press Complaints Commission's Code of Practice. While we try hard to avoid mistakes, some errors can occur during the part time and hectic process of producing one of Wiltshire's largest and most regarded village magazines (apparently, from feedback received over recent years).

Our policy is to correct errors of fact as soon as possible and, where appropriate, apologise. If you find an error of concern, please contact the editor (contact details on page 3).

Thank you for your continued support and understanding.

*Alan Watters, Editor*

# Wiltshire Mind



Your Local Mental Health Charity

Depressed? Anxious? Stuck? Grieving?  
Stressed? Not Managing?

## **COUNSELLING SERVICE**

A safe, confidential and personal place to talk, and help you to move forward

A low cost counselling service in the community for all

**Initial Assessment Free of Charge**

For further information please contact:

Wiltshire Mind  
24a High Street  
Melksham  
SN12 6LA

Email: [counselling@wiltshiremind.co.uk](mailto:counselling@wiltshiremind.co.uk)

Phone 01225 706532

Reg Charity Number: 1113751 Reg Company Number: 5498430

## Are you age 60+?

Come and join our friendly exercise class and help maintain/improve your mobility  
(Exercises may be done seated or standing)

**Mondays**

2.30pm – 3.30pm

followed by coffee/tea and a chat at Rowde Village Hall

**Cost : £3.00**

For more information contact:

Yvonne 01380 723086

[yve@thegablesdevizes.co.uk](mailto:yve@thegablesdevizes.co.uk)

ACTIVE PLUS



lendology.cic

Wiltshire Council  
*Where everybody matters*

*Lending with Heart and Mind*

**Wiltshire Council fund a not-for-profit loan scheme for homeowners.\***

If you have lived in your home for over 5 years and:

- Are over 60; or
- Are in receipt of State Benefits; or
- Have children under 16 living with you.

You may be eligible for a home improvement loan to keep your home warm, safe, and suitable for your needs.

Lendology CIC work in partnership with Wiltshire Council to deliver the council subsidised loan scheme. Our knowledgeable team of advisers will guide you through the process of applying.

To book a no-obligation assessment, or for more information, visit [www.lendology.org.uk](http://www.lendology.org.uk) or call 01823 461099.

Heatherton Park Studios, Bradford on Tone, Taunton, TA4 1EU

\*subject to eligibility

# Easterton Vehicles Ltd.

ATA Automotive Technician Accreditation  
Master Technician AT 1803087958

**Independent  
BMW, Mercedes, VW, Audi  
and Skoda Specialists  
at less than 1/2 dealer prices.  
All Makes Mot's & Servicing.**

Award Winning Knowledge Of Modern Motor Vehicles  
Champion Bright Spark 2006 - 2nd  
Auto Trade Technician 1999 - Winner

**John Kyte, Director**

Unit 1 Hillcroft Farm, 5 Easterton Sands, Devizes  
Wiltshire, SN10 4PY

Call: 01380 812192 or 01380 816436

[www.eastertonvehicles.com](http://www.eastertonvehicles.com)



# Beautiful Handmade Curtains, Blinds and Soft Furnishings

Free measuring and quotations  
Hundreds of pattern books to browse



Caroline Flack 07982 985 925  
caroline@flackformations.co.uk

## Adams Renovations Property Services



[www.adamsrenovations.co.uk](http://www.adamsrenovations.co.uk)

For All Your Property Requirements:

Painting, Decorating (interior & exterior)  
Tiling & Flooring  
Paving, Decking & Patios  
Guttering & Facias  
Light Building Works  
Repair & Renovation Work  
Bathroom Specialists

Competitive prices from an honest & reliable worker.  
No job too small. All areas of Wiltshire covered.  
Fully insured. References available.

Email: [info@adamsrenovations.co.uk](mailto:info@adamsrenovations.co.uk)  
Telephone: 01380 500549  
Mobile: 07725 638165



Butchery (Locally Reared & Free Range)  
Locally Sourced Fruit & Vegetables  
Fresh Fish  
Dairy (we have a Fresh Milk Vending Machine)  
Deli  
Bakery  
Cakery  
Dried Goods  
Handmade Chocolates  
Children's Toys & Clothing  
Natural Pampering  
Cards & Stationery  
and lots, lots more



Lower Farm is also home to the Rowdey Cow Cafe  
& Ice Cream Parlour

[www.spottedogfarmshop.co.uk](http://www.spottedogfarmshop.co.uk)



Use our app for  
home deliveries or  
click & collect



*Proud of the people we work with*

# The G&D Summer Events

## Sunshine Early Birds.....

Monday to Thursday Evenings 6pm - 7pm

Smoked mackerel Caesar salad £10

Char-grilled rib-eye steak with chips £17.50

Beer battered fish N chips, mushy peas & tartare £10

G&D homemade fishcakes & chips £10

## G&D Coffee Morning Wed 22th June (10.30am to Midday)

Come and join the lovely Sydnie (our wonderful Assistant Mgr) as she hosts this months coffee morning with cake & a friendly chat here at The G&D. If sunny weather we can sit in the pretty English garden.

## Queens Jubilee Weekend Quiz & BBQ

Thursday 2nd June

Quiz at 3pm: teams of 4 people £10pp entry includes Nachos.

Followed by BBQ at 6pm: Garlic bread, burgers, sausages, prawns, tuna steaks & loads of salads... surprise pudding

BBQ Adults £20/ Kids £7.50 (Quiz & BBQ £25 save £5)

Please call to register your team and BBQ tickets

## The George & Dragon Crib Practice night

We meet each Monday night at the G&D at 6.30pm for a couple games of Crib. If you are a beginner or just fancy learning this traditional & fun pub card game then please join us. We usually take turns in providing a sandwich supper and/or pudding. If you are new to the village its a nice way to meet other Rowde villagers! We don't bite!

## The G&D English garden

Have you popped over to see the pub garden recently? We have a really special place to relax and unwind. Spoil yourself with a delicious Pimms or a cheeky pint, listen to the birds sing & the Church bells chime. Please do come and make use of the Terrace, The Potting Shed and new Pavilion. All are heated and we supply blankets & hot water bottles for those cooler evenings. Potting Shed holds up to 6 people & the Pavilion 10 people for private dining spaces.

*Chippy & The G&D Team 01380 723 053*



WHISTLEY CANINE COUNTRY CLUB



WHISTLEY CANINE COUNTRY CLUB  
AND CATTERY

**Our Modern Luxury Heated Cattery  
For Tiny Tigers is Now Open**

Luxury Holiday Venue For Our  
Canine Friends  
Spacious Suites Under-Floor Heating  
Day Care Facility Inspections Welcome  
Potterne Devizes  
01380 738189/726330  
Please see our website for more details  
[www.whistleykennels.co.uk](http://www.whistleykennels.co.uk)

**ROWDEY COW**

Locally Sourced Food  
Children's Play Area  
Spectacular Views  
Miniature Ponies

Delicious Home Made Ice Cream  
made using our own milk fresh from the farm

**FARM CAFE &  
ICE CREAM PARLOUR**

Open 7 Days a Week

**Taste of the West South West England GOLD 2016**      **Taste of the West South West England GOLD 2015**

**Cooked Breakfasts**  
**Full Lunch and Snack Menu**  
**Children's Menu Available**  
**Ice Cream Available All Day**  
**Home Made Cakes and Cream Teas**  
all our food is freshly made from local produce

Lower Farm, Devizes Road (A342), Rowde, Nr Devizes SN10 2LX  
Tel: 01380 829666 | [www.rowdeycow.co.uk](http://www.rowdeycow.co.uk)

## The Tranquil Moment

HEALTH & BEAUTY CLINIC

Unit 2 Manor House Yard, Poulshot Road, POULSHOT,  
DEVIZES, WILTSHIRE SN10 1RY

**TELEPHONE: 01380 828297**

[www.tranquilmoment.co.uk](http://www.tranquilmoment.co.uk)

email: [tranquilmoment@live.co.uk](mailto:tranquilmoment@live.co.uk)

**Declor facials,  
microdermabrasion, massage,  
sports massage and injury clinic,  
shrinking Violet fat loss body wraps,  
CND shellac and Brisa Lite  
sculpting gel nails, CND manicure  
and pedicure, Apilus electrolysis,  
CACI non surgical face lift,  
Declor and CND stockist**

*Please call Jo at The Tranquil Moment Health and  
Beauty Clinic to make an appointment*

**Call us or follow us on Facebook for up  
to date offers and news**

## VILLAGE DIARY Parish Council Meetings

**(All Wednesdays 7.30pm - venues to be confirmed.  
Please check noticeboards and website for location)**

**8th June, 13th July, NO MEETING IN AUGUST,  
14th September, 12th October, 9th November,  
14th December**

### Other Events

22nd June - Coffee Morning - page 44

1st July - Rowde Colour Run & Sports Day - page 13

1st, 2nd & 4th weekends in July - Open Studios (page 2)

5th July - Queen's Baton Relay reaches Caen Hill Locks  
(page 31)

Every Tuesday - St Matthew's Cafe - page 19

### Events for the Queen's Platinum Jubilee

Thursday 2nd June - Rowdey Cow - Family Picnics  
and children's activities - Barbecue and Bar -  
George and dragon - Quiz 3.00pm - Barbecue  
4.00pm - Page 44 - Cross Keys - Bingo from  
7.30pm Start 8.00pm

Friday 3rd June - St Matthew's Church - Salads and  
Puds 6.00pm (page 22) - Cross Keys - Party/Disco  
7.30 pm

Saturday 4th June - Small Playing Field - Village Picnic  
12.00 - 3.00pm - Cross Keys - Cocktail Night

Sunday 5th June - Street parties - St Matthews Church  
- Songs of Praise 4.00pm - Cross Keys - Quiz 8p.00m

# LETTERS

## THANK YOU

Dear Editor,

I would like to thank all in Rowde for the lovely flowers, cards and messages of condolence that I received following the sudden death of my dear husband Richard. They have been a great comfort to myself and my family at this sad time.

**Sue Scruse**

## “THE NILE-HIGH CLUB”

Annual Murder Mystery and Hog Roast in aid of Wilton Windmill

On Saturday 18 June Smoke & Mirrors are returning to the Windmill this year for the ninth Murder Mystery and hogroast. The event is a fundraiser for the Windmill, it's always popular, and tickets are on sale now!

This year's plot is “The Nile-High Club”. Set in Ancient Egypt with scant respect for historical accuracy an evening of riotous comedy is guaranteed with appearances by Cleopatra, the Emperor Nero, the trusty eunuch Preposterous, a dodgy high priest, and a sacrificial virgin. Throw in passion, poison and pyramids and a case of mistaken identity – and what could possibly go wrong?

The murder mystery will take place throughout the evening with a mix of prepared scenes and opportunities for you to interrogate the actors about who's been up to what. They'll be in character all evening, mixing with the audience. At the end there will be a formal interrogation, followed by confessions and prize-giving.

We'd love it if you come in costume. It's optional, but it really adds to the atmosphere so dress like an Egyptian, walk like an Egyptian, and join us!

Tickets include an outstanding gourmet hog-roast buffet (with vegetarian option); and there'll be a cash bar available throughout the evening. And of course there will be prizes of champagne and chocolates.

Large groups are most definitely welcome, and we're pleased to offer one free ticket for every group of ten booked.

**WHERE** | Wilton Windmill, Nr Marlborough, SN8 3SW

**WHEN** | Saturday 18 June, 7.00pm

**TICKETS** | £29 (murder mystery & hog roast)

**GROUP RATE** | Buy ten, get one free

**FANCY DRESS OPTION** | Ancient Egypt!

**BOOKING** | Phone: 07769 977779

Email: [info@hauntedmysteryweekend.co.uk](mailto:info@hauntedmysteryweekend.co.uk)

## 50th BIRTHDAY CELEBRATIONS

We have lived in the village for 16 years now and have been so lucky to have the George and Dragon pub on our doorstep for so many meals, celebrations and milestone moments. On Saturday 7th May I was lucky enough to celebrate my 50th Birthday with so many family and friends and where better to celebrate than a private party at the G&D.

We were extremely lucky with the weather so could use the terrace, garden and outdoor seating to its full potential while turning the restaurant into a disco and the sitting room for the buffet. The garden and seating areas looked amazing and many of the guests were sat out till quite late enjoying the drinks, food and atmosphere. Nothing was too much trouble for Chippy and the team and a fabulous night was had by all. The arrival drinks were a huge success and everyone raved about the food, I just wish I had time to eat some!

I would like to thank Chippy, Amy, Shelley and the whole George & Dragon team for going above and beyond and putting on the best party a girl could wish for!

**Julie Baker**

## FRENCH LESSONS!

### BROMHAM & ROWDE TWINNING ASSOCIATION

We are holding conversational French lessons every fortnight. If you are interested in joining us, please contact Janet Giles. 01380 850327 or [janetmgiles10@gmail.com](mailto:janetmgiles10@gmail.com)

*Kind regards,  
Janet Giles.*

A date for your diaries!

The Queen's Jubilee Celebration at the Rowdey Cow  
We are starting our Jubilee Celebrations at 3pm-7pm  
on Thursday 2<sup>nd</sup> June!

We will be having our own Rowdey Cow Family Party  
and invite you to join us! You can bring your own  
picnic or if you prefer you can buy some hot bbq food  
or snacks, drinks at the bar and of course ice cream.  
We will have rounders, football, a bouncy castle and a  
roundabout!





Rowde Community Speed Watch Team



Do you think speeding is a problem in our village?

Can you spare an hour or so a month to help tackle speeding in our community?

To get involved please contact

Tony Jeffries at

wajeffries888@gmail.com or

phone 01380 729989

## ORIGINAL PET and PEOPLE PORTRAITS



Colour or mono portrait of a person or pet by local artist Alan Watters. Original portrait. Limited edition prints and/or personalised greetings cards packages also possible. Original supplied in a quality mount ready for framing.

Call or text Alan on 07886870053 or Email [watters.alan@gmail.com](mailto:watters.alan@gmail.com) for more information or text/email a good photo for a quote.

Website: <https://alansfineart.com/>

### PHILIP HALE

## Clinical Sports & Remedial Massage Therapist

*Promoting a healthy body and mind*

PRE TREATMENT POSTURAL ASSESSMENT

Soft Tissue Massage

SPORTS INJURIES

Training & Muscle Conditioning  
Preparation

TREATMENT & PREVENTION OF: MUSCLE INJURY, BACK PAIN, POOR POSTURE AND EVERYDAY STRESSES & STRAINS

Pre, Inter & Post Event Treatment & Recovery

WILTSHIRE BASED & MOBILE CLINIC

Please call for an appointment

TELEPHONE: 07825180179

EMAIL: [reception@philiphalesportsclinic.co.uk](mailto:reception@philiphalesportsclinic.co.uk)

WEBSITE: [www.philiphalesportsclinic.co.uk](http://www.philiphalesportsclinic.co.uk)

INDUSTRY MEMBERSHIP AT THE LONDON SCHOOL OF SPORTS & REMEDIAL MASSAGE

## FREE CAT NEUTERING



Do you want to neuter your kittens and cats?



You know it's the right thing to do, and.. **we are here to help you!**

### RSPCA Wiltshire Mid Branch

will pay, for a limited period, the cost of neutering and, at the same time, micro-chipping your cats and kittens if you live in **Devizes, Melksham, Westbury or Warminster** or the surrounding villages.

To apply for financial help to have your cats neutered, and, if you wish, micro-chipped at the same time, please send a blank e-mail to [cnwiltson@gmail.com](mailto:cnwiltson@gmail.com) We will reply with a link to the application form. If you prefer you can telephone 07494-240622

**YOU CAN APPLY FROM 25TH FEB. UNTIL 30TH APRIL 2022**



Wiltshire Mid Branch  
Registered charity no. 205925

Working together to help you and your pets



Registered charity no. 203641

## Sudoku (difficult this month)

				2				
		6	7		4			8
	4				9			
	8				7			4
4				1		6		2
	9	1	2				3	
				6		7		
					2			3
	5		1	8			4	

### Last Month's Solution

3	4	1	8	2	7	9	5	6
9	6	7	4	1	5	3	2	8
8	5	2	9	3	6	4	7	1
5	7	3	2	6	1	8	4	9
1	8	9	3	7	4	2	6	5
6	2	4	5	8	9	7	1	3
4	1	8	7	5	3	6	9	2
2	9	5	6	4	8	1	3	7
7	3	6	1	9	2	5	8	4

## Mini Sudoku (medium this month)

Insert the numbers 1 to 6 in the blank boxes so that each of the six separate areas of the puzzle and each line vertically and horizontally contains each number only once.

	6		3		5
4			6		
		6			
				5	
1	3		2		
		2			3

### Last Month's Mini Sudoku Solution

1	6	4	3	2	5
2	3	5	6	1	4
4	2	1	5	6	3
3	5	6	1	4	2
5	1	2	4	3	6
6	4	3	2	5	1

## Quick Reference List of Advertisers

Advertiser	Page
<b>FOOD:</b>	
Local Honey	22
Spotty Dog Farm Shop	43
Farm Fresh Local Produce	39
<b>FUNERAL DIRECTORS ETC:</b>	
Charles S Winchcombe & Son Ltd	7
M J Sly (Memorial Stonemasons)	22
John Stuart Funeral Services	40
D J Bewley Funeral Directors	17
MTM Memorials	23
<b>TECHNICAL/PROFESSIONAL SERVICES:</b>	
Dolman Audio Visual (TV & Hi Fi repairs)	50
Original Pet & People Portraits by local artist	47
Lendology.cic / Wiltshire Council	42
Mander Duffill Chartered Accountants	9
Open Studios 2022	2
Wiltshire Buildings Record	37
<b>HOUSE MAINTENANCE:</b>	
House Cleaning (Martina)	40
Painter & Decorator (Lawrence Plumb)	19
Plasterer (T O'Rourke)	50
Adams Renovations	43
Caroline Flack Soft Furnishings	43
Building Contractors (Gaiger Brothers)	17
KFR (used furniture and white goods)	22
Cee Cee Painting & Decorating	22
Gray & Amor Ltd, Property Renovation	13
APT Building and Electrical Contractors	16
Oliver's Electrical Ltd	23
<b>GARDEN SERVICES:</b>	
Tree Surgery - Trevor Hale	41
Tree Surgery - Tom Ashpole	21
<b>PUBS/RESTAURANTS/CAFES/B&amp;Bs:</b>	
The Rowdey Cow	45
George & Dragon	44
<b>HEALTH AND FITNESS:</b>	
Clinical Sports & Remedial Massage	47
Active Plus for over 60s	42
The Tranquil Moment Health & Beauty	45
Wiltshire Mind	42
The Sycamore Centre	23
Pilates Classes	8
North Wessex Therapies	24
<b>PETS &amp; LIVESTOCK:</b>	
Whistley Canine Country Club	45
Dog walking / Pet care services	50
Free Cat Neutering	47
<b>MISCELLANEOUS:</b>	
Silver Lining Support	22
Wiltshire Bobby Van Trust	17
Nursery - Townsend Barn	21
Canal Boat Rental - Foxhangers	8
Car Sales, MOTs & Servicing	42
4Children	23
Arts Together - Ageing Creatively	41
Hair at Home Rowde	41
Logs and Kindling	40
<i>And please remember to mention where you saw the advert when you contact any of our advertisers! Ed</i>	



# Quick Reference Contacts and Village Guide

Listed below in alphabetical order are the various village organisations with contact names and telephone numbers

## Allotments

### Sally Green

07824832424

or [sallygreenrpc@yahoo.com](mailto:sallygreenrpc@yahoo.com).

## Bell Ringing

Contact Richard Heath

on 01380722379

## Bingo

Mondays 8 pm in Village Hall

## Charities

Rowdeford Charity Trust

[trustees@rowdefordcharity.org.uk](mailto:trustees@rowdefordcharity.org.uk)

[www.rowdefordcharity.org.uk](http://www.rowdefordcharity.org.uk)

## Church Coordinator

Benefice Administrator:

Sarah Bowler 07876142112

## Church Choir

vacant

## Church Wardens

vacant

## Doctor

For list of doctors contact the Health Commission, Pans Lane, Devizes, Tel: 0300 111 5717

## Football

John Dalley, Tel: 727094

## Footpaths

Debra Pullen

[rpc.dpullen@gmail.com](mailto:rpc.dpullen@gmail.com)

## Garage

Slades of Devizes Tel: 727755

## Hospitals

Devizes Community Hospital

Tel: 723511

Chippenham Community Hospital

Tel: 01249 447100

Trowbridge Community Hospital

Tel: 01225 711300

## Ladies Club

Held in Village Hall on last Tuesday in the month at 8 pm.

Mrs Di Buckland, Tel: 723049

## Local Councils

Wiltshire Council

Tel: 0300 4560100

Devizes Town Council 722160

## Neighbourhood Police Team

Jo Newbury Rural Beat Manager

PCSO Georgina Dodd

Ring 101

Google devizes npt to contact the team on

[www.wiltsmessaging.co.uk](http://www.wiltsmessaging.co.uk)>devizes

## Parish Council

Chair - **Philip Brown**

Tel: **07554 311726**

Clerk - Mrs Rebekah Jeffries

Tel: 01380 501919

**PC Repairs** - 07833696328

[ian@pcdoctor-devizes.co.uk](mailto:ian@pcdoctor-devizes.co.uk)

## Playing Fields

For playing field bookings

please contact the Parish

Council Clerk on 01380 501919

[rowdeparishcouncil@gmail.com](mailto:rowdeparishcouncil@gmail.com)

## Police

Devizes Police Tel: 101

## Pubs/Restaurants

Cross Keys, Tel: 078366506000

George & Dragon, Tel: 723053

Rowdey Cow Cafe, Tel: 829666

## Rifle Club

Practice Wednesdays, Matches

Thursdays in Village Hall.

Laurence Plumb, Tel: 728174

## Roads/Pavements

'My Wiltshire App or 03004560100

## Rowde Court Studios

Ann Swan, Tel: 01380 724788

## Rowde Rainbows

Meet: Tuesdays 6.15 to 7.15pm

Contact: Emma Moffat 07780756411

Email: [RowdeRainbows@gmail.com](mailto:RowdeRainbows@gmail.com)

## Rowde Village News

Alan Watters, Tel: 01380 724788 or

07886870053 [watters.alan@gmail.com](mailto:watters.alan@gmail.com)

## Rowde Village Hall

Enquiries - Tel: 07926952631

Bookings - 722497 (after 6 pm)

## Rowde C of E Primary Academy

High Street, Rowde SN10 2ND

Head teacher 723991

## Silverwood School

Head Teacher

Tel: 850309

## Hft Furlong Close (ex Self Unlimited)

Tel: 721309

## St Matthew's Flower Guild

Liz Ibbetson, Tel: 720630

Flowers for all occasions,

Weddings, Funerals &

Anniversaries

## TAXI

R H Reeves 725072

J Dalley 07592 063789

## Toddler Group

Village Hall Thursdays 9.30-11.30

## Tuesday Afternoon Club (60s+)

Held in Village Hall first Tuesday in the month at 2.30 pm.

Mrs D Ellis, Tel: 722655

## Veterinary Surgeries

Estcourt - Tel: 723687

McQueens - Tel: 728505

The Paddock - Tel: 813202

## Website

[www.rowdevillage.org](http://www.rowdevillage.org)

[rowdeparishcouncil@gmail.com](mailto:rowdeparishcouncil@gmail.com)

or contact Rebekah 01380 501919

## Youth Club

Josh Wills

[rpc.joshwills@gmail.com](mailto:rpc.joshwills@gmail.com)

## DOG WALKER / PET CARE SERVICES

Does your dog spend too much time home alone? Do you find it hard to fit in regular daily exercise for your dog amongst the stresses of everyday life? Let me help you! I'm a dog walker with over 10 years' experience working with dogs and other animals. I have worked for guide dogs and have been a supervisor at a busy kennels, as well as years helping at veterinary practises. My passion for animals runs very deep and their care and welfare is of up most importance to me. I am experienced, offering a professional, caring and friendly service to dogs & their owners of all Breeds I am fully insured and first aid trained. I have a Facebook page where you can see reviews and updates of your dogs on their walks. [www.facebook.com/boopeeandfriends/](http://www.facebook.com/boopeeandfriends/) My website is [www.boopee-and-friends.co.uk](http://www.boopee-and-friends.co.uk). Feel free to message me via website or on my Facebook page. Alternatively you can call me on 07368635866.

## Dolman Audio Visual

Berhills Lane Farm, Sells Green, Seend  
**provides**  
**reliable and effective repairs**  
**& maintenance to all makes of**  
**TV, Hi-Fi & video equipment**  
by knowledgeable and friendly technical staff  
at our well-equipped service department

Please contact

**Maggie or Peter**

**Phone/Fax: 01380 828524**

**Email: [peterdolman@btconnect.com](mailto:peterdolman@btconnect.com)**

## T O'ROURKE

All plastering work undertaken

No job too small

**FREE ESTIMATES**



Contact Troy on:

01380 698993

or 07968 634689

## FREE CLASSIFIED ADS

### FOR SALE

8x100 gm. balls of Deramores Studio acrylic double knit yarn, shade Butterscotch, all the same dye lot and in original packaging (shop price £2.10 a ball)  
£10 01380 721422

Drum Kit for sale. 5-piece drum kit drum by Gear4music, blue. Suitable for beginners and experienced drummers. Comes with a stool, 5B drumsticks, drumheads, and a drum key. Cymbals included are 14" hi-hats, one 16" crash, and an 18" crash/ride. Excellent condition, some minor marking on cymbals. Price £160, offers considered. For more information, please contact Patricia on 07884962079.

### LARGE COMPOST BIN

Free to collector in Rowde

Contact Pat on 01380 723436

### CLOSING DOWN SALE

This year I have decided to close down my eBay fine art shop (I'm getting too old) so I have greatly reduced the starting prices of all my listings. Grab a bargain plus save on postage too by going to <https://www.ebay.co.uk/str/alansfineart> to view online or email me [watters.alan@gmail.com](mailto:watters.alan@gmail.com) to discuss anything you are interested in.

**STOP PRESS - FOR A LIMITED PERIOD ALL PROCEEDS FROM SALES ON MY EBAY SHOP WILL GO TOWARDS UKRAINE RELIEF FUNDRAISING**

### How to advertise here for FREE:

If you live locally and have an item to sell then just contact Julie on [juliebaker72@yahoo.co.uk](mailto:juliebaker72@yahoo.co.uk) or telephone 07796690413, giving a brief description of the item, the amount you would like for it, and a contact telephone number (name optional). 'Wanted' ads also accepted. **Note - private advertisers only** Please also let us know whether your item sells or not so that we can either remove it or keep it in for subsequent months

**PLEASE REMEMBER**  
**to mention where you**  
**saw the advert when**  
**you contact any of**  
**our advertisers!**



# Rowde Arts and Crafts

*This page has been created to promote arts and crafts in the village. We hope to feature more artists in future issues. If you live in the parish of Rowde and you would like to be featured here please email your details and an image or two to [watters.alan@gmail.com](mailto:watters.alan@gmail.com)*

## KAREN LAWRENCE BRIGHT

Having recently returned to her native Wiltshire, Karen approaches familiar landscapes with a fresh perspective after many years of oil and watercolour painting in Portugal. She trained at the Universidade de Artes in Lisbon and still enjoys finding work there, including commissions for wine labels. Karen participated in Marlborough Open Studios last year and was very pleased to welcome local visitors to see her paintings and workspace.



*Image: Winter sky over Caen Hill Locks*

07711 290358 [instagram.com/karenlawrencebright](https://www.instagram.com/karenlawrencebright)

## JO EMPSON

Jo is an author/illustrator of Picture Books for young children 2 to 6 years. Her illustrations are inspired by her love of nature and her abiding wish is to create beautiful books with depth and meaning. She has six published books, her first book 'Rabbityness' was shortlisted for the Waterstones Children's Book Prize. Jo has just published a new book (in time for Father's Day) called 'Tiny Blue, I Love You' published by Hodder. Jo's books are available to buy with a dedication, and also limited edition prints of her illustrations. For further details visit [www.joempson.com](http://www.joempson.com) or email [joempson@yahoo.co.uk](mailto:joempson@yahoo.co.uk).

