

Rowde Village News

A scenic view of a grassy field with a wooden fence in the foreground, a large tree on the right, and rolling hills in the background under a clear blue sky.

December 2023 / January 2024

ROWDEY COW

CHRISTMAS

Party Nights!

GLASS OF BUCKS FIZZ OR ORANGE JUICE ON ARRIVAL.



£15 + VAT PER PERSON

GROUPS OF 8 OR MORE CAN BOOK A TABLE AT
OUR CHRISTMAS PARTY NIGHTS ON 9TH
DECEMBER & 22ND DECEMBER

Festive Buffet will be Served on Each Table

- *Mini Yorkshire Puddings with Beef & Horseradish Sauce*
- *Pigs in Blankets with a Mustard Mayo Dip*
- *Assorted Sandwiches / wraps*
- *Filo parcels*
- *Roasted Vegetable Quiche*
- *Vegetable Spring Rolls with a Sweet & Sour Dip*
- *Mixed salads - Potato salad - Coleslaw*
- *Christmas Tree Cheese Board*
- *A Selection of Sweet Plates & Mince Pies*

(Dietary requirements catered for)

FOR GROUPS OF 20 OR MORE - PRIVATE
PARTY NIGHT OPTION AVAILABLE ON
ADDITIONAL DATES £15 +VAT



Book Now!

Editorial

Welcome to this bumper edition of the Rowde Village News.

There are all the usual excellent reports and articles from the village's schools, clubs, societies and other organisations of course but there are also many additional interesting items covered in this issue.

Good to see that the Community Speed Watch is back up and running, read about it on pages 25 and 26, and also great to hear that last year's very successful Rowde Windows Advent Calendar is also going to be a feature in the village over the festive period this year. Read about it on page 29.

Following the highly successful Summer Fete at Furlong Close they will be hosting a Christmas Market on 2nd December. Please read about it on page 28 and also see their poster on the back page. Do go along and give them your support.

And speaking of Furlong Close, the plans for developing the currently unused buildings are progressing at a pace and the organisers at The Mind Tree Café hope to have some areas up and running in January 2024. Read about their plans on page 26.

A couple of issues or so back I started a column telling of the new or rediscovered cafés I have visited around the area and on page 20 you can read about my latest gem of a find which is within walking distance (on a good day) of the village!

Finally, can I ask that anyone who has an entry in the Quick Reference Contacts and Village Guide on page 45, please check their details and keep me updated of any changes, additions or omissions (my Crystal ball isn't working lol).

Mind how you go, Ed

This magazine is brought to you thanks to Jam Print Design & Printing and all the advertisers

Notice to contributors & advertisers

This magazine is generally printed in black and white in hard copy and delivered free to every home in the parish but additionally it is hosted on the **Village website** in full colour. If anyone does not wish any particular details (photographs, names, contact details, etc) to appear on the World Wide Web then they are advised not include them in their submissions, thank you.

Contributors please also note:

The deadline for articles and any changes to advertisements is the 15th of every second month.

Inserts: Due to the extra work created by inserting leaflets into the magazine and the fact that the team is already stretched, we very much regret we are unable to accept requests of this nature except in very special circumstances, when there will be a small charge.

Views expressed in this magazine are those of its contributors. They do not necessarily represent the views of the magazine's editorial team.

Contents

December 2023 / January 2024

Rowde all about it (pages 4 & 5) *News and views from village clubs and organisations*

Rowde Book Club (page 6)

Rowdey Cow News (page 7)

Rowde Primary Academy (pages 10 & 11)

Silverwood School (page 12)

Rowde Parish Council (pages 14 to 16)

The St Matthew's Pages (pages 18 & 19)

inc. Church Rotas and details of Services and Events

Eating out & about (page 20)

Fun Column & Fun Pics (page 21)

The Buzz about Bees (page 23)

Local News (pages 24 to 29)

Festive Facts (page 30)

Photo Memories ...and did you know? (page 31)

Your PCC (page 33)

Looking Back - 12 years ago (page 34)

Village Diary (page 41)

Letters (page 42)

Sudoku (page 44)

Quick Reference List of Advertisers (page 44)

Quick Reference Contacts and Village Guide (page 45)

The Magazine Team

Alan Watters (Editor)

Tel: 01380 724788

Email: watters.alan@gmail.com

Suzan Jackett (Assistant Editor)

Tel: 01380 729791

Email: suzijj@rocketmail.com

Julie Baker (Advertising Manager)

Tel: 07796690413

Email: juliebaker72@yahoo.co.uk

Sue Scrusse (Distribution Manager)

Tel: 01380 729488

Email: scrusefamily@aol.com

Front Cover Image

The photograph was taken by the editor looking toward Roundway Hill and shows one of the public entrances to the Diamond Jubilee woodland. These woods were open fields just over ten years ago but thanks to the voluntary help of a great number of local residents, many thousands of trees were planted and provide us with a wonderful area to walk in today.

ROWDE LADIES CLUB

On October 10th members met in the Village Hall and attempted to learn Finger Spelling and Sign Language for the Deaf. Everyone had 'a go' at spelling their names and some everyday signs.

The Raffle winner was Mrs. R. Stevens.

On November 7th, again in the Village Hall, members enjoyed a Quiz with the group prize going to the team consisting of Mrs. S. Loader, Mrs. K. Brock and Mrs. H. Jones and the individual prize winner was Mrs. C. Sault who was also the lucky winner of the Raffle.

The next meeting will be on December 5th in the Village Hall when we will be making a Pomander with oranges and cloves.

The first meeting of the new year will be held on January 9th in the Village hall at 2.30pm.

Di Buckland

ROWDE VILLAGE HALL

A Jigsaw and Second Hand Book Sale was held on October 14th in the Village Hall. Although there were not many customers the event raised over £90 for Village Hall Funds.

Di Buckland

MONDAY CLUB NEWS

Bromham and Rowde Day Centre for Older People
(See our poster on the opposite page!)

Monday Club enjoyed a visit to Serena and Craig Dalby's in early September, the weather was warm and we really enjoyed being in different surroundings. As ever our meal was delicious.

A couple of sessions recently have tried to encourage members to chat to people who they don't regularly sit with. Mix it Up Monday had a different arrangement of tables and suggested questions to ask each other. Can you believe that two members only paid £10 or £15 for their first cars? One week we had a feely game – members had to guess the objects in 6 different boxes, (nothing unpleasant!) and more recently we had some games of Beetle which caused quite a lot of laughter! We also keep fit with Ann's Move it Monday and enjoy Serena's delicious home cooked meals.

Thank you to everyone who supported our Autumn Coffee Morning when we raised just over £200. We'd also like to thank the Carnival Committee and the Café Team for their generous donations to our dwindling funds.

We're always looking for new members so why not come along and join us. For more information contact:

Carol - 01380 850925 or Cathy - 01380 850555

**The Rowde Village
News production and
distribution teams
would like to
thank you for your
support during 2023
and wish you all
**A VERY MERRY
CHRISTMAS**
and
**ALL THE VERY
BEST FOR 2024****

*Alan, Suzan, Julie, Sue
and all the distributors*

ROWDE VILLAGE NEEDS SOME ATTENTION...

Wiltshire Council continues to cut services around the county. Most grass verges, for example, will only be cut once a year. It will fall to the Parish Council and residents to re-claim our village and try to beat back nature.

Cleaning up the Village

The Parish Council encourages everyone who can to weed and tidy in front of their properties.

Every weed removed, is a step closer to a beautiful 'Best Kept Village'.

Thank you for your help.

GOOD FOOD, GOOD COMPANY AT MONDAY CLUB



I look forward to
Mondays!



It's so friendly
and welcoming!



Never a dull
moment!



The home cooked
food is delicious!



I go home smiling!

Why not come along and join us? To find out more about Monday Club, please contact :
Carol - 01380 850925 or Cathy - 01380 850555

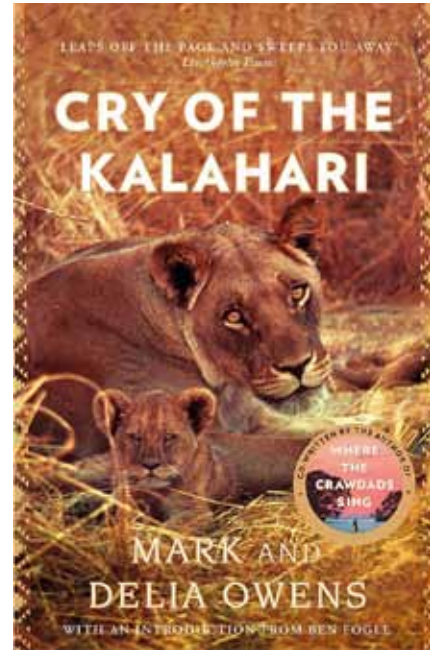
ROWDE BOOK CLUB

Meetings are generally held on the fourth Wednesday evening of the month. Contact Ann on 01380 724788 for further info.

BOOK REVIEWS

'Cry of the Kalahari' **by Mark and Delia Owens**

Cry of the Kalahari is a 1984 autobiography by American zoologists Delia and Mark Owens. Written while the husband and wife were on the cusp of middle age, it looks back on their time as wildlife researchers in Botswana's Kalahari Desert. They lived there for most of the 1970s, staking their home in the Central Kalahari Game Reserve at a remote site called Deception Valley. They lived an eight-hour drive from the nearest human-inhabited area, surrounded by a rich and dangerous wilderness. They focus their research on the African carnivore family, particularly jackals, hyenas, and lions. The autobiography positions the Owenses as aspiring scientists in a hostile wilderness indifferent to their search for knowledge. We found it an easy read but some of us felt there was too much detail – to the point of being upsetting. The frugal living conditions of the couple were also described fully as were their beautiful surroundings. However, as the book is now nearly 40 years' old and we have become so familiar with wildlife documentaries, some of the descriptions of animal life appeared to us to be somewhat repetitive and dated. Score: 7.5/10



Rosie Berry

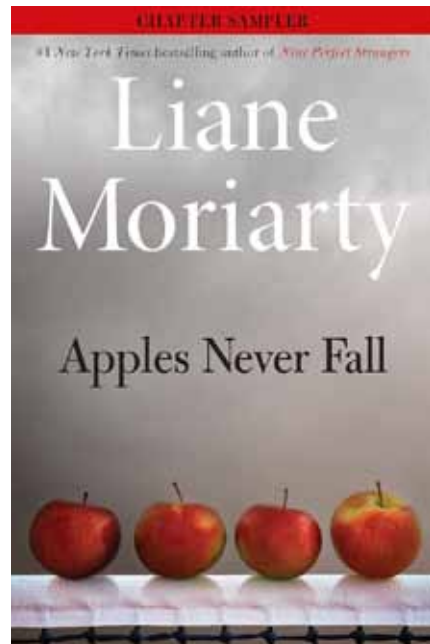
'Apples Never Fall' **by Liane Moriarty**

There was a memorable Book Club gathering on the 25th of October and the detailed discussions went as follows:

1. Lengthy Read: The meeting commenced with the understanding that Apples Never Fall proved to be a long read for multiple members. The length of the book hindered some from reaching the end, as it did not maintain their interest or provide a compelling narrative.
2. Unresolved Plot Points: Participants expressed frustration with certain unresolved plot points, leaving some wondering if clues had been missed or intentionally left ambiguous. This lack of closure left the overall story feeling incomplete.
3. Excessive Descriptions and Details: Several attendees voiced their disappointment at the excessive descriptions and unnecessary details present throughout the book. These elements distracted from the main plot and made the reading experience feel tedious.
4. Baffling Choices: The decision of characters to not pack any clothes when planning to go away left many members perplexed. This unrealistic choice was a topic of discussion as it seemed incongruous with logical thinking.
5. "No Such Thing as a Happy Marriage": Caro's statement that "there was no such thing as a happy marriage" resonated with the group, prompting relatable and amusing anecdotes about the challenges and compromises within marriage.

Summary: The overall consensus among the nine members was that the book fell short of expectations. Many found it to be a lengthy, with unresolved plot points and an abundance of unnecessary descriptions. Despite these disappointments, the discussion took an amusing turn when Caro's statement about the absence of happy marriages led to humorous anecdotes from the attendees. The book was collectively rated with a 4 out of 10.

Liz Denbury



ROWDEY COW NEWS



The Halloween Trail proved really popular with our younger customers throughout a busy half term. As did the spooky flavours of ice cream Karen created for our customers. Other new flavours we have enjoyed this month included Pistachio, Kinder Bueno, Snickers & Dime Bar. We are currently busy creating our Christmas flavours!



We are now on the run up to the Festive period with our first Christmas party in the Function Barn this Friday! The tickets for breakfast with Santa are selling out quickly on our website. We are receiving Christmas party and lunch bookings and also opening the café for a few evenings in December with our Christmas Menu and also some dates in the function barn for Christmas Party nights with Buffet. We have a lovely 2 or 3 course Christmas menu you can preorder for lunches or we are opening the café on the evenings of 13th, 14th and 21st December too. Please phone or message the café to book your table. We are also opening up our Function Barn on the 9th and 22nd of December for Christmas Party nights where you can book a table of 8 or more and each table is served with their own Christmas buffet, there's a drink on arrival and dance floor and bar – again please contact us to book your tickets!

We are looking forward to hosting the Rowde Church Christmas Crib Service here again on Christmas Eve and the pigs and ponies and donkeys are all back in the barn ready! We will be closed on Christmas Day, Boxing Day and New Year's Day.



We would like to congratulate Zakea, who is helping us out in the kitchen, as he won two awards at the Arte Non Stop Film Festival in Buenos Aires, Argentina – The Best Documentary Short Award & the Golden Special Recognition to the Artist Award! He is also helping us produce a Christmas Rowdey Cow Video which will be launching at the Breakfasts with Santa this year!

We would also like to congratulate my Mum & Dad (Adrian & Caroline) on their Golden Wedding Anniversary which they celebrated in our very own Rowdey Cow Function Barn earlier this month!

We would like to wish all of our customers a very Merry Christmas and a Happy New Year!

Sue

Christmas

AT THE ROWDEY COW!

CHRISTMAS LUNCHES	- 1ST - 24TH DECEMBER LUNCHES CAN BE PREORDERED FROM OUR 2 OR 3 COURSE MENU
BREAKFAST WITH SANTA	- TICKETS CAN BE PURCHASED ONLINE- 2ND, 13TH, 21ST, 22ND DECEMBER
CHRISTMAS EVENINGS	- 13TH, 14TH & 21ST DECEMBER- EVENING OPENING FOR CHRISTMAS MENU 2 OR 3 COURSE MEAL- PREORDERS ONLY
CHRISTMAS PARTIES	- GROUPS OF 8 OR MORE CAN BOOK A TABLE AT OUR CHRISTMAS PARTY NIGHTS- 9TH DECEMBER & 22ND DECEMBER
	OR
	- PARTIES OF OVER 20 CAN BOOK PRIVATE HIRE OF THE FUNCTION BARN WITH A BUFFET OR THE WHOLE CAFE FOR A SIT DOWN MEAL (DISCO/ DANCE FLOOR AVAILABILITY)

HIRING NOW

INCLUDING VACANCIES AT FURLONG CLOSE IN ROWDE!

0800 0588 515

APPLY TODAY



Est. 1986
Agincare
CAREERS

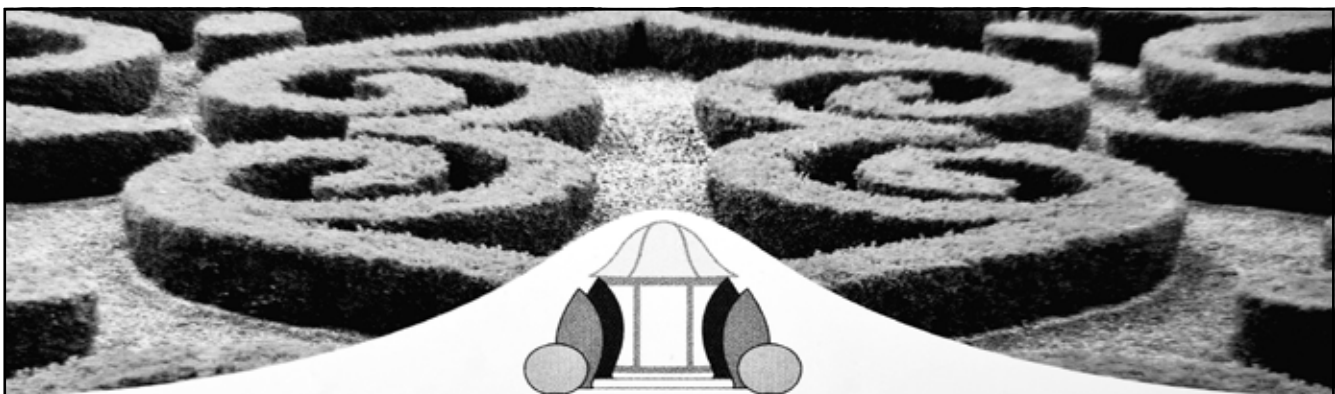
GRAY & AMOR LTD.

CARPENTRY & PROPERTY RENOVATION

Covering all aspects of property renovation and maintenance. View our range of services online or call to discuss your project.

01380 587006 / 01672 596006

info@grayandamor.co.uk www.grayandamor.co.uk



JHS

Garden Services

Email: jhsgardenservices@yahoo.com

Tel: Mark 07368 425618

mander duffill

— Est 1947 —


CHARTERED ACCOUNTANTS
TAX & FINANCIAL ADVISERS

WHAT WE OFFER:

- Accountancy and Tax Services
- Tax Compliance, Planning and Advice
- International Tax Planning and Advice
- Business Sales and Acquisitions
- Company Restructuring
- Company and Business Start-ups
- Management Accounts, Bookkeeping and VAT Services
- Payroll and Auto Enrolment
- Research and Development
- Financial Services
- Investments
- Protection
- Inheritance Tax Planning
- Pensions and Retirement Planning


GET IN TOUCH:

 info@manderduffill.com

 01249 650441

 The Old Post Office
41-43 Market Place
Chippenham SN15 3HR

DEVIZES OFFICE

 01380 711441

 45 New Park Street
Devizes SN10 1DT

Offices also in Malmesbury
and London



www.manderduffill.com

NEWS FROM ROWDE PRIMARY ACADEMY

Our bright start leads to their bright future

At Rowde C of E Primary Academy, we are well and truly settled into this academic year and we can feel the festive season slowly approaching. So far this year, we've had a number of successful open events – the first being based on Reading at the school and then one on Maths. In January, we're going to run one on RE and we will try to put this out into the community as you are all very welcome!

At the beginning of November, we had a successful Winter Wonderland forest school afternoon for our current Reception class and for prospective parents for next September – a fire, a range of forest activities, s'mores and, of course, a story around the fire.



Back in October, we had an amazing Bake Off event. We couldn't believe the standard and quality of the cakes that were submitted to the competition. We had three judges – two from The Gourmet Brownie Kitchen in Devizes and our amazing cook and cleaner, Nicky.



Our families worked together and each class had a first, second and third place. After school, the cakes were then sold in a bake sale and we raised £300 to go towards the library project...

NEWS FROM ROWDE PRIMARY ACADEMY (cont'd)

Our bright start leads to their bright future



Our library has been an ongoing project that we have worked hard on this term; reorganising and updating the space and books. We are so fortunate to have a lovely room, but it desperately needed going through and recycling the huge number of books we seemed to have from the 1980s! We have now ensured that every book on the shelves deserves to be read and would entice our children.



We have also invested £800 in new books, including a number of really high-quality graphic novels. Knowing that reading for pleasure has such a huge impact on the children's learning in all areas, we really want to get this right. Instead of organising the books alphabetically, we have sorted them into clear genres so the children can be guided by the type of book they want to read (funny, spooky, adventure, mystery etc.), rather than the disorganized alphabetised shelves, which is less overwhelming. So far, we've had amazing feedback from the children and now it's all sorted, we just have to ensure that we keep updating with new stock.



At the end of last half term, one of our long-standing member of staff – Helen Curtis – decided to retire to enjoy some holidays out of term time! As a result, we're looking for someone for wrap-around care. The hours are 7.45 – 8.45 and then 15.10 – 16.45 (with possibility of late to 17.30). If you're interested, please get in touch.

As always, we have an open-door policy at Rowde, and you are always welcome to come and have a visit. If you feel you have any skills or connections, or if you'd like to spend time with us, please do get in touch. I have also spent a lot of time updating the school website and it is now a wealth of information about us as a school, the classes and curriculum and our vision, values and ethos. If you have minute, do take a look: www.rowde.wilts.sch.uk

Alice Simpson, Head Teacher



NEWS FROM SILVERWOOD SCHOOL - ROWDE CAMPUS

Building Community, Inspiring Learning

Executive Headteacher - Mr Sean McKeown



Our value for this term is Courage, perfectly demonstrated by Rosie using her frame.



The weather never stops us at Rowde Campus! Although we have had a lot of wet weather recently, classes have still been getting outside to have their Learning Outside the Classroom lessons. When you have animals to look after and gardens to tend the learning never stops; pupils have been finding out about birds' nests.



Year 11 Performing Arts Music group performed their version of 'Someone You Loved'; by Lewis Capaldi to an audience of Key stage 3 and 4 pupils along with staff.



We were really happy to welcome Steve Pope, the Chair of Imperial Charity, to Silverwood who presented us with a cheque for £2000. The money has been used across Silverwood to pay towards activities for all our pupils. We are incredibly grateful to the charity for their continued support and the children were very excited to meet him.

We took part in Children in Need and raised £184 for their charity.

Teresa Ollerhead





Rob Hunt DipPFS

Phone

07970 256287

Email

rob@mwfs.co.uk

Location

Devizes, Wiltshire
Home visits available



**Free initial
consultation.**

**Free financial
health check.**



Trusted Unbiased Financial Advice

Plan today for a better tomorrow

My expertise

- Investment Planning
- Inheritance Tax Planning*
- Retirement Planning
- Mortgages & Protection
- Equity Release

*Inheritance Tax Planning is not regulated by the Financial Conduct Authority.

About me

With 30 years of experience in financial services, I'm passionate about helping individuals and families reach their financial goals. I prioritise building long-term relationships with my clients based on trust, integrity, and personalised advice.

My transparent, easy-to-understand guidance enables you to make informed decisions and achieve greater peace of mind. Contact me today for a fee-free consultation.

Michael Williams Financial Services Ltd, 15c Vine Street, Evesham, Worcs. WR11 4RE
Tel: 01386 422461 Web: www.mwfs.co.uk

Michael Williams Financial Services Ltd is an appointed representative of The Whitechurch Network Ltd which is authorised and regulated by the Financial Conduct Authority.
Registered in England & Wales No: 5263058

Your Parish Council

Please visit the rowdevillage.org website, the Rowde Parish Council Facebook page and the village noticeboards for a full set of minutes and confirmation of forthcoming Parish Council meetings.

If you would like to receive a hard copy of the minutes, please contact the Parish Clerk.

The Parish Clerk can be contacted by email: rowdeparishcouncil@gmail.com or on: 07752 724096

Parish Council Meetings

The Parish Council met on 11th October & 8th November.

New Parish Council Chairman

Lisa Wills has been elected as Chairman for Rowde Parish Council. Lisa has been the Vice-Chairman for a couple of years previous to this role. We wish Lisa every success in her new position.

Resignation

Tom Humphreys has left Rowde Parish Council. Tom has helped the village greatly including helping to set up the Speed Indicator Device (S.I.D). The Parish Council expresses gratitude to Tom for his contributions to the Parish Council and the village. Tom's vacancy is being advertised by Wiltshire Council.

Vacancies

There is already one vacancy on the Parish Council which can be filled through co-option. If you can spare an evening a month and are interested in what happens in your village and you want to hear about it first, join the Parish Council. If anyone is interested in joining the Parish Council, please contact the Parish Clerk.

Christmas

A local business 'OxLea Barn' Oxford Down Sheep has donated a Christmas tree to the parish. The parish accepted the offer with very many thanks.

Window Advent Calendar – M Humphreys will be lead the Advent Calendar window project again this year after the project was enjoyed by so many last year.

Planning

At the time of writing, a decision has still not been made about the proposal to build 50 homes on land off Sands Lane. If Wiltshire Council Officers intend to approve the application, the application will be 'called in' and will come before the Strategic Planning Committee. The next meeting will be on Wednesday 29th November 2023.

Reed Place / Haymeadow Way

A question was submitted in writing before the Parish Council meeting asking for an update on the Wiltshire Council development on land adjacent to Reed Place. The Clerk updated the meeting that Rowde is the third party in a pilot scheme. The other two parties have started building. It is estimated that building in Rowde will be a couple of months behind the first two sites.

Planning Applications

- PL/2023/04363: Lower Farm, Devizes Road, Rowde, Devizes, SN10 2LX. Erection of agricultural building (retrospective) and change of use to two flexible use commercial units (Unit 1 – Class B8 and Class E(g) only and Unit 2 – Class

B8 and Class E only). The Parish Council had no comment to make on the application.

- PL/2023/07208: Land adjacent 35 Tower View, Rowde, Devizes, SN10 2PS. Outline application with all matters reserved for erection of a Dwelling. Deadline for comments: 30th November 2023. The Parish Council discussed concerns around access to the proposed site. It was proposed that the Parish Council objects to the application on those grounds if it is unable to obtain an extension on time to consider the application.

- PL/ 2023/09231 4 Scholars Park. Single storey rear extension – amended design following approval of application PL/2023/07124 – application received after agenda had been published. Parish Councillors were asked to submit their comments in writing to the Clerk for submission to Wiltshire Council.

- PL/2023/07402. Silverwood School, Rowde, Devizes, SN10 2QQ. Listed building consent: Removal of decayed, corroded, painted metal fire escape stairs and replacement with new galvanised, acid etched, and epoxy painted steel fire escape stairs. The Parish Council had no comment to make on the application.

- C Greenwood updated the meeting that the Hillworth Road planning application has been won on appeal by the developer. There are problems around sufficient land supply in Wiltshire which is being taken up with the Secretary of State.

- Request by Society of Merchant Venturers to meet with Rowde Parish Council to discuss land for development in Rowde. The Merchant Venturers would like to discuss a potential development on land at Tanis (15 houses), behind Conscience Cottages, and also adjacent to Conscience Cottages to go up to the Rowdey Cow (50 houses in total). It was stated that there is no room for this development within the emerging Local Plan and that the suggestion should be dismissed. C Greenwood suggested postponing the decision to meet with Merchant Venturers until after Christmas.

- Local Plan Consultation: residents are invited to comment on Wiltshire Council's Draft Local Plan until 22nd November 2023.

- Wiltshire Council held local consultations on the plan in locations across the County. Cllr Mayes attended the local event, along with local residents. The draft housing target figures for Rowde is 67. Twenty houses have already been built or committed, leaving a balance of 47 houses to be developed. The draft plan requests that the houses in Rowde are committed towards the end of the lifespan of the plan, which could be near to 2040. Some residents have queried the need for a further 47 houses. The County can not currently demonstrate that it has a 5-year land supply, in spite of Wiltshire meeting its targets so well. The County currently has a 4-year land supply and a nearly finished local plan. Wiltshire Council has approached the government to ask if that will be an acceptable compromise.

Village Appearance

- Fly tipping. The Parish Council and ultimately Rowde residents have to pay for fly tipped items to be cleared from Parish Council owned land. There have been issues with waste items being left in the allotment car park.
- Dog waste. The Canal and River Trust have removed their dog waste bins from the flight of locks, due to costs. The Parish Council will monitor the number of complaints received to assess whether dog waste becomes a problem along that stretch of the canal.
- Jubilee Wood Volunteers: The Parish Council thanks the volunteers for the Canal and River Trust for keeping the paths walkable through the Jubilee Woods and for all of the work that they continue to do.

o Village Walk Leaflets:

The Parish Council created village walks leaflet some years ago. This leaflet needs updating as some of the businesses advertised are no longer in business. The Parish Council discussed whether other walks could be added to the leaflet, or whether the walks could be loaded to the website with links through QR codes. It was agreed to postpone further discussion until the January Parish Council meeting.

Safety

- Data from the Speed Indicator Device has been submitted to the Police for October 2023. This will help to ensure that appropriate enforcement is deployed to Rowde.
- C Greenwood has secured the return of the Community Speedwatch Camera. Speedwatch checks will start again soon.
- The Parish Council has discussed purchasing a second Speed Indicator Device. It is agreed to monitor data from the existing data before a second device is purchased.

Finance

July 2023 invoices (total: £40,060.42)

- Admin costs: £1,779.01
- Grounds' maintenance: £742.48
- Allotments: £193.95
- Misc: £24.98
- New play equipment: £37,320.00

August 2023 invoices (total: £3,382.20)

- Admin costs: £1,779.01
- Grounds' maintenance: £1,225.19
- External audit fee: £378.00

September 2023 invoices (total: £3,656.79)

- Admin costs: £1,779.01
- Grounds' maintenance: £1,252.58
- Playground inspections: £385.20
- Play equipment: £240.00

October 2023 invoices (total: £2,683.09)

- Admin costs: £1,814
- Ground's maintenance: £687.11
- Donations: £181.98

Wiltshire Council updates

- Cllr Mayes updated the Parish Council that Wiltshire Council has invested £480k into installing electric vehicles charging units, working towards their target to be carbon neutral by 2030.
- Wiltshire Council has been successfully prosecuting people for fly tipping.
- Staff at Household Recycling Centres will check black bags of waste that are being deposited at the centres for recyclable items.
- Wiltshire Council has invested £10million in to road improvements across the county.
- Wiltshire Council has been awarded a further £2.1m by the Department for Transport (DfT) to spend on improving bus services in the county. This second allocation of funding for the period 2024 to 2025, is from the Government's Bus Service Improvement Plan Plus fund and follows an earlier allocation in May for 2023 to 2024. Both nationally and locally, bus passenger numbers have struggled to increase back to pre-COVID levels, and this has been compounded by the challenging economic climate, high fuel prices and a national bus driver shortage. This bus funding is aimed at helping address these issues, maintaining and growing bus service levels across the county.

Stay Connected!

Website: Thank you to A Humphreys for managing the village website.

Facebook page: Check out the Parish Council's Facebook page for news and events. Managed by L Wills and A Humphreys.

Contacts: The Parish Clerk can be contacted at rowdeparishcouncil@gmail.com, or by telephone: 07752 724096 in office hours. Parish Councillors can be contacted through the contacts page of this magazine.

My Wiltshire App

- The more reports that are logged through 'My Wiltshire', the higher the priority the issue will be given.
- It is easy to report problems like potholes, dog mess, graffiti, litter and street lighting in your area using the 'My Wiltshire' online form. Reports can be made anonymously, or you can register for free. Once you have registered, you can track the reports you have made, and receive notification once the work has been completed. The more residents report issues, the more likely we are to have them fixed.
- The 'My Wiltshire' page can be accessed through the Wiltshire Council website at: <https://www.wiltshire.gov.uk/mywilts-online-reporting>

Concerns

If you have any local concerns about footpaths, hedges, allotments, play facilities, or anything village related, we would like to hear from you. We value your input and suggestions and will try to help.

You can contact us through the Rowde Parish Council Facebook page, or by e-mail: rowdeparishcouncil@gmail.com, or by telephone: 07752 724096.

Police Matters

If you need to report a crime: Please dial 101 to report a crime and 999 in an emergency. It is possible to follow the Police on:

Twitter <https://twitter.com/wiltshirepolice>

Facebook <https://www.facebook.com/wiltshirepolice/>

Or sign up to Community Messaging <https://www.wiltsmessaging.co.uk/>

Dates for the diary: Parish Council meetings dates can be found in the village diary on page 41 of the magazine.

We invite all villagers to attend, to observe and to make use of the public question time in the meeting.


ROWDE PARISH COUNCIL			
Lisa Wills	Chair/Planning	rpc.lisa.wills@gmail.com	01380 730078
Vacant	Social Media		
John Dalley	Sports & Playing Fields	jdtaxisdevizes@gmail.com	07592 063789
Pat Bryant	Planning	rpcpatbryant@outlook.com	01380 698567
Chris Stevens	Village Appearance	rpc.cstevens010@gmail.com	
Barbara Zaccarelli	Village Events	barbarazaccarelli@yahoo.com	01380 726316
Mark Somerville	Allotments, Safety	jhsgardenservices@yahoo.com	
Mandy Humphreys	Website, Social Media, Furlong Close liaison	rpc.mandy.humphreys@gmail.com	
Josh Wills	Playing fields; Youth Co-ordinator	rpc.joshwills@gmail.com	
Chris Greenwood	Neighbourhood Planning, Tree Officer, Roads & Transport	cj_g@me.com	07525 185514
Vacant	Speed Indicator Device		
Rebekah Jeffries	Clerk	rowdeparishcouncil@gmail.com	07752 724096

Wiltshire County Councillor for Rowde			
Laura Mayes	Wiltshire Councillor	laura.mayes@wiltshire.gov.uk	

WILTSHIRE COUNCIL - Useful phone numbers			
Libraries:	01225 713000	or mobile/outside Wiltshire:	01225 777234
Parking:	01380 734812	School admissions:	01225 713010
Pest control:	01380 734721	School special educational needs:	01225 718095
Planning:	01380 734812	School transport:	01225 713004
Recycling boxes - Hills Waste:	0845 6032085	Social care – adults:	0300 456 0111
Registration - Births, Deaths & Marriages:	01225 713007	Social care – children:	01225 773500
Roads & pavements (Clarence) Freephone:	0800 232323	Street care and cleaning:	01380 734849

CRIB SERVICE
AT THE ROWDEY COW
WITH ST MATTHEW'S CHURCH
2.30PM CHRISTMAS EVE




COME AND HEAR THE
CHRISTMAS STORY
AND MEET THE ROWDEY COW
ANIMALS



ESPECIALLY SUITABLE
FOR FAMILIES
WITH YOUNG CHILDREN

St Matthew's Church,
Rowde

COFFEE and CAROLS



Tuesday 19th December
10.45 am – 12 noon

Coffee or tea, cake and
chat plus Christmas music

All Welcome!

GAIGER BROTHERS LTD

Building Contractors

6 Northgate Street, Devizes, Wiltshire SN10 1JL

Tel: (01380) 722412

Fax: (01380) 727890

The Wiltshire Bobby Van Trust



Registered Charity No 1153790

The Wiltshire Bobby Van Trust provide a Courtesy Home Security Service for elderly, vulnerable and disadvantaged people living in Wiltshire, who have become, or are at risk of becoming victims of house crime or domestic abuse.

Our operators will carry out a full security and fire risk assessment before fitting the appropriate security devices. If you are over 60 or vulnerable due to a mental or physical disability and don't feel that you have adequate home security please contact us to arrange a visit.

Tel No: 01380 861155 Email: bobbyvan@wiltshire.police.uk
www.wiltshirebobbyvan.org.uk



BEWLEY

Funeral Directors Limited

Our family are here for your family

Devizes local family funeral service EST. 1970

Three generations of experience, personal values and professional service

24 Hour Service | Home Visits | Simple or Bespoke Funerals | Pre-paid funeral plans | memorials

Devizes 01380 728008

Office & Chapel: 64 New Park Street, Devizes, SN10 1DP
Over 100 reviews at www.bewleyfunerals.com



December & January Worship in Rowde, Bromham and Sandy Lane



Services in St Matthew's, Rowde are in bold
 Services in Bromham and Sandy Lane are in *italic*

Date/Time	Service
DECEMBER	
Sunday 3rd	(Advent 1)
8am	Holy Communion (BCP) Rowde
<i>10am</i>	<i>Holy Communion Bromham</i>
Sunday 10th	(Advent 2/St Nicholas)
<i>8am</i>	<i>Holy Communion (BCP) Sandy Lane</i>
10am	Holy Communion Rowde
Saturday 16th	Saturday 16th
6pm	Carol Service Rowde
Sunday 17th	(Advent 3)
<i>10am</i>	<i>Holy Communion Bromham</i>
Sunday 24th	(Christmas Eve)
2.30pm	Crib Service at the Rowdy Cow Rowde
11:30pm	Midnight Mass Rowde
Christmas Day	Christmas Day
<i>8am</i>	<i>Holy Communion (BCP) Sandy Lane</i>
10am	Christmas Holy Communion Rowde
Sunday 31st	(Christmas 1)
<i>10am</i>	<i>Holy Communion Bromham</i>
JANUARY	
Sunday 7th	(Epiphany)
8am	Holy Communion (BCP) Rowde
<i>10am</i>	<i>Holy Communion Bromham</i>
Sunday 14th	(Baptism of Christ)
<i>8am</i>	<i>Holy Communion (BCP) Sandy Lane</i>
10am	Holy Communion Rowde
Sunday 21st	(Epiphany 3)
<i>10am</i>	<i>Holy Communion Bromham</i>
Sunday 28th	(Epiphany 4)
<i>8am</i>	<i>Holy Communion (BCP) Sandy Lane</i>
10am	Holy Communion Rowde

Everyone is very welcome at all our services.

Please visit www.achurchnearyou.com for more information, check our church noticeboards or contact the Benefice Administrator at sarahbromhamandrowde@gmail.com.

Church Opening Times

Rowde Church: Mon to Sat 10am – 4pm;

Sunday 10am – 4pm or after morning service.

Bromham Church: Daily 9am – 5pm

Sandy Lane Church: Daily 9am – 5pm

A Message from Revd. Heather

Christmas is just around the corner. I wonder if you're ready? My husband ordered our turkey in mid-November and it seems that preparations

get earlier and earlier every year. But Mary, like all mothers, had many months to think about the arrival of her child. We celebrate the Annunciation -when the angel came to tell Mary she would bear a child – early in the year. In first months of a pregnancy, there's nothing much to do, except wonder. If it's your first baby, you wonder how it's all going to go. Perhaps you read books and ask others about their experiences. But none of it really prepares you for the birth and for the reality of having a baby. When the baby arrives, there is wonder in a different sense – most new parents wonder how two people could have created such a tiny, perfect human being.

At Christmas we celebrate the arrival of God in human form. While we enjoy the presents, the celebrations and perhaps the traditional carols, can we find time to wonder that God chose, not to be a remote being in an unknown place, but someone who chose to join us in our world and experience joy and sorrow just as we do?

I wish you all a happy and peaceful Christmas.

Revd Heather Smith

Associate Priest

Rowde and Bromham

REGULAR ACTIVITIES

Rowde Church Café Tuesday 10:45 – 12pm.

Come and join us for coffee, cake and a chat. Everyone welcome!

Craft, Coffee and Chat at St Matthew's, Rowde Friday 2pm – 4pm

Bring your own craft project or join in our jigsaw. All welcome! No entry fee. Coffee and cake available for a donation.

Souper Saturdays at St Matthew's, Rowde First Saturday of the month, 12 – 1pm

Come along and enjoy a choice of two soups (always one vegetarian choice) with a roll. Donation to St Matthew's welcome.

Growing in Faith Wednesday evening 7:30pm – 9pm on Zoom (fortnightly, term time only). If you are interested in joining, please contact Ruth on ruthbray@outlook.com.

Flower Arranging at Rowde

Please contact Caroline Keevil on ck@carolinekeevil.co.uk or call 07860 148407.

Choir at St Matthew's

We practice from 6pm-7pm on the Fridays prior to a 10am Sunday service. Please contact **Nicola Brown** at nicola_brown@talk21.com or 01380 722406.

Bellringing at St Matthew's

Please contact Michael Cornwell at michael.cornwell@btinternet.com or 07388 224129.

Open the Book at Rowde

Contact Fran Hall on 07989758412

CONTACT US

Rector: Vacant

Associate Priest: (Funerals, baptisms and weddings) Revd Heather Smith on 07702 113544 or revheathersmith@gmail.com

Benefice Administrator: Sarah Leckie sarahbromhamandrowde@gmail.com

During the current vacancy, please contact Revd Heather or Sarah if you wish to enquire about a baptism, wedding or funeral.

Safeguarding Representative for Bromham and Rowde: Phil Bayley 01380 859569

Benefice Facebook page Churches of Rowde and Bromham: www.facebook.com/groups/439328832796693

Benefice website: www.achurchnearyou.com/church/9690

Diocese of Salisbury: <https://www.salisbury.anglican.org>



better lives for children with crohns and colitis

Our vision is a childhood unlimited by inflammatory bowel disease and our mission is to lead research into better treatments, to support children and families with relevant information and advice, to work with health professionals to improve care, and to give children a voice to increase public understanding of Crohn's and colitis.

Help us help children by donating at: <https://www.cicra.org/donate/>

Craft, Coffee and Chat
at St Matthew's Church,
Rowde

Friday Afternoons
2pm – 4pm



All Welcome!

No charge to enter,
coffee and cake available
for a donation

EATING OUT & ABOUT Beanery Café

We only recently found this little hidden gem, even though it is almost on our doorstep on the road to nearby Poulshot. Run by 'Hollychocs' Chocolate Engineer, the cafe is small and cosy in physical area but big on the quality of it's products. The Café is a place to meet and enjoy some delicious handmade chocolatey treats and I can predict you won't be disappointed, we certainly weren't!



I recommend you sample their amazing hot chocolate menu (featuring 12 different chocolates from white, to milk and dark - yes, there's really something for everyone) or enjoy coffee and teas from their local partners Dusty Ape Coffee and Tea Inc. The café menu includes an ever changing selection of handmade sumptuous chocolatey treats including brownies and blondies, waffles and soft serve gelato. Within the Beanery is a chocolate shop, featuring a full chocolate selection from award-winning chocolate boxes, to honeycomb and more.

There is seating inside and out, plenty of parking for cars and bikes and dogs are welcome outside.

Opening hours are Thursday to Saturday 10am until 4pm and you can find them at Unit 1, Poulshot Lodge Farm, Wiltshire, SN10 1RQ

Got a question? Get in touch at info@hollychocs.co.uk

Footnote: We popped along there recently. The coffee and cakes were excellent and the friendly atmosphere made it a great little trip out. And you can even walk there from Rowde! Ed

LOCAL HONEY FOR SALE

Rowde Hall Cottage
High Street, Rowde SN10 2PL
(Opposite Cross Keys)
01380 722406
davidb.rowde@gmail.com
£5 for a 12oz jar (340g)



FREE CAT NEUTERING



Do you want to
neuter your
kittens
and
cats?



You know it's the right thing to do, and..
we are here to help you!

RSPCA Wiltshire Mid Branch

will pay, for a limited period, the cost of neutering and, at the same time, micro-chipping your cats and kittens if you live in **Devizes, Melksham, Westbury or Warminster** or the surrounding villages.

To apply for financial help to have your cats neutered, and, if you wish, micro-chipped at the same time, please send a blank e-mail to cnwiltsom@gmail.com
We will reply with a link to the application form.
If you prefer you can telephone 07494-240622

YOU CAN APPLY FROM 25TH FEB. UNTIL 30TH APRIL 2020



Wiltshire Mid Branch
Registered charity no. 205925

Working together
to help you
and your pets



Registered charity no. 203644

Wiltshire Buildings Record, a charity that has a growing and very detailed database of the county's vernacular buildings – and which is based at Chippenham's History Centre – is seeking new members.

For further details please go to www.wiltshirebuildingsrecord.org.uk/membership/
Organisations such as local history groups are charged £25 per annum, whilst individuals pay £14.

Please help us identify and study historic buildings throughout the county.



FUN COLUMN

This issue we have some festive jokes:

What happened to the man who stole an Advent Calendar? He got 25 days!

Who delivers presents to baby sharks at Christmas? Santa Jaws!

What do they sing at a snowman's birthday party? Freeze a jolly good fellow!

What do Santa's little helpers learn at school? The elf-abet!

What kind of motorbike does Santa ride? A Holly Davidson!

What did Santa do when he went speed dating? He pulled a cracker!

Why was the turkey in the pop group? Because he was the only one with drumsticks!

What do you get if you cross Santa with a duck? A Christmas Quacker!

Why does Santa have three gardens? So he can 'ho ho ho'!

What is the best Christmas present in the world? A broken drum, you just can't beat it!

What do snowmen wear on their heads? Ice caps!

What did Adam say the day before Christmas? "It's Christmas, Eve!"

What do you get when you cross a snowman with a vampire? Frostbite!

What did the stamp say to the Christmas card? Stick with me and we'll go places!

Why did no one bid for Rudolph and Blitzen on eBay? Because they were two deer!

What does the King call his Christmas Broadcast? The One Show!

Why don't you ever see Santa in hospital? Because he has private elf care!

How did Mary and Joseph know Jesus' weight when he was born? They had a weigh in a manger!

Why is it getting harder to buy Advent calendars? Their days are numbered!

What do you call a bunch of chess players bragging about their games in a hotel lobby? Chess nuts boasting in an open foyer!

What did the beaver say to the Christmas Tree? Nice gnawing you!

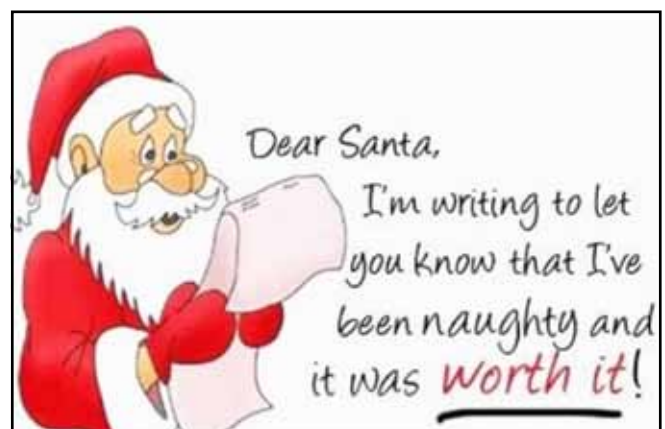
What does Santa do with out of shape elves? Sends them to an elf Farm.

Why did Santa's helper see the doctor? Because he had a low "elf" esteem!

Who hides in the bakery at Christmas? A mince spy!

FUN PICS

This issue we have some festive cartoons:



ORIGINAL PET and PEOPLE PORTRAITS



Colour or mono portrait of a person, pet or horse by local artist Alan Watters. Original portrait, two prints and three greetings cards included in the package. My waiting list is currently around October but a voucher can be supplied to be given as a present if required.

Call or text Alan on 07886870053 or Email watters.alan@gmail.com for more information or text/email a good photo for a quote. Website: <https://alansfineart.com/>

ALLOTMENT VACANCIES



Are you a keen gardener who needs more space? If you are interested in renting an allotment, please contact: Rebekah Jeffries rowdeparishcouncil@gmail.com
Tel: 01380 501919 Rowde Parish Council

Amanda Phillips Local Mobile Hairdresser

Cut & Blow Dry - £25
Gent's Cut - £15
Colours from £35 inc. cut
Highlights from £35
Perms - all inclusive £48



Phone for a quote 07889 744727
amandapagethairdesign@hotmail.com



Heather Smith
North Wessex Therapies

Change and Wellbeing Therapy

cognitive behavioural therapy - hypnotherapy - relaxation -
mindfulness - stress management

Face to face appointments now available at The Therapy Rooms, 32
New Rd, Chippenham and in Bromham

anxiety - stress - phobias - chronic pain - habits - poor sleep
life goals: career - personal life - sports

Call for a chat or email
t: 07702 113544

e: heather@northwessextherapies.com
w: www.northwessextherapies.com

THE BUZZ ABOUT BEES

The Bees Knees

I'm stretching it a bit as we are talking about the bees' legs - bees don't really have knees. Bees are insects and insects famously have 6 leg but all legs are not created equal.

A bit of navigation first and what follows also applies to bumblebees. The legs are attached to the thorax, the bee's mid-section (as are the wings) and the legs are hairy. In fact the whole bee is covered with hairs including their eyes! The legs are used for walking around and clambering about on flowers but there are some special features.

After a bee has visited a flower, as well as the nectar in its honey crop, there can be pollen caught in the hairs. Sometimes the bee is absolutely covered in pollen (See fig A). Now the



Figure A - Pollen covered bee

bees want this pollen to take back to the hive but the pollen needs to be packaged for transport. As anyone who has shaken catkins or cleaned up under lily blossoms will know, pollen is a fine powder; so how do you transport that without tools or hands? The pollen is caught between the hairs. Bee's hair is adapted for this and each hair is more like a feather with many strands (see Fig B.) and

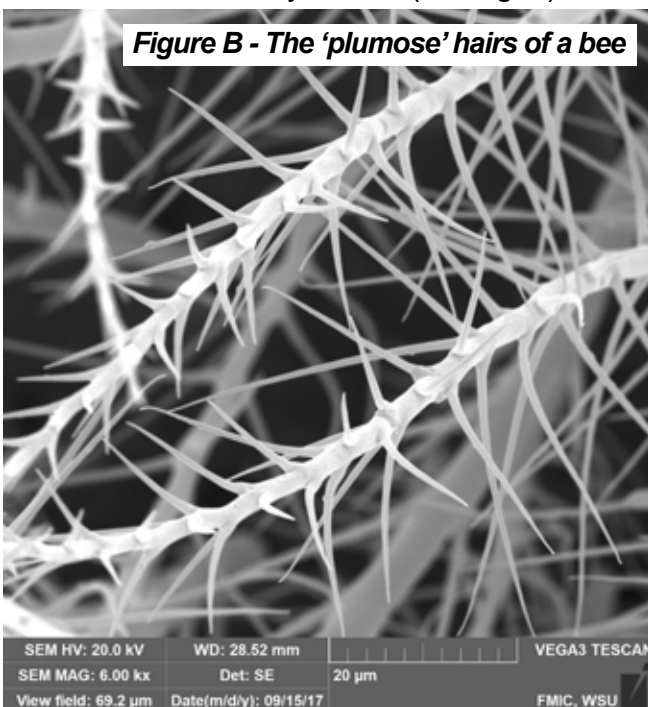


Figure B - The 'plumose' hairs of a bee

SEM HV: 20.0 kV WD: 28.52 mm VEGA3 TESCAN
SEM MAG: 6.00 kx Det: SE 20 µm
View field: 69.2 µm Date(m/d/y): 09/15/17 FMIC, WSU

pollen similarly is often adapted to have (very small) hooks or spikes on it so that it catches in the hair.

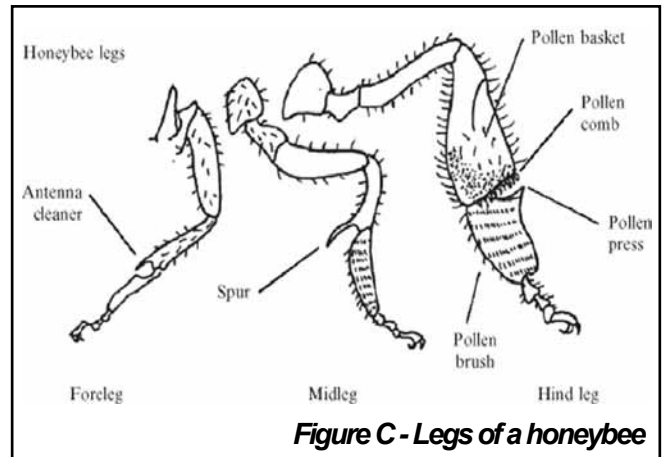


Figure C - Legs of a honeybee

The bee combs itself with its hairy legs, working the pollen down to the back legs. Between the joints of the back leg is the pollen press (see rear leg on Fig C). The pollen is gathered there, moistened with a little nectar to make it stick together and pressed into little pellets by closing the pollen press (straightening the leg). The bee then manipulates the pellet into the pollen basket (the corbicula); there is no bag – just a ring of stiff hairs and one long strong hair down the middle of the basket which the sticky pollen pellet is pressed onto. The bee is doing all this with her back legs and sometimes when she is flying. The pollen load on the back legs gets bigger as the bee continues to work the flowers and eventually, is taken back to the hive where it is packed down into a cell for use by the nurse bees to feed to the larvae and young bees.

Some of the pollen gets onto the antennae which leads us to another feature. The antennae allow the bees to smell, detect carbon dioxide and humidity, and determine how fast the bee is flying. All this in addition to being a feeler. So very useful to the bee but it needs to be clean to work at its best. Nature has covered this. The front legs have a special adaption called the antennal notch or antenna cleaner (see front leg on Fig C). This notch is lined with bristles and can be closed on the antenna and run along the length. Before the bee flies she gives the antennae a couple of wipes through the notch, and she's ready to go.

At the end of all her legs is a foot or claw. There are two tiny but strong claws which allow her to grip on rough or soft surfaces and between them is a soft pad called the arolium. This can act like a plunger or sucker and so allows the bee to cling to smooth surfaces like glass.

A final word as this is the Christmas edition. Bee folklore says that the bees hum at midnight on Christmas Eve to welcome the Christ child. I can't confirm this and I can't say I will be checking, but I can say I will visit the bees on or about New Year's Day to make sure the bees have enough food for the worst of the winter.

David Brown, Rowde Hall Cottage
01380 722406 davidb.rowde@gmail.com

Local News



REMEMBRANCE CONCERT



Oh what a marvellous evening we had on November 11th in St. Matthews Church when the Wiltshire Police Band delighted everyone with a mixed programme of music ranging from the Post Horn Gallop to a melody of Vera Lynn songs. This was a joint event organised by St. Matthew's Church PCC and the Rowde Village Hall Committee who will both benefit by over £300 each from the sale of tickets and the raffle.



Many thanks to all who attended and to the kind donors of the lovely raffle prizes and especially all the members of the band for arranging this evening.

REMEMBRANCE SERVICE



Despite the damp and drizzly weather, there was a good turn out for the Remembrance Sunday service held at St Matthew's at 3pm on 12th November. The service was taken by Revd. Heather Smith Serjeant, who gave a poignant address on the subject of Remembrance. Robin Eccles read the traditional passage from the book of Micah. Michael Cornwell read "Blood Red Poppies", and an eye catching visual interpretation of





the poem executed by Caroline Keevil was on display in church. Michael also read the names of those who are commemorated on Rowde's war memorial. Kelvin Nash played the Last Post before the two minutes' silence, and Reveille afterwards.



The service ended outside, beside the war memorial, where three poppy wreaths were laid on behalf of Rowde village, St Matthew's Church and the Boys Brigade, in remembrance of those who gave their lives. A collection was taken in aid of the British Legion.

COMMUNITY SPEEDWATCH



Following a frenetic series of email exchanges, I am pleased to announce that the Rowde Community Speedwatch is now fully restored to an active group.

I am soon to receive official confirmation that I will be the Team Leader, and we now have access to our original Speed Camera, together with all the necessary accessories.

At present we will be sharing it with Brickley Lane, and Seend CSW groups, but this will be reconsidered in the New Year.

Any previous members will be added to the group, however I need to register those - together with any other interested parties.

Please could you contact me by email, giving your full name and address, with email and telephone numbers, in order that I can forward any necessary paperwork to you, and compile a record for the CSW team in Trowbridge.

Our SID is now recording information on a monthly basis for uploading to the Central Database, which will assist the Enforcement Team with regard to the optimum time for patrols.

The Enforcement Team have already been active several times outside the school, and have been able to invite first time offenders to Speed Awareness Courses, with repeat offenders receiving fines, or notices of prosecution.



Thank you all for your ongoing interest in our efforts, and my particular thanks to Tony Jeffries, for his confidence and ongoing loyalty to the scheme.

Chris Greenwood

THE MIND TREE CAFÉ CIC

Promoting holistic Therapies at Furlong Close, Rowde.

A not-for-profit community interest company set up with the purpose of promoting mental health and well-being in a variety of ways.



Opening in January 2024



Success is in community not in isolation.

The last few months we have been working with stakeholders to put together a sustainable plan to support as many different people and groups as possible, guided by you.

Would you, a family member or friend benefit from low-cost counselling?

£25 per session – Initial assessment £10
counselling@themindtreecafe.org

There are a couple of reasonably priced therapy rooms still to rent for therapists who would like to have their own space or rent by the hour or



half day. And there are also larger studios to rent for training, events or workshops - regular or occasional. Competitive rates available.

We are putting together our year of events.

December 2nd – We will be at the Furlong Close Christmas Market – a chance to introduce ourselves and some of our creative ideas for well-being.

January - coffee morning to say hi, a chance to connect. The end of the month will be our “Beat the Blues” disco, a feel-good event for those dreary January days.

2024 Events - we hope to include an Art Exhibition, Concert, Drama Piece, Coffee Mornings, Crafts, Yoga, Meditation, Men’s Groups, Climate Café, Horticulture and more.

If you have a skill which might benefit the project, from practical support, buildings maintenance, admin, finance, arts and crafts please volunteer, we need you. enquiries@themindtreecafe.org

Thank you to those who have volunteered and donated in so many valuable ways so far. Please keep this coming.

Apple Juice, apples picked from our orchard and pressed by Shed Cider Bromham is available to buy at Robert Douse and Son butchers and Superior Plants both in Market Lavington. All proceeds to the project.

We have a go fund page – <https://gofund.me/bcc39437>

Look out for updates on social media and our leaflet drop in the next few weeks.

Follow us on Instagram

<https://www.instagram.com/themindtreecafe>

Follow us on Facebook

<https://www.facebook.com/themindtreecafe>

Email – enquiries@themindtreecafe.org

Website coming soon.....



MAKE A DIFFERENCE IN YOUR LOCAL COMMUNITY... JOIN DEVIZES & DISTRICT FOODBANK AS A TRUSTEE!

About our food bank

Established in 2007, Devizes & District Foodbank (DDFB) is a Charitable Incorporated Organisation and part of the Trussell Trust (www.trusselltrust.org) network of food banks. We're a well-established and effective food bank, with our main centre and food store in Devizes; we cover a number of towns and villages, including Marlborough and Pewsey. We currently have three members of staff, two of whom are part-time and around fifty volunteers. We support over 2,000 people per annum, we work with more than 60 recognised agencies and process more than 25 tonnes of food and consumables per annum.



Joining our board of trustees

We're looking to recruit new trustees to the board of Devizes & District Foodbank. This is an exciting opportunity to become part of a team, dedicating your time and support to help your community. Our trustees have experience in a range of fields, but we are looking to add to this, and to our local knowledge.

We're looking for new trustees who might be:

- interested and experienced in organising Events
- interested or experienced in safeguarding and Health & Safety
- interested or experienced in the benefits system or universal credit
- based in the Marlborough or Pewsey area
- passionate about Devizes & District Foodbank's work

If any of the above sounds like you, we'd love to hear from you.

As a trustee with Devizes & District Foodbank, you'll play a vital role in supporting the leadership of the food bank and ensuring that the food bank can continue to provide support to those who need it in your local community. Our trustees meet formally four times a year but in addition there are sub-groups and teams so the commitment can be two to three days per month or more.

How to get in touch

Interested parties should email Richard Oliver at richard@devizesdistrict.foodbank.org.uk and will receive back various materials, including a copy of our recruitment policy and the general requirements of the role. We'd be really happy to chat to you about the role of trustee and what it means to be on the board of Devizes & District Foodbank!

CANAL AND RIVER TRUST'S REMOVAL OF DOG POO BINS CRITICISED

Hundreds have signed a petition to reinstate dog waste bins on the Caen Hill canal footpath after a "disgusting" increase in mess.



Many residents were left unhappy with the Canal and River Trust's (CRT) decision to remove dog waste bins from the canal towpath, between Devizes and Caen Hill Locks, in August.

The trust confirmed the policy is in place at many towpaths in the South West to cut "soaring costs" which, combined with falling funding, "threaten the future of the nation's historic canals." But locals claim they have since seen a "resulting mess" and have launched a petition to reinstate the bins, which had been signed by 300 people at the time of writing.

The petition, started by Rowde resident Amanda Humphreys, said: "the Caen Hill flight of locks is a huge visitor attraction and is also used by many, many locals on a daily basis. The CRT can no longer afford to provide a dog poo bin facility and the bins have been removed. The resulting mess is clear for all to see. Although in an ideal world, every dog owner would be responsible and take their bags home, they clearly don't so something needs to be done."

Town Councillor Judy Rose, who shared the petition, sympathised with the position of the CRT but was fearful of the impact on the popular footpath. She added: "I can understand the issues of continuing to provide bins, but I think the potential problem of abandoned bags, or just piles of dog poo scattered at random on the towpath, are a great deal worse. My concern is it's fine for locals to take their dog poo home, but Caen Hill is a significant tourist site and I'm not sure what visitors are supposed to do, it might be more difficult for them to dispose of."

The petition called on Devizes Town Council to take over the running of the bins, something the CRT offered them the chance to do in August, but town clerk Simon Fisher said that the town council had no plans to take on the bins due to the "inordinate amount of money" and time it would take to manage them. He emphasised that the town council already provides bins at most entrances and exits to the towpath and that it is the responsibility of dog owners to dispose of their pet's waste properly.

ROWDE CHRISTMAS MARKET



A Christmas Market will be held this year at Furlong Close on 2nd December from 12 noon to 3pm and entry is free. It looks like being a bumper event! There will be hot savoury food, tea and cake etc. and there will also be a variety of food and crafts for sale.



This event is not to be missed so hope to see you there!

FOOD HYGIENE RATINGS HANDED OUT TO WILTSHIRE VENUES

Dozens of food hygiene inspections were carried out by Wiltshire Council's Food and Safety Team officers across the month of October, with some impressive results being posted.



A dozen venues were awarded full marks following their latest food hygiene inspections.

This impressive score means that the hygiene standards in place at a business are "very good".



The Caen Hill Cafe at Lock Cottage was rated five out of five on October 24. The lowest rating given out to other Wiltshire establishments during October was three out of five.

CALLING ALL MOTHERS, FATHERS AND GRANDPARENTS!



My grandson and I had a great art and crafts session with Rachel, from 'Love to Create'.

This was a dinosaur themed art session aimed at toddlers and pre-schoolers. We learned to identify a dinosaur (models of cows, sheep etc., and dinosaurs were provided), we had to sort into groups.

The children made up salt dough then created a dinosaur footprint in it. We also tried some screen printing and painting.

I cannot recommend this enough and would encourage you to bring your child for a morning of fun, play and hands on learning. The sessions are every Wednesday morning in Rowde Village Hall. £5 includes a cup of tea or coffee for Mums and Grandmas and a snack and drink for your little one.

Call Rachel on 07894 744584

Geraldine Clisby-White

ROWDE WINDOW ADVENT CALENDAR



This initiative by Mandy Humphreys was such a great success when it was introduced last year that it is being organised again this year so do have a walk round the village and see the windows as they are revealed day by day starting from 1st December.

At time of writing, Mandy said she could do with a few more people to do a window and all you need to do is to decorate one window in your designated day and leave it up for people to see until Christmas. You can make it as simple or complicated as you like. Please message Amanda your details if you can help.

BEWARE OF COUNTERFEIT STAMPS!

With Christmas coming up and people looking to buy much larger quantities of stamps than usual, we thought you should be aware of postage stamp scams!

Counterfeit new stamps have been seen for sale on eBay at a fraction of the genuine price and a large number of people have been left out of pocket after discovering the stamps they bought were counterfeit.



Stamps without a barcode are no longer valid for use as of August, with recipients now being charged £1.10 if they don't have a scannable element. But old stamps which are no longer valid can be exchanged for new, free replacements through the Royal Mail.

Several people flagged issues with the new barcode system, saying they had to reissue letters due to unknowingly using 'faulty' stamps

All stamps sent from now on must be the new style featuring a barcode.



Several other people flagged issues with the new barcode system, with the organisers of an equine championship and some Labour councillors being stung by having to reissue communications due to unknowingly using 'faulty' stamps.

Royal Mail said new barcoded stamps will improve efficiency, and will add further 'security features'.

Counterfeit new stamps have also been seen for sale on eBay at a fraction of the genuine price – they look real but are copied from genuine stamps, so the barcodes would be flagged as 'already used'.

A Royal Mail spokesperson said: "We encourage any customer who believes they have been incorrectly surcharged to send the stamps they have remaining to us. It is important that we can investigate and determine whether the stamps are genuine, as well as understand exactly where they were purchased. Barcoded stamps have been in use since February 2022 and each barcode is unique. This uniqueness enables our machines to check the validity of stamps and to identify barcodes that have been through the network before. If one of these stamps is showing as previously used it may suggest that the stamp has been reproduced by a counterfeiter. If a stamp is identified by our machines as counterfeit, it will also be individually checked by a member of our team before the recipient is asked to pay a surcharge."

A Post Office spokesperson said it receives its stamps direct from Royal Mail, which would have to verify whether a stamp is fake or not.

FESTIVE FACTS

Festive facts to get you even more in the mood for Christmas...

1. US scientists calculated that Santa would have to visit 822 homes a second to deliver all the world's presents on Christmas Eve, travelling at 650 miles a second.
2. ROBINS on cards came from 150 years ago when postmen wore red tunics and were named after the birds.
3. ALTHOUGH now mostly vegetarian, in Victorian times, mince pies were made with beef and spices.
4. THE tradition of putting tangerines in stockings comes from 12th-century French nuns who left socks full of fruit, nuts and tangerines at the houses of the poor.
5. CAROLS began as an old English custom called wassailing, toasting neighbours to a long life.
6. HANGING stockings out comes from the Dutch custom of leaving shoes packed with food for St Nicholas's donkeys. He would leave small gifts in return.
7. NEARLY 60 million Christmas trees are grown each year in Europe.
8. THE word Noel derives from the French expression "les bonnes nouvelles" or "the good news".
9. THE world's tallest Xmas tree at 221ft high was erected in a Washington shopping mall in 1950.
10. THE chances of a white Christmas are just 1 in 10 for England and Wales, and 1 in 6 for Scotland and Northern Ireland.
11. JAMES Pierpont's 1857 song Jingle Bells was first called One Horse Open Sleigh and was written for Thanksgiving.
12. BEFORE turkey, the traditional Christmas meal in England was a pig's head and mustard.
13. IN 1647, after the English Civil War, Oliver Cromwell banned festivities. The law wasn't lifted until 1660.
14. In 1999, residents of the state of Maine in America built the world's biggest ever snowman. He stood at 113ft tall.
15. THE first commercial Christmas cards were commissioned by civil servant Sir Henry Cole in London in 1843. Featuring a family drinking wine, one sold for £8,469 last year.
16. THE largest Christmas cracker - 45.72m long and 3.04m in diameter - was pulled in Australia in 1991.
17. JINGLE Bells was the first song broadcast from space when Gemini 6 astronauts Tom Stafford and Wally Schirra sang it on December 16, 1965.
18. SANTA has different names around the world - Kriss Kringle in Germany, Le Befana in Italy, Pere Noel in France and Deushka Moroz (Grandfather Frost) in Russia.
19. THE bestselling Xmas single ever is Bing Crosby's White Christmas, shifting over 50million copies worldwide since 1942.
20. IN Britain, the best-selling festive single is Band Aid's 1984 track, Do They Know It's Christmas?, which sold 3.5million copies. Wham! is next in the same year with Last Christmas, selling 1.4million.
21. CHRISTMAS pudding was originally a soup made with raisins and wine.
22. LONDON sweetmaker Tom Smith created the first Christmas crackers in 1847, based on the sweet wrapper design.
23. BOXING Day gets its name from all the money collected in church alms-boxes for the poor.
24. KISSING under the mistletoe is thought to spring from Frigga, the Norse goddess of love, who was associated with the plant.
25. THE Beatles hold the record for most Xmas number 1 singles, topping the charts in 1963, 65 and 67.
26. THE highest-grossing festive movie is 2000's How The Grinch Stole Christmas, which has raked in £175m so far.
27. THERE are 13 Santas in Iceland, each leaving a gift for children. They come down from the mountain one by one, starting on December 12 and have names like Spoon Licker, Door Sniffer and Meat Hook.
28. RUDOLPH the red-nosed reindeer was invented for a US firm's Christmas promotion in 1938.
29. THE first Christmas celebrated in Britain is thought to have been in York in 521AD.
30. IN Greece, Italy, Spain and Germany, workers get a Christmas bonus of one month's salary by law.
31. If you received all of the gifts listed in "The Twelve Days of Christmas" song, you would receive 364 presents!

PHOTO MEMORIES

After cleaning out a relative's house Peter Hood came across some very old postcards. I have reproduced three of them here. Peter has no idea when they were produced but some had on the back 'Postage: 1/2d Stamp for inland'. If anyone can put an approximate date on any of them please let us know.

Thanks for sending them in Peter!

If anyone has any old photos of Rowde or locations near here, please send them in, Ed



...AND DID YOU KNOW?



Image - www.britishbattles.com

The Battle of Roundway Down

When you are on the top of the down, you will notice how steep the sides of the hill are. You may also hear it referred to as Oliver's Castle which hints of its links back to Oliver Cromwell and the English Civil War. On 13th July 1643, a great battle of the Civil War was fought in this landscape, where the Royalists were victorious over the Parliamentarians. In their panic, many Parliamentarians fled on horseback. Not realising how steep the hill was, many galloped straight over the edge to their deaths. As you walk around

the hill, try to imagine what it must have been like on that day. I like to think that the landscape has not changed much since that day. There are a few signs dotted around the hill which fill you in on the Civil War history of the site.

This major natural landmark near Rowde is a chalk hill on the west flank of the North Wessex Downs. Like most of the summits in the region Roundway Hill has lots of signs of prehistoric activity. It's easy to detect the strange furrows in the covert, which are Iron Age earthworks more than 2,000 years old.



Canal Boat Rental

From the Wharf below
Caen Hill Locks

www.foxhangers.co.uk

Choose from our fleet of 14 modern narrowboats, all built new at Foxhangers

Visit our website for complete details of our

Weekend Breaks

Midweek breaks

Weekly Breaks

More to Foxhangers than boat hire!

Bespoke boat building/Re-fits/Painting

All aspects of boat engineering

Chandlery

Tel: 01380 828795

4 self-catering units and a campsite
available at Lower Foxhangers
Visit www.foxhangers.com for details

WE NEED YOU!

Do you have some news to share or just have something to say about the village?

If you can contribute to the content of your Rowde Village News in any way or would like to give us feedback (good or bad) or discuss any magazine issues then please contact:

Alan Watters on 01380 724788 or by email at watters.alan@gmail.com

or **Suzan Jackett** on 01380 729791 or by email at suzijj@rocketmail.com

DISCLAIMER

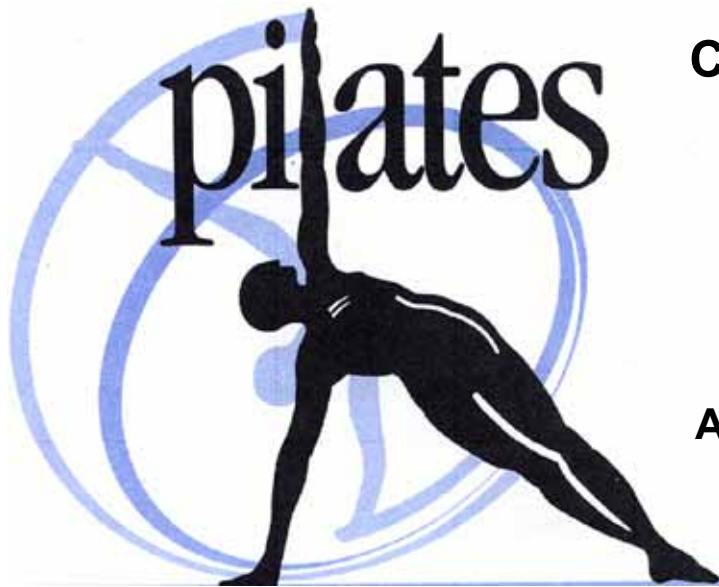
Please note that the information given and views expressed in this magazine are generally as supplied by the contributors. Our personal comments may sometimes be expressed in the editorial on page 3 and if our views are given elsewhere, they will be credited as so. In addition, much of the local news items is sourced directly from other publications and the internet. We therefore apologise for any inaccuracies published but regrettably we have no control over this possibility happening. We will however publish corrections notified to us as soon as possible.

Alan Watters, Editor

Magazine Submission Deadlines for 2024 (bi-monthly)

**15th January, 15th March, 15th May,
15th July, 15th September, 15th November**

Move.Every.Day.



Currently running classes:

Improvers & Intermediates

Mondays @ 6.00 pm

Tuesdays @ 6.30 pm

All @ Rowdefield Farm, Rowde

(just outside Devizes)

For any enquiries, including new Beginners classes

email suzijj@rocketmail.com Tel: 01380 729791

find me on INSTAGRAM: [med.pilates](https://www.instagram.com/med.pilates) or FB: Move Every Day Pilates

YOUR PCC PHILIP WILKINSON

Two years ago, I and the other four PCCs in the south west agreed to collaborate with our respective forces to target county lines drug networks, along with the anti-social behaviour drugs bring to local communities.

Operation Scorpion was born. There have been six, co-ordinated, regional crackdowns since where all five forces: Wiltshire, Avon & Somerset, Gloucester, Dorset and Devon & Cornwall have focused on preventative, educational, activities or targeted a particular section of the illegal drug network.

The latest Scorpion results, from Monday 9 October to Sunday 15 October, achieved the following results from across the region included: 94 arrests made, more than £73,000 cash seized, Class A drugs (cocaine and heroin) valued at over £90,000 and Class B drugs (cannabis) valued at over £155,000 seized, 62 people safeguarded, five dealer lines disrupted, weapons seized included a crossbow, several knives, and a samurai sword removed from our streets, and numerous drug-related assets seized including Rolex watches, cars, laptops, and mobile phones.

Operation Scorpion depends largely on the intelligence and information that you, our residents provide directly to us or indirectly through CrimeStoppers. So please keep that information flowing.

We are also in the process of developing another south west collaboration to tackle those organised crime gangs operating in the countryside - Operation Ragwort – to tackle rural crime with the same focus on intelligence to disrupt and enforce.

The combined efforts of working together with partners is clear and we will be continuing with this approach across all areas of tackling crime and violence.

More community groups receive grants through the PCC's Community Action Fund

More community groups that run youth-based projects and tackle issues such as homelessness, drug use and domestic abuse have received funding through the second round of the Police and Crime Commissioner's Community Action Fund.

Applications for funding were considered by the OPCC decision making panel earlier this month, with the help of Wiltshire Community Foundation, which has co-ordinated the grant.

PCC Philip Wilkinson said: "PCC Philip Wilkinson said: "I was pleased to see so many applications from youth based community groups, some of which provide alternative pathways to young people involved in the criminal justice system, as well as providing preventative measures for those at risk of following in the same footsteps. While others offer a broad range of activities for all young people, including open accessed youth clubs and workshops.

"I'm looking forward to seeing these projects develop and visiting as many of the groups as I can to see their great work in action and how they are actively contributing to their communities and making Wiltshire safer.

"Groups can still apply to be considered in the second round of funding, so I would encourage any community groups who haven't yet visited the fund page to do so. There you can read over the full eligibility criteria and get your application in."

The following groups were all selected for funding:

The Amber Foundation - £5,000

Amber supports young homeless and unemployed people (aged 16-30) in crisis, providing them with a temporary home, a programme of support, and the space that they need to transform their lives. Funding is towards staffing costs for their service in Trowbridge.

Salisbury Women's Refuge - £5,000

Salisbury Women's Refuge is part of the national network of women's refuges providing accommodation for up to 12 women and 16 children who are victims of domestic violence. The grant would contribute to core costs and help them continue to provide this accommodation.

SMASH - £5,000

SMASH is an established youth mentoring service in Swindon. Funding will contribute to towards a new detached youth work project that will take their mentoring expertise onto the streets.

Wiltshire Bobby Van Trust - £2,000

Wiltshire Bobby Van Trust works with Wiltshire Police to provide a home security service for older and vulnerable people across the county. Funding is towards a new scheme to provide alert bands/GPS trackers to improve safety for people living with dementia.

RISE Trust - £5,000

RISE Youth, based in Chippenham, provides open access youth clubs, targeted youth clubs and detached youthwork in North Wiltshire. Funding is towards running costs of their Calne youth club sessions.

Wiltshire Youth for Christ - £5,000

Wiltshire Youth for Christ (WYFC) is a small, faith-based youth charity operating in six towns across the north of Wiltshire. They aim to provide bespoke support, opportunities and agency for all young people of school age. Funding will contribute towards the costs of delivering their school-based mentoring project and detached community work, including the Roots and Shoots programme.

Willows Counselling - £5,000

Willow's provides subsidised counselling services in Swindon for people who are unable to cover the cost of counselling from other private sources. Funding is towards the running costs of their stabilisation courses particularly for those who have experienced domestic abuse and trauma.

Fiona Oliver, joint Chief Executive of Wiltshire Community Foundation said: "We are delighted to be working with the Office of Police and Crime Commissioner to deliver their Community Action Fund Grants. The programme is supporting charities and voluntary groups to undertake projects which will help to create stronger, safer and more resilient communities which fits perfectly with our vision of seeing more people thrive across our Wiltshire and Swindon."

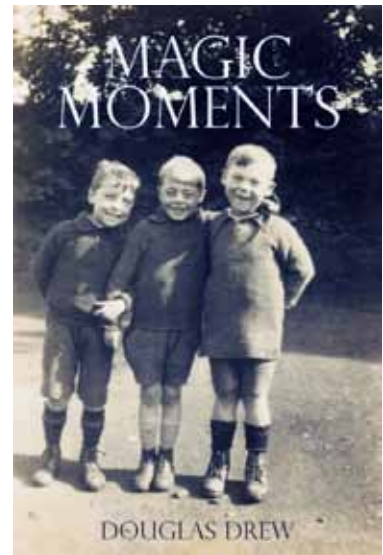
Any applications which were submitted after the cut-off point of Friday 21 July 2023 will be considered in the next round of funding.



LOOKING BACK - 12 YEARS AGO

'Magic Moments' by Rowde's Douglas Drew. This great book centres around Rowde and we promoted it in the Rowde Village News 12 years ago. I recently did a little searching online and found that it is still available to order from www.lulu.com and now priced at just £4.20. If you are fairly new to the village or you missed it back then, I would say it is must for your bookshelf, especially if you live in Rowde!

This is a review from the website: "I made a start on Douglas Drew's book just yesterday and I quickly found it was difficult to put down. I must say that it is an absolute joy to read about Douglas's life, from his starting school through to his working and courting days in Rowde then on to his life during and after the war and ending with the tragic loss of his beloved wife Hazel. At one point I laughed and cried at the same time. 'Magic Moments' is full of interesting, emotional, heartbreaking and humorous true stories and Douglas's village (Rowde) and the surrounding area of South West England is the main geographical focus of the book. Anyone who lives in, or has ever had any association with the area will love this book – a must for Christmas!"



LAURA MAYES YOUR WILTSHIRE COUNCILLOR FOR ROWDE



**Please contact me if you have any Council issues including:
Planning, Housing, Education, Highways (potholes, road schemes, speeding), Fly tipping and waste, Adult Social Care.**

I am here to offer advice and support so please get in touch:

Email: Laura.Mayes@wiltshire.gov.uk Tel: 07855 819343

Facebook: Laura Mayes – for Bromham, Rowde and Roundway

Charles S. Winchcombe & Son
INDEPENDENT FAMILY FUNERAL DIRECTORS & MEMORIAL CRAFTSMEN
Est. 1932



- Longest established
- Family owned and run
- Qualified and Licensed
- Available 24 hours a day
- Each funeral personalised
- Pre-paid funeral plans
- Craftsman made memorials



01380 722500 Winchcombe House, 37 New Park Street, Devizes, SN10 1DT www.wiltshirefunerals.co.uk



FARM FRESH LOCAL PRODUCE

We only source the best local products from our own farm and local producers, all bursting with flavour and reasonably priced

Poulshot Lodge Farm, Poulshot, Devizes, SN10 1RQ

Tel- 01380 827202

Open Tuesday – Friday 10am-5pm, Saturday 9am-4pm

For more information, to follow our blog or subscribe to our newsletter visit

www.poulshotlodgefarm.co.uk

find us on Facebook & Instagram as well



@poulshotlodgefarm

The G&D Winter Events

St Matthews Carol Service & G&D Supper

Join us on Sunday 17th December

For the Annual village Carols at St Matthews Church.

Mulled wine & mince pies for everyone at 5pm on the terrace

Roast turkey with all the trimmings, cheese & Christmas pud £29.50pp

This year we will have two sittings. First seating at 4pm before the carol service & then one straight after the service. Book ASAP!

Sunday Roast at The G&D

Still proving to very popular our Sunday 3 course menu is £29.50

Main courses include roast beef, lamb, pork & ½ chicken & also 2 fish main course specials – Booking essential!!!

Christmas '23 is nearly here!

Bookings for Christmas Parties are already coming in thick & fast! The Bar area holds a table for 12 people and the Restaurant can hold up to 26 people for a private party. The G&D Christmas menu is on our website or pop into the pub and pick a menu up!

Our Christmas Menu is £39 for 3 courses.

G&D gift vouchers

G&D Gift vouchers make excellent Christmas presents!

Purchase over £100 in vouchers and receive 20% extra from us!

Valid for 6 months on food & drink. Great as gift or keep for yourself!

Christmas opening hours

Christmas Eve - Open all day (food service 12-3 & 6-9)

Christmas Day – Closed

Boxing Day – 12pm – 3pm

Tuesday 27th – Closed

NYE – Lunch closed / Open 8pm – Late (for Dinner & Drinks)

NYE 6 course Tasting Menu now on-line

Hope Santa brings what you wish for! See you here soon

Chippy & The G&D Team 01380 723 053

A Trusted, Reliable, Professional and Fully Qualified Plastering Company
Based in Devizes, Wiltshire

GET PLASTERED

Get in touch today to arrange a free no obligation Quotation



Skimming

Ceiling Repairs

Plasterboard Installation

Dot and Dab

Float and Set

Patching and Repairs

And Much More!



Marco Lowe 07436 843341

marco@getplastered.me.uk

www.getplastered.me.uk / www.facebook.com/Marcogetplastered

Modern & Traditional Designed Memorials **M J SLY**

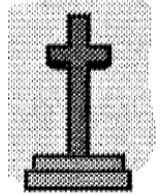
Memorial Stonemason - New Memorials
Additional Inscriptions - Restorations
Free Home Visits & Brochure

Tel: Marlborough (01672) 516797

www.mjsly.co.uk

Email: info@mjsly.co.uk

Workshop & Showroom at
Pelhams Court, London Road
Marlborough



The Board Room
Renelec House
46, New Park St,
Devizes

SN10 1DS

sycamorecentre.devizes@yahoo.co.uk
www.careconfidential.com/devizes

The
SYCAMORE
Centre 

07762 382913

A Pregnancy Choices Centre



APT GROUP SERVICES

01380 711781

www.aptgroupservicesltd.co.uk

**Approved Building and Electrical Contractors based in
Wiltshire**



Building Services
Approved CV Charger Point Installer
Electrical Services
Lighting Design
Smart Home Technology
Home Improvement
Fire Alarm and Emergency Lighting



TRUSTMARK
Government Endorsed Quality

Wiltshire Mind



Your Local Mental Health Charity

**Depressed? Anxious? Stuck? Grieving?
Stressed? Not Managing?**

COUNSELLING SERVICE

A safe, confidential and personal place to talk, and help you to move forward

A low cost counselling service in the community for all

Initial Assessment Free of Charge

For further information please contact:
Wiltshire Mind
24a High Street
Melksham
SN12 6LA
Email: counselling@wiltshiremind.co.uk
Phone 01225 706532

Reg Charity Number: 1113751 Reg Company Number: 5498430



ACTIVE PLUS



Are you age 60+?

Come and join our friendly exercise class and help maintain/improve your mobility
 (Exercises may be done seated or standing)

Mondays
2.30pm – 3.30pm
 followed by coffee/tea and a chat at Rowde Village Hall

Cost : £3.00

For more information contact:
 Yvonne 01380 723086
yve@thegablesdevizes.co.uk

Lending with Heart and Mind

Wiltshire Council fund a not-for-profit loan scheme for homeowners.*

If you have lived in your home for over 5 years and:

- Are over 60; or
- Are in receipt of State Benefits; or
- Have children under 16 living with you.


You may be eligible for a home improvement loan to keep your home warm, safe, and suitable for your needs.

Lendology CIC work in partnership with Wiltshire Council to deliver the council subsidised loan scheme. Our knowledgeable team of advisers will guide you through the process of applying.

To book a no-obligation assessment, or for more information, visit www.lendology.org.uk or call 01823 461099.

Heatherton Park Studios, Bradford on Tone, Taunton, TA4 1EU

*subject to eligibility



ATA Automotive Technician Accreditation
 Master Technician AT 1803087958

Independent
BMW, Mercedes, VW, Audi
and Skoda Specialists
at less than 1/2 dealer prices.
All Makes Mot's & Servicing.

Award Winning Knowledge Of Modern Motor Vehicles
 Champion Bright Spark 2006 - 2nd
 Auto Trade Technician 1999 - Winner

John Kyte, Director

Unit 1 Hillcroft Farm, 5 Easterton Sands, Devizes
 Wiltshire, SN10 4PY
 Call: 01380 812192 or 01380 816436
www.eastertonvehicles.com

Church Flowers

We are a friendly group of people who enjoy flower arranging. It is fun, not onerous and an opportunity to keep our Church looking as it should – in particular at the time of special festivals.

As with any village some of our members move on to live elsewhere and new families move in. There have been quite a few changes during the two years of the pandemic.

We would welcome new members and, if you might want to consider joining us, please contact: Caroline Keevil on 01380.725483 or ck@carolinekeevil.co.uk

Seasoned Logs and Kindling Available



Don't Shiver, We Deliver

Call James on
07970 781828

Beautiful Handmade Curtains, Blinds and Soft Furnishings

Free measuring and quotations
Hundreds of pattern books to browse



Caroline Flack 07982 985 925
caroline@flackformations.co.uk

JOHN STUART FUNERAL SERVICE LIMITED

18 The Britox
Devizes
Wiltshire SN10 1AJ
Tel: 01380 729459



Funerals Arranged
24 Hour Service
Private Chapel of Rest

ROWDE VILLAGE



Have you visited the village website yet? You will find it at www.rowdevillage.org
(Amongst many other things, you can see your Rowde Village News in glorious full colour!)

Please note that our Rowde Village website manager is Mandy Humphreys and she can be contacted by email at loireuncorked@me.com

Adams Renovations

Property Services



www.adamsrenovations.co.uk

For All Your Property Requirements:

Painting, Decorating (interior & exterior)

Tiling & Flooring

Paving, Decking & Patios

Guttering & Facias

Light Building Works

Repair & Renovation Work

Bathroom Specialists

Competitive prices from an honest & reliable worker.

No job too small. All areas of Wiltshire covered.

Fully insured. References available.

Email: info@adamsrenovations.co.uk

Telephone: 01380 500549

Mobile: 07725 638165



Holistic massage treatments tailored to the unique needs of each client.

I use a range of Swedish, Deep Tissue, Mobilisation and Stretching techniques to leave you feeling wonderfully relaxed, balanced and restored.

Treatments take place in a peaceful therapy room in Devizes or in the comfort of your own home.

WWW.CHARLOTTEJACKMANWELLBEING.COM

+44 (0)7812 952 362

INFO@CHARLOTTEJACKMANWELLBEING.COM

GU
GRAND UNION
FINANCIAL

Lee Short
Finance & Insurance Consultant

07359 290 017

lee.short@grandunionfinancial.co.uk

Finance

Residential Mortgages
First Time Buyer Mortgages
Buy to Let Mortgages
Commercial Mortgages
Lifetime Mortgage
Bridging Finance
Development Finance
Invoice Financing
Luxury Asset Finance
Renewable Energy Finance

Insurance

Life & Critical Illness Protection
Personal Income Protection
Buildings & Contents

Wills & Power of Attorney

GU
GRAND UNION
FINANCIAL



www.grandunionfinancial.co.uk

Trevor Hale

NPTC Certified (arb) Fully Insured

City & Guilds
NPTC



Tree Surgery

Felling ▪ Reductions ▪ Dismantles
Chipping ▪ Stumpremoval ▪ Hedging

Very Competitive Pricing

07737 934777

www.wiltshiretreesurgery.co.uk

Seend Cleeve

WHISTLEY CANINE COUNTRY CLUB



WHISTLEY CANINE COUNTRY CLUB
AND CATTERY

**Our Modern Luxury Heated Cattery
For Tiny Tigers is Now Open**

Luxury Holiday Venue For Our
Canine Friends

Spacious Suites Under-Floor Heating
Day Care Facility Inspections Welcome
Potterne Devizes

01380 738189/726330

Please see our website for more details
www.whistleykennels.co.uk

ROWDEY GOW

Locally Sourced Food
Children's Play Area

Spectacular Views
Miniature Ponies

Delicious Home Made Ice Cream
made using our own milk fresh from the farm

**FARM CAFE &
ICE CREAM PARLOUR**

Open 7 Days a Week

Taste of the West South West England GOLD 2016

Taste of the West South West England GOLD 2015

Cooked Breakfasts
Full Lunch and Snack Menu
Children's Menu Available
Ice Cream Available All Day
Home Made Cakes and Cream Teas
all our food is freshly made from local produce

Lower Farm, Devizes Road (A342), Rowde, Nr Devizes SN10 2LX
Tel: 01380 829666 | www.rowdeycow.co.uk

The Tranquil Moment

HEALTH & BEAUTY CLINIC

Unit 2 Manor House Yard, Poulshot Road, POULSHOT,
DEVIZES, WILTSHIRE SN10 1RY

TELEPHONE: 01380 828297

www.tranquilmoment.co.uk

email: tranquilmoment@live.co.uk

**Declor facials,
microdermabrasion, massage,
sports massage and injury clinic,
shrinking Violet fat loss body wraps,
CND shellac and Brisa Lite
sculpting gel nails, CND manicure
and pedicure, Apilus electrolysis,
CACI non surgical face lift,
Declor and CND stockist**

*Please call Jo at The Tranquil Moment Health and
Beauty Clinic to make an appointment*

**Call us or follow us on Facebook for up
to date offers and news**

LAURENCE PLUMB

**Interior & exterior Painting/
Decorating**

Free Estimates

Tel: 01380 728174

VILLAGE DIARY

Parish Council Meetings 2023

(All Wednesdays at 7.30pm in Village Hall unless otherwise notified)

13th December 2023, 10th January 2024, 7th February,
13th March, 17th April, 8th May, 12th June, 10th July, no
meeting in August, 11th September, 9th October, 13th
November, 11th December 2024.

Other Events

2nd December - Christmas Market - page 28 & back cover
9th & 22nd December - Party Nights - inside front cover
17th December - Carol Service and Supper - page 36
19th December - Coffee & Carols - page 16
24th December - Crib Service - page 16
Every Tuesday - St Matthew's Cafe - page 19
Every Friday - Craft, Coffee and Chat - page 19

LETTERS

CAN YOU HELP?



Can you put a shout for a tea trolley (Similar to that in the photo) which is required for the church, hoping someone will donate one or let us have it for a reasonable price. See photo of the type of thing we are looking for. Contact me on geraldene.white@btinternet.com.

POO BINS!

Dear (Ed) Alan

I have read the recent article in the Oct/Nov magazine concerning the removal of the POO bins from the Caen hill Lock flight and that walkers and cyclists have been left disgusted after the dog waste bins have been removed by the canal and river trust.

Huh!

I cannot for the life of me see why canal and river trust license holders should be held responsible for irresponsible dog owners who throw poo bags into the canal, trees or wherever and this article is completely off the rails of right thinking, surely dog owners should be held responsible for disposal of their trusty friend droppings.

I live on the canal and have been bombarded like everyone else with a large cost of living increase in license fees, mooring fees, insurance fees and any other fee that can be put up as have all households in the country.

£36000.00 a year to put in place a facility to dispose of poo is not a small sum, thousands of people all over the country get to enjoy the tow paths every year and as the article states many have achieved green flag status.

Perhaps the anger and disgust should be directed at irresponsible dog owners!

Kind regards

Captain K

arts
together

...ageing creatively

Is an award-winning local charity, seeking to reduce loneliness and isolation and in doing so improve health and well being for vulnerable elderly people through participation in the arts. We run weekly sessions in Pewsey, Marlborough and Devizes and are looking for friends and supporters to join us in fundraising, raise local awareness and help at our sessions.

COULD YOU PLEDGE SOME TIME AND HELP BY?

- **Businesses:** Adopting us as your 'Charity or Choice' or supporting us in other ways?
- **Individuals:** Help spread the word in your community, join our 'friends' scheme, run a fundraiser for us, help promote our work?
- **Groups:** We have plenty of ideas and resources to support groups involvement

For more info about our activities or being involved

liz.lavender@artstogether.co.uk / 07780860922

www.artstogether.co.uk Registered Charity 1109432



KFR

refurbishing furniture
reviving communities

Kennet Furniture Refurbiz

The Furniture and White goods charity.
To donate items or purchase please call:

01380 720722 / 720200

Unit 6B, Hopton Industrial Estate,
Devizes, SN10 2EU.



MARKET TOWN MEMORIALS

21 Forty Acres Road, Devizes SN10 3DF

Call to arrange an appointment
Monday to Saturday
Evenings available

01380 829630
07951 536529



New Memorials
Renovations
Additional Inscriptions
Bespoke Designs
Pet Stones
House Signs



Ask for a free brochure
www.markettownmemorials.co.uk
Email: danbod1981@gmail.com

BRAMM



Medals for Rowde's Children!

Rowde Parish Council have purchased Coronation medals and we still have some available.

If your child is 16 or under, lives in the parish of Rowde and hasn't already received their free medal, please message Lisa Wills on rpc.lisa.wills@gmail.com to arrange delivery.

In addition, if you are over 16 years old, you can purchase a medal for £3.50.

The Arts Society North Wiltshire

We are a friendly group who enjoy hearing about a wide range of arts based subjects. Many people from this area and beyond appreciate them – do come and join us! We meet in the Assembly Hall, Melksham from 10.30am for coffee followed by a one hour lecture at 11am.

*For more information go to
tasnorthwilts.org.uk*

December 6th:

**The White Mantle of Winter:
the Impressionists & snow**

Julian Halsby

DOG WALKER / PET CARE SERVICES

Does your dog spend too much time home alone? Do you find it hard to fit in regular daily exercise for your dog amongst the stresses of everyday life? Let me help you! I'm a dog walker with over 10 years' experience working with dogs and other animals. I have worked for guide dogs and have been a supervisor at a busy kennels, as well as years helping at veterinary practises. My passion for animals runs very deep and their care and welfare is of up most importance to me. I am experienced, offering a professional, caring and friendly service to dogs & their owners of all Breeds I am fully insured and first aid trained.

I have a Facebook page where you can see reviews and updates of your dogs on their walks.
www.facebook.com/boopeeandfriends/

My website is www.boopee-and-friends.co.uk. Feel free to message me via website or on my Facebook page. Alternatively you can call me on 07368635866.

Dolman Audio Visual

Berhills Lane Farm, Sells Green, Seend

provides

**reliable and effective repairs
& maintenance to Hi-Fi &
video equipment**

by knowledgeable and friendly technical staff
at our well-equipped service department

Please contact

Maggie or Peter

Phone/Fax: 01380 828524

Email: peterdolman@btconnect.com

St Matthew's Church, Rowde Musicians wanted!

We have a lovely piano, organ and electric keyboard at St Matthew's, but nobody to play them! Could you be that person?

We are looking for people to people to act as accompanists for church services (usually on Sunday mornings) and choir practices (currently on Friday evenings) at St Matthew's Church. It doesn't have to be a weekly commitment. Could you come along and play for us perhaps once a month?

If you'd like to learn more, please contact:

Nicola Brown (choir leader) 01380 722406
or at nicola_brown@talk21.com

T O'ROURKE

All plastering work undertaken

No job too small

FREE ESTIMATES



Contact Troy on:

01380 698993

or 07968 634689

Sudoku (difficult this month)

		2	5		7	4		
1								9
			2		1			
8								3
			7	6	9			
9				2				1
	8	5				9	3	
4		1				6		2
			4		3			

Last Month's Solution

6	9	1	3	5	2	7	8	4
2	3	4	9	8	7	5	1	6
7	8	5	6	4	1	9	2	3
1	2	3	5	6	9	4	7	8
4	5	6	2	7	8	3	9	1
8	7	9	4	1	3	6	5	2
9	4	2	1	3	5	8	6	7
5	6	8	7	2	4	1	3	9
3	1	7	8	9	6	2	4	5

Mini Sudoku (medium this month)

Insert the numbers 1 to 6 in the blank boxes so that each of the six separate areas of the puzzle and each line vertically and horizontally contains each number only once.

5		4			
			6		
1	2				6
				1	2
2		5			1
	4				

Last Month's Mini Sudoku Solution

2	5	3	6	1	4
6	1	4	5	3	2
1	3	2	4	5	6
5	4	6	3	2	1
4	2	5	1	6	3
3	6	1	2	4	5

Quick Reference List of Advertisers

Advertiser	Page
FOOD:	
Local Honey	20
Farm Fresh Local Produce	35
FUNERAL DIRECTORS ETC:	
Charles S Winchcombe & Son Ltd	34
M J Sly (Memorial Stonemasons)	37
John Stuart Funeral Services	39
D J Bewley Funeral Directors	17
MTM Memorials	42
TECHNICAL/PROFESSIONAL SERVICES:	
Dolman Audio Visual (TV & Hi Fi repairs)	43
Original Pet & People Portraits by local artist	22
Lendology.cic / Wiltshire Council	38
Mander Duffill Chartered Accountants	9
Wiltshire Buildings Record	20
Local Mobile Hairdresser	22
Hiring Now - Agincare Careers	8
Michael Williams Financial Services Ltd	13
Arts Society of North Wiltshire	43
Holistic Massage Treatments	40
Lee Short - Finance & Insurance Consultant	40
HOUSE MAINTENANCE:	
Painter & Decorator (Lawrence Plumb)	41
Plasterer (T O'Rourke)	43
Adams Renovations	40
Caroline Flack Soft Furnishings	39
Building Contractors (Gaiger Brothers)	17
KFR (used furniture and white goods)	42
Gray & Amor Ltd, Property Renovation	8
APT Building and Electrical Contractors	37
Get Plastered (Plastering Company)	37
GARDEN SERVICES:	
Tree Surgery - Trevor Hale	40
Tree Surgery - Tom Ashpole	46
JHS Garden Services	8
PUBS/RESTAURANTS/CAFES/B&Bs:	
The Rowdey Cow	2, 7, 41
The George and Dragon	36
HEALTH AND FITNESS:	
Active Plus for over 60s	38
The Tranquil Moment Health & Beauty	41
Wiltshire Mind	38
The Sycamore Centre	37
Pilates Classes	32
North Wessex Therapies	22
PETS & LIVESTOCK:	
Whistley Canine Country Club	41
Dog walking / Pet care services	43
Free Cat Neutering	20
MISCELLANEOUS:	
Wiltshire Bobby Van Trust	17
Nursery - Townsend Barn	46
Canal Boat Rental - Foxhangers	32
Car Sales, MOTs & Servicing	38
Arts Together - Ageing Creatively	42
Logs and Kindling	39

And please remember to mention where you saw the advert when you contact any of our advertisers! Ed

Quick Reference Contacts and Village Guide

Listed below in alphabetical order are the various village organisations with contact names and telephone numbers

Allotments

Please contact Rowde Parish Council

Bell Ringing

Contact Michael Cornwell
on 07388 224129
michael.cornwell@btinternet.com

Charities

Rowdeford Charity Trust
trustees@rowdefordcharity.org.uk
www.rowdefordcharity.org.uk

Church Coordinator

Benefice Administrator:
Sarah Bowler 07876142112

Church Choir

Contact Nicola Brown:
nicola_brown@talk21.com
01380 722406

Church Wardens - vacant

Doctor

For list of doctors contact the
Health Commission, Pans Lane,
Devizes, Tel: 0300 111 5717

Football

John Dalley, Tel: 727094

Footpaths

Please contact Rowde Parish
Council

Garage

Slades of Devizes Tel: 727755

Hospitals

Devizes Community Hospital
Tel: 723511
Chippenham Community Hospital
Tel: 01249 447100
Trowbridge Community Hospital
Tel: 01225 711300

Ladies Club

Held in Village Hall and meet at
various dates in the month at 2.30pm.
Mrs Di Buckland, Tel: 723049

Local Councils

Wiltshire Council
Tel: 0300 4560100
Devizes Town Council 722160

Neighbourhood Police Team

Jo Newbury Rural Beat Manager
PCSO Georgina Dodd
Ring 101
Google devizes npt to contact the
team on
www.wiltsmessaging.co.uk>devizes

Parish Council

Chair - **Lisa Wills**
Tel: **01380 730078**
Clerk - Mrs Rebekah Jeffries
Tel: 07752 724096

Playing Fields

For playing field bookings
please contact the Parish
Council Clerk on 01380 501919
rowdeparishcouncil@gmail.com

Police

Devizes Police Tel: 101

Pubs/Restaurants

Cross Keys, currently for sale
George & Dragon, Tel: 723053
Rowdey Cow Cafe, Tel: 829666

Rifle Club

Practice Wednesdays, Matches
Thursdays in Village Hall.
Laurence Plumb, Tel: 728174

Roads/Pavements

'My Wiltshire App or 03004560100

Rowde Court Studios

Ann Swan, Tel: 01380 724788
Alan Watters, Tel: 07886870053

Rowde Village News

Alan Watters, Tel: 01380 724788 or
07886870053 watters.alan@gmail.com

Rowde Village Hall

Enquiries - Tel: 07926952631
Bookings - 722497 (after 6 pm)

Rowde C of E Primary Academy

High Street, Rowde SN10 2ND
Head teacher 723991

Silverwood School

Head Teacher
Tel: 850309

Agincare at Furlong Close

Tel: 721309

Church Flowers

Caroline Keevil
ck@carolinekeevil.co.uk
Tel: 725483
Flowers for all occasions,
Weddings, Funerals & Anniversaries

TAXI

R H Reeves 01380 725072
J Dalley 07592 063789

Toddler Group

Village Hall Thursdays 9.30-11.30

Tuesday Afternoon Club (60s+)

Held in Village Hall first Tuesday in
the month at 2.30 pm.
Mrs D Ellis, Tel: 722655

Veterinary Surgeries

Estcourt - Tel: 723687
McQueens - Tel: 728505
The Paddock - Tel: 813202

Website

www.rowdevillage.org
rowdeparishcouncil@gmail.com
or contact Mandy Humphreys by
email at loireuncorked@me.com

Youth Club

Josh Wills
rpc.joshwills@gmail.com



TOWNSEND BARN NURSERY POULSHOT



For pre-school children age 0-5 years
Open all year from 8am - 6pm

The Nursery makes full use of its rural setting, and focuses on outdoor play as well as indoor activities. Home cooked food provided.

Children's gardens & greenhouse | Vegetable plot
Tennis court | Nature garden | Outdoor wood oven
Swimming with Parents | Sandpit | Outings & Trips

For further details please contact:
01380 828141 / 07976 899946

www.townsendbarnnursery.co.uk

Tom Ashpole TREE SURGERY

All Aspects of Tree
Surgery Covered



Including Hedgework And Stumpgrinding
NPTC certified, Cert.Arb (RFS) Fully Insured

Tel 01380 699473 Mob 07929 898544

Email: enquiries@wiltshiretreecare.co.uk

Web: www.wiltshiretreecare.co.uk



BECOME A COUNCILLOR FOR ROWDE PARISH COUNCIL

It is your village, your community, your voice

Be part of the team that works towards improving the quality of life in Rowde, whether it is maintaining the sports fields or allotments; creating new footpaths or providing additional waste bins. You can have an impact on your immediate environment.

If you would like to become a Parish Councillor, please contact the Clerk.

Represent your local
community

Help us to improve
the surroundings
and amenities in our
village

Comment on local
planning
applications &
decide how your
precept money is
spent

No experience is
necessary and
training will be
provided.

ROWDE PARISH COUNCIL

Rebekah Jeffries (Clerk)
rowdeparishcouncil@gmail.com
tel: 07752 724096,
rowdevillage.org

Meetings: Every second
Wednesday of the month
7.30pm in the Village Hall.



*Saturday
2nd December*

12.00-3.00

*Craft and Food
Christmas
Market*

*Furlong Close
Rowde S N10 2TQ
Free Entry*