

Rowde Village News



August/September 2023

**The BIG
Summer Fête at
Furlong Close**

FREE ENTRY

**12th August
2.30pm to 5pm**

EVERYONE WELCOME

WHEELCHAIR ACCESSIBLE

Devizes Town Band

Coconut Shy

BBQ

Tea/coffee and cakes

Cakes to take home

Bouncy Castle

Guess name of toy

Dog Show

Balloonitude

Slimming World

Rowdey Cow Ice Cream

Face Painting

**Guess number of
sweets in jar**

Tombola

Pin tail on donkey

Treasure Hunt

Punch and Judy

Biscuit Decorating

Wellie Throwing

Phoenix Twirl Stars Majorettes

White Elephant

Craft and Toy Stall

Lucky Dip

Tarot Card Reading

Horse Race

June Slip Jewellery

Splat the Rat!

Emma's Goggs

The Little Bakehouse

Coconut Shy

Clothes Pegs

**David & Nicola Brown
Honey**

Guess name of toy

Rowdey Cow Donkeys

Julie Weir Artist

Editorial

Welcome to this bumper edition of the Rowde Village News.

There are all the usual excellent reports and articles from the village's schools, clubs, societies and other organisations of course but there are also many additional interesting items covered in this issue.

But firstly I must say I am looking forward to the big Summer Fete that's to be held at Furlong Close on Saturday the 12th of August. Have a look at the poster on the opposite page to see all the wonderful things there will be to see and do on the day!

Caroline Culley, our lay minister, is shortly leaving us for pastures new and you can read about how we said our farewells on pages 24 and 25.

We sadly lost Hilda Hay, a well known and well loved Rowde resident, recently. You can read her eulogy on pages 27 and 28.

There's an update on Jakki Jenkins charity wing walk on pages 26 and 27 (and didn't she do well!) and you can read on pages 25 and 26 how the pond and all the fish at Furlong Close have been saved!

And there's an appeal for volunteers to be part of a reinstated Community Speed Watch team on page 30 and a related letter from Chris Greenwood on page 42.

Anyone interested in the Rowde of old may want to see on page 29 the superb old photographs from the late Rowde historian Barrie Barrett's collection sent in by Di Buckland.

Finally, support workers are still urgently needed at Furlong Close. Please see page 8 for details if you are interested in helping (I work part time there myself and find it very rewarding).

Mind how you go, Ed

This magazine is brought to you thanks to Jam Print Design & Printing and all the advertisers

Notice to contributors & advertisers

This magazine is generally printed in black and white in hard copy and delivered free to every home in the parish but additionally it is hosted on the **Village website** in full colour. If anyone does not wish any particular details (photographs, names, contact details, etc) to appear on the World Wide Web then they are advised not include them in their submissions, thank you.

Contributors please also note:

The deadline for articles and any changes to advertisements is the 15th of every second month.

Inserts: Due to the extra work created by inserting leaflets into the magazine and the fact that the team is already stretched, we very much regret we are unable to accept requests of this nature except in very special circumstances, when there will be a small charge.

Views expressed in this magazine are those of its contributors. They do not necessarily represent the views of the magazine's editorial team.

Contents

August/September 2023

Rowde all about it (pages 4 & 5) *News and views from village clubs and organisations*

Rowde Book Club (page 6)

Rowdey Cow News (page 7)

Rowde Primary Academy (pages 10 & 11)

Silverwood School (page 12)

Rowde Parish Council (pages 14 to 16)

The St Matthew's Pages (pages 18 & 19)

inc. Church Rotas and details of Services and Events

Fun Column & Photo Fun (page 21)

Local News (pages 24 to 28)

Photo Memories of Old Rowde (page 29)

....and did you know (page 29)

Your PCC (page 33)

Laura Mayes (page 34)

Village Diary (page 41)

Letters (page 42)

Sudoku (page 44)

Quick Reference List of Advertisers (page 44)

Quick Reference Contacts and Village Guide (page 45)

The Magazine Team

Alan Watters (Editor)

Tel: 01380 724788

Email: watters.alan@gmail.com

Suzan Jackett (Assistant Editor)

Tel: 01380 729791

Email: suzijj@rocketmail.com

Julie Baker (Advertising Manager)

Tel: 07796690413

Email: juliebaker72@yahoo.co.uk

Sue Scrusse (Distribution Manager)

Tel: 01380 729488

Email: scrusefamily@aol.com

Cover Image

The rainbow photograph on the front and back covers was taken recently looking south from Rowde Court by the editor. The amazing double rainbow was witnessed by many people in the village and I hope you agree that it is worthy of covering both front and back covers. It wasn't in view for long and I know a lot of people missed seeing it so I must thank my neighbour James for alerting me to its presence at the time or I would have missed it too!

ROWDE LADIES CLUB

For their meeting on June 6th in the Village Hall, members all brought along a plate of food to share which we enjoyed with a 'cuppa'.

The winner of the meaning of the Wiltshire Dialect words was Mrs. J. Handy and the Raffle winner was Mrs. C. Sault.

On 4th July the 'ladies' went to the Scrapstore at Bowden Hill and after looking around and purchasing a variety of different items, enjoyed a piece of cake and a cup of tea (we do like our cuppa)!

The next meeting will be on August 15th at 2.30pm in the Village Hall when there will be a talk on the Library Service. Programme for the meetings on September 12th, October 10th and November 7th to be decided.

Di Buckland

ROWDE VILLAGE HALL

The Annual General Meeting of The Village Hall was held on July 3rd. Mr. B. Cross Vice Chairman presided over the meeting and in his report stated the Committee was now down to 4 following the death of our Chairman Barry Barrett who we will all miss.

He stated that at the end of the year the gas water heater had been considered unsafe and it was decided to install a Combi boiler which would provide hot water and heating. Before this work could commence it was found that there was a water leak outside of the kitchen and as the pipes were very old new pipework was installed from the building to the meter in the road.

He continued by thanking the other members of the Committee for all their help with the

general running of the Hall, Rob for keeping the outside tidy and Mick & Darren for doing the general maintenance and concluded by thanking Mrs. Burbidge for keeping the accounts and Mrs. Rudman for auditing them.

Mrs. Burbidge then presented the approved Accounts which showed a healthy balance. Mrs. Buckland temporary Secretary reported that while the Hall was shut all Committee members were kept informed of what was happening and all decisions were made collectively. Also the Hall was visited regularly to report any faults and taps etc. turned on for safety purposes.

Election of Committee: Mr. B. Cross, Mrs. M. Burbidge, Mrs. D. Buckland, Mr. C. Stevens, Mr. C. Greenwood and Mr. J. Dalley.

The Officers will be chosen at the first Committee meeting.

Di Buckland

MONDAY CLUB NEWS

Bromham and Rowde Day Centre for Older People

See our poster on the opposite page!

To find out more about Monday Club, please contact Carol - 01380 850925 or Caroline - 07557 983940.

PLEASE REMEMBER

to mention where you saw the advert when you contact any of our advertisers!

COVER PHOTO EXPLAINED



We received this explanation of our cover photo from David Brown after it was posted on Rowde's Facebook group - "Nerd Alert - Interesting things in this great photo - the colours in the second rainbow are reversed - this is because the sunlight is reflected inside the rain drops an extra time. The area between the rainbows is darker - this is an effect where the light for the rainbows comes from. I'll creep away now." **Thanks David, fascinating info! Ed**

GOOD FOOD, GOOD COMPANY AT MONDAY CLUB



I look forward to
Mondays!



It's so friendly
and welcoming!



Never a dull
moment!

The home cooked
food is delicious!



I go home smiling!



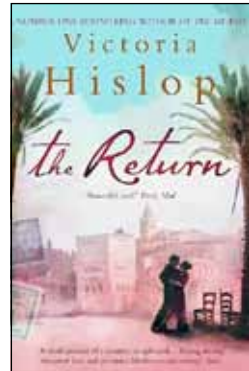
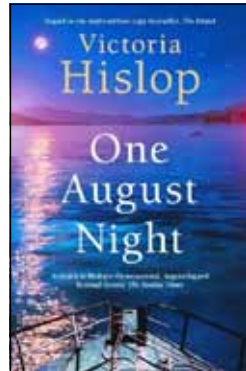
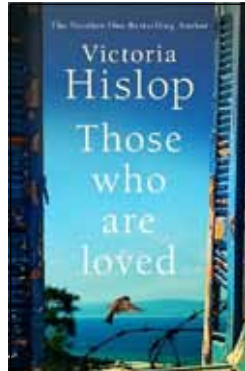
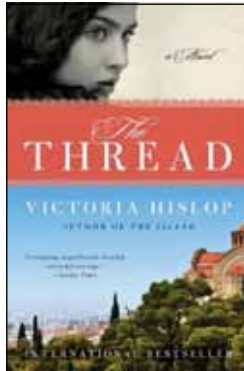
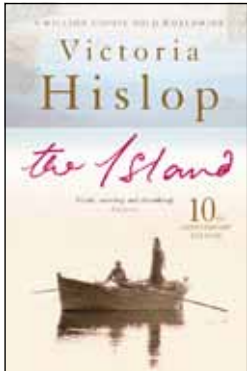
Why not come along and join us? To find out more about Monday Club, please contact :
Carol - 01380 850925 or Cathy - 01380 850555

ROWDE BOOK CLUB

Meetings are generally held on the fourth Wednesday evening of the month. Contact Ann on 01380 724788 for further info.

In May we could choose any novel by Victoria Hislop.

Whilst it was appreciated that Victoria's writing highlights the very obvious levels of research that goes into each of the books some members felt that at times they became rather too over whelming and maybe detracted from the actual 'story', however, some of us welcomed the opportunity to learn about periods of history we might not have been aware of or refreshed memories of such events.



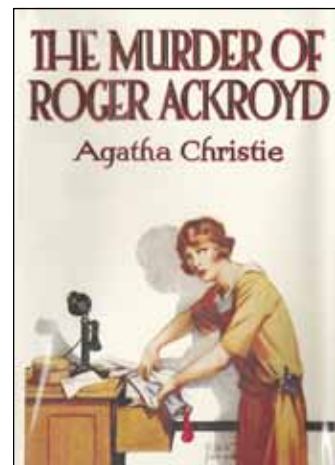
When ranked, The Island (her first book) gained a 9/10, The Thread 8/10, Those we have loved 7/10, One August Night 5/6 out of 10 (this was the book where there was the greatest disparity in views and The Return (her second book) 5/10.

It would seem her first book rather raised expectations for her future novels.

The June read was 'The Murder of Roger Ackroyd' by Agatha Christie. Everyone enjoyed this book and some members said they were surprised at how well it was written and will probably read more of Christie's books as a result, only having seen adaptations on screen or television.

We agreed that we would give it a rating of 8/10.

July was a free read.



Dolman Audio Visual

Berhills Lane Farm, Sells Green, Seend

provides

**reliable and effective repairs
& maintenance to Hi-Fi &
video equipment**

by knowledgeable and friendly technical staff
at our well-equipped service department

Please contact

Maggie or Peter

Phone/Fax: 01380 828524

Email: peterdolman@btconnect.com

T O'ROURKE

All plastering work undertaken

No job too small

FREE ESTIMATES



Contact Troy on:

01380 698993

or 07968 634689

ROWDEY COW NEWS



We are gearing up for the busy summer holiday period! Unfortunately the weather is not looking too hot at the moment but fingers crossed this will improve! We are looking forward to welcoming Jefferson's mini fair back over the summer holidays which is always popular for our younger customers! We are launching a lovely new Summer Menu next week which our chef has been busy creating and we are really excited about this!

Our ice cream trailer and cart were exceptionally popular at Heddington Steam Rally and we also attended the Bishops Cannings Football awards and a cricket match on the same weekend with our trike! We are attending some more football tournaments this weekend and are hoping the forecast of rain is incorrect! We are providing ice cream for the Townsend Barn Nursery in Poulshot tomorrow which is always nice to see the children's happy faces when they see our ice cream!



Over the summer months we are serving our homemade ice cream from the ice cream kiosk as the indoor cabinet was not coping in the heat. This has worked really well and it is less crowded for the people eating inside and the queues have been much more manageable.

When the weather improves we are hoping to host some tapas evenings which we will advertise in the café, on our website and on social media.

Thank you for your continued support and we look forward to seeing you soon!

Sue

The Function Barn has welcomed a 60th birthday party last weekend with a bbq and salad selection buffet which we got amazing feedback for and despite the rain it worked really well. We are looking forward to an anniversary celebration, a hen party and children's birthday parties over the next month which is really exciting!



GRAY & AMOR LTD.

CARPENTRY & PROPERTY RENOVATION

Covering all aspects of property renovation and maintenance.
View our range of services online or call to discuss your project.

01380 587006 / 01672 596006

info@grayandamor.co.uk www.grayandamor.co.uk



Est. 1986
Agincare
CAREERS

HIRING NOW

Various roles available

INCLUDING VACANCIES AT FURLONG CLOSE IN ROWDE!

0800 0588 515

APPLY TODAY



mander duffill

— Est 1947 —


CHARTERED ACCOUNTANTS
TAX & FINANCIAL ADVISERS

WHAT WE OFFER:

- Accountancy and Tax Services
- Tax Compliance, Planning and Advice
- International Tax Planning and Advice
- Business Sales and Acquisitions
- Company Restructuring
- Company and Business Start-ups
- Management Accounts, Bookkeeping and VAT Services
- Payroll and Auto Enrolment
- Research and Development
- Financial Services
- Investments
- Protection
- Inheritance Tax Planning
- Pensions and Retirement Planning


GET IN TOUCH:

 info@manderduffill.com

 01249 650441

 The Old Post Office
41-43 Market Place
Chippenham SN15 3HR

DEVIZES OFFICE

 01380 711441

 45 New Park Street
Devizes SN10 1DT

Offices also in Malmesbury
and London



www.manderduffill.com

NEWS FROM ROWDE PRIMARY ACADEMY

Our bright start leads to their bright future



Hello from Rowde C of E Primary Academy! We at the end of another busy school year which has been a huge success in the school's ongoing development. It has now been confirmed that, from September, I will be substantive and permanent Head Teacher and I am incredibly proud to take the position and continue to improve the school for our community. As always, we enrich our strong, progressive curriculum with lots of events, visits and visitors – only some of which we share here!

Leavers 2023

Of course, at this time, we say goodbye to our Year 6s as they move on to their secondary schools. They have made a brilliant contribution to our school, we will miss them greatly and we wish them all the best. The majority of them took part in Bikeability a couple of weeks ago, so you may have seen them cycling around the village! This year, we also say a sad goodbye to Mrs Leisha Bergqvist – Mrs Bq – who has decided to retire. She started working in Reception class at the school in January 2014 and she has been a huge part of Rowde – many of you will know and love her. We want to take this opportunity to say thank you, for her service and dedication, and we hope to see her (and maybe her Supertato costume) again very soon.



Sports Day



At the beginning of July, we had a wonderful sports day – the weather was just right! In the morning, the children took part in lots of different activities. Then, after parents joined us for a picnic lunch, we had a number of races. The children spectated and tried to earn points for their house. As you can see, Green house were the winners!



Animal visitors to Birch class



This term, Birch class (Reception and Year 1) have been learning about all different types of animals. As part of their learning, they've had visits from tadpoles, caterpillars and butterflies, a bearded dragon and a tortoise. We were also given an abandoned duck egg which we

incubated and, miraculously, it hatched into a gorgeous duckling we called Fluff! Fluff is now back with other ducklings on a farm, but the children learned so much about their lifecycle and, of course, how to care for the young.



Dance festival



At the end of June, four of our Year 1 girls went to the Forum in Bath to represent Rowde in a dance competition. Poppy, Peyton, Holly and Esmail performed a dance inspired by 'The

Owl that was Afraid of the Dark' to Firework by Katy Perry. They showed all our Rowde values, especially determination, enthusiasm and love, and they made us so very proud.

Art at Rowde

As in all curriculum areas, we've worked hard to ensure Art at Rowde is rooted in high expectations, whilst ensuring our children develop their skills and knowledge progressively. In Year 1, they have learnt all about Turner's seascapes. Over a number of weeks, they painted their background using water colours; their foreground using pastels; then added their own ships and sails using mixed media. We are blown away by the final pieces now they've been put together!



We are pleased to remain at five classes for the next academic year: Reception, Year 1/2, Year 3/4, Year 5 and Year 6. In September, we'll have just under 100 children, but we've had seven new children join us recently. It's great that word is getting out about the amazing school we are again now. As always, every day at Rowde is an open day. If you would like to see us in action, or think you could support in anyway, please get in touch: head@rowde.wilts.sch.uk

Alice Simpson, Acting Head Teacher

NEWS FROM SILVERWOOD SCHOOL - ROWDE CAMPUS

Building Community, Inspiring Learning

Executive Headteacher - Mr Sean McKeown



We wanted to update you with regards to the new school build at the Silverwood Rowde campus.

You may recall we informed you in March that there would be a delay to the opening of the additional facilities due to recent weather conditions. Wiltshire Council has been in close contact with the contractors Willmott Dixon and they have recently provided an update which means due to these ongoing delays, the new school building is now not likely to be ready to open until Summer 2024 when fitting out is complete. Wiltshire Council is working with the school to prepare intermediary arrangements that will ensure a place for all Silverwood pupils, including the new starters for this September, and we are in touch with parents who are impacted by this.

We appreciate this delay is not ideal, however we are finalising arrangements to ensure all families and pupils have the information to plan for the September term and we will endeavour to make this as smooth a process as possible.

Please see below Willmott Dixon's explanation for the delay:

"The timber frame for the building commenced as planned in August 2022, with the roof and façade coverings due to start shortly after that in early Autumn 2022. Installing these elements was critical to achieving a watertight building and enabling the internal fit-out to commence, particularly those elements susceptible to water damage.

Since the completion of the initial sections of the timber frame, we have been unable to install the roof and façade coverings due to the above-average rainfall that the project has experienced during Autumn/Winter 2022 and into Spring 2023. This rainfall has resulted in the timber frame becoming 'overly wet,' which has then required a period of time for it to dry out, and this meant we have been unable to start the roof and façade coverings until this was complete. Trying to 'rush' this process would have created potential future problems for the project and the school, which we were not prepared to risk, so taking this action was the most sensible thing to do.

Despite taking a range of measures to reduce the impact, the frame has been slow to dry to date. We have, therefore, not yet commenced the roof coverings and have made limited progress on the building façade. It is now likely the project handover will not be possible until the end of Spring 2024.

The decision to delay the project's completion has been taken with significant consideration to its impact on the school community. However, the decision has been taken to ensure we can deliver the highest quality building possible for the council, school, and community to become an excellent learning environment for many generations."

Communication Day across the school was a huge success Makaton, singing, braille, drama, digital technologies or adaptive language, all students will have the right to access learning via any communication approach, which will enable them to not only access our rich curriculum but be able to access the wider world. Mrs. Chard and her KS4 Dance Troupe stole the show with a showstopper



of a performance! KS4 were TREMENDOUS! An amazing dance and performance and signing montage!!

Prize giving for our leavers was a celebration of the pupils time at Silverwood, a tribute to how far they have come.

The Leavers Prom was a Magical Movie theme and was enjoyed by all our leavers, a magical evening!



Sidney with his letter from the King after sending his painting to the Palace.



Teresa Ollerhead



Rob Hunt DipPFS

Phone

07970 256287

Email

rob@mwfs.co.uk

Location

Devizes, Wiltshire
Home visits available



**Free initial
consultation.**

**Free financial
health check.**



Trusted Unbiased Financial Advice

Plan today for a better tomorrow

My expertise

- Investment Planning
- Inheritance Tax Planning*
- Retirement Planning
- Mortgages & Protection
- Equity Release

*Inheritance Tax Planning is not regulated
by the Financial Conduct Authority.

About me

With 30 years of experience in financial services, I'm passionate about helping individuals and families reach their financial goals. I prioritise building long-term relationships with my clients based on trust, integrity, and personalised advice.

My transparent, easy-to-understand guidance enables you to make informed decisions and achieve greater peace of mind. Contact me today for a fee-free consultation.

Michael Williams Financial Services Ltd, 15c Vine Street, Evesham, Worcs. WR11 4RE
Tel: 01386 422461 Web: www.mwfs.co.uk
Michael Williams Financial Services Ltd is an appointed representative of The Whitechurch Network Ltd which is authorised and regulated by the Financial Conduct Authority.
Registered in England & Wales No: 5263058

Your Parish Council

Please visit the rowdevillage.org website, the Rowde Parish Council Facebook page and the village noticeboards for a full set of minutes and confirmation of forthcoming Parish Council meetings.

If you would like to receive a hard copy of the minutes, please contact the Parish Clerk.

The Parish Clerk can be contacted by email: rowdeparishcouncil@gmail.com or on: 07752 724096

Parish Council Meetings

Since the last edition of the Rowde Village News, the Parish Council met on 14th June and 12th July 2023 for Parish Council meetings.

Wiltshire Council updates!

The 'new' **Silverwood School** will not be fully open until September 2024. The children who were due to start at the new school then will continue their schooling with their current provider until the school is ready. There will be a graduated introduction of new pupils to the school.

Proposal to build houses on land at **Sands Lane**

PL/2023/00386: a decision on the application is expected from Wiltshire Council on 11th August 2023. The applicant submitted further mitigating information, which the public were invited to comment on up until 5th July 2023. Rowde Parish Council submitted further comments to object to the application, including concerns about drainage from the site. It is felt that the archaeology of the site has been overlooked. It remains that the proposal is outside the village's permitted development boundary. The diverse ecology was noted. The field is currently used for hay making. Concerns were raised by residents that the application was out of time and should therefore have been rejected.

Narrowing footpath on Devizes Road: the Parish Council has weed killed the weeds along this path. There will be a meeting with Wiltshire Council to discuss ongoing maintenance.

Local Plan: There was a Wiltshire Council Cabinet review of the Wiltshire Local Plan on Tuesday 11th July 2023. This is the plan for how Wiltshire Council will oversee housing targets over the period up until 2038. If the Council does not make a plan, targets will be imposed by central government. The Council can be proactive with a plan and allocate appropriate sites for development. There will be a consultation period for residents from September 2023. Some areas will be designated to have a lot of development. Devizes needs to build an additional 980 houses but 936 are already committed so needs to find an additional 40 to meet the new target. The total target number of houses for Rowde to build up to 2038 is 47. It has been reduced from 67 as there are already 20 houses committed or built.

Any new build will have to be carbon neutral. There will be a more flexible approach to rural exception sites. 40% of a site development will have to supply low cost housing. Wiltshire Council has worked hard on this plan to ensure there is adequate housing to meet the need.

Residents at the meeting considered the number of houses required for Rowde to be disproportionate to the figure requested for Devizes and that the figure should be challenged. Cllr Mayes responded that there will be a consultation period on the plan for residents to express their views.

Rowde updates!

Playgrounds & Play Areas

Silverlands Play Area is being refurbished. There are a new set of swings in place. A new climbing frame, a webbed swing and rocker are also being installed.

This has been made possible by the asset transfer from Wiltshire Council to Rowde Parish Council.

Large Playing field: The Parish Council has discussed at length whether to purchase a container for use on the playing field as changing facilities. It has been agreed not to pursue this at this time. It was suggested that a playing field association should be set up again to look at the sports need and facilities required at the playing field before large sums of money are committed.

Planning

Planning Application

PL/2023/05341, Rowde Primary School, High Street, Rowde, Devizes, SN10 2ND Full planning permission to In-fill swimming pool, create new parking layout (7 extra spaces) with drop off zone and EV parking bays. Date for comments: 3/8/23. Ms. Alice Simpson, Headteacher for Rowde Primary Academy attended the Rowde Parish Council meeting on 12th July 2023.

A Simpson informed the meeting that the swimming pool has not been used for a number of years and is in a dire state of repair. It is no longer considered a safe depth for Key stage 2 pupils. There are safeguarding issues around the lack of changing room facilities. The pool is difficult and expensive to manage. The EV charging points would be available for the community to use outside of school hours.

The Chairman agreed to support the proposal to remove the swimming pool on the grounds given.

PL/2023/04009. Braeside, Bath Road, Devizes, SN10 2AP, Full planning permission: proposed student accommodation building. It was noted that the Braeside boundary crosses into the parish of Rowde. The Parish Council was fully supportive of the application and the retention of Braeside as a local outdoor education facility.

PL/2023/04363. Lower Farm, Devizes Road. Full Planning Permission: Erection of agricultural building (retrospective) and change of use to flexible commercial use (B8 & E) Full planning. Date for comments 13/7/23. The Parish Council supported the application.

PL/2023/04824 - Hard standing yard area (at Ox House) accessed off Dunkirk Hill, North West of Devizes, SN10 2LU. Full Planning Permission. Proposal: Use of an existing hard standing area for a temporary construction compound required to facilitate the installation of a new water main which will improve the water quality in Devizes town centre. Date for comments 27-07-2023. The entrance to the site is the problem, with a poor visibility splay and the yard's distance from the gate. The yard could be set back further to ensure traffic clears the entrance safely. There were concerns about vehicles with large equipment coming in and out of the site. It is estimated that there will be five movements a day. This could drastically increase. The Parish Council voted no objections to the application but with conditions. The conditions are to improve the access with a double entrance, to widen the visibility splay and to restrict the number of traffic movements in a day.

There is concern about the current use of Ox House Farm for storing and cleaning chemical toilets. This is being looked at by Wiltshire Council.

Speeding

Concern was raised by residents about speeding through the village, especially on the High Street, near to the George and Dragon. C Greenwood has volunteered to re-instate the Community Speedwatch Group. If anyone would like to be part of the Community Speedwatch Team, please contact C Greenwood through the contract pages.

The Neighbourhood Policing team have been out in the village checking for speeders.

The Parish Council will move the Speed Indicator Device to Marsh Lane, in w/c 17th July 2023.

Footpaths

A local resident is leading a footpath audit for the village to help improve accessibility. If you are out walking and spot a problem with a footpath, for example if signage is not clear or the pathway is overgrown, please can you report it to us. If you could take the "whats3words" code – it would be really helpful for us to find the exact location (link below to download the app).

<https://what3words.com/products/what3words-app>

Also (if possible), please can you include a photo with the description of work needed? It would be very helpful when deciding what tools are needed before the group set out.

Thank you for your help in keeping our footpaths accessible.

Village Appearance

Rowde was placed second in the first round Rowde of the Best Kept Village Competition this year.

Their report included the following statement: 'We really enjoyed our visit and hugely appreciate all the work that goes into submitting your entry. We felt that Rowde is actively supported by its Parish Council and resident involvement and a sound volunteering attitude. Thank you for your good map and comprehensive village report. It is excellent news to read the huge project at Silverwood School is nearly completed and of the successful saving of Furlong Close. We were very sorry to hear of your challenges with a current planning application'.

- The Parish Council will purchase a new Union flag and a new Ukrainian flag to fly on the flagpole on the Hill.

- It was asked whether a Wiltshire flag could ask be flown.

Allotments

Mark Somerville is now the Parish Council allotment representative.

If you are interest in having an allotment plot please contact the Clerk, at rowdeparishcouncil@gmail.com.

Events

The total raised from the Coronation event was: £1,333.10. The total expenditure was: £1,106.05 (entertainment cost £945). A profit of £227.05 was made. There is now £1,019.69 in the ring-fenced fund for community events.

B Zaccarelli thanked everyone who put so much effort in before the event and on the day.

Finance Update

Payments were approved for May 2023 invoices (total: £4,946.24)

- **Admin costs: £1,855.45**
- **Grounds' maintenance: £961.68**
- **Planters: £156.06**
- **Coronation event: £1,823.05 offset by income received.**
- **Donations to village groups: £150.00**

Donations to Village Groups

An interim payment of £150 was made to Rowde Village News to support the colour printing of the Coronation edition.

A further interim payment of £250 was made towards ongoing print costs. The Editor and Treasurer of the Rowde Village News attended the Parish Council meeting on 12th July 2023 to discuss the future financing of the publication. The Parish Council agreed to contribute £125 towards every issue of the Rowde Village News.

- **The Parish Council donated £200 to the Village Hall towards the cost of their new boiler.**

Payments were approved for June 2023 invoices (total: £3,117.17)

- **Admin costs: £1,866.65**
- **Grounds' maintenance: £767.77**
- **Playgrounds: £482.75**

Additional payments were approved:

Village hall £72.00

Steel to create a pedestrian barrier for the large playing field £392.96 incl. VAT

Stay Connected!

Website: Thank you to A Humphreys for managing the village website.

Facebook page: Check out the Parish Council's Facebook page for news and events.

Contacts: The Parish Clerk can be contacted at rowdeparishcouncil@gmail.com, or by telephone: 07752 724096 in office hours. The Chairman, Mr P Brown, can be contacted at p208brown@btinternet.com, 07554 311726.

My Wiltshire App

- The more reports that are logged through 'My Wiltshire', the higher the priority the issue will be given.
- It is easy to report problems like potholes, dog mess, graffiti, litter and street lighting in your area using the 'My Wiltshire' online form. Reports can be made anonymously, or you can register for free. Once you have registered, you can track the reports you have made, and receive notification once the work has been completed. The more residents report issues, the more likely we are to have them fixed.
- The 'My Wiltshire' page can be accessed through the Wiltshire Council website at: <https://www.wiltshire.gov.uk/mywilts-online-reporting>

Concerns

If you have any local concerns about footpaths, hedges, allotments, play facilities, or anything village related, we would like to hear from you. We value your input and suggestions and will try to help.

You can contact us through the Rowde Parish Council Facebook page, or by e-mail: rowdeparishcouncil@gmail.com, or by telephone: 07752 724096.

Police Matters

If you need to report a crime: Please dial 101 to report a crime and 999 in an emergency. It is possible to follow the Police on:

Twitter <https://twitter.com/wiltshirepolice>

Facebook <https://www.facebook.com/wiltshirepolice/>

Or sign up to Community Messaging <https://www.wiltsmessaging.co.uk/>

WILTSHIRE COUNCIL - Useful phone numbers

Libraries:	01225 713000	or mobile/outside Wiltshire:	01225 777234
Parking:	01380 734812	School admissions:	01225 713010
Pest control:	01380 734721	School special educational needs:	01225 718095
Planning:	01380 734812	School transport:	01225 713004
Recycling boxes - Hills Waste:	0845 6032085	Social care – adults:	0300 456 0111
Registration - Births, Deaths & Marriages:	01225 713007	Social care – children:	01225 773500
Roads & pavements (Clarence) Freephone:	0800 232323	Street care and cleaning:	01380 734849

ROWDE PARISH COUNCIL

Philip Brown	Chair/Planning	p208brown@btinternet.com	07554 311726
Lisa Wills	Vice-Chair, Social Media	rpc.lisa.wills@gmail.com	01380 730078
John Dalley	Sports & Playing Fields	jdtaxisdevizes@gmail.com	07592 063789
Pat Bryant	Planning	rpcpatbryant@outlook.com	01380 698567
Chris Stevens	Village Appearance	rpc.cstevens010@gmail.com	
Barbara Zaccarelli	Village Events	barbarazaccarelli@yahoo.com	01380 726316
Mark Somerville	Allotments, Safety	jhsgardenservices@yahoo.com	
Mandy Humphreys	Website, Social Media, Furlong Close liaison	rpc.mandy.humphreys@gmail.com	
Josh Wills	Playing fields; Youth Co-ordinator	rpc.joshwills@gmail.com	
Chris Greenwood	Neighbourhood Planning, Tree Officer, Roads & Transport	cj_g@me.com	07525 185514
Tom Humphreys	Speed Indicator Device	rpc.tomhumphreys@gmail.com	
Rebekah Jeffries	Clerk	rowdeparishcouncil@gmail.com	07752 724096

Wiltshire County Councillor for Rowde

Laura Mayes	Wiltshire Councillor	laura.mayes@wiltshire.gov.uk	
-------------	----------------------	------------------------------	--



JHS
Garden Services
Email: jhsgardenservices@yahoo.com
 Tel: Mark 07368 425618

Charles S. Winchcombe & Son

INDEPENDENT FAMILY FUNERAL DIRECTORS & MEMORIAL CRAFTSMEN
Est. 1932



- Longest established
- Family owned and run
- Qualified and Licensed
- Available 24 hours a day
- Each funeral personalised
- Pre-paid funeral plans
- Craftsman made memorials





☎ 01380 722500 📍 Winchcombe House, 37 New Park Street, Devizes, SN10 1DT 🌐 www.wiltshirefunerals.co.uk

GAIGER BROTHERS LTD

Building Contractors

6 Northgate Street, Devizes, Wiltshire SN10 1JL

Tel: (01380) 722412

Fax: (01380) 727890

The Wiltshire Bobby Van Trust



Registered Charity No 1153790

The Wiltshire Bobby Van Trust provide a Courtesy Home Security Service for elderly, vulnerable and disadvantaged people living in Wiltshire, who have become, or are at risk of becoming victims of house crime or domestic abuse.

Our operators will carry out a full security and fire risk assessment before fitting the appropriate security devices. If you are over 60 or vulnerable due to a mental or physical disability and don't feel that you have adequate home security please contact us to arrange a visit.

Tel No: 01380 861155 Email: bobbyvan@wiltshire.police.uk
www.wiltshirebobbyvan.org.uk



BEWLEY

Funeral Directors Limited

Our family are here for your family

Devizes local family funeral service EST. 1970

Three generations of experience, personal values and professional service

24 Hour Service | Home Visits | Simple or Bespoke Funerals | Pre-paid funeral plans | memorials

Devizes 01380 728008

Office & Chapel: 64 New Park Street, Devizes, SN10 1DP
Over 100 reviews at www.bewleyfunerals.com



August & September Worship in Rowde, Bromham and Sandy Lane

Services in St Matthew's, Rowde are in bold.. Services in Bromham and Sandy Lane are in

italic. Please visit our website, for the latest information on our services:

Everyone is very welcome at all our services



Date/Time	Service
July 16 10am	Trinity 6 Holy Communion, Bromham
July 23 8am 10am	Trinity 7 Holy Communion (BCP), Sandy Lane Holy Communion and farewell to Caroline, Rowde
July 30 10am 6pm	Trinity 8 Holy Communion, Bromham Devizes Deanery Choral Evensong, Rowde
August 6 8am 10am	Transfiguration Holy Communion (BCP), Rowde Holy Communion, Bromham
August 13 8am 10am	Trinity 10 Holy Communion (BCP), Sandy Lane Holy Communion, Rowde
August 20 10am	Trinity 11 Holy Communion, Bromham
August 27 8am 10am	Trinity 12 Holy Communion (BCP), Sandy Lane Holy Communion, Rowde
Sept 3 8am 10am	Trinity 13 Holy Communion (BCP), Rowde Holy Communion, Bromham
Sept 10 8am 10am	Trinity 14 Holy Communion (BCP), Sandy Lane Holy Communion, Rowde
Sept 17 10am	Trinity 15 Holy Communion, Bromham
Sept 24 8am 10am	Trinity 16 - St Matthew (Rowde Harvest) Holy Communion (BCP), Sandy Lane Holy Communion, Rowde
Oct 1 8am 10am	Trinity 17 Holy Communion (BCP), Rowde Holy Communion, Bromham

Please visit our website, for the latest information on our services: <https://www.achurchnearyou.com/church/9690/> or check the Church notice board for further information

Or contact the Administrator: Sarah Bowler
sarahbromhamandrowde@gmail.com 07876142112

Church Opening Times

The churches within our Benefice are also open for private prayer on the following days.

Rowde Church - Monday to Saturday 10am – 4pm As far as possible, will be open on Sundays.

Bromham Church - Daily between 9am and 5pm
Sandy Lane Church - Daily between 9am and 5pm

Regular Activities

Rowde Church Café on Tuesdays 10.45-12:00

Come and join us for coffee, cake and time to chat. Everyone welcome.

Craft, Coffee and Chat at St Matthew's Church, Rowde

Closed for the summer, restarting in September
Friday Afternoons 2pm – 4pm

Bring your own craft to do, or join in with our jigsaw All Welcome! No charge to enter, coffee available for a donation.

Souper Saturdays at St Matthew's, Rowde.

First Saturday of the month, 12 noon to 1pm. Come along and enjoy a choice of two soups (always at least one vegetarian choice) with a roll. Donation in aid of St Matthew's welcomed. Next dates: Saturday 5th August and 2nd September.

Growing in Faith are meeting on Wednesday evenings via Zoom. If you are interested in joining us on Zoom fortnightly on Wednesday 7:30-9pm (school term time only) please contact Ruth on ruthbray@outlook.com, so she can send you the Zoom links.

Mothers Union at St Nicolas Church, Bromham at 14.00 – 15.00 on 15.07.2023, 12.10.2023, 09.11.2023 and 14.12.2023 - Carole Myer: 01380 850706 or ed.myer@btinternet.com

Flower Arranging, Rowde: Jane Sartin j.ksartin@talktalk.net or call 01380 727446

The altar flowers are a permanent display. Anyone wishing to place fresh flowers in the church is very welcome to do so.

Choir - Rowde: Nichola Brown: nicola_brown@talk21.com 01380 722406

Bell Ringing - Rowde: Michael Cornwell: michael.cornwell@btinternet.com, 07388 224129

Choir and Bell Ringing - Bromham: Sarah Bowler: sarahbromhamandrowde@gmail.com

Open the Book - Rowde: Fran Hall: 07989758412

Contact Details

Rector: Vacant

Associate Priest: Revd Heather Smith
07702 113544 revheathersmith@gmail.com

Benefice Administrator: Sarah Bowler
07876 142112
sarahbromhamandrowde@gmail.com

Safeguarding Representative for Bromham and Rowde: Phil Bayley: 01380 859569

During the vacancy please contact:

Baptisms and weddings: Revd Heather Smith
07702113544 revheathersmith@gmail.com

Funerals: Benefice Administrator:
Sarah Bowler and Revd Heather

sarahbromhamandrowde@gmail.com
revheathersmith@gmail.com

Website: A Church Near You

<https://www.achurchnearyou.com/church/9690/>

Benefice Facebook page: Churches of Rowde and Bromham

<https://www.facebook.com/groups/439328832796693/>

St Matthew's Church, Rowde Musicians wanted!

We have a lovely piano, organ and electric keyboard at St Matthew's, but nobody to play them! Could you be that person?

We are looking for people to act as accompanists for church services (usually on Sunday mornings) and choir practices (currently on Friday evenings) at St Matthew's Church. It doesn't have to be a weekly commitment. Could you come along and play for us perhaps once a month?

If you'd like to learn more, please contact:
Nicola Brown (choir leader) 01380 722406
or at nicola_brown@talk21.com

Souper Saturdays

at St Matthew's, Rowde

First Saturday of the month

12 noon to 2pm

Come along and enjoy a choice of two soups (always at least one vegetarian choice) with a roll



Donation in aid of St Matthew's welcomed

Next dates:

Saturday 5th August

Saturday 2nd September

Tonka Bean Cafe and Bar

A cafe and bar with a Caribbean twist has enjoyed a "mad" first month after opening in a popular town centre building. Tonka Bean Cafe and Bar has opened in St Johns Street, Devizes, at what used to be The Vaults micropub. The popular venue closed last year but now former teacher Abrilli Phillip has brought new life to the town centre with a business



inspired by her Trinidadian roots. She said: "The opening was mad because it was like a party and it was heaving, and I've been really supported since. People like the building, and they liked the idea of it reopening, but I think people have looked forward to the Caribbean twist and a little difference. This is something new because we've never had a West Indian or Caribbean influence in Devizes the 16 years I've lived here, and people like the fact we have things they can't get anywhere else. It's about bringing a bit of my home to my new home."

Tonka Bean will be open primarily as a cafe from Monday to Wednesday, closing at 4pm, but will also double as a bar, staying open until 9.30pm between Thursday and Saturday.

DOG WALKER / PET CARE SERVICES

Does your dog spend too much time home alone? Do you find it hard to fit in regular daily exercise for your dog amongst the stresses of everyday life? Let me help you! I'm a dog walker with over 10 years' experience working with dogs and other animals. I have worked for guide dogs and have been a supervisor at a busy kennels, as well as years helping at veterinary practises. My passion for animals runs very deep and their care and welfare is of up most importance to me. I am experienced, offering a professional, caring and friendly service to dogs & their owners of all Breeds I am fully insured and first aid trained.

I have a Facebook page where you can see reviews and updates of your dogs on their walks.
www.facebook.com/boopeeandfriends/

My website is www.boopee-and-friends.co.uk. Feel free to message me via website or on my Facebook page. Alternatively you can call me on 07368635866.

LOCAL HONEY FOR SALE

Rowde Hall Cottage
High Street, Rowde SN10 2PL
(Opposite Cross Keys)
01380 722406
davidb.rowde@gmail.com
£5 for a 12oz jar (340g)



FREE CAT NEUTERING



Do you want to neuter your kittens and cats?



You know it's the right thing to do, and.. **we are here to help you!**

RSPCA Wiltshire Mid Branch

will pay, for a limited period, the cost of neutering and, at the same time, micro-chipping your cats and kittens if you live in **Devizes, Melksham, Westbury or Warminster** or the surrounding villages.

To apply for financial help to have your cats neutered, and, if you wish, micro-chipped at the same time, please send a blank e-mail to cnwiltsom@gmail.com
We will reply with a link to the application form.
If you prefer you can telephone 07494-240622

YOU CAN APPLY FROM 25TH FEB. UNTIL 30TH APRIL 2020



Wiltshire Mid Branch
Registered charity no. 205925

Working together to help you and your pets



Registered charity no. 203644

Wiltshire Buildings Record, a charity that has a growing and very detailed database of the county's vernacular buildings – and which is based at Chippenham's History Centre – is seeking new members.

For further details please go to www.wiltshirebuildingsrecord.org.uk/membership/
Organisations such as local history groups are charged £25 per annum, whilst individuals pay £14.

Please help us identify and study historic buildings throughout the county.



FUN COLUMN

This issue we have some clean jokes:

Q. What's the difference between in-laws and outlaws? **A. *Outlaws are wanted.***

This is my step ladder. I never knew my real ladder.

My friend asked me to help him round up his 37 sheep. **I said OK that's "40"**

I told my girlfriend she drew her eyebrows too high. She seemed surprised.

I have an EpiPen. My friend gave it to me when he was dying, it seemed very important to him that I have it.

Two clowns are eating a cannibal. One turns to the other and says "I think we got this joke wrong"

My wife told me I had to stop acting like a flamingo. So I had to put my foot down.

My friend says to me: "what rhymes with orange?" **I said: "no it doesn't"**

Q. Why did the old man fall in the well?
A. *Because he couldn't see that well.*

Q. Whatdya call a French man wearing sandals? **A. *Phillipe Phillope.***

So what if I don't know what Armageddon means? It's not the end of the world is it?

I went Bobsleighbing the other day, killed 142 Bobs!

Q. How do you get two whales in a car?
A. *Start in England and drive west.*

Wife says to her programmer husband, "Go to the store and buy a loaf of bread. If they have eggs, buy a dozen." Husband returns with 12 loaves of bread.

Q. What did the pirate say when he turned 80 years old? **A. *Aye matey!***

I couldn't figure out why the baseball kept getting larger. Then it hit me.

Two men meet on opposite sides of a river. One shouts to the other "I need you to help me get to the other side!" The other guy replies "You are on the other side!"

People in Dubai don't like the Flintstones. But people in Abu Dhabi do!

Q. If you have six oranges in one hand and eight bananas in another, what do you have?
A. *Big hands.*

PHOTO FUN

This issue we have some funny animal pics



ORIGINAL PET and PEOPLE PORTRAITS



Colour or mono portrait of a person, pet or horse by local artist Alan Watters. Original portrait, two prints and three greetings cards included in the package.

My waiting list is currently around October but a voucher can be supplied to be given as a present if required.

Call or text Alan on 07886870053 or Email watters.alan@gmail.com for more information or text/email a good photo for a quote.

Website: <https://alansfineart.com/>

ALLOTMENT VACANCIES



Are you a keen gardener who needs more space? If you are interested in renting an allotment, please contact:

Rebekah Jeffries rowdeparishcouncil@gmail.com

Tel: 01380 501919 Rowde Parish Council

Amanda Phillips Local Mobile Hairdresser

Cut & Blow Dry - £25

Gent's Cut - £15

Colours from £35 inc. cut

Highlights from £35

Perms - all inclusive £48



Phone for a quote 07889 744727

amandapagethairdesign@hotmail.com



Heather Smith
North Wessex Therapies

Change and Wellbeing Therapy

cognitive behavioural therapy - hypnotherapy - relaxation -
mindfulness - stress management

Face to face appointments now available at The Therapy Rooms, 32
New Rd, Chippenham and in Bromham

anxiety - stress - phobias - chronic pain - habits - poor sleep
life goals: career - personal life - sports

Call for a chat or email

t: 07702 113544

e: heather@northwessextherapies.com

w: www.northwessextherapies.com

Coffee Morning

at St Matthew's Church,
Rowde

Saturday 9th September
10am – 12 noon

Come and join us for a hot
drink and a piece of delicious
home made cake!



All Welcome!

Craft, Coffee and Chat

at St Matthew's Church,
Rowde

Friday Afternoons
2pm – 4pm

*Closed for a Summer
break*

Starting again
Friday 8th September

All Welcome!

No charge to enter,
coffee available for a donation

 **MTM**
MARKET TOWN MEMORIALS
21 Forty Acres Road, Devizes SN10 3DF

Call to arrange an appointment
Monday to Saturday
Evenings available
01380 829630
07951 536529

 New Memorials
Renovations
Additional Inscriptions
Bespoke Designs
Pet Stones
House Signs

Ask for a free brochure
www.markettownmemorials.co.uk
Email: danbod1981@gmail.com

 **BRAMM** 

Ploughman's Supper

in aid of St Matthew's Church

Friday 22nd September
2022

At the Village Hall, Rowde
@ 6.00pm

Traditional Ploughman's
Followed by a selection of Puddings

Raffle with lots of lovely prizes!

Please bring your own glasses and drinks

Tickets: ADULTS £10 / CHILDREN (Under 12) £5
Must be bought in advance please!

Please contact Nicola Brown
01380 722406



Kennet Furniture Refurbiz

The Furniture and White goods charity.

To donate items or purchase please call:

01380 720722 / 720200

Unit 6B, Hopton Industrial Estate,
Devizes, SN10 2EU.

Local News



CLAPPING FOR SWEET CAROLINE!

Caroline Culley is a Licensed Lay Minister who has been serving in Bromham and Rowde Churches for five years. Unfortunately for us, she is moving away from our parishes.

She has led many Sunday Services and taken many funeral services too during that time. She has also been responsible for the Monday Club, which brings elderly folks together from Rowde and Bromham to share lunch and companionship.

Ten years ago Caroline started St Matthew's cafe on Tuesday mornings. After a while our villagers discovered that she was baking and serving very wonderful cakes. The late Betty Plumb and Hilda Hay loved to come for a chat and newcomers to the village have found new friendships. There is also a children's corner, so sometimes mothers (and grandmothers) like to come for a cuppa and a chat too.





As July 18th was her last Tuesday at the cafe, Caroline was presented with a card and small gift to thank her for pioneering a successful and regular community event. We will miss her very much.

However, we are determined to carry on. There is now a rota for bringing cakes, so if anyone wants to get involved, now is a good time. Also, if you would just like to pop in one Tuesday morning, you can be sure of a warm welcome.

On Sunday July 23rd Caroline was thanked by the congregation and presented with flowers and a gift by the Benefice.



Caroline will be missed for her quiet and sincere work in our villages. She is someone to be relied on to be where she is needed. Always having time to listen and care. We all want to wish her well in the future.

FURLONG FISH SAVED!



There's a good sized fish pond in Furlong Close and many of the residents love sitting on the adjacent bench and watching the fish. However, in recent years and especially since Covid struck, the condition of the pond and subsequently the health of the fish, had declined to such an extent that the water was becoming black and stagnant, the fish could not be seen and one or two of them had died. Earlier this year the ancient pump and filtration equipment (found later to be over 25 years old) had become so inefficient that it was struggling to function and the waterfall had first slowed to a trickle then stopped flowing altogether.

I feed and look after the fish as best I can but, not having any funding in place for the upkeep of the pond, I decided to have a go at crowdfunding. Amazingly, due to local social media and the amazing generosity of the

people of Rowde and the friends and families of residents, a fantastic £1225 was raised!

Next step was to get a pond specialist company along to quote for the work to clean out the pond and replace all the equipment. Daniel from Aqua Magic & Magic Landscapes came along and his quote was over £1400 but after appealing to his better nature he offered to do the work for the amount we had raised.

I am pleased to say that the pond has now been completely rejuvenated, the waterfall is flowing again and as you can see in the photograph, the fish not only can be clearly seen but they also appear to be very happy indeed!

Finally, I can also say that the surrounding area of the pond is going to get a face-lift too. The newly formed Furlong Close Residents Gardening Group are going to weed, regravell and plant out the surrounding area of the pond to make visiting it a very pleasurable experience for the residents, support staff and visitors alike.

On behalf of the residents, thank you so much to everyone involved who made this possible.

Alan Watters (Ed)

BELL RINGING or CAMPANOLOGY



In an attempt to persuade readers of the RVN, that Campanology or Bell Ringing is not a Black Art, Sue Cannings has written a short article which will be appearing in the Association of Ringing Teachers magazine called 'Tower Talk'.

Sue was asked to provide the article as she was a returning ringer; hang on I'll let her tell her own story.....

I returned to bell ringing in April of this year having not rung for over 40 years. This was something I had been thinking of doing for a while and, having recently retired, felt I could make the commitment

to attend practices on a regular basis and also ring for services on Sundays.

I was somewhat apprehensive and nervous at first but I needn't have worried. (What if I drop the rope, or worse, break the stay!) Everyone has been friendly and supportive and made me feel very welcome. My teacher, Mike, wonderfully calm and patient, has enrolled me with smART ringer which gives me access to the Learning the Ropes network where there are lots of useful resources and I can track my progress. He has also encouraged me to visit other towers which I have done once so far and again, I was welcomed and encouraged to join in.

I was surprised and pleased at how quickly the basics of bell ringing have come back to me and delighted to be invited to take part in ringing to celebrate the coronation of King Charles after only four weeks! As someone said, it's just like riding a bike, you never forget!

Things have changed a lot since I first learned to ring in my mid-teens. There is much more emphasis on safety now, which is a good thing, and the learning pathway offered by Learning the Ropes together with the support of a trained teacher recognised by the Association of Ringing Teachers supports learning in a structured and logical way, enabling and encouraging ringers of all levels to improve and progress. I have also found some interesting clips and videos on YouTube which have been helpful. Of course, none of these resources were available when I learnt to ring initially and we learned by watching, and ringing with, more experienced ringers.

I would encourage anyone who is thinking of returning to bell ringing to go ahead and do it. I am thoroughly enjoying myself, making new friends and looking forward to the challenges ahead.

Ringling can be beneficial in several ways; it helps with your physical fitness, it can improve your coordination skills and it may provide a slight mental challenge as you progress through the different stages and it is a social environment.

Michael Cornwell

WING WALK FOR WILTSHIRE AIR AMBULANCE (UPDATE)

Well! What can I say!! What an amazing experience!!! So, Wing walk took place on Thursday 6th July at Rendcombe airfield near Cirencester. There was three of us raising funds for Wiltshire Air Ambulance. Between the three of us we raised £3000. My total was just shy of £1000.

The other two hadn't done a wing walk before so I let them go first as not to scare them!!



me know we were about to start the loops. It was such a weird experience! Seeing the earth upside down!!! I completed 3 loop the loops, one 180mph straight dive down, 3 barrel rolls and a couple of twists. I can't describe what I was feeling, it was just a total wow moment! I was in the air for about 15 minutes. On landing I burst into tears as I couldn't believe that I had actually done it! Lots of hugs from my friends that acted as my ground support!!! I so wanted to go up again!!!! Yes, you've guessed it... Have put my name forward for next year... This time it will be formation flying with two planes!!! Lots of loops and crossovers etc!!

A big thank you to all the people of Rowde who donated and helped me achieve my target.



I've attached a couple of pics. It's such a shame you can't see the 360 Deg Wing video Camera footage!!!

I can't sit still now, I have a fire walk booked in November for Dorothy House so watch this space!

Jakki Jenkins

I was very relaxed when it was my turn! The only thing I was worried about was how cold I would get!!

Over 5 minutes we climbed to about 3500 feet before David the pilot wiggled the wings to let



HILDA HAY EULOGY



On 26th June Hilda's family asked Chris Wheeler to give her Eulogy:

My name is Chris Wheeler and I have known Hilda all of my life. Hilda's family have asked me to give the Eulogy here today, and it is both an honour and a privilege to do so.

I will always remember Hilda as a kind, unassuming and hard working lady who always showed a genuine interest in others. I'll remember the happy times and fun that we had, and all the banter between myself, Hilda and her great friend Odette.

Now I'm going to read from the family, their memories of Mum.

My Dear Sister Hilda,

We had some great times with you and Odette when you came visiting over here in Aussie land. My children and their families wrapped their arms around you both with love and joy and we loved your holidays here in Australia.

However one of the most special holidays for me was when we both met over in Las Vegas for a few weeks with my son Alan and his family! We were both out of our own homes and comfort zone so we could be crazy!! And that we did, we certainly had a lot of laughs and saw sights that we would never otherwise have done.

Yes we were always good buddies and I will sorely miss our fortnightly "chin wags" catching up on our goings on and reliving all those good times we had.

I will miss you so very much until we meet again.

Your loving Sister Edna

Our beloved Auntie Hilda,

We loved every minute of the time that we had to spend with you here in Australia, in England and especially Paris! Some of our more memorable moments we would like to share with everyone.

On one of your earliest trips to Australia you proceeded to tell us that you could make us banana splits, skin on and cooked in the oven! We were rather disbelieving of this however we figured this could be a new trend we could go with here so away you went.

Fresh bananas, skin on, straight onto a baking tray and into the oven they went. Mum, Karlene, myself (Marion) and of course yourself happily waited for them to cook and according to you the skin would split and we would have the end result for a wonderful pudding! The laughter as we saw those bananas blacken as dark as the night sky is something we will never forget and of course we never ventured back to that recipe!

On our first trip to England, we treated you and Mum to a trip to Paris as neither of you had been there and it was on Morry and my to do list.

The long hunts to different supermarkets to find "unsugared" breads of any kind were hilarious but trying to keep you and Mum "under control" have given us memories we will never forget.

Like the night when you and Mum "snuck out" of your hotel room at 11.30 at night to walk around to the next street to get an ice cream and hot French fries! Or the morning when we were supposed to meet for breakfast at 9am but you and Mum were still fast asleep because you had been awake all night with your beds pushed together having a ball.

Morry and I thought we had adopted two new children but oh what a delight that gave us.

All of our family here have their stories they could tell with much delight and we will all miss you so very much.

All our love,

Marion, Morry and all of the family here in Australia

Editor's note: Such was the love for Hilda by her family and friends that the eulogy was exceptionally long and to print it here in full would need several more pages! However, I will try to include more of it in future issues.

CRAFT, COFFEE AND CHAT

The Craft, Coffee and Chat group meets every Friday afternoon, 2pm to 4pm, at St Matthew's church in Rowde. People are encouraged to bring their own crafts along, and these have included (so far!) knitting, various types of needlework, rug making, felting, beading, sketching, colouring and repair work on a model aeroplane.

OCCASIONAL DRIVER WANTED

Rowde and Bromham Monday Club is looking for an occasional driver to bring some of their members to and from club. They start from 9.30am and finish at 1pm. If you think it is something you might be able to help them out with from time to time, please get in touch with Caroline Culley on 07557 983940. Thank you

SPEEDWATCH



Rowde Village Community Speedwatch, which has been dormant for some time now, is hopefully going to be reactivated soon. See Chris Greenwood's letter on page 42.

PHOTO MEMORIES OF OLD ROWDE

Di Buckland has sent us three photographs of old Rowde from the late Rowde historian Barrie Barrett's collection. Do you recognise where they have been taken? They are not dated but we guess they are from around 1900.

Thanks Di



...AND DID YOU KNOW?

SHANE'S CASTLE

Shane's Castle Tollhouse, on the way from Rowde to Devizes was a former Road Toll House at Shane's Castle Gate, now Shane's Castle, Dunkirk Hill (KENNET District). The principal structure is thought to have been built for the Devizes (consolidated) Turnpike Trust in 1840-50 in the form of a lodge with crenellation. Currently domestic property with only minor changes to the original tollhouse structure on the A342, Devizes to Chippenham road. It is called Shane's Castle due to its castellations and Gothic architecture, of the early 19C. It ceased to be a toll house in 1899, but has been lived in ever since.



Rowde Community Speed Watch Team



The Parish Council has recently installed a Speed Indicator Device in the village to warn drivers of the speed that they are travelling.

Community Speed Watch is another way to tackle speeding motorists to keep our village safe.

Can you spare an hour or so a month to be part of the Community Speed Watch Team? Training will be given.

To get involved, please contact: Cllr Chris Greenwood at

cj_g@me.com or

phone 01380 722466



Remembrance Day Concert

with **The Wiltshire Police Band**
at **St Matthew's Church, Rowde**

in aid of the church and Rowde Village Hall

Saturday 11th November

time to be confirmed

Tickets £10

from

Nicola Brown 01380 722406

or 07999 923607



Canal Boat Rental

From the Wharf below
Caen Hill Locks

www.foxhangers.co.uk

Choose from our fleet of 14 modern narrowboats, all built new at Foxhangers

Visit our website for complete details of our

Weekend Breaks

Midweek breaks

Weekly Breaks

More to Foxhangers than boat hire!

Bespoke boat building/Re-fits/Painting

All aspects of boat engineering

Chandlery

Tel: 01380 828795

4 self-catering units and a campsite
available at Lower Foxhangers
Visit www.foxhangers.com for details

WE NEED YOU!

Do you have some news to share or just have something to say about the village?

If you can contribute to the content of your Rowde Village News in any way or would like to give us feedback (good or bad) or discuss any magazine issues then please contact:

Alan Watters on 01380 724788 or by email at watters.alan@gmail.com

or **Suzan Jackett** on 01380 729791 or by email at suzijj@rocketmail.com

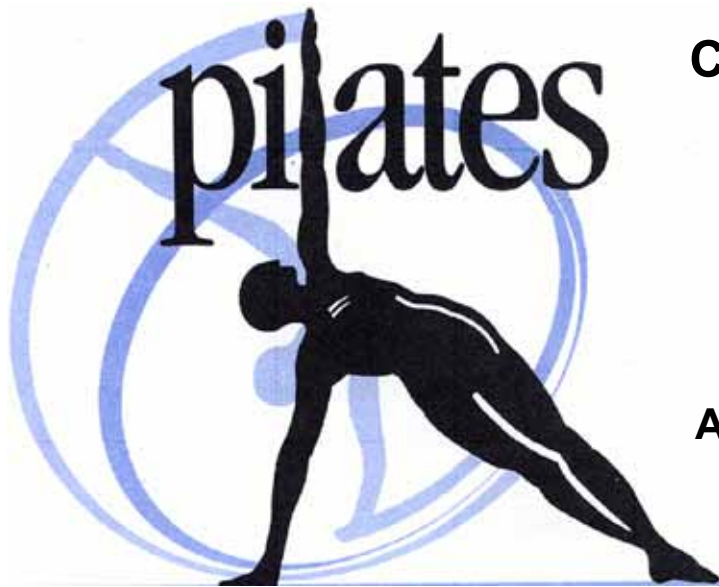
DISCLAIMER

Please note that the information given and views expressed in this magazine are generally as supplied by the contributors. Our personal comments may sometimes be expressed in the editorial on page 3 and if our views are given elsewhere, they will be credited as so. In addition, much of the local news items is sourced directly from other publications and the internet. We therefore apologise for any inaccuracies published but regrettably we have no control over this possibility happening. We will however publish corrections notified to us as soon as possible.

Alan Watters, Editor

**Magazine Submission Deadlines
for 2023 (bi-monthly)
15th September, 15th November**

Move.Every.Day.



Currently running classes:

Improvers & Intermediates

Mondays @ 6.00 pm

Tuesdays @ 6.30 pm

All @ Rowdefield Farm, Rowde

(just outside Devizes)

For any enquiries, including new Beginners classes

email suzijj@rocketmail.com Tel: 01380 729791

find me on INSTAGRAM: [med.pilates](https://www.instagram.com/med.pilates) or FB: Move Every Day Pilates

YOUR PCC PHILIP WILKINSON

Community groups tackling major issues selected for PCC funding

Nine community groups that tackle issues such as anti-social behaviour, drug and alcohol-related crimes and supporting young people have received funding through the first round of the Police and Crime Commissioner's Community Action Fund.

Applications for funding were considered by the OPCC decision making panel last week, with the help of Wiltshire Community Foundation, which has co-ordinated the grant.

PCC Philip Wilkinson said: "I'm so pleased we have had so much interest in the Community Action Fund this year. The standard of applications received during the first round of funding were very high.

"We have been able to award funding to some fantastic groups whose projects aim to tackle key deliverables within each of my Police and Crime Plan priorities. I am looking forward to visiting as many of these groups as possible to find out more about the valuable work they do and how they are actively contributing to their communities and making Wiltshire safer.

Groups can still apply to be considered in the second round of funding, so I would encourage any community groups who haven't yet visited the fund page to do so. There you can read over the full eligibility criteria and get your application in."

The following groups were all selected for funding:

Wiltshire County Football Association (£4,900)

To provide 15 weeks of the 'Roots to Shoots' programme, a diversionary session for young people in Devizes engaged in anti-social behaviour in the town. This will cover the summer holiday period where risks may be higher for the young people involved. This project tackles crimes that matter most to local communities, specifically anti-social behaviour.

Motoyouth (£3,525)

Project to run a total of five two-day sessions during school holidays for young people in Swindon at risk of offending around motor mechanics and moped riding. This project tackles crimes that matter most to local communities, including anti-social behaviour and road safety.

Developing Health & Independence (£2,500)

Organising 10 trips to provide positive and diversionary experiences for young male offenders engaged in programmes across Wiltshire. This project works to reduce violence and serious harm and tackle crimes that matter to local communities.

Waste Not Want Not (£2,500)

A furniture recycling charity based in Chippenham providing low-cost household items for people living on low incomes or in crisis. The funding is for a contribution to their Fresh Start Fund supporting people, often those needing to be rehoused due to domestic abuse with furniture and other essential household goods. This charity works to improve the experience of victims and deliver justice.

Seeds4Success (£2,500)

Contributes to regular open access youth club sessions and a new outreach project over the summer holidays to tackle recent increase in anti-social behaviour in and around Mere, Tisbury and Wilton. This group tackles crimes that matter most to local communities, specifically anti-social behaviour.

Splash - Community First (£3,384)

To develop a parents' resource pack in different languages for supporting their children and their 'Worry Monsters', a resource for helping young children across Wiltshire deal with the emotional effects of being a victim of crime. This will help improve the experience of victims and deliver justice.

Chippenham Community Hub (£3,000)

Provides a drop-in listening and information service for local people as well as a meeting space for a wide range of community groups and services. The funding will contribute towards running costs including staff and buildings plus some

specific publicity costs for developing increased support for people at risk of or experiencing fraud/scams. This project tackles crimes that matter most to local communities.

West Lavington Youth Club (£1,000)

This group reaches the more disadvantaged young people who may be more at risk of anti-social behaviour and exploitation in West and Market Lavington. The funding will contribute towards the costs of running the youth club two nights a week. The group works to tackle crimes that matter to local communities, particularly anti-social behaviour.

Devizes Opendoors (£5,000)

Supports homeless people in the Devizes area. The funding is for a contribution towards a new database system to streamline their recording and data sharing with partners, particularly benefiting their new Befriending Scheme to offer more intensive support for people to change their behaviour and circumstances. This project contributes towards tackling violence and serious harm, including domestic abuse and violence against women and girl. It also helps improve the experience of victims and deliver justice, as well as reducing re-offending.

Any applications which were submitted after the cut-off point of Friday May 12th 2023 will be considered in the second round of funding.

Significant Changes

As Wiltshire's Police and Crime Commissioner, I have welcomed some significant changes made by new Chief Constable Catherine Roper in her first four months but I do have to caution more time is needed for sustained performance improvements across all areas.

Some of the measures introduced include:

Greater police visibility – increased community patrols and focus on bringing policing to rural communities with additional mobile police stations.

Increased policing – proactive, intensified policing in communities where necessary and use of all available powers.

Focus on service – ensuring staff are moving from a back-to-basics approach and evolving to drive improvement in the service received by residents.

Putting victims first and at the heart of every police interaction.

Focus on performance – driving slimmed down governance, introducing key roles back into the policing structure, giving greater control to commanders, driving up standards.

Opening Wiltshire Police up to enable more recruitment by dismissing need for mandatory police officer degrees.

Recruiting an experienced chief officer was a conscious decision on my part to drive the improvements Wiltshire Police needed to navigate its way through the Engage process but also so it can deliver the police service residents want – and deserve.

Despite only being in post for nearly four months, CC Roper's vision for Wiltshire Police is coming to fruition.

There has been a defined focus on quality of service, on driving performance, an increased focus on victims and quality of investigations to boost outcome rates. We have seen a determined effort by the Chief to encourage leaders within the Force to take control and drive up standards and for our communities to receive more visible, proactive policing.

Of course, we are both aware the scale of work required cannot be resolved in a short amount of time. There isn't a quick fix to sustained performance improvements across all areas and time is needed. The Chief and I are also acutely aware there will be challenges ahead for some time yet but the important point is: the right steps are being taken.

However, and more importantly, I have always known Wiltshire has many dedicated and hardworking officers, staff and volunteers and now they will be able to focus on what they want – delivering a quality, frontline, policing service which delivers for its communities.

LAURA MAYES

YOUR WILTSHIRE COUNCILLOR FOR ROWDE



Please contact me if you have any Council issues including:

Planning

Housing

Education

Highways – potholes, road schemes, speeding

Fly tipping and waste

Adult Social Care

I am here to offer advice and support so please get in touch:

Email: Laura.Mayes@wiltshire.gov.uk Tel: 07855 819343

Facebook: Laura Mayes – for Bromham, Rowde and Roundway

Help shape the future of Wiltshire!

This month Wiltshire Council will consider the review of the Wiltshire Local Plan. The draft Plan sets out the vision and framework for housing, infrastructure and land for employment growth for the next 15 years. Once adopted, all planning applications will be determined against the Plan, making it the most important place-shaping document for Wiltshire.

It also identifies sites for housing and employment development until 2038. There is good news in that following further work to assess the number of homes needed, the number of planned homes in the Plan has been significantly reduced from its last iteration by almost 9,000.

A number of important policies are included in the draft plan:

- 40% of all new housing on developments of 10 homes or more to be affordable.
- Greater flexibility for rural exception sites to make it easier to provide affordable housing in villages where there is clearly identified demand.
- New developments will have to meet zero carbon standards, including energy generation such as solar panels.
- 20% biodiversity net gain for all new developments, compared to the 10% legal requirement.

- All new developments must also have cycling and walking connections.

Most of the housing development is planned to be in the major urban centres in the county, with Devizes needing to plan for only an additional 40 homes, when existing completions and commitments are taken into account. Rowde is considered to be large village in the housing plan and some development will ensure our village can continue to thrive and meet local housing needs. The developing Neighbourhood Plan will help us choose the right sites for small scale housing that will meet Rowde's needs.

This Local Plan is about providing for a choice of high-quality designed housing, including affordable homes, in the most sustainable locations; maximising development on brownfield sites; supporting town centres; and providing high quality new public open spaces.

A full consultation on the proposals is expected to take place in the Autumn so please do have your say about the plans. To read the full Cabinet report, go to:

<https://cms.wiltshire.gov.uk/ieListDocuments.aspx?CId=141&MId=14748>

**Councillor Laura Mayes,
Wiltshire Councillor for Rowde**

laura.mayes@wiltshire.gov.uk



FARM FRESH LOCAL PRODUCE

We only source the best local products from our own farm and local producers, all bursting with flavour and reasonably priced

Poulshot Lodge Farm, Poulshot, Devizes, SN10 1RQ

Tel- 01380 827202

Open Tuesday – Friday 10am-5pm, Saturday 9am-4pm

For more information, to follow our blog or subscribe to our newsletter visit

www.poulshotlodgefarm.co.uk

find us on Facebook & Instagram as well



@poulshotlodgefarm

The G&D Events

Wine Club Supper Friday 25th August 7pm

The lovely Nigel from Tetbury Wines will be hosting our next wine tasting supper with 3 white wines, 2 rose & 3 red wines...

£50pp includes wines & 3 course BMF supper
(Weather permitting we will be in the pub Terrace)

Please book ASAP to avoid missing out!

G&D Garden, Terrace, Potting Shed & Pavilion

Hopefully with the promise of some lovely long hot summer days, the garden comes into its own! The outdoor spaces will be perfect place to come and enjoy with friends (& a large Pimms or two...) and then when the sun goes down we can light the fire pit and terrace burner.

Sunday Night Quiz & Monday Night Cards

Every second Sunday the bar opens at 7.30pm and Quiz starts at 8pm

Teams of 4-6 people, Prizes for the winning team

Dates: 13th & 27th August (No quiz in September)

Every Monday night at 6.30pm it is Cards at The G&D

We alternate between Crib & CLAG, both fun games & we will teach any new beginners. Really relaxed evening and also a nice way to meet other Rowde Villagers ...Come join the fun!

Christmas is on it way! *(Can you believe it?)*

We will start taking bookings for Christmas Parties from the beginning of August! The Bar area holds a table for 12 people and the restaurant can hold up to 28 people for a private party.

The G&D Christmas menu will be on line by end of July. Our Delux Christmas Menu will cost £39 for 3 courses. Book by end October & receive free fizz on arrival...

Here comes the Sunshine! See you here soon.

Chippy & The G&D Team 01380 723 053

A Trusted, Reliable, Professional and Fully Qualified Plastering Company
Based in Devizes, Wiltshire

GET PLASTERED

Get in touch today to arrange a free no obligation Quotation



Skimming

Ceiling Repairs

Plasterboard Installation

Dot and Dab

Float and Set

Patching and Repairs

And Much More!



Marco Lowe 07436 843341

marco@getplastered.me.uk

www.getplastered.me.uk / www.facebook.com/Marcogetplastered

Modern & Traditional

Designed Memorials

M J SLY

Memorial Stonemason - New Memorials

Additional Inscriptions - Restorations

Free Home Visits & Brochure

Tel: Marlborough (01672) 516797

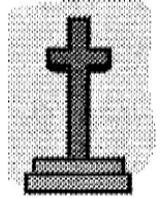
www.mjsly.co.uk

Email: info@mjsly.co.uk

Workshop & Showroom at

Pelhams Court, London Road

Marlborough



The Board Room

Renelec House

46, New Park St,

Devizes

SN10 1DS

sycamorecentre.devizes@yahoo.co.uk

www.careconfidential.com/devizes

The
SYCAMORE
Centre 

07762 382913

A Pregnancy Choices Centre



APT GROUP SERVICES

01380 711781

www.aptgroupservicesltd.co.uk

Approved Building and Electrical Contractors based in Wiltshire



Building Services
Approved CV Charger Point Installer
Electrical Services
Lighting Design
Smart Home Technology
Home Improvement
Fire Alarm and Emergency Lighting



TRUSTMARK
Government Endorsed Quality

Wiltshire Mind



Your Local Mental Health Charity

**Depressed? Anxious? Stuck? Grieving?
Stressed? Not Managing?**

COUNSELLING SERVICE

A safe, confidential and personal place to talk, and help you to move forward

A low cost counselling service in the community for all

Initial Assessment Free of Charge

For further information please contact:
Wiltshire Mind
24a High Street
Melksham
SN12 6LA
Email: counselling@wiltshiremind.co.uk
Phone 01225 706532

Reg Charity Number: 1113751 Reg Company Number: 5498430

ACTIVE PLUS



Are you age 60+?



Come and join our friendly exercise class and help maintain/improve your mobility
(Exercises may be done seated or standing)

Mondays
2.30pm – 3.30pm
followed by coffee/tea and a chat at Rowde Village Hall

Cost : £3.00

For more information contact:
Yvonne 01380 723086
yve@thegablesdevizes.co.uk



Lending with Heart and Mind

Wiltshire Council fund a not-for-profit loan scheme for homeowners.*

If you have lived in your home for over 5 years and:

- Are over 60; or
- Are in receipt of State Benefits; or
- Have children under 16 living with you.

You may be eligible for a home improvement loan to keep your home warm, safe, and suitable for your needs.

Lendology CIC work in partnership with Wiltshire Council to deliver the council subsidised loan scheme. Our knowledgeable team of advisers will guide you through the process of applying.

To book a no-obligation assessment, or for more information, visit www.lendology.org.uk or call 01823 461099.

Heatherton Park Studios, Bradford on Tone, Taunton, TA4 1EU

*subject to eligibility

Easterton Vehicles Ltd.

ATA Automotive Technician Accreditation
Master Technician AT 1803087958

**Independent
BMW, Mercedes, VW, Audi
and Skoda Specialists
at less than 1/2 dealer prices.
All Makes Mot's & Servicing.**

Award Winning Knowledge Of Modern Motor Vehicles
Champion Bright Spark 2006 - 2nd
Auto Trade Technician 1999 - Winner

John Kyte, Director

Unit 1 Hillcroft Farm, 5 Easterton Sands, Devizes
Wiltshire, SN10 4PY
Call: 01380 812192 or 01380 816436
www.eastertonvehicles.com

St Matthew's Flower Arrangers

We are a friendly group of people who enjoy flower arranging. It is fun, not onerous and an opportunity to keep our Church looking as it should – in particular at the time of special festivals.

As with any village some of our members move on to live elsewhere and new families move in. There have been quite a few changes during the two years of the pandemic.

We would welcome new members and, if you might want to consider joining us, please contact: Liz Ibbetson on 01380 720630 or

wb.ibbetson1@btinternet.com

Seasoned Logs and Kindling Available



Don't Shiver, We Deliver

Call James on
07970 781828

Beautiful Handmade Curtains, Blinds and Soft Furnishings

Free measuring and quotations
Hundreds of pattern books to browse



Caroline Flack 07982 985 925
caroline@flackformations.co.uk

JOHN STUART FUNERAL SERVICE LIMITED

18 The Britox
Devizes
Wiltshire SN10 1AJ
Tel: 01380 729459



Funerals Arranged
24 Hour Service
Private Chapel of Rest

ROWDE VILLAGE



Have you visited the village website yet? You will find it at www.rowdevillage.org
(Amongst many other things, you can see your Rowde Village News in glorious full colour!)

Please note that our Rowde Village website manager is Mandy Humphreys and she can be contacted by email at loireuncorked@me.com

Adams Renovations

Property Services



www.adamsrenovations.co.uk

For All Your Property Requirements:

Painting, Decorating (interior & exterior)

Tiling & Flooring

Paving, Decking & Patios

Guttering & Facias

Light Building Works

Repair & Renovation Work

Bathroom Specialists

Competitive prices from an honest & reliable worker.

No job too small. All areas of Wiltshire covered.

Fully insured. References available.

Email: info@adamsrenovations.co.uk

Telephone: 01380 500549

Mobile: 07725 638165

Supporting children

when a parent has had a brain injury



This booklet has been written primarily for the families and carers of a child whose parent has had a brain injury. It gives information about how children of different ages are affected by a parent having a brain injury and offers suggestions of how to talk to and support the child.

To download this **FREE BOOKLET** go to www.headway.org.uk

arts together

...ageing creatively

Is an award-winning local charity, seeking to reduce loneliness and isolation and in doing so improve health and well being for vulnerable elderly people through participation in the arts. We run weekly sessions in Pewsey, Marlborough and Devizes and are looking for friends and supporters to join us in fundraising, raise local awareness and help at our sessions.

COULD YOU PLEDGE SOME TIME AND HELP BY?

- **Businesses:** Adopting us as your 'Charity or Choice' or supporting us in other ways?
- **Individuals:** Help spread the word in your community, join our 'friends' scheme, run a fundraiser for us, help promote our work?
- **Groups:** We have plenty of ideas and resources to support groups involvement

For more info about our activities or being involved

liz.lavender@artstogether.co.uk / 07780860922

www.artstogether.co.uk Registered Charity 1109432

Trevor Hale

NPTC Certified (arb) Fully Insured

City & Guilds
NPTC



Tree Surgery

Felling ▪ Reductions ▪ Dismantles
Chipping ▪ Stumpremoval ▪ Hedging

Very Competitive Pricing

07737 934777

www.wiltshiretreesurgery.co.uk

Seend Cleeve

WHISTLEY CANINE COUNTRY CLUB



WHISTLEY CANINE COUNTRY CLUB
AND CATTERY

**Our Modern Luxury Heated Cattery
For Tiny Tigers is Now Open**

Luxury Holiday Venue For Our
Canine Friends

Spacious Suites Under-Floor Heating
Day Care Facility Inspections Welcome
Potterne Devizes

01380 738189/726330

Please see our website for more details
www.whistleykennels.co.uk

ROWDEY GOW

Locally Sourced Food
Children's Play Area

Spectacular Views
Miniature Ponies

Delicious Home Made Ice Cream
made using our own milk fresh from the farm

**FARM CAFE &
ICE CREAM PARLOUR**

Open 7 Days a Week

Taste of the West South West England GOLD 2016

Taste of the West South West England GOLD 2015

Cooked Breakfasts
Full Lunch and Snack Menu
Children's Menu Available
Ice Cream Available All Day
Home Made Cakes and Cream Teas
all our food is freshly made from local produce

Lower Farm, Devizes Road (A342), Rowde, Nr Devizes SN10 2LX
Tel: 01380 829666 | www.rowdeycow.co.uk

The Tranquil Moment

HEALTH & BEAUTY CLINIC

Unit 2 Manor House Yard, Poulshot Road, POULSHOT,
DEVIZES, WILTSHIRE SN10 1RY

TELEPHONE: 01380 828297

www.tranquilmoment.co.uk

email: tranquilmoment@live.co.uk

**Decleor facials,
microdermabrasion, massage,
sports massage and injury clinic,
shrinking Violet fat loss body wraps,
CND shellac and Brisa Lite
sculpting gel nails, CND manicure
and pedicure, Apilus electrolysis,
CACI non surgical face lift,
Decleor and CND stockist**

*Please call Jo at The Tranquil Moment Health and
Beauty Clinic to make an appointment*

**Call us or follow us on Facebook for up
to date offers and news**

LAURENCE PLUMB

**Interior & exterior Painting/
Decorating**

Free Estimates

Tel: 01380 728174

VILLAGE DIARY

Parish Council Meetings 2023

(All Wednesdays 7.30pm - venues to be confirmed)
13th September, 11th October, 8th November,
13th December.

Other Events

12th August - Summer Fête - page 2
25th August - Wine Club Supper - page 36
9th September - Coffee Morning - page 23
22nd September - Ploughman's Supper - page 23
11th November - Remembrance Day Concert - page 31
Every Tuesday - St Matthew's Cafe - page 19
Every Friday - Craft, Coffee and Chat - pages 23 & 28
First Saturday of month - Souper Saturdays - page 19

LETTERS

SPEEDWATCH!

Dear Alan,

I am endeavouring to reestablish Rowde Village Community Speedwatch, which has been dormant for some time now.

We have an urgent need to provide the police with some data relating to the number and types of vehicles that are consistently speeding through our village.

For this purpose, I am seeking volunteers for various roles within an active group, in order to provide an up to date assessment of those drivers who are persistently breaking speed limits.

We are going to need adequate information for us to deliver to Wiltshire Police, in order that they can profile frequent offenders, and hopefully re-educate them in regard to their attitude to speeding, and road safety in general.

Please could anyone interested in supporting this group contact me either at my home in Springfield Road, or by landline phone, or email.

Many thanks

Chris Greenwood.

29 Springfield Road,

01380722466

cj_g@me.com

(see also poster on page 30, Ed)

DOES HIGH STREET HOUSE EXIST?

Hello,

I hope this is not too much of a nuisance but I'm after some information.

I contacted you eight or nine years ago and sent you an article about the Stiles family of Myrtle farm in Rowde. My grandfather was Henry Robert Stiles.

I have discovered that one of his brothers, William, Cyril (known as Barlow) lived at 145, High Street. We knew it was the High Street but not the number of the house.

I was wondering if the house still exists. I can find no reference to it on any maps. But so many of the houses on the High Street have names rather than numbers.

If you can supply any information I would be very grateful.

Thanks for your time,

Robert West

Editors note: *If anyone can help with this request please get in touch with me and I will pass on the information to Robert, thanks.*



SEEND FLOWER SHOW

FLOWERS - VEGETABLES - FRUIT - HOME PRODUCE

ARTS & CRAFTS - PHOTOGRAPHY - CHILDREN'S CLASSES

Saturday 12th August 2023

Doors open for public viewing at 1pm.

Community Centre Hall, Rusty Lane, Seend, Wiltshire SN12 6NS.

Held alongside the Seend Village Fete.

A traditional village flower show open to entries from outside the parish.

Never tried before? Have a look at the show programme which will be available on our website at

seendflowershow.org.uk

Avebury stone circles and henge



Discover the largest stone circles in the world with a Stone Circle Family Trail. Separate trails for children aged 4 to 7 years and 8 to 12 years. From 26 July. Trails £1 each.

Learn to sketch like Stukeley

Pens, papers and easels provided. Tuesdays and Thursdays. Free. Find out more from the Visitor Information desk in the Avebury Barn.

Avebury landscape

Follow the trail in the Landscape Adventure booklet and learn about the Avebury World Heritage site and the work of Stukeley as you explore. From 26 July. Booklets £1 from visitor reception in the Avebury Barn.



Avebury Manor

Once home to Alexander Keiller, Avebury Manor, is a sixteenth-century manor house, with each room in the style of a different period in its history. Children can sit on the chairs, lie in a Tudor four-poster bed and even try on period costumes.

Admission details and opening times: www.nationaltrust.org.uk/avebury



Alexander Keiller Museum

The museum has a range of objects found across the Avebury World Heritage site,

and continues the celebration of Stukeley with a spotter leaflet and museum trail, taking a closer look at items on display with relevance to Stukeley and his work on Avebury.

Leaflets are free and available from the museum.

And in the Old Famyard...

Logs, planks, poles and other natural materials are provided for children to create an obstacle course to their own design, then see if they can complete the challenge they have built. From 26 July. More details from the visitor information desk is in the Avebury Barn.

Also in the Old Famyard is Circles Restaurant, for meals, snacks, cream teas and the National Trust shop, with gifts, books, plants and other treats.



In Stitches - women and needlecraft in Avebury Manor

Until 5 Nov, 11am - 5pm, free with normal admission

Find out about the lives of some of Avebury Manor's female residents through the lens of needlecraft. This new exhibition explores the women of Aveburys' historic crafts, from Tudor times to the 1920s, and the role they played at Avebury and beyond.



An exhibition of work by William Stukeley

Until 5 Nov, 10am - 5pm, free

To celebrate 300 years since antiquarian William Stukeley made fantastically detailed drawings of the Stones and village of Avebury, reproductions of several of his drawings are on display in the Avebury Barn.

Sudoku (medium this month)

	7		1	9	2		8	
		9	6		8	3		
6								9
	3	5				8	7	
				7				
		2	8		3	1		
	4							5
	6		7		1			9
	8							2

Last Month's Solution

4	1	2	9	6	3	8	7	5
7	9	3	8	5	4	1	2	6
6	8	5	7	1	2	3	9	4
8	5	7	1	2	6	9	4	3
2	6	4	5	3	9	7	8	1
1	3	9	4	7	8	5	6	2
5	2	6	3	9	7	4	1	8
3	7	8	2	4	1	6	5	9
9	4	1	6	8	5	2	3	7

Mini Sudoku (easy this month)

Insert the numbers 1 to 6 in the blank boxes so that each of the six separate areas of the puzzle and each line vertically and horizontally contains each number only once.

4		6			
			4	1	
				5	2
	2	3			1
				6	5
	5	2			

Last Month's Mini Sudoku Solution

3	1	2	4	5	6
6	4	5	3	1	2
5	3	6	2	4	1
1	2	4	5	6	3
4	6	3	1	2	5
2	5	1	6	3	4

Quick Reference List of Advertisers

Advertiser	Page
FOOD:	
Local Honey	20
Farm Fresh Local Produce	35
FUNERAL DIRECTORS ETC:	
Charles S Winchcombe & Son Ltd	16
M J Sly (Memorial Stonemasons)	37
John Stuart Funeral Services	39
D J Bewley Funeral Directors	17
MTM Memorials	23
TECHNICAL/PROFESSIONAL SERVICES:	
Dolman Audio Visual (TV & Hi Fi repairs)	6
Original Pet & People Portraits by local artist	22
Lendology.cic / Wiltshire Council	38
Mander Duffill Chartered Accountants	9
Wiltshire Buildings Record	20
Local Mobile Hairdresser	22
Agincare Careers	8
Michael Williams Financial Services Ltd	13
HOUSE MAINTENANCE:	
Painter & Decorator (Lawrence Plumb)	41
Plasterer (T O'Rourke)	6
Adams Renovations	40
Caroline Flack Soft Furnishings	39
Building Contractors (Gaiger Brothers)	17
KFR (used furniture and white goods)	23
Gray & Amor Ltd, Property Renovation	8
APT Building and Electrical Contractors	37
Get Plastered (Plastering Company)	37
GARDEN SERVICES:	
Tree Surgery - Trevor Hale	40
Tree Surgery - Tom Ashpole	46
JHS Garden Services	16
PUBS/RESTAURANTS/CAFES/B&Bs:	
The Rowdey Cow	41
The George and Dragon	36
HEALTH AND FITNESS:	
Active Plus for over 60s	38
The Tranquil Moment Health & Beauty	41
Wiltshire Mind	38
The Sycamore Centre	37
Pilates Classes	32
North Wessex Therapies	22
PETS & LIVESTOCK:	
Whistley Canine Country Club	41
Dog walking / Pet care services	20
Free Cat Neutering	20
MISCELLANEOUS:	
Wiltshire Bobby Van Trust	17
Nursery - Townsend Barn	46
Canal Boat Rental - Foxhangers	32
Car Sales, MOTs & Servicing	38
Arts Together - Ageing Creatively	40
Logs and Kindling	39

And please remember to mention where you saw the advert when you contact any of our advertisers! Ed

Quick Reference Contacts and Village Guide

Listed below in alphabetical order are the various village organisations with contact names and telephone numbers

Allotments

Please contact Rowde Parish Council

Bell Ringing

Contact Michael Cornwell on 07388 224129
michael.cornwell@btinternet.com

Bingo

Mondays 8 pm in Village Hall

Charities

Rowdeford Charity Trust
trustees@rowdefordcharity.org.uk
www.rowdefordcharity.org.uk

Church Coordinator

Benefice Administrator:
Sarah Bowler 07876142112

Church Choir

Contact Nicola Brown:
nicola_brown@talk21.com
01380 722406

Church Wardens - vacant

Doctor

For list of doctors contact the Health Commission, Pans Lane, Devizes, Tel: 0300 111 5717

Football

John Dalley, Tel: 727094

Footpaths

Please contact Rowde Parish Council

Garage

Slades of Devizes Tel: 727755

Hospitals

Devizes Community Hospital
Tel: 723511
Chippenham Community Hospital
Tel: 01249 447100
Trowbridge Community Hospital
Tel: 01225 711300

Ladies Club

Held in Village Hall on last Tuesday in the month at 8 pm.
Mrs Di Buckland, Tel: 723049

Local Councils

Wiltshire Council
Tel: 0300 4560100
Devizes Town Council 722160

Neighbourhood Police Team

Jo Newbury Rural Beat Manager
PCSO Georgina Dodd
Ring 101
Google devizes npt to contact the team on
www.wiltsmessaging.co.uk>devizes

Parish Council

Chair - **Philip Brown**
Tel: **07554 311726**
Clerk - Mrs Rebekah Jeffries
Tel: 01380 501919

Playing Fields

For playing field bookings please contact the Parish Council Clerk on 01380 501919
rowdeparishcouncil@gmail.com

Police

Devizes Police Tel: 101

Pubs/Restaurants

Cross Keys, currently for sale
George & Dragon, Tel: 723053
Rowdey Cow Cafe, Tel: 829666

Rifle Club

Practice Wednesdays, Matches Thursdays in Village Hall.
Laurence Plumb, Tel: 728174

Roads/Pavements

'My Wiltshire App or 03004560100

Rowde Court Studios

Ann Swan, Tel: 01380 724788
Alan Watters, Tel: 07886870053

Rowde Village News

Alan Watters, Tel: 01380 724788 or 07886870053 watters.alan@gmail.com

Rowde Village Hall

Enquiries - Tel: 07926952631
Bookings - 722497 (after 6 pm)

Rowde C of E Primary Academy

High Street, Rowde SN10 2ND
Head teacher 723991

Silverwood School

Head Teacher
Tel: 850309

Agincare at Furlong Close

Tel: 721309

St Matthew's Flower Guild

Liz Ibbetson, Tel: 720630
Flowers for all occasions,
Weddings, Funerals &
Anniversaries

TAXI

R H Reeves 725072
J Dalley 07592 063789

Toddler Group

Village Hall Thursdays 9.30-11.30

Tuesday Afternoon Club (60s+)

Held in Village Hall first Tuesday in the month at 2.30 pm.
Mrs D Ellis, Tel: 722655

Veterinary Surgeries

Estcourt - Tel: 723687
McQueens - Tel: 728505
The Paddock - Tel: 813202

Website

www.rowdevillage.org
rowdeparishcouncil@gmail.com
or contact Mandy Humphreys by email at loireuncorked@me.com

Youth Club

Josh Wills
rpc.joshwills@gmail.com



TOWNSEND BARN NURSERY POULSHOT



For pre-school children age 0-5 years
Open all year from 8am - 6pm

The Nursery makes full use of its rural setting, and focuses on outdoor play as well as indoor activities. Home cooked food provided.

Children's gardens & greenhouse | Vegetable plot
Tennis court | Nature garden | Outdoor wood oven
Swimming with Parents | Sandpit | Outings & Trips

For further details please contact:
01380 828141 / 07976 899946
www.townsendbarnnursery.co.uk

Tom Ashpole TREE SURGERY

All Aspects of Tree
Surgery Covered



Including Hedgework And Stumpgrinding
NPTC certified, Cert.Arb (RFS) Fully Insured

Tel 01380 699473 Mob 07929 898544

Email: enquiries@wiltshiretreecare.co.uk

Web: www.wiltshiretreecare.co.uk



Photograph taken the day the speed indicator was moved from the High Street to Marsh Lane (and while it was still functioning correctly). Note that it was indicating 49mph initially but had gone down to 42mph before the photo could be taken!

