

Rowde Village News



Rowde residents support
Ukraine relief effort

Pages 26 and 27

April/May 2022



Covid-19 support in Rowde

The group has re-activated for our extremely vulnerable neighbours.

If you are unable to collect prescriptions yourself, or arrange to have them delivered, or need shopping urgently, please contact the support group on

01380 730078 or 01380 698567

or by email at

rpc.lisa.youth@gmail.com or patabryant@live.co.uk

Alternatively, if you are able to help others, we would love to hear from you too.

ORIGINAL PET and PEOPLE PORTRAITS



Colour or mono portrait of a person or pet by local artist Alan Watters. Original portrait. Limited edition prints and/or personalised greetings cards packages also possible. Original supplied in a quality mount ready for framing.

Call or text Alan on 07886870053 or Email watters.alan@gmail.com for more information or text/email a good photo for a quote.

Website: <https://alansfineart.com/>



THE PARADE CINEMA

Marlborough

FILM ★ FRIENDS ★ FOOD

Editorial

Welcome to this bumper edition of the Rowde Village News. I say 'bumper' as we have eight more pages than in the last issue.

The most concerning issue for all of us at the moment is the situation in Ukraine and our village residents have been doing what they can to help. See what we have been doing on pages 26 to 29 and to find out the ways you can help, please read the information we have published on page 22.

With the Queen's Jubilee celebrations coming up you can read about our planned events in the village on page 30 and I hope to see lots of you there.

This issue we also have a very interesting and enlightening article about our most famous resident, Francis Isabelle Duberly. This one is not to be missed and it's on pages 32 and 33.

There is also a great feature on The Parade Cinema in Marlborough on page 34 (plus an advert on page 2). I have watched a couple of movies there now and must say that I was very impressed with how comfortable it was and with the added bonus of being able to eat supper whilst watching. I hope the redesigned cinema in Devizes is as good when it finally reopens!

The timely short story on page 23 gives the history of the Easter egg and there's a good selection of letters on pages 46 & 47.

Finally, I had hoped to feature two or three more arts and crafts people on page 51 but we have had no more submissions. Please, if you live in the village and are involved in any form of arts and crafts, get in touch so that we can promote you, it's free!

Mind how you go, Ed

This magazine is brought to you thanks to Jam Print Design & Printing and all the advertisers

Notice to contributors & advertisers

This magazine is generally printed in black and white in hard copy and delivered free to every home in the parish but additionally it is hosted on the **Village website** in full colour. If anyone does not wish any particular details (photographs, names, contact details, etc) to appear on the World Wide Web then they are advised not include them in their submissions, thank you.

Contributors please also note:

The deadline for articles and any changes to advertisements is the 15th of every second month.

Inserts: Due to the extra work created by inserting leaflets into the magazine and the fact that the team is already stretched, we very much regret we are unable to accept requests of this nature except in very special circumstances, when there will be a small charge.

Views expressed in this magazine are those of its contributors. They do not necessarily represent the views of the magazine's editorial team.

Contents

April/May 2022

Rowde all about it (pages 4 & 5) *News and views from village clubs and organisations*

Rowdey Cow News (page 6)

Rowde Primary Academy (page 10)

Silverwood School (page 11)

Living on the Waterways (pages 12 & 13)

Rowde Parish Council (pages 14 to 16)

The St Matthew's Pages (pages 18 & 19)

inc. Church Rotas and details of Services and Events

Fun Column & Photo Fun (page 20)

Ukraine - How can you help (page 22)

Short Story (page 23)

The Buzz about Bees (page 24)

Local News (pages 26 to 33)

Feature - The Parade Cinema (page 34)

Village Diary (page 45)

Letters (pages 46 & 47)

Sudoku (page 48)

Quick Reference List of Advertisers (page 48)

Quick Reference Contacts and Village Guide (page 49)

FREE Classified Ads (page 50)

Rowde Arts and Crafts - New Feature (page 51)

The Magazine Team

Alan Watters (Editor)

Tel: 01380 724788

Email: watters.alan@gmail.com

Suzan Jackett (Assistant Editor)

Tel: 01380 729791

Email: suzijj@rocketmail.com

Julie Baker (Advertising Manager)

Tel: 07796690413

Email: juliebaker72@yahoo.co.uk

Sue & Richard Scrusse (Distribution Managers)

Tel: 01380 729488

Email: scrusefamily@aol.com

Cover Images

The photograph on the front cover was taken by Marianne Eccles. It shows our local window cleaner Taras at a Ukrainian Relief Warehouse in Swindon (see page 22 for more information on how you can help and see pages 26 & 27 for the local news story).

The 'Flying the Flag' photograph on the back cover was taken by Alan Watters.

MONDAY CLUB NEWS

Bromham and Rowde Day Centre for Older People

Monday Club is now meeting permanently in the Clubhouse every Monday between 10 am and 1 pm. We enjoyed our time at Angell House but refurbishment of the lounge in early January meant it was no longer suitable for large groups.

Serena continues to spoil us with her delicious food. This year Valentines Day fell on a Monday, and we had a lovely themed meal.

The Monday following the weekend of storm Eunice we were surprised by a visit from a camera crew from ITV News who interviewed some of our members to find out how they had coped during the power cuts. Pauline and Nick both had starring roles on the local news that evening!

To find out more about Monday Club, please contact

Carol - 01380 850925 or Caroline - 07557 983940

We have room for new members, so why not come along for a coffee and a chat one Monday morning and see if you would like to join us?

Caroline Culley 01380 850531

Please contact Carol, the Chair of Monday Club, to find out more.

Email: cmhindle@outlook.com

The Monday Club is a community day centre and lunch club for older people in Bromham and Rowde. It is grant aided through Wiltshire Council.



ROWDE BOOK CLUB

The book for April is 'A Short History of Tractors in Ukrainian' by Marina Lewycka. Meetings are generally held on the fourth Wednesday evening of the month. Contact Ann on 01380 724788 for further info.

BOOK REVIEW

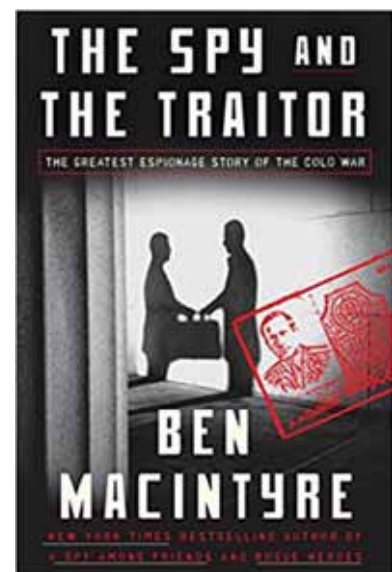
'The Spy and the Traitor' **by Ben Macintyre**

The Spy and the Traitor of the title is a Senior KGB officer, Oleg Gordievsky, who became a double agent, supplying the British with invaluable secrets over a period of ten years before defecting to Britain in 1985.

We learn about his career in the KGB, how he became a traitor and how he managed to lead a double life, keeping the details secret even from his wife and family. His British MI6 handlers had to have a detailed escape plan for him, practising the details repeatedly over many years until they managed to smuggle him out of the Soviet Union to Britain in 1985.

This is a fascinating book and very well written. Members of the Book Club agreed that it was highly recommended.

Suzanne Jacobs



ROWDE LADIES CLUB

The ladies met in the Village Hall on February 15th and enjoyed a Pointless Quiz with the winning team being Kay, Kate, Heather and Hazel. The lucky Raffle winner was a new member Kay so we hope she will come along again!

On March 15th, again in the Village Hall, some rather odd Beetles were drawn in a Beetle Drive but fun was had by all! Raffle winner this month was Di Buckland.

Next month, April 12th at 2.30pm in the Village Hall, members will be trying their

hand at making an Easter Bonnet and at the May meeting on May 24th we will be making something for the Jubilee celebrations.

Di. Buckland

ROWDE TUESDAY AFTERNOON CLUB

We met again at the Rowde Cow on February 22nd for a natter over a cup of tea or coffee and a teacake.

Next we will be meeting for lunch at the Rowdy Cow on April 5th.

Daphne Ellis, Secretary/Treasurer 722655

BAG 2 SCHOOL FREE FUNDRAISING FOR SCHOOLS

In partnership with your school or organisation

Rowde CE Primary Academy



Bag 2 School is a company that specialises in the reuse and recycling of good quality second-hand clothing and we have arranged to make a collection from your school. All the bags will be weighed and you will be paid for the total weight collected. Remember, the more you collect the greater the benefit to your school.



By using this paper leaflet we are helping to reduce unnecessary extra plastic. Please use your own bag or bags (there is no limit). The leaflet is FSC accredited, please recycle it.

When the clothes have been removed from the bag the plastic will be packed and sent for recycling.

We are collecting good quality items for RE-USE:

Men's, ladies' & children's clothing, paired shoes, handbags, belts & accessories.

(No uniforms, workwear, pillows, duvets or pieces of fabric please)

***The more we weigh the more we pay!
Extra bags are welcome - there's no limit***

Please return your Bag2School on:



Monday 4 April 2022 by 9am

01609 780 222

www.bag2school.com

helpdesk@bag2school.com

ROWDEY COW NEWS



Since our last village news we have had a very busy February and March. Historically February has always been our quietest month but after last Winter when we were in lockdown I think we are all so happy to be allowed out it has been unseasonably busy!



Our Valentines Evening was really enjoyable with the beautiful Spanish Guitar playing from Andrew Hurst combined with the delicious food cooked by our own Mark Jenkinson, it really was a night to remember!



Then we had a difficult couple of days with the storm where we closed for safety but remained lucky with only superficial damage from the strong winds - which was very frightening in the exposed wind tunnel we are situated in. We then had a really good busy half term and now we are in March with Spring upon us! We are starting to recruit for extra staff as we are getting busier. We are looking towards Easter now and preparing for the Summer months and have some exciting new plans underway!



Karen, our Ice Cream Production Manager, is busy making ice cream and also preparing for our seasonal Easter flavours! We are very excited to be the new ice cream supplier for Bowood House and Gardens and are making our first delivery next week ahead of their opening for the Spring!

We are planning for the Queen's Jubilee celebrations and on the Thursday 2nd June we will be having a family fun afternoon and evening celebration from 3pm – 7pm. People will be invited to join us and will be allowed for the first time to bring their own food and picnics onto the grounds and there will also be a barbecue for people who prefer to buy some hot food here as well as a bar – there will be a bouncy castle and roundabout, a football pitch, rounders and music. We are open to ideas as these are just our initial plans! It will be a great Rowdey Fun Celebration which we are all thoroughly looking forward to!

We would like to thank you for your continued support and we look forward to seeing you all soon!

Sue x



CARER CAFES BACK IN VENUES

It's over two years since the doors were forced to close on Carer Support Wiltshire's face-to-face carer cafes and support groups. The charity are now delighted to be able to welcome back carers for a cuppa, slice of cake and a chat at venues across Wiltshire.

Carer Support Wiltshire runs the cafes to give those people who care for someone the opportunity to meet with others who are in a similar situation to their own. Being a carer can be an isolating experience and carers may spend a lot of time at home if the person they care for has a disability or illness that makes it difficult for them to go out.

You must book your place in advance as numbers will be restricted to give everyone the space they require. Call 0800 181 4118 to book, or email admin@carersupportwiltshire.co.uk.

Lansdowne Strand Hotel, Calne – 2nd Tuesday of the month, 10:30am-12

Angel Hotel, Chippenham – 3rd Monday of the month, 10:30am-12

Methuen Arms, Corsham – 3rd Thursday of the month, 10:30am-12

Bear Hotel, Devizes – 1st Wednesday of the month, 10:30am-12

Palmer Gardens, Trowbridge – 3rd Wednesday of the month, 2-3:30pm

Parent carers café – 3rd Wednesday of the month, phone for venues/times

Kath Brice, PR & Communications Officer Direct Line: 01380 819606



Carer Support Wiltshire

IN PERSON CARER CAFES ARE BACK!

COVID RESTRICTIONS APPLY

A Network Partner of CARERS TRUST

We are reintroducing our in person Carer Cafés across Wiltshire. Not ready for in person cafés? We are still running virtual cafés too.



CHARITY PLANT AND CRAFT FAIR IN AID OF THE WANSDYKE CARRIAGE DRIVING GROUP (RDA)

by kind permission of Mr and Mrs Christopher Woodhouse

Sunday 24th April 2022 10.30am - 2.30pm

Banbury Racecourse, near Marlborough

Adults £5.00 Children under 12 free



Charity Number [1180584](https://www.charitynavigator.org/id/1180584)



Charles S. Winchcombe & Son

INDEPENDENT FAMILY FUNERAL DIRECTORS & MEMORIAL CRAFTSMEN
Est. 1932





- Longest established
- Family owned and run
- Qualified and Licensed
- Available 24 hours a day
- Each funeral personalised
- Pre-paid funeral plans
- Craftsman made memorials







01380 722500



Winchcombe House, 37 New Park Street, Devizes, SN10 1DT



www.wiltshirefunerals.co.uk



Canal Boat Rental

From the Wharf below
Caen Hill Locks

www.foxhangers.co.uk

Choose from our fleet of 14 modern narrowboats, all built new at Foxhangers

Visit our website for complete details of our

Weekend Breaks

Midweek breaks

Weekly Breaks

More to Foxhangers than boat hire!

Bespoke boat building/Re-fits/Painting

All aspects of boat engineering

Chandlery

Tel: 01380 828795

4 self-catering units and a campsite
available at Lower Foxhangers
Visit www.foxhangers.com for details

WE NEED YOU!

Do you have some news to share or just have something to say about the village?

If you can contribute to the content of your Rowde Village News in any way or would like to give us feedback (good or bad) or discuss any magazine issues then please contact:

Alan Watters on 01380 724788 or by email at watters.alan@gmail.com
or **Suzan Jackett** on 01380 729791 or by email at suzijj@rocketmail.com

DISCLAIMER

Please note that the information given and views expressed in this magazine are generally as supplied by the contributors. Our personal comments may sometimes be expressed in the editorial on page 3 and if our views are given elsewhere, they will be credited as so. In addition, much of the local news items is sourced directly from other publications and the internet. We therefore apologise for any inaccuracies published but regrettably we have no control over this possibility happening. We will however publish corrections notified to us as soon as possible.

Alan Watters, Editor

Magazine Submission Deadlines for 2022 (bi-monthly)

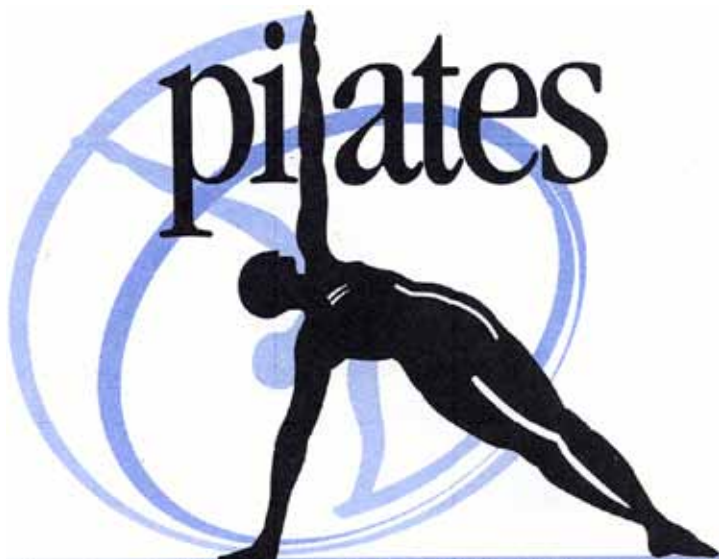
15th May

15th July

15th September

Move.Every.Day.

Classes after Easter:



@ Rowdefield Farm, Rowde:

Improvers/Intermediates

Mondays @ 6.00 pm

Tuesdays @ 6.45 pm

Beginners class: to start soon

Please email to register interest

To book your place or for any enquiries please email suzijj@rocketmail.com or call Suzan on 01380 729791

find me on INSTAGRAM: med.pilates or FB: Move Every Day Pilates

mander duffill

— Est 1947 —


CHARTERED ACCOUNTANTS
TAX & FINANCIAL ADVISERS

WHAT WE OFFER:

- Accountancy and Tax Services
- Tax Compliance, Planning and Advice
- International Tax Planning and Advice
- Business Sales and Acquisitions
- Company Restructuring
- Company and Business Start-ups
- Management Accounts, Bookkeeping and VAT Services
- Payroll and Auto Enrolment
- Research and Development
- Financial Services
- Investments
- Protection
- Inheritance Tax Planning
- Pensions and Retirement Planning


GET IN TOUCH:

 info@manderduffill.com

 01249 650441

 The Old Post Office
41-43 Market Place
Chippenham SN15 3HR

DEVIZES OFFICE

 01380 711441

 45 New Park Street
Devizes SN10 1DT

Offices also in Malmesbury
and London



www.manderduffill.com

NEWS FROM ROWDE PRIMARY ACADEMY

Our bright start leads to their bright future

Hello from us all at Rowde C of E Primary Academy! We are early into the second Spring Term, but can certainly feel the benefits of the brighter, warmer days.

There's a brilliant buzz of learning here, as the children are becoming immersed in their topics for the term. Wondering the corridor, you go from Space to Fantastic Beasts; from Ancient Egypt to the Romans; from Natural Disasters to Evolution – it's magical. The classes are also well into their books for this term:

Birch Class - A range of picture books related to Space, including 'Look Up!' By Nathan Bryon

Ash Class - The Boy Who Grew Dragons by Andy Shepard

Maple Class - Marcy and The Riddle of The Sphinx by Joe Todd-Stanton

Poplar Class – The Thieves of Ostia by Caroline Lawrence

Cedar Class – Floodland by Michael Sedgewick

Oak Class – Skellig by David Almond

World Book Day

On Thursday 3rd March we celebrated World Book Day. The children's costumes were amazing and we really appreciate the effort and dedication from both children and parents! There was a lovely enthusiasm around school as they shared the books they brought in and enjoyed a number of book-related activities and stories.

The whole school read *Rain Before Rainbows* by Smriti Halls and David Litchfield, which gave us a unique opportunity to discuss one book as a whole school in assembly – it was magical. It is a beautifully illustrated story with key themes of hope, friendship and community that we used to bring our school community even closer together yesterday. In Year 6, we examined the language and themes in the story and used this as inspiration to write our own sonnets; I thought I'd share one example with you below.

Good vs Bad

A Sonnet by Dorothy, Molly and Kaiya

The rain will emotionally drain you,
Drown you until you're begging on your knees.
It will ruin everything that you do,
Killing you slowly making you beg 'please'!
But there is a solution – it will go,
Because heavy rain comes before rainbows.
The silver lining to the dark, black clouds,
From being heart-broken to being proud.
From the horrible storms we get the rain,
And from the rain, the sun will come and shine
The rainbow will wash away the pain.
That rainbow shining – so very divine.
Trust me, trust the process. It will be fine.
Remember, I will be there by your side.

Author visit

Eileen Browne, author of the Handa books is visiting school on Monday 28th March. She is coming to talk



to the children and work with pupils in Birch and Ash class (R – Year 2), sharing and discussing her stories and what it's like to be an author. After school, she is going to run a workshop for parents on children's literature, diversity and the importance of reading at home. She is particularly interested in ensuring that children are exposed to books with female leads and BAME characters to ensure representation. Her list of the Top 21 of 2021 is available here: <https://theaoi.com/wp-content/uploads/2021/09/Eileen-Brownes-Top-21-of-2021.pdf>

Community Art Project

Later in the year, we are also looking forward to welcoming community artists No Added Sugar back to the school. They will come in for a two-day art project in June and work with pupils from Year 3 – 6. Using the story 'The Dot', children will design and decorate circular wooden disks to be part of a wooden installation on the wooden panels between the classrooms outside. Parents and anyone from the community can come and also contribute so we will get the dates and details to you in advance if you'd like to join in!

Sport at Rowde

Miss Johns, our Year 4 teacher and PE coordinator, has been working hard to enrich our PE provision here at Rowde. Last term, we had coaches from Bath Rugby in to work with children across the school. This term, we are fortunate enough to have Wiltshire Cricket coach, Vicky, visit weekly. Here is a message from Miss Johns:

We are in Week 2 of our Cricket Roadshow run by Wiltshire Cricket and what a great first couple of weeks it has been. This week, we have been practicing bowling focusing on the accuracy of our throw and technique. The children have been really enjoying their sessions with Vicky and learning something new each time. Some of the children in Year 3 & 4 wanted to share their responses:

"I like how we are challenged when learning a new skill" (Oskar).

"I like watching a demonstration and then focusing on this skill within the session" (Laythan).

Starting next week, Year 6 will have the opportunity to learn about being playground leaders with Vicky and her team as part of an after school club – more information to come. I'm sure we have a number of budding cricket stars of the future!

Alice Simpson

NEWS FROM SILVERWOOD SCHOOL - ROWDE CAMPUS

Building Community, Inspiring Learning

Executive Headteacher - Mr Sean McKeown

Our therapy dog Cleo has been into the classrooms; students sit with her and also read to her; they absolutely love her visits, as do the staff.



It has been World Book Day in school with students and staff dressing up as their favourite characters.



The building works have commenced at the Rowde Campus on the new classroom block, specialist teaching spaces, hydrotherapy pool and sport and play areas, including the recent planting of over 350 trees within the school grounds.



Artist's impression



Artist's impression



Artist's impression

AN UNEASY PARADISE - LIVING ON THE WATERWAYS

FIONA'S STORY

I grew up in Wiltshire, so I have known the K&A my whole life - but for four years of my twenties, I called its waters my home. During those years, I got to know it intimately. I formed lasting friendships and have many fond memories that will last me a lifetime.



Fiona with a friend

Boaters! What a wonderful and close-knit community of colourful characters, each with a unique story to tell. The beautiful thing is that despite all our comings and goings between different mooring spots, we all shared the same (tow)path home; and over time I got to know many of these colourful characters, over many a cup of tea. Campfires along the towpath lent the perfect backdrop for discussions and impromptu jam sessions on late summer evenings. One particularly fond memory is of a dinner shared with friends, that was unexpectedly rounded off with a bedtime story from a wandering Irish storyteller, who was attracted by the glow and warmth of the fire. Another was a planned al fresco dinner that went ahead despite the thunderstorm that ensued! When a nearby tree was struck by lightning and we felt the earth beneath us move, we fled to the safety of a lifeboat, no less, for apple and blackberry crumble! Ah yes, the blackberries... freshly picked after a wrestle with the brambles. Pockets full. Hats full! Everything tastes better when you pick it yourself! Yes, I'd have to say that after the friendly faces, it's the foraging places that I miss the most. The smell of the first wild garlic in the springtime, leading you to

its hiding places. The pleasure of picking elderflowers for cordial and getting covered in natural confetti. The excitement of finding delicious wild mushrooms whilst scrambling off-piste through patches of woodland... I could go on! To those of you who wonder what this life entails (if that doesn't paint the picture well enough), I will say this: Living on a boat brings you so much closer to nature. The view from the windows is an ever-changing backdrop of seasonal delights... but it does get flipping cold sometimes and no it's not always easy! Fortunately, more often than not a friendly neighbour is floating nearby to lend a hand or a spanner (And to those of you were my friends and neighbours back then: it was truly a pleasure!) - Fiona

GARY'S STORY

I'd always wanted to play an instrument, I love the guitar, I love blues and rock. I wanted to make a guitar talk, then one day I heard a classical guitarist and it gave me shivers down my spine and I said that's what I want, that's me.



Gary with Bridgette

I was an electrician, and in my spare time I'd practice on my guitar, my colleagues used to say "Gary that's absolute sh*t, your really bad", the more they put me down the more determined I got till eventually they were going "Gary I really like that, I really enjoyed that, what's that called?" I was doing a lot of hours for nuclear electric's, money wasn't bad, but I wanted to find a way I could start playing the guitar more, then I had a bad accident at work and I lost the top of my finger, the doctor told me my hand was

knackered I'd never play the guitar again. I was depressed, then a musician friend who lived in Spain invited me over and he started helping me with my fingers, getting them back to moving, he said to me "if you can play Romance, I'll give you a classical guitar," so every day I practised and eventually I learnt the first part of Romance, the second part has got quite a stretch to it, so I re-wrote it to suit my hand, I couldn't believe it, I was using my fingers again. My first gig was at the Alhambra, I got a lot of encouragement and that's what started me busking. After that I started playing in the streets and realised I could make more money playing my guitar then doing electrical work, so I started busking full time. One day I went into Bath and was walking along the canal path and I saw these lovely boats. And I thought yeah

that's a life for me, so I worked really hard, got a cleaning job in the morning, busked in the day and did gigs at night. I was living at a friend's, sleeping on the floor under his motorbike in the living room, within 2 and a half years I saved 30 grand and got my boat.

Living on a boat has been the best part of my life, I've never been so healthy, physically or mentally, boat life has been a lifesaver. I've met so many lovely and talented people here, it draws creativity, to be surrounded by that on a daily basis is wonderful. - Gary

***From the series - An Uneasy Paradise :
Living on the Waterways***

Instagram @anuneasyparadise

***And the softcover book of the same name is available on Amazon or from
sebastienandlouise.com***



JHS
Garden Services
Email: jhsgardenservices@yahoo.com
Tel: Mark 07368 425618

GRAY & AMOR LTD.
CARPENTRY & PROPERTY RENOVATION
Covering all aspects of property renovation and maintenance
View our range of services online or call to discuss your project
www.grayandamor.co.uk
CALL (01380) 587006

Your Parish Council

Please visit the rowdevillage.org website; the Rowde Parish Council Facebook page and the village noticeboards for confirmation of forthcoming Parish Council meetings.

A full set of minutes is available on the village website. If you would like to receive a hard copy of the minutes, please contact the Parish Clerk.

Parish Council Meetings

Since the last edition of the Rowde Village News, the Parish Council has met on 9th February and 9th March 2022.

Our New Member

We welcome Mrs Barbara Zaccarelli to the Parish Council.

New look website!

The Parish Council/village website has been updated, with many thanks to M Humphreys. The web address remains the same: rowdevillage.org

Jubilee Celebrations!!

B Zaccarelli is leading on the parishes' Jubilee celebrations. Please see page 30 for further information.

Update on Hft, Furlong Close – Cllr Mayes

The CQC rating for Hft has improved.

Discussions continue between a potential new developer and a care provider to continue to care for residents at Furlong Close. (see also report on page 31)

Silverwood School

Temporary traffic lights will be installed on the A342 near to the Silverwood School entrance from 14th March 2022. These lights will be on green or switched off until they are activated by construction traffic.

The Parish Council has continued to ask Wiltshire Council to consider a second permanent entrance for use after construction work has been completed. The cost to do this is prohibitive. Wiltshire Council has confirmed that they have consulted Highways through the planning process. Council representatives have also visited other, similar schools to look at the safe transportation of children. These factors have been taken into consideration when designing the development.

Planning

Neighbourhood planning

The Devizes Area Neighbourhood planning group continue to meet regularly.

Rowde Parish has been asked to gather information on three topics: local green spaces; non-designated heritage assets; and F class buildings to feed into the Neighbourhood Plan.

[Class F Buildings - Factory and Industrial Buildings, Offices].

Do you consider any space in Rowde which you think should be protected in the Neighbourhood Plan? Please contact the Parish Council to share any ideas that you have.

Planning Applications

- PL/2022/00322 Full planning permission Proposed New Vehicle Entrance including change of use of land to residential. Avalon Lodge, Devizes Road, Rowde, Devizes. Deadline for responses: 11/02/2022. The Parish Council supported this application as it will give better visibility pulling out onto the A342.
- PL/2022/00543 Full planning permission: 'Use of existing building for agricultural secure storage' Sandridge Farm, Brick Hill, Bromham, Chippenham, SN15 2JL. Deadline for responses: 21/2/22. This was a dilapidated agricultural building which has been converted to a house. It should be a retrospective application as the work has already taken place.

Wiltshire Council planning officers have requested that it the building is adapted so that it does not look like a home but agricultural storage instead. The Parish Council had no comment.

- PL/2022/00330 Householder planning permission Single Storey Extension to Rear. 16 Marsh Lane, Rowde, Devizes. SN10 1RF. Deadline for responses: 21/2/22. The Parish Council had no objections.
- PL/2022/00576 Full planning permission: New access onto the A342 for Ox Lea Barn Farm (track will go 100m across the existing field and join up with an internal track). Ox Lea Barn Farm, Rowde, Devizes, Wilts SN10 2BQ. Deadline for responses: 22/2/22. This application is to create their own access to the Farm, instead of access the farm over land which is not in their ownership. The Parish Council had no objections.
- PL/2022/00723 Householder planning permission: Proposed Single Storey Rear Extension. Avalon Lodge, Devizes Road, Rowde, Devizes, SN10 2LU. Deadline for responses: 25/2/22 The Parish Council thought that the rear storey extension would not be easily seen. They had no objections to the application.
- PL/2021/11580: Chapel House, Marsh Lane, Rowde, Devizes, SN10 2NP. Replace deteriorated arched wood window with UPVC first floor window to fit existing arched brickwork opening on the first floor. Replace existing back door with UPVC French doors. The Parish Council had no objections to the application.

Highways

J Dalley and the Clerk have met with the new Highways Engineer for the Devizes Area to discuss flooding on the A342, Devizes Road by the bus shelter. The Highways Engineer has agreed to dig the ditch along both side of the road. The ditch opposite the bus shelter has disappeared. The spoils from the ditch will be used to form a bank where currently there is a make-shift layby.

J Dalley and team will carry out repairs to the potholes on the Sands Lane track.

Thanks were given to people who helped clear fallen trees from roads in the aftermath of Storm Eunice, including R Wills, M Somerville and C Greenwood.

Footpaths & Cycleways

The Parish Council/CATG bid for a substantive grant to create a footpath at the entrance to Conscience Lane has been rejected. The request failed due to the high cost of the project; the small number of people who they consider would benefit from a rural project; and the large number of projects requesting funding which have been delayed due to the pandemic. The Parish Council can decide to submit the project for funding again next year. The next CATG meeting will be on 12th April 2022.

J Dalley has discussed a way to progress the project with the new tenant farmer. The Parish Council would like to create its own permissive footpath inside the hedge line. There is an issue around crossing the stream and pedestrians exiting onto the road at the point of the stream. It was proposed that the Parish Council could apply to the Community Area Transport Group (CATG) to fund a bridge to cross this area. The Parish Council is still waiting for consent from Wiltshire Council to use the land for this purpose.

Footpath maintenance: The Parish Council has purchased tools for the footpath maintenance team. There are further tools that are still needed: spade, bow saw, hammer, and a lump hammer. If anyone has spare tools that they wish to donate to the Parish Council, please

contact the Parish Clerk.

- Footpath repairs: there are still concerns about the Armco (crash barriers) which have been laid on footpath BROM76. They are reported to be dangerous to walkers. It was proposed that the Parish Council hires a dumper to transport materials across to the footpath. An adjacent landowner has given permission to cross their land. If the repair materials can be transported to the first bridge, then materials can be transported by wheelbarrow to the second site.

- The footpath route along ROWD2 and ROWD5 has been legally altered (Rowdefield Farm).

Play areas

Large playing field

There have been problems around securing extra cuts for the grass on the large playing field. Due to the mild weather, the grass has grown unseasonably quickly. The team that uses the pitch reported that the pitch was unplayable due to the length of the grass.

- The tree overhanging the BMX track has been cut back.

Small playing field

- The chain link fencing along the Tower View side of the playing field has been replaced.

- The Parish Council has purchased a new seat for the toddlers' play area and the equipment is being renovated.

Thank you to M Somerville and C Greenwood for carrying out repairs in the playing fields.

Silverlands Play area – update

The legal transfer for the play area at Silverlands Road is still being progressed. The Parish Council would like to work with local families to help re-design the area.

Allotments

If you would like to rent an allotment plot, please contact Cllr Green for more details. Costs start at £20 per annum.

Finance Update

Payment was approved for January 2022 invoices (total: £2,177.81)

Admin costs: £1,391.94

Ground's maintenance: £623.45

Playground repairs: £162.42

Payment was approved for February 2022 invoices (total: £11,245.58)

Admin costs: £1,263.19

Ground's maintenance: £1,100.99

Fencing (Tower View play area): £8,647.05

Misc. (shed, allotments, donations): £234.35

Parish Council income for January & February 2022

09/01/2022	Interest	£0.06
------------	----------	-------

31/01/2022	Interest	£0.30
------------	----------	-------

09/02/2022	Interest	£0.06
------------	----------	-------

28/02/2022	Interest	£0.25
------------	----------	-------

My Wiltshire App

- The more reports that are logged through 'My Wiltshire', the higher the priority the issue will be given.
- It is easy to report problems like potholes, dog mess, graffiti, litter and street lighting in your area using the 'My Wiltshire' online form. Reports can be made anonymously, or you can register for free. Once you have registered, you can track the reports you have made, and receive notification

once the work has been completed. The more residents report issues, the more likely we are to have them fixed.

- The 'My Wiltshire' page can be accessed through the Wiltshire Council website at: <https://www.wiltshire.gov.uk/mywilts-online-reporting>

Concerns

If you have any local concerns about footpaths, hedges, allotments, play facilities, or anything village related, we would like to hear from you. We value your input and suggestions and will try to help.

You can contact us through the Rowde Parish Council Facebook page, or by e-mail: rowdeparishcouncil@gmail.com, or by telephone: 01380 501919.

Police Matters

If you need to report a crime:

Please dial 101 to report a crime and 999 in an emergency.

It is possible to follow the Police on:

Twitter <https://twitter.com/wiltshirepolice>

Facebook <https://www.facebook.com/wiltshirepolice/>

Or sign up to Community Messaging <https://www.wiltsmessaging.co.uk/>

Dates for the diary

Parish Council meetings dates can be found in the village diary at the back of the magazine. We invite all villagers to attend, to observe and to make use of the public question time at the Parish Council meetings.

A full set of minutes is available on the Parish notice boards and on the village website.

PHILIP HALE Clinical Sports & Remedial Massage Therapist

Promoting a healthy body and mind

PRE TREATMENT POSTURAL ASSESSMENT

Soft Tissue Massage

SPORTS INJURIES

Training & Muscle Conditioning
Preparation

TREATMENT & PREVENTION OF: MUSCLE
INJURY, BACK PAIN, POOR POSTURE AND
EVERYDAY STRESSES & STRAINS

Pre, Inter & Post Event Treatment &
Recovery

WILTSHIRE BASED & MOBILE CLINIC

Please call for an appointment

TELEPHONE: 07825180179

EMAIL: reception@philiphalesportsclinic.co.uk

WEBSITE: www.philiphalesportsclinic.co.uk

INDUSTRY MEMBERSHIP AT THE
LONDON SCHOOL OF SPORTS &
REMEDIAL MASSAGE

ROWDE PARISH COUNCIL

Philip Brown	Chair	p208brown@btinternet.com	07554 311726
Lisa Wills	Vice-Chair	rpc.lisa.wills@gmail.com	01380 730078
John Dalley	Sports & Playing Fields	rpcjdalley@outlook.com	07592 063789
Debra Pullen	Footpaths, Bridleways	rpc.dpullen@gmail.com	
Chris Stevens	Play equipment safety; Grounds maintenance	rpc.cstevens010@gmail.com	
Barbara Zaccarelli	Jubilee Celebrations	barbarazaccarelli@yahoo.com	01380 726316
Sally Green	Allotments; Rowde Primary School liaison	sallygreenrpc@yahoo.com	
Mandy Humphreys	Furlong Close liaison	loireuncorked@me.com	
Josh Wills	Playing fields; Youth Co-ordinator	rpc.joshwills@gmail.com	
Chris Greenwood	Neighbourhood Planning	cj_g@me.com	
Pat Bryant		rpcpatbryant@outlook.com	01380 698567
Rebekah Jeffries	Clerk	rowdeparishcouncil@gmail.com	01380 501919

Wiltshire County Councillor for Rowde

Laura Mayes	Wiltshire Councillor	laura.mayes@wiltshire.gov.uk	
-------------	----------------------	------------------------------	--

WILTSHIRE COUNCIL - Useful phone numbers

Libraries:	01225 713000	or mobile/outside Wiltshire:	01225 777234
Parking:	01380 734812	School admissions:	01225 713010
Pest control:	01380 734721	School special educational needs:	01225 718095
Planning:	01380 734812	School transport:	01225 713004
Recycling boxes - Hills Waste:	0845 6032085	Social care – adults:	0300 456 0111
Registration - Births, Deaths & Marriages:	01225 713007	Social care – children:	01225 773500
Roads & pavements (Clarence) Freephone:	0800 232323	Street care and cleaning:	01380 734849



APT GROUP SERVICES

01380 711781

www.aptgroupservicesltd.co.uk

Approved Building and Electrical Contractors based in Wiltshire

Building Services

Approved CV Charger Point Installer

Electrical Services

Lighting Design

Smart Home Technology

Home Improvement

Fire Alarm and Emergency Lighting



TRUSTMARK
Government Endorsed Quality

GAIGER BROTHERS LTD

Building Contractors

6 Northgate Street, Devizes, Wiltshire SN10 1JL

Tel: (01380) 722412

Fax: (01380) 727890

The Wiltshire Bobby Van Trust



Registered Charity No 1153790

The Wiltshire Bobby Van Trust provide a Courtesy Home Security Service for elderly, vulnerable and disadvantaged people living in Wiltshire, who have become, or are at risk of becoming victims of house crime or domestic abuse.

Our operators will carry out a full security and fire risk assessment before fitting the appropriate security devices. If you are over 60 or vulnerable due to a mental or physical disability and don't feel that you have adequate home security please contact us to arrange a visit.

Tel No: 01380 861155 Email: bobbyvan@wiltshire.police.uk
www.wiltshirebobbyvan.org.uk



BEWLEY

Funeral Directors Limited

Our family are here for your family

Devizes local family funeral service EST. 1970

Three generations of experience, personal values and professional service

24 Hour Service | Home Visits | Simple or Bespoke Funerals | Pre-paid funeral plans | memorials

Devizes 01380 728008

Office & Chapel: 64 New Park Street, Devizes, SN10 1DP
Over 100 reviews at www.bewleyfunerals.com



April and May Worship in Rowde, Bromham and Sandy Lane
 Services in St Matthew's, Rowde are in bold.. *Services in Bromham and Sandy Lane*
are in italic. Please visit our website, for the latest information on our services:
Everyone is very welcome at all our services



Date/Time	Service
April 6 11am	Coffee and Communion, Rowde
April 10 8am 10am	Palm Sunday <i>Holy Communion (BCP), Sandy Lane</i> Holy Communion, Rowde
Apr 11 6pm	Monday Compline on Zoom
Apr 12 6pm	Tuesday Compline on Zoom
Apr 13 7.30pm	Wednesday <i>Tenebrae, Bromham</i>
Apr 14 7.30pm	Maundy Thursday <i>Holy Communion, Bromham</i>
Apr 15 2pm 6pm	Good Friday Last Hour service, Rowde <i>Stations of the Cross, Bromham</i>
Apr 16 7.30pm	Easter Eve <i>Easter Vigil, Bromham</i>
April 17 8am 8am 10am	Easter Day Holy Communion (BCP), Rowde <i>Holy Communion (BCP), Sandy Lane</i> <i>Holy Communion, Bromham - Revd Ruth's last service</i>
April 24 10am	Easter 2 Holy Communion, Rowde
May 1 8am 10am	Easter 3 Holy Communion (BCP), Rowde <i>Holy Communion, Bromham</i>
May 8 8am 10am	Easter 4 <i>Holy Communion (BCP), Sandy Lane</i> Holy Communion, Rowde
May 15 8am 10am	Easter 5 <i>Holy Communion (BCP), Bromham</i> <i>Holy Communion, Bromham</i>
May 22 8am 10am	Easter 6 <i>Holy Communion, Sandy Lane</i> Holy Communion, Rowde
May 29 10am	Easter 7 Holy Communion, Rowde

Please visit our website, for the latest information on our services: <https://www.achurchnearyou.com/church/9690/> or check the Church notice board for further information

Or contact the Administrator:

Sarah Bowler

sarahbromhamandrowde@gmail.com

07876142112

Private Prayer

The churches within our Benefice are also open for private prayer on the following days:

Monday to Saturday - St Matthew's Rowde 10am – 4pm

Monday to Saturday - St Nicholas Bromham 10am – 4pm

Sundays - Rowde & Bromham Church open when possible

Every day - Sandy Lane 10am – 4pm

Events

Regular Activities

Rowde Church Café on Tuesdays 10.45-12:00

Come and join us for coffee, cake and time to chat. Everyone welcome, from anywhere in the benefice!

Open the Book

For more information, contact Fran Hall: 07989758412 or Sarah Bowler: 07876142112 sarahbromhamandrowde@gmail.com

Growing in Faith - Prayer

For more information please contact Caroline Culley carolineculley1@outlook.com

Mothers' Union

Please contact Carole Myer for details: 01380 850706 or ed.myer@btinternet.com

Church Cleaning

For more information contact Jane Moss on 01380 729160 jmosscaudet@gmail.com Maureen Hiscocks 01380 725406 for the brass cleaning rota.

Choir

Choir Leader: Vacant

Choir Practise Junior and Adults will return as soon as possible.

Practice: 2nd and 4th Fridays of the month - at 6.30pm. Please contact Nichola Brown nicola_brown@talk21.com 01380 722406

Bell Ringing

For further information please contact the Tower Captain: Richard Heath rich.p.heath@gmail.com/ or 01380 722379

Flower Arranging

Flower Guild Rota

16 & 24 April - Easter flowers tbc

1 & 8 May - Rosie Berry

15 & 22 May - Jill Myerscough

29 May - tbc

1 June - all arrangers for Queen's Jubilee

New members are most welcome to join the team.

For further information please contact: Jane Sartin j.ksartin@talktalk.net or call 01380 727446

Contact Details

Rector: Rev'd Ruth Schofield:

07738 858909 / 01380 850191

revrschofield@gmail.com

Associate Priest: Heather Smith

07795 822515

Lay Minister: Caroline Culley

07557 983940

Church Wardens: Vacant

Benefice Administrator: Sarah Bowler

07876 142112

sarahbromhamandrowde@gmail.com

Website: A Church Near You

<https://www.achurchnearyou.com/church/9690/>

Benefice Facebook page: Churches of Rowde and Bromham

<https://www.facebook.com/groups/439328832796693/>

A Message from Rev'd Ruth

Dear Friends,

Watching the news from Ukraine has been compelling and dreadful – just so upsetting to see the results of mortar attacks on blocks of flats, hospitals and the infrastructure of their cities. The human cost is horrific, from deaths and injuries, lives and homes destroyed. Our hearts go out to the people of Ukraine, and to the surrounding nations who are also in danger. I hope that through sanctions and support for the Ukrainian government, we can help to bring the violence to an end quickly. It now looks possible that we can help refugees in more practical ways by offering accommodation and through the DEC emergency fund.

We have many reasons to be grateful, that we have safe homes and streets. But we also have concerns for our world and those who are most vulnerable. We might find ourselves wanting to say thank you to God, or to ask God to protect the people of Ukraine. St Matthews Church in Rowde is open for you to drop in to say a prayer, (10am – 4pm Monday to Saturday) or just to spend some time in the peaceful atmosphere.

Our Sunday services are shown below, and also the services during Holy Week. Our service on Easter Sunday will be my last as Rector, as I am moving to Alderbury to be Rural Dean, and Team Vicar in the Clarendon team of churches. I have had an amazing time here over the last five years, and it's been a privilege to serve you as your parish priest. Thank you for your company on the journey. But I'll be leaving you in safe hands. If you have any queries about services, you can contact:

Revd Heather Smith on 07795 822515 (especially for weddings and baptisms), Caroline Culley on 07557 983940 (especially for funerals) or Sarah Bowler, Benefice administrator on 07876 142112.

With love and prayers,

Rev'd Ruth

Coronavirus (COVID-19) Travel Alert
Travel restrictions may apply and
transportation services are subject to change.
Please check online or phone 01249 444444
before you travel.

FUN COLUMN

Welcome to this month's fun column where we are featuring Easter jokes.

1. Where does Christmas come before Easter?
The dictionary!
2. What kind of jewelry does the Easter Bunny wear?
14 Carrot Gold
3. What do you call the Easter Bunny the day after Easter?
Eggshasted
4. What's the best way to make Easter easier?
Put an "i" where the "t" is.
5. What happened to the Easter Bunny when he misbehaved at school?
He was eggspelled!
6. What does the Easter Bunny plant next to the green beans in his garden?
Jelly beans
7. How does Easter end?
With an "R"!
8. Why shouldn't you tell an Easter egg a joke?
It might crack up!
9. What do you get if you cross Winnie the Pooh and the Easter Bunny?
A honey bunny
10. Where does Easter take place every year?
Where eggs marks the spot!
11. How does the Easter Bunny stay healthy?
Hare-obics
12. What proof is there that carrots are good for the eyes?
You don't see rabbits wearing eyeglasses.
13. How can you make Easter preparations go faster?
Use the eggs-press lane!
14. How many Easter eggs can you put in an empty basket?
Only one. After that it's not empty anymore!
15. Where does the Easter Bunny get all of the eggs he hides?
He gets them from an eggplant.
16. What do you call a rabbit with fleas?
Bugs Bunny.
17. What happened when the Easter Bunny met the rabbit of his dreams?
They lived hoppily ever after!

Do you have any jokes to tell? Send them in!

PHOTO FUN

This issue we have a couple of fun cat photos



Do you have any interesting or amusing photos of people, pets or anything else? Send them in!



TOWNSEND BARN NURSERY POULSHOT



For pre-school children age 0-5 years
Open all year from 8am - 6pm

The Nursery makes full use of its rural setting, and focuses on outdoor play as well as indoor activities. Home cooked food provided.

Children's gardens & greenhouse | Vegetable plot
Tennis court | Nature garden | Outdoor wood oven
Swimming with Parents | Sandpit | Outings & Trips

For further details please contact:
01380 828141 / 07976 899946
www.townsendbarnnursery.co.uk



Tom Ashpole TREE SURGERY

All Aspects of Tree
Surgery Covered



Including Hedgework And Stumpgrinding
NPTC certified, Cert.Arb (RFS) Fully Insured

Tel 01380 699473 Mob 07929 898544

Email: enquiries@wiltshiretreecare.co.uk

Web: www.wiltshiretreecare.co.uk

UKRAINE - HOW YOU CAN HELP

The people of the United Kingdom are standing with Ukraine. Across the country, everyone wants to do their bit to support those who have been forced to flee their homes because of the conflict. Here is how you can help #StandWithUkraine.



Financial donations

If you want to donate money, there are a number of charities providing humanitarian relief in Ukraine.

The Disasters Emergency Committee (DEC) Ukraine Appeal is the largest and the UK Government are matching, pound-for-pound, £25 million of public donations to this appeal.

Make your donation safely

There are lots of organisations across the UK and internationally who have launched appeals, and you may wish to donate through these organisations instead. There are some simple steps you can take though to ensure your money is safe and being used effectively:

- Check the charity's name and registration number using the search the charity register tool
- Most charities with an income of £5,000 or more must be registered, which means they are regulated by The Charity Commission
- Make sure the charity is genuine before giving any financial information
- If in doubt, ask the charity or organisation for more information

Non-financial donations

Organisations across the UK are gathering essential supplies, such as clothes, first aid and sanitary products. Many charities and community groups will have lists of items they need.

If you want to donate goods, there are a number of collection centres in and around Rowde - St Andrew's Methodist Church in Long Street in Devizes, Melksham Town Hall (01225 704187), Castle Place Leisure Centre in Trowbridge (07455 976735), Rotary Clubs in Chippenham (contact Bob Nation on 01249 463789 or Lyn Crabtree on 01249 656172),

We have also been taking goods donations from Prospect House at The Hill in Rowde to Swindon, generally on Thursdays. Please call me (Alan) on 07886870053 or 01380724788 to check if or when we are collecting again and if you are unable to deliver and need things collected from your house. Please attach a general list of the items on the outside of the bag or box as this is very helpful to the people who are sorting.

The items the Ukrainians, both refugees and those still in their country, most need are: Thermometers, Nebulizers, Emergency First Aid equipment, Tourniquets, Batteries, Power Banks, Walkie Talkies, Phones with Chargers, Baby Dummies and Baby Bottles, Sanitary items, Modified Milk – 1-4 including one for allergy, Nappies, Wet Wipes, Food with long life – Baby Porridge, Gerber Food Jars, Juices, Mousses for children, Sweets, canned Foods – including Meat, Soups, Pot Noodles, Ready-dried Meals for reconstitution with boiling Bottled Water, Sugar, Salt, Flour, Oats, Pasta, Tea, Coffee, Oil, Rice, Thermal Mugs and Flasks, Pet Food.

Appropriate good quality warm clothing including warm gloves.

Apply to be a sponsor

The government is launching a new sponsorship scheme to make sure that Ukrainians who have been forced to flee their homes have a route to safety.

The scheme will match people, charities, businesses and community groups to Ukrainians who do not have family ties to the UK.

More details on the scheme can be found at <https://www.wiltshire.gov.uk/support-for-ukraine> or in 'Homes for Ukraine' on the DEC website -

<https://www.gov.uk/government/news/ukraine-what-you-can-do-to-help>

The most important thing is that you are able to provide at least six months of stable accommodation. This can be anything from an empty room to an unoccupied home, as long as it's safe, heated and free from health hazards, and gives your guests adequate access to bathroom and kitchen facilities.

SHORT STORY

A SHORT HISTORY OF THE EASTER EGG!

By Peggy Trowbridge Filippone



Easter is a religious holiday celebrating Christ's rising, but some of the Easter customs, such as the Easter egg, are most likely derived from pagan traditions. While for Christians the egg is symbolic of the resurrection of Jesus Christ representing his emergence from the tomb, the egg has been a symbol since before Christians even began celebrating Jesus' resurrection.

The Egg as a Symbol in History

The ancient Egyptians, Persians, Phoenicians, and Hindus all believed the world began with an enormous egg, thus the egg as a symbol of new life has been around for eons. The particulars may vary, but most cultures around the world use the egg as a symbol of new life and rebirth.

Since Easter is in the spring, the holiday is also a celebration of this annual time of renewal when the earth re-establishes itself after a long, cold winter. The word Easter comes to us from the Norsemen's Eostur, Eastar, Ostara and Ostar, and the pagan goddess Eostre, all of which involve the season of the growing sun and new birth. The egg has become synonymous with Spring's arrival.

The Egg as a Symbol of Easter

From a Christian perspective, the egg represents the resurrection of Jesus. The first book to mention Easter eggs by name was written 500 years ago. Yet, a North African tribe that had become Christian much earlier had a custom of colouring eggs at Easter. Long hard winters often meant little food, and a fresh egg for Easter was quite a prize. A notation in the household accounts of Edward I of England showed an expenditure of eighteen pence for 450 eggs to be gold-leafed and coloured for Easter gifts.

Another reason eggs became a symbol of Easter is that early on, Christians abstained from not only eating meat but also eliminated eggs during the Lenten season prior to Easter. Therefore, Easter was the first chance to enjoy eggs and meat after the long abstinence.

It is interesting to note, however, that eggs play almost no part in the Easter celebrations of Mexico, South America, and Native American Indian cultures.

The Tradition of Decorating Eggs

The practice of painting eggs goes back to ancient times when decorated shells were part of the rituals of spring. Instead of chicken eggs, however, ostrich eggs were used.

The first Christians to adopt this tradition were from Mesopotamia, and they coloured their eggs red, in memory of the blood of Christ. Methods include using onion skins and placing flowers or leaves onto the shells before dyeing to create patterns. Eastern European countries use wax resistant batik to create designs by writing with beeswax. Today, food colouring is most common.

Decorating small bare tree branches to be "Easter egg trees" has become a popular custom in the United States since the 1990s.

The Egg Used in Games

We are all familiar with the quintessential Easter egg hunt, but other countries have different traditions using the Easter egg. Some European children go from house to house begging for Easter eggs, much like Halloween trick-or-treaters. Called pace-egging, it comes from the old word for Easter, Pasch.

Another game is the Easter egg roll, which the White House holds every year. The egg rolling is a symbolic re-enactment of the rolling away of the stone from Christ's tomb. Different countries have their own rules of the game--on the White House lawn, for example, children push their eggs with a wooden spoon, whereas in Germany children roll their eggs down a track made of sticks.

Other Easter Symbols

Besides eggs, Easter is filled with images of bunnies, baby chicks, and lily flowers because they are all symbols of rebirth. The Easter Bunny, for example, arose originally as a symbol of fertility, due to the rapid reproduction habits of the hare and rabbit. It is also part of German Lutheran folklore where the "Easter Hare" judged children's behaviour at the beginning of the Eastertide season.

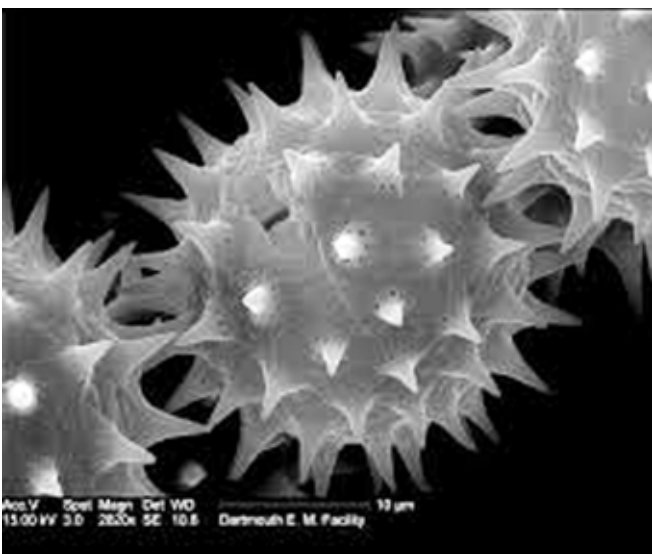
THE BUZZ ABOUT BEES

Like the gardeners amongst you, now is when the bees shift gear and really start getting prepared for summer. Gardeners prepare the soil, get those first seeds in and make sure their kit is ready. Bees make more bees. The population of the hive has declined all winter, with older bees dying and only a few young bees being raised. A colony that might have had 60,000 members at the height of summer could be down to 10,000 or fewer bees by the end of March and many of those are getting old. The hive, filled with honey by the end of autumn, is now nearly empty. But the first flowers of spring are opening and on milder days the worker bees venture forth to grab some nectar and, even more importantly, pollen.



Honeybee on Willow - note the pollen baskets on her hind legs

Pollen is the bees' protein source. Unlike their cousins the wasps, bees are vegetarian. To raise young bees, the colony needs pollen. This applies to all bees, not just honeybees. Some pollen is stored from last summer and autumn but its nutritional value reduces over winter. Fresh is best. So on mild days in late winter and early spring bees actively forage for pollen. In the late spring and summer



Sunflower pollen – with electron microscope - the spikes help the pollen stick to the bee

there are many sources of pollen and nectar, too numerous to list. In early spring there are however difficulties in getting it. There aren't as many flowers early in the year so resources are scarcer. A bee's flying time is limited in cool weather; the hive is warm but bees leaving it gradually cool down and can get chilled and die, so flowers need to be near the bees' homes.

The first flowers visited in the year include snowdrops, crocus, mahonias, hellebores, lungwort and hazel (not daffodils sadly). Then come the willows, blackthorn, plums and cherries (wild and domesticated). Coming into May there are masses of flowers for the bees to visit, the big hitters being dandelion, hawthorn, sycamore and horse chestnut. Trees are often overlooked as being of interest to bees but a big tree with blossom carries an enormous amount of flowers.



Ashy Mining bee on Phacelia - her frayed wings tell us she is an old bee

If planning to plant bee friendly flowers in your garden then the best varieties of most flowers tend to be native varieties or near native, not too highly bred and single flowers rather than doubles. The Gardeners' World and RHS websites have lists of bee friendly plants for different soils, locations and seasons. Perennial favourites include lavender, buddleia, cotoneaster and many more – but if you have the room, consider a patch of phacelia, comfrey or oregano which will soon be covered in pollinators of all sorts.

David Brown, Rowde Hall Cottage
01380 722406 davidb.rowde@gmail.com

The Marie Curie Urgent Appeal

Right now, more people need us than ever before. Our nurses, hospices and Support Line have been here through it all, day and night, caring for dying people with and without coronavirus. We urgently need your donations to help continue our vital work.

To donate go to <https://mariecurie.org.uk/donate/>



If you're living with a terminal illness or caring for someone, we're here with practical and clinical information, and emotional support.

We're here for family and friends too – no one is turned away, so please don't hesitate to call if you need us.

All the support we offer is free and open 8am-6pm Monday to Friday and 11am-5pm on Saturdays. **Helpline 0800 090 2309**

ALLOTMENT VACANCIES



Are you a keen gardener who needs more space?

If you are interested in renting an allotment, please contact:

Sally Green

sallygreenrpc@yahoo.com

Tel: 07824 832424

Rowde Parish Council



Heather Smith
North Wessex Therapies

Change and Wellbeing Therapy

**cognitive behavioural therapy - hypnotherapy - relaxation -
mindfulness - stress management**

**Face to face appointments now available at The Therapy Rooms, 32
New Rd, Chippenham and in Bromham**

**anxiety - stress - phobias - chronic pain - habits - poor sleep
life goals: career - personal life - sports**

Call for a chat or email

t: 07702 113544

e: heather@northwessextherapies.com

w: www.northwessextherapies.com

Local News



ROWDE RESIDENTS SUPPORT UKRAINE RELIEF EFFORT



Taras at collection point in Swindon

The attention of the whole western world has been very much on the desperate situation in Ukraine and whilst we follow developments in the media, our only direct contact with the Ukraine has been with Taras, our lovely window-cleaner, and our thoughts and hopes have been with him and his family both here and in his courageous country. And so, when Taras

got in touch asking for donations of items for refugees and those in need and still in Ukraine, we put together a couple of boxes of groceries and offered to take to Swindon any items from some other clients of Taras. I anticipated a couple of extra bags but the donations kept on coming and we completely filled our car with generous contributions of goodies and necessities.



Taras's family are still in their home village, south of Kiev, and his sister is a key-worker pharmacist in the centre of Kiev; they are determined to remain at home in Ukraine, taking care of their land and standing firm. He has asked us to pass on his heartfelt thanks to everyone in Rowde who has contributed in any way to the support of humanitarian aid for refugees and to the relief of suffering in his beloved country.



contributions from Rowde residents



contributions from Rowde residents

Marianne and Robin Eccles

UKRAINIAN AID TRIPS TO POLAND

Rowde resident Marion Hunt's brother David Gaston and his best friend Wilkes have driven a 16 person minibus to Poland to deliver aid to a school in Lublin that is supporting refugees, especially children, who are fleeing the



David Gaston

war in Ukraine and crossing over to Poland.

After they delivered the aid, they liaised with Polish aid workers at the border to help transport some of the many refugees to the European cities they need to reach to have their visas processed, to reunite them with families or find accommodation.

David and Wilkes will be repeating this journey from the border across Europe as many times as financially possible, helping as many refugees as they can to safety and security.

Their first trip began on 14th March and a vast amount of their aid was collected by a local group in Ross on Wye at KTS Craft Warehouse, and by Longtown School and Fairfield High School, both in Herefordshire, the latter of which also provided the minibus.

On 20th March 2022 David reported:

"Having arrived at Dover docks in the early hours of Monday morning, and been offered an earlier ferry than the one booked, a friendly face appears at the minibus window and it's owner proclaims that they are doing the same as me! They are Peter and Glynn from Norfolk who are driving a van and trailer packed with medical supplies to Lviv Hospital in Ukraine. We decide to drive together and after having departed from Dunkirk, wend our way through France, Belgium, Holland and Germany. We



hit the outskirts of Berlin after a seven hour journey and after parking up, I get a few hours sleep before setting off on Tuesday morning to complete my journey to Lublin. Peter and Glynn have headed off towards the border. I drop off the aid at Primary School 18 in Lublin in the late afternoon. They have several Ukrainian children there with more on the way so not only is the aid well received but they wonder if more might be available. I tell them we'll do our best to return on trip 2."



Wednesday; "I am writing this from the refugee reception centre at the Polish/Ukrainian border close to Dorohusk, east of Lublin while I wait for a group to take on to the next stage of their journey. The centre is set up to receive large numbers of people who are then allocated transport for their onward journeys. To get here, I have driven to the border crossing hoping that the police will stop me! They do! And, to my great relief, are incredibly helpful, taking me to

the centre and translating for me. I am given food and fresh coffee and asked to wait for a family of 10 that need to make its way to Berlin to meet up with extended family. Only, they can't be found. While I wait, I spend some time speaking with Ukrainians who want to know about travel to the UK.

The family haven't materialised but a new group of mothers, children and the elderly have arrived. It is hard to believe that these people have fled from a war in Europe in 2022. And left loved ones behind. A policeman has come in, pistol on one leg and automatic weapon over his shoulder - and a toddler in his arms. A young mum has followed him in with a cabin suitcase, a carrier bag and a blanket. She looks exhausted, frozen to the core and dazed. A picture reflected on the faces of dozens of other mothers. They sit on suitcases or huddle around with young children hovering and teenagers looking at their phones anxiously. I glance over a shoulder at a screen; the owner is looking at an image of complete devastation presumably in a Ukrainian town. He mutters something to an older woman who looks at the screen and turns away. Lots of the women talk to loved ones on FaceTime. I can see men on the screens, some in uniform, waving at their children."

Thursday; "After a chilly night in the minibus I head to a different reception centre recommended by my friendly policeman who even texted me last night to see how I'd got on. This place is a defunct Tesco store in Chelm about 20 miles in from the border. I introduce myself using Google translate and am ushered inside. Most of the building is taken up with beds. Some have privacy curtains; most don't. Bearing in mind the number of people that are here, it is very quiet apart from a small group of children playing. My passport details are taken and a Polish soldier tells me that there is a family of 10 needing to get to Berlin. So, this is where they ended up! I agree to take them and everyone seems surprised. Berlin is more than 500 miles away!

So, mum, four boys, five girls and another refugee appear outside ready for passport checks with the police. They climb on board with their few belongings and have to trust that a complete stranger is going to take them to a place they have never been to before and certainly didn't want to go to in these circumstances. The journey takes 12 hours, partly because we have to stop regularly for little children to go to the loo! Lunch is at MacDonalds (it's the only sit down facility) which brings some

smiles to weary faces. Using Google Translate, Marina says that they cannot repay me for helping them. I tell them that there's no need to but then a little hand holds out a cuddly toy panda. I smile and gesture for her to keep it but the family push the girl forwards to me and she presses the toy into my chest. I type into Google that panda will stay with me in the minibus and I reverently place it against the windscreen. We arrive at Berlin central station at 22:15, troop into the Red Cross reception centre and say our goodbyes. Each of the nine children solemnly shake my hand and mama hugs me like I've known her for years. I walk back to the minibus reflecting on what I have seen in the last few days and have to remind myself that, however bad I might be feeling, I am only an observer; millions of people are suffering unimaginably and will continue to suffer the consequences of this war for the rest of their lives.

Back in England, a day earlier than planned to avoid the P&O ferry issue, I have been contacted by a Polish aid worker/paramedic who has been given my number by Adam, the friendly policeman. She offers to find out what they are short of in terms of supplies for the centre so we can target aid more effectively. She also offers to translate for me when I am back. The plan is to leave for Chelm again in the next few days.

Thank you to everyone who has donated money to enable us to undertake this course of action. Without your generosity and the generosity of millions of others, families will spend far longer at reception centres and have less of what they need to help them get through this terrible time. At the present time, we have funding to make at least two more trips."

David Gaston

If you would like to help fund David's trips, please go to <https://gofund.me/3256d22c>

Thank you

WILTSHIRE PCC WELCOMES NEW POWERS TO TACKLE SCOURGE OF HARE COURSERS

Wiltshire PCC Philip Wilkinson has welcomed new powers being given to police to tackle hare coursers - and warned criminal gangs: 'Wiltshire isn't the easy option for your vile activities'. Earlier this month, the Home Office announced new criminal offences and increased sentencing powers for those found guilty of taking part in the illegal activity - something Mr Wilkinson had lobbied for alongside Devizes MP Danny Kruger and Salisbury MP John Glen.



Wiltshire PCC Philip Wilkinson met recently with John Glen MP, local farmers, Wiltshire Police and National Farmers Union representatives, to discuss illegal hare coursing and its serious implications for our rural communities (credit John Glen MP)

Hare coursing was a key concern raised by Wiltshire's farmers to the PCC on the doorsteps, and during his police and crime plan consultation and surveys, because their land is trampled, carved up and ruined by coursers. Mr Wilkinson said:

"I'm pleased the government listened - the existing law was no longer fit-for-purpose and it wasn't providing the police what they needed and wasn't an efficient deterrent to this type of activity. These new criminal offences, extra powers to seize dogs and ban ownership alongside increased penalties and sentences can only serve to really help in the fight against the scourge of hare coursers."

Mr Wilkinson also added that the illegal activity isn't just restricted to the counties it happens in - organised criminal gangs stream on the dark web with people betting on how many hares are caught or which dogs clock up the most kills.

LOCAL CRISP PACKET RECYCLING!

You can't put crisp packets in your blue bin but the UK's largest crisp packet recycling scheme is now here and very near to Rowde! Walkers® offers a simple and free crisp packet recycling scheme, which accepts all brands.

This is now the largest and fastest-growing scheme of its type in the UK, with more than 1,600 public drop-off locations nationwide. In fact, there is a public drop-off location within 4 miles of 80% of UK households

The nearest Community Recycling Point to Rowde is near the Spar shop at 35 Avon Road, Devizes SN10 1PR and there's 24 hour drop-off in the porch!

TEMPORARY SIGNALS ON A342 AS WORKS START FOR NEW SCHOOL BUILD



Plans to create an additional 350 school places for SEND pupils at Silverwood School in Rowde are moving forward with key developments this month, says Wiltshire Council.

Silverwood School is a campus across three sites including Trowbridge and Chippenham and all sites have been involved in shaping the plans.

Enabling works for the main build have started on-site and temporary traffic signals will be put in place on the A342. These will only be used when vehicles exit the school development site – for the rest of the time, they will be permanently on green or turned off altogether so that traffic can flow freely. They will be in place for the school build until July 2023.

To help keep children safe, construction vehicles must be kept separate from school traffic, with the build teams accessing the school site via the Lodge Entrance. But due to limited visibility and the 50mph limit on the A342, there is a risk when traffic is exiting the site – and this is why the lights are being installed. The lights will be manually operated when construction vehicles need to move to allow them to safely exit the site and join the A342.

Councillor Jane Davies, Cabinet Member for SEND said: “We are at an important stage in our plans for creating more SEND places in Wiltshire. An important part of preparation is traffic management. We apologise to anyone who is inconvenienced by these temporary traffic signals, but we have done everything we can to keep disruption to a minimum. The lights will only be used when construction vehicles are leaving the site, so for most of the time they will be on green or turned off, allowing traffic to flow freely on the A342. We’ve also installed a no left turn sign for vehicles leaving the site to minimise any additional traffic through Rowde. Once construction is completed each day, the traffic lights will be switched off and turned away from the traffic, as will all signs relating to the traffic management.”

Meanwhile on the site itself works to prepare for the main build are continuing with a haul road being created and temporary car park to prepare for the works ahead.

Contractors Willmott Dixon will oversee the work on the new school build, with the new facilities at the Rowde campus being completed by September 2023.

OUR VILLAGE JUBILEE CELEBRATIONS



Platinum Picnic in the Playing Field (next to the church)

Why not make your own Jubilee hat and wear it? Please confirm you and your family’s participation on the events page on the ‘Rowde all about it’ Facebook.

Can you give a lift to an elderly or disabled person?

There will be a few chairs

Parking is limited Toilets available

Dogs permitted on a lead

The Church and the Village Hall will be open

Let’s decorate our houses and gardens with bunting and flags!

Why not make your own bunting from scraps of material, there are lots of ideas on YouTube and Google.

Some streets are planning street parties on Sunday 5th. This is not difficult in cul-de-sacs or closes if the residents agree.

The Rowdey Cow, Cross Keys and George and Dragon will be open throughout the 4 days.

Diary of Special Village Events for the Queen’s Platinum Jubilee

Thursday 2nd June

Rowdey Cow - Family Picnics and children’s activities - Barbecue and Bar

George and dragon - Quiz 3.00pm - Barbecue 4.00pm

Cross Keys - Bingo from 7.30pm Start 8.00pm

Friday 3rd June

St Matthew’s Church - Salads and Puds 6.00pm

Cross Keys - Party/Disco 7.30 pm

Saturday 4th June

Small Playing Field - Village Picnic 12.00 - 3.00pm

Cross Keys - Cocktail Night

Sunday 5th June

Street parties

St Matthews Church - Songs of Praise 4.00pm

Cross Keys - Quiz 8p.00m



FURLONG CLOSE UPDATE



Readers may know that, late last year, in a disappointing decision, the CQC cut Furlong Close's rating from 'requires improvement' to 'inadequate' and put the site into 'special measures'. This was obviously disappointing, but flowed in large part from the inevitable impact of the uncertainty which has hung over the site last year, following the shock announcement in October 2020 that Hft and Wiltshire Council had jointly decided to close the site and force its vulnerable residents to leave.

Now, after a concerted and ongoing effort by Hft's management and staff at Furlong Close to address the CQC's concerns, I am pleased to be able to report that the CQC has recently re-inspected the site and upgraded its rating from 'inadequate' back to 'requires improvement'. The next step will be to move Furlong Close's rating up another notch to 'good' and Hft and the staff at Furlong Close are well on their way to achieving this.

The CQC's recent upgrade is a help to the families, who are finalising the plans for Furlong Close to be modernised and refurbished, so that it can remain a settled and secure home for its long-term residents and an asset for the future care of adults with learning disabilities in Wiltshire. Those plans are now coming to fruition, so that the long-term future of Furlong Close should soon be assured.

That we are now able to be optimistic that Furlong Close will be saved is a tribute to the



strong support of the people of Rowde for the residents and their families. Without that support the families would not have been able to stop the closure in its tracks in late 2020 and gain the time to put in place plans to spare our vulnerable relatives from the trauma of being separated from their friends and forced to relocate to new and strange places.

The reasons why the families have fought so hard to save Furlong Close are confirmed in the CQC's report which, while identifying areas which still require further improvement, included observations that:

'People were supported by staff who were caring and who knew people well.'

'People and relatives told us that people were quite safe.'

And:

'One family member told us, 'My relative is happy in their home and has friends in the bungalow. They all chip in with cooking, housework and prepping meals. It's a happy domestic situation.'

The CQC's report also spoke volumes for the professionalism and kindness of the staff at Furlong Close, for whom the residents and their families are extremely grateful. For example, observations in the CQC report included:

'The staff have been brilliant ...'

And:

'People were supported by staff who loved their jobs. Comments from staff included 'I love the job, I love being able to support the people I work with, it is a very rewarding job' and 'I really, really enjoy it, I enjoy the feeling of giving back, trying to support people and help their independence'.

Our heartfelt thanks to the people of Rowde for all that they have done to support us over the last 18 months. Our relatives are blessed to have you as neighbours.

Mark Steele

Families and Friends of Furlong Close

LAURENCE PLUMB
**Interior & exterior Painting/
Decorating**

Free Estimates

Tel: 01380 728174

SHE CAME FROM ROWDE - A BRIEF HISTORY OF OUR MOST FAMOUS RESIDENT

There are three historical houses within a few miles of each other in and around Devizes. These houses were lived in by members of the same family throughout the Georgian and Victorian era. The houses are, Brownston House in New Park Street, Devizes, Cleeve House at Seend and Rowdeford House in Rowde.

In most villages and towns in Britain there is at least one celebrity or a famous person from the present or past who had once lived there. Rowde is one of those villages.

This is a very brief history of Francis Isabella Duberly (Nee Locke) of Rowde.

Frances, who was to become known as Fanny to her friends was born at Rowdeford House on September 27th 1829. She was a daughter of Wadham Locke esq, a wealthy Devizes banker and MP who was born in Brownston House. In 1805 Wadham Locke sold Brownston House and purchased Rowdeford House and Estate. Fanny was the youngest by nine years of the eight children-two sons and six daughters.



Brownston House



Rowdeford House

Fanny's mother, Anna Maria Selina Powell was from Hardcott, Wiltshire who married Wadham Locke in 1802.

Fanny spent her childhood days at Rowdeford House. She would learn to ride her pony in the grounds of the house, and later in life she would become an accomplished horse rider which, in the future would serve her well. The family lived in style, with servants, and carriages visiting daily at the door.

With the death of her father in 1835, her eldest brother, also called Wadham became head of the family and the Banking business. He lived with his wife at Cleeve House, Seend.



Cleeve House

In 1838 Fanny's mother died. The eldest son Wadham decided to sell Rowdeford House and move the five unmarried sisters to Cleeve House. It was here that Fanny met Henry Duberly. They were to become husband and wife and later married at New Arlesford, Hampshire.

Fanny did not know it but her life was to change dramatically, she had married a soldier. Henry had been a young officer in the 32nd Regiment (1st Battalion, Duke of Cornwall's Light Infantry) but had resigned from his regiment when it was sent to India. At the time of his marriage to Fanny he was Paymaster to the 8th Hussars.

During the next fifteen years Frances Duberly was to become something of a celebrity with the media and indeed with the military. She was an adventurous and courageous woman who could ride a horse just as well as any cavalryman. She was also a beautiful woman who caught the eye of many an officer. Although she wore gowns she was often seen to be wearing leather lined trousers beneath them.

In 1853, with the outbreak of the Crimean War, the 8th Hussars were ordered to stand by. In 1854 Fanny boarded ship with her husband Henry bound for the Crimea. Her adventure was beginning. During the next two years she was to witness all the major battles, Alma, Inkerman, Sebastopol and the Charge of the Heavy and Light Brigades. She even rode past the so called



Crimea 1854. Mrs Frances Isabella Duberly (nee Locke) with her husband, paymaster Henry Duberly of the 8th Hussars (the only known photograph of the couple)

'Thin Red Line' as the 93rd and 42nd Highlanders fired their first volley at the Russian cavalry.

Fanny was deeply saddened by the loss of life of so many men and horses, she was surrounded by carnage, death and disease and worse was to come with the onset of winter.

On the 14th November 1854 a hurricane blew up out of all proportions. Practically everything was blown away, ships were sunk in the harbour along with the men on board, cargoes of food and clothes. Soldiers in the makeshift camps shivered and died in the rags which were once their uniforms. Later, in the months that followed everything froze in the sub-zero temperatures. Starvation and typhoid took their toll. Fanny Duberly became ill and was resigned to her bed, too weak to move.

It was with relief that the Duberly's survived the winter. 1855 was to be a better year for them and the Spring was welcome. Important dignitaries started to arrive. Florence Nightingale was among them.

With the end of the war in 1856, Fanny and Henry sailed home to Portsmouth where a review of the troops was to be held and inspected by Queen Victoria. Fanny and her husband were on parade with the troops, and because of her presence in the Crimea had made her a household name she was hoping for some recognition from the Queen. But, apart from both the Queen and Prince Albert bowing to her, they passed without a word. The only member of the Royal Family who made any fuss was little Vicky, daughter of the Queen and Prince Albert. The Princess Royal blurted out, 'Oh, there is Mrs Duberly,' and then followed on behind the Queen.

Henry's regiment, the 8th Hussars were sent to Dundalk, Ireland and stayed there until the announcement came of a mutiny outbreak in India.

Once again the Duberly's set sail. They sailed from Queenstown in the new steamship 'Great Britain', reaching Bombay on the 19th September 1857.

During the Indian Mutiny Fanny once again witnessed death and destruction in the thick of battle while her husband went about his duties.

On one occasion they had stumbled on a rebel encampment. Fanny suddenly found herself in the middle of an exchange of fire, bullets whistled over her head as men dropped screaming in agony. When the cavalry charged forward she was swept along with them as her own horse took up the excitement. Luckily for her on this occasion, the rebels turned and ran.

During the Indian Mutiny Fanny had ridden three thousand miles to cantonments, a remarkable feat in the dust and heat of India. Once again both Fanny and Henry had beaten off the cholera and dysentery that had sent so many soldiers to their graves.

In 1869 the regiment returned to Ireland. Fanny's adventures were over. Henry retired from the army in 1881 with the rank of Lt-Colonel, and they settled in Cheltenham at St Clair, The Park. They did make several visits to Wiltshire to see Fanny's brother Wadham at Seend but there is no evidence that she ever came to Rowde again.

Henry died in 1891 and Fanny with her colourful and courageous past faded into history. She died aged 73 in 1903.

Fanny had kept a diary during the Crimean and Indian wars. The diary has been published many times. Books about her life have been published and revised over the years.

In the film "Charge of the Light Brigade" her character was played by the actress Jill Bennett. The film did not do her justice when it came to her association with the 7th Earl of Cardigan whom she despised. He had led the disastrous Charge of the Light Brigade.

The remains of Frances Isabella Duberly and Lt-Colonel Henry Duberly are buried in the churchyard at Leckington near Cheltenham. Their grave, headed by a red marbled tombstone is gradually falling into decay, unkempt and uncared for, weeds cover the soil and the stone surround is cracked with age.

The house where she was born and brought up as a child is now Silverwood School which at present is being developed for an extension. Hopefully the house will remain untouched for future generations to see and be part of the history of Rowde. After all, this was her birth place.

Harry Angier, Rowde

FEATURE - THE PARADE CINEMA, MARLBOROUGH

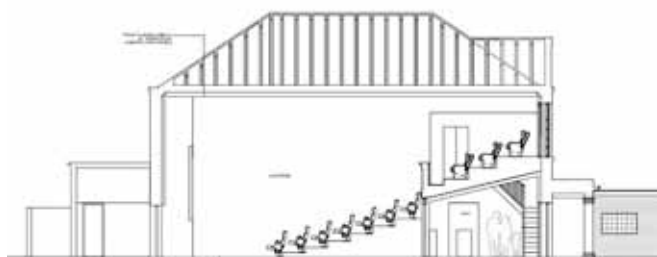
The Parade Cinema opened in September 2021 and is a small independent cinema with a 104 seat auditorium, bar and cafe showing a wide range of films, seven days a week.

In 2017 we acquired the old United Reformed Chapel in The Parade, Marlborough, and the adjoining Manse to renovate and repurpose. Like many towns across the country, Marlborough once had a cinema. It was 50 years ago, almost to the day we opened, since 'The Electric' closed its doors for the final time.

We show the latest releases, live events including Royal Opera/Ballet and The Met Opera, classics, foreign language and subtitled films and have special screenings for local family and younger communities each week.



The auditorium has full surround sound, comfortable seats with tables for your food and drinks and double sofa seats on the back rows. Private Hire is available for parties or special events.



Alongside the main attraction of the cinema, the cafe is a great place to meet friends and our fantastic outdoor heated terrace is a brilliant alfresco space to enjoy all year round.

Our fully licensed bar serves a broad range of local beers and ciders including Ramsbury and Tutts Clump, wines, cocktails, our own Apple Juice and soft drinks, Mozzo fair-trade coffee (which has been described as the best coffee in Marlborough!), tea, hot



chocolate, snacks, sweets, treats, popcorn and Marshfield Ice cream.

The cafe serves homemade, delicious and seasonal food using local ingredients. We are working to be a zerowaste business with eco-friendly food packaging, labelling, cleaning kit and supplies and we recycle/compost as much as possible.

We employ many local people and are actively involved with all our communities as well as the local Tourist Office and Town Council. We are supporting the Town's plans for this year's Jubilee celebrations as well as more widely to promote Marlborough as a great place to visit.

Looking forward to the warmer weather, we will be hosting lots of pop up events, outdoor dining and live music, from time to time, in our Courtyard. We are also supporting Marlborough's Jubilee Celebrations with an outdoor food and music festival and for our families and younger friends, we're planning an Easter Egg Hunt and other activities over the coming months.

Our strap line is : FILM * FRIENDS * FOOD and we believe we have something for everyone.

We are a relaxed, informal and friendly place to be - during the day you will find friends meeting for coffee and cake, grabbing some lunch before watching a film, dropping in after a dog walk or for a treat. The evenings are vibrant and noisy - guests enjoying drinks and food before a film, ordering a big glass of red wine and some snacks to take into the film or enjoying pizza and sharing platters.

Saturday mornings are busy with Kids Club - for our younger customers and showing classics and family favourites at a great price.



The footpath team are ready!!



We have bought the tools, read the maps and know some of the areas that need attention.

Our footpath team are ready to go out into the wilderness.

Thank you to those people who have volunteered to join the team already – we will be in touch with you again very soon!

We could do with a few more pairs of hands though.

Are you keen to work outside? Would you like to help to fix our bridges, re-instate our stiles and cut back hedges to make the footpaths accessible and safe for everyone to use?

Please contact the Parish Clerk for details on how to become involved

at rowdeparishcouncil@gmail.com, tel: 01380 501919

Thank you to the Wiltshire and Swindon Ramblers for the photograph and support, advice and encouragement.

LOCAL HONEY FOR SALE

Rowde Hall Cottage
High Street, Rowde SN10 2PL
(Opposite Cross Keys)
01380 722406
davidb.rowde@gmail.com
£5 for a 12oz jar (340g)



Stert Country House Car Boot Sale

Saturday, 7th May 2022

Buyers – from 07:30 (early birds) or 08:30
MANOR FARM * STERT* DEVIZES* SN10 3JD
(off the A342)

All pitches must be pre-booked and pre-paid

Valuations by Special Guest: Marc Allum

www.devizescruk.org

07977 039224



ABICARE GROUP IS HAVING TO 'LET GO' CLIENTS AS IT STRUGGLES TO RECRUIT MORE STAFF

One of Wiltshire's leading home care groups is having to 'let go' some of its vulnerable and elderly clients because of an acute staff shortage that is crippling the sector.



Senior carer Kate Ball, 65, who works in Bradford on Avon and the surrounding area for the Salisbury-based Abicare Group, says they are struggling to recruit new employees and are stretched to the limit.

She says they are having to withdraw from the Devizes area because they just don't have enough care workers living in the area to provide a service to their clients.

Mrs Ball said: "It is just a nightmare. The job is not just about wiping bums. We are an invisible force within your community. We are out there in the cold, the wet, and the dark from early morning to late at night, looking after your loved ones, your neighbours and your friends. We are struggling with a lack of staff. So many of our carers have left us for various reasons although some have come back to us. We are heartbroken to have had to give notice to some of our clients because we no longer have enough staff to service them.

She added: "We feel forgotten, morale is low, but we still keep going, we still keep doing our best and we are still supporting you. We will keep going even though our numbers are not enough. We are working extra hours every day while our numbers are so low. There are vulnerable people in our community both young and elderly, wanting us, waiting for us, hoping for us to knock

on their door. We desperately need more carers. We desperately need more people to care."

The Abicare Group offers live-in care, visiting home care and companionship care to hundreds of clients from five offices across the south west of England and south east Wales. The company pays its 350 care workers from £10-£16 per hour in SE Wales and from £10.50-£16 an hour in England. It is looking to take on up to 50 more employees.

But the group's managing director Anne-Marie Perry says they are struggling to recruit more employees, adding: "There is more work than any of us can do right now. There is a lot of work that comes through and we currently have just enough staff to deliver the work that we do but there is no possibility of taking on any more. Mrs Perry has spoken to Health Minister Gillian Keegan about the recruitment problem but feels that the 'poor narrative' the care sector presents to society is not helping. We need to change the narrative. Once you are out there, it is incredibly rewarding but as an industry we are struggling to get people into working with us."

Mrs Ball, who lives in Monkton Farleigh, pleaded with people, young and old, with time on their hands to consider becoming a care worker, whether full-time or part-time.

"Age is not so important, hours are flexible, we are such a lovely team of men and women to work with. It wasn't that long ago you were clapping for us on a Thursday night. Our community desperately need us, we need you."

If you would like to know more about the roles available and to join Abicare Group visit the vacancies page at <https://jobs.abicare.co.uk/>

MTM

MARKET TOWN MEMORIALS

21 Forty Acres Road, Devizes SN10 3DF

Call to arrange an appointment
Monday to Saturday
Evenings available

01380 829630
07951 536529

New Memorials
Renovations
Additional Inscriptions
Bespoke Designs
Pet Stones
House Signs

Ask for a free brochure

www.markettownmemorials.co.uk
Email: danbod1981@gmail.com

BRAMM

CALL TODAY:
07934 422 110

LIGHT
CLEANING

SHOPPING

SOCIAL
ACTIVITIES

SILVER LINING SUPPORT

Silver Lining Support offers a range of services to enable you to live independently in your own home

PET
CARE

GARDENING

SITTING
SERVICE

GP
APPOINTMENTS

LAUNDRY &
IRONING

4CHILDREN



What your 4Children Children's Centre offers

Groups and services that run from your local centre are designed for families with children under five. Your centre can provide you with information or advice on all aspects of family life, so drop in to visit us or call one of our staff team.



For further information or to get involved, telephone 01380 739835

Sure Start

Wiltshire Council



Modern & Traditional
Designed Memorials

M J SLY

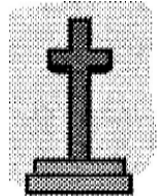
Memorial Stonemason - New Memorials
Additional Inscriptions - Restorations
Free Home Visits & Brochure

Tel: Marlborough (01672) 516797

www.mjsly.co.uk

Email: info@mjsly.co.uk

Workshop & Showroom at
Pelhams Court, London Road
Marlborough



The Board Room

Renelec House

46, New Park St,

Devizes

SN10 1DS

sycamorecentre.devizes@yahoo.co.uk

www.careconfidential.com/devizes

The
SYCAMORE
Centre 

07762 382913

A Pregnancy Choices Centre

OLIVER'S ELECTRICAL Ltd

YOUR LOCAL ELECTRICIAN

Fully Qualified Electrician

Over 15 years experience

Based on The Pound in Bromham

Call Ashley Oliver

07946 588817



LAURA MAYES

YOUR WILTSHIRE COUNCILLOR FOR ROWDE



Please contact me if you have any Council issues including:

Planning

Housing

Education

Highways – potholes, road schemes, speeding

Fly tipping and waste

Adult Social Care

I am here to offer advice and support so please get in touch:

Email: Laura.Mayes@wiltshire.gov.uk Tel: 07855 819343

Facebook: Laura Mayes – for Bromham, Rowde and Roundway

FREE CAT NEUTERING



Do you want to
neuter your
kittens
and
cats?



You know it's the right thing to do, and..

we are here to help you!

RSPCA Wiltshire Mid Branch

will pay, for a limited period, the cost of neutering and, at the same time, micro-chipping your cats and kittens if you live in **Devizes, Melksham, Westbury or Warminster** or the surrounding villages.

To apply for financial help to have your cats neutered, and, if you wish, micro-chipped at the same time, please send a blank e-mail to cnwiltson@gmail.com

We will reply with a link to the application form.

If you prefer you can telephone 07494-240622

YOU CAN APPLY FROM 25TH FEB. UNTIL 30TH APRIL 2021



Wiltshire Mid Branch
Registered charity no. 205925

Working together
to help you
and your pets



Registered charity no. 203641

CORONAVIRUS - BLOOD DONORS URGENTLY NEEDED!

And yes, you can continue to donate if you are over 70, well and have given a full donation in the last two years. There is no longer a restriction because of government guidelines.

At the moment we particularly need:

Male donors - men can donate more often than women.

Black donors - Ro blood is needed and a common type for black donors.

O negative donors - hospitals need this blood type most regularly, as it can be given to all patients.

We also urgently need people who have had coronavirus, or symptoms, to donate plasma (a special plasma appointment is required).

How to register to be a blood donor?

Check you are able to give blood. Register to be a donor online, or call 0300 123 23 23. Sign in to your online account and find an appointment – a number of appointments can be booked in advance.

You can also download the NHS Give Blood App to book or manage your appointments.



FARM FRESH LOCAL PRODUCE

We only source the best local products from our own farm and local producers, all bursting with flavour and reasonably priced

Poulshot Lodge Farm, Poulshot, Devizes, SN10 1RQ

Tel- 01380 827202

Open Tuesday – Friday 10am-5pm, Saturday 9am-4pm

For more information, to follow our blog or subscribe to our newsletter visit

www.poulshotlodgefarm.co.uk

find us on Facebook & Instagram as well



@poulshotlodgefarm

St Matthew's Flower Arrangers

We are a friendly group of people who enjoy flower arranging. It is fun, not onerous and an opportunity to keep our Church looking as it should – in particular at the time of special festivals.

As with any village some of our members move on to live elsewhere and new families move in. There have been quite a few changes during the 2 years of the pandemic.

We would welcome new members and, if you might want to consider joining us, please contact: Liz Ibbetson on 01380 720630 or

wb.ibbetson1@btinternet.com

Seasoned Logs and Kindling Available



Don't Shiver, We Deliver

Call James on
07970 781828

Martina's Professional Cleaning Services

Is cleaning and ironing taking
up your valuable time?

We guarantee the best price
for the perfect job

Regular Cleaning

Spring Cleaning

Office Cleaning

Oven Cleaning

Window Cleaning

Carpet Cleaning

Ironing

Fully insured and absolute
privacy assured

The same regular cleaner guaranteed

Call Martina on 07859818198

JOHN STUART FUNERAL SERVICE LIMITED

18 The Britox
Devizes
Wiltshire SN10 1AJ
Tel: 01380 729459



Funerals Arranged
24 Hour Service
Private Chapel of Rest

ROWDE VILLAGE

Have you visited the village website yet? You will find it at www.rowdevillage.org
(Amongst many other things, you can see your Rowde Village News in glorious full colour!)

Please note that our Rowde Village website manager is Rebekah Jeffries and she can be contacted at rowdeparishcouncil@gmail.com or 01380 720988.

Trevor Hale

NPTC Certified (arb) Fully Insured

City &
Guilds
NPTC



Tree Surgery

Felling ▪ Reductions ▪ Dismantles
Chipping ▪ Stumpremoval ▪ Hedging

Very Competitive Pricing

07737 934777

www.wiltshiretreesurgery.co.uk

Seend Cleeve

arts
together ...ageing creatively

Is an award-winning local charity, seeking to reduce loneliness and isolation and in doing so improve health and well being for vulnerable elderly people through participation in the arts. We run weekly sessions in Pewsey, Marlborough and Devizes and are looking for friends and supporters to join us in fundraising, raise local awareness and help at our sessions.

COULD YOU PLEDGE SOME TIME AND HELP BY?

- **Businesses:** Adopting us as your 'Charity or Choice' or supporting us in other ways?
- **Individuals:** Help spread the word in your community, join our 'friends' scheme, run a fundraiser for us, help promote our work?
- **Groups:** We have plenty of ideas and resources to support groups involvement

For more info about our activities or being involved

liz.lavender@artstogether.co.uk / 07780860922

www.artstogether.co.uk Registered Charity 1109432

HAIR AT HOME ROWDE

Hairdressing salon style in
Rowde or mobile, you choose!

Contact Louise Allan on 07811 948374
or Email louiseallan_1@hotmail.co.uk

Very experienced ex salon stylist

Cutting, families, colouring, perming,
children welcome



HAIR AT HOME
Experience a little hair magic

Rowde Village News Pledge

The Rowde village News is independent of political parties, private interests and government. Our policy is to provide readers with a complete, fair, accurate and balanced news and information service.

Although we are a voluntary run, nonprofit making publication we still do our best to adhere to the Press Complaints Commission's Code of Practice. While we try hard to avoid mistakes, some errors can occur during the part time and hectic process of producing one of Wiltshire's largest and most regarded village magazines (apparently, from feedback received over recent years).

Our policy is to correct errors of fact as soon as possible and, where appropriate, apologise. If you find an error of concern, please contact the editor (contact details on page 3).

Thank you for your continued support and understanding.

Alan Watters, Editor

Wiltshire Mind



Your Local Mental Health Charity

Depressed? Anxious? Stuck? Grieving?
Stressed? Not Managing?

COUNSELLING SERVICE

A safe, confidential and personal place to talk, and help you to move forward

A low cost counselling service in the community for all

Initial Assessment Free of Charge

For further information please contact:

Wiltshire Mind
24a High Street
Melksham
SN12 6LA

Email: counselling@wiltshiremind.co.uk

Phone 01225 706532

Reg Charity Number: 1113751 Reg Company Number: 5498430

Are you age 60+?

Come and join our friendly exercise class and help maintain/improve your mobility
(Exercises may be done seated or standing)

Mondays

2.30pm – 3.30pm

followed by coffee/tea and a chat at Rowde Village Hall

Cost : £3.00

For more information contact:

Yvonne 01380 723086

yve@thegablesdevizes.co.uk

ACTIVE PLUS



lendology.cic

Wiltshire Council
Where everybody matters

Lending with Heart and Mind

Wiltshire Council fund a not-for-profit loan scheme for homeowners.*

If you have lived in your home for over 5 years and:

- Are over 60; or
- Are in receipt of State Benefits; or
- Have children under 16 living with you.

You may be eligible for a home improvement loan to keep your home warm, safe, and suitable for your needs.

Lendology CIC work in partnership with Wiltshire Council to deliver the council subsidised loan scheme. Our knowledgeable team of advisers will guide you through the process of applying.

To book a no-obligation assessment, or for more information, visit www.lendology.org.uk or call 01823 461099.

Heatherton Park Studios, Bradford on Tone, Taunton, TA4 1EU

*subject to eligibility

Easterton Vehicles Ltd.

ATA Automotive Technician Accreditation
Master Technician AT 1803087958

**Independent
BMW, Mercedes, VW, Audi
and Skoda Specialists
at less than 1/2 dealer prices.
All Makes Mot's & Servicing.**

Award Winning Knowledge Of Modern Motor Vehicles
Champion Bright Spark 2006 - 2nd
Auto Trade Technician 1999 - Winner

John Kyte, Director

Unit 1 Hillcroft Farm, 5 Easterton Sands, Devizes
Wiltshire, SN10 4PY

Call: 01380 812192 or 01380 816436

www.eastertonvehicles.com

Beautiful Handmade Curtains, Blinds and Soft Furnishings

Free measuring and quotations
Hundreds of pattern books to browse



Caroline Flack 07982 985 925
caroline@flackformations.co.uk

Adams Renovations Property Services



www.adamsrenovations.co.uk

For All Your Property Requirements:

Painting, Decorating (interior & exterior)
Tiling & Flooring
Paving, Decking & Patios
Guttering & Facias
Light Building Works
Repair & Renovation Work
Bathroom Specialists

Competitive prices from an honest & reliable worker.
No job too small. All areas of Wiltshire covered.
Fully insured. References available.

Email: info@adamsrenovations.co.uk
Telephone: 01380 500549
Mobile: 07725 638165



Butchery (Locally Reared & Free Range)
Locally Sourced Fruit & Vegetables
Fresh Fish
Dairy (we have a Fresh Milk Vending Machine)
Deli
Bakery
Cakery
Dried Goods
Handmade Chocolates
Children's Toys & Clothing
Natural Pampering
Cards & Stationery
and lots, lots more



Lower Farm is also home to the Rowdey Cow Cafe
& Ice Cream Parlour

www.spotteddogfarmshop.co.uk



Use our app for
home deliveries or
click & collect



Proud of the people we work with

The G&D Spring Events

Early Birds are back! - Booking essential!

Monday to Thursday 6-7pm

2 courses for £15

(Choice of starter/main course and/or pudding)

G&D Coffee Morning Wed 13th April (10am to Midday)

Last months coffee morning was great fun with over a dozen attendees. Please come and join us for coffee, cake & friendly chat here at The G&D. All profits will go to charity

Queens Jubilee Weekend Quiz & BBQ

Thursday 2nd June

Quiz at 3pm: teams of 4 people £10pp entry includes Nachos.

Followed by BBQ at 6pm: Garlic bread, burgers, sausages, prawns, tuna steaks & loads of salads... surprize pudding

BBQ Adults £20/ Kids £7.50 (Quiz & BBQ £25 save £5)

Please call to register your team and BBQ tickets

Devizes Crib League

We are delighted to let you know the magnificent G&D Crib team have achieved an amazing 2nd place in the Devizes Crib league. Well done team! We have also been meeting every Monday night at the G&D at 6.30 for some fun practice and also to teach beginners. If you want to join us on Monday's pls give Chippy a call.

Alfresco Dining

Have you popped over to see the pubs outside spaces yet? We are very proud of the Terrace, The Potting Shed and the new Pavilion. All are heated and we supply blankets & hot water bottles for those cooler evenings. Potting Shed holds up to 6 people & the Pavilion 10 people for private dining spaces.

Thank you for your continued support and as always we look forward to seeing you at the pub.

Chippy & The G&D Team 01380 723 053

WHISTLEY CANINE COUNTRY CLUB



WHISTLEY CANINE COUNTRY CLUB
AND CATTERY

**Our Modern Luxury Heated Cattery
For Tiny Tigers is Now Open**

Luxury Holiday Venue For Our
Canine Friends
Spacious Suites Under-Floor Heating
Day Care Facility Inspections Welcome
Potterne Devizes
01380 738189/726330
Please see our website for more details
www.whistleykennels.co.uk

ROWDEY COW

Locally Sourced Food
Children's Play Area
Spectacular Views
Miniature Ponies

Delicious Home Made Ice Cream
made using our own milk fresh from the farm

**FARM CAFE &
ICE CREAM PARLOUR**

Open 7 Days a Week

Taste of the West South West England GOLD 2016

Taste of the West South West England GOLD 2015

Cooked Breakfasts
Full Lunch and Snack Menu
Children's Menu Available
Ice Cream Available All Day
Home Made Cakes and Cream Teas
all our food is freshly made from local produce

Lower Farm, Devizes Road (A342), Rowde, Nr Devizes SN10 2LX
Tel: 01380 829666 | www.rowdeycow.co.uk

The Tranquil Moment

HEALTH & BEAUTY CLINIC

Unit 2 Manor House Yard, Poulshot Road, POULSHOT,
DEVIZES, WILTSHIRE SN10 1RY

TELEPHONE: 01380 828297

www.tranquilmoment.co.uk

email: tranquilmoment@live.co.uk

**Declor facials,
microdermabrasion, massage,
sports massage and injury clinic,
shrinking Violet fat loss body wraps,
CND shellac and Brisa Lite
sculpting gel nails, CND manicure
and pedicure, Apilus electrolysis,
CACI non surgical face lift,
Declor and CND stockist**

*Please call Jo at The Tranquil Moment Health and
Beauty Clinic to make an appointment*

**Call us or follow us on Facebook for up
to date offers and news**

VILLAGE DIARY

Parish Council Meetings

(All Wednesdays 7.30pm - venues to be confirmed.
Please check noticeboards and website for location)

**6th April, 11th May, 8th June, 13th July, NO
MEETING IN AUGUST, 14th September, 12th
October, 9th November, 14th December**

Other Events

4th April - Take Bag2School items to Rowde Primary
Academy - Page 5

13th April - Coffee Morning - Page 44

24th April - Charity Plant & Craft Fair - Page 7

7th May - Car Boot Sale - Page 35

Events for the Queen's Patinum Jubilee

Thursday 2nd June - Rowdey Cow - Family Picnics
and children's activities - Barbecue and Bar -
George and dragon - Quiz 3.00pm - Barbecue
4.00pm - Page 44 - Cross Keys - Bingo from
7.30pm Start 8.00pm

Friday 3rd June - St Matthew's Church - Salads and
Puds 6.00pm - Cross Keys - Party/Disco 7.30 pm

Saturday 4th June - Small Playing Field - Village Picnic
12.00 - 3.00pm - Cross Keys - Cocktail Night

Sunday 5th June - Street parties - St Matthews Church
- Songs of Praise 4.00pm - Cross Keys - Quiz 8p.00m

Every weekend in July - Marlborough Open Studios

Every Tuesday - St Matthew's Cafe - page 19

LETTERS

ROWDE RESIDENTS TO THE RESCUE!

Dear Editor,

Whilst the road closure on the A.360 was in place, I took the Poulshot route from Great Cheverell to visit my sister, Judi Johnson, on Saturday afternoon.

As I approached Poulshot a car fired round the last bend prior to entering the bounds of the village. I took evasive action and went down a vast hole on the edge of the road. I thought it was a nasty clunk, but carried on, did my visit and departed for home a couple of hours later. I immediately realised that I had a flat tyre and pulled into the High Street in Rowde and called the rescue services.

This was where the problem really started as the insurance company passed on inaccurate directions, sending the rescuer towards Chippenham instead of Devizes (as directed). Although they only set out from Frome, it took them two hours to find me and I was sat alone, in the cold and dark and with a battery which started to fail with the flashing light I was trying to keep going.

The purpose of my letter is to say a huge "Thank You!" to the two residents in the High Street who came out and offered me a cup of tea while I waited. One promised to replace the tyre if I was still stuck when he got back to the house.

Would you please be good enough to put this note in your magazine as it shows that the Community Spirit is still very much alive and well in Wiltshire!

Yours sincerely,

Hazel Simons (Mrs)

MELKSHAM FREE DINING, BOWERHILL VILLAGE HALL

Looking for volunteers to join our happy group on a fortnightly basis

Wednesday 12.30 - 3.30. We serve both free lunches and after lunch entertainment to vulnerable and isolated adults. Great fun had by all including the volunteers.

We set up the tables, serve the lunches, teas and coffee, kitchen duties, meet and greet and offer kindness and care in abundance.

*Interested? Telephone Louisa Lewis
(Trustee) 01225 374232*

POLICE COMMUNICATION

As your Police and Crime Commissioner, I appreciate that not everyone uses social media, so I have asked the many parish and village councils in the county if I can use your newsletters to let you know what is going on and what my office and the police are doing to keep you safe.

In my many meetings with our MPs, councillors and you, you have highlighted your concerns and set the priorities that myself and the Chief Constable will deliver in my Police and Crime Plan.

This plan, should it be endorsed in early March by the Police and Crime Panel, has been informed by you and what you have told me.

Your concerns relate to anti-social behaviour in all its guises; drug abuse and the violent crime that drug abuse drives; rural crime to include, fly-tipping poaching and hare coursing; speeding and road safety; on-line scams, child grooming and bullying; violence against women, girls, children and vulnerable people and burglary.

And your most prevalent complaint was that the police response to your concerns and complaints were rarely effective or timely.

The focus of my plan will not only be on crime prosecution but also early engagement, prevention and education and perhaps even more important victim and witness support.

I have been working with the Chief Constable and we will deploy the additional 62 officers the government has awarded us to counter those threats that you have prioritised.

Half of those additional officers will be deployed to counter those specific threats above and the remainder to boost your neighbourhood police teams in order to improve the response that you receive. More detail will follow with each of my briefs.

If you have any concerns you can contact my office on pcc@wiltshire.police.uk or wish to report a crime please contact 101 or 999 in an emergency. And if you wish to remain anonymous on Crimestoppers on 0800 555 11.

Contact Information:

Emma Morton

**Head of Communications and Engagement
Wiltshire OPCC**

07384 820760

emma.morton@wiltshire.police.uk

LETTERS

TIME TO GET WALKING AGAIN!

At this time of year we start to think about the mud drying up and getting out to walk in the beautiful English Countryside again, but where to find new and interesting walks?

Walking in Wiltshire <https://www.walkinginengland.co.uk/wiltshire> has hundreds of walks to download and print, free, it also has books of walks, details of all the walking groups in the county and much more. Whether you want to walk on your own or with a group all the information is there in one place.

John Harris (the custodian of the website) said 'There is so much walking information on the web but it is difficult to find. Walking in Wiltshire (part of the Walking in England website) has brought it together in one place so whether you are walking from home, or away on holiday, you will be able to find a walk suitable for you'.

With walks from half a mile to twelve miles plus long, and a note of suitability for pushchairs and wheelchairs, everyone can find a walk to enjoy.

So home or away, check out the websites and get walking!

John Harris

www.walkinginengland.co.uk

john@walkinginengland.co.uk

WILTSHIRE'S ONLY WORKING WINDMILL OPEN AGAIN TO VISITORS



After two years restricted by covid, the much-loved Wilton Windmill will open again to the public after Easter. The mill will be open for visitors on Sundays and Bank Holidays from Easter until September 25.

Guided tours will run between 2pm and 5pm and the recently-acquired Granary Museum will be available to explore. Visitors are

welcome to ring their own picnics, and hot and cold drinks, ice creams and cakes will be available in the shepherd's hut.

Special attractions this year include the return on Saturday June 18 of the popular Smoke and Mirrors Theatre Company with their not-wholly serious Murder Mystery. This year it's The Nile High Club, featuring passion, poison and pyramids – an unforgettable way to spend a summer evening, complete with hog-roast. And on the weekend of July 29,30 and 31, we will be celebrating - a year late! – our Bicentenary. The highlight will be a memorable event, Crop to Crust, when we hope to have authentic vintage farm machinery on site to thresh the wheat before it's ground in the mill, and finally baked into delicious loaves of wholemeal bread.

Check our website www.wiltonwindmill.co.uk for full details nearer the time.

FRENCH LESSONS!

BROMHAM & ROWDE TWINNING ASSOCIATION

We are holding conversational French lessons every fortnight . If you are interested in joining us, please contact Janet Giles. 01380 850327 or janetmgiles10@gmail.com

*Kind regards,
Janet Giles.*



Kennet Furniture Refurbiz

The Furniture and White goods charity.

To donate items or purchase please call:

01380 720722 / 720200

Unit 6B, Hopton Industrial Estate,
Devizes, SN10 2EU.



PAINTING & DECORATING SERVICES

Your friendly, female decoratress!

All decorating or painting projects considered,
including children's murals

I am tidy, reliable and competitively priced

Call Carolynn on 07881 200218

or email ceeceedecoratress@gmail.com

Sudoku (medium this month)

				1		3	2	8
		2	9		6	4	7	
5	7		2		1			
								5
6	2		5		9			
		8	7		3	6	9	
				4		1	3	7

Last Month's Solution

4	7	5	1	9	2	6	3	8
2	8	3	4	5	6	9	7	1
9	6	1	7	3	8	5	4	2
3	4	7	6	1	9	2	8	5
5	1	2	3	8	4	7	6	9
8	9	6	5	2	7	4	1	3
6	3	8	2	4	5	1	9	7
1	5	4	9	7	3	8	2	6
7	2	9	8	6	1	3	5	4

Mini Sudoku (difficult this month)

Insert the numbers 1 to 6 in the blank boxes so that each of the six separate areas of the puzzle and each line vertically and horizontally contains each number only once.

1					
		5	6		
			5	6	
3					
		2			
					1

Last Month's Mini Sudoku Solution

6	2	3	1	4	5
1	5	4	2	3	6
2	4	5	6	1	3
3	1	6	4	5	2
5	6	1	3	2	4
4	3	2	5	6	1

Quick Reference List of Advertisers

Advertiser	Page
FOOD:	
Local Honey	35
Spotty Dog Farm Shop	43
Farm Fresh Local Produce	39
FUNERAL DIRECTORS ETC:	
Charles S Winchcombe & Son Ltd	7
M J Sly (Memorial Stonemasons)	37
John Stuart Funeral Services	40
D J Bewley Funeral Directors	17
MTM Memorials	36
TECHNICAL/PROFESSIONAL SERVICES:	
Dolman Audio Visual (TV & Hi Fi repairs)	50
Original Pet & People Portraits by local artist	2
Lendology.cic / Wiltshire Council	42
Mander Duffill Chartered Accountants	9
HOUSE MAINTENANCE:	
House Cleaning (Martina)	40
Painter & Decorator (Lawrence Plumb)	31
Plasterer (T O'Rourke)	50
Adams Renovations	43
Caroline Flack Furnishings	43
Building Contractors (Gaiger Brothers)	17
KFR (used furniture and white goods)	47
Cee Cee Painting & Decorating	47
Gray & Amor Ltd, Property Renovation	13
APT Building and Electrical Contractors	16
Oliver's Electrical Ltd	37
GARDEN SERVICES:	
Tree Surgery - Trevor Hale	41
Tree Surgery - Tom Ashpole	21
JHS Garden Services	13
PUBS/RESTAURANTS/CAFES/B&Bs:	
The Rowdey Cow	45
George & Dragon	44
HEALTH AND FITNESS:	
Clinical Sports & Remedial Massage	15
Active Plus for over 60s	42
The Tranquil Moment Health & Beauty	45
Wiltshire Mind	42
The Sycamore Centre	37
Pilates Classes	8
North Wessex Therapies	25
PETS & LIVESTOCK:	
Whistley Canine Country Club	45
Dog walking / Pet care services	50
Free Cat Neutering	38
MISCELLANEOUS:	
Silver Lining Support	36
Wiltshire Bobby Van Trust	17
Nursery - Townsend Barn	21
Canal Boat Rental - Foxhangers	8
Car Sales, MOTs & Servicing	42
4Children	37
Arts Together - Ageing Creatively	41
Hair at Home Rowde	41
Logs and Kindling	40
The Parade Cinema	2

And please remember to mention where you saw the advert when you contact any of our advertisers! Ed

Quick Reference Contacts and Village Guide

Listed below in alphabetical order are the various village organisations with contact names and telephone numbers

Allotments

Sally Green

07824832424

or sallygreenrpc@yahoo.com.

Bell Ringing

Contact Richard Heath

on 01380722379

Bingo

Mondays 8 pm in Village Hall

Charities

Rowdeford Charity Trust

trustees@rowdefordcharity.org.uk

www.rowdefordcharity.org.uk

Church Coordinator

Benefice Administrator:

Sarah Bowler 07876142112

Church Choir

vacant

Church Wardens

vacant

Doctor

For list of doctors contact the Health Commission, Pans Lane, Devizes, Tel: 0300 111 5717

Football

John Dalley, Tel: 727094

Footpaths

Pat Bryant **01380 698567**

Garage

Slades of Devizes Tel: 727755

Hospitals

Devizes Community Hospital

Tel: 723511

Chippenham Community Hospital

Tel: 01249 447100

Trowbridge Community Hospital

Tel: 01225 711300

Ladies Club

Held in Village Hall on last Tuesday in the month at 8 pm.

Mrs Di Buckland, Tel: 723049

Local Councils

Wiltshire Council

Tel: 0300 4560100

Devizes Town Council 722160

Neighbourhood Police Team

Jo Newbury Rural Beat Manager

PCSO Georgina Dodd

Ring 101

Google devizes npt to contact the team on

www.wiltsmessaging.co.uk>devizes

Parish Council

Chair - **Philip Brown**

Tel: **07554 311726**

Clerk - Mrs Rebekah Jeffries

Tel: 01380 501919

PC Repairs - 07833696328

ian@pcdoctor-devizes.co.uk

Playing Fields

For playing field bookings

please contact the Parish

Council Clerk on 01380 501919

rowdeparishcouncil@gmail.com

Police

Devizes Police Tel: 101

Pubs/Restaurants

Cross Keys, Tel: 078366506000

George & Dragon, Tel: 723053

Rowdey Cow Cafe, Tel: 829666

Rifle Club

Practice Wednesdays, Matches

Thursdays in Village Hall.

Laurence Plumb, Tel: 728174

Roads/Pavements

'My Wiltshire App or 03004560100

Rowde Court Studios

Ann Swan, Tel: 01380 724788

Rowde Rainbows

Meet: Tuesdays 6.15 to 7.15pm

Contact: Emma Moffat 07780756411

Email: RowdeRainbows@gmail.com

Rowde Village News

Alan Watters, Tel: 01380 724788 or

07886870053 watters.alan@gmail.com

Rowde Village Hall

Enquiries - Tel: 07926952631

Bookings - 722497 (after 6 pm)

Rowde C of E Primary Academy

High Street, Rowde SN10 2ND

Head teacher 723991

Silverwood School

Head Teacher

Tel: 850309

Hft Furlong Close (ex Self Unlimited)

Tel: 721309

St Matthew's Flower Guild

Liz Ibbetson, Tel: 720630

Flowers for all occasions,

Weddings, Funerals &

Anniversaries

TAXI

R H Reeves 725072

J Dalley 07592 063789

Toddler Group

Village Hall Thursdays 9.30-11.30

Tuesday Afternoon Club (60s+)

Held in Village Hall first Tuesday in the month at 2.30 pm.

Mrs D Ellis, Tel: 722655

Veterinary Surgeries

Estcourt - Tel: 723687

McQueens - Tel: 728505

The Paddock - Tel: 813202

Village Fete - Lisa Wills

Enquiries - Tel: 01380 730078

Website

www.rowdevillage.org

rowdeparishcouncil@gmail.com

or contact Rebekah 01380 720988

Youth Club

Iain Marr 07540017184

DOG WALKER / PET CARE SERVICES

Does your dog spend too much time home alone? Do you find it hard to fit in regular daily exercise for your dog amongst the stresses of everyday life? Let me help you! I'm a dog walker with over 10 years' experience working with dogs and other animals. I have worked for guide dogs and have been a supervisor at a busy kennels, as well as years helping at veterinary practises. My passion for animals runs very deep and their care and welfare is of up most importance to me. I am experienced, offering a professional, caring and friendly service to dogs & their owners of all Breeds I am fully insured and first aid trained.

I have a Facebook page where you can see reviews and updates of your dogs on their walks.
www.facebook.com/boopeeandfriends/

My website is www.boopee-and-friends.co.uk. Feel free to message me via website or on my Facebook page. Alternatively you can call me on 07368635866.

Dolman Audio Visual

Berhills Lane Farm, Sells Green, Seend
provides

**reliable and effective repairs
& maintenance to all makes of
TV, Hi-Fi & video equipment**

by knowledgeable and friendly technical staff
at our well-equipped service department

Please contact

Maggie or Peter

Phone/Fax: 01380 828524

Email: peterdolman@btconnect.com

T O'ROURKE

All plastering work undertaken

No job too small

FREE ESTIMATES



Contact Troy on:

01380 698993

or 07968 634689

FREE CLASSIFIED ADS FOR SALE

8x100 gm. balls of Deramores Studio acrylic double knit yarn, shade Butterscotch, all the same dye lot and in original packaging (shop price £2.10 a ball) £10 01380 721422

Drum Kit for sale. 5-piece drum kit drum by Gear4music, blue. Suitable for beginners and experienced drummers. Comes with a stool, 5B drumsticks, drumheads, and a drum key. Cymbals included are 14" hi-hats, one 16" crash, and an 18" crash/ride. Excellent condition, some minor marking on cymbals. Price £160, offers considered. For more information, please contact Patricia on 07884962079.

CLOSING DOWN SALE

This year I have decided to close down my eBay fine art shop (I'm getting too old) so I have greatly reduced the starting prices of all my listings. Grab a bargain plus save on postage too by going to <https://www.ebay.co.uk/str/alansfineart> to view online or email me watters.alan@gmail.com to discuss anything you are interested in.

STOP PRESS - FOR A LIMITED PERIOD ALL PROCEEDS FROM SALES ON MY EBAY SHOP WILL GO TOWARDS UKRAINE RELIEF FUNDRAISING

How to advertise here for FREE:

If you live locally and have an item to sell then just contact Julie on juliebaker72@yahoo.co.uk or telephone 07796690413, giving a brief description of the item, the amount you would like for it, and a contact telephone number (name optional). 'Wanted' ads also accepted. **Note - private advertisers only**
Please also let us know whether your item sells or not so that we can either remove it or keep it in for subsequent months

**PLEASE REMEMBER
to mention where you
saw the advert when
you contact any of
our advertisers!**

Rowde Arts and Crafts

This page has been created to promote arts and crafts in the village. We hope to feature more artists in future issues. If you live in the parish of Rowde and you would like to be featured here please email your details and an image to watters.alan@gmail.com

ANN SWAN

Ann is a well-known contemporary botanical artist and author of 'Botanical Painting with Coloured Pencils'. She has been awarded four RHS Gold medals, is passionate about coloured pencil and now teaches her techniques around the world mainly on Zoom.

Ann sells her originals, limited edition prints, greetings cards and giftware online at www.annswan.co.uk or you can visit her studio; ring 01380724788 or email ann@annswan.co.uk to arrange a visit.

Image: Parrot Tulips, coloured pencil drawing



ALAN WATTERS

Alan is a local animal artist and pet and people portrait artist. His Highland Cow drawing was recently awarded 'Best in Show' at the Lawrence Art Society Annual exhibition in Devizes Town Hall.

Alan sells his originals, limited edition prints and greetings cards online at www.alansfineart.com and you can pick up purchases in person at Rowde Court Studios on Marsh Lane in Rowde. And for portrait commissions please ring 07886870053 or email watters.alan@gmail.com for further information.

Image: Highland Cow, coloured pencil drawing

JILL MYERSCOUGH

Rowde artist Jill paints both landscapes and still life mostly in oil watercolour or inks. Her background in textiles informs her passion for interesting form, colours and textures with her inspiration coming from gardens and wild landscapes as well as her own collection of vintage decorative china. She has twice won first prize for landscape paintings based on the local area submitted to the annual exhibition at the Pound Centre in Corsham.

Jill works from her studio in Coach House Mews; Telephone 01380729319 or email jandrandh@gmail.com to arrange viewing.



