

# Rowde Village News



**June/July 2021**

# ART TRAIL

First 4 weekends in JULY  
artists open their studios  
to visitors free of charge

For up-to-date guidelines on visiting artist's studios in 2021 please visit our website at:  
[marlboroughopenstudios.co.uk](http://marlboroughopenstudios.co.uk)

## OPEN STUDIOS 2021

CALNE DEVIZES HUNGERFORD MARLBOROUGH PEWSEY WROUGHTON

...and including three  
artists in ROWDE!

Opening: July 3rd/4th, 10th/11th and 17th/18th



### Karen Lawrence Bright

Painter of gardens and landscapes  
in oil and watercolour

**2 Bunnies Lane, Rowde SN10 2QB**

(2nd turning on left after the George and Dragon)

[karenlawrencebright@gmail.com](mailto:karenlawrencebright@gmail.com)

[www.karenlawrencebright.com](http://www.karenlawrencebright.com)



### Jill Myerscough

01380 729319

07557994513

[jandrindh@gmail.com](mailto:jandrindh@gmail.com)

**4 Coach House Mews,  
Rowde SN10 2QR**

Opening as above and  
also by appointment

Jill will be exhibiting  
paintings in oils and  
mixed media. Subjects  
Jill has been working on  
this year are still life, views  
in the boat yard and local  
scenery. The light, colour  
and texture are great  
influences in her work.



### Ann Swan Botanical Artist & Illustrator

**Rowde Court Studios**

**Marsh Lane, Rowde SN10 2NW**

(Entry through green gate opposite Springfield Road)

Vibrant, contemporary plant portraits in graphite and  
coloured pencils

01380 724788

[www.annswan.co.uk](http://www.annswan.co.uk)

[ann@annswan.co.uk](mailto:ann@annswan.co.uk)

[facebook.com/annswanbotanicalartist](https://www.facebook.com/annswanbotanicalartist)

Instagram - [#annswanbotanicalartist](https://www.instagram.com/annswanbotanicalartist)

YouTube - Ann Swan Botanical Artist

**Garden Open**

## Editorial

Welcome to this edition of the Rowde Village News. I hope you are all coping with the recent atrocious weather. Even as I write, the wind and the rain are battering the window pane in front of my desk. Can it really be nearly June? Never mind, at least we seem to be getting the better of the Coronavirus and restrictions are easing so that we can visit family and friends

Despite continued restrictions on activities in the village during the last two months, this is again a very full issue and there are some really interesting articles in the local news section (pages 24 to 31).

We have reports from both schools on pages 12 & 13 and also from the Rowdey Cow on page 6 and from the Rowde Book Club on page 7.

There are some interesting lockdown love stories on page 8 and another excellent instalment from David Brown on page 9 all about bees. All well worth reading.

If you enjoy finding out about Rowde's past then have a look at 'Rowde Memories' on pages 32 to 34. I personally found the story about Rowde resident Charles Lowe, who died in 1909, fascinating and it is followed up with some super old photos and newspaper cuttings.

Finally, you can read all about the recent Annual Village meeting on pages 30 and 31. Along with several reports and discussions of great importance to the village, Trish Gange from the Families and Friends of Furlong Close group attended the meeting and gave an update on the current Hft situation (see page 30).

Meantime, mind how you go, keep staying safe and we will see you next time,

**Ed**

---

This magazine is brought to you thanks to Jam Print Design & Printing and all the advertisers

### Notice to contributors & advertisers

This magazine is generally printed in black and white in hard copy and delivered free to every home in the parish but additionally it is hosted on the **Village website** in full colour. If anyone does not wish any particular details (photographs, names, contact details, etc) to appear on the World Wide Web then they are advised not include them in their submissions, thank you.

### Contributors please also note:

The deadline for articles and any changes to advertisements is the 15<sup>th</sup> of every second month.

**Inserts:** *Due to the extra work created by inserting leaflets into the magazine and the fact that the team is already stretched, we very much regret we are unable to accept requests of this nature except in very special circumstances, when there will be a small charge.*

*Views expressed in this magazine are those of its contributors. They do not necessarily represent the views of the magazine's editorial team.*

## Contents June/July 2021

**Rowde all about it** (page 4) *News and views from village organisations*

**Rowdey Cow News** (page 6)

**Rowde Book Club** (page 7)

**Lockdown Love Stories** (page 8)

**The Buzz about Bees** (page 9)

**Our footpaths need your help** (page 11)

**Silverwood School** (page 12)

**Rowde Primary Academy** (page 13)

**Rowde Parish Council** (pages 14 to 16)

**The St Matthew's Pages** (pages 18 & 19)

*inc. Church Rotas and details of Services and Events*

**Fun Column & Photo Fun** (page 22)

**Local News** (pages 24 to 31)

**Rowde Memories** (pages 32 to 34)

**Village Diary** (page 41)

**Letters** (page 42)

**FREE Classified Ads** (page 43)

**Sudoku** (page 44)

**Quick Reference List of Advertisers** (page 44)

**Quick Reference Contacts and Village Guide** (page 45)

---

## The Magazine Team

Alan Watters (Editor)

Tel: 01380 724788

Email: watters.alan@gmail.com

Suzan Jackett (Assistant Editor)

Tel: 01380 729791

Email: suzijj@rocketmail.com

Julie Baker (Advertising Manager)

Tel: 07796690413

Email: juliebaker72@yahoo.co.uk

Sue & Richard Scrusse (Distribution Managers)

Tel: 01380 729488

Email: scrusefamily@aol.com

---

## Front Cover Image

The wonderful photograph on the front cover shows Rowde's iconic Caen Hill flight of locks just as nightfall is approaching and was taken and sent in by Mark Somerville.

Thanks and well done Mark, it's a cracker!

## ROWDE LADIES CLUB

*The Club will start again as soon as possible.*

*Di. Buckland, Secretary 01380723049*

## ROWDE TUESDAY AFTERNOON CLUB

*The Club will start again as soon as possible.*

*Daphne Ellis, Secretary/Treasurer 722655*

## HIWAY CLUB

*(for the hearing impaired)*

*The Club will start again as soon as possible.*

*Di Buckland (Secretary) 723049*

## ROWDE VILLAGE HALL

It is hoped that the Village Hall will be able to reopen again in July providing the regulations stay the same. Hirers will still be expected to sanitise any equipment, tables and chairs after use and if still compulsory to wear face masks. During the time the Hall has been shut the Committee have discussed and made decisions regarding items needing attention by telephone. The only work carried out has been the cutting down of several rotten ivy covered trees and bushes etc. and the grass mowed regularly. The Committee has been successful in obtaining a Government Grant towards the loss of income during the pandemic.

When the Hall does reopen an A.G.M. will be held but in the meantime we are desperately needing active members to help with the general running of the Hall as without extra help the future of the Hall is uncertain as the Committee numbers have decreased and through health and age other members may have to 'step down'.

Anyone wishing to assist please contact me at Andrew's View, Marsh Lane for further information.

**Barrie Barrett, Chairman 722186**

## MONDAY CLUB NEWS

*Bromham and Rowde Day Centre for Older People*

We are very excited to announce that we will be opening Monday Club on Monday 7th June. We can't wait to see all our members and helpers again, it's been such a long time. Once we have settled back in we will be delighted to welcome new members. So if you are looking for something to do on a Monday, do think about coming to join us from the beginning of July.

We have been keeping in touch since our last meeting on 9th March 2020, with weekly, then fortnightly newsletters. Members have kept their minds active with quizzes and word puzzles. Members have kept themselves active with regular exercises. But its just not the same as meeting up face to face.

So, the Social Centre is booked and the helpers are ready. I'm going to have a sort out of the Monday Club cupboard where I think there might be some rather stale biscuits! Let's hope the mice haven't visited.

For more information please contact :

**Caroline Culley, 07557 983940 / 01380 850531  
carolineculley1@outlook.com**

The Monday Club is a community day centre and lunch club for older people in Bromham and Rowde. It is grant aided through Wiltshire Council.

**Page 4**



**KFR**

refurbishing furniture  
reviving communities

### Kennet Furniture Refurbiz

The Furniture and White goods charity.

To donate items or purchase please call:

**01380 720722 / 720200**

Unit 6B, Hopton Industrial Estate,  
Devizes, SN10 2EU.

### Seasoned Logs and Kindling Available



**Don't Shiver, We Deliver**

**Call James on  
07970 781828**



### PAINTING & DECORATING SERVICES

**Your friendly, female decoratress!**

All decorating or painting projects considered,  
including children's murals

**I am tidy, reliable and competitively priced**

**Call Carolynn on 07881 200218**

or email [ceeceedecoratress@gmail.com](mailto:ceeceedecoratress@gmail.com)



**The P.C. Doctor  
(Rowde/Devizes)**

**07833 69 6328**

**ian@pcdoctor-devizes.co.uk**



## Covid-19 support in Rowde

The group has re-activated for our extremely vulnerable neighbours.

If you are unable to collect prescriptions yourself, or arrange to have them delivered, or need shopping urgently, please contact the support group on

**01380 730078 or 01380 698567**

or by email at

**[rpc.lisa.youth@gmail.com](mailto:rpc.lisa.youth@gmail.com) or [patabryant@live.co.uk](mailto:patabryant@live.co.uk)**

**Alternatively, if you are able to help others, we would love to hear from you too.**

## ORIGINAL PET and PEOPLE PORTRAITS



Colour or mono portrait of a person or pet by local artist Alan Watters. Original portrait. Limited edition prints and/or personalised greetings cards packages also possible. Original supplied in a quality mount ready for framing.

Call or text Alan on 07886870053 or Email [watters.alan@gmail.com](mailto:watters.alan@gmail.com) for more information or text/email a good photo for a quote.

Website: <https://alansfineart.com/>

## The Marie Curie Urgent Appeal

Right now, more people need us than ever before. Our nurses, hospices and Support Line have been here through it all, day and night, caring for dying people with and without coronavirus. We urgently need your donations to help continue our vital work.

To donate go to <https://mariecurie.org.uk/donate/>



If you're living with a terminal illness or caring for someone, we're here with practical and clinical information, and emotional support.

We're here for family and friends too – no one is turned away, so please don't hesitate to call if you need us.

All the support we offer is free and open 8am-6pm Monday to Friday and 11am-5pm on Saturdays. **Helpline 0800 090 2309**

 **MTM**  
MARKET TOWN MEMORIALS  
21 Forty Acres Road, Devizes SN10 3DF

Call to arrange an appointment  
Monday to Saturday  
Evenings available

**01380 829630**  
**07951 536529**

New Memorials  
Renovations  
Additional Inscriptions  
Bespoke Designs  
Pet Stones  
House Signs

Ask for a free brochure  
[www.markettownmemorials.co.uk](http://www.markettownmemorials.co.uk)  
Email: [danbod1981@gmail.com](mailto:danbod1981@gmail.com)

**BRAMM**



## LAURENCE PLUMB Interior & exterior Painting/ Decorating

Free Estimates

Tel: 01380 728174

# ROWDEY COW NEWS



In the Easter Holidays we reopened our cafe again first of all just selling takeaways and then as soon as we were allowed to we opened up our garden seating area. Some days when it was dry we were super busy and then obviously when it rained we were very quiet and it was difficult to predict as the weather forecasts were not often accurate.

From this week we have been able to open our inside seating areas including our new garden house which we are really excited about and looking forward to welcoming everyone back in. We are taking bookings for indoor seating or you can just turn up. On hotter days we will try and bring our Victorian Cart outside to sell ice cream from to help alleviate any queues.

We are offering Full English Breakfasts, a lovely Lunch menu with delicious Daily Specials served until 4pm, Cream Teas, Cakes, Coffees Sunday Roasts and of course Ice Cream, Sundaes & Milkshakes! Our Sunday Roasts have become especially popular so would recommend booking a table in advance.

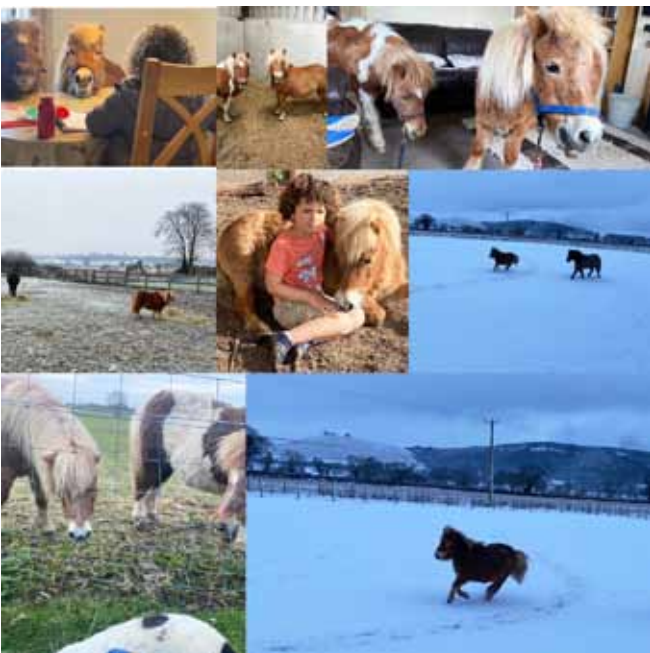
We were very sad to lose our little pony Jess this month to colic. She has been part of our family for the last 10 years and will be hugely missed. The vet thought it was a blockage to her stomach which caused this. Ponies do not have the ability to be sick like humans. It could have also been a change in the sugar levels in the grass and even though they are on restricted grass it could still be a possibility. It does highlight the importance of not feeding the

ponies when you visit us as even a carrot could have caused this. It may look like they do not have much grass but for their tiny little stomachs it is enough for them along with the hay they are fed so please do not feed them anything else.



We are keeping the cafe and garden house opened up as much as possible to keep the air flowing through and ensuring everyone stays safe and we currently have kept an outdoor ordering system and you can then sit down and we bring the food to you – we will adapt and make changes where necessary according to the weather and the circumstances. It is so lovely to have some normality back and we are so happy to start seeing all our customers again! So come and see us all soon!

**Sue x**



# ROWDE BOOK CLUB

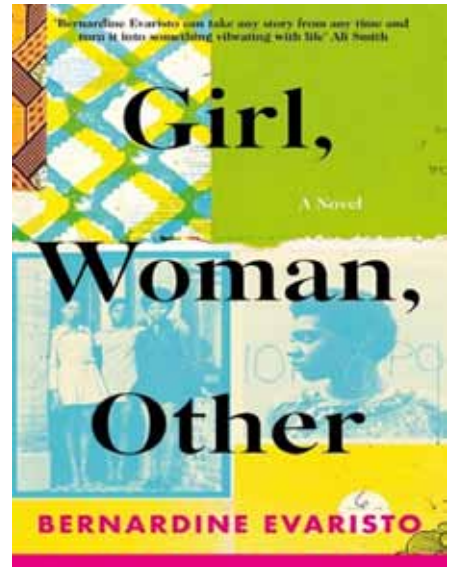
Due to Covid-19 restrictions there was no book Club in April or May so the next meeting will be on 23rd June. **Contact Ann on 01380 724788 for further info.**

Meanwhile here are some recommendations from book club members:

**‘Spring Cannot be Cancelled’ by David Hockney & Martin Gayford.** A very gentle and interesting read in which they discuss David Hockney’s project in Normandy, art in general and Hockney’s philosophy of life.

**‘The Cracks That Let the Light In’ by Jessica Moxham** An uplifting and moving read giving a greater insight into disability and the true life account of Jessica’s journey raising her disabled son Ben.

**‘A Place Called Winter’ by Patrick Gale** – an enjoyable read.



*The book for discussion in June will still be ‘Girl, Woman, Other’ by Bernardine Avaristo*

## LOCAL HONEY FOR SALE

Rowde Hall Cottage  
High Street, Rowde SN10 2PL  
(Opposite Cross Keys)  
01380 722406  
davidb.rowde@gmail.com  
£5 for a 12oz jar (340g)



## SPANISH TUITION

Native language tutor offering Spanish lessons and Translation

- \* **GCSEs and A levels:** experience on preparing students for various exams: AQA, Edexcel, Common Entrance & International Baccalaureate.
- \* **Adult tuition** to all levels: beginners, intermediate & advance.
- \* **References** available if required.
- \* **Contact** Patricia Córdoba on:  
[pcordoba@hiberniatype.com](mailto:pcordoba@hiberniatype.com)  
mobile no.: **0788 496 20 79**

## Charles S. Winchcombe & Son

INDEPENDENT FAMILY FUNERAL DIRECTORS & MEMORIAL CRAFTSMEN  
Est. 1932



- Longest established
- Family owned and run
- Qualified and Licensed
- Available 24 hours a day
- Each funeral personalised
- Pre-paid funeral plans
- Craftsman made memorials



01380 722500 Winchcombe House, 37 New Park Street, Devizes, SN10 1DT [www.wiltshirefunerals.co.uk](http://www.wiltshirefunerals.co.uk)

# LOCKDOWN LOVE STORIES

## HOW I REALLY FELT

I read a lockdown love story of a nurse and the doctor. I felt her pain.

I am a front line nurse but nothing brought me greater pain last year than the devastation of heart break. You were 'The Doctor' But I knew you were never going to be just my friend. For the year of Covid we built a foundation.

It was nothing more at the start. Just friends. You had a girlfriend. And I was busy completing Hinge. Then you split up with her. Had been 'over for a while'.

But friendly messages transpired into light touching and tactile, subtle moves. We would eat our free meals and laugh whilst the chaos of Covid was erupting in the background. Skilled, intelligent, emotional and beautiful.

A few months later we started to be 'FWB'. I told myself, I don't feel a thing. I believed it for a while but I was the 'cool & funny' girl that didn't get attached you thought. You know, the one we all pretend to be when we are lying to ourselves. I justified every red flag you waved directly in my face. But I had never felt so insecure and so confident around anyone but you. 'What did I do right to be so lucky' I thought.

We spent the weekend of my birthday together. You cooked us my favourite dinner and wrapped me a present the way I liked. We always had the most fun and you made everything else feel so insignificant. It was the best weekend of my life.

One day without warning - I could feel you slipping away. I don't know why, even to this day. But I just knew I wasn't at the front of your mind anymore.

When you finally said you were ready to date and find someone I thought this was my window. You said you didn't feel the same. I was a 'great friend' and excellent in an 'intimate' way apparently.

Not good enough to be with though and I felt like my heart had been stabbed. I was so lost. For a long time dark and intrusive thoughts regularly infiltrated my mind. 'I am nothing, unskilled and unintelligent.'

Time allowed for friendship. But I can never just be your friend. We are 'always going be friends' you said and few months later and I 'just don't want a relationship right now.'

You still tell me about some girls you've dated and ask for advice. I pretend to be the 'cool girl.' I'm not cool.

You will never know I cried after every hinge date on the way home because they weren't you. Which I'm sure has an impact on my Uber rating. I never really told you how much you broke my heart. For the risk of me being vulnerable and feeding your ego. Sometimes I wonder if it would have made a difference.

I have to convince myself everyday you are not my person. It been almost a year since we first started sleeping together during the pandemic. I would never exchange that feeling, even if it was

brief. Now as cringe as it sounds I am the best version of myself. But of all the loves I thought I have had, there has never been one more passionate, painful and as true as you.

But don't worry friend, I would never give you the satisfaction of knowing how I really felt. x

## IN TOGETHER

We had an amazing and complicated meeting. Took many months. Then real time happened over a few years: life, ex-partners, so-called-friends, oh my goodness. Lockdown meant me and you. Glorious, glorious, glorious. Together. Adoration. Back to life and work, but with an extra glance, finger-twine, leg-stroke. We were together but now we really are in everything together. I know it's not cool to say, but thank-you lockdown!

## RISKY

Living as housemates during lockdown and falling for each other was a risk I wasn't sure I was willing to take but we couldn't help it. I remember you clearly saying "you know, If this doesn't work out, one of us will have to move out". We laughed it off and made out instead.

Fast forward seven months, now I find myself having to move out. Turns out the risk failed us.

## OH HONEY

It's just me and my unhealthy commitment to lovehoney from now on. I think I'm going to need some more batteries.

## ENTWINED

Nearly 6 years have passed and it's still YOU. Neither can deny the magnetic pull towards each other. Both having our separate lives to live but you're always on my mind. We didn't speak for a couple of years but you were still in my heart. We've never touched and have barely seen each other but I'm sure I've loved you in a past life. The pandemic hit and you were on my mind. I hoped you were safe. You contacted me as I think you were worried for me too. I think you feel the same way I do or at least the songs you send me tell me you do. Would like to hear/read your words one day so I know for sure. I've waited this long I guess I can wait a bit longer. Then I guess get on with our separate lives.

## NINE MEN

In the past 18 mnths I have dated nine different men. Each gained a nickname. PE Teacher, The Nob, Irish, Fireman, Hatfish, Danny Boy, The plumber, Traveller, Lockdown and Scottish. Each and everyone of them wanted a second date but I didn't. Two turned into flings and then into FWB (friends with benefits). One I spoke to every single day for six weeks during the Winter lockdown, when I finally met him, I spent the entire date thinking of everyone else I would rather be with. I am not even sure why I was dating now, maybe I just want company. I've deleted my aps, think I am going to decorate my house and buy a new TV. But I know when I get a quiet moment on my own I will end up back swiping. To fill the void, there is still a part of me that craves connection.



# THE BUZZ ABOUT BEES

## Birds, Bees and DCAs

In my last article, I talked about swarming. How the old queen leaves home and sets up a new colony and the bees left behind have a new queen.

This new queen is responsible for laying the eggs from which grow all the bees in the colony. Queens can lay two types of egg: fertilized and unfertilized. Due to rather complicated genetics, unfertilized eggs develop into male bees known as drones. Fertilized eggs produce female bees; workers or queens. So in order to produce more girls (without which the colony would die out) it is necessary for the queen bee to be mated.



*Worker bee*



*Drone - Note the large eyes, longer antennae, longer wings and big centre section where the flight muscles are housed*

Bees don't mate in the hive. Most of the drones in the hive could be her brothers, so to get genetic diversity and avoid inbreeding for her offspring she flies off to a mysterious place called a drone congregation area (let's call it a DCA for short). There are many DCAs. They are not on the ground, they are in the air. They occur year after year in the same places. They may have a few hundred or a several thousand drones flying around in them. They are 2-300 yards across and start 5 or 10 yards up and carry on upwards for another 20 or 30 yards. If you have been out walking in the country on a warm day and heard a loud humming for which you could not find a source, you may have walked under a DCA. On a nice afternoon the drones from many hives in the area will fly to a DCA (drones from over 200 hives have been found in one DCA). They fly for 5



*A flying drones - a hapless queen in a cage being pursued by drones in a DCA*

minutes or so (maybe just over a mile) and cruise around for another 15 to 20 minutes before coming home to refuel and rest before going out again. When they cruising they are hoping to happen upon an unmated queen. They will spend many afternoons like this through the summer and the vast majority are unsuccessful.

A new queen, when she is mature enough to fly and mate, sets out with an escort of worker bees. One queen on her own is very vulnerable and likely to make a snack for a passing swallow - so she goes in a gang. She will fly further - 2 or 3 miles to meet up with boys from outside her home area to get that important genetic diversity. As she flies through the DCA she leaves a scent trail. The drones have extra sensitive antennae to smell her scent and they pursue her. When they are closer they can see her (they have extra big eyes to see and big strong wings to catch her with). The queen will fly through the DCA with a cone of drone bees chasing her. She will mate with 10 or 15 drones in rapid succession = more genetic diversity (the successful drones die in the act) and then return home. If she hasn't mated with a sufficient number of drones the workers will send her out again the next day and a third time if necessary. This is her nuptial flight(s) and she never repeats this. She stays at home and lays eggs and doesn't leave the hive again unless she leads a swarm out.

**David Brown, Rowde Hall Cottage**  
**01380 722406 davidb.rowde@gmail.com**



Heather Smith  
North Wessex Therapies

## *Change and Wellbeing Therapy*

cognitive behavioural therapy - hypnotherapy - relaxation -  
mindfulness - stress management

Face to face appointments now available at The Therapy Rooms, 32  
New Rd, Chippenham and in Bromham

anxiety - stress - phobias - chronic pain - habits - poor sleep  
life goals: career - personal life - sports

Call for a chat or email

t: 07702 113544

e: [heather@northwessextherapies.com](mailto:heather@northwessextherapies.com)

w: [www.northwessextherapies.com](http://www.northwessextherapies.com)



# TOWNSEND BARN NURSERY POULSHOT



For pre-school children age 0-5 years  
Open all year from 8am - 6pm

The Nursery makes full use of its rural setting, and focuses on outdoor play as well as indoor activities. Home cooked food provided.

Children's gardens & greenhouse | Vegetable plot  
Tennis court | Nature garden | Outdoor wood oven  
Swimming with Parents | Sandpit | Outings & Trips

For further details please contact:

01380 828141 / 07976 899946

[www.townsendbarnnursery.co.uk](http://www.townsendbarnnursery.co.uk)

OUR FOOTPATHS  
Need YOUR HELP....



You may have noticed that some of our footpaths in the village need some care and attention.

They are being used more and more now since the pandemic began.

It would be great if we could make all our paths useable and safe for everyone to enjoy.

We are looking to form a group of ready volunteers who have outdoor skills and the desire to help our community in a very practical way.

We have bridges to fix, stiles to re-instate, steps to add and hedges to cut back.

If any of the above appeals to you, please contact the Parish Clerk in the first instance.

at [rowdeparishcouncil@gmail.com](mailto:rowdeparishcouncil@gmail.com), tel: 01380 501919

*Thank you to the Wiltshire and Swindon Ramblers for the photograph and support, advice and encouragement.*

**GRAY & AMOR LTD.**

CARPENTRY & PROPERTY RENOVATION

**Covering all aspects of property  
renovation and maintenance**

**View our range of services online  
or call to discuss your project**

**[www.grayandamor.co.uk](http://www.grayandamor.co.uk)**

**CALL (01380) 587006**

# NEWS FROM SILVERWOOD SCHOOL - ROWDE CAMPUS

*Co-operation Responsibility Integrity Resilience Respect Kindness*

*Head Teacher - Mr M Loveridge*



We had an amazing day at school celebrating all things literacy, the pupils took part in a reading based obstacle course and had story time with hot chocolate.

All the classes took part in Enterprise Day with lots of activities outside involving crafting and toasting marshmallows over an open fire they had made.

Plane Class had a visit from two dinosaurs which they enjoyed immensely as you can see from their faces in the photo above.



As part of our work learning about the school values, the students in Ash Class have been exploring the idea of 'Respect' and they made some excellent posters, which involved good co-operation work.

How do you show respect to others?



# NEWS FROM ROWDE PRIMARY ACADEMY

*Our bright start leads to their bright future*



*As we are getting ever closer to the end of this school year and we are preparing to say farewell to our year 6 pupils, Head Boy Embry and Head Girl Martha were asked what they remember about their time at Rowde Academy. Below are a few of their memories through the years:*

## **YR R and YR 2**

I remember when the spider came out the man hole. There was also the time when a frog came out of the same man hole and it was in the tyre. I remember when the class dug a hole and then someone went down it so they covered it up. I remember when someone got a sticky chicken and chucked it on the ceiling and it wouldn't come down - it's still up there. There was also the time when someone's shorts split. Twice. I remember when I was called the worm whisperer. I also remember that we had a dinosaur teddy that we could take home. I remember when a person was leaving, someone brought in a huge chocolate cake.

## **YR 2 and YR 3**

I remember when everyone thought that the skeleton moved about but it turned out that it was just someone moving it. I also remember when we were doing a play and they gave me a role, which was cleaning up the stage for the Y6. There was also the time when we were doing a leavers service but I couldn't see the screen so I just laughed along with everyone else. I also remember when we created a superhero group with another person and we were called the Freedom Fighters.

## **YR 4**

I remember when we were on the bus to go to PGL and someone spilt all their Mentos over the bus. I remember sleeping in the disabled shower at PGL because my bed was so uncomfortable. I also remember that everyone in my room were scared of the creepy teenagers and also the mermaid man who came to the window and sat by the lake. But then they went away because some geese honked at them. I remember having concussion and going to



PGL anyway. I also remember Lewis the Dude who mentored us with his 'McDonald's amazing world of gumball' toys on his backpack. I also remember the vertical challenge; a massive wall, that had tyres. There was also the big swing, but I and one of my friends already knew what was going to happen if we pulled the rope. I also remember when my hair pulled the rope and the person shouted at me afterwards. I remember two children's faces being really funny and hilarious - everyone in the group used their cameras to take photos of them. I also remember the zip lining thing we did. We then did a game where we had to do animal impressions, but it seemed like nobody could guess that I was being the cow!

***You can now follow us on twitter at Rowde C of E Primary@RowdeSchool or on Facebook***

# Your Parish Council

Please visit the [rowdevillage.org](http://rowdevillage.org) website; the Rowde Parish Council Facebook page and the village noticeboards for confirmation of forthcoming Parish Council meetings.

Parish Council meetings have started to hold meetings again in person after laws, passed to permit remote meetings solely during the pandemic, have ceased. The meetings will also be zoomed where possible. Please contact the Parish Clerk for more details of future meetings.

A full set of minutes is available on the village website. If you would like to receive a hard copy of the minutes, please contact the Parish Clerk.

## Parish Council Meetings

Since the last edition of the Rowde Village News, the Parish Council has met on 22nd April & 19th May 2021. The Annual Village meeting was also hosted by the Parish Council on 19th May 2021 at Rowdefield Farm. Please see pages 30 & 31 for an update from the Village Meeting.

## Parish Council Membership

### Welcome...

Rowde welcomes a new Parish Council after the recent uncontested election on 6th May 2021.

New members include Wayne Cherry, Sally Green, Mandy Humphreys and Josh Wills, who join returning Parish Councillors Pat Bryant, John Dalley, Debra Pullen, Chris Stevens and Lisa Wills. Philip Brown has joined the Parish Council through co-option at the Parish Council meeting on 19th May 2021.

There's one remaining vacancy on the Parish Council.

## Chair & Vice-Chair elections

Mrs Pat Bryant has been re-elected as Chair of Rowde Parish Council. Mrs Lisa Wills has been re-elected as Vice-Chair of Rowde Parish Council.

## Parish Councillor Roles

Roles for Parish Councillors will be reviewed at the Parish Council meeting on 9th June 2021.

There was discussion on creating a role to link with Rowde Primary school. This followed on from a discussion on the future of the school's swimming pool and what action the community might be able to take to secure the future of the pool.

## Other news in Rowde...

### Village Appearance

### Grounds Maintenance

A new two-year contract has been awarded for the grounds work that the Parish Council is responsible for. The tender bid was sent out to seven local contractors. Five bids were returned. The preferred contractor was chosen on price and recent experience of work carried out.

### Playing Areas

The football pitch areas on the large playing field have been rolled, with many thanks to J Dalley. D Packer & M Stevens were also thanked for their hard work repairing the lane to the large playing field.

It has been agreed that a metal barrier will be installed at the side entrance to the large playing field, to prevent vehicular access to the field.

Repairs will be carried out to some of the play equipment in the small playing field.

## Silverlands Play Area - refurbishment

The Parish Council has applied for an asset transfer of the Silverlands Play area. There is money available at Wiltshire Council to upgrade the play facilities at Silverlands.

The Parish Council is looking for views from the local community, families and young people to gauge their views on what they would like to see in this area. If you have any suggestions, please contact Cllr Lisa Wills, 01380 730078, or by email at [rpc.lisa.youth@gmail.com](mailto:rpc.lisa.youth@gmail.com).

## Waste disposal

The Parish Council has increasing costs in disposing of public litter. It is responsible for emptying seven public litter bins in the village. The frequency of the bin emptying has been increased during the pandemic to try to keep on top of the increasing waste problem and to prevent fly-tipping.

Unfortunately, some residents are disposing of household waste sacks in some of these public litter bins. We urge all residents to dispose of their rubbish at home in their own household waste. People using the playing fields are also urged to take home their rubbish.

## Neighbourliness & Community Events

- o Rowde has entered the Best Kept Village Competition again!!

- o The road sweeper will be deployed in the village during the week commencing 31st May 2021. If you are able to do any weeding or sweeping outside of your property, that would massively help our chances in the competition.

- o We all love where we live: let's show the judges. If you can improve the village's appearance in any small way, it will benefit everyone.

## Allotments

### Oak tree

- o Wiltshire Council has approved work to take place on the oak tree sited at the allotments, under the Tree Preservation Order: TPO Ref E373. A date has not been given for the work to take place yet.

## Footpaths & Highways Safety

- Are you interested in forming a group to look at and repair some of the footpaths around the village? It has been noted that our footpaths are being used much more since the start of the pandemic and there are minor issues that need to be attended to. If you are interested and able to help, please contact the Clerk.

- There have been two road traffic accidents on the corner of Close Lane with the High Street, Rowde. Wiltshire Council has confirmed that it will replace the damaged chevron as a priority. The streetlights on this corner have recently been replaced too.

## Neighbourhood Planning

- An external planning consultant has been employed by the Devizes Neighbourhood Plan team.

- There is work ongoing to look at areas for proposed development.

- There has been one parcel of land identified in Rowde for development. There is an ongoing call for land to be included as potential sites for development.

- If you have land or know of land that could be developed, please contact the Clerk, or Cllr Pat Bryant. 01380 698567 or by email at: Rpcpatbryant@outlook.com

### Wiltshire Council update

Congratulations to Cllr Laura Mayes who has become the County Councillor for the newly formed ward of Bromham, Rowde & Roundway. Cllr Mayes will also take up post as Deputy Leader of Wiltshire Council.

The Parish Council is looking forward to working closely with Laura in the coming weeks and months.

### Silverwood School (formerly Rowdeford School)

- o A planning application has been received for a double temporary classroom at Silverwood School (PL/2021/04319). The Parish Council did not have any objections.
- o The Parish Council is concerned about the effects that the development at the school and the increased pupil numbers will have on traffic through Rowde.
- o R Berry is working on the focus group for transport with Silverwood School.
- o A review of the speed limit outside of the school will be considered after the planning application has been submitted.

### Hft

- o Wiltshire Council is working with relatives of the residents at Hft to secure care for the residents of Furlong Close for the next two years.
- o The deadline for tender submissions for the provision of care at Hft was 15 April and submissions were being evaluated at the time of writing. It was expected that the successful tenderers would be invited to interview by 29 April. Family interviews were due to be held on 10 May.
- o There are thirteen other local authorities that have residents living at Hft.
- o Wiltshire Council states that it continues to liaise closely with Hft regarding post 19 May arrangements, including confirmation of their price for the service in the interim period and the cost of the lease.

### Finance Update

The annual accounts for 2020-21 were approved by the Parish Council at their meeting on 19th May 2021. The accounts have been reviewed by the internal auditor and are being prepared for external audit.

Monthly invoices for March & April 2021 were as follows:

March invoices (total: £2,955.77)

- Admin costs: £1,382.99
- Allotments: £230.41
- Ground's maintenance: £761.70
- Subscriptions: £580.67

April invoices (total: £4,535.24)

- Admin costs: £1,474.67
- PC insurance & subscriptions: £1,190.44
- Ground's maintenance: £354.19
- Donations to village groups (s.137): £1,250
- Misc. allotments/training/leaflet printing: £265.94

Parish Council income for March & April 2021

29/03/2021	Allotment rents	£200.00
09/03/2021	Interest	£0.05
31/03/2021	Interest	£0.33
22/04/2021	Allotment rent	£430.00
14/04/2021	CIL payment (Malthouse Farm)	£2,479.48
26/04/2021	Precept	£18,822.47
09/04/2021	Interest	£0.06
30/04/2021	Interest	£0.29

### My Wiltshire App

- *Please note that Wiltshire Council is updating its website. Changes have been made to the 'My Wiltshire App'. If you have an existing account, please click on 'forgotten password' when you try to login for a new password link to access your account.*
- Please forward requests for highway repairs to the Clerk or report them through the 'My Wiltshire App'. The more reports that are logged through the App, the higher the priority will be given to the issue.
- It is easy to report problems like potholes, dog mess, graffiti, litter and street lighting in your area using the 'My Wiltshire' online form. Reports can be made anonymously, or you can register for free. Once you have registered, you can track the reports you have made, and receive notification once the work has been completed. The more residents report issues, the more likely we are to have them fixed.
- The 'My Wiltshire' page can be accessed through the Wiltshire Council website at: <https://www.wiltshire.gov.uk/mywilts-online-reporting>

### Concerns

If you have any local concerns about footpaths, hedges, allotments, play facilities, or anything village related, we would like to hear from you. We value your input and suggestions and will try to help.

You can contact us through the Rowde Parish Council Facebook page, or by e-mail: [rowdeparishcouncil@gmail.com](mailto:rowdeparishcouncil@gmail.com), or by telephone: 01380 501919.

### Police Matters

If you need to report a crime:

Please dial 101 to report a crime and 999 in an emergency.

It is possible to follow the Police on:

Twitter <https://twitter.com/wiltshirepolice>

Facebook <https://www.facebook.com/wiltshirepolice/>

Or sign up to Community Messaging <https://www.wiltsmessaging.co.uk/>

### Dates for the diary

Parish Council meetings dates can be found in the village diary at the back of the magazine. We invite all villagers to attend, to observe and to make use of the public question time at the Parish Council meetings.

**A full set of minutes is available on the Parish notice boards and on the village website.**

## ROWDE PARISH COUNCIL

Pat Bryant	Chair	patabryant@live.co.uk	01380 698567
Lisa Wills	Vice-Chair	rpc.lisa.youth@gmail.com	01380 730078
John Dalley	Sports & Playing Fields	jdtaxisdevizes@gmail.com	07592 063789
Debra Pullen		rpc.dpullen@gmail.com	
Philip Brown		p208brown@btinternet.com	07554 311726
Chris Stevens		rpc.cstevens010@gmail.com	
Wayne Cherry		rpc.wcherry@gmail.com	07511 748954
Sally Green		sallygreenrpc@yahoo.com	
Mandy Humphreys			
Josh Wills		rpc.joshwills@gmail.com	
VACANCY			
Rebekah Jeffries	Clerk	rowdeparishcouncil@gmail.com	01380 501919

### Wiltshire County Councillor deputising for Rowde

Laura Mayes	Wiltshire Councillor	laura.mayes@wiltshire.gov.uk	
-------------	----------------------	------------------------------	--

## WILTSHIRE COUNCIL - Useful phone numbers

Libraries:	01225 713000	or mobile/outside Wiltshire:	01225 777234
Parking:	01380 734812	School admissions:	01225 713010
Pest control:	01380 734721	School special educational needs:	01225 718095
Planning:	01380 734812	School transport:	01225 713004
Recycling boxes - Hills Waste:	0845 6032085	Social care – adults:	0300 456 0111
Registration - Births, Deaths & Marriages:	01225 713007	Social care – children:	01225 773500
Roads & pavements (Clarence) Freephone:	0800 232323	Street care and cleaning:	01380 734849



# APT GROUP SERVICES

**01380 711781**

[www.aptgroupservicesltd.co.uk](http://www.aptgroupservicesltd.co.uk)

**Approved Building and Electrical Contractors based in Wiltshire**



Building Services  
 Approved CV Charger Point Installer  
 Electrical Services  
 Lighting Design  
 Smart Home Technology  
 Home Improvement  
 Fire Alarm and Emergency Lighting



**TRUSTMARK**  
Government Endorsed Quality



# GAIGER BROTHERS LTD

## Building Contractors

6 Northgate Street, Devizes, Wiltshire SN10 1JL

Tel: (01380) 722412

Fax: (01380) 727890

## The Wiltshire Bobby Van Trust



Registered Charity No 1153790

The Wiltshire Bobby Van Trust provide a Courtesy Home Security Service for elderly, vulnerable and disadvantaged people living in Wiltshire, who have become, or are at risk of becoming victims of house crime or domestic abuse.

Our operators will carry out a full security and fire risk assessment before fitting the appropriate security devices. If you are over 60 or vulnerable due to a mental or physical disability and don't feel that you have adequate home security please contact us to arrange a visit.

Tel No: 01380 861155 Email: [bobbyvan@wiltshire.police.uk](mailto:bobbyvan@wiltshire.police.uk)  
[www.wiltshirebobbyvan.org.uk](http://www.wiltshirebobbyvan.org.uk)



## BEWLEY

Funeral Directors Limited

*Our family are here for your family*

**Devizes local family funeral service EST. 1970**

**Three generations of experience, personal values and professional service**

24 Hour Service | Home Visits | Simple or Bespoke Funerals | Pre-paid funeral plans | memorials

**Devizes 01380 728008**

Office & Chapel: 64 New Park Street, Devizes, SN10 1DP  
Over 100 reviews at [www.bewleyfunerals.com](http://www.bewleyfunerals.com)



# June/July Worship in Rowde, Bromham and Sandy Lane

Services in St Matthew's, Rowde are in bold.. Services in Bromham and Sandy Lane are in italic. Please visit our website, for the latest



information on our services:

**Everyone is very welcome at all our services**

Date/Time	Service
<b>Thursday 3 June</b> <i>7.30 pm</i>	<b>Corpus Christi</b> <i>Communion for Corpus Christi, Bromham</i>
<b>Sunday 6 June</b> <b>8.00 am</b> <i>10.00 am</i>	<b>Trinity 1</b> <b>Holy Communion (BCP), Rowde</b> <i>Holy Communion, Bromham</i>
<b>Sunday 13 June</b> <i>8.00 am</i> <b>10.00 am</b>	<b>Trinity 2</b> <i>Holy Communion (BCP), Sandy Lane</i> <b>Holy Communion, Rowde</b>
<b>Sunday 20 June</b> <i>8.00 am</i> <i>10.00 am</i>	<b>Trinity 3</b> <i>Holy Communion (BCP), Bromham</i> <i>Holy Communion, Bromham</i>
<b>Sunday 27 June</b> <i>8.00 am</i> <b>10.00 am</b>	<b>Trinity 4</b> <i>Holy Communion (BCP), Sandy Lane</i> <b>Holy Communion, Rowde</b>
<b>Sunday 4 July</b> <b>8.00 am</b> <i>10.00 am</i>	<b>Trinity 5</b> <b>Holy Communion (BCP), Rowde</b> <i>Holy Communion, Bromham</i>
<b>Sunday 11 July</b> <i>8.00 am</i> <b>10.00 am</b>	<b>Trinity 6</b> <i>Holy Communion (BCP), Sandy Lane</i> <b>Holy Communion, Rowde</b> <b><i>For other services in July, please check the church notice boards</i></b>

Please visit our website, for the latest information on our services: <https://www.achurchnearyou.com/church/9690/>

or check the Church notice board for further information

Or contact the Administrator:

Sarah Bowler

[sarahbromhamandrowde@gmail.com](mailto:sarahbromhamandrowde@gmail.com)

07876142112

### Private Prayer

The churches within our Benefice are also open for private prayer on the following days.

Mondays & Thursdays, St Matthew's Rowde 2pm - 4pm

Monday to Friday, St Nicholas Bromham 10am - 4pm

Saturdays, St Nicholas Bromham 10am – 4pm

Every day, Sandy Lane 10am – 4pm

**FaceBook** – There is a Thought for the Day on Monday, Wednesday, Friday and Saturday, written by Revd Heather Smith, Caroline Culley, Fran Hall or Revd Ruth. In order to see this, search for “Churches of Rowde and Bromham” on Facebook, or go to <https://www.facebook.com/groups/439328832796693/>

### Occasional videos of Bible reading and prayers –

You Tube Recorded Services

Churches of Rowde and Bromham

<https://www.youtube.com/channel/UCeEU1Oqi6iDABPgvy1LQQ>

UCEaEU1Oqi6iDABPgvy1LQQ

### Open the Book

For more information, contact Fran Hall:

07989758412 or Sarah Bowler: 07876142112

[sarahbromhamandrowde@gmail.com](mailto:sarahbromhamandrowde@gmail.com)

### Growing in Faith

For more information please contact Caroline

Culley [carolineculley1@outlook.com](mailto:carolineculley1@outlook.com)

### Mothers' Union

Please contact Carole Myer for details: 01380

850706 or [ed.myer@btinternet.com](mailto:ed.myer@btinternet.com)

### Church Cleaning

For more information contact Jane Moss on 01380

729160 [jmosscaudet@gmail.com](mailto:jmosscaudet@gmail.com) Maureen Hiscocks

01380 725406 for the brass cleaning rota.

### Choir

Choir Leader: Vacant (Choir Practise Junior and Adults will return as soon as possible).

## Bell Ringing

For further information please contact the Tower Captain: Richard Heath rich.p.heath@gmail.com/ or 01380 722379

## Flower Arranging

Flower Guild Rota

30 May & 6 June - Jayne Andrews-Wheeler

13 & 20 June - Caroline Keevil

27 June & 4 July - Leah Bevan

11 & 18 July - Carole Nutland

25 July & 1 August - Caroline Land

For further information please contact: Jane Sartin j.kartin@talktalk.net or call 01380 727446

## Regular Activities

### St Matthews Café

In church every Tuesday

Do join us for tea, coffee and a variety of home made cakes, scones and biscuits

10.45-12.00

Everyone is welcome. We sit socially distanced and comply with current covid regulations. Please sign in on arrival and use the anti bac gel provided.

## Events

### Benefice walk and picnic – Saturday June 26th

Please save the date. We're walking, together but safely spaced out, from Sandy Lane to Rowde, via Bromham Church, and finishing at St Matthew's for a picnic and game of quick cricket. Starting time; 10am at Sandy Lane.

### Rowde Tower Open event – Saturday June 26th

Come and visit the tower and find out what bell ringing is like:

- why it can be the perfect social activity for all ages (10+) and great exercise
- the world's heaviest and loudest musical instruments – exhilarating!
- for all faiths and none with no need to be musical or strong

The Church will open following the Parishes Sponsored Walk and there will be tower visit, exhibits and demonstration of church bell ringing. For further information please contact the Tower Captain: Rich.P.Heath@gmail.com or Benefice administrator: Sarah Bowler 07876142112

## Contact Details

**Rector:** Revd Ruth Schofield:

07738 858909 / 01380 850191  
revrschofield@gmail.com

**Associate Priest:** Heather Smith

07795 822515

**Lay Minister:** Caroline Culley

07557 983940

Rowde Village News June/July 2021

## Church Wardens:

vacant

**Benefice Administrator:** Sarah Bowler

07876 142112

sarahbromhamandrowde@gmail.com

**Website:** A Church Near You

<https://www.achurchnearyou.com/church/9690/>

**Benefice Facebook page:** Churches of Rowde and Bromham

<https://www.facebook.com/groups/439328832796693/>

## A Message from Revd Ruth

Did you know that St Matthew's church welcomes anyone in the parish for weddings, Christenings and funerals? You don't have to be a church regular. There are some legal details to check for weddings, but the Church of England is here for everyone, whether they have a faith or not.



Did you know that we hold Christenings for any age – in the last year a lot of families have put events on hold, but you can be Christened whether you are aged 9 days or 90 years.



Did you know that we can tailor a service to suit your needs? You don't have to be traditional if it's not your thing, as long as the essential parts are included.

Did you know that in Rowde church you can just drop in to say a prayer? We're open on Mondays and Thursdays if you would like some space for your head and your soul.

Did you know that you can have a wedding blessing in church, or a renewal of vows for a special anniversary? Sometimes couples like to celebrate an important anniversary by making their wedding vows again.

*If there's anything else you'd like to know about our church family, and what we do, please give me a call.*

**In his love, Revd Ruth**



## Canal Boat Rental

From the Wharf below  
Caen Hill Locks

[www.foxhangers.co.uk](http://www.foxhangers.co.uk)

Choose from our fleet of 14 modern narrowboats, all built new at Foxhangers

Visit our website for complete details of our

**Weekend Breaks**

**Midweek breaks**

**Weekly Breaks**

*More to Foxhangers than boat hire!*

**Bespoke boat building/Re-fits/Painting**

**All aspects of boat engineering**

**Chandlery**

**Tel: 01380 828795**

**4 self-catering units and a campsite**

available at Lower Foxhangers

Visit [www.foxhangers.com](http://www.foxhangers.com) for details

## WE NEED YOU!

Do you have some news to share or just have something to say about the village?

If you can contribute to the content of your Rowde Village News in any way or would like to give us feedback (good or bad) or discuss any magazine issues then please contact:

**Alan Watters** on 01380 724788 or by email at [watters.alan@gmail.com](mailto:watters.alan@gmail.com)

or **Suzan Jackett** on 01380 729791 or by email at [suzijj@rocketmail.com](mailto:suzijj@rocketmail.com)

## DISCLAIMER

Please note that the information given and views expressed in this magazine are generally as supplied by the contributors. Our personal comments may sometimes be expressed in the editorial on page 3 and if our views are given elsewhere, they will be credited as so. In addition, much of the local news items is sourced directly from other publications and the internet. We therefore apologise for any inaccuracies published but regrettably we have no control over this possibility happening. We will however publish any corrections notified to us as soon as possible.

*Alan Watters, Editor*

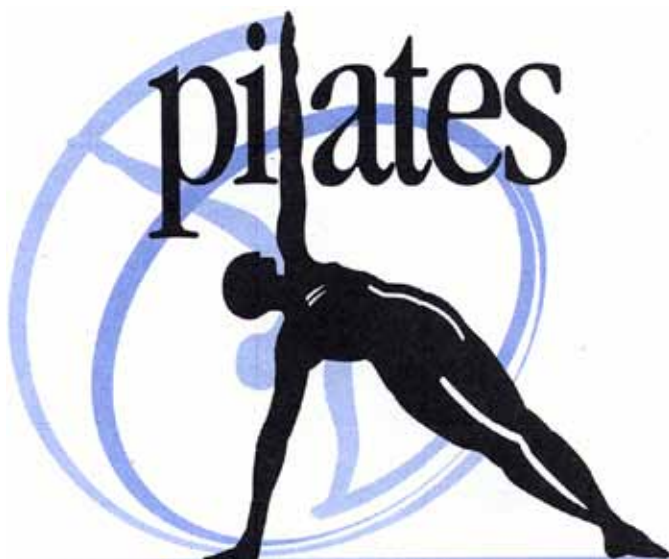
# Move.Every.Day.

## Day time and Evening Classes for Beginners and Intermediates

Re-starting when we reach stage 3 of the road map - at the earliest on 18th May

Looking forward to seeing you again very soon!

at Rowdefield Farm, Conscience Lane & Charlotte School of Dance, Bath Road



for further information

please visit my fb page

move every day pilates

&

follow me on instagram

med.pilates

for any enquiries please email

[suzijj@rocketmail.com](mailto:suzijj@rocketmail.com) or call

Suzan on 01380 729791

**PHILIP HALE**  
**Clinical Sports & Remedial  
Massage Therapist**

*Promoting a healthy body and mind*  
PRE TREATMENT POSTURAL ASSESSMENT

Soft Tissue Massage  
SPORTS INJURIES

Training & Muscle Conditioning  
Preparation

TREATMENT & PREVENTION OF: MUSCLE  
INJURY, BACK PAIN, POOR POSTURE AND  
EVERYDAY STRESSES & STRAINS

Pre, Inter & Post Event Treatment &  
Recovery

WILTSHIRE BASED & MOBILE CLINIC

Please call for an appointment

TELEPHONE: 07825180179

EMAIL: [reception@philiphalesportsclinic.co.uk](mailto:reception@philiphalesportsclinic.co.uk)

WEBSITE: [www.philiphalesportsclinic.co.uk](http://www.philiphalesportsclinic.co.uk)

INDUSTRY MEMBERSHIP AT THE  
LONDON SCHOOL OF SPORTS &  
REMEDIAL MASSAGE

## Dolman Audio Visual

Berhills Lane Farm, Sells Green, Seend  
provides

**reliable and effective repairs  
& maintenance to all makes of  
TV, Hi-Fi & video equipment**

by knowledgeable and friendly technical staff  
at our well-equipped service department

Please contact

**Maggie or Peter**

**Phone/Fax: 01380 828524**

**Email: [peterdolman@btconnect.com](mailto:peterdolman@btconnect.com)**

## DOG WALKER / PET CARE SERVICES

Does your dog spend too much time home alone? Do you find it hard to fit in regular daily exercise for your dog amongst the stresses of everyday life? Let me help you! I'm a dog walker with over 10 years' experience working with dogs and other animals. I have worked for guide dogs and have been a supervisor at a busy kennels, as well as years helping at veterinary practises. My passion for animals runs very deep and their care and welfare is of up most importance to me. I am experienced, offering a professional, caring and friendly service to dogs & their owners of all Breeds I am fully insured and first aid trained.

I have a Facebook page where you can see reviews and updates of your dogs on their walks.  
[www.facebook.com/boopeeandfriends/](http://www.facebook.com/boopeeandfriends/)

My website is [www.boopee-and-friends.co.uk](http://www.boopee-and-friends.co.uk). Feel free to message me via website or on my Facebook page. Alternatively you can call me on 07368635866.

## 4CHILDREN



What your 4Children Children's  
Centre offers

Groups and services that run from your local centre are designed for families with children under five. Your centre can provide you with information or advice on all aspects of family life, so drop in to visit us or call one of our staff team.

**For further  
information or to get  
involved, telephone  
01380 739835**



Sure Start

Wiltshire Council



## T O'ROURKE

All plastering work undertaken

No job too small

**FREE ESTIMATES**



Contact Troy on:

01380 698993

or 07968 634689

**Coronavirus (COVID-19) Travel Alert**  
**Travel restrictions may apply and**  
**transportation services are subject to change.**  
**Please check online or phone 01249 444444**  
**before you travel.**

## FUN COLUMN

*Welcome to this month's fun column, featuring classic jokes by Jason Manford:*



"I've stopped tipping. Not fly-tipping - I'll always do that."

"I'm getting my wife a wooden leg for Christmas. It's not her main present, just her stocking filler."

"Today a man knocked on my door and asked for a small donation towards the local swimming pool. I gave him a glass of water."

"An old lady at a cash point asked me to help her check her balance, so I pushed her over."

"I spent two years in therapy for my Phil Collins addiction, but I did it. Against all odds. Just take a look at me now."

"I just read that 4,153,237 people got married last year. Not to cause any trouble, but shouldn't that be an even number?"

"I phoned the local gym and I asked if they could teach me how to do the splits. He said, 'How flexible are you?' I said, 'I can't make Tuesdays.'"

"I was at a funeral the other week and I couldn't get reception on my phone, so asked the woman in front of me what the wifi password was. She said, 'Don't be so disrespectful.' I asked her if it was all lowercase but she didn't say."

"Me and my wife decided we don't want kids. So if anyone wants them, we can drop them off tomorrow."

"I changed my password to 'incorrect', so whenever I forget what it is the computer will say, 'Your password is incorrect.'"

"A pop star? I thought Kanye West was a train station."

"'Do not touch' must be the worst thing to read in braille."

**Do you have a funny story to tell? Send it in!**

## PHOTO FUN

This issue we have some amusing animal photos.



Do you have any interesting or amusing photos of people, pets or anything else? Send them in!

## The Arts Society North Wiltshire

In spite of the pandemic the society has been able to continue with their program of first class lectures which have been delivered by Zoom. Members have also had access to short talks compiled by the London Office on various art related topics. Furthermore we have linked with other local Arts Societies and, through them, have joined some "walking Tours" - notably of Mayfair, The East End and of Venice. Both these were given by professional town guides. Where ever possible we have kept in contact with members by phone and, as restrictions ease, we plan to have "hybrid" lectures. This would involve having a limited number in The Assembly Hall in Melksham and, at the same time, streaming the lecture to the remainder of the members in their homes.

### Forthcoming Lectures:

June 2nd

Travels in Rajasthan with  
Rudyard Kipling: Palaces and  
Temples, Monuments and Fort  
in the Land of Kings

July 7th

The Art of Sea Bathing

We are a friendly group who enjoy hearing about a wide range of arts based subjects. Many people from this area and beyond appreciate them – do come and join us! We meet in the Assembly Hall, Melksham for coffee and a one hour lecture.

*For more information go to [tasnorthwilts.org.uk](http://tasnorthwilts.org.uk)*

*And if you would like to join our society please contact*

*Mrs Anthea Penhallow 01225 707534 / [anthea@antheapenhallow.com](mailto:anthea@antheapenhallow.com)*

**Tom Ashpole**  
**TREE**  
**SURGERY**  
All Aspects of Tree  
Surgery Covered



**Including Hedgework And Stumpgrinding**  
**NPTC certified, Cert.Arb (RFS) Fully Insured**

**Tel 01380 699473 Mob 07929 898544**

**Email: [enquiries@wiltshiretreecare.co.uk](mailto:enquiries@wiltshiretreecare.co.uk)**

**Web: [www.wiltshiretreecare.co.uk](http://www.wiltshiretreecare.co.uk)**

# Local News



## GOING UNDERGROUND ON ROUNDWAY HILL

Have you heard about the exciting plans to remove up to 13 pylons and around 4.5km of overhead electricity line on Roundway Hill?

Putting the electricity cables underground will significantly enhance the landscape and views north of Devizes as part of National Grid's Visual Impact Provision (VIP) project, which is a national programme within AONBs and National Parks in England and Wales. The scheme in Devizes is one of the first four in the country joining Dorset AONB and the Peak District and Snowdonia National Parks in getting a landscape makeover. You can get an idea of how it might look by taking a look at the interactive 360° virtual tour which brings the scheme to life, available via the project's website ([northwessexdowns.nationalgrid.co.uk](http://northwessexdowns.nationalgrid.co.uk)).

According to Ben Smith, National Grid's Project Manager, "Roundway Hill with its tremendous history and stunning landscape is a fitting location for a VIP project. We have been delighted with the reaction from local people, parishes and organisations at the prospect of removing the pylons. Because of Covid-19 we've not been able to get out and about in the community to share our emerging plans in person, so we created the experience on our website.

"The virtual tour is an excellent opportunity for local people to take a look and find out what it's all about, both in terms of what this project will achieve and

how we will manage the construction process. You can even remove the pylons at the click of a mouse – if only it were that simple in practice! We're hopeful that with the easing of Covid-19 restrictions, we will be able to share our plans with you both online and in person later in the year."

Over the past eighteen months, National Grid has been exploring a range of potential routes for the new underground cables that would replace the pylons. Our plans have been refined with the advice of local experts and community representatives including from the North Wessex Downs AONB Partnership, Wiltshire Council, Natural England, Historic England, Wessex Water, Environment Agency and Town and Parish Councils including Rowde.

In April 2021, surveys began just south of Roundway Down, about 2km north of Devizes. But don't worry, the surveys don't mean construction has begun. There's lots still to do and we'll need to get planning permission from Wiltshire Council before we can start. All being well, we're aiming to start construction in 2023 and the people of Rowde and neighbouring parishes can look forward to a pylon free skyline on Roundway Hill from 2024.

Ben Smith concluded: "Following the successful progress of our VIP project in Dorset, we're pleased to now be working here in Wiltshire. It's really important that local people take a look at our plans and what this section of the skyline could look like pylon free."





## MOTORCYCLIST, 19, IN CRITICAL CONDITION AFTER CRASH

A 19-year-old man was being treated in hospital following a crash on May 20th.

Police are appealing for witnesses following the collision, which took place on the A342 Dunkirk Hill at around midday.



The motorcyclist, a 19-year-old man, had been driving down the hill towards Rowde.

He was initially taken to Great Western Hospital, but has since been transferred to Southmead Hospital in Bristol. His condition was described at the time as critical. The road was closed until around 2.30pm while emergency services remained on scene.

Det Con Rachel Catling, from Wiltshire Police's Collision Investigation Unit, said: "We would like to speak to anyone who witnessed the collision or who saw the motorcycle shortly beforehand. We're particularly keen to hear from anyone who might have dash cam footage which could assist our enquiries."

No other vehicles were involved in the crash, police have confirmed.

Anyone with information is asked to call Wiltshire Police on 101, quoting reference 54210048163.

## CROSS KEYS IS ONE OF SIX WADWORTH PUBS IN WILTSHIRE IN NEED OF NEW LANDLORDS

Ever fancied running your own pub?

The pub trade wasn't simple before the pandemic, and it won't be back to true normality for some time.

But new landlords are needed to help rural pubs emerge and thrive as restrictions continue to ease.

Wadworth, based in Devizes, has pubs across the South West, with a variety of opportunities for managed or tenanted roles.

They promise that "there are great rewards that come with being at the heart of the community."

Many of the roles on offer are in more rural pockets of the county, such as villages or countryside locations.

In Rowde, a fresh face is needed at the Cross Keys. Also known as the "Keys" by villagers, it has three separate trading areas, bar, dining room and skittle alley which is also used as a function room.



There is potential to develop the food on offer along with maintaining the community local feel

of the pub, continuing hosting various village and fundraising events throughout the year.

The advert states: "This is an ideal opportunity for someone wishing to embark on a first business venture within the licensed trade, or an experienced couple."

The other five 'vacancies' are at the Raven Inn at Poulshot, the Monrakers in Devizes, the Old Bell Hotel in Warminster, the Green Dragon in Market Lavington and another Cross Keys in Wanborough near Swindon.

To find out more about any of the roles, go to [www.wadworth.co.uk/run-a-pub/tenanted-pub-vacancies](http://www.wadworth.co.uk/run-a-pub/tenanted-pub-vacancies).

### FALLEN TREE IN HIGH WINDS

We have had some atrocious weather since the last magazine issue and a huge tree opposite the entrance to Silverwood School was just one casualty in the village.



### NEW WILTSHIRE COUNCIL LEADER, DEPUTY AND CABINET CONFIRMED

At Wiltshire Council's annual meeting, Richard Clewer has been confirmed as the new leader of Wiltshire Council and has appointed his cabinet.

Cllr Clewer, who represents Downton and Ebble Valley, has sat on the council since its inception in 2009 and until recently was the deputy leader under councillor Philip Whitehead, as well as the cabinet member for housing, communities, climate change, arts, heritage, tourism and corporate services.



*Richard Clewer with his cabinet outside of County Hall in Trowbridge*

His deputy over the next four years will be Bromham, Rowde and Roundway councillor Laura Mayes who in the previous administration held the cabinet role for children, education and skills.

The new local authority leader said: "It is a huge honour to be given this responsibility and I'm privileged to lead Wiltshire Council and represent its residents. People can be assured my team and I will work tirelessly to ensure this council delivers for them."

The council leader continued: "I've picked a talented team of people as my Cabinet and Portfolio Holders and we're all looking forward to working with the council's leadership team and officers to help achieve our collective vision. We have a lot of work ahead of us to help Wiltshire recover following Covid-19 and its undoubted impact going forward, but we will support residents and businesses to thrive so that Wiltshire continues to provide opportunities and be a place that people want to live, work, and visit. As well as the recovery work, the climate emergency will rightly continue to be at the heart of our decision making."

### LOCAL ART SHOP NOW ONLINE

The Lawrence Art Society now have an online shop which features local artists. Have a look through some wonderful artworks at:

<https://lawrenceartsociety.co.uk/shop/>





## ROWDE COMES TOGETHER TO 'SAVE FURLONG CLOSE'

As voters headed to the polls people in Rowde called for Furlong Close to be the priority for elected councillors.

The care facility has been the centre of debate since last year, when plans were announced to close the site.

Furlong Close in Rowde houses 34 people and also has a day centre for non-residents.

The families of residents living there have since been invited to be part of the process of finding a new provider for the site, according to Wiltshire Council.

The final stages of this are said to take place in June with families of residents involved in the interview process.

On Wednesday, May 5th, families and their supporters took to the streets of Rowde.

Armed with balloons, banners and personalised face-masks, they manned the side of the road as cars honked in support as they drove past.

Bromham resident Caroline Culley, a member of the local church, said: "The way these people have been treated is appalling. Furlong Close is a huge part of the community, none of us want to lose it."

Mark Mangham, a Liberal Democrat candidate in the election, added: "Furlong Close should be a good news story for Wiltshire, given how well it has integrated into the wider community. But sadly that has not been the case. I don't think the council has reacted quick enough, or realised the public feeling on the issue."

He called for cross-party work on Furlong Close.

Penny Goodwin, a day service user at Furlong Close, also took part in the 'protest'.

She added: "I would really miss going there. I've been going there 30 years and we do so many nice things like gardening, swimming, all sorts."

The families have called for the future of Furlong Close to be a priority for the council moving forward.

Furlong Close is home to 21 Wiltshire Council-funded residents and 14 residents from 13 other local authorities.

In her final day in the role, Councillor Anna Cuthbert said: "I couldn't be more proud to be standing alongside the Friends and Family of Furlong Close raising awareness of the campaign to save the homes of residents, who want to stay as part of this lovely village rather than be moved elsewhere."

Trish Gange, whose daughter Katie lives at Furlong Close, thanked those who had come out in support. She said: "The generosity of spirit and kindness has been fantastic to see today. Now, we want to see real commitment for the future of Furlong Close."

In February it was stated that Hft who runs the Furlong Close would be closing its contract but said the site would be available for the next two years. Since then, Wiltshire Council has been in the process of finding a new provider.

Cllr Laura Mayes, cabinet member for children, education and skills, added: "It is essential that we find a long term viable plan for Furlong Close residents. I was pleased to update Rowde Parish Council that a number of alternative care providers have made submissions to Wiltshire Council to continue care at Furlong Close. These submissions are being reviewed by council officers."

Corporate director for people at the council, Lucy Townsend said: "We know families and friends at Furlong Close are anxious for a decision to be made for Furlong Close and we have invited family members to be part of the process to find a new provider for the site. Family members will be involved in an interview that will form part of the tender evaluation as it is important we take on board their views before any decision is made."

Responding, the Friends and Families of Furlong Close (FAFF) said in a statement that a new provider to cover the next two years does not address the long-term fear of the residents being evicted. They added: "And what is that care provider being engaged to do? To oversee the closure of Furlong Close over the next two years. This hardly qualifies as 'decisive action' to save the vulnerable residents of Furlong Close from the trauma of being evicted from their long-term homes."

## FURLONG CLOSE UPDATE

I am sorry to have to report that the future of Furlong Close is still very much in doubt and that the continuing uncertainty is weighing heavily on the residents, their families and the staff. There have, however, been some positive developments which give us hope for the future.

The campaign to save Furlong Close was active in the weeks leading up to the Council elections as we tried, in a non-political way, to keep the plight of our vulnerable relatives front of mind for the candidates and win their support. Many readers may have seen some of our advertising in the Gazette & Herald and Wiltshire Times and the (socially distanced) public demonstration of support in the village, which is reported on the previous page in this magazine. The families and friends of Furlong Close continue to be overwhelmed with the strength of local feeling and are extremely grateful to the people of Rowde for their support. A heart-warming recent instance of this was the drafting by the children of Rowdeford School in March of "to whom it may concern" letters appealing for Furlong Close to be saved; for example:

"I have heard furlong close is closing and I am very angry about it. You can't just kick someone out of their home especially because they have severe learning difficulties and can't deal with change as well as we can." (Sophie)

"It's their home and if they feel loved and safe then no-one has the right to take it away from them." (Douglas)

"We are Rowde and so are they. Without them Rowde wouldn't be Rowde and who it is so we need them and they need us. We are a community." (Alex)

Many thanks to the students of Rowdeford School for their wisdom and support.

To whom it may concern,  
I don't think it's right how we might take away a place where vulnerable people feel loved and wanted. Some people can't handle change, and find it hard to do things differently. The people who live there have created amazing friendships and if you shut Furlong close it's almost taking away those friendships.

As a Rowde Student I think it's unfair that you are taking away a part of Rowde - Every person in Furlong close feel safe there and don't want to go. They enjoy having a place they can depend on to always be there

Your faithfully, Florence

To Whom it may concern,  
I am writing to you on the issue of Furlong Close closing. As I feel that it's extremely inconsiderate to kick them out of their home. The people living there must be struggling with the pandemic, but to pull on the prospect of having no home is terrible.

At Rowde School, we follow the values of Respect, Optimism, Wisdom, Determination, Enthusiasm and Love. We also follow "We are Rowde, And Rowde is where they are too. We are a community and they are part of that community. They live here, they work here, and they are part of every-thing we do."

Lots of people have friends because of Furlong Close, and the people living there make friends with the other people there and if you shut it down, they may not be able to see them any more.

Yours faithfully, Emily

To Whom it may concern,  
Here at Rowde school we believe that it's not fair on the residents of Furlong Close to shut the safe home down. It's their home and if they feel loved and safe then no-one has the right to take it away from them.

Change is difficult especially for people that have severe learning difficulties. Rowde is a community and if the care home is taken away then that is a part of Rowde taken away.

It will be particularly hard because they have made friends and if they were to be parted then they may feel lonely and especially if the residents don't know where they are going.

I hope that you may consider this.

Yours faithfully Douglas

To whom it may concern,  
I feel like Furlong close should stay open since there's people there with severe learning difficulties. It might be hard for them to be in a change at the click of a finger and most of the people there don't even know where their new home might be, which can be scary and overwhelming at times, specially with covid they've had to go through the pandemic and now they have to go through moving.

We are Rowde and so are they. With out them Rowde wouldn't be Rowde and who it is so we need them and they need us. We are a community.

Yours faithfully Alex

To whom it may concern,

Here in the Rowde community, we really don't want Furlong Close to close, as it's part of our community. It's like if you take something out of a body, it won't work, and it's a key attribute for here. At Rowde Academy, we say 'we are Rowde' and so are they, and if you take their home away, some people can't cope with change.

Furlong Close should not close, here are a few reasons why: people there can be seen out, and some even work at local business. So it's home for lots of people and they feel safe there, they have already been overwhelmed by the pandemic and it's not right to throw something else at them, and overall it's just unfair for them. When would you like it if somebody walked up to your house and kicked you out?

I hope this will change your mind, keep it open and listen to my opinion.

Yours faithfully, Will

To whom it may concern,

Furlong Close is a wonderful attribute to the Rowde community. The community here is their home, their safe place, and a place where they can be who they are. Rowde Academy is a part of that, and so it is our job to act on the matter.

We are in the middle of a pandemic, so already unable to cope with the chaos around them, this doesn't make it much better. Many autistic people struggle with change. This is unfair to those that have lived and visited Furlong Close for years and love it there. We are Rowde, and so are they.

Yours sincerely,

Mia

To whom it may concern,

I have heard Furlong Close is closing and I am very angry about it. You can't just kick someone out of their home especially them because they have severe learning difficulties and can't deal with change as well as we can. Shutting Furlong Close is like cutting a body part off the body. It wouldn't work properly. That's what the village would be like without Furlong Close. Our school values are enthusiasm, determination, wisdom, love, respect and optimism but we want you to think about that before you close their home and take people's jobs away. They have been through enough and are overwhelmed because of the pandemic. Don't close their home, it will be unfair! They are friends with everyone there and might not see each other again. We are Rowde and so are they!

Yours faithfully,  
Deputy head, Gert Sophie

To whom it may concern,

Furlong Close is a place which helps the people who live there. They have already been through a pandemic and that was overwhelming. Furlong Close residents have extreme learning difficulties that are very severe and if they don't live here, they can't take care of themselves as change is difficult for them. They also feel more safer here, because they might have someone to talk to if they're worried about something or if they have a panic attack. It is their home and nobody can take that away from anybody. It's also good for the community if Furlong Close is here, because without it, Rowde wouldn't be as great as it is now. With great respect, please reconsider that Furlong Close will stay open. People will have hard lives without it, and that wouldn't be good for the community.

Yours Faithfully,

Rowde Sports Captain, Isabelle

Now the Council elections are over and we have a new Council, which we are hoping will work with us to save Furlong Close for its current and future residents. Encouragingly, more than half of the elected Councillors have made statements in support of saving Furlong Close for its vulnerable residents and those supportive Councillors include several members of the new Cabinet. These include:

- Laura Mayes, the Councillor for Rowde, who is also Deputy Leader of the Council and Cabinet Member for Children's Services, and now numbers the residents of Furlong Close among her constituents. Laura has pledged that she "will work with Wiltshire Council colleagues and the residents and their families to find a long-term viable plan for Furlong Close" and the residents and their families are depending on her, as their local Councillor, for that support;
- Simon Jacobs, formerly the Cabinet Member for Adult Social Care and now Cabinet Member for Public Health, has acknowledged that "the vast majority of the residents would like to stay and see out their days at Furlong Close", and has said that he and Cllr Mayes feel "very strongly" that this is the right solution and are working "with all the power we have" to ensure that this happens;
- Jane Davies, the new Cabinet Member for Adult Social Care, has said that she is taking a close and careful interest in this important issue and has already reached out to the families to meet with us;
- Phil Alford, the Cabinet Member for Housing and Strategic Assets, who has

said that he understands the wishes of the residents and their families and supports a settled future for the residents; and

- Nick Botterill, the Cabinet Member for Strategic Planning, has said that he will be giving this “important and contentious” situation his full attention and will be guided by the best long term interests of the residents.

More than 6 months has passed since the proposed closure of Furlong Close was announced in October last year, but the only meetings the families have had with Council officers in that time have been to “listen to our concerns”. What the families now desperately need and want to do is sit down with the Council leadership and have genuine, positive and substantive discussions about a long term future for Furlong Close. With the above supportive statements in mind, we are imploring the Cabinet and the Council to engage with the families now and talk with us about how Furlong Close can be saved.



*The campaign's window poster (being distributed with your magazine)*

We are asking the people of Rowde to please help us in this effort by putting the small poster being circulated with the magazine in their window and sending a link to our petition to their friends and family to help us get to 50,000 signatures - <https://www.change.org/p/hft-and-wiltshire-council-stop-the-closure-of-hft-in-rowde> . Thank you again for your support to save Furlong Close.

**Mark Steele (for the FAFF group)**

## ROWDE ANNUAL VILLAGE MEETING

Thursday 19th May 2021 at 7.00pm in Rowdefield Farm

This was the first Annual Village Meeting since 2019 and the first physical meeting that the Parish Council has hosted since March 2020.

There were 13 online attenders, and 12 people attended in person.

During the meeting, the Parish Council accounts for 2020-21, budget for 2021-

22 and update from the Parish Council were presented. In addition, there were representatives from some of the village groups who gave updates on their year gone by and their year to come.

## Furlong Close - Friends and Family

Trish Gange, a parent of a resident of HfT and a member of the Friends and Family support group, thanked the community in Rowde for their support since the announcement that HfT was to close its site at Furlong Close. Some of the residents are still distressed about the news and are becoming unwell because of it. HfT has given notice to Wiltshire Council that they will cease providing care on the site at Furlong Close, which expires this month. HfT has agreed to lease the site for up to two years. There are restarting the day services, and the 'sow and grow' project.

Antonia Field spoke as the Chair of the Family and Friends group. A new care provider will be put into Furlong Close for two years. Antonia noted that there are plans to sell the site eventually. The Friends group view this as an emptying process. Wiltshire Councillors have expressed support, but it still appears to be the intention to close the site in the long term.

It was re-iterated that Furlong Close is not an isolated community. It is much loved and integrated, and its residents are at the heart of Rowde, and that view is strongly supported by the Parish Council.

Sue King spoke as a mother of a resident. Sue spoke about how happy her son is at Furlong Close and how he wants to stay there.

The Parish Council supports the Family & Friends of Residents at HfT in every way that it can.

## St Matthew's Church – Rev Ruth Schofield

Throughout 2020, the church has continued to serve the village. From March to July, services were held over zoom.

The Church team posted a 'Thought for the Day' on the Churches Facebook page, which was read by many people who are not regular worshippers, and they filmed services that were watched on YouTube. At Christmas, they filmed a Carol service which had over 170 views online. They also filmed a service for All Souls, and another for Remembrance, which was seen on YouTube 62 times.

There was an online Christingle service, and a live nativity outdoors in the Churchyard, with donkeys from the Rowdey Cow. Throughout the year, funerals were held in the church, in the graveyard and in the crematorium.

As far as possible, the church has been kept open for prayer, and also open for weddings and baptisms – there was one wedding in September last year.

Bellringers have started ringing again, and key moments in the year have been marked, for example Prince Philip's death, the 75th anniversary of VE Day and other moments by holding prayer services.

The church has continued to support the school through the pandemic.

If anyone in the village who would like support, a chat or a prayer, please get in touch with Rev Ruth.

### Rowde Primary School - Mr Jon Edy-Berry

The school was supportive of the recent HfT protest.

There was an update on the situation with the school swimming pool. The pool was vandalised in the summer of 2020, causing over £8k worth of damage. The Acorn multi-academy Trust has said that the pool is costing money which could be spent on education and the school will have to look at whether it is still viable. The pool no longer meets Key Stage 2 swimming lesson requirements.

There is an ongoing parent consultation taking place asking views on whether the swimming pool should be retained by the school. It is agreed that views should be sought from the wider community.

A question was asked about how much it costs to maintain the pool for a year. Mr Edy-Berry said that he would share the maintenance figures.

It was noted, by a Parish Councillor, that there was planning permission to put a roof over the pool. This permission would have elapsed now, but the paperwork could be used again to make a new application.

It was agreed that a working group would look at repair costs, overall ongoing maintenance costs, looking at improving the pool to meet the requirements for KS2 teaching and the lapsed planning application to put a roof over the pool.

Mr Edy-Berry emphasised the importance of the school and community working together.

### Rowde Village News – Julie Baker

The Rowde Village News is now a bi-monthly publication. The decision to produce an issue once every two months was down to cost and the huge amount of volunteer time that it takes to produce each issue.

A request was made for donations last year to keep the magazine afloat. Lots of people came forward with donations. The bi-monthly issues can now be maintained through regular advertisers.

Thanks were given to all of the distributors.

### Laura Mayes – Councillor for Bromham, Rowde & Roundway

Cllr Mayes was elected in the election on 7th May, as the Councillor for the newly formed ward of Bromham, Rowde & Roundway'.

Cllr Mayes has attended most of the Rowde Parish Council meetings for the past two years and is up to speed with local issues.

Cllr Mayes gave an update on the current situation with HfT. The last meeting that was held with families of the residents was on 29th April. Wiltshire Council is looking for a new provider to take over care on the site. Wiltshire Council pays for the residents' care but does not provide care itself. It was noted that Richard Clewer is now the Leader of Wiltshire Council. Laura Mayes is his Deputy Leader.

J Dalley met with Cllr Mayes at Silverwood School on 18th May to discuss traffic issues around the proposed expansion of the school.

A question was asked about when the new election for the role of the Police & Crime Commissioner will be held. The election will be on 18th August. It was noted that the cost for this re-election will be borne by central government and not Wiltshire specifically.

### National Grid – V.I.P project

National Grid is making good progress as it forms its plans to remove up to 13 pylons and around 4.5km of overhead electricity line on Roundway Hill. Putting the electricity cables underground will significantly enhance the landscape and views north of Devizes.

In April 2021, surveys began just south of Roundway Down, about 2km north of Devizes and are expected to be completed by the end of the month.

These surveys don't mean construction has begun. There's lots still to do and National Grid still need to get planning permission from Wiltshire Council before work can start. All being well, they are aiming to start construction in 2023 and the people of Rowde and neighbouring parishes can look forward to a pylon free skyline on Roundway Hill from 2024.

***Thank you to everyone who presented at the meeting and to everyone who attended.***

### LOCKDOWN CHARITY CUT-OFF!



**BEFORE**

**AFTER**

RVN editor Alan Watters stopped shaving early on in the pandemic and said that he wouldn't cut the beard until the virus was defeated. It began to look like he would end up tripping over it though, so he decided to cut it after getting his second job and try to raise some money for two charities dear to his heart in doing so. Well the deed is now done (see photos) and as he is currently not far off reaching his targets of £1000 for each, it would be great if you could donate something, anything, to help him get there.

To donate, please look up his posts on 'Rowde all about it' or go to the JustGiving website and search for 'Alan Watters'. The two worthy charities are 'Children with Cancer UK' and 'Headway', the brain injury association.

***Thank you so much, Alan x***

# ROWDE MEMORIES

## CHARLES HENRY LOWE d.1909

(submitted by Jenny Lund)

I was recently contacted by an Italian journalist who wanted to ask various questions about Mr Charles Henry Lowe. He was writing from a town in Italy called Bordighera, which is on the Italian Riviera about 13 miles east of Monaco. I could not at first understand why anyone in Bordighera would be interested in a Victorian/Edwardian English gentleman who had lived in Rowde. How wrong I was!



Charles Henry Lowe

I knew that in St Matthews Church there were various plaques on the walls to the left and right of the altar and, although I had read and was aware of them, I had just assumed they were to remember a wealthy Victorian who had been generous to the church. In order to answer Pier Rossi's questions, I had to do some digging into village history and consulted Barry Barrett and Google to find out more and also visited the history centre in Chippenham to find his obituary in the Devizes and Wiltshire Gazette of 15 April 1909.



St Matthews Church

Charles Henry Lowe was born in 1828 in Gibraltar, where his father, a Liverpool Shipping merchant had moved the family. They were involved in the South American trade, particularly Brazil, and Mr Lowe became a partner in the "well known" shipping company



Rowde Hall, where Charles Lowe lived and died

Phipps Bros. and Co. He became the resident partner and manager of the company in Brazil and lived in Rio de Janeiro for several years. He travelled some 80,000 miles during his lifetime, his first voyage being to Rio.

He lived in Rowde Hall, and in fact died there on Easter Sunday 1909. He had become wealthy and had made enough money in the shipping trade to be able to retire at the age of 48. He was not particularly robust and, along with a great many other English ex pats, discovered the Italian Riviera and wintered there for over 30 years. He loved Bordighera and bought a small, unpretentious property called Casa Rossa. Although the house was small, there was a lot of land attached to it. Over a period of 30 years, he gave land and money to create a public garden, Giardini Lowe, the first tennis courts to be built in Italy, an Anglican church, cemetery and vicarage, theatre and many other things. He is remembered to this day in Bordighera with great affection as a "generoso benefattore" and his portrait hangs in the Council Offices.

He was equally generous to the village of Rowde, though why he came to live here seems to be pure chance as there was no family connection. In September 1889, the Devizes Gazette and Herald records that he gave a tea and amusements into the evening for the children and the "Aged Poor" of Rowde and one imagines this was a regular event.

Many a parish in the district benefited from his generosity including the Beauchamp Chapel at Johns Devizes. He paid for the heating system at St John and the chapel fittings. The Literary and Scientific Institution of Devizes is in its present premises "largely – nay chiefly – as the result of his successive gifts".



## ROWDE MEMORIES

In St Matthews to the right of the altar there is a beautiful stained-glass window given as a "thank offering" for "having worshipped for 21 years in this church AD 1885 – 1909". He donated the elaborate and very heavy (and difficult to clean) lectern, in memory of the ill-



*The beautiful stained-glass window given by Charles Lowe as a "thank offering"*



*The elaborate lectern donated by Charles Lowe*

fated General Gordon of Khartoum. He paid for the tiling up the main aisle and round the altar and for repairs to the chancel roof. To the left of the altar is a brass plaque which says "The reredos was completed by Parishioners and friends Whitsuntide 1910" with the quotation, "He being dead yet speaketh", so I think we can also assume that he paid for that too.



*The brass plaque dedicated to Charles Lowe*

He treated his servants as friends and often referred to them as his "faithful stewards". The last 2 years of his life were spent in Rowde as he seems to have become an invalid and was unable to visit his beloved Bordighera again. When he knew he was dying, he paid for his Italian gardener of 34 years to travel to Rowde in order to bid him farewell and greeted him with the words "my dear son, how are you." Miss Clements, his faithful housekeeper and many other servants seem to have worked for this kind, modest and generous man for many years.

Upon his death he left the church a bequest of £500 and a bequest of £200 to what is now our village hall. He also left £25 for the upkeep of the churchyard and his grave. His obituary in the Devizes & Wiltshire Gazette of 15th April 1909 describes him as an admirable type of man in the truest sense of the word.

It would appear that he was determined to die on Easter Day and achieved that aim as the bells of Rowde church tolled for the evensong service of 11 April 1909. The pall bearers and others attending the funeral, included the names Mr George Dally, Mr G Flower and Mr Perret; names still known in the village. I have tried to find his grave in the churchyard but without success. In keeping with his modesty and austerity I think it must be because it does not stand out in any way.

I think we can be pleased that such a modest, kind and generous man lived in this village and did so much good with the wealth he accumulated.

# ROWDE MEMORIES

## LOVELY MEMORIES OF ROWDE VILLAGE FETE AND DEVIZES SCHOOLS SPORTS DAY

These are newspaper cuttings from 1969 sent in by Maggie Cerretelli:



*Penny Hollow, Mary Cledford, Sarah Allman and Sonia Hendry, Rowde pupils taking part in the Devizes Area Primary Schools Sports Day*



*Three year old David Cledford who took part in the Rowde British Legion fancy dress competition and carnival*

Thank you Maggie, they are wonderful images of some good times in Rowde's history.

## VIOLA'S 90th BIRTHDAY PARTY!



Recognise anyone?

*Photo supplied by Moira Hayter*



## FARM FRESH LOCAL PRODUCE

**We only source the best local products from our own farm and local producers, all bursting with flavour and reasonably priced**

Poulshot Lodge Farm, Poulshot, Devizes, SN10 1RQ

Tel- 01380 827202

Open Tuesday – Friday 10am-5pm, Saturday 9am-4pm

For more information, to follow our blog or subscribe to our newsletter visit

[www.poulshotlodgefarm.co.uk](http://www.poulshotlodgefarm.co.uk)

find us on Facebook & Instagram as well



@poulshotlodgefarm

*Theodora Wildcroft*



ROWDE VILLAGE HALL

WEDNESDAYS 10.30 AM - 12

Full term, concession and drop-in rates available.  
Beginners and experienced yogis are welcome.  
Call or email for bookings and further details.



theo@wildyoga.co.uk 07818401110 www.wildyoga.co.uk  
Rebalance mind, body and soul with a smile.

## Martina's Professional Cleaning Services

Is cleaning and ironing taking up your valuable time?

We guarantee the best price for the perfect job

Regular Cleaning

Spring Cleaning

Office Cleaning

Oven Cleaning

Window Cleaning

Carpet Cleaning

Ironing

Fully insured and absolute privacy assured

The same regular cleaner guaranteed

Call Martina on 07859818198

## JOHN STUART FUNERAL SERVICE LIMITED

18 The Britox  
Devizes  
Wiltshire SN10 1AJ  
Tel: 01380 729459



Funerals Arranged  
24 Hour Service  
Private Chapel of Rest

## ROWDE VILLAGE



Have you visited the village website yet? You will find it at [www.rowdevillage.org](http://www.rowdevillage.org)  
(Amongst many other things, you can see your Rowde Village News in glorious full colour!)

Please note that our Rowde Village website manager is Rebekah Jeffries and she can be contacted at rowdeparishcouncil@gmail.com or 01380 720988.

# Trevor Hale

NPTC Certified (arb) Fully Insured

City &  
Guilds  
NPTC



## Tree Surgery

Felling ▪ Reductions ▪ Dismantles  
Chipping ▪ Stumpremoval ▪ Hedging

Very Competitive Pricing

07737 934777

[www.wiltshiretreesurgery.co.uk](http://www.wiltshiretreesurgery.co.uk)

Seend Cleeve

*arts*  
together ...ageing creatively

Is an award-winning local charity, seeking to reduce loneliness and isolation and in doing so improve health and well being for vulnerable elderly people through participation in the arts. We run weekly sessions in Pewsey, Marlborough and Devizes and are looking for friends and supporters to join us in fundraising, raise local awareness and help at our sessions.

### COULD YOU PLEDGE SOME TIME IN 2017 AND HELP BY?

- **Businesses:** Adopting us as your 'Charity or Choice' or supporting us in other ways?
- **Individuals:** Help spread the word in your community, join our 'friends' scheme, run a fundraiser for us, help promote our work?
- **Groups:** We have plenty of ideas and resources to support groups involvement

For more info about our activities or being involved

[liz.lavender@artstogether.co.uk](mailto:liz.lavender@artstogether.co.uk) / 07780860922

[www.artstogether.co.uk](http://www.artstogether.co.uk) Registered Charity 1109432

## HAIR AT HOME

### ROWDE

Hairdressing salon style in  
Rowde or mobile, you choose!

Contact Louise Allan on 07811 948374  
or Email [louiseallan\\_1@hotmail.co.uk](mailto:louiseallan_1@hotmail.co.uk)

Very experienceds ex salon stylist

Cutting, families, colouring, perming,  
children welcome



HAIR AT HOME

experience a little hair magic

## Rowde Village News Pledge

The Rowde village News is independent of political parties, private interests and government. Our policy is to provide readers with a complete, fair, accurate and balanced news and information service.

Although we are a voluntary run, nonprofit making publication we still do our best to adhere to the Press Complaints Commission's Code of Practice. While we try hard to avoid mistakes, some errors can occur during the part time and hectic process of producing one of Wiltshire's largest and most regarded village magazines (apparently, from feedback received over recent years).

Our policy is to correct errors of fact as soon as possible and, where appropriate, apologise. If you find an error of concern, please contact the editor (contact details on page 3).

Thank you for your continued support and understanding.

**Alan Watters, Editor**

# Wiltshire Mind



Your Local Mental Health Charity

Depressed? Anxious? Stuck? Grieving?  
Stressed? Not Managing?

## **COUNSELLING SERVICE**

A safe, confidential and personal place to talk, and help you to move forward

A low cost counselling service in the community for all

**Initial Assessment Free of Charge**

For further information please contact:

Wiltshire Mind  
24a High Street  
Melksham  
SN12 6LA

Email: [counselling@wiltshiremind.co.uk](mailto:counselling@wiltshiremind.co.uk)

Phone 01225 706532

Reg Charity Number: 1113751 Reg Company Number: 5498430

**Are you age 60+?**  
Come and join our friendly exercise class and help maintain/improve your mobility  
(Exercises may be done seated or standing)  
**Mondays**  
2.30pm – 3.30pm  
followed by coffee/tea and a chat at Rowde Village Hall  
**Cost : £3.00**  
For more information contact:  
Yvonne 01380 723086  
[yve@thegablesdevizes.co.uk](mailto:yve@thegablesdevizes.co.uk)



*Lending with Heart and Mind*

**Wiltshire Council fund a not-for-profit loan scheme for homeowners.\***

If you have lived in your home for over 5 years and:

- Are over 60; or
- Are in receipt of State Benefits; or
- Have children under 16 living with you.

You may be eligible for a home improvement loan to keep your home warm, safe, and suitable for your needs.

Lendology CIC work in partnership with Wiltshire Council to deliver the council subsidised loan scheme. Our knowledgeable team of advisers will guide you through the process of applying.

To book a no-obligation assessment, or for more information, visit [www.lendology.org.uk](http://www.lendology.org.uk) or call 01823 461099.

Heatherton Park Studios, Bradford on Tone, Taunton, TA4 1EU

\*subject to eligibility

# Easterton Vehicles Ltd.

ATA Automotive  
Technician Accreditation  
Master Technician AT 1803087958

**Independent**  
**BMW, Mercedes, VW, Audi**  
**and Skoda Specialists**  
**at less than 1/2 dealer prices.**  
**All Makes Mot's & Servicing.**

Award Winning Knowledge Of Modern Motor Vehicles  
Champion Bright Spark 2006 - 2nd  
Auto Trade Technician 1999 - Winner

**John Kyte, Director**

Unit 1 Hillcroft Farm, 5 Easterton Sands, Devizes  
Wiltshire, SN10 4PY

Call: 01380 812192 or 01380 816436

[www.eastertonvehicles.com](http://www.eastertonvehicles.com)

# HESTIA

## SOFT FURNISHINGS

For beautiful handmade curtains, blinds, loose covers and soft furnishings.

Browse through pattern books from James Hare, Warwick, Elanbach and many more.  
Free measuring and quotations.

Telephone 07982 985925  
01380 859949  
01249 815334



## Adams Renovations Property Services



[www.adamsrenovations.co.uk](http://www.adamsrenovations.co.uk)

For All Your Property Requirements:

Painting, Decorating (interior & exterior)  
Tiling & Flooring  
Paving, Decking & Patios  
Guttering & Facias  
Light Building Works  
Repair & Renovation Work  
Bathroom Specialists

Competitive prices from an honest & reliable worker.  
No job too small. All areas of Wiltshire covered.  
Fully insured. References available.

Email: [info@adamsrenovations.co.uk](mailto:info@adamsrenovations.co.uk)  
Telephone: 01380 500549  
Mobile: 07725 638165

## FREE CAT NEUTERING



Do you want to neuter your kittens and cats?



You know it's the right thing to do, and.. **we are here to help you!**

### RSPCA Wiltshire Mid Branch

will pay, for a limited period, the cost of neutering and, at the same time, micro-chipping your cats and kittens if you live in **Devizes, Melksham, Westbury or Warminster** or the surrounding villages.

To apply for financial help to have your cats neutered, and, if you wish, micro-chipped at the same time, please send a blank e-mail to [cnwiltson@gmail.com](mailto:cnwiltson@gmail.com)  
We will reply with a link to the application form.  
If you prefer you can telephone 07494-240622

**YOU CAN APPLY FROM 25TH FEB. UNTIL 30TH APRIL 2021**



Wiltshire Mid Branch  
Registered charity no. 205925

Working together to help you and your pets



Registered charity no. 203641



**Food Deliveries & Call & Collect available from our Farm Shop at Lower Farm**

**Fresh local Meat Products, Fresh Bread & Cakes Daily, Fresh Fruit & Veg Daily, Dairy, Cheese, Yogurts, Dried Goods, Sweets & Chocolate and lots more**

**Free Delivery to our local Rowde Residents – Just get in touch and let us know what you need**

**[www.spottydogfarmshop.co.uk](http://www.spottydogfarmshop.co.uk)**

**Phone: 01380 720002**

**Email: [hello@spottydogfarmshop.co.uk](mailto:hello@spottydogfarmshop.co.uk)**

**Facebook Message our Page**

**[www.facebook.co.uk/spottydogfarmshop](http://www.facebook.co.uk/spottydogfarmshop)**

# The George and Dragon

Tel: 01380 723 053 - Email: gm@thegeorgeanddragonrowde.co.uk

## The G&D Summer Events

### **G&D Summer Party: Sunday 18th July 5pm – 10pm**

Come and join us for Village BBQ, Karaoke & Dancing  
Complimentary drink on arrival before the delicious BBQ  
(Homemade chilli burgers, sausages, king prawns, tuna steaks, chicken satay, loads of various salads, pudding & cheese!) Adults £25 & Kids £10

**\*\*\*Please purchase your tickets by Monday 12th July\*\*\***

### **Sunday Quiz Nights - 4th July & August 29th**

Both Sundays at 6pm

Teams of 4 people @ £10pp inc. baguette supper at half time

Please call to register your team

*NB: We are also thinking to hold a weekly Sunday night quiz league throughout the winter months – watch this space!*

### **G&D Secret Walled Garden**

Is now open with a covered pergola, festoon lighting & picnic benches – ideal for private parties up to 20 people and is the perfect sun trap to come and relax with a pint...

### **The new Potting Shed table**

We've got a new table that holds up to 6 people and everyone is raving about it... Come and have a look for yourself – perfect for summer Alfresco dining with a roof & heater....

*Thank you for your continued support and as always we look forward to seeing you at the pub. If you are new to the Village come and say hello & claim your complimentary first drink!*

*Chippy, Tom & The G&D Team*



WHISTLEY CANINE COUNTRY CLUB



WHISTLEY CANINE COUNTRY CLUB  
AND CATTERY

**Our Modern Luxury Heated Cattery  
For Tiny Tigers is Now Open**

Luxury Holiday Venue For Our  
Canine Friends  
Spacious Suites Under-Floor Heating  
Day Care Facility Inspections Welcome  
Potterne Devizes  
01380 738189/726330  
Please see our website for more details  
[www.whistleykennels.co.uk](http://www.whistleykennels.co.uk)

**ROWDEY GOW**

Locally Sourced Food  
Children's Play Area

Spectacular Views  
Miniature Ponies

Delicious Home Made Ice Cream  
made using our own milk fresh from the farm

**FARM CAFE &  
ICE CREAM PARLOUR**

Open 7 Days a Week

**Taste of the West South West England GOLD 2016**

**Taste of the West South West England GOLD 2015**

**Cooked Breakfasts**  
Full Lunch and Snack Menu  
Children's Menu Available  
Ice Cream Available All Day  
Home Made Cakes and Cream Teas  
all our food is freshly made from local produce

Lower Farm, Devizes Road (A342), Rowde, Nr Devizes SN10 2LX  
Tel: 01380 829666 | [www.rowdeycow.co.uk](http://www.rowdeycow.co.uk)

## The Tranquil Moment

HEALTH & BEAUTY CLINIC

Unit 2 Manor House Yard, Poulshot Road, POULSHOT,  
DEVIZES, WILTSHIRE SN10 1RY

**TELEPHONE: 01380 828297**

[www.tranquilmoment.co.uk](http://www.tranquilmoment.co.uk)

email: [tranquilmoment@live.co.uk](mailto:tranquilmoment@live.co.uk)

**Decleor facials,  
microdermabrasion, massage,  
sports massage and injury clinic,  
shrinking Violet fat loss body wraps,  
CND shellac and Brisa Lite  
sculpting gel nails, CND manicure  
and pedicure, Apilus electrolysis,  
CACI non surgical face lift,  
Decleor and CND stockist**

*Please call Jo at The Tranquil Moment Health and  
Beauty Clinic to make an appointment*

**Call us or follow us on Facebook for up  
to date offers and news**

## VILLAGE DIARY

### Parish Council Meetings

(All Wednesdays 7.30pm - venues to be confirmed)

9th June, 14th July, No meeting in August,

8th September, 13th October,

10th November, 8th December

### Other Events

9th June - Bag a Bargain - page 46

26th/27th June - Open Garden - page 47

July Weekends - Rowde Open Studios - page 2

4th July - Quiz Night - page 40

7th July - Art Society Lecture - page 23

18th July - G&D Summer Party - P40

28th/29th August - Music Festival - back page

29th August - Quiz Night - page 40

Every Tuesday - St Matthews Cafe - pages 19 & 43

The Board Room

Renelec House

46, New Park St,

Devizes

SN10 1DS

[sycamorecentre.devizes@yahoo.co.uk](mailto:sycamorecentre.devizes@yahoo.co.uk)

[www.careconfidential.com/devizes](http://www.careconfidential.com/devizes)

The  
**SYCAMORE**  
Centre

07762 382913

A Pregnancy Choices Centre

# LETTERS

## LAURA MAYES, NEW WILTSHIRE COUNCILLOR FOR ROWDE



*Sanca and Otto on Roundway Hill*

Hi Alan,

I write to introduce myself as the newly elected Wiltshire Councillor for Bromham, Rowde and Roundway. I met many wonderful Rowde residents during the campaign and look forward to meeting more of you in the future.

For those who don't know me, I have been the Wiltshire Councillor for Roundway for 12 years. The boundaries changed at the recent election so I have added Bromham and Rowde to my patch. I live in Roundway Village with my husband and our two dogs – Sanca and Otto.

I have been attending Rowde Parish Council meetings for the last 18 months so am aware of the broader local issues and will continue to work with the Parish Council to help where I can.

If you have any specific Council issues where you need my support please contact me at [laura.mayes@wiltshire.gov.uk](mailto:laura.mayes@wiltshire.gov.uk) or 078855819343.

## ARTS SOCIETY UP AND RUNNING

Dear Julie,

I wonder if your village magazine has survived this last year? We have worked hard to keep our society up and running and hope that you might put in the following information if you are still publishing.

**Many thanks, Elizabeth**  
**(see page 23 for more info)**

## OPEN GARDEN

Dear Editor

Wiltshire Air Ambulance and The Wiltshire Bobby Van Trust are the chosen charities once again for Nick and Annette Mason's open garden at their home, Middlewick House, in Corsham.

If you have room in one of your upcoming editions please could you advertise it for us. (Please see page 47)

**Emma Cann**

**01380 840542 / 07795 328928**

**[www.wiltshirebobbyvan.org.uk](http://www.wiltshirebobbyvan.org.uk)**

## CLOTHES SALE

Dear Editor

If you have room in your next issue and we are in time, or online, would you be able to advertise our Bag a Bargain Clothes Sale, in aid of The Wiltshire Bobby Van Trust. Flyer attached.

**Many thanks, Emma Cann**

(Please see page 46)

## KYLO MEETS THE DONKEYS



Morning Alan

Are you still involved with the village magazine?

If you are I thought you might like to see the picture of my grandson's puppy meeting the donkeys at the Rowdey Cow, it was a lovely moment, we use the cafe a lot so it will be nice to get back to normal.

I don't know the name of the lady with the donkeys but my grandson is Oliver and his pup is Kylo (named after a stars wars character). They live in Corsham but come to see me and we normally end up at the Rowdey Cow.

**Sylvia French**

## CAFE OPEN AGAIN FOR BUSINESS!



*'Cheers!'*

The long awaited re-opening of St Matthew's Cafe has been welcomed by village residents.

'Customers' are able to meet inside again and enjoy tea, coffee and a variety of home made cakes, scones and biscuits and of course have a good old chat with friends and newcomers alike. Open every Tuesday morning from 10.45 to 12.00, everyone is welcome, sitting socially distanced and complying with current covid regulations. You can sign in on arrival and use the anti bac gel provided.

*Hope to see some of you there soon for a cuppa and a chat, Ed*

### Magazine Submission

#### Deadlines for 2021

(bi-monthly)

15th July

15th September

15th November

Modern & Traditional

Designed Memorials

## M J SLY

Memorial Stonemason - New Memorials

Additional Inscriptions - Restorations

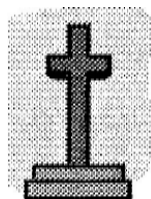
Free Home Visits & Brochure

Tel: Marlborough (01672) 516797

[www.mjsly.co.uk](http://www.mjsly.co.uk)

Email: [info@mjsly.co.uk](mailto:info@mjsly.co.uk)

Workshop & Showroom at  
Pelhams Court, London Road  
Marlborough



## FREE CLASSIFIED ADS

### FOR SALE

Very Large Oblong Gold Bevel Edged  
Mirror (1m 32 x 1m 10) £48

Small Gold Mirror (37cm x 55cm) £10

Contact **Chris Benmasaud**

01380 726394 or 07776 102624

### FOR SALE

8x100 gm. balls of Deramores Studio  
acrylic double knit yarn, shade  
Butterscotch, all the same dye lot  
and in original packaging (shop price  
£2.10 a ball)

£10 01380 721422

### GARDEN TOOL REPAIRS

For all your replacement handles to  
your garden tools contact 01380 721811

### FOR SALE

I have several items in excellent condition:

Pulsar wristwatch in working order

Small Carriage Clock in working order

Beautiful Owl from the Leonardo Collection

Good size porcelain Shire Horse

Large collection of Lilliput Lane cottages

Email or text me for lists, photos or prices

Alan, 07886870053 [watters.alan@gmail.com](mailto:watters.alan@gmail.com)

#### How to advertise here for FREE:

If you live locally and have an item to sell then just contact Julie on [juliebaker72@yahoo.co.uk](mailto:juliebaker72@yahoo.co.uk) or telephone 07796690413, giving a brief description of the item, the amount you would like for it, and a contact telephone number (name optional). 'Wanted' ads also accepted. **Note - private advertisers only**

**Please also let us know whether your item sells or not so that we can either remove it or keep it in for subsequent months**

## PLEASE REMEMBER

to mention where you  
saw the advert when  
you contact any of  
our advertisers!

## Sudoku (medium this month)

						6	3	
			4				1	
				2	1		8	7
	3		1	7	6	8		9
		7				5		
		6			5			3
4			8	3				
1	7	3						
		8	9		4			

### Last Month's Solution

2	4	8	1	5	7	3	9	6
3	5	9	8	6	2	7	4	1
1	6	7	4	3	9	5	2	8
8	9	1	6	7	4	2	3	5
4	2	3	5	8	1	9	6	7
5	7	6	2	9	3	1	8	4
6	1	4	3	2	5	8	7	9
7	3	5	9	4	8	6	1	2
9	8	2	7	1	6	4	5	3

## Mini Sudoku (medium this month)

Insert the numbers 1 to 6 in the blank boxes so that each of the six separate areas of the puzzle and each line vertically and horizontally contains each number only once.

5			6		
		3			4
			1	4	
6					
	1	2			
			2		3

### Last Month's Mini Sudoku Solution

6	2	3	1	4	5
4	5	1	2	3	6
2	1	5	3	6	4
3	6	4	5	1	2
1	4	2	6	5	3
5	3	6	4	2	1

## Quick Reference List of Advertisers

Advertiser	Page
<b>FOOD:</b>	
Local Honey	7
Spotty Dog Farm Shop	39
Farm Fresh Local Produce	35
<b>FUNERAL DIRECTORS ETC:</b>	
Charles S Winchcombe & Son Ltd	7
M J Sly (Memorial Stonemasons)	43
John Stuart Funeral Services	36
D J Bewley Funeral Directors	17
MTM Memorials	5
<b>TECHNICAL/PROFESSIONAL SERVICES:</b>	
The PC Doctor (Ian Diddams)	4
Dolman Audio Visual (TV & Hi Fi repairs)	21
Spanish Tuition	7
Original Pet & People Portraits by local artist	5
The Arts Society North Wiltshire	23
Lendology.cic / Wiltshire Council	38
Rowde Open Studios	2
<b>HOUSE MAINTENANCE:</b>	
House Cleaning (Martina)	36
Painter & Decorator (Lawrence Plumb)	5
Plasterer (T O'Rourke)	21
Adams Renovations	39
Hestia Soft Furnishings	39
Building Contractors (Gaiger Brothers)	17
KFR (used furniture and white goods)	4
Cee Cee Painting & Decorating	4
Gray & Amor Ltd, Property Renovation	11
APT Building and Electrical Contractors	16
<b>GARDEN SERVICES:</b>	
Tree Surgery - Trevor Hale	37
Tree Surgery - Tom Ashpole	23
<b>PUBS/RESTAURANTS/CAFES/B&amp;Bs:</b>	
The Rowdey Cow	41
George & Dragon	40
<b>HEALTH AND FITNESS:</b>	
Clinical Sports & Remedial Massage	21
Active Plus for over 60s	38
The Tranquil Moment Health & Beauty	41
Wiltshire Mind	38
Theo Wildcroft Yoga Classes	36
The Sycamore Centre	41
Pilates Classes	20
North Wessex Therapies	10
<b>PETS &amp; LIVESTOCK:</b>	
Whistley Canine Country Club	41
Dog walking / Pet care services	21
Free Cat Neutering	39
<b>MISCELLANEOUS:</b>	
Wiltshire Bobby Van Trust	17
Nursery - Townsend Barn	10
Canal Boat Rental - Foxhangers	20
Rowde Village Website	36
Car Sales, MOTs & Servicing	38
4Children	21
Arts Together - Ageing Creatively	37
Hair at Home Rowde	37
Logs and Kindling	4
<i>And please remember to mention where you saw the advert when you contact any of our advertisers! Ed</i>	

# Quick Reference Contacts and Village Guide

Listed below in alphabetical order are the various village organisations with contact names and telephone numbers

## Allotments

Chris Stevens, Tel: 01380 738438

## Bell Ringing

Contact Richard Heath  
on 01380722379

## Bingo

Mondays 8 pm in Village Hall

## Charities

Rowdeford Charity Trust  
trustees@rowdefordcharity.org.uk  
www.rowdefordcharity.org.uk

## Children's Art & Craft Classes

Hayley Mitchell 01225458679  
hayleymitchell@thecreationstation.co.uk

## Church Coordinator

Benefice Administrator:  
Sarah Bowler 07876142112

## Church Choir

vacant

## Church Wardens

vacant

## Doctor

For list of doctors contact the  
Health Commission, Pans Lane,  
Devizes, Tel: 0300 111 5717

## Football

John Dalley, Tel: 727094

## Footpaths

Pat Bryant **01380 698567**

## Garage

Slades of Devizes Tel: 727755

## Hospitals

Devizes Community Hospital  
Tel: 723511  
Chippenham Community Hospital  
Tel: 01249 447100  
Trowbridge Community Hospital  
Tel: 01225 711300

## Ladies Club

Held in Village Hall on last Tuesday  
in the month at 8 pm.  
Mrs Di Buckland, Tel: 723049

## Local Councils

Wiltshire Council  
Tel: 0300 4560100  
Devizes Town Council 722160

## Neighbourhood Police Team

Jo Newbury Rural Beat Manager  
PCSO Georgina Dodd  
Ring 101  
Google devizes npt to contact the  
team on  
www.wiltsmessaging.co.uk>devizes

## Parish Council

Chair - **Pat Bryant**  
Tel: **01380 698567**  
Clerk - Mrs Rebekah Jeffries  
Tel: 01380 501919

## PC Repairs - 07833696328

ian@pcdoctor-devizes.co.uk

## Playing Fields

For playing field bookings  
please contact the Parish  
Council Clerk on 01380 501919  
rowdeparishcouncil@gmail.com

## Police

Devizes Police Tel: 101

## Pubs/Restaurants

Cross Keys, Tel: 739567  
George & Dragon, Tel: 723053  
Rowdey Cow Cafe, Tel: 829666

## Rifle Club

Practice Wednesdays, Matches  
Thursdays in Village Hall.  
Laurence Plumb, Tel: 728174

## Roads/Pavements

'My Wiltshire App or 03004560100

## Rowde Court Studios

Ann Swan, Tel: 01380 724788

## Rowde Rainbows

Meet: Tuesdays 6.15 to 7.15pm  
Contact: Emma Moffat 07780756411  
Email: RowdeRainbows@gmail.com

## Rowde Village News

Alan Watters, Tel: 01380 724788 or  
07886870053 watters.alan@gmail.com

## Rowde Village Hall

Enquiries - Tel: 07926952631  
Bookings - 722497 (after 6 pm)

## Rowde C of E Primary Academy

High Street, Rowde SN10 2ND  
Head teacher 723991

## Silverwood School

Head Teacher  
Tel: 850309

## Hft (ex Self Unlimited)

Sharon Young, Tel: 721309

## Sewing Circle

Ring Yvonne on 01380 728745

## St Matthew's Flower Guild

Liz Ibbetson, Tel: 720630  
Flowers for all occasions,  
Weddings, Funerals &  
Anniversaries

## TAXI

R H Reeves 725072  
J Dalley 07592 063789

## Toddler Group

Village Hall Thursdays 9.30-11.30

## Tuesday Afternoon Club (60s+)

Held in Village Hall first Tuesday in  
the month at 2.30 pm.  
Mrs D Ellis, Tel: 722655

## Veterinary Surgeries

Estcourt - Tel: 723687  
McQueens - Tel: 728505  
The Paddock - Tel: 813202

## Village Fete - Lisa Wills

Enquiries - Tel: 01380 730078

## Website

www.rowdevillage.org  
rowdeparishcouncil@gmail.com  
or contact Rebekah 01380 720988

## Youth Club

Iain Marr 07540017184



# Bag a Bargain.



Wellington Barn on Manor Farm,  
Calstone, Calne, SN11 8PY

9th June 2021, 9 am - 7pm (£6 entry)  
Booking tickets essential at  
[www.wiltshirebobbyvan.org.uk/news-events](http://www.wiltshirebobbyvan.org.uk/news-events)

Refreshments available



## Middlewick House Open Garden

[www.middlewickhousepengarden.com](http://www.middlewickhousepengarden.com)

 26-27 June 2021

 Middlewick House, Corsham

 11am - 4.30pm

 Entry - £7

Children under 12 free

The gardens at Middlewick House in Corsham, formerly the home of HRH The Duchess of Cornwall and now home to ambassadors of Wiltshire Air Ambulance, Nick Mason of Pink Floyd and his wife, actress Annette Lynton Mason, are to be opened in aid of The Wiltshire Bobby Van Trust and Wiltshire Air Ambulance.

Visitors will be able to wander around their beautiful gardens, menagerie of animals and stalls from numerous artisans and traders.

Visitors can also expect to see a selection of Nick's classic and high performance cars.

Refreshments will be available with a delicious selection of cakes on offer as well as a barbeque.



# THE FULLTONE

# MUSIC

# FESTIVAL

The orchestral festival that ROCKS!

THEFULLTONE  
ORCHESTRA

With singers from

the  
invitation  
theatre  
company



THE 80'S

August 28th and 29th 2021

THE GREEN | DEVIZES

1pm to 10pm and 1pm to 8pm

TICKETS AVAILABLE ONLINE

[www.ticketsource.co.uk/fulltone](http://www.ticketsource.co.uk/fulltone)

Saturday:

1pm - The Big Classics

3pm - Iconic Themes

6pm - The 80's

8pm - Dance Anthems



DANCE  
CLASSICS

FTO  
*Big Band*

Sunday:

1pm start

2pm - Big Band Launch

6pm - Rock Legends Set

Plus guests throughout the day