

Rowde Village News



April/May 2021

FASHIONWEEK 2020 COVID-19^{edition}



Covid-19 support in Rowde
The group has re-activated for our extremely vulnerable neighbours.

If you are unable to collect prescriptions yourself, or arrange to have them delivered, or need shopping urgently, please contact the support group on

01380 730078 or 01380 698567

or by email at

rpc.lisa.youth@gmail.com or patabryant@live.co.uk

Alternatively, if you are able to help others, we would love to hear from you too.

ORIGINAL PET and PEOPLE PORTRAITS



Colour or mono portrait of a person or pet by local artist Alan Watters. Original portrait. Limited edition prints and/or personalised greetings cards packages also possible. Original supplied in a quality mount ready for framing.

Call or text Alan on 07886870053 or Email watters.alan@gmail.com for more information or text/email a good photo for a quote.

Website: <https://alansfineart.com/>

Editorial

Welcome to this edition of the Rowde Village News.

I hope you are all coping with the latest lockdown due to the pandemic. Remember that the Covid-19 Support Group has been reactivated in the village so, if anyone needs help, please do not hesitate to contact them. You will find their notice on page 2 (opposite).

Despite lockdown however, this is again a very full issue and there are some really interesting articles in the local news section (pages 24 to 31).

Now that children have gone back to school there are updates from both our schools on pages 12 and 13 and there are reports from the Rowdey Cow on pages 6 and 7 and from the Rowde Book Club on page 5.

We also have great submissions from our readers; a beautiful poem (see page 39), a short story centred on the first lockdown last year (see page 8) and another excellent installment from David Brown on page 9 all about bees. All well worth reading.

'Rowde Memories' on page 40 takes us back to the 1950s and how the village looked at that time.

Finally, please do have a look at pages 46 and 47 for all you need to know about the upcoming Parish Council Elections.

Well, hopefully we are beginning to see the light at the end of the tunnel with this awful virus and that we will soon be able to go back to our pubs and clubs and maybe have a snack in the beautiful surroundings of the Rowdey Cow Café. Meantime, mind how you go, keep staying safe and we will see you next time,

Ed

This magazine is brought to you thanks to Jam Print Design & Printing and all the advertisers

Notice to contributors & advertisers

This magazine is generally printed in black and white in hard copy and delivered free to every home in the parish but additionally it is hosted on the **Village website** in full colour. If anyone does not wish any particular details (photographs, names, contact details, etc) to appear on the World Wide Web then they are advised not include them in their submissions, thank you.

Contributors please also note:

The deadline for articles and any changes to advertisements is the 15th of every second month.

Inserts: *Due to the extra work created by inserting leaflets into the magazine and the fact that the team is already stretched, we very much regret we are unable to accept requests of this nature except in very special circumstances, when there will be a small charge.*

Views expressed in this magazine are those of its contributors. They do not necessarily represent the views of the magazine's editorial team.

Contents

April/May 2021

Rowde all about it (page 4) *News and views from village organisations*

Rowde Book Club (page 5)

Rowdey Cow News (pages 6 & 7)

Life in Lockdown (page 8)

The Buzz about Bees (page 9)

Our footpaths need your help (page 11)

Silverwood School (page 12)

Rowde Primary Academy (page 13)

Rowde Parish Council (pages 14 to 16)

The St Matthew's Pages (pages 18 & 19)

inc. Church Rotas and details of Services and Events

Fun Column & Photo Fun (page 22)

Local News (pages 24 to 31)

Letters (pages 38 & 39)

Rowde Memories & Jokes (page 40)

Village Diary (page 41)

FREE Classified Ads (page 43)

Sudoku (page 44)

Quick Reference List of Advertisers (page 44)

Quick Reference Contacts and Village Guide (page 45)

Rowde Parish Council Elections (page 46 & 47)

The Magazine Team

Alan Watters (Editor)

Tel: 01380 724788

Email: watters.alan@gmail.com

Suzan Jackett (Assistant Editor)

Tel: 01380 729791

Email: suzijj@rocketmail.com

Julie Baker (Advertising Manager)

Tel: 07796690413

Email: juliebaker72@yahoo.co.uk

Sue & Richard Scrusse (Distribution Managers)

Tel: 01380 729488

Email: scrusefamily@aol.com

Cover Images

The wonderful photograph on the front cover was sent in by Steph Peskett. Thanks Steph, amazing shot!

And the equally wonderful photograph on the back cover was taken by Geraldine White.

Thanks Geraldine, it's a beauty! *(and can anyone else see a seaplane in the sky or is it just me? Ed)*

ROWDE LADIES CLUB

The Club will start again as soon as possible.

Di. Buckland, Secretary 01380723049

ROWDE TUESDAY AFTERNOON CLUB

The Club will start again as soon as possible.

Daphne Ellis, Secretary/Treasurer 722655

HIWAY CLUB

(for the hearing impaired)

The Club will start again as soon as possible.

Di Buckland (Secretary) 723049

MONDAY CLUB NEWS

Bromham and Rowde Day Centre for Older People

We will be staying in touch with all our members and helpers whilst we are closed with a newsletter, which should arrive on your doormat every week. I look forward to us meeting up again. If any Monday Club members would like any help whilst we are closed, do please let me know.

For more information please contact :

*Caroline Culley, 07557 983940 / 01380 850531
carolineculley1@outlook.com*

ROWDE VILLAGE HALL

It is hoped that the Village Hall will be able to reopen again in July providing the regulations stay the same. Hirers will still be expected to sanitise any equipment, tables and chairs after use and if still compulsory to wear face masks. During the time the Hall has been shut the Committee have discussed and made decisions regarding items needing attention by telephone. The only work carried out has been the cutting down of several rotten ivy covered trees and bushes etc. and the grass mowed regularly. The Committee has been successful in obtaining a Government Grant towards the loss of income during the pandemic.

When the Hall does reopen an A.G.M. will be held but in the meantime we are desperately needing active members to help with the general running of the Hall as without extra help the future of the Hall is uncertain as the Committee numbers have decreased and through health and age other members may have to 'step down'.

Anyone wishing to assist please contact me at Andrew's View, Marsh Lane for further information.

Barrie Barrett, Chairman 722186

LAURENCE PLUMB

Interior & exterior Painting/
Decorating

Free Estimates

Tel: 01380 728174



KFR

refurbishing furniture
reviving communities

Kennet Furniture Refurbiz

The Furniture and White goods charity.

To donate items or purchase please call:

01380 720722 / 720200

Unit 6B, Hopton Industrial Estate,
Devizes, SN10 2EU.

Seasoned Logs and Kindling Available



Don't Shiver, We Deliver

Call James on
07970 781828



PAINTING & DECORATING SERVICES

Your friendly, female decoratress!

All decorating or painting projects considered,
including children's murals

I am tidy, reliable and competitively priced

Call Carolynn on 07881 200218

or email ceeceedecoratress@gmail.com



The P.C. Doctor
(Rowde/Devizes)

07833 69 6328

ian@pcdoctor-devizes.co.uk

ROWDE BOOK CLUB

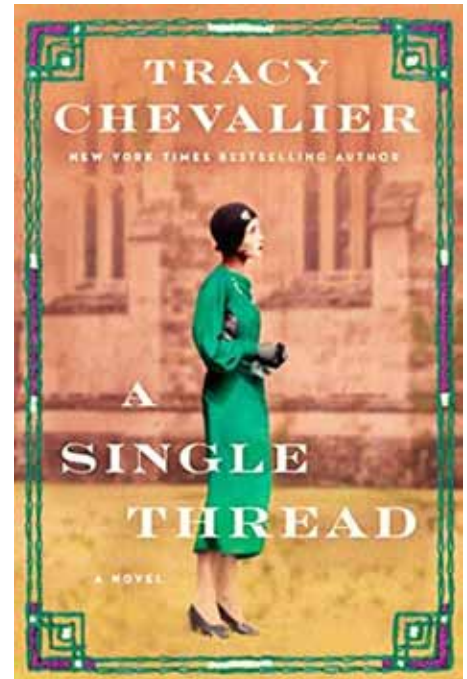
Due to Coronavirus, meetings are continuing via the Zoom facility online, the date of the next 'physical' meeting will be notified to members when it is known. **Contact Ann on 01380 724788 for further info.**

BOOK REVIEWS

A Single Thread **by Tracey Chevalier**

Tracey Chevalier's book *A Single Thread* takes the reader back to a time when the situation for single women was very different to what it is today. Many of the issues, however, are as relevant now as then. This book is touching and beautifully written. It is set in times of change during the thirties, Violet is one of the 'surplus woman' who age 38, moves to Winchester to start a new life and escape the home reminders of the First World War. Despite the societal pressures of the day, she manages to make a life for herself and ultimately makes a very brave decision, which will most certainly give her life meaning.

Anne Ferguson

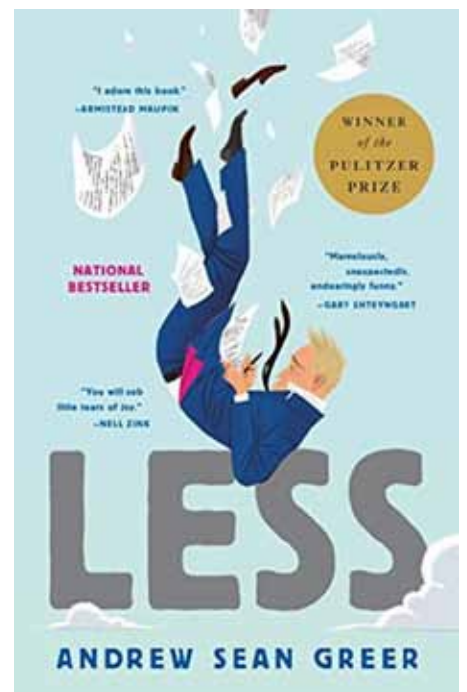


Less **by Andrew Sean Greer**

'Less' is a satirical comedy novel by American author Andrew Sean Greer first published in 2017. It follows writer Arthur Less while he travels the world on a literary tour to numb his loss of the man he loves. It won the 2018 Pulitzer Prize for Fiction.

Most members found this required perseverance to get into or gave up during the attempt and thought it didn't live up to its Pulitzer Prize award. One or two really enjoyed the book, even discovering a few 'laugh out loud' moments. They found the writing style engaging with a nice mix of life reflection along his travels. Another aspect that didn't quite work for some was the late introduction of the narrator becoming part of the story, something about it didn't quite gel.

Ann Swan & Jo Epsom



The book for next month will be 'Girl, Woman, Other' by Bernardine Evaristo

ROWDEY COW NEWS



It finally feels like Spring is in the air! We have started to open up the cafe on weekends for takeaway ice cream, milkshakes, drinks and cakes. We also did takeaway Sunday Roasts for Mothering Sunday and we had such lovely feed back that we are doing the same again for Easter Sunday. From Good Friday we hope to open back up every day ready for the Easter holidays and will have a hot food menu too and then from the 12th April we hope to be able to open up the seating area in our garden again.



It is hard to believe that a year ago Mothering Sunday was one of our last days being open before the first lockdown and this year Mothering Sunday was one of the first days we have reopened after the last lockdown. Hopefully with the vaccination program in full swing we will not have to endure any more lockdowns but who knows in these uncertain times.



Kate, our Front of House Supervisor, and her husband, Ash who is a chef, have started their own lockdown business with their Gourmet Burger Van 'We Meat Again' and we were so impressed that we invited them down to the Rowdey Cow Car Park one



weekend in February and we accompanied them with our Ice Cream Cart. It was a really lovely day which was so well supported and their food was delicious!



Our neighbours the Spotty Dog Farm Shop, who have now been here for a year, have continued to stay open and provide their food delivery service to their customers and they also have a new Milk Station selling delicious Fresh Milk from our neighbouring farmers in All Cannings "Moo to You." We have really missed all our customers while we have been closed and we really look forward to seeing you all again very soon!

Sue x

Easter Sunday Takeaway Sunday Lunch Menu

Roasts Preorder only by emailing info@rowdeycow.co.uk

~last orders Thursday 1st April or before if sold out

Our delicious Rowdey Roasts served hot in takeaway packaging ready for you to collect served with Roast Potatoes, Seasonal Vegetables and Cauliflower Cheese & our delicious Home made Gravy

Roast Chicken £10

Roast Lamb £12

Roast Beef with Yorkshire Pudding £12

Vegetarian Nut Roast £10

Add a Yorkshire pudding for £1.00

Children's portions available for £6.50

Preorder a take away tub of our delicious Rowdey Cow icecream!

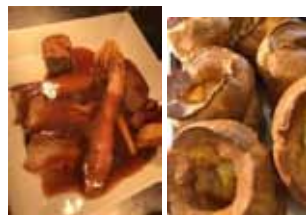
500ml (up to 2 flavours) £6.00

750ml (up to 3 flavours) £7.00

There will be a collection point in the garden at prearranged times between 12pm & 3pm to suit you!

There is a one way collection system in place which allows you to walk around the ponies field if you would like to get some fresh air.

We will also be open Saturday & Sunday 10am-4pm for takeaway drinks & ice cream with an outdoor queueing system



LIFE IN LOCKDOWN (the first one)

Every morning I wake up and it seems like just a normal day, the birds are singing. The swans are playing chase with the geese.

The kettle goes on followed by the TV, GMTV, reality returns when you see Piers Morgan with an image of a grey ball with red tentacles bouncing around the screen behind him, the dreaded coronavirus that has clamped its tentacles around our planet leaving a path of death and destruction, The Silent Killer. Reality kicks in.

The first week in lockdown my hands were like cardboard from over washing, and the latex gloves sucks every bit of moisture out of your hands.

I need Dove Soap, a trip to the supermarket is needed. After queuing for 30 minutes I finally get inside with my sterilized trolley. Living on a boat you only shop small as the galley only has 1 cupboard for food storage and a fridge with a small freezer compartment. Around the first aisle I am confronted by a man in his home made PPE, a deconstructed large water bottle covering his face - I'm thinking "yes I can make one of them". I need rice - no rice, pasta - no pasta, anything that's in a tin - no tins, flour - no flour, no soap no toilet roll. I should have picked up a hand basket! At this moment in time I have 6 bags of flour from 6 lovely people that moor here. I have decided not to shop anymore, that is Vaughan's job.

Life in the Marina consists of 5 social groups:

Group1 - The grass area by berth 1. The Drinking bachelor Music group, they normally venture out of their boats from 12-2, by 3 o'clock the liquid-courage has kicked in and the music begins to flow. Andy will start singing, his voice is pretty good but after 1 too many beers he gets carried away and his voice starts sounding like he straining to do something. Life has not change for them, they are just doing their bit 2 meters apart. Near to this group you have Carol, she is an inspiration. She has suffered some chronic illnesses over the years. Due to her health she has to isolate, this for Carol is very hard as she is normally on the go and never slows down. A couple of weeks ago she asked if she can put some pots out, so I agreed, as gardening is very good for your mental health, we now have our very own Fairy grotto.

Group 2 - The BBQers/Bouncers. They sit on the grass opposite the entrance of the Marina they log who goes out and who comes in, they're my live CCTV. For me a BBQ is for the weekend, not this group, there is no such thing as a school night with this group, when the sun is out so is the BBQ.

Group 3 - Party Pontoon (not any more). This group is a mixed bag of moorers ages ranging from late 20s to late 60s. Since the lockdown they have been very quiet with the younger ones coming out for a chat from 5 o'clock onwards. They come out, they don't sit, they stand about 3 meters apart and chat and chat a load of old you know what, they also have lots of opinions as to where Covid-19 came from, man-made, 5G, Aliens, I think this group has some kind of virus you can catch as they all laugh the same, They rock forward and rock back with their heads up in the air laughing whilst their right hand is rubbing the middle of their torso, and their shoulders jumping up and down, I think Vaughan has caught it.

Group 4- The Cat Corner-This group is a mixed bag of moorers and they all seem to have cats. They love there wind breaker too, they were out the weekend but it wasn't windy, Mike and Helen Carter are moored here they are The Blue Rose Band rhythm and blues they are seen playing in the well deck of their boat and entertaining the marina with their live streaming.

Group 5- Wheeler Dealers/ The Dark Side at the far side of the marina - If you're in need of anything these are the ones who can. They don't waste a thing, they turn scrape into gold, forever being told to keep the picnic table clear but in their eyes this is their work bench and one day they will be millionaires.

During the lockdown the groups haven't changed, they are all doing the same but at a distance. What has changed is how the Marina has pulled together as one. Shopping can be a rather eventful, before you would shop for yourself now you go round asking if anybody else needs anything, this normally is done with your fingers cross behind your back in hope that they're going to say no as you already got five shopping list and credit cards in your back pocket and the week before you got in a pickle as your list got muddled up with the credit cards and Tony didn't want Impulse deodorant for women and Vegan Sausages. He has told me since "the impulse is great".

Since the pandemic there has been a great community spirit not only in the marina but also with the boaters on the canal. We have volunteers from the marina that have joined The Kennet and Avon Boater Society to help the vulnerable living on the canal and in the marina, they shop for those who are isolating, they also have carried 13kg gas bottle to the marina to be replaced, This would have been easier if we had a 20ft cruiser.

With all the boats not moving the canal water has changed colour, we have had green from algae, brown from where I don't know, and very dark almost black. The wildlife sounds louder, this could be the lack of traffic on a normally busy road running along the side of the marina. We have new life, the resident swan nesting on one of the island has got 5 signets, on the other island we had nesting geese, but Sid the swan was very pleased with himself when he destroyed their eggs, the geese spend most of their day annoy the swans, the swans will give chase, the geese are clever they know Sid can't catch them so they teasing him and then fly away, due to the swans heavy body it take to much effort to take off, a bit like the moorers here with their extra lockdown blubber. We have a visiting heron, he likes sitting on the edge of the water waiting to catch food looking very prehistoric. One of the most beautiful birds in the marina is the kingfisher, you can never get your camera out quick enough to catch a picture.

Every Thursday we clap and blow our boat horns for the NHS and the front line workers, you can hear the horns from the canal too, Glyn gets his rather large brass bell out, Lee hold it up for him and Glyn gives it a good wallop, this can go on for a good 5 minutes until they're both mutt and jeff.

We celebrated VE Day, making sure that our moorers stayed at their side of the marina, keeping a safe distance. Outside the office we spread the table out in a circle with the chairs facing in like King Arthur's Round table, music was played, you can't beat a bit of Vera Lynn Well Meet Again.

We are lucky to have a community like this, we may not be able to see our families which for me is hard, My son lives in Bristol about an hour's drive from Devizes, he was a month away from qualifying to be a stone mason having passed his exam with 100%, all he needed was a visit from his college to his workplace, I am a very proud mum, but we can communicate through what's app or Zoom, I walk the Marina daily to check on the moorers, this is now my extended family.

We are probably never more aware of our neighbours than we are right now, with random acts of kindness and the good thing is the earth is healing.

Do we want to go back to normal, is normal good. What is normal? Will there still be random acts of kindness, will we still check on our neighbours? We only live in hope.

Lorraine Howe, Caen Hill Marina Manager

THE BUZZ ABOUT BEES

A swarm of bees in May is worth a load of hay,
A swarm of bees in June is worth a silver spoon,
A swarm of bees in July is worth ... not a fly!

This old rhyme harks back to the days of keeping bees in straw skeps when swarming was not managed as it is in more modern beekeeping methods. A swarm caught in May stood a chance of making a honey crop, a swarm in July would not, and may not survive the winter.



A beekeeper preparing to catch a swarm



A clustered swarm - thousands of bee looking for a new home

Spring has sprung and the bees are increasing in number and activity. The beekeeping season starts in earnest. Checks are done to see if the bees have room for the colony to grow, have enough food, are healthy and aren't making plans to swarm. The beekeeper plans to keep the bees in the hive, working away and making honey. The bees' plans however, are different. The natural method of increase for bees is to swarm. Around half the bees in the colony leave in a cloud with the old queen looking for a new home. Around half the bees stay behind and make a new queen. Where there was one bee colony, now there are two. Behind this simple strategy for increase there is a complex and subtle mechanism.

When the hive is full of bees (possibly 50,000 or more) and the bees are feeling confident, they have honey stored and room is running low then the bees will start to make queen cells. In each queen cell is a bee larva capable of becoming a queen. These larvae are fed exclusively on royal jelly. They grow quickly and in just over a week the queen cell is sealed and the larva begins to transform into a queen bee.

If the beekeeper has been lax or unobservant, the bees plan rebellion. The worker bees starve the old queen and chase her around the hive in order to lose weight and get fitter as in a few days she needs to be able to fly again. On a warm afternoon, some of the bees instigate the revolt. They rush around in the hive and get all the bees excited, the bees gorge on honey (having no other possessions to take with them) and then suddenly in less than a minute around half the bees in the hive pour out and take to the wing, pushing the old queen out with them in a cloud of bees.

Whilst alarming, a swarm of bees is usually harmless, intent entirely on finding a new home and the bees, being full of honey are in no mood for aggression. They usually settle in a cluster within a hundred yards of the home hive and then will spend a few hours or even a couple of days before deciding on a new home. When it is agreed (and it is a democratic process) the bees set off again and set up in their new home.

Back at the hive the new queens are emerging from their cells. Normally the first one out will sting and kill all the other queens still in their cells or possibly engage in a fight to the death to see who is the new monarch. After her nuptial flight, the new queen will take up her duties which consists solely of laying eggs and if all has gone well there will now be two bee colonies, one headed by the old queen in a new home and one headed by a new queen in the old home.



Three Queen cells - each containing a new queen bee - compare these with the ordinary cells of worker bees in the lower left of the picture

If you are lucky(?) enough to see a swarm, let me know and if feasible I will collect and rehome the bees.

David Brown, Rowde Hall Cottage
01380 722406 davidb.rowde@gmail.com



Heather Smith
North Wessex Therapies

Change and Wellbeing Therapy

cognitive behavioural therapy - hynotherapy - relaxation -
mindfulness - stress management

Face to face appointments now available at The Therapy Rooms, 32
New Rd, Chippenham and in Bromham

anxiety - stress - phobias - chronic pain - habits - poor sleep
life goals: career - personal life - sports

Call for a chat or email

t: 07702 113544

e: heather@northwessextherapies.com

w: www.northwessextherapies.com



TOWNSEND BARN NURSERY POULSHOT



For pre-school children age 0-5 years
Open all year from 8am - 6pm

The Nursery makes full use of its rural setting, and focuses on outdoor play as well as indoor activities. Home cooked food provided.

Children's gardens & greenhouse | Vegetable plot
Tennis court | Nature garden | Outdoor wood oven
Swimming with Parents | Sandpit | Outings & Trips

For further details please contact:
01380 828141 / 07976 899946

www.townsendbarnnursery.co.uk

OUR FOOTPATHS
Need YOUR HELP....



You may have noticed that some of our footpaths in the village need some care and attention.

They are being used more and more now since the pandemic began.

It would be great if we could make all our paths useable and safe for everyone to enjoy.

We are looking to form a group of ready volunteers who have outdoor skills and the desire to help our community in a very practical way.

We have bridges to fix, stiles to re-instate, steps to add and hedges to cut back.

If any of the above appeals to you, please contact the Parish Clerk in the first instance.

at rowdeparishcouncil@gmail.com, tel: 01380 501919

Thank you to the Wiltshire and Swindon Ramblers for the photograph and support, advice and encouragement.

GRAY & AMOR LTD.

CARPENTRY & PROPERTY RENOVATION

**Covering all aspects of property
renovation and maintenance**

**View our range of services online
or call to discuss your project**

www.grayandamor.co.uk

CALL (01380) 587006

NEWS FROM SILVERWOOD SCHOOL - ROWDE CAMPUS

Co-operation Responsibility Integrity Resilience Respect Kindness

With lockdown after Christmas there has still been lots of activities for students to take part in; whether at home learning or in school. Life Skills day was enjoyed by all, students were baking, cleaning, gardening and showing what they are able to do.



To mark World Book Day we had an online Theatre show which students at home could connect to as well as those who were in school.



We've had an online Disco with Disco Dion who was the DJ – over 60 families joined and it was a great success.



Students are all back enjoying being in school with their friends, learning, exploring the grounds and seeing the animals.

Teresa Ollerhead



NEWS FROM ROWDE PRIMARY ACADEMY

Our bright start leads to their bright future

How lovely it is to have all the children back in school. As we continue to blend together into our daily routines I can't help but feel a sense of pride especially for the youngest children about how resilient and positive they are. Their laughter and approach to learning and play is infectious as is their acceptance of handwashing and sanitizing. The children are certainly teaching me about optimism and hope for our future. Optimism was our first school value for Collective Worship on our return to school and it was exceptionally difficult deciding who would be the value stars.

I remember writing an article for the Rowde Village News a year ago, having just spent an enjoyable time with my reception children and the Year 1 working together on their Easter Gardens. We never saw these gardens flourish as we went into the first lockdown. This week we have made our Easter Gardens to remind us of the special time ahead in the build up to Easter. In doing so we are thinking about how Easter will hold a special place in our hearts as we get to meet friends and family again after what has seemed like an extremely long winter.



We are about to start our gardening quest through the school grounds and our first goal is to restore our Spiritual Garden into the tranquil and beautiful space that it was before Lockdown. Our vision is that eventually it will become a place where children can go at various times of the day for reflection and peace as well as being able to share story times in there. Ultimately in the not too distant future we hope to be able to welcome back Reverend Ruth to lead some outdoor worship in a safe environment. We have missed her and the Open the Book team who help us bring Bible Stories to life.

If there are any keen gardeners who have overplanted small shrubs and flowers and would like to donate any spare, we would really appreciate the kind offer. We are growing sunflowers ready to plant out when it is time as these will really symbolize that summer is here.



We hope to see you in the Village one day soon,

Mrs Bq and Birch Class

You can now follow us on twitter at Rowde C of E Primary@RowdeSchool or on Facebook

Your Parish Council

Please visit the rowdevillage.org website; the Rowde Parish Council Facebook page and the village noticeboards for confirmation of forthcoming Parish Council meetings.

Parish Council meetings will be held on zoom for the foreseeable future. Please contact the Parish Clerk for a zoom code in advance of the meeting if you would like to attend.

A full set of minutes is available on the village website. If you would like to receive a hard copy of the minutes, please contact the Parish Clerk.

Parish Council Meetings – during Coronavirus

Since the last edition of the Rowde, Village News, the Parish Council has met on 10th February & 10th March 2021 on zoom.

Parish Council Membership

Farewell...

The Parish Council has said farewell with great sadness to I Whittaker-Axon and J Hawkins. Both Councillors, and former Chairs, were thanked greatly for their contributions to the Parish Council and to the village of Rowde.

New Chair...

Mrs Pat Bryant has been elected as Chair of Rowde Parish Council.

Elections...

Parish Council and County Council elections will be held on Thursday 6th May 2021. This is your opportunity to join Rowde Parish Council and to become a part of the team that shapes your village, with regards to housing development, leisure facilities, footpaths, allotment provision and so much more.

All you will need is:

- a nomination pack
- the names of two local residents to nominate you
- and enthusiasm for your village.

For more details on how to apply, please see page 46.

All nominations need to be delivered in person to Wiltshire Council, Monkton Park, Chippenham before Thursday 8th April 2021 by 4pm.

ACT NOW! These elections only come along once every four years!!

Other news in Rowde...

Neighbourliness & Community Events

- Rowde is entering the Best Kept Village Competition again!!
- We all love where we live: let's show the judges. Anything that you can do to tidy/tame/love the area around your house, will help. Since the start of the pandemic everyone has spent more time at home. If you can improve the village's appearance in any small way, it will benefit everyone.

Parking

- Please can we remind everyone to park with respect for your neighbours and residents who live in the village. Everyone should be able to easily access their own drives or houses. Likewise, no one person owns the

highway or has the right to tell others where to park. Please be kind.

- Please be aware of any hedgerow/bushes/trees that may hang over your property and cause obstructions and dangers for pedestrians and drivers.
- There is no such thing as the 'dog poo fairy'. Please keep our streets and grassed areas clean for everyone to enjoy. Please do not use our playing fields, to exercise your dogs.

Rowde Covid support group

- The Rowde Covid support group is available to help residents in need during the lockdown. If you are unable to obtain prescriptions yourself and can not have them delivered or collected by family members, the group can help you.
- The volunteers can also collect basic shopping needs. This is a small group with a big heart. We are here to help if you need us.
- The group is managed by L Wills & P Bryant, with very many thanks from the parish. If you need help or can give help, please contact on Lisa Wills on 01380 730078, or by email at rpc.lisa.youth@gmail.com, or Pat Bryant on 01380 698567 or by email at: patabryant@live.co.uk

Silverlands Play Area - refurbishment

- There is money available at Wiltshire Council to upgrade the play facilities at Silverlands. The Parish Council gives a huge thanks to Cllr Mayes for her help and support with this.
- The Parish Council is looking for views from the local community, families and young people to gauge their views on what they would like to see in this area. If you have any suggestions, please contact Cllr Lisa Wills, 01380 730078, or by email at rpc.lisa.youth@gmail.com.

Allotments

Oak tree

- Further options from Wiltshire Council on remedial work to the oak tree have been considered. Subsequently, the Parish Council will not pollard the oak tree at this point.
- The Parish Council has made an application to carry out the following work under the Tree Preservation Order: TPO Ref E373: The findings of the PICUS report have shown the extent of decay within the main stem of the tree. The tree is now deemed as unsafe in its present form; a limb has been lost in the past. The application is to remove the central limb to just below the tear wound of recent limb loss and reduce remaining main large limbs by 6-8m to reduce end weight and help to prevent failure in the future.
- The oak tree will need annual monitoring after this work has been carried out.

Footpaths & Highways Safety

- Are you interested in forming a group to look at and repair some of the footpaths around the village? It has been noted that our footpaths are being used much more since the start of the pandemic and there are minor issues that

need to be attended to. If you are interested and able to help, please contact the Clerk.

- There have been two road traffic accidents on the corner of Close Lane with the High Street, Rowde. Wiltshire Council has confirmed that it will replace the damaged chevron as a priority. The streetlights on this corner have recently been replaced too.

Neighbourhood Planning

- Rowde Parish Council is represented on the Devizes Area Neighbourhood Planning Group. The parish has been asked to identify possible parcels of land for development. If you have land or know of land that could be developed, please contact the Clerk, or Cllr Pat Bryant. 01380 698567 or by email at: Rpcpatbryant@outlook.com

Wiltshire Council update

Silverwood School (formerly Rowdeford School)

- There has been a further community webinar to share the architects designs for the new expansion at Rowdeford School.
- Local questions centred around the ecology of the site and road safety concerns. The planners will consider applying for a Traffic Regulation Order (TRO) to amend the speed limit around the school after the planning application has been approved. It is not possible to incorporate the TRO in the planning application.

Coronavirus

- Covid-19 infection rates in Wiltshire are decreased (as of 10/3/21). Only 2% of people taking Covid-19 tests in Wiltshire are currently found to be positive.
- Infection rates will be monitored now that the schools have returned.

Hft

- Wiltshire Council has been informed by Hft that they are serving notice on all of the placements at Furlong Close. The other funding authorities involved have also been notified. The notice period end on 19th May 2021.
- There are two options available at this time:
 1. Hft continues to provide a service on a contractual relationship with Wiltshire Council or
 2. Hft has offered to lease Furlong Close for up to 2 years. Wiltshire Council would then need to commission a new provider to run the service.
- Talks with residents and families are ongoing.

Finance Update

Monthly invoices for January & February 2021 were as follows:

January invoices (total: £1,807.96)

- Admin costs: £1,236.92
- Grounds maintenance: £571.04

February invoices (total: £2,470.16)

- Admin costs: £1,402.36
- Allotments: £297.28
- Grounds maintenance: £629.52
- Website: £141.00

Parish Council income for January & February 2021

11/01/2021	Interest	£0.06
31/01/2021	Interest	£0.34
12/01/2021	CIL payment (Malthouse Farm) Wiltshire Council	£116.09
09/02/2021	Interest	£0.06
28/02/2021	Interest	£0.36

My Wiltshire App

- Please note that Wiltshire Council is updating its website. Changes have been made to the 'My Wiltshire App'. If you have an existing account, please click on 'forgotten password' when you try to login for a new password link to access your account.
- Please forward requests for highway repairs to the Clerk or report them through the 'My Wiltshire App'. The more reports that are logged through the App, the higher the priority will be given to the issue.
- It is easy to report problems like potholes, dog mess, graffiti, litter and street lighting in your area using the 'My Wiltshire' online form. Reports can be made anonymously, or you can register for free. Once you have registered, you can track the reports you have made, and receive notification once the work has been completed. The more residents report issues, the more likely we are to have them fixed.
- The 'My Wiltshire' page can be accessed through the Wiltshire Council website at: <https://www.wiltshire.gov.uk/mywilts-online-reporting>

Concerns

If you have any local concerns about footpaths, hedges, allotments, play facilities, or anything village related, we would like to hear from you. We value your input and suggestions and will try to help.

You can contact us through the Rowde Parish Council Facebook page, or by e-mail: rowdeparishcouncil@gmail.com, or by telephone: 01380 501919.

Police Matters

If you need to report a crime:

Please dial 101 to report a crime and 999 in an emergency.

It is possible to follow the Police on:

Twitter <https://twitter.com/wiltshirepolice>

Facebook <https://www.facebook.com/wiltshirepolice/>

Or sign up to Community Messaging <https://www.wiltsmessaging.co.uk/>

Dates for the diary

Parish Council meetings dates can be found in the village diary at the back of the magazine. We invite all villagers to attend, to observe and to make use of the public question time at the Parish Council meetings.

A full set of minutes is available on the Parish notice boards and on the village website.

ROWDE PARISH COUNCIL

Pat Bryant	Chair	patabryant@live.co.uk	01380 698567
Lisa Wills	Vice-Chair; Children's Liaison; Social Media	rpc.lisa.youth@gmail.com	01380 730078
John Dalley	Sports & Playing Fields	jdtaxisdevizes@gmail.com	07592 063789
Debra Pullen		rpc.dpullen@gmail.com	
Dave Revell	Allotments	rpc daverevell@gmail.com	07734 422703
Chris Stevens	Ground Maintenance Officer	rpc.cstevens010@gmail.com	01380 738438
VACANCY			
VACANCY			
VACANCY			
VACANCY			
VACANCY			
Rebekah Jeffries	Clerk	rowdeparishcouncil@gmail.com	01380 501919

Wiltshire County Councillor deputising for Rowde

Anna Cuthbert	Wiltshire Councillor	Anna.cuthbert@wiltshire.gov.uk	
---------------	----------------------	--------------------------------	--

WILTSHIRE COUNCIL - Useful phone numbers

Libraries:	01225 713000	or mobile/outside Wiltshire:	01225 777234
Parking:	01380 734812	School admissions:	01225 713010
Pest control:	01380 734721	School special educational needs:	01225 718095
Planning:	01380 734812	School transport:	01225 713004
Recycling boxes - Hills Waste:	0845 6032085	Social care – adults:	0300 456 0111
Registration - Births, Deaths & Marriages:	01225 713007	Social care – children:	01225 773500
Roads & pavements (Clarence) Freephone:	0800 232323	Street care and cleaning:	01380 734849



APT GROUP SERVICES

01380 711781

www.aptogroupservicesltd.co.uk

Approved Building and Electrical Contractors based in Wiltshire

Building Services

Approved CV Charger Point Installer

Electrical Services

Lighting Design

Smart Home Technology

Home Improvement

Fire Alarm and Emergency Lighting



TRUSTMARK
Government Endorsed Quality

GAIGER BROTHERS LTD

Building Contractors

6 Northgate Street, Devizes, Wiltshire SN10 1JL

Tel: (01380) 722412

Fax: (01380) 727890

The Wiltshire Bobby Van Trust



Registered Charity No 1153790

The Wiltshire Bobby Van Trust provide a Courtesy Home Security Service for elderly, vulnerable and disadvantaged people living in Wiltshire, who have become, or are at risk of becoming victims of house crime or domestic abuse.

Our operators will carry out a full security and fire risk assessment before fitting the appropriate security devices. If you are over 60 or vulnerable due to a mental or physical disability and don't feel that you have adequate home security please contact us to arrange a visit.

Tel No: 01380 861155 Email: bobbyvan@wiltshire.police.uk
www.wiltshirebobbyvan.org.uk



BEWLEY

Funeral Directors Limited

Our family are here for your family

Devizes local family funeral service EST. 1970

Three generations of experience, personal values and professional service

24 Hour Service | Home Visits | Simple or Bespoke Funerals | Pre-paid funeral plans | memorials

Devizes 01380 728008

Office & Chapel: 64 New Park Street, Devizes, SN10 1DP
Over 100 reviews at www.bewleyfunerals.com



April/May Worship in Rowde, Bromham and Sandy Lane

All of our services are online at the moment, although we are also open in a limited way for Weddings, Funerals and Baptisms.

Everyone is very welcome at all our services



Date/Time	Service
Sunday 4 April 8.00 am 10.00 am 11.15 am	Easter Sunday <i>Holy Communion (BCP), Sandy Lane</i> Holy Communion, Rowde Informal Worship on Zoom
Sunday 11 April 8.00 am 10.00 am	<i>Holy Communion (BCP), Sandy Lane</i> Holy Communion, Rowde
Sunday 18 April 8.00 am 10.00 am 11.00 am	<i>Holy Communion, Bromham</i> Holy Communion, Rowde Annual Parochial Church Meeting, Rowde
Sunday 25 April 8.00 am 10.00 am 11.15 am	<i>Holy Communion (BCP), Sandy Lane</i> <i>Holy Communion, Bromham</i> Informal Worship on Zoom
	<i>For services in May, please check the church notice boards</i>

Please visit our website, for the latest information on our services: <https://www.achurchnearyou.com/church/9690/>

or check the Church notice board for further information

Or contact the Administrator:

Sarah Bowler

sarahbromhamandrowde@gmail.com

07876142112

Everyone is very welcome at all our services

Private Prayer

The churches within our Benefice are also open for private prayer on the following days.

Mondays St Matthew's Rowde 2pm - 4pm

Tuesdays St Nicholas Bromham 10am - 4pm

Thursdays St Matthew's Rowde 2pm - 4pm

Fridays St Nicholas Bromham 10am - 4pm

Every day Sandy Lane 10am - 4pm

FaceBook – There is a Thought for the Day on Monday, Wednesday, Friday and Saturday, written by Revd Heather Smith, Caroline Culley, Fran Hall or Revd Ruth. In order to see this, search for "Churches of

Rowde and Bromham" on Facebook, or click on this link: <https://www.facebook.com/groups/439328832796693/>

Occasional videos of Bible reading and prayers – You Tube Recorded Services

Churches of Rowde and Bromham

[https://www.youtube.com/channel/](https://www.youtube.com/channel/UCEaEU1Oqi6iDABPgyyc1LQQ)

UCEaEU1Oqi6iDABPgyyc1LQQ

Open the Book

For more information, contact Fran Hall:

07989758412 or Sarah Bowler: 07876142112

sarahbromhamandrowde@gmail.com

Growing in Faith

Please contact Ruth Bray on 01380 859847 or ruthbray@outlook.com

Mothers' Union

Please contact Carole Myer for details: 01380 850706 or ed.myer@btinternet.com

Church Cleaning

For more information contact Jane Moss on 01380 729160 jmosscaudet@gmail.com
 Maureen Hiscocks 01380 725406 for the brass cleaning rota.

Choir

Choir Leader: Vacant

Choir Practise Junior and Adults will return as soon as possible.

Bell Ringing

Contact: Richard Heath rich.p.heath@gmail.com/ or 01380 722379

St Matthews Café

St Matthew's Café, will be held on Tuesdays from 10.30 am on Zoom until further notice, but please do check a Church Near You and Facebook for up to date information.

Contact Caroline carolineculley1@outlook.com or Revd Ruth for more details.

The details for zoom are available on A Church Near You: <https://www.achurchnearyou.com/church/9690/>

Flower Arranging

For further information please contact: Jane Sartin j.ksartin@talktalk.net or call 01380 727446

Contact Details

Rector:

Revd Ruth Schofield:

07738 858909

01380 850191

revrschofield@gmail.com

Associate Priest:

Heather Smith

07795 822515

Lay Minister:

Caroline Culley

07557 983940

Church Wardens:

vacant

Benefice Administrator:

Sarah Bowler 07876 142112

sarahbromhamandrowde@gmail.com

Website: A Church Near You

<https://www.achurchnearyou.com/church/9690/>

Benefice Facebook page: Churches of Rowde and Bromham

<https://www.facebook.com/groups/439328832796693/>

A Message from Revd Ruth

Dear Friends,

A few years ago when we lived near Portsmouth, I used to crew for my husband on our little sailing boat. On one of our adventures in the Solent, we decided to try sailing home after dark, using the electronic charts and the lights on the navigation buoys to guide us. It was quite a disorientating experience! During

the day, you can see the shore, with all of its features, the skyline, and know exactly where you are by watching the landmarks. But at night it feels very different – no reassurance from checking the view. Fortunately, the skipper's skills got us home safely.

These months have been equally disorientating for many of us. Features of our year such as birthdays and anniversaries have passed in a blur – without the usual celebrations with family or friends. Almost every aspect of our lives has been thrown upside down – a bit like trying to sail at night when you can't easily see where you are.

As we move out of lockdown, cautiously but steadily, some of the features of normal life will re-emerge. We know that life won't be quite as it was, and possibly we'll remain disorientated for a while. But this season gives us a chance to rethink how we go forward.

The church building has always offered a safe, quiet and peaceful place for us all to pray in, or just sit and think. It's still open on Mondays and Thursdays for prayer. But the church isn't just the building, it's the people who make up the church community. We're keen to listen to what this village needs. Are there other ways in which we can help the village to recover from the pandemic? We've been thinking about how we might mark the losses, or celebrate all that has been good, over the last 12 months. If you have ideas on this, or on other support you might like, please do get in touch.

In his love, Revd Ruth

The Marie Curie Urgent Appeal

Right now, more people need us than ever before. Our nurses, hospices and Support Line have been here through it all, day and night, caring for dying people with and without coronavirus. We urgently need your donations to help continue our vital work.

To donate go to:

<https://mariecurie.org.uk/donate/>



If you're living with a terminal illness or caring for someone, we're here with practical and clinical information, and emotional support.

We're here for family and friends too – no one is turned away, so please don't hesitate to call if you need us.

All the support we offer is free and open 8am-6pm Monday to Friday and 11am-5pm on Saturdays. **Helpline 0800 090 2309**

Cloud Nine Therapies

Based in Bromham with a lovely treatment room on New Road

Offers you a way to relax the mind and body

Reiki (pronounced ray - key) is a non-invasive therapy carried out whilst you lay fully clothes on a couch

Ear Candles are a great way to help relieve ear issues along with sinus problems and is a lovely relaxing therapy

Hand Reflexology a lovely relaxing therapy covering hands up to elbows (does exactly the same as feet, just done on your hands)

Other treatments available

Contact Trudi on 07810 – 374053

Trudis36@gmail.com

www.cloudninetherapies.co.uk

find me on Facebook, twitter or Instagram

(Trudi Speirs and Cloud Nine Therapies)

WE NEED YOU!

Do you have some news to share or just have something to say about the village?

If you can contribute to the content of your Rowde Village News in any way or would like to give us feedback (good or bad) or discuss any magazine issues then please contact:

Alan Watters on 01380 724788 or by email at watters.alan@gmail.com

or **Suzan Jackett** on 01380 729791 or by email at suzijj@rocketmail.com

DISCLAIMER

Please note that the information given and views expressed in this magazine are generally as supplied by the contributors. Our personal comments may sometimes be expressed in the editorial on page 3 and if our views are given elsewhere, they will be credited as so. In addition, much of the local news items is sourced directly from other publications and the internet. We therefore apologise for any inaccuracies published but regrettably we have no control over this possibility happening. We will however publish any corrections notified to us as soon as possible.

Alan Watters, Editor

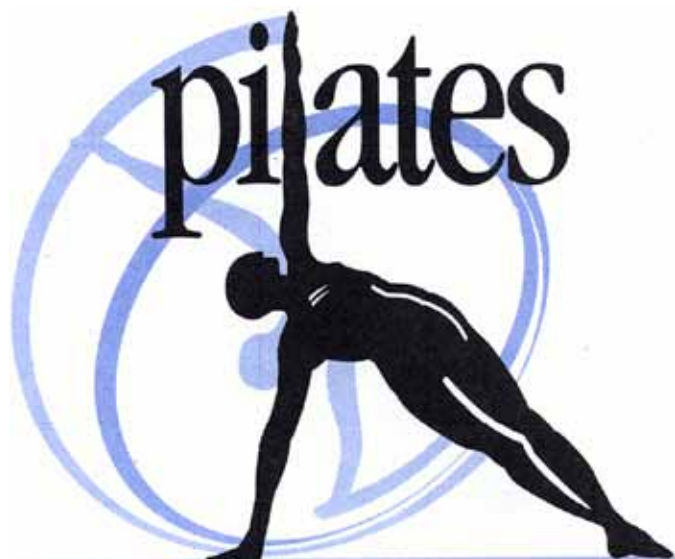
Move.Every.Day.

Day time and Evening Classes for Beginners and Intermediates

Re-starting when we reach stage 3 of the road map - at the earliest on 18th May

Looking forward to seeing you again very soon!

at Rowdefield Farm, Conscience Lane & Charlotte School of Dance, Bath Road



for further information
please visit my fb page
move every day pilates
&

follow me on instagram
med.pilates

for any enquiries please email
suzijj@rocketmail.com or call
Suzan on 01380 729791

SKIP HIRE

4yd / 6yd / 8yd Skips

Green waste / Hardcore
/ Soil / Timber / House &
Garage clearance

Scrap metal skip
available

Phone for all
requirements

07547 683368



**PLEASE
REMEMBER**
to mention where
you saw the
advert when you
contact any of
our advertisers!

Dolman Audio Visual

Berhills Lane Farm, Sells Green, Seend

provides

**reliable and effective repairs
& maintenance to all makes of
TV, Hi-Fi & video equipment**

by knowledgeable and friendly technical staff
at our well-equipped service department

Please contact

Maggie or Peter

Phone/Fax: 01380 828524

Email: peterdolman@btconnect.com

DOG WALKER / PET CARE SERVICES

Does your dog spend too much time home alone? Do you find it hard to fit in regular daily exercise for your dog amongst the stresses of everyday life? Let me help you! I'm a dog walker with over 10 years' experience working with dogs and other animals. I have worked for guide dogs and have been a supervisor at a busy kennels, as well as years helping at veterinary practises. My passion for animals runs very deep and their care and welfare is of up most importance to me. I am experienced, offering a professional, caring and friendly service to dogs & their owners of all Breeds I am fully insured and first aid trained.

I have a Facebook page where you can see reviews and updates of your dogs on their walks.
www.facebook.com/boopeeandfriends/

My website is www.boopee-and-friends.co.uk. Feel free to message me via website or on my Facebook page. Alternatively you can call me on 07368635866.

T O'ROURKE

All plastering work undertaken

No job too small

FREE ESTIMATES



Contact Troy on:

01380 698993

or 07968 634689

Coronavirus (COVID-19) Travel Alert
Travel restrictions may apply and
transportation services are subject to change.
Please check online or phone 01249 444444
before you travel.

FUN COLUMN

Welcome to this month's fun column, featuring classic quotes by Whoopi Goldberg:

Normal is nothing more than a cycle on a washing machine.

Why does a woman work ten years to change a man's habits and then complain that he's not the man she married?

If at first you don't succeed, skydiving is not for you.

We're here for a reason. I believe a bit of the reason is to throw little torches out to lead people through the dark.

After I was born people stopped referring to sex as making whoopi!

I farted on the air during a taping of 'The View,' but no one seemed to notice. They just assumed I was talking.

I always wished I had married Ben Cushion.

What do you call a cow with no legs? Ground beef.

What do I know about bonsai trees? Very little.

It's being willing to walk away that gives you strength and power - if you're willing to accept the consequences of doing what you want to do.

I don't look like Halle Berry. But chances are she's going to end up looking like me.

When asked why I came to Gamblers Anonymous I told them I lost a bet.

I've got my first Gamblers Anonymous meeting tomorrow. I rang them today to check the time. It's ten to one.

Someone anonymously keeps sending me bunches of deheaded flowers. I think I'm being stalked.

Do you have a funny story to tell? Send it in!



PHOTO FUN

This issue we have some amusing animal photos.



Do you have any interesting or amusing photos of people, pets or anything else? Send them in!

The Arts Society North Wiltshire

April 1st:
August
& 19th Cent
Barry

NOW ZOOMING

May 6th:
pestry:
imate Wall Decoration
Susan Kay-Williams

We are a friendly group who enjoy hearing about a wide range of arts based subjects. Many people from this area and beyond appreciate them – do come and join us! We meet in the Assembly Hall, Melksham from 10am for coffee and at 11am for a one hour lecture.

For more information go to tasnorthwilts.org.uk

Tom Ashpole TREE SURGERY All Aspects of Tree Surgery Covered



Including Hedgework And Stumpgrinding
NPTC certified, Cert.Arb (RFS) Fully Insured

Tel 01380 699473 Mob 07929 898544

Email: enquiries@wiltshiretreecare.co.uk

Web: www.wiltshiretreecare.co.uk

SPANISH TUITION

Native language tutor offering Spanish lessons and Translation

- * **GCSEs and A levels:** experience on preparing students for various exams: AQA, Edexcel, Common Entrance & International Baccalaureate.
- * **Adult tuition** to all levels: beginners, intermediate & advance.
- * **References** available if required.
- * **Contact** Patricia Córdoba on:
pcordoba@hiberniatype.com
mobile no.: 0788 496 20 79

LOCAL HONEY FOR SALE

Rowde Hall Cottage
High Street, Rowde SN10 2PL
(Opposite Cross Keys)
01380 722406
davidb.rowde@gmail.com
£5 for a 12oz jar (340g)



Local News



NEW PATRON FOR SUPPORT SERVICE

HM Lord-Lieutenant of Wiltshire becomes a Patron of Swindon Domestic Abuse Support Service

Mrs Sarah Rose Troughton, HM Lord-Lieutenant of Wiltshire, is giving her support to Swindon and Wiltshire's domestic abuse charity by becoming a Patron.

Mrs Troughton, who is the official representative of Her Majesty the Queen, has been Lord Lieutenant of Wiltshire since February 2012 and was the first woman in the county to hold the position since its creation in the 16th Century.

Mrs Troughton said: "I've been aware of the terrific work of Swindon Domestic Abuse Support Service for many years and I am delighted and honoured to become a Patron.

"During the pandemic domestic abuse support services have been needed more than ever. I'm especially keen to lend my support in raising awareness and helping male as well as female victims of domestic abuse, and this is an area in which I know SDASS are working hard."

Nicky Alberry, Chair of the board of Trustees of SDASS said: "We are all so pleased that Sarah Troughton has agreed to become one of our Patrons. She has always taken a keen interest in our work and her passion and determination will be a great help for us going forward.

"Her appointment is reflective of the work we are now doing across Wiltshire in supporting all victims of domestic abuse, and we look forward to working with her in what will be a very busy time as COVID restrictions are lifted."

The appointment of Mrs Troughton follows on from the recent appointment of Dame Esther Rantzen OBE as a Patron earlier this year.



Further information

Swindon Domestic Abuse Support Service is free and confidential, serving Swindon and the surrounding area. Our service operates 24 hours a day, 365 days a year, supporting both female and male victims of domestic violence, those in lesbian, gay, heterosexual relationships, those who are in fear of being forced into marriage and those who fall victim to honour-based violence. We also work with young people aged 16-25 years who may be experiencing domestic violence or abuse as part of an intimate relationship.

SDASS operates a refuge which has been purpose-built and specially designed, with 22 individual flats it can accommodate lone females or families with children up to 18 years old and has a dedicated team of trained staff. In the community SWA has a network of Independent Domestic Violence Advisors (IDVA) who work with victims, within the Great Western Hospital, Doctor Surgeries and Health Centres across the town.

Our dedicated helpline – 01793 610610 – is available 24 hours a day, 365 days a year covering Swindon and extends to the county of Wiltshire every day 5pm to 9am, every weekend and bank holiday.

I SAVED A BEE TODAY!

I had a short break from producing the Rowde Village News to have lunch the other day and as it was a rare sunny day, I sat out in the garden. Whilst there I noticed a bee just sitting motionless on the path beside me.

Now it's all well and good when the bees are buzzing around, doing their thing but this bee looked like it was literally on it's last legs and was dying. Many years ago when I've seen bees like this I always assumed that they were coming to the end of their natural lifespan but, ever the optimist, I did some research and found out that they may just be tired and you can actually revive these bees quickly and easily using only sugar and water, This is what I did with this one and happily it quickly regained its strength and was able to fly off (see the photo I took of it opposite).



'My' bee readily consuming some sugary water

What You Can Do

It's true, a simple solution of sugar and water helps revive exhausted bees.

To create this energy drink for bees to revive tired bees, The RSPB suggests mixing two tablespoons of white, granulated sugar with one tablespoon of water. Then place the sugar/water mix on a plate or spoon. Do not add any more water otherwise, the bee could drown.

Next place the bee on the plate or spoon, where it will have a little drink, hopefully helping it to gather the energy it needs to fly back to its hive.

Some Do's & Don'ts

Don't be tempted to offer tired bees honey. In most cases, the honey isn't suitable as a lot of honey is imported and may not always be right for native British bees. And only ever offer white granulated sugar – never offer demerara, or any artificial or diet sweeteners.

Don't leave any sugar water sitting out in your garden. This can prevent the bees from gathering precious pollen and could be detrimental to their health.

Alan Watters (Ed)

Further info: <https://moralfibres.co.uk/how-to-revive-tired-bees>

FREE MASSAGE FOR KEY WORKER!

I had a brush with COVID-19 at the beginning of this year and I wanted to do something that would say thank you to all of those who helped me make a full recovery from the paramedics to the cleaners and everyone else in between.

But I realised I wanted to go further than that - I wanted to extend this offer to all key workers who have been keeping this country going and, more often than not, been going above and beyond their normal duties.

Since launching this giveaway I have been so touched by the stories people have shared. The outpouring of love for these selfless individuals is quite humbling and each one has been nominated by someone who really wants to say thank you.

If you want to say thank you to someone who is making a difference out there you can nominate them, and the lucky winner will receive a free massage! After all, don't they all deserve a bit of TLC after everything they've done?

Simply nominate your chosen key worker by filling the form, using the web address below, saying why you think they deserve a free massage.

www.esther-smith-massage.co.uk/key-worker-prize-draw

Nominations must be in by 31st May and nominees must be able to get to my treatment room at The Gardens in Bromham in order to receive their prize if they are lucky enough to win.

You can find full details at the web address above. Good luck!



Esther's treatment room

SCHOOL'S PERMANENT HEAD IS APPOINTED AND EMERGING BUILD PLANS ARE SHARED



Sean McKeown, the new executive head of Silverwood School

The £33 million school for special needs pupils in Rowde is entering a new chapter as a permanent head is appointed and emerging plans for the new school build are shared.

On September 1st 2020, the three school sites of Larkrise, Rowdeford and St Nicholas came together as one school now known as Silverwood School.

At the time, Sean McKeown was appointed as interim executive headteacher and he has recently been appointed by the school governing board to take on the headship permanently.

Mr McKeown will play a key role supporting the new school in its transformation, alongside the senior leadership team within all three sites. He said: "I am absolutely thrilled to have been appointed as the permanent executive headteacher of Silverwood School. Our school has the most amazing children, young people and dedicated staff imaginable. There is absolutely no doubt in my mind that together we will create an extraordinary school of which our whole community will be exceptionally proud."

Cllr Laura Mayes, Wiltshire Council's cabinet member for children, education and skills said: "These are exciting times for Silverwood School and I am pleased Mr McKeown has taken on this headship at a crucial time. The new build is an essential part of the wider vision to create a system of excellence to ensure we provide the very best education for our pupils in an environment where they can thrive."

Mr McKeown's permanent appointment is made as the local community is encouraged to view emerging plans of the proposed school build. The aim is to create up to 400 places on the Rowde site, with construction on the new facilities expected to start in summer 2021.

The designs were shared at a virtual meeting on March 3. It included a presentation from construction partners Willmott Dixon setting out how the school will meet pupils' needs.

The council says the school will be sustainably built with an aim to achieve net zero carbon in operation, and will benefit the community in terms of employment and facilities. The full planning application for the build at the Rowde site will be submitted later in spring and is shaped by feedback from a series of design workshops with the school community, local people, families and staff.

Some preliminary archaeological survey work has already been carried out on the site.

The £33m programme will be a major step forward in creating a first-class and inclusive education for SEND pupils and their families in North Wiltshire.

Pupils will continue to get involved at all stages of the project, getting to know more about the many different types of roles and people who get involved in construction, and to feel a real sense of ownership over the new building.



Concept art for the new build

Lucy Townsend, corporate director people at Wiltshire Council, said: "Silverwood School is entering a new chapter in this mission and the new build is a key part of the wider vision to achieve this."

The designs for the school include small teaching clusters that will provide a range of specialist teaching spaces, therapeutic support, and quiet dining. Each cluster will be designed to offer plenty of space to move around while maximising natural daylight and ventilation. In addition, there will be a hydrotherapy pool and outdoor learning provision.

£20,000 BOOST FOR NEGLECTED PLAYPARK IN ROWDE

A dangerous, closed-off playpark on Silverlands Road in Rowde will enjoy a new lease of life thanks to a grant of £20,000.



Lisa and Isla; Kiesha with Kamarni and Jalen; and councillor Laura Mayes can't wait for the park to be refurbished so children can return to play

Children from the surrounding area have been unable to access the cordoned-off play area throughout the pandemic due to damaged and outdated equipment. Rowde Parish Council have long since called for change at the site, and have had their prayers answered with news of a five-figure sum. The park will, after its transformation, also be passed into the ownership of the Parish Council.

Cabinet Member Children, Laura Mayes has helped secure £20,000 in funding from Wiltshire Council which will go towards a complete redesign of the area.

The parish council are eager for kids, or adults, with ideas to come forward and share what they think should be included in the refurbishment project. Final ideas will then be collated and put to the community.

"The amount of money was a huge and welcome surprise," said Lisa Wills, of Rowde Parish Council. "The Parish Council was trying for a while to find a solution. We want people to get in touch with their ideas and ideally would have the park open by the summer holidays. There's the schools in the same area as well, so we want to make sure there are areas that suit them to enjoy as well."

Cllr Mayes added: "The park has been closed for a long time which has been disappointing for local families. I'm glad to have helped facilitate the new funding for what will hopefully be a really good space for the community."

Lisa's daughter Isla and Kiesha McKenzie's children Kamarni and Jalen, have already suggested a range of fun ideas such as a big slide, trampolines, a football area and even a zipwire.

Email your own ideas to rowdeparishcouncil@gmail.com or laura.mayes@wiltshire.gov.uk

RISE OF COVID CASES IN DEVIZES AND SURROUNDING VILLAGES LEAD TO COMPLACENCY FEARS



Covid-19 cases in pockets of Wiltshire rose substantially during February according to the public figures – leading to reminders for people to stick to the guidance.

Kate Blackburn, director of public health for Wiltshire, warned that it was vital for residents to continue to abide by the current rules to keep infection rates down. "That means staying at home as much as possible and minimising contact with others," she said.

"With the ongoing vaccine rollout providing a clear route out of this situation, we must not let our guards down now and undo the recent progress made. We've seen how quickly the virus can spread so any complacency now could have a negative impact later on. We thank everyone for their support."

Devizes town councillor, Kelvin Nash said: "Cases are on the rise and we have to all be vigilant still and keep up with the current restrictions. People have perhaps become complacent, so it is easy to drop your guard."

He was echoed by Roundway councillor Laura Mayes who has encouraged people to keep to the rules and "follow current restrictions."

Cllr Jonathon Seed added, "Despite the outstanding programme of vaccination that has been rolled out by our local surgeries, now is not the time to relax our guard and we need to maintain our social distancing, only go out for essentials or for work if we can't work from home, and for exercise."



NEW BUILD AREA INVESTIGATED

Site Investigation Contractors were recently seen checking out the ground to the east of Reed Place and adjacent to the school playing fields where it is planned to build ten new houses.

It is expected that the permissive footpath in the area will be rerouted where necessary.



Three temporary rectangular trenches were dug and as you can see in the photograph above, the high water table on that day was revealed. And as one of the contractors quipped, "I suppose it was to be expected as the name of the area is Marsh Lane!"

Residents in the area recently received letters informing them of the intended building work.

UPDATE ON THE PROPOSED CLOSURE OF FURLONG CLOSE



Dear Alan,

As your readers will be aware, in October last year, Hft announced that it had reached a joint decision with Wiltshire Council to evict the vulnerable residents of Furlong Close, close the site and sell off the land for housing development. The shocked families, who had not been consulted, asked to talk to Hft and the Council about this terrible decision, but were told it was "a done deal".

Many of the residents have lived at Furlong Close for more than 20 years. They have formed lifelong friendships there and developed close relationships with their carers, whom they know and trust and who provide them with kind and professional care. The residents' disabilities make change very stressful for them. Breaking up their happy community and forcibly uprooting them from their settled home at Furlong Close, to scatter them to new and strange places, will be traumatic and distressing for them. In some cases, that trauma will be life-shortening. The residents are happy in Rowde and, as your readers know, are well integrated into the local community, where they attend church, frequent the local pubs and cafes and have part-time work. They do not want to leave their settled home and they and their families are in despair at the prospect that they will be forced to do so.

All of this is made all the more cruel by the fact that there is no good reason why Furlong Close should be closed. The Care Quality Commission gives the site high marks for meeting the residents' needs and for treating them with "compassion, kindness, dignity and respect". The CQC's most recent report on Furlong Close (from April 2020) described Furlong Close as having "a very happy family atmosphere" and observed that the residents "are very caring of each other" and are "living a full and active life in a caring and safe environment".

Hft and the Council, however, say that the community model of care provided by Furlong

Close is “outmoded” and, on that basis, want to break up this longstanding and happy community and disperse the residents to live a lonely existence in small flats in Trowbridge and Chippenham. This is unnecessary and cruel. The residents and their families deserve better.

Since that decision in October, the local community has rallied around the residents and their families. Our petition – <https://www.change.org/p/hft-and-wiltshire-council-stop-the-closure-of-hft-in-rowde> – has gathered an amazing 43,000 signatures from all over Wiltshire and beyond. The residents and their families and friends are extremely grateful to your readers and the local community for that support, which succeeded in getting the closure decision deferred from its original date of June 2021. The closure decision, however, has not been withdrawn and Furlong Close remains slated for closure.

The families continue to fight, however, for it to be saved and are optimistic that this will be achieved. Since I last wrote to you there have been some profoundly disturbing developments, but there is a ray of hope.

The most extraordinary and disturbing of these recent developments is that, on 15 February, the CEO of Hft, Kirsty Matthews, wrote to Wiltshire Council, giving notice under its contracts with the Council. That notice expires on 19 May 2021. Hft has also announced its intention to withdraw altogether from the provision of care services in Wiltshire.

In explaining why it has taken this dramatic step, Hft has said that the Council's conduct has made any commercial relationship between it and Hft “untenable”. Hft says that the Council, in saying publicly that it was Hft alone which decided to close Furlong Close, “has lied about the commitments and decisions the Council made to Hft”. Hft says that, far from being uninvolved in that decision, the Council was in fact the moving party behind it and that, in denying this, the Council is trying to “hide behind” Hft. Further, as if this accusation of lying was not bad enough, in the same letter, Ms Matthews also says that Hft has “witnessed significant breaches by the Council of its statutory duties towards the service users at Rowde, which it is not prepared to be associated with”.

Unsurprisingly, allegations by a major, reputable national charity (HRH Princess Anne is its patron) that Wiltshire Council has “lied” about its role in the closure decision and breached its statutory duties towards the residents of Furlong Close have given rise to calls for an independent inquiry into the conduct of the Council. On 23 February, the leader of Wiltshire Council, Philip Whitehead, ordered an internal, rapid scrutiny exercise, but this has now been shelved, so these accusations will remain hanging over the head of the Council until after the election.

All of this has been bad news for the residents and their families, as the clock is now ticking towards the termination of Hft's contract to provide care at Furlong Close on 19 May. Fortunately, however, Hft has offered the Council the opportunity to bring in a new operator and lease the site for at least two years. This would avert the catastrophe and trauma of a closure later this year, and give the families the chance to find a long-term solution to save Furlong Close for its current and future residents. But that offer has now sat on the table for four weeks, while Hft and the Council have busied themselves writing lawyer's letters to each other.

We therefore need the help of your readers to press Wiltshire Council and Hft to do this deal, save Furlong Close for at least two years and avoid the trauma and distress that will be suffered if the residents are forced to leave in the near term. While Hft and the Council prevaricate, vulnerable and innocent people are suffering and we are calling for decisive action.

If your readers would like to help us, can they please do two things:

- Email the Leader of Wiltshire Council, Philip Whitehead and the CEO of Hft, Kirsty Matthews and urge them to work together urgently to save Furlong Close; at Philip.Whitehead@wiltshire.gov.uk and kirsty.matthews@hft.org.au; and
- Press your local candidates for Council about what they are going to do to save Furlong Close, and don't be fobbed off with waffle about “having discussions” or “keeping people updated”.

Thank you to the people of Rowde for their continuing support for the vulnerable residents of Furlong Close.

Yours faithfully, Mark J Steele

LOCAL ART SHOP NOW ONLINE



The Lawrence Art Society now have an online shop which features local artists. Have a look through some wonderful artworks at:

<https://lawrenceartsociety.co.uk/shop/>

VOLUNTEER 'LOCK ANGELS' NEEDED FOR THE CAEN HILL FLIGHT



Waterways charity the Canal & River Trust is looking for volunteers to give some of their time as lock keepers on the Kennet & Avon Canal in Bath and at the Caen Hill Flight.

Lock keepers have kept Britain's canals working smoothly for centuries and are one of the oldest traditions of the waterways. In the 21st century the role is also as 'face of the waterway'. Once described by happy boaters on the Kennet & Avon Canal as 'lock angels' they provide a friendly welcome, as they help boaters through the sometimes unfamiliar task of navigating the locks.

Volunteer lock keepers also keep these picturesque locations looking their very best – including removing litter and managing vegetation.

At Caen Hill the role is slightly different.

From April to October the locks are still welcoming boats up until 8pm. So, The Trust is looking for evening volunteer lock keepers to keep the flight running safely during the summer evenings. It's a chance to get involved in the running of a 'wonder of the waterways' while enjoying the stunning countryside at sunset.

The Canal & River Trust's volunteer development co-ordinator Steve Manzi said: "Our locks attract a lot of interest from boaters moving through them as well as curious onlookers on the towpath. So, volunteer lock keepers play a key role. They are ambassadors for the charity, providers of information, and a safe pair of hands to guide boats through the locks. This is a great opportunity for anyone looking for something a bit different. All we ask for are enthusiasm and a willingness to learn. The Canal & River Trust will give you all the training you need and you'll soon be out on the canal, learning new skills and loving your life with the locks!"

The Trust welcomes applications from anyone over 18 and able to spare at least one day a week. No experience is needed, just a 'can-do' attitude and a willingness to get involved.

After an induction and training the roles start fully in April and run through to October.

Information on how to apply can be found on the Canal & River Trust website www.canalrivertrust.org.uk/volunteer

FEARS OVER SAFETY AND SURGE OF LITTER AT ROUNDWAY HILL

Fears have been raised about people's safety after a recent surge in vandalism and antisocial behaviour on historic Roundway Hill and the surrounding area.

Farmers have had to spend money on repairing vandalised fences and replacing padlocks cut by trespassers. Parents have even dropped off their children with bags of alcohol. As warmer weather approaches, people have been urged by police to keep to safe areas and take litter home with them.

Wiltshire Police have confirmed that they regularly patrol the area.

The rolling hills are historically important as the site of Battle of Roundway Down, fought on 13 July 1643, during the First English Civil War when a Royalist cavalry force under Lord Wilmot won a crushing victory over the Parliamentarians under Sir William Waller.

But signs detailing the history of the battle have been torn down by vandals.



The space where the signs used to be

Matthew and Gretchen Winter of Netherstreet Farm have reported a marked increase in organised gatherings of young people and they're worried someone could be hurt. The area is difficult for emergency services to access and the couple fear that the hill's sheer drops could prove fatal, especially to



Matthew Winter with a whole crate of litter

It's not just the Winters pleading for peace. John Butler, of Rowdefield Farm, has also noticed an increase in vandalism and trespass around his business. Cyclists, motorcyclists and horse riders had been riding straight through his crops, causing significant damage and loss.

Other organisations have also struggled to combat an increase in anti-social in the area.

The worrying array of incidents has led to calls for greater awareness of the general public and for Wiltshire Police to take a closer look at the lay of the land.

Wiltshire Police said: "Officers do proactively patrol this beauty spot. If any members of the public witness such incidents, we would ask them to report them to us either via 101 or our website so appropriate action can be taken."



The sheer drops are a safety concern for late night gatherings

a drugged or drunk teenager. The couple maintain they don't want to ruin the fun, but that the amount of anti-social behaviour has now become a very real problem. Gretchen said: "Parents have dropped their children at the bottom of Roundway Hill with bags of alcohol and let them attend gatherings during lockdown at the top. We aren't being precious - we just really don't want anyone to hurt themselves, there's almost a vertical drop on the side of the hill."

Recently, Matthew collected an entire basket of litter in the space of just ten minutes. Dumped rubbish included a bag of dumped takeaway boxes, abandoned cans and even the packaging for an ingrowing hair remover kit.



Wiltshire Mind



Your Local Mental Health Charity

Depressed? Anxious? Stuck? Grieving?
Stressed? Not Managing?

COUNSELLING SERVICE

A safe, confidential and personal place to talk, and help you to move forward

A low cost counselling service in the community for all

Initial Assessment Free of Charge

For further information please contact:

Wiltshire Mind
24a High Street
Melksham
SN12 6LA

Email: counselling@wiltshiremind.co.uk

Phone 01225 706532

Reg Charity Number: 1113751 Reg Company Number: 5498430

Are you age 60+?

Come and join our friendly exercise class and help maintain/improve your mobility
(Exercises may be done seated or standing)

Mondays

2.30pm – 3.30pm

followed by coffee/tea and a chat at Rowde Village Hall

Cost : £3.00

For more information contact:

Yvonne 01380 723086

yve@thegablesdevizes.co.uk

ACTIVE PLUS



RD

RUDI DALBY

**LOCAL LASTING POWER OF ATTORNEY
SPECIALIST**

THINK: who would arrange your care and finances for you if you were to lose capacity? Without LPA's in place this is not possible

ACT NOW: LPA's can only be put in place whilst you have the capacity to do so

~ Home and evening appointments

~ Professional, efficient and friendly personalised service tailored to you

Safeguard yourself, your family, your assets and your wishes for now and for the future.

07791879774 rudidalby@gmail.com

Contact me for queries and further information

rudidalby@gmail.com

07791879774

**Easterton
Vehicles Ltd.**

ATA Automotive
Technician Accreditation
Master Technician AT 1803087958

**Independent
BMW, Mercedes, VW, Audi
and Skoda Specialists
at less than 1/2 dealer prices.
All Makes Mot's & Servicing.**

Award Winning Knowledge Of Modern Motor Vehicles
Champion Bright Spark 2006 - 2nd
Auto Trade Technician 1999 - Winner

John Kyte, Director

Unit 1 Hillcroft Farm, 5 Easterton Sands, Devizes
Wiltshire, SN10 4PY

Call: 01380 812192 or 01380 816436

www.eastertonvehicles.com

HESTIA

SOFT FURNISHINGS

For beautiful handmade curtains, blinds, loose covers and soft furnishings.

Browse through pattern books from James Hare, Warwick, Elanbach and many more.
Free measuring and quotations.

Telephone 07982 985925
01380 859949
01249 815334



Adams Renovations Property Services



www.adamsrenovations.co.uk

For All Your Property Requirements:

Painting, Decorating (interior & exterior)
Tiling & Flooring
Paving, Decking & Patios
Guttering & Facias
Light Building Works
Repair & Renovation Work
Bathroom Specialists

Competitive prices from an honest & reliable worker.

No job too small. All areas of Wiltshire covered.

Fully insured. References available.

Email: info@adamsrenovations.co.uk

Telephone: 01380 500549

Mobile: 07725 638165

FREE CAT NEUTERING



Do you want to neuter your kittens and cats?



You know it's the right thing to do, and.. **we are here to help you!**

RSPCA Wiltshire Mid Branch

will pay, for a limited period, the cost of neutering and, at the same time, micro-chipping your cats and kittens if you live in **Devizes, Melksham, Westbury or Warminster** or the surrounding villages.

To apply for financial help to have your cats neutered, and, if you wish, micro-chipped at the same time, please send a blank e-mail to cnwiltsom@gmail.com

We will reply with a link to the application form.

If you prefer you can telephone 07494-240622

YOU CAN APPLY FROM 25TH FEB. UNTIL 30TH APRIL 2021



Wiltshire Mid Branch
Registered charity no. 205925

Working together
to help you
and your pets



Registered charity no. 203641



Food Deliveries & Call & Collect available from our Farm Shop at Lower Farm

Fresh local Meat Products, Fresh Bread & Cakes Daily, Fresh Fruit & Veg Daily, Dairy, Cheese, Yogurts, Dried Goods, Sweets & Chocolate and lots more

Free Delivery to our local Rowde Residents – Just get in touch and let us know what you need

www.spottydogfarmshop.co.uk

Phone: 01380 720002

Email: hello@spottydogfarmshop.co.uk

Facebook Message our Page

www.facebook.co.uk/spottydogfarmshop

PHILIP HALE

Clinical Sports & Remedial Massage Therapist

Promoting a healthy body and mind

PRE TREATMENT POSTURAL ASSESSMENT

Soft Tissue Massage

SPORTS INJURIES

Training & Muscle Conditioning
Preparation

TREATMENT & PREVENTION OF: MUSCLE
INJURY, BACK PAIN, POOR POSTURE AND
EVERYDAY STRESSES & STRAINS

Pre, Inter & Post Event Treatment &
Recovery

WILTSHIRE BASED & MOBILE CLINIC

Please call for an appointment

TELEPHONE: 07825180179

EMAIL: reception@philiphalesportsclinic.co.uk

WEBSITE: www.philiphalesportsclinic.co.uk

INDUSTRY MEMBERSHIP AT THE
LONDON SCHOOL OF SPORTS &
REMEDIAL MASSAGE

4CHILDREN



What your 4Children Children's Centre offers

Groups and services that run from your local centre are designed for families with children under five. Your centre can provide you with information or advice on all aspects of family life, so drop in to visit us or call one of our staff team.

**For further
information or to get
involved, telephone
01380 739835**



Sure Start

Wiltshire Council



Canal Boat Rental

From the Wharf below
Caen Hill Locks

www.foxhangers.co.uk

Choose from our fleet of 14 modern
narrowboats, all built new at Foxhangers

Visit our website for complete details of our

Weekend Breaks

Midweek breaks

Weekly Breaks

More to Foxhangers than boat hire!

Bespoke boat building/Re-fits/Painting

All aspects of boat engineering

Chandlery

Tel: 01380 828795

4 self-catering units and a campsite
available at Lower Foxhangers
Visit www.foxhangers.com for details

WHISTLEY CANINE COUNTRY CLUB



WHISTLEY CANINE COUNTRY CLUB
AND CATTERY

**Our Modern Luxury Heated Cattery
For Tiny Tigers is Now Open**

Luxury Holiday Venue For Our
Canine Friends

Spacious Suites Under-Floor Heating
Day Care Facility Inspections Welcome

Potterne Devizes

01380 738189/726330

Please see our website for more details

www.whistleykennels.co.uk



FARM FRESH LOCAL PRODUCE

We only source the best local products from our own farm and local producers, all bursting with flavour and reasonably priced

Poulshot Lodge Farm, Poulshot, Devizes, SN10 1RQ

Tel- 01380 827202

Open Tuesday – Friday 10am-5pm, Saturday 9am-4pm

For more information, to follow our blog or subscribe to our newsletter visit

www.poulshotlodgefarm.co.uk

find us on Facebook & Instagram as well



@poulshotlodgefarm

Theodora Wildcroft



ROWDE VILLAGE HALL

WEDNESDAYS 10.30 AM - 12

Full term, concession and drop-in rates available.
Beginners and experienced yogis are welcome.
Call or email for bookings and further details.



theo@wildyoga.co.uk 07818401110 www.wildyoga.co.uk
Rebalance mind, body and soul with a smile.

Martina's Professional Cleaning Services

Is cleaning and ironing taking up your valuable time?

We guarantee the best price for the perfect job

Regular Cleaning

Spring Cleaning

Office Cleaning

Oven Cleaning

Window Cleaning

Carpet Cleaning

Ironing

Fully insured and absolute privacy assured

The same regular cleaner guaranteed

Call Martina on 07859818198

JOHN STUART FUNERAL SERVICE LIMITED

18 The Britox
Devizes
Wiltshire SN10 1AJ
Tel: 01380 729459



Funerals Arranged
24 Hour Service
Private Chapel of Rest

ROWDE VILLAGE



Have you visited the village website yet? You will find it at www.rowdevillage.org
(Amongst many other things, you can see your Rowde Village News in glorious full colour!)

Please note that our Rowde Village website manager is Rebekah Jeffries and she can be contacted at rowdeparishcouncil@gmail.com or 01380 720988.

Trevor Hale

NPTC Certified (arb) Fully Insured

City &
Guilds
NPTC



Tree Surgery

Felling ▪ Reductions ▪ Dismantles
Chipping ▪ Stumpremoval ▪ Hedging

Very Competitive Pricing

07737 934777

www.wiltshiretreesurgery.co.uk

Seend Cleeve

arts
together ...ageing creatively

Is an award-winning local charity, seeking to reduce loneliness and isolation and in doing so improve health and well being for vulnerable elderly people through participation in the arts. We run weekly sessions in Pewsey, Marlborough and Devizes and are looking for friends and supporters to join us in fundraising, raise local awareness and help at our sessions.

COULD YOU PLEDGE SOME TIME IN 2017 AND HELP BY?

- **Businesses:** Adopting us as your 'Charity or Choice' or supporting us in other ways?
- **Individuals:** Help spread the word in your community, join our 'friends' scheme, run a fundraiser for us, help promote our work?
- **Groups:** We have plenty of ideas and resources to support groups involvement

For more info about our activities or being involved

liz.lavender@artstogether.co.uk / 07780860922

www.artstogether.co.uk Registered Charity 1109432

HAIR AT HOME

ROWDE

Hairdressing salon style in
Rowde or mobile, you choose!

Contact Louise Allan on 07811 948374
or Email louiseallan_1@hotmail.co.uk

Very experienceds ex salon stylist

Cutting, families, colouring, perming,
children welcome



HAIR AT HOME

experience a little hair magic

Rowde Village News Pledge

The Rowde village News is independent of political parties, private interests and government. Our policy is to provide readers with a complete, fair, accurate and balanced news and information service.

Although we are a voluntary run, nonprofit making publication we still do our best to adhere to the Press Complaints Commission's Code of Practice. While we try hard to avoid mistakes, some errors can occur during the part time and hectic process of producing one of Wiltshire's largest and most regarded village magazines (apparently, from feedback received over recent years).

Our policy is to correct errors of fact as soon as possible and, where appropriate, apologise. If you find an error of concern, please contact the editor (contact details on page 3).

Thank you for your continued support and understanding.

Alan Watters, Editor

LETTERS

HUGE THANKS!

Congratulations and huge thanks to Chippy and his team for all their hard work in producing some wonderful takeaways during the past 9 weeks.

Whilst we are sorry they are coming to an end, I am sure we are all looking forward to April 12th even more in the knowledge that there will be opportunities to eat out on the lovely terrace, and even in the garden weather permitting, and continue to enjoy many delicious dishes (and the odd glass of wine!).

Thanks to the G&D, Friday evenings have been one of the rare highlights of the week during this long (and hopefully last) lockdown.

Rosie Berry

A POEM FOR APRIL

Hi Alan,

I am Carlo's wife; we met many times at the church coffee morning. Since life has been different, I have started writing poetry. I thought you might like one about April for your next edition if you have space. If it's too long please cut out some verses.

Carlo and I do enjoy the magazine. Especially when we were newcomers to the village, it helped us a lot to find out what was going on. Carlo always looks for the jokes first!

Best Wishes, Barbara

(see Barbara's wonderful poem on next page, Ed)

SILVERLANDS PARK REFURBISHMENT

Wiltshire Council has confirmed that there is



money available to spend on improving this park. The Parish Council would like to invite the children in our community to participate in giving us ideas of what they would like to see. From this we can put together a few plans for the children then to vote on.

If you would be interested in giving your ideas, please email rpc.lisa.youth@gmail.com or if your child would like to draw a plan of what they would like to see in the park, you can post a copy through my door at 21, Consciences Cottages, Devizes Road, Rowde.

Cllr Lisa Wills.

AN APPEAL ON BEHALF OF AUDREY

Dear Alan,

In recent editions, you have published a number of articles and letters about the efforts of the families of the 34 vulnerable residents of Furlong Close to stop their relatives being forcibly "moved on" from their long-term home in Rowde.

One of those residents is my cousin, David. David is 65 and has suffered from serious learning disabilities all his life. He cannot live alone. David has called Furlong Close his home for 18 years and he is happy and settled there.

David's mother, Audrey, died last week. Audrey was 95 years old. Until the announcement last year that Furlong Close was to be shut down, Audrey was content in the knowledge that David was settled for life in a secure and happy home. Indeed, for many years, she had been promised by the charity which runs Furlong Close, the Home Farm Trust (now Hft), that David had a "home for life". It therefore came as a terrible shock to her when it was announced in October that, without consulting anyone, Hft and Wiltshire Council had come to a "joint decision" that David and the other residents should be "moved on" and the site sold for development for housing.

This was a sad end to a life of uncomplaining service. During the war, Audrey served as a Red Cross nurse at the renowned plastic surgery unit at the Queen Victoria Hospital in East Grinstead, treating airmen who had suffered terrible burns in battle. From the time David was born in 1955, Audrey devoted her life to caring for him and others with learning disabilities, volunteering with the charity Mencap and serving on its Board for almost 20 years.

David's father, David senior, died three years ago. He also gave good service to his country. In February 1944, he was serving as a lieutenant on the destroyer HMS Warwick when it was torpedoed off the coast of Cornwall and sank in minutes, with the loss of half its crew. David senior only survived because, as he came on watch, a seaman had noticed that David's life vest was faulty and fetched him another.

How cruel then, that after a long and blameless life, Audrey was condemned, by this heartless decision by Wiltshire Council and Hft, to spend her last months losing sleep about what was going to happen to her dear son David, knowing that she would not be here to help him through this terrible time.

Of course, such things sometimes have to happen, but that is not the case here. There is no good reason why Furlong Close should be shut down. The most recent report on Furlong Close by the Care Quality Commission confirmed

LETTERS

that it was “Good” at meeting the needs of the residents and treated them with “compassion, kindness, dignity and respect”. The CQC further reported that Furlong Close has “a very happy family atmosphere”, that the residents “are very caring of each other” and that they are “living a full and active life in a caring and safe environment”. For many residents, Furlong Close has been their home for more than 20 years. They have formed life-long friendships there and are well-cared for by staff they know and trust. Their disabilities mean that change is extremely stressful for them. Breaking up their happy community, uprooting them and scattering them to live in new and strange places will be traumatic and distressing. In some cases, the trauma will shorten their lives.

This can and should be stopped. Please, in Audrey’s memory, if you want to help David and his friends, email Philip.Whitehead@wiltshire.gov.uk and Laura.Mayes@wiltshire.gov.uk and kirsty.matthews@hft.org.au and ask them to act now to save Furlong Close.

Yours sincerely,

Mark Steele

LIFE IN LOCKDOWN

Hello Alan,

I have just spoken to Jackie Bawden about your magazine, the Rowde Village news, and how we enjoy the read.

If you are looking for any material, this is a piece that I wrote when we were in the first lockdown.

Enjoy.

Kind Regards

Lorraine Howe, Caen Hill Marina Manager

(see Lorraine’s excellent story on page 8. Ed)

APRIL 2021

(a poem by Barbara Zaccarelli of Rowde)

**April, you are famed for showers,
And for longer daylight hours,
Warmer sunshine you will bring,
Now at last, it’s really spring.**

**This year, more than any other,
We’ll enjoy the balmy weather,
Meet some friends we’ve missed, at last,
Despondent thoughts leave in the past.**

**Now, more grateful than before,
Simple pleasures mean much more,
Easter’s message brings us hope,
Peace, new life, forgiving love.**

**Winter was so cold and long,
Let’s hear the birds burst into song,
They don all their brightest plumes,
And sing for us their cheeriest tunes.**

**Blossoms on once dormant trees,
Bring fragrance on the gentle breeze,
Hedgerows too, which seemed asleep,
With fresh green leaves starting to peep.**

**Drive away the winter’s blues,
Putting on your walking shoes,
Explore our lovely Rowde again,
Wander down a winding lane.**

**Watch majestic, graceful swans,
As they glide and sail along,
Barges full of life once more,
As their travellers explore.**

**Come on April, cheer us up!
Of winter days we’ve had enough,
Welcome to your sun and rain,
Let vibrant rainbows smile again!**

Charles S. Winchcombe & Son
INDEPENDENT FAMILY FUNERAL DIRECTORS & MEMORIAL CRAFTSMEN
Est. 1932



- Longest established
- Family owned and run
- Qualified and Licensed
- Available 24 hours a day
- Each funeral personalised
- Pre-paid funeral plans
- Craftsman made memorials



01380 722500 Winchcombe House, 37 New Park Street, Devizes, SN10 1DT www.wiltshirefunerals.co.uk

ROWDE MEMORIES

FROM THE DAYS WHEN ROWDE WAS MUCH SMALLER



1950s map sent in by Maggie Cerretelli

Taken from a larger map of the area that is hanging in the library at Northlands Surgery Calne. Shows how Rowde has grown over the last 60+ years.

Thanks Maggie, Ed

Also showing Rowdeford when it was still in Bromham parish - the blue dotted line shows the parish boundary as it was back then. Rowde Mill, shown here, is still in Bromham today! The small change to the Rowde/Bromham parish boundary at this spot took place in the 1970s.

Dennis Powney

I remember walking the footpath from the village to conscience lane and walking the footpaths through the woods, known then as the big wood, the withybed and the 3 bridges.

The stream that is fed from mother Anthony's well was so pure in the 50s that my uncle Jack, who used to work the woods made us tea from it - a taste all of its own!

Penny Cross

It's still called Big wood. Beautiful walk and two streams go through the woods and leave as one. Its such a pretty place.

Sophie Hawkins

JOKES

What do lawn ornaments do over winter break? Go gnome for the holidays.

Yesterday, I changed a light bulb, crossed the street, and walked into a bar. My life is a joke.

I wondered what my parents did to fight boredom before the internet. I asked my fifteen brothers and sisters and they didn't know either.

How did Darth Vader know what Luke got him for Christmas? He felt his presents.

My son asked, "Dad, what are condoms for?" "Usually to avoid answering questions like these," I replied.

I bought a dog off a blacksmith today. As soon as I got it home it made a bolt for the door.

CORONAVIRUS - BLOOD DONORS URGENTLY NEEDED!

And yes, you can continue to donate if you are over 70, well and have given a full donation in the last two years. There is no longer a restriction because of government guidelines.

At the moment we particularly need:

Male donors - men can donate more often than women.

Black donors - Ro blood is needed and a common type for black donors.

O negative donors - hospitals need this blood type most regularly, as it can be given to all patients.

We also urgently need people who have had coronavirus, or symptoms, to donate plasma (a special plasma appointment is required).

How to register to be a blood donor?

Check you are able to give blood. Register to be a donor online, or call 0300 123 23 23. Sign in to your online account and find an appointment – a number of appointments can be booked in advance.

You can also download the NHS Give Blood App to book or manage your appointments.

ROWDEY COW

Locally Sourced Food
Children's Play Area

Spectacular Views
Miniature Ponies

Delicious Home Made Ice Cream
made using our own milk fresh from the farm

FARM CAFE & ICE CREAM PARLOUR

Open 7 Days a Week

Taste of the West South West England GOLD 2016

Cooked Breakfasts

Taste of the West South West England GOLD 2015

Full Lunch and Snack Menu
Children's Menu Available
Ice Cream Available All Day
Home Made Cakes and Cream Teas

all our food is freshly made from local produce

Lower Farm, Devizes Road (A342), Rowde, Nr Devizes SN10 2LX
Tel: 01380 829666 | www.rowdeycow.co.uk

The Tranquil Moment

HEALTH & BEAUTY CLINIC

Unit 2 Manor House Yard, Poulshot Road, POULSHOT,
DEVIZES, WILTSHIRE SN10 1RY

TELEPHONE: 01380 828297

www.tranquilmoment.co.uk

email: tranquilmoment@live.co.uk

Decleor facials,
microdermabrasion, massage,
sports massage and injury clinic,
shrinking Violet fat loss body wraps,
CND shellac and Brisa Lite
sculpting gel nails, CND manicure
and pedicure, Apilus electrolysis,
CACI non surgical face lift,
Decleor and CND stockist

Please call Jo at The Tranquil Moment Health and Beauty Clinic to make an appointment

Call us or follow us on Facebook for up to date offers and news

VILLAGE DIARY

Parish Council Meetings

(All Wednesdays 7.30pm - venues to be confirmed)

21st April 2021

12th May 2021

9th June 2021

14th July 2021

No meeting in August

8th September 2021

13th October 2021

10th November 2021

8th December 2021

By zoom, until further notice. Otherwise meetings will be held in the Village Hall. Start time 7.30pm

The Board Room

Reneleo House

46, New Park St,

Devizes

SN10 1DS

sycamorecentre.devizes@yahoo.co.uk
www.careconfidential.com/devizes

The SYCAMORE
Centre

07762 382913

A Pregnancy Choices Centre

Lending with Heart and Mind

Wiltshire Council fund a not-for-profit loan scheme for homeowners.*

If you have lived in your home for over 5 years and:

- **Are over 60; or**
- **Are in receipt of State Benefits; or**
- **Have children under 16 living with you.**

You may be eligible for a home improvement loan to keep your home warm, safe, and suitable for your needs.

Lendology CIC work in partnership with Wiltshire Council to deliver the council subsidised loan scheme. Our knowledgeable team of advisers will guide you through the process of applying.

To book a no-obligation assessment, or for more information, visit www.lendology.org.uk or call **01823 461099**.

Heatherton Park Studios, Bradford on Tone, Taunton, TA4 1EU

*subject to eligibility



Magazine Submission Deadlines for 2021

(bi-monthly)

15th May

15th July

15th September

15th November

Modern & Traditional

Designed Memorials

M J SLY

Memorial Stonemason - New Memorials

Additional Inscriptions - Restorations

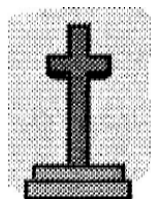
Free Home Visits & Brochure

Tel: Marlborough (01672) 516797

www.mjsly.co.uk

Email: info@mjsly.co.uk

Workshop & Showroom at
Pelhams Court, London Road
Marlborough



FREE CLASSIFIED ADS

FOR SALE

3x mens suits,

1x Pierre Cardin French Navy,

1x Principles evening suit Black,

1x Douglas light grey check.

1 pair of Austin Reed navy trousers

All are in pure wool and in immaculate condition. It is such a waste and would be happy to be `named a price`.

WANTED

An `Ottoman` stool with lid in reasonable condition that I could refurbish/upholster if necessary.

Contact for all of the above is Jim on 07413 618023 or 07413 592935

FOR SALE

Stuffed Barn Owl in excellent condition.

Open to offers - any money goes to charity - *Phone Frank on 01380 720912*

FOR SALE

Very Large Oblong Gold Bevel Edged Mirror (1m 32 x 1m 10) £48

Small Gold Mirror (37cm x 55cm) £10

Contact *Chris Benmasaud*

01380 726394 or 07776 102624

GARDEN TOOL REPAIRS

For all your replacement handles to your garden tools contact 01380 721811

FOR SALE

I have several items in excellent condition:

Pulsar wristwatch in working order

Small Carriage Clock in working order

Beautiful Owl from the Leonardo Collection

Good size porcelain Shire Horse

Large collection of Lilliput Lane cottages

Mini Wi-Fi extender multi kit (works with ALL Broadband providers)

Email or text me for lists, photos or prices
Alan, 07886870053 watters.alan@gmail.com

How to advertise here for FREE:

If you live locally and have an item to sell then just contact Julie on juliebaker72@yahoo.co.uk or telephone 07796690413, giving a brief description of the item, the amount you would like for it, and a contact telephone number (name optional). 'Wanted' ads also accepted. **Note - private advertisers only**

Please also let us know whether your item sells or not so that we can either remove it or keep it in for subsequent months

Sudoku (difficult this month)

	4						9	
					2		4	1
	6					5		
	9		6				3	
	2	3	5					
5	7	6		9	3			
			3	2				
			9	4	8	6		2
9			7					

Last Month's Solution

6	1	2	8	5	9	7	4	3
9	8	3	7	4	6	2	5	1
7	5	4	2	3	1	6	8	9
3	2	5	1	8	7	9	6	4
1	7	9	3	6	4	5	2	8
8	4	6	5	9	2	1	3	7
4	3	1	9	2	5	8	7	6
5	6	7	4	1	8	3	9	2
2	9	8	6	7	3	4	1	5

Mini Sudoku (difficult this month)

Insert the numbers 1 to 6 in the blank boxes so that each of the six separate areas of the puzzle and each line vertically and horizontally contains each number only once.

		3			
			2		
	1			6	
		4			
1			6		3
5					1

Last Month's Mini Sudoku Solution

5	4	2	3	6	1
6	3	1	4	2	5
4	6	3	5	1	2
1	2	5	6	4	3
3	1	6	2	5	4
2	5	4	1	3	6

Quick Reference List of Advertisers

Advertiser	Page
FOOD:	
Local Honey	23
Spotty Dog Farm Shop	33
Farm Fresh Local Produce	35
FUNERAL DIRECTORS ETC:	
Charles S Winchcombe & Son Ltd	39
M J Sly (Memorial Stonemasons)	43
John Stuart Funeral Services	36
D J Bewley Funeral Directors	17
TECHNICAL/PROFESSIONAL SERVICES:	
The PC Doctor (Ian Diddams)	4
Dolman Audio Visual (TV & Hi Fi repairs)	21
Spanish Tuition	23
Rudi Dalby - Power of Attorney	32
Original Pet & People Portraits by local artist	2
The Arts Society North Wiltshire	23
Lendology.cic / Wiltshire Council	42
HOUSE MAINTENANCE:	
House Cleaning (Martina)	36
Painter & Decorator (Lawrence Plumb)	4
Plasterer (T O'Rourke)	21
Adams Renovations	33
Hestia Soft Furnishings	33
Building Contractors (Gaiger Brothers)	17
KFR (used furniture and white goods)	4
Cee Cee Painting & Decorating	4
Skip Hire	21
Gray & Amor Ltd, Property Renovation	11
APT Building and Electrical Contractors	16
GARDEN SERVICES:	
Tree Surgery - Trevor Hale	37
Tree Surgery - Tom Ashpole	23
PUBS/RESTAURANTS/CAFES/B&Bs:	
The Rowdey Cow	7&41
George & Dragon	
HEALTH AND FITNESS:	
Clinical Sports & Remedial Massage	34
Active Plus for over 60s	32
The Tranquil Moment Health & Beauty	41
Wiltshire Mind	32
Theo Wildcroft Yoga Classes	36
The Sycamore Centre	41
Pilates Classes	20
Cloud Nine Therapies	20
North Wessex Therapies	10
PETS & LIVESTOCK:	
Whistley Canine Country Club	34
Dog walking / Pet care services	21
Free Cat Neutering	33
MISCELLANEOUS:	
Wiltshire Bobby Van Trust	17
Nursery - Townsend Barn	10
Canal Boat Rental - Foxhangers	34
Rowde Village Website	36
Car Sales, MOTs & Servicing	32
4Children	34
Arts Together - Ageing Creatively	37
Hair at Home Rowde	37
Logs and Kindling	4

And please remember to mention where you saw the advert when you contact any of our advertisers! Ed

Quick Reference Contacts and Village Guide

Listed below in alphabetical order are the various village organisations with contact names and telephone numbers

Allotments

Chris Stevens, Tel: 01380 738438

Bell Ringing

Contact Richard Heath
on 01380722379

Bingo

Mondays 8 pm in Village Hall

Charities

Rowdeford Charity Trust
trustees@rowdefordcharity.org.uk
www.rowdefordcharity.org.uk

Children's Art & Craft Classes

Hayley Mitchell 01225458679
hayleymitchell@thecreationstation.co.uk

Church Coordinator

Benefice Administrator:
Sarah Bowler 07876142112

Church Choir

Junior & Senior Choir Practice
Thursdays at 7.00 pm at
St Matthew's Church,
Gavin Moss 01380 729160 /
07771780016

Church Wardens

Michael Comwell Tel: 01380 722855
Gavin Moss Tel: 01380 729160

Doctor

For list of doctors contact the
Health Commission, Pans Lane,
Devizes, Tel: 0300 111 5717

Football

John Dalley, Tel: 727094

Footpaths

Ivan Whittaker-Axon 01380 728669

Garage

Slades of Devizes Tel: 727755

Hospitals

Devizes Community Hospital
Tel: 723511
Chippenham Community Hospital
Tel: 01249 447100
Trowbridge Community Hospital
Tel: 01225 711300

Ladies Club

Held in Village Hall on last Tuesday
in the month at 8 pm.
Mrs Di Buckland, Tel: 723049

Local Councils

Wiltshire Council
Tel: 0300 4560100
Devizes Town Council 722160

Neighbourhood Police Team

Jo Newbury Rural Beat Manager
PCSO Georgina Dodd
Ring 101
Google devizes npt to contact the
team on
www.wiltsmessaging.co.uk>devizes

Parish Council

Actg Chair - **Ivan Whittaker-Axon**
Tel: 01380 728669
Clerk - Mrs Rebekah Jeffries
Tel: 01380 501919

PC Repairs - 07833696328

ian@pcdoctor-devizes.co.uk

Playing Fields

For playing field bookings
please contact the Parish
Council Clerk on 01380 501919
rowdeparishcouncil@gmail.com

Police

Devizes Police Tel: 101

Pubs/Restaurants

Cross Keys, Tel: 739567
George & Dragon, Tel: 723053
Rowdey Cow Cafe, Tel: 829666

Rifle Club

Practice Wednesdays, Matches
Thursdays in Village Hall.
Laurence Plumb, Tel: 728174

Roads/Pavements

'My Wiltshire App or 03004560100

Rowde Court Studios

Ann Swan, Tel: 01380 724788

Rowde Rainbows

Meet: Tuesdays 6.15 to 7.15pm
Contact: Emma Moffat 07780756411
Email: RowdeRainbows@gmail.com

Rowde Village News

Alan Watters, Tel: 01380 724788 or
07886870053 watters.alan@gmail.com

Rowde Village Hall

Enquiries - Tel: 07926952631
Bookings - 722497 (after 6 pm)

Rowde C of E Primary Academy

High Street, Rowde SN10 2ND
Head teacher 723991

Rowdeford Special School

Head Teacher
Tel: 850309

Hft (ex Self Unlimited)

Sharon Young, Tel: 721309

Sewing Circle

Ring Yvonne on 01380 728745

St Matthew's Flower Guild

Liz Ibbetson, Tel: 720630
Flowers for all occasions,
Weddings, Funerals &
Anniversaries

TAXI

R H Reeves 725072
J Dalley 07592 063789

Toddler Group

Village Hall Thursdays 9.30-11.30

Tuesday Afternoon Club (60s+)

Held in Village Hall first Tuesday in
the month at 2.30 pm.
Mrs D Ellis, Tel: 722655

Veterinary Surgeries

Estcourt - Tel: 723687
McQueens - Tel: 728505
The Paddock - Tel: 813202

Village Fete - Lisa Wills

Enquiries - Tel: 01380 730078

Website

www.rowdevillage.org
rowdeparishcouncil@gmail.com
or contact Rebekah 01380 720988

Youth Club

Iain Marr 07540017184

Election timetable

1. Download a nomination pack at:

www.electoralcommission.org.uk/media/5016 or ring: 0333 103 1928

If you need help downloading a nomination pack, please contact the Parish Clerk, tel: 01380 501919 or by email: rowdeparishcouncil@gmail.com

2. Submit nomination form in person.

Before **Thursday 8th April 2021, 4pm**

to Wiltshire Council, Monkton Park Office, Monkton Park, Chippenham, SN15 1ER

3. Election day: Thursday 6th May 2021

Now is your chance to join Rowde's Parish Council

WHAT DO LOCAL COUNCILS DO? Your local council has overall responsibility for the wellbeing of your local community. Their work falls into three main categories: • Delivery of services; • Improve quality of life for residents; • Give communities a democratic voice.

BECOMING A LOCAL COUNCILLOR: As a local councillor you can become a voice for your community and make real change. Councillors are community leaders and represent the interests of the communities they serve.

Local councillors have three main responsibilities: • Decision-making; • Monitoring; • Getting involved locally.

GETTING ELECTED To stand for election to a local council you must be: • a UK or Commonwealth citizen • at least 18 years old; • an elector of the local council; or in the past 12 months occupied land or other premises in the area the local council serves (as owner or tenant); or work in the area your local council serves (as your principal or only place of work); or live within three miles of the local council boundary.

For more information, please contact the Parish Clerk:

rowdeparishcouncil@gmail.com

Tel: - 01380 501919

BEST KEPT VILLAGE COMPETITION – is coming to Rowde again. If you can tidy/ weed/ tame/make the space outside your home more beautiful, we may win! If you would also like to be involved in a village clean-up, please contact the Clerk on the details above.



THERE IS AN
ELECTION....

BECOME A
COUNCILLOR

FOR ROWDE PARISH
COUNCIL

Your village needs
you!

Do you want 70 new
homes in the
village?

Are you interested in
helping to design a
play park in
Silverlands for our
young people?

Would you like to
decide where your
precept money is
spent in the village?

ROWDE PARISH
COUNCIL

Rebekah Jeffries (Clerk)
rowdeparishcouncil@gmail.com
tel: 01380 501919
rowdevillage.org

Meetings: Every second
Wednesday of the month,
7.30pm

