

Rowde Village News



October/November 2020

Make a
difference in your
community

Photo Credit: drawingrooms@icloud.com

COMMUNITY
FIRST



VOLUNTEERS



NEEDED!

Your local Link Scheme needs you:

Demand for our service is growing and we
urgently need new volunteers to support
the service



If you could spare some time, or for more information
please contact us: **01380 722 241**

Email: linkproject@communityfirst.org.uk

Editorial

Welcome to this edition of the Rowde Village News. Well here we are two months on from the last issue and we are still fighting this terrible virus so I do hope you are all well and keeping safe. On this note I must say that the NHS urgently need you to donate blood and plasma and you can find out how to do this on page 22.

Firstly though I'd like to welcome Sue and Richard Scrusse to the magazine team. They have kindly volunteered to be distribution managers so please see their contact details at the bottom of this page if you have any problems with receiving your mag. Unfortunately most of the local clubs and societies are still not able to operate as before but some are now continuing in a modified form either physically or electronically so we will endeavour to keep you all informed of the changes.

Both our schools are open again and we have very good reports from both of them on pages 12 and 13. There's some very interesting old Rowde photos to view on pages 7, 42 and 45 so have a look and do get in touch if you know any more about them or if you have any old photos to send in yourselves.

In the way of stories from local people we have a great account of pilot Bill Higgs' involvement in WW2 on pages 8 and 9 and our featured short story this time is the heart wrenching story of Rowde car dealer Mark Calaz written by himself to raise awareness and support for Brain Tumour Research. You will find it on pages 36 and 37. Please, please read it and help the cause if you can!

There's also a great deal to read about in the local news section (pages 26 to 32) and in the letters pages (pages 45 & 46).

Mind how you go, stay safe, Ed

This magazine is brought to you thanks to Jam Print Design & Printing and all the advertisers

Notice to contributors & advertisers

This magazine is generally printed in black and white in hard copy and delivered free to every home in the parish but additionally it is hosted on the **Village website** in full colour. If anyone does not wish any particular details (photographs, names, contact details, etc) to appear on the World Wide Web then they are advised not include them in their submissions, thank you.

Contributors please also note:

The deadline for articles and any changes to advertisements is the 15th of every second month.

Inserts: Due to the extra work created by inserting leaflets into the magazine and the fact that the team is already stretched, we very much regret we are unable to accept requests of this nature except in very special circumstances, when there will be a small charge.

Views expressed in this magazine are those of its contributors. They do not necessarily represent the views of the magazine's editorial team.

Contents

August/September 2020

Rowde all about it (page 4)	<i>News and views from village organisations</i>
Rowdey Cow News (page 5)	
News from Hft (page 6)	
Rowde Memories (pages 7 & 42)	
Bill Higgs & WW2 (page 8 & 9)	
Rowde Book Club (page 9)	
Lockdown Humour (pages 11 & 51)	
Rowdeford School (page 12)	
Rowde Primary Academy (page 13)	
Rowde Parish Council (pages 14 to 16)	
Fun Column & Photo Fun (page 17)	
The St Matthew's Pages (pages 18 & 19)	<i>inc. Church Rotas and details of Services and Events</i>
Children's Colouring Competition (pages 21 & 22)	
Bus Times (page 24)	
Local News (pages 26 to 32)	
Short Story (pages 36 & 37)	
Letters (pages 44 & 45)	
FREE Classified Ads (page 47)	
Sudoku (page 47)	
Quick Reference List of Advertisers (page 48)	
Quick Reference Contacts and Village Guide (page 49)	
Village Diary (page 50)	
Children's Colouring Competition Winner (page 51)	

The Magazine Team

Alan Watters (Editor)

Tel: 01380 724788

Email: watters.alan@gmail.com

Suzan Jackett (Assistant Editor)

Tel: 01380 729791

Email: suzijj@rocketmail.com

Julie Baker (Advertising Manager)

Tel: 07796690413

Email: juliebaker72@yahoo.co.uk

Sue & Richard Scrusse (Distribution Managers)

Tel: 01380 729488

Email: scrusefamily@aol.com

Front Cover Image

On the front cover of this issue is a wonderful photograph of a swan on the canal taken by Penny Birch.

Thanks Penny, its a cracking good shot!

ROWDE VILLAGE HALL

HISTORY OF THE VILLAGE HALL

In 1887 the land and buildings were conveyed to three named persons as Trustees to hold as Designated land or Specie land and held as a permanent endowment for the USE of the inhabitants for ever.

1976 sees the then existing trustees retire and a new scheme is set up by the Charity Commission, vesting the Land and Buildings specified in the schedule to the Official Custodian for Charities, and held in trust for the Charity, as "ROWDE VILLAGE HALL".

The new Management Committee to consist of Eight Elected Members and Ten Representative Members from User Groups, to administer and maintain the property for the above named Charity.

On Tuesday 3rd. March 2020 the AGM for the above Charity was held with a request for names of those interested on serving on the Hall Management Committee.

No names were put forward leaving the old committee of 5 to continue.

As mentioned above we urgently require more younger people to help with running the Hall especially now with the Covid 19 virus as all the Committee members are over 70 and are vulnerable to the virus and are advised to keep shielding.

We hope we can encourage you to come forward and become a Committee member. Please contact me on 722186 or call to hear more about the Hall at Andrew's View, Marsh Lane.

The Hall and the cooker have been professionally Deep Cleaner but there will be no access to the back room or kitchen area when the Hall does reopen, which will probably be in the New Year.

The committee have completed a Covid Risk Assessment and Sanitisers, paper towels etc. will be provided.

To comply with Government ruling (which are changing frequently) Hirers will be responsible for completing their own Risk Assessment form before their booking, to comply with Social Distancing and to keep records to allow Tracking and Tracing, and to ensure all floors are swept and surfaces, furniture, toilets, taps, switches etc. are wiped down before and after their booking is complete.

On a happier note we are pleased that our 'grass cutter' Rob is back in action after his recent back injury but would like to again thank James Collett for keeping the grass cut in Rob's absence.

Barrie Barrett, Chairman 722186

The Board Room
Renelec House
46, New Park St,
Devizes
SN10 1DS
sycamorecentre.devizes@yahoo.co.uk
www.careconfidential.com/devizes


The SYCAMORE Centre
07762 382913
A Pregnancy Choices Centre

ROWDE LADIES CLUB

The Club will start again as soon as possible.

Di. Buckland, Secretary 01380723049

ROWDE TUESDAY AFTERNOON CLUB

The Club will start again as soon as possible.

Daphne Ellis, Secretary/Treasurer 722655

HIWAY CLUB

(for the hearing impaired)

The Club will start again as soon as possible.

Di Buckland (Secretary) 723049

MONDAY CLUB NEWS

Bromham and Rowde Day Centre for Older People

We will be staying in touch with all our members and helpers whilst we are closed with a newsletter, which should arrive on your doormat every week. I look forward to us meeting up again. If any Monday Club members would like any help whilst we are closed, do please let me know.

For more information please contact :

Caroline Culley, 07557 983940 / 01380 850531
carolineculley1@outlook.com

The Monday Club is a community day centre and lunch club for older residents of Bromham and Rowde. It is grant aided through Wiltshire Council.

J F Chimney Sweep

Devizes

Member of

'Institute of Chimney Sweeps'

Clean, Reliable and Professional service
Insurance certificate supplied with each sweep

Standard Sweep £40

Enquiries call James on **07849 423883**

Email: jfchimneysweep@outlook.com

Website: jfchimneysweep.co.uk

LAURENCE PLUMB

Interior & exterior Painting/
Decorating

Free Estimates

Tel: 01380 728174

ROWDEY COW NEWS



After being closed for a lot of this year, we have enjoyed a very busy Summer and the changes we made to operate safely in this difficult time of Covid have worked well. However, as I am writing this we are awaiting more announcements later today to find out what will happen as we approach Autumn.

This weekend coming we are planning to have some mini, Covid-safe celebrations as the first launch party for the Spotty Dog Farm Shop opening was not able to go ahead back in March, as it was the weekend of lockdown - we are keeping our fingers crossed that it can go ahead this time. We will have some roundabouts for our younger customers to enjoy and some promotions and prize draws and meet the donkey sessions, an Ozzy themed bbq as well as a visit from our local councillor, Laura Mayes.



Our neighbours at The Spotty Dog Farm Shop were thrown in the deep end at a very difficult time when they opened in March and all their plans immediately changed. They adapted by offering the local community a fantastic food delivery service and safe zone for food collections, meanwhile we closed the café. Now they have opened their doors properly and are welcoming families and customers into their shop and are back to a little bit of normality while following the standard Covid guidelines. The café is also open again and we too have found a new, safe way to serve our customers with our outdoor food and drinks hatch. While we are both currently able to operate we decided to have the mini celebrations 26th -28th September (subject to any changes before this date) and to thank our customers for supporting us through this difficult year.

Throughout the Summer we offered takeaway style food in our garden served in biodegradable boxes which could either be enjoyed on the premises or taken home. We also now have added seating back inside the café and also in the building which was built earlier this year in the garden. It was originally going to be an undercover play area but now is used for extra undercover seating.

We have expanded our menu slightly too and are serving full English breakfasts on plates with proper cutlery from 9-11.30am. We also have been cooking our wonderful Sunday Roasts for the last few weeks but this is currently by booking only whilst continuing with the takeaway style menu for customers who can just turn up.



We will try and adopt the outside system for as long as possible but as the weather gets colder, depending on government guidelines and safety measures, we will start to move from the outdoor queuing system to indoor table service.

During the Summer holidays we took part in the Government's Help Out to Eat Out Scheme which made us very busy on those days and we had a record breaking day for food and ice cream sales on Bank Holiday Monday. This will help us to recover from having been closed throughout the Spring & Easter period but we are still tentatively waiting to see what the Winter holds. Our main priority is to keep our customers and staff safe throughout so any decisions we make will be based on this.

We will continue to have to make changes to our systems and menus at short notice to keep within safety and government guidelines so please refer to our facebook page and website or give us a call and speak to us at the café to keep up to date with current operating processes, menus and opening hours etc. Thank you to everyone for your continuing support.

Stay Safe, Sue



NEWS FROM Hft

Hft support during the Covid-19 (Coronavirus) pandemic

The Covid-19 virus is having a deep impact across the UK and the rest of the world. As a charity that provides vital support services for some of the most vulnerable adults in our society, we would like to reassure everyone that our staff teams are working hard to continue to provide a consistent level of services, in line with official guidance issued by government and the Care Quality Commission (CQC).

These are unprecedented circumstances. We are mindful of the need to be agile and responsive so that we can protect the safety of both our staff, and the people we support – many of whom not only rely on the services we provide but also find themselves among the group who are most at risk.

Hft has a dedicated Pandemic Response Committee who meet virtually regularly to work through the latest advice from the government, keep staff updated and to secure the health and wellbeing of both our colleagues and the vulnerable adults in our care.

We are doing all we can to ensure the people we support and their families are given the vital support they need.

Supporting Hft

There are many ways you can support people with learning disabilities through this challenging time. If you would like to support your local Hft service, please contact the regional office to find out how you might be able to help out. HftWiltshire@hft.org.uk 01380 725455.

What's next?

Over the coming weeks and months we may need to explore new ways of working, such as supporting people who would normally attend our day services in their own homes, or working flexibly with other organisations to pool resources. In such situations, we will do so innovatively and with the creative, solutions-focused approach for which we are known.

Please be assured that Hft staff will be working to continue to deliver the same excellent levels of care that we would under normal circumstances.

For further information go to www.hft.org.uk/about-us/covid-19/



Become a support worker and change someone's life

We have vacancies in Rowde, near Devizes, Wiltshire.

You don't need experience of support work or any special qualifications for this job as we will provide all the training you need. What matters most is a **positive attitude** and a real desire to support people with learning disabilities to **live the best life possible**.

Full and Part Time Support Worker

£8.55 to £8.85 per hour (on passing probation)

Annual Leave and other benefits apply

Waking Night Support Worker £9.55 to £9.85 per hour

Relief Support Worker £8.55 per hour
plus 12.07% Holiday Uplift = £9.58 per hour

To find out more, call **01380 721309** or e-mail hftwiltshire@hft.org.uk. Alternatively, you can apply online at hft.org.uk/jobs



ROWDE MEMORIES



Anyone know what this Rowde occasion was? Sometime in the 1920s I think. **David White**



The P.C. Doctor
(Rowde/Devizes)
07833 69 6328
ian@pcdoctor-devizes.co.uk



KFR | refurbishing furniture
reviving communities

Kennet Furniture Refurbiz
The Furniture and White goods charity.
To donate items or purchase please call:
01380 720722 / 720200
Unit 6B, Hopton Industrial Estate,
Devizes, SN10 2EU.

GRAY & AMOR LTD.
CARPENTRY & PROPERTY RENOVATION
Covering all aspects of property
renovation and maintenance
View our range of services online
or call to discuss your project
www.grayandamor.co.uk
CALL (01380) 587006

Bill Higgs and World War 2

In 1989 I was commissioned by the 'Wiltshire Times' to interview and write the story of several servicemen who had fought in World War 2. One of these men was the late Bill Higgs (Glider Pilot) who flew a Glider into battle at Arnhem 1944. This is only a condensed part of his story, as it is too long to go into detail. Bill came from Trowbridge and after talking to him I had nothing but admiration for his bravery. Before Arnhem he had flown a Glider to 'Pegasus Bridge' and took part in the battle there.

IN REMEMBRANCE TO ALL SERVICEMEN 2020 ARNHEM 1944

Keevil airfield in Wiltshire bustled with activity as we prepared for Arnhem-Operation Market Garden was on.

Around 50 or 60 glider combinations (Stirling aircraft towing Horsa Gliders) took off from Keevil on September 17th and 18th 1944, bound for Arnhem.

We had an excellent channel crossing, but once we were over the land the Germans threw some flak at us. We made a good landing on a potato field, and I landed the glider as close to a wood as possible to avoid detection.

Light machine gun fire came at us as we disembarked with our jeeps and mortars, then we ran like hell into the woods.

I looked back at the glider and saw that one of the crew was hanging limp out of it. He had been hit by the machine gun fire. Without thinking I ran back through the fire and picked him up and carried him to the shelter of the woods.

He didn't seem to, be seriously wounded. He was lifted on to a jeep which contained a stretcher and taken away. That was the last I saw of him. An officer reported the incident and I was mentioned in dispatches for my action.

After a while we moved off from the area where we had landed, passing through Wolfheze and Oosterbeeck until we reached a railway line which we crossed.

We were involved in some action here with the Germans, nothing much, just a skirmish. We then took a route along the river, which was on the Lower Rhine, and eventually arrived in Arnhem. From our position on the road we could see Arnhem Bridge about a mile away. When suddenly all hell let loose and we were pinned down.

Heavy fire from the Germans had stopped us in our tracks and we began to withdraw.

(after a fighting withdrawal, in which Bill was shot through the lung, he was captured by the Germans while lying wounded in a barn)

A German ambulance came up. They threw me in, then myself and the other captured soldiers

were driven miles across cobblestone roads, which in my condition, was not good at all.

At Appledoom we were put into an annexe to Princess Elizabeth Hospital and given a medical examination by the Germans. Afterwards I was taken into the main building and looked after by nuns who were very kind.

A Colonel who was in the hospital with us managed to hide in a cupboard and get away- he took a panel out of a room and hid behind it, making his escape when we all moved off to the POW camp. He did in fact make it back to England-a Dutch girl had hidden him in an underground dugout on a farm.

After the hospital we were put on a cattle train and hauled through Germany, passing through the town of Hamm and the Ruhr. We eventually stopped in Hamburg which, to my amazement, was bombed almost flat. They put us in a hospital which was actually still standing. Not long after we had settled down there was an air raid; the Germans locked us in and made a run for it, leaving us there to survive on our own.

We were taken to the town of Fallingbommel, and brought up from the station in heaps on horse and cart, into the prison camps, Stalag 11B. The Germans had just evicted some Russians to make room for us. The rooms were in a hell of a mess after the Russians had been there, so we had a lot of cleaning to do.

After Christmas 1944 they sent me down to the main camp and put me in charge as a barrack room commander. I was allowed to go from compound to compound so I was involved in a number of things like running concert parties.

There was a padre in the camp who went by the name of Gedge. He was allowed to go to camps which were better off than us, having Red Cross parcels-we only had black bread and three spuds each.

Life in the camp was terrible, food was disgusting. We all became lousy as it was running with lice, there was so much filth about. The food was very basic, a piece of black bread and three spuds cooked in their jackets which we lined up for in the freezing snow.

As the allies advanced into Germany, the guards disappeared from the camp one night, taking with them all their soldiers who could fight and leaving behind as guards all those Germans who were injured or who had frost bite after serving on the Russian front.

We easily disarmed them and took over the camp. We then got some chalk and wrote on the barrack's roof 'British POWs' because the allies were using Typhoons (rocket carrying aircraft) to shoot up everything they saw.

Bill Higgs and World War 2 (cont'd)

There was an SS barracks in Fallingbommel; when the Cherry Pickers (11th Hussars) came up the Germans were shooting at them, we in the camp were shouting and pointing out where the enemy was positioned.

After we were liberated by the 11th Hussars, the Second Army came up and took over the camp; 20 of us volunteered to stay in the camp and were issued with pick helves to police the area and keep the prisoners in until the Second Army was ready to administrate us. I was put in charge of those twenty men, they were a tough bunch.

Just before it was my time to go home we were taken by lorry to see Belsen Concentration Camp and view the horrors which had taken place. They were still clearing up the bodies.

After being deloused with DDT we were taken to an airfield and flown by Dakotas to England, where on landing we could see a banner saying, 'Welcome POWs'. As we stepped from the plane WAAFs came out and took us by the arms and

helped carrying the bags-a lot of the wounded just couldn't carry them.

We were then given 40 days leave, which was a blessing. In all I had spent 10 months in Stalag 11B prison camp and it was good to be out.

When my leave was finished I had to report to Midhurst Sanatorium where I stayed for two years. I was operated on by Sir Price Thomas who was at that time the physician to King George V1. He was an expert on lung aneurism. I was finally demobbed in 1947 as being disabled.

On September 17th each year a lone figure could be seen at Keevil Airfield, for in the years gone by the Late Bill Higgs, whose injuries left him with only one lung, was often seen walking the length of the runway in the memory of his dead comrades, memories that stayed with Bill until the end of his life.

Harry Angier, Rowde

ROWDE BOOK CLUB

Due to Coronavirus, meetings are continuing via the Zoom facility online, the date of the next 'physical' meeting will be notified to members when it is known. **Contact Ann on 01380 724788 for further info.**

BOOK REVIEWS

'A Gentleman in Moscow'

by Amor Towles

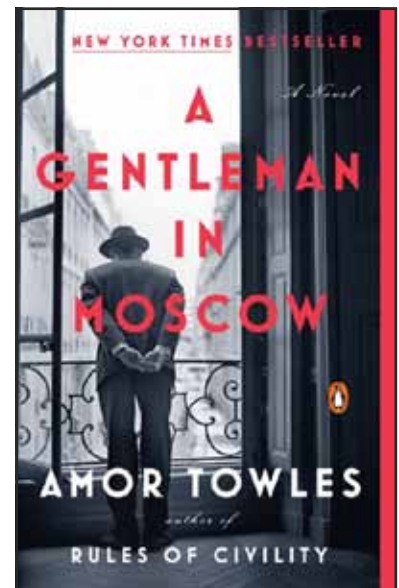
The book this month was A Gentleman in Moscow a novel by Amor Towles. Not all of us had finished the book but most were enjoying it, but some found it sad and a bit depressing but others found it amusing.

Alexander Rostov, a Russian aristocrat in his early 30s, is sentenced to life imprisonment in Moscow's Metropol Hotel following the Russian revolution. The Count says you have to master your circumstances and he does just that. He is interested in all that goes on in the hotel and all the visitors who pass through. He is an observer frozen in time, watching changes come and go. He survives because he seems to turn his hand to everything with ease. The Count watches the tumultuous events of the 20th century unfold through his attic window.

Sophia the daughter of Nina who worked as the seamstress in the Metropol Hotel. Nina was left in the care of the Count when her mother left to search for her husband, who had been taken by the regime. Another character is Anna a film actress who becomes the Count's lover. These main characters are really brought to life by Towles and by the end of the book you really feel you know them well, along with many others characters in the book.

There is romance, politics, espionage, parenthood and poetry in this historical novel. I thoroughly enjoyed this book and found it very atmospheric and was there in the Metropol Hotel with its faded grandeur all the way

Jill Myerscough





Heather Smith
North Wessex Therapies

Change and Wellbeing Therapy

cognitive behavioural therapy - hynotherapy - relaxation -
mindfulness - stress management

Face to face appointments now available at The Therapy Rooms, 32
New Rd, Chippenham and in Bromham

anxiety - stress - phobias - chronic pain - habits - poor sleep
life goals: career - personal life - sports

Call for a chat or email

t: 07702 113544

e: heather@northwessextherapies.com

w: www.northwessextherapies.com



TOWNSEND BARN NURSERY POULSHOT



For pre-school children age 0-5 years
Open all year from 8am - 6pm

The Nursery makes full use of its rural setting, and focuses on outdoor play as well as indoor activities. Home cooked food provided.

Children's gardens & greenhouse | Vegetable plot
Tennis court | Nature garden | Outdoor wood oven
Swimming with Parents | Sandpit | Outings & Trips

For further details please contact:

01380 828141 / 07976 899946

www.townsendbarnnursery.co.uk

TIME FOR CARERS APPEAL

Carer Support Wiltshire, the charity that supports unpaid carers in Wiltshire, has launched a 'Time for Carers Appeal' to raise money that will allow carers to take a break.

Carers often struggle to find time for themselves; for hobbies and to socialise with others. They may not be able to leave the person they look after on their own at home, or they feel guilty taking time to enjoy themselves. Many have been hit hard by the coronavirus pandemic as the closure of day centres and other groups have meant they are caring more than ever, in more difficult circumstances with little or no support.



Research shows that 40% of carers haven't taken a day off from their caring role in over a year. Yet taking regular breaks has been shown to be the most effective way to reduce feelings of loneliness and isolation and promote good mental health.

Previous appeals have enabled all sorts of breaks, by providing cinema memberships, climbing sessions, spa days and counselling sessions. It has also been used to pay for respite care.

Carer Support Wiltshire are looking for individuals, businesses and local groups to help to raise funds for the appeal or to donate. More information can be found at carersupportwiltshire.co.uk/timeforcarers.

Direct Line: 01380 819606 Email: kathb@carersupportwiltshire.co.uk

We are here for you.

Twitter @CarersWiltshire
Facebook/CarersWiltshire
Call us free on 0800 181 4118



Join our **Virtual Carer Cafes** - check facebook or our website for dates and times.

Register for our **Talk and Support** service by calling us FREE on **0800 181 4118** (Mon - Thurs 9:30-4:30, Friday 9:30-4:00).

Go to our website www.carersupportwiltshire.co.uk to find more information, advice and resources.

LOCKDOWN HUMOUR



'I'm not going to be caught out again by lockdown. I'm moving in with my hairdresser'



"Grandpa, give me a pound and I will tell you who slept with grandma while you were in quarantine..."
"Here, I'll give you five pounds, who was it?"
"Me!"

NEWS FROM ROWDEFORD SCHOOL

Co-operation Responsibility Happiness Resilience Respect Caring

Our school value this term is Co-operation, which has been apparent in the really positive start to the term as children (and staff) learn the names of our new students and start to build positive relationships. Children have been working in their class bubbles and making the most of the good weather, as we all get used to the Covid safe measures that have been put in place.

Willow Class have been learning about 'Rainbows' since returning to school. We have been weaving both in the classroom and outside. We have also really loved exploring our school grounds again, we love the climbing trees!



Rowan class have been out in the grounds and looking after the chickens.



Well done to one of our students, Hannah who completed a challenge of walking over 90k during June and raised a huge amount of £540!



Teresa Ollerhead

NEWS FROM ROWDE PRIMARY ACADEMY

Our bright start leads to their bright future

We are all very excited to be back at school and the buzz of learning and laughter of friendships are felt and heard throughout. There might be new concepts such as “bubbles” or one way systems and everyone is washing and sanitising as though this has always happened, but I think everyone from staff to children to parents all agree that school is the right place to be.

Rowde would like to welcome some new staff members; Alice Simpson is the Y5 teacher and Helen Alford is in Y2. New staff members bring different ideas and approaches which complement the practices already in place. Finally, we would like to welcome Janice Maund and Laura Allum to the office where no two days are the same. We hope you all feel like part of our Rowde family.

There is a new sign at the main school gate. Not only does this welcome Mr Edy-Berry as our permanent head but there is a new vision statement of Learn, Grow, Love. We are developing our Christian Values, chosen carefully with the support of the current Y6 children and staff to best represent Rowde



CofE Primary Academy. These are Respect, Optimism, Wisdom, Determination, Enthusiasm and Love, Love underpins everything we do at Rowde. Our worships are based around these values and children choose a class member who best represents the value of the week. There are exciting times ahead.

Finally, I would like to welcome my new reception children to Birch class. As most of you will know my passion is within the early years and I love seeing the new children walk through the doors and being involved in laying the foundations for their future learning and love of school. As always, your children are a credit to you all. They have come in with independence and super listening skills as well as a have a go approach. It is only three weeks in but we have already been learning and doing so much. The children really enjoy being out and about looking for signs of Autumn and change. It is on these walks around the school grounds that you really do appreciate how lucky we are to have these facilities to enjoy. As I meet the current year 6 who I remember as they too walked through my doors, they remind me that they are nearly taller than me, it seems as though this has become the



yearly ambition of so many but as I keep reminding them, being taller than Mrs Bq is not hard to beat.

I hope everyone is keeping well and we look forward to a time when being out in the community is allowed once again. Take care

Mrs Bq

You can now follow us on twitter at Rowde C of E Primary @RowdeSchool or on Facebook

Your Parish Council

Please visit the rowdevillage.org website; the Rowde Parish Council Facebook page and the village noticeboards for confirmation of forthcoming Parish Council meetings.

Parish Council meetings will be held on zoom for the foreseeable future. Please contact the Parish Clerk for a zoom login in advance of the meeting if you would like to attend.

A full set of minutes is available on the village website. If you would like to receive a hard copy of the minutes, please contact the Parish Clerk.

CORONAVIRUS

Wiltshire Council update during the Coronavirus

At the time of the Parish Council meeting on 9th September 2020, Wiltshire Council had moved from the 'response' phase to the 'recovery' phase of the pandemic. There is a Recovery Co-ordinating Group which is following four key themes. Recovery is defined as the process of rebuilding, restoring and rehabilitating the community, the public health, the economy and relevant infrastructure following the COVID-19 incident.

Wiltshire Council has granted £94 million in grants to 8000 business. 267 business have closed since the Covid crisis. More people are claiming Universal Credit. There has been an increase of 4.2% and it is anticipated that this number will increase.

Wiltshire Council would like to build on the community strength show during the outbreak. Rowde was commended for the community work that it did during the lockdown period.

PPE supplies in care homes in reported were reported as being good at the time of the meeting.

Parish Council Meetings – during Coronavirus

The Parish Council did not meet in August. The Parish Council met on 9th September 2020 by zoom.

The key areas discussed at that meeting were:

Parish Councillors

We say thank you John Hawkins, for Chairing the Parish Council for the past couple of years. I Whittaker-Axon has now been elected as Chair. L Wills was elected as Vice-Chair.

We say welcome to Pat Bryant, Wayne Cherry, Debra Pullen & Dave Revell as new Parish Councillors.

We have only two vacancies on the Parish Council now. If are you interested in local matters and you have a spare a couple of hours a month and would like to join us, please contact the Clerk, at rowdeparishcouncil@gmail.com or tel: 01380 501919.

Rowde Water Recycling Centre, The Common

Wessex Water is planning to upgrade the Rowde Water Recycling Centre with a £3 million pound project. Wessex Water will submit a full planning application to Wiltshire Council in due course. If the plans are approved, it is proposed that the work will begin in January 2021 and will take approximately 12 months to complete.

A question was asked about whether the current scrubland would be retained. The answer was yes and that there are plans to plant further trees in that area.

Planning Matters

National Planning Policy Consultations

There are two national planning policy consultations which are now live. The first consultation is on short-term change to planning policy, deadline date 1st October 2020. Changes proposed include lifting the threshold for building affordable houses from 10 – 40/50 dwellings.

The second consultation is on fundamental changes to the planning system, deadline date 29th October 2020. These changes may have an effect on Rowde. P Bryant & J Hawkins will investigate this further.

Planning Applications

20/05178/FUL: 2 Manor Farm, Manor Farm Lane, High Street, Rowde, Wiltshire, SN10 2ND. Proposed balcony to rear of house and erection of garage. Confirmation of Parish Council's response – no objections.

20/05857/FUL Rowde Hill Farm. Proposed erection of a replacement agricultural building. Confirmation of Parish Council's response – no objections

The Common

- SSE has requested permission to replace three telegraph poles on the Common. The Parish Council consents to this work taking place.
- Travellers are sited on the Common (across from Berhills Lane) on Wiltshire Council land. The situation is being monitored by local residents.
- Land Maintenance: thank you to L Tovey & F Drake for cutting the grass on the Common. It is due to be baled soon. Residents have been out removing ragwort as it appears. It is reported that there is a problem with water hemlock.

Highways

- A request has been made by a resident to Wiltshire Council to propose that a steel barrier is installed on the corner at Close Lane, off the High Street. The Parish Council supports this application and will raise the matter with the Community Area Transport Group (CATG).
- It was noted that there is a drainage problem at the High Street/Close Lane junction. The water is not flowing properly under the bridge. The Clerk will report this problem to Wiltshire Council and Wessex Water.
- The Clerk will chase the contractor regarding the weed killing programme. When the programme has finished, it was agreed that the Parish Council will hire a road sweeper to come through the village.
- Wiltshire Council is considering a wildflower area in front of the houses in Reed Place.
- A query was raised about the ditch at the back of houses in Silverlands and whether it would be possible for residents to plant wildflowers in them. The Clerk will ask Wiltshire Council.
- A report was submitted to the Parish Council from the Community Speedwatch Team. They did not report any speeding tractors through the village during the times that they were on duty
- The Clerk has been asked to purchase 40mph warning stickers and 50mph warning stickers.
- A 20mph speed limit was discussed again for

Springfield Road. The Clerk noted that the Parish Council has recently requested this at the Community Area Transport Group and the application had been refused.

Footpaths

MP Danny Kruger did a footpath walk in Rowde in late August. It has been reported to the Parish Council that there are some footpaths that need attention around the village.

- ROWD24 – stile is missing (reported to Wiltshire Council)
- ROWD11 – side of bridge has fallen away (reported to Wiltshire Council)
- Permissive footpath opposite entrance to the Rowdey Cow – damage to side of first bridge (D Revell to investigate)
- Two stiles damaged: bridleway & Lower Foxhangers (reported to Wiltshire Council)
- ROWD6 & ROWD2 – navigation unclear due to crops and overgrown vegetation

Allotments

- Bonfires had been permitted on the allotments due to an outbreak of blight [the ban will be re-imposed from 1st October 2020 onwards]
- The Parish Council are looking at ways to compost green waste.

Playing Field Update

- Residents have reported late night activity on the playing field to the Community Police. The Police have said that they will increase patrols in the area.
- The Scooter Club has requested to use the large playing field for their annual event next year from 30th July – 1st August 2021. The event was cancelled this year due to Covid-19. The Parish Council agreed to the request with the same conditions as for the current year.

Finance

Monthly invoices for June, July & August were as follows:

June invoices (total: £2, 388.10)

- Admin costs: £1, 271.92
- Grounds maintenance: 740.58
- Defibrillator repairs: £375.60

July invoices (total: £2,127.17)

- Admin costs: £1, 523.67
- Grounds maintenance: £603.50

August invoices (total: £2,048.98)

- Admin costs: £1,236.92
- Grounds maintenance: £812.06

The report on the Annual Return for 2019-20 has been returned by the external auditor. No matters were raised.

A Community Infrastructure Levy (C.I.L) has been received for £5, 297.72 from the Malthouse Farm development.

Parish Council income for July & August 2020

27/07/2020	Allotment rent	£16.50
09/07/2020	Interest	£0.29
31/07/2020	Interest	£0.89
13/07/2020	CIL payment - Malthouse Farm	£5,297.72
14/08/2020	Shed Rental	£10.00
10/08/2020	Interest	£0.25

31/08/2020 Interest £0.80

Total £5326.45

Neighbourliness

- Please can we remind everyone to park with respect for your neighbours and residents who live in the village. Everyone should be able to easily access their own drives or houses.
- Please be aware of any hedgerow/bushes/trees that may hang over your property and cause obstructions and dangers for pedestrians and drivers.
- There is no such thing as the 'dog poo fairy'. Please keep our streets and grassed areas clean for everyone to enjoy. Please do not use our playing fields, to exercise your dogs and leave their waste behind.

My Wiltshire App

- Please note that Wiltshire Council is updating its website. Changes have been made to the 'My Wiltshire App'. If you have an existing account, please click on 'forgotten password' when you try to login for a new password link to access your account.
- Please forward requests for highway repairs to the Clerk or report them through the 'My Wiltshire App'. The more reports that are logged through the App, the higher the priority will be given to the issue.
- It is easy to report problems like potholes, dog mess, graffiti, litter and street lighting in your area using the 'My Wiltshire' online form. Reports can be made anonymously or you can register for free. Once you have registered, you can track the reports you have made, and receive notification once the work has been completed. The more residents report issues, the more likely we are to have them fixed.
- The 'My Wiltshire' page can be accessed through the Wiltshire Council website at:
<http://www.wiltshire.gov.uk/parkingtransportandstreets/roadshighwaysstreetcare/mywiltshireregister.htm>

Concerns

If you have any local concerns about footpaths, hedges, allotments, play facilities, or anything village related, we would like to hear from you. We value your input and suggestions and will try to help.

You can contact us through the Rowde Parish Council Facebook page, or by e-mail: rowdeparishcouncil@gmail.com, or by telephone: 01380 501919.

Police Matters

If you need to report a crime:

- Please dial 101 to report a crime and 999 in an emergency.

It is possible to follow the Police on:

- Twitter <https://twitter.com/wiltshirepolice>
- Facebook <https://www.facebook.com/wiltshirepolice/>

Or sign up to Community Messaging <https://www.wiltsmessaging.co.uk/>

Dates for the diary

Parish Council meetings dates can be found in the village diary at the back of the magazine.

We invite all villagers to attend, to observe and to make use of the public question time at the next Parish Council meeting.

A full set of minutes is available on the Parish notice boards and on the village website.

ROWDE PARISH COUNCIL

Ivan Whittaker-Axon	Acting Chair, Roads & transport	rpc.iwhittakeraxon@gmail.com	01380 728669
Lisa Wills	Vice-Chair; Allotments; Social Media	rpc.lisa.youth@gmail.com	01380 730078
Pat Bryant	Footpaths & Bridleways	patabryant@live.co.uk	
Wayne Cherry	Village Appearance	rpc.wcherry@gmail.com	
John Hawkins	Finance, Planning	rpc.jhawkins@gmail.com	07929 424781
John Dalley	Sports & Playing Fields	jdtaxisdevizes@gmail.com	07592 063789
Chris Stevens		rpc.cstevens010@gmail.com	01380 738438
Debra Pullen		rpc.dpullen@gmail.com	
Dave Revell	Playground Safety	rpc.daverevell@gmail.com	07734 422703
VACANCY			
VACANCY			
Rebekah Jeffries	Clerk	rowdeparishcouncil@gmail.com	01380 501919

Wiltshire County Councillor deputising for Rowde

Anna Cuthbert	Wiltshire Councillor	Anna.cuthbert@wiltshire.gov.uk	
---------------	----------------------	--------------------------------	--

WILTSHIRE COUNCIL

Useful phone numbers

Libraries:	01225 713000	or mobile/outside Wiltshire:	01225 777234
Parking:	01380 734812	School admissions:	01225 713010
Pest control:	01380 734721	School special educational needs:	01225 718095
Planning:	01380 734812	School transport:	01225 713004
Recycling boxes - Hills Waste:	0845 6032085	Social care – adults:	0300 456 0111
Registration – Births, Deaths & Marriages:	01225 713007	Social care – children:	01225 773500
Roads & pavements (Clarence) Freephone:	0800 232323	Street care and cleaning:	01380 734849

QUICK QUIZ - TRUE OR FALSE?

1. Prince Harry is taller than Prince William
 2. The star sign Aquarius is represented by a tiger
 3. Meryl Streep has won two Academy Awards
 4. Marrakesh is the capital of Morocco
 5. Idina Menzel sings 'let it go' 20 times in 'Let It Go' from Frozen
 6. Waterloo has the greatest number of tube platforms in London
 7. M&M stands for Mars and Moordale
 8. Gin is typically included in a Long Island Iced Tea
 9. The unicorn is the national animal of Scotland
 10. There are two parts of the body that can't heal themselves
 11. Howard Donald is the oldest member of Take That
 12. The Great Wall of China is longer than the distance between London and Beijing
 13. There are 219 episodes of Friends
 14. 'A' is the most common letter used in the English language
 15. A lion's roar can be heard up to eight kilometres away
- (Answers on page 54)*

Green Man Gardening

Pruning planting
weeding mowing



12 years gardening experience

Retired Police Officer

I will adhere to social distancing and hand hygiene

Please contact Dave Clarke

M 07876 557586 H 01380 725227

FUN COLUMN

Welcome to this month's fun column, featuring classic jokes & quotes by Peter Kay:



A jump lead walks into a bar. The barman says "Don't start anything!"

A sandwich walks into a bar. The barman says, "Sorry we don't serve food in here."

I think animal testing is a terrible idea - they get all nervous and give the wrong answers.

I was doing some decorating, so I got out my step-ladder. I don't get on with my real ladder.

A cement mixer collided with a prison van on the Kingston Bypass. Motorists are asked to be on the lookout for 16 hardened criminals.

So this bloke says to me, "Can I come in your house and talk about your carpets?" I thought, "That's all I need - a Je-hoover's witness."

A mate of mine who works on the dodgems has just been sacked but he's appealing against funfair dismissal!

Sex is like playing Bridge - if you don't have a good partner, you better have a good hand.

I went to a restaurant that serves 'breakfast at any time'. So I ordered French Toast during the Renaissance.

If quizzes are quizzical, what are tests?

Knowledge is knowing a tomato is a fruit. Wisdom is not putting it in a fruit salad.

My dad used to say, 'Always fight fire with fire', which is probably why he got thrown out of the fire brigade.

A friend of mine got knocked down by a mobile library. He was lying in the road screaming and the driver got out and said, "Shhh!"

Why does mineral water that 'has trickled through mountains for centuries' have a 'use by' date?

A woman says to her husband: "You never take me anywhere expensive anymore." He says "get your coat on." She says "where we going?" He says: "The petrol station."

Why is it that when someone tells you that there are over a billion stars in the universe, you believe them, but if they tell you there is wet paint somewhere, you have to touch it to make sure?

Do you have a funny story to tell? Send it in!

PHOTO FUN

This issue we feature some amusing pet photos.



Do you have any interesting or amusing photos of people, pets or anything else? Send them in!

Worship in Rowde, Bromham and Sandy Lane October/November 2020



Opening of our Churches for Worship

We are delighted that we are able to open our churches again both for Sunday worship and for private prayer. The dates and times for worship are below:

Oct 4th

8am Holy Communion (BCP), Rowde Church

10am Holy Communion (CW), Bromham Church

Oct 11th

8am Holy Communion (BCP), Sandy Lane Church

10am Holy Communion (CW), Rowde Church

Oct 18th

8am Holy Communion (BCP), Bromham Church

10am Holy Communion (CW), Bromham Church

Oct 25th

8am Holy Communion (BCP), Sandy Lane Church

10am Holy Communion (CW), Rowde Church

Oct 29th

7.30pm All Souls, Rowde Church

Remembrance - We don't know yet what the guidelines will be in November, but it seems unlikely that we can hold our usual Remembrance service in Church. Instead, we expect to hold a short act of Remembrance at 3pm on November 8th outside at the War Memorial. We will let everyone know through Facebook and our website.

For November services please visit: <http://www.achurchnearyou.com>

Or contact the Benefice administrator: sarahbromhamandrowde@gmail.com

Church will seem very different, but you will understand the reasons why – we all need to reduce the risk of spreading infection by staying at least 2m apart from each other. Only half of the pews will be used, with places where you can sit clearly marked. For the moment, singing is not allowed as it carries a risk of spreading small droplets, and we will all take care to use hand sanitizer when we come into the building.

Receiving communion is completely optional. Those who do receive will have the host (wafer) only, as sharing a chalice is not allowed yet. Face coverings are required unless you have a medical exemption.

Private Prayer

The churches within our Benefice are also open for private prayer on the following days.

Mondays

St Matthew's Rowde 2pm - 4pm

Tuesdays

St Nicholas Bromham 10am – 4pm

Thursdays

St Matthew's Rowde 2pm – 4pm

Fridays

St Nicholas Bromham 10am - 4pm

Every Day

Sandy Lane 10am – 4pm

We will continue this weekly pattern for the time being. Churches will look different to before lockdown, with some areas cordoned off. These measures have been put in place to comply with Government and CofE guidelines, and to make our churches as safe as we can. There has been a rigorous risk assessment carried out for all of our Benefice Churches and we are taking care to clean and sanitise thoroughly.

If you have any questions about any of this, please do get in touch. We are also open in a limited way for baptisms, weddings and funerals.

Facebook – There is a Thought for the Day on Monday, Wednesday, Friday and Saturday, written by Revd Heather Smith, Caroline Culley, Fran Hall or Revd Ruth. In order to see this, search for “Churches of Rowde and Bromham” on Facebook, or click on this link: https://www.facebook.com/groups/439328832796693/?ref=group_header

Weekly video of worship – we hope to publish recordings of the 10am Sunday service in Church on YouTube, so you will be able to watch it from Sunday evening onwards. The link to this channel is here:

<https://www.youtube.com/channel/UCEaEU1Oqi6iDABPgvyc1LQQ/featured>

You don't need to subscribe to watch the films.

Please check the Church notice board for further information

Or contact the Administrator:

Sarah Bowler 07876142112
sarahbromhamandrowde@gmail.com

Open the Book

For more information, contact Fran Hall:
07989758412 or Sarah Bowler: 07876142112
sarahbromhamandrowde@gmail.com

Growing in Faith

Please contact Ruth Bray on 01380 859847
or ruthbray@outlook.com for more details.

Mothers' Union

Please contact Carole Myer for details: 01380
850706
ed.myer@btinternet.com

Church Cleaning

For more information contact Jane Moss
on 01380 729160 jmosscaudet@gmail.com
Maureen Hiscocks 01380 725406 for the
brass cleaning rota.

Choir

Choir Leader: Gavin Moss 01380 719160
Choir Practise Junior and Adults will return as
soon as possible.

Bell Ringing

Contact: Richard Heath rich.p.heath@gmail.
com/ 01380 722379

St Matthews Café

Hoping to reopen soon on Tuesday mornings.
Please visit our page on A Church Near
You for the latest details <http://www.achurchnearyou.com>

Or contact Caroline carolineculley1@outlook.
com or Revd Ruth for more details.

Flower Arranging

For further information please contact: Jane
Sartin j.ksartin@talktalk.net or call 01380
727446.

Contacts

Rector:

Revd Ruth Schofield:
07738 858909
01380 850191
revrschofield@gmail.com

Associate Priest:

Heather Smith
07795 822515

Lay Minister:

Caroline Culley
07557 983940

Church Wardens:

Vacant

Benefice Administrator:

Sarah Bowler 07876 142112
sarahbromhamandrowde@gmail.com

Find us at the website:

www.achurchnearyou.com

Facebook page: Churches of Rowde and Bromham

Message from the Rectory

Dear Friends,

It would be easy to think, while walking through the jubilee wood or along the canal, that nature is doing her thing despite the virus. And it's true that our particular bit of Wiltshire is beautiful and mostly peaceful. Watching David Attenborough's TV programme about the extinction of species threw a different slant on things. Together with experts on climate change, viruses and the natural world, he drew a picture of every effect we have on the world being very closely linked. Our overuse of resources greatly contributes to the destruction of the rainforests. If we want to preserve our planet, we need to act now.

Lockdown has rather forced our hand! Most of us would have flown somewhere on holiday this summer, or driven rather more miles than we've been able to, to visit loved ones. We've had to miss out on some of those trips, which has a good effect on the planet, but can be disastrous for our mental health. And the effect of local businesses too has been hard - forced to close for months, and to change their ways of doing things dramatically to balance the need to make a living and to keep us all safe.

In church too, we are keeping that balance. We've changed dramatically, to keep everyone safe, but to stay open as much as we can. If you haven't dropped by, you'd be very welcome. We're open for prayer on Mondays and Thursdays, and the church is a calm and tranquil place to spend time meditating or just sitting in God's presence. The recent "rule of 6" doesn't affect places of worship, as we are already keeping a safe distance even inside. On Sundays church feels a little different, as most of us wear masks unless we're speaking from the front.

Caring for the environment is vital for the future of our planet, so that our children and grandchildren can grow up in a diverse and balanced place. But we do also need to survive now, using resources that are local and sustainable. This autumn, I hope that you can be sustained and nourished by the beauty of the countryside around us and by the services of our local businesses. And also by spiritual refreshment. If you are able to come to church, we will keep you safe.

In his love, Revd Ruth

Seasoned Logs and Kindling Available



Don't Shiver, We Deliver

**Call James on
07970 781828**



PAINTING & DECORATING SERVICES

Your friendly, female decorator!

All decorating or painting projects considered,
including children's murals

I am tidy, reliable and competitively priced

Call Carolynn on 07881 200218
or email ceeceedecorator@gmail.com

Modern & Traditional
Designed Memorials

M J SLY

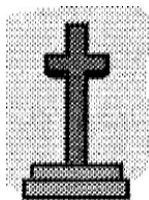
Memorial Stonemason - New Memorials
Additional Inscriptions - Restorations
Free Home Visits & Brochure

Tel: Marlborough (01672) 516797

www.mjsly.co.uk

Email: martin@mjsly.co.uk

Workshop & Showroom at
Pelhams Court, London Road
Marlborough



Magazine Submission Deadlines for 2020/2021 (bi-monthly)

15th November 2020

15th January 2021

15th March 2021

WE NEED YOU!

Do you have some news to share or just have something to say about the village? If you can contribute to the content of your Rowde Village News in any way or would like to give us feedback (good or bad) or discuss any magazine issues then please contact:

Alan Watters on 01380 724788 or by email at watters.alan@gmail.com

or **Suzan Jackett** on 01380 729791 or by email at suzijj@rocketmail.com

Cloud Nine Therapies

Based in Bromham with a lovely treatment room on New Road

Offers you a way to relax the mind and body

Reiki (pronounced ray - key) is a non-invasive therapy carried out whilst you lay fully clothes on a couch

Ear Candles are a great way to help relieve ear issues along with sinus problems and is a lovely relaxing therapy

Hand Reflexology a lovely relaxing therapy covering hands up to elbows (does exactly the same as feet, just done on your hands)

Other treatments available

Contact Trudi on 07810 – 374053

Trudis36@gmail.com

www.cloudninetherapies.co.uk

find me on Facebook, twitter or Instagram

(Trudi Speirs and Cloud Nine Therapies)

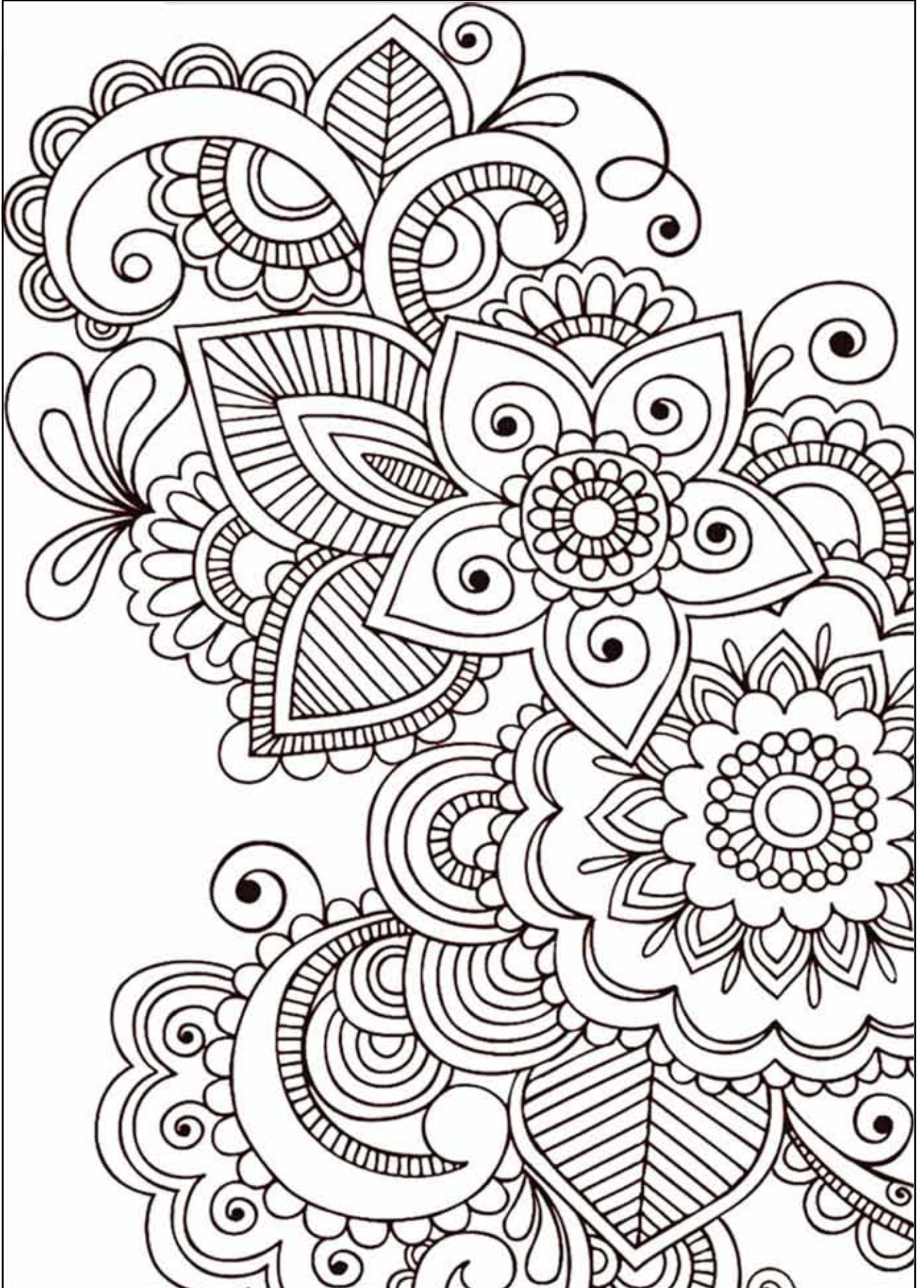
DISCLAIMER

Please note that the information given and views expressed in this magazine are generally as supplied by the contributors. Our personal comments may sometimes be expressed in the editorial on page 3 and if our views are given elsewhere, they will be credited as so. In addition, much of the local news items is sourced directly from other publications and the internet. We therefore apologise for any inaccuracies published but regrettably we have no control over this possibility happening. We will however publish any corrections notified to us as soon as possible.

Alan Watters, Editor

CHILDREN'S PRIZE COLOURING COMPETITION

See next page for details



PRIZE COLOURING COMPETITION

(see previous page)

Open to children 10 years and under who either live within the parish of Rowde or attend one of our two local schools (Rowde Academy and Rowdefield School)

Just colour in the drawing on the previous page, carefully cut or tear it from the magazine or print it first if you can only access it from the village website and drop it in to our advertising manager Julie Baker, at:

3 Church View, Rowde SN10 2NB

Alternatively take a good photograph of it on your mobile phone and send it to the editor by email at watters.alan@gmail.com or by text to 07886870053.

Closing date 15th November 2020

A prize will be awarded to the drawing judged to be the best by a local artist and the winning artwork will be featured on the cover of the December/January issue.

Name:

Age:

School:

Home Address:

Phone number:

email:

CORONAVIRUS - BLOOD DONORS URGENTLY NEEDED!

And yes, you can continue to donate if you are over 70, well and have given a full donation in the last two years. There is no longer a restriction because of government guidelines.

At the moment we particularly need:

Male donors - men can donate more often than women.

Black donors - No blood is needed and a common type for black donors.

O negative donors - hospitals need this blood type most regularly, as it can be given to all patients.

We also urgently need people who have had coronavirus, or symptoms, to donate plasma (a special plasma appointment is required).

How to register to be a blood donor?

Check you are able to give blood. Register to be a donor online, or call 0300 123 23 23. Sign in to your online account and find an appointment – a number of appointments can be booked in advance.

You can also download the NHS Give Blood App to book or manage your appointments.

SKIP HIRE

4yd / 6yd / 8yd Skips

Green waste / Hardcore
/ Soil / Timber / House &
Garage clearance

Scrap metal skip
available

Phone for all
requirements

07547 683368



**PLEASE
REMEMBER**
to mention where
you saw the
advert when you
contact any of
our advertisers!

Dolman Audio Visual

Berhills Lane Farm, Sells Green, Seend

provides

reliable and effective repairs
& maintenance to all makes of
TV, Hi-Fi & video equipment

by knowledgeable and friendly technical staff
at our well-equipped service department

Please contact

Maggie or Peter

Phone/Fax: 01380 828524

Email: peterdolman@btconnect.com

Would you like to help change someone's life?

Are you over 18 and would like a job?
Or are you recently retired and would
still like to do something rewarding
on a full or part time basis?

Do you have a positive attitude and a real
desire to support people with learning
disabilities to live the best life possible?

Hft in Rowde currently have
a range of vacancies for
support workers.

See page 6 for details

T O'ROURKE

All plastering work undertaken

No job too small

FREE ESTIMATES



Contact Troy on:

01380 698993

or 07968 634689

BUS TIMETABLE

Timetable valid from 13/07/2020 until further notice <http://www.travelinesoutheast.org.uk/>



33

Devizes - Rowde - Bromham - Chippenham

Timetable valid from 13/07/2020 until further notice.
Direction of stops: where shown (eg: W-bound) this is the compass direction towards which the bus is pointing when it stops

Faresaver

Mondays to Fridays

	1510													
Devizes, Secondary School Bus Pk (SE-bound)	0755	1033	1233	1433	1513	1610	1735	1815						
Devizes, The Pelican (NW-bound)	0800	1038	1238	1438	1520	1615	1740	1820	0815	0930	1030	1230	1430	1630
Rowde, Cross Keys (W-bound)	0803	1041	1241	1441	1527	1618	1743	1822	0820	0935	1035	1235	1435	1635
Rowde, The Coconut (N-bound)	0805	1043	1243	1443	1530	1620	1745	1825	0822	0937	1037	1237	1437	1637
Bromham, Hightfield (W-bound)	0807	1045	1245	1445	1532	1622	1747	1827	0824	0939	1039	1239	1439	1639
Bromham, nr The Greyhound	0821	1055	1255	1455	1542	1632	1757	1839s	0826	0941	1041	1241	1441	1641
Calne, opp Methodist Church	0822	1056	1256	1456	1543	1633	1800	1840s	0838	0953	1053	1253	1453	1653
Calne, o/s Town Hall														
Calne, The Pipkin (E-bound)	0826	1102	1302	1502	1539	1639	1806	1846s	0843	0958	1058	1258	1458	1658
Derry Hill, opp C of E School	0826	1102	1302	1502	1545	1639	1806	1846s	0843	0958	1058	1258	1458	1658
Derry Hill, nr Lansdowne Arms	0833	1108	1308	1508	1545	1645	1812	1852s	0848	1003	1103	1303	1503	1703
Chippenham, o/s Cemetery	0837	1111	1311	1511	1548	1648	1815	1855s	0851	1006	1106	1306	1506	1706
Chippenham, Allington (S-bound)	0845s/1117	1317	---	---	---	---	---	1821s/1901s	0856s/1012	1112	1312	1512	1712	---
Chippenham, Railway Station Approach (NW-bound)	---	---	---	---	---	---	---	---	---	---	---	---	---	---
Rowde, Cross Keys (E-bound)	---	---	---	---	---	---	---	---	---	---	---	---	---	---
Rowde, Inside School Bus Park	---	---	---	---	---	---	---	---	---	---	---	---	---	---

Sundays

no service

Notes: r - Sets down by request to driver only
s - demand stop

no service



33

Chippenham - Calne - Bromham - Rowde - Devizes

Timetable valid from 13/07/2020 until further notice.
Direction of stops: where shown (eg: W-bound) this is the compass direction towards which the bus is pointing when it stops

Faresaver

Mondays to Fridays

Chippenham, Railway Station Approach (NW-bound)	0655	---	1117	1317	1600	1640	1730								
Chippenham, Bus Station (Bay 8)	0700	0830	0930	1125	1325	1608	1648	1736	0730	0842	0942	1112	1312	1512	1712
Chippenham, opp Cemetery	0702	0832	0932	1127	1327	1610	1650	1738	0735	0849	0949	1119	1319	1519	1719
Chippenham, Abbeyfields School (N-bound)									0737	0851	0951	1121	1321	1521	1721
Derry Hill, opp C of E School	0708	0838	0938	1133	1333	1616	1656	1744	0742	0857	0957	1127	1327	1527	1727
Derry Hill, Lansdowne Arms (NE-bound)	0709	0839	0939	1134	1334	1617	1657	1745	0743	0858	0958	1128	1328	1528	1728
Derry Hill, o/s C of E School	0710	0841	0941	1136	1336	1618	1658	1746	0744	0859	0959	1129	1329	1529	1729
Studley, nr Black Dog															
Calne, The Pipkin (W-bound)	0715	0846	0946	1141	1341	1623	1703	1751	0749	0904	1004	1134	1334	1534	1734
Calne, o/s Bank House	0727	0859	0959	1155	1355	1637	1717	1803s	0801	0916	1016	1146	1346	1546	1746
Bromham, nr The Greyhound	0730	0902	1002	1158	1358	1640	1720	1806s	0804	0919	1019	1149	1349	1549	1749
Rowde, The Coconut (S-bound)	0734	0906	1006	1202	1402	1644	1724	1809s	0807	0922	1022	1152	1352	1552	1752
Rowde, Cross Keys (E-bound)	0740	0911	1011	1206	1406	1648	1728	1813s	0811	0926	1026	1156	1356	1556	1756
Devizes, Bowfort (E-bound)	0742	0913	1013	1208	1408	1650	1730	1814s	0813	0928	1028	1158	1358	1558	1758
Devizes, The Pelican (NW-bound)	---	---	---	---	---	---	---	---	---	---	---	---	---	---	---
Devizes, Secondary School Bus Pk (SE-bound)	0750	---	---	---	---	---	---	---	---	---	---	---	---	---	---

Sundays

no service

Notes: r - Sets down by request to driver only
s - demand stop

no service

Coronavirus (COVID-19) Travel Alert
Travel restrictions may apply and transportation services are subject to change. Please check online or phone **01249 444444** before you travel.

The Arts Society North Wiltshire

April 1st:
August
& 19th Cent
Barry

NOW ZOOMING
(see letters pages)

May 6th:
Pestry:
Mural Wall Decoration
Susan Kay-Williams

We are a friendly group who enjoy hearing about a wide range of arts based subjects. Many people from this area and beyond appreciate them – do come and join us! We meet in the Assembly Hall, Melksham from 10am for coffee and at 11am for a one hour lecture.

For more information go to tasnorthwilts.org.uk

Tom Ashpole TREE SURGERY All Aspects of Tree Surgery Covered



Including Hedgework And Stumpgrinding
NPTC certified, Cert.Arb (RFS) Fully Insured

Tel 01380 699473 Mob 07929 898544

Email: enquiries@wiltshiretreecare.co.uk

Web: www.wiltshiretreecare.co.uk

SPANISH TUITION

Native language tutor offering Spanish lessons and Translation

- * **GCSEs and A levels:** experience on preparing students for various exams: AQA, Edexcel, Common Entrance & International Baccalaureate.
- * **Adult tuition** to all levels: beginners, intermediate & advance.
- * **References** available if required.
- * **Contact** Patricia Córdoba on:
pcordoba@hiberniatype.com
mobile no.: 0788 496 20 79

LOCAL HONEY FOR SALE

Rowde Hall Cottage
High Street, Rowde SN10 2PL
(Opposite Cross Keys)
01380 722406
davidb.rowde@gmail.com
£5 for a 12oz jar (340g)



Local News



LOCAL AUTHOR IS PUBLISHED

Local author, Gigi Karagoz, gets 5 stars reviews on Amazon for 'The Fallen Persimmon'.



With 71% of reviewers giving 5 stars, Gigi Karagoz is over the moon at such a positive reception for her debut novel, 'The Fallen Persimmon'.

Set in 1980s Japan, it's a suspense/romance/crime fusion that examines the guilt of loss, forbidden love, and the limits of forgiveness. Showing the beauty and the darker side of Japan, the reader is drawn into a world beyond the cherry blossoms. It all starts innocently enough, with two girls teaching English in a small town, but each chapter builds suspense as the stakes are raised higher and higher.

Gigi says 'When people think of Japan, they usually think of Tokyo's neon lights and mile-wide zebra crossings. Or they may think of the cobbled streets and geisha houses of Kyoto, or a temple framed by cherry blossoms, like you see featured in travel brochures. I wanted to beguile the reader with my portrayal of small town Japan; a world not often seen, or written about.

These uncertain times, the fast pace that we are living at, as well as the lack of travel opportunities make this a great time to read 'The Fallen Persimmon;', as it offers a chance to lose yourself in an unusual setting and culture.'

The back cover blurb:

Money blows across a field, the notes slapping against the stubble of dry rice stalks. Mr Ito walks towards the irrigation ditch at the end of his field, his rubber boots kicking up dust. High above,

cars speed along the embankment on their way to the city, and he wonders if the money was thrown from a car. He'll take it to the police; it could be yakuza (Japanese mafia) money.

Standing at the ditch, he remembers the rumour; the one about the missing English woman.

But this is Mari's story. She knows it's her fault that her sister died, and trying to move on, she takes a dream job teaching English in small-town Japan. It turns into a nightmare when Mari finds out that she's employed by the yakuza, and that the man she loves has his own dark secrets. The yakuza play their final hand, and Mari believes that once again, it's all her fault.

'I lived and worked in Japan in the late 1908s, and drew on my experiences there for this story,' Gigi says. 'It's a country I'll never forget.'

'The Fallen Persimmon' is available on Amazon in paperback and kindle format.

ROWDE FOOTPATHS NEED CLEARING

Wiltshire ramblers concerned the council is not doing enough to maintain county's footpaths

People who enjoy walking in Wiltshire's countryside have warned Wiltshire Council that not enough effort is being put into improving, let alone maintaining, the county's network of



An overgrown footpath south west of Rowde Mill, one of many Ramblers say need clearing



footpaths - which have become increasingly popular with people doing more walking for exercise during lockdown.

West Wilts Ramblers spokesman Brian Micklam has twice since January urged Cllr Bridget Wayman, cabinet member for highways and transport to 'focus the lack of resources for the Wiltshire Countryside and Rights of Way team' but has had no response.

Mr Micklam, who is the former secretary of the West Wilts Ramblers, said that the group are asking the council to get the Countryside and Rights of Way department 'up to strength so they can actually carry out efficiently what they're suppose to do'.

They are now worried that the council's extra expenses caused by the Covid-19 crisis will mean that the council's countryside team will be cut back ever further.

"We feel now we've been told to use our feet and our bikes, these footpaths are going to need more attention rather than less," he said.

Current Ramblers secretary David Yearsley said that people had found issues with some footpaths recently. "People tried to follow tracks as they thought they should be, which reminded people that the footpaths weren't really good enough," he said.

"Some farmers were anecdotally getting annoyed that people were wandering off track."

Mr Yearsley added "It's very easy for someone with a strimmer to wander the footpaths and make sure they're kept clean and neat. If a footpath is not cleared it can get overgrown quite quickly. Especially to casual walkers thinking they can go out for a stroll in sandals or flip-flops. I think the clearance programmes has been less than what they would have been – they've certainly cut back on that."

They say the problem is a long-standing one, and that in 2010, Mr Yearsley wrote to his MP and asserted that 'Wiltshire Countryside and Rights of Way Team is not effective' and last month the MP Danny Kruger accompanied

the ramblers on a walk around Rowde, alongside Cllr Wayman and Richard Broadhead, head of Rights of Way and Countryside.

Cllr Wayman defended the council's actions, saying: "The Covid-19 pandemic has presented Wiltshire Council with a number of challenges. Restrictions

had to be placed on our own countryside access officers and contractors and volunteers. The good news is that we have not had to reduce the amount of funding available.

While many other facilities for recreation and exercise have been unavailable for a large part of this year, the ability for people to be able to use local paths has been very important.

We are looking forward to working in partnership with the Ramblers and the many other volunteer groups in Wiltshire's communities again."

DOCA NEWS - DEVIZES WINTER FESTIVAL

We're sorry that we haven't been able to bring you all the fun of the Street Festival, Carnival and Confetti Battle this year and current circumstances prevent us from having our usual Lantern Parade.

HOWEVER... Instead, we will be hosting **Devizes Winter Festival** focusing on an art installation trail and market stalls full of local Independent Traders, Makers and Crafters.

We will be ensuring audiences and shoppers stay safe and follow appropriate Coronavirus safety measures. The event will run from **Friday 27th to Sunday 29th November**. We hope this will give festival-goers more time and space to browse stalls, pick up some special Christmas gifts and enjoy delicious food.

Traders to register your interest and for further information visit our website: <https://www.docadevizes.org.uk/christmas-stalls/>



MP Danny Kruger

We will be releasing further information for audiences soon. Please save the date!

The DOCA team - are partly furloughed and are working through emails etc. from home. we will get back to you as soon as we can - please call if your enquiry is urgent. Thank you for your patience.

DOCA - DEVIZES OUTDOOR CELEBRATORY ARTS

www.docadevizes.org.uk

Please note: Loz Samuels - Artistic Director works Tuesday - Friday - 07500 786541

Claire Brown DOCA Admin works Thursday & Friday 07393673893.

Liz Lavender works Tuesday and Thursday - 07780860922

Find us on facebook, Twitter and instagram.

SEND PUPILS WILL COME BACK TO CLASSROOMS AS PART OF THE NORTH WILTSHIRE SCHOOL AT ROWDE

Pupils with special educational needs and or disabilities in north and west Wiltshire will be part of a new school as they return to class recently.

The school, which has the working name North Wiltshire School, has been created across the St Nicholas, Chippenham, Rowdeford, near Devizes and Larkrise, in Trowbridge sites, ahead of the plans to build a new campus at Rowdeford.

A Wiltshire Council spokesman said:

“September marks the beginning of a new and exciting stage of the work together to create a new school across the three sites that supports Wiltshire children and their parents and carers, promoting inclusion and excellence in teaching and learning.”

Sean McKeown has been appointed as the interim executive head. However, the current headteachers at each site will remain the same and they will continue the day-to-day running of the schools.

Cllr Laura Mayes, cabinet member for children, education and skills said: “The new name and new executive headteacher role marks an important chapter in our longer term plans for special school provision in north Wiltshire.

“He will be working closely with existing staff, including the senior leadership teams of the three sites, to ensure this is a joint effort across all three sites.”

Mr McKeown said: “I am excited for the challenge of leading the school in the next few months. I have a strong passion for developing leaders and raising achievement for all pupils. Curriculum planning is at the heart of my work, ensuring that the quality of education is exceptional and providing pupils with the

sufficient knowledge and skills for future learning and employment.”

This summer it was announced Willmott Dixon will oversee the work to invest £33m to build the new school, which will provide 400 places for SEND pupils.

The council described the site as a ‘school within a school’, and said that there will be a community of small teaching clusters that will provide a range of specialist spaces, therapeutic support and quiet dining.

The school will also feature a hydrotherapy pool and outdoor learning area available to all pupils. Main construction works are expected to start next summer and be complete for September 2023.

MAN AIRLIFTED WITH SERIOUS INJURY AFTER BEING CRUSHED BY VEHICLE IN ROWDE

On 7th September a man was airlifted to a Bristol hospital after being crushed.



All three emergency services were called to the incident in Close Lane, Rowde, at around 11.40am after a report that a man had been hit by a car.

Wiltshire Air Ambulance landed a stone's throw from the scene in a nearby field as local ambulance crew and firefighters from Devizes and Melksham attended the casualty.

The casualty, a man believed to be in his 60s, suffered a serious leg injury and was flown to the regional Major Trauma Centre at Southmead Hospital by air ambulance at around 12.55pm. The helicopter landed at the hospital with the patient at 1.15pm.

Wiltshire Police also attended the scene but left shortly afterwards. It is not yet clear how the man came to be injured, but there are not believed to be any suspicious circumstances. (see also next report)

HORSES INJURED IN AIR AMBULANCE RESCUE



In a dramatic air Ambulance rescue, three horses were injured when the chopper had to land in a field next to a medical emergency in Rowde in early September.

The aircraft touched down in the paddock off Close Lane where a man in his 60s had been crushed by a car.

A charity spokesperson said the landing site chosen was the best option at the time.

“The landing site was chosen as it provided the easiest and quickest access to the critically injured patient at the time, who we airlifted to Southmead Hospital. Every consideration was given to the horses nearby, who were observed throughout by our aircrew on both landing and take-off. We have already been in contact with the horses’ owner, with whom we sympathise, and we will continue to discuss this matter with them directly.”

MIDDLE-AGED CYCLIST HURT IN SUSPECTED HIT AND RUN ACCIDENT

Devizes police are appealing for witnesses after a middle-aged cyclist was injured in a collision with a car that did not stop.

Police were called to the bottom of Caen Hill, at Rowde, just before 10.30am on Wednesday 26th August. They responded to reports of a cyclist being hit by a car. It was reported that a black Audi was involved in the collision with the male cyclist, in his 40s, and failed to stop. The bike was badly damaged and the cyclist was taken to RUH but his injuries are not thought to be serious.

FRIENDS RAISE OVER £50,000 IN CHARITY BIKE RIDE

FIVE cricket enthusiast friends have raised £53,000 for charity doing a bike tour of all 18 first class county cricket grounds in England and Wales.



The Potterne Spinners who made the 1,100 mile round trip are Mark Colyer, 52, from Potterne, Sam Gaiger, 42, from Market Lavington, Tim Richards, 47, from Eastcott, Jon Weeden, 47, and Steve Wells, 58, both from Rowde.

The group embarked on their epic journey on August 25 and were cycling to raise money for The Cystic Fibrosis Trust and Cancer Research UK. The group set out an initial goal to raise £45,000 for the two charities, but have so far raised £53,000 with the cricket club’s competition still to come which could push the total to over £60,000.

Originally planned for earlier in the year, the group had to postpone the challenge from May to August, due to coronavirus restrictions, and adapt their training regimes. The trip started at the Somerset County Cricket Club in Taunton and climaxed in Potterne, 11 days later.

Mr Gaiger, a director of Gaiger Bros in Devizes, was the brainchild behind the challenge. His wife Louise, 12-year-old son, Elliot, and daughter, Sophie, 10, all suffer from cystic fibrosis.

The plan first came about when Mr Gaiger, who has already run four marathons for the Cystic Fibrosis Trust, wanted a new challenge away from running. He said: “I wanted to combine it with the cycling. The idea quickly gathered momentum with the others after a few pints.

Mr Gaiger, who has been part of the cricket club all of his life, said that the journey was long but the group all had a lot of fun. “On day two we had 120 miles to do from Cardiff to West Bromwich and it was rainy, windy and cold for 85 miles. We had similar weather conditions on days three, four and five. It’s a long, long slog really but we have to keep going and to say to ourselves it’s harder to have the conditions for people who have cystic fibrosis or the people affected by cancer than it is for us to keep pedalling.

We’re all extremely grateful to the generosity and kindness of spirit everyone has shown us – and again the cricket club has been a massive support to us during the whole challenge, without them we wouldn’t have

gotten anywhere near what we've done. Some days weather, especially at the start of the trip, was quite heavily against us and the last week or so has been in our favour."

Potterne Cricket Club has boosted the Potterne Spinners' target by almost £3,000 as part of the club's wider fundraising initiatives during lockdown.

The Potterne Spinners cycled around 100 miles a day, from Somerset to Gloucestershire, Glamorgan, Worcestershire, Warwickshire, Lancashire, Yorkshire, Durham, Nottinghamshire, Derbyshire, Leicestershire, Northamptonshire, Middlesex, Surrey, Essex, Kent, Sussex and Hampshire, before the home leg to Potterne.

AIR AMBULANCE LASER ATTACK

The wife of a Wiltshire Air Ambulance paramedic who was on a flight targeted by 'idiots' using a laser has launched a petition to get them banned.

Claire Tucker says she cannot sit by and do nothing as 'senseless morons' could kill her husband and father of her three children.

"They are going to kill someone," she said. "It petrifies me at the thought. I want him to walk the girls up the aisle. I can't imagine life without him and I get so angry with these people. If someone was to threaten their dad what would they think?"

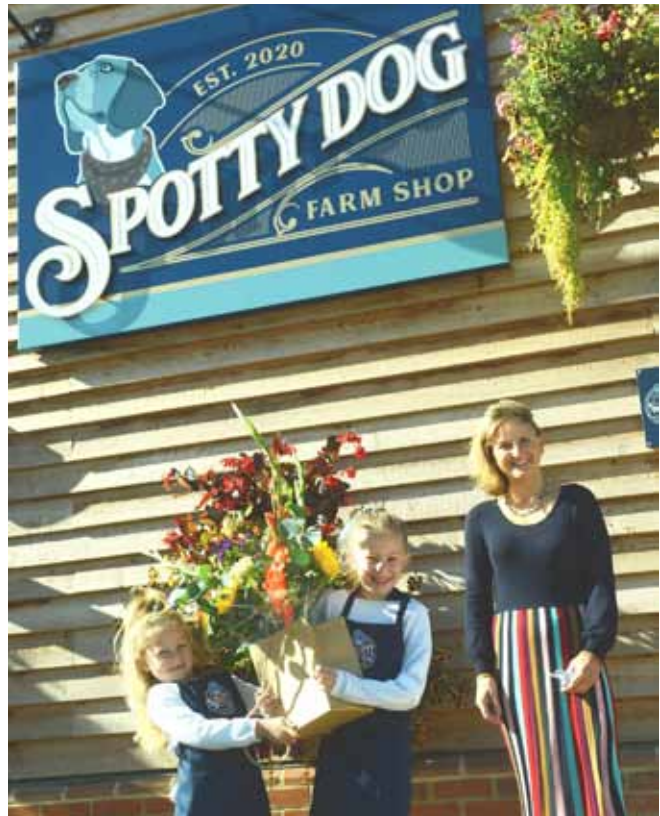
In the fourth incident in Wiltshire this year, the air ambulance had to abort a landing procedure after being hit by a laser beam near Trowbridge. It was on a night training exercise when the pilot reported a bright flashing light in the cockpit.

Claire has now launched a petition and wants to get 100,000 signatures in order for the matter to be brought before Parliament.

"I went on eBay and found that you can buy a laser pen which has a 50 mile range and only costs £12. Why would anyone want this? I want to get them banned for sale here and sent back from customs or destroyed. My husband is really angry and confused and a bit frightened about it. They can plan for bird strikes and the weather but there is no planning for this. It could bring them down instantly. I am just expecting that call - how am I going to tell my girls this? And I burst into tears when I think about it. My twins are only two and if he were to come down they would never know him."

Wiltshire Air Ambulance chief pilot Matt Wilcock said the charity had had enough of these incidents. "We want this to stop," he said. "It is dangerous, and can prevent an injured or sick person from getting to hospital. Maybe they think we are police helicopters spying on them. There is no way to tell the difference at night."

SPOTTY DOG IS OPEN... AGAIN!



After 18 months of planning, and a pandemic in the way, the Spotty Dog has finally had its official opening. Wiltshire councillor Laura Mayes did the honours and threw the doors open. But it was not the first time. The Farm Shop actually opened on March 21...and closed again three days later as the country went into lockdown.

Owner and Managing Director, Kerry Davies said: "Having invested so much time, energy and money into transforming our original business, PinkBox Boutique into the Farm Shop I had always dreamed of owning, I wasn't about to give up everything we had worked for and we had new staff to think of as well."

The new Farm Shop is based at Lower Farm, Rowde, already home to the Rowdey Cow Café and Ice Cream Parlour.

"We knew we could serve our community by offering home delivery of essential food items, but we also needed to keep our staff safe, so we decided to keep our doors shut to the public. We shifted the shop around so we could fit in additional food chilled food storage and everything we would need to be able to change from being a traditional shop to a busy food distribution centre."



We also set up a Safe Zone outside of our shop for customers who wanted to shop as part of their daily exercise and collect their orders from us. We risk assessed our potential new operation, rewrote all our policies and procedures in conjunction with our staff. Everything happened so quickly – it amazes me now when I look back at what we managed to achieve.

It wasn't easy – we also had to contend with extensive food supply chain issues and fresh produce prices became volatile and expensive and the quality was often hit and miss. But being a Farm Shop, we already had many local suppliers and so we were able to keep much of our range in stock for the most part.

In May, the Government gave the go-ahead for Garden Centres to open and we decided that we were ready to open our doors again to the public. After another shift around and some additional measures put in place to keep safe, we did just that. Lockdown was really hard work for us, but we learned so much and our team is closer and more determined than ever to see our business succeed.”

ROWDE VETERAN MARKS VJ DAY

Retired soldier Wayne Cherry was determined that those who continued to fight in the Far East at the end of the Second World War would not be forgotten.



Wayne, Les Welling and Jim Margery

Mr Cherry walked 75 miles around Devizes in a week in the lead up to the 75th anniversary of VJ day on August 15.

Before the walk he said: “I will be raising money for SSAFA but I also want people to remember that after VE day our military was still fighting for months longer before Japan surrendered.”

He started his walk on the Friday at 10am from outside Wadworths in New Park Street and did laps of the town.

He walked 10 miles a day from 10am to 1pm and on some days people joined him on the circuits (I myself joined him on his last day and thoroughly enjoyed it - see photo, *Ed*). On the final day the total collected had reached £1088.01 which is an amazing amount, so well done Wayne!



Wayne, me (Alan Watters) and Jim Margery

Mr Cherry, who is a member of Seend Royal British Legion and lives in Rowde, is no stranger to fundraising. In 2018 he completed 100 days of remembrance for the fallen from the First World War.

...AND A BIT MORE FROM WAYNE

Now some of you might know that last Christmas the wonderful Mandy Terry gifted a cake to me, which together with help from Jeannette Von Berg we raised a total of £172.34 via a raffle to go towards VE day commemorations, which due to covid had to be shelved.

On VE day I however, provided soft drinks, Tea, Pimms and lots of donated cake, to those who supported me through my fundraising for NHS charities on my driveway and I used 1/2 of the raffle money to supplement this, so had a much watered down marking of VE day.

The other half of the raffle money (£86.17) has been paid into the bank for VJ 75 supporting SSAFA.

SPEED CHECKS

In Rowde recently, PC Hamel and SPC Baston carried out speed checks. A number of people were given strong words of advice regarding their driving, and their details were taken.

THE BUZZ ABOUT BEES

Autumn tasks

The season is coming to an end for the bees. They are busy filling up on ivy nectar and pollen and they are checked to ensure they have enough stores for winter and fed if not. The autumn feed is a thick syrup, 2 lbs of sugar to 1 pint of water, scaled up as required. On windy sites the hives are strapped to their stands and the entrances are reduced in size to stop mice moving in for the winter. The mice won't risk it when the bees are active but when they are huddled together in the cold, mice will creep in to a warm dry hive with a ready food supply and cause serious damage. Some beekeepers have problems with woodpeckers and have to construct a chicken wire cage round the hive.

Last time I talked about getting the honey harvest away from the bees without too many stings. Now we will cover the extraction and jarring processes. The bees, left to their own devices will build honey combs from the ceiling of their home, downwards to store their honey. Most beekeepers give the bees frames with a little wax in to encourage the bees to build the combs in a convenient (for the beekeeper!) place. Honey boxes (or 'supers' - they go above the hive) contain 10 frames. Each frame has around 3000 cells in the comb and is a miracle of nature in itself with around 3 ounces of wax constructed by the bees into honeycomb holding up to 2 and a half pounds of honey. The honey is sealed into the combs by the bees with a thin layer of pure beeswax, called the capping. This must be removed before the honey can be extracted. There are many methods but we use an uncapping fork, which has 20 sharp slender tines which are slipped under the cappings and lifted to expose the honey. The uncapped frame, is place in the extractor, on warm days already dripping with honey. For most beekeepers the extractor is their most expensive bit of kit. They range from models which will take two frames at a time to monsters holding thirty frames or more. Ours holds 9 frames, is electrically powered and represents 2 years of Christmas and birthday presents!

When a full set of frames is in place in the extractor, it is switched on, spins up to speed (around 280 rpm) and the honey is flung out of the frames by centrifugal force. The honey runs down the side of the extractor and gathers in the reservoir at the bottom. It is then run out of the extractor through a tap (or 'honey gate') before being run through a coarse filter to remove pieces of wax, into a honey bucket where it is kept, sealed, until it is needed for jarring. Everything that comes into contact with the honey is food grade stainless steel or food grade plastic.

To jar the honey, the bucket is warmed gently to allow it to flow, then poured into a settling tank and left to stand for around 24 hours to allow small bubbles to escape. The settling tank has a honey gate or tap on the base and the honey is run from the tap into clean jars and a new lid is firmly screwed on. The outside of the jar is cleaned to remove any wayward stickiness, then labelled.



Uncapping a frame of honey



One in, 139 to go!



A frame ready for the extractor



Filtering - no pollen is removed



Labelling along with a well-earned cuppa

David Brown, Rowde Hall Cottage
01380 722406 davidb.rowde@gmail.com

OBITUARY

Renate Ann **CLARK** of Rowde, passed away peacefully aged 86 years on Friday 28th August 2020 at the Royal United Hospital, Bath, following a short illness. Widow of the late Patrick Edward Clark; Renate will be sadly missed by all her family and friends. The funeral service was held at St. Matthew's Parish Church, Rowde. Donations if desired to support Wiltshire Air Ambulance and all enquiries may be sent c/o: Charles S. Winchcombe and Son, 37 New Park Street, Devizes, SN10 1DT. Tel: 01380 722500

**Please note that:
THE DEADLINE FOR
CONTRIBUTIONS TO THE
ROWDE VILLAGE NEWS
is the 15th of every second
month, the next being
15th November 2020**



ANY BIN WILL DO!

Keep Britain Tidy, Chief Executive said recently:

“Our most recent research tells us that people see dog fouling as, by far, the most unacceptable and dirtiest type of litter, and the biggest concern in environmental quality.”



There is a risk to health from uncollected dog faeces. Toxocarisis is caused by roundworm parasites in unwormed dogs. In rare cases, the roundworm larvae can infect organs such as the liver, lungs, eyes and brain.

All dog waste should be picked up, even when walking in fields and woods. There is a danger to cattle if dog waste is left on grass which is then cut and given as feed.

This is your community; your children.

Please be respectful of their school and play spaces; keep all dogs out.

From Rowde Parish Council

DOG WALKER / PET CARE SERVICES

Does your dog spend too much time home alone? Do you find it hard to fit in regular daily exercise for your dog amongst the stresses of everyday life? Let me help you! I'm a dog walker with over 10 years' experience working with dogs and other animals. I have worked for guide dogs and have been a supervisor at a busy kennels, as well as years helping at veterinary practises. My passion for animals runs very deep and their care and welfare is of up most importance to me. I am experienced, offering

a professional, caring and friendly service to dogs & their owners of all Breeds I am fully insured and first aid trained.

I have a Facebook page where you can see reviews and updates of your dogs on their walks.
www.facebook.com/boopeeandfriends/

My website is www.boopee-and-friends.co.uk. Feel free to message me via website or on my Facebook page. Alternatively you can call me on 07368635866.

Charles S. Winchcombe & Son
INDEPENDENT FAMILY FUNERAL DIRECTORS & MEMORIAL CRAFTSMEN
Est. 1932



- Longest established
- Family owned and run
- Qualified and Licensed
- Available 24 hours a day
- Each funeral personalised
- Pre-paid funeral plans
- Craftsman made memorials



01380 722500 Winchcombe House, 37 New Park Street, Devizes, SN10 1DT www.wiltshirefunerals.co.uk

Wiltshire Mind



Your Local Mental Health Charity

Depressed? Anxious? Stuck? Grieving?
Stressed? Not Managing?

COUNSELLING SERVICE

A safe, confidential and personal place to talk, and help you to move forward

A low cost counselling service in the community for all

Initial Assessment Free of Charge

For further information please contact:

Wiltshire Mind
24a High Street
Melksham
SN12 6LA

Email: counselling@wiltshiremind.co.uk

Phone 01225 706532

Reg Charity Number: 1113751 Reg Company Number: 5498430

Are you age 60+?

Come and join our friendly exercise class and help maintain/improve your mobility
(Exercises may be done seated or standing)

Mondays

2.30pm – 3.30pm

followed by coffee/tea and a chat at Rowde Village Hall

Cost : £3.00

For more information contact:

Yvonne 01380 723086

yve@thegablesdevizes.co.uk

ACTIVE PLUS



RD

RUDI DALBY

**LOCAL LASTING POWER OF ATTORNEY
SPECIALIST**

THINK: who would arrange your care and finances for you if you were to lose capacity? Without LPA's in place this is not possible

ACT NOW: LPA's can only be put in place whilst you have the capacity to do so

~ Home and evening appointments

~ Professional, efficient and friendly personalised service tailored to you

Safeguard yourself, your family, your assets and your wishes for now and for the future.

07791879774 rudidalby@gmail.com

Contact me for queries and further information

rudidalby@gmail.com

07791879774

**Easterton
Vehicles Ltd.**

ATA Automotive
Technician Accreditation
Master Technician AT 1803087958

**Independent
BMW, Mercedes, VW, Audi
and Skoda Specialists
at less than 1/2 dealer prices.
All Makes Mot's & Servicing.**

Award Winning Knowledge Of Modern Motor Vehicles
Champion Bright Spark 2006 - 2nd
Auto Trade Technician 1999 - Winner

John Kyte, Director

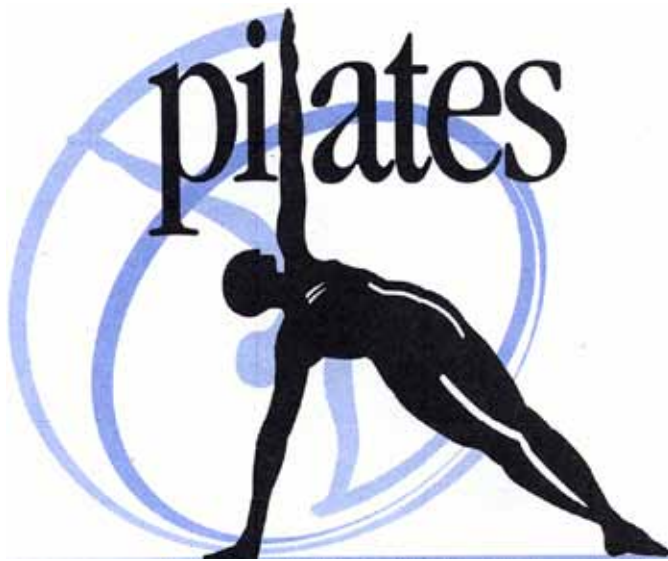
Unit 1 Hillcroft Farm, 5 Easterton Sands, Devizes
Wiltshire, SN10 4PY

Call: 01380 812192 or 01380 816436

www.eastertonvehicles.com

Move.Every.Day.

Day time and Evening Classes for Beginners and Intermediates
at Rowdefield Farm, Conscience Lane & Charlotte School of Dance, Bath Road



for further information please
visit my fb page
move every day pilates
and
follow me on instagram
med.pilates

For any enquiries please email suzijj@rocketmail.com or call
Suzan on 01380 729791

FREE CAT NEUTERING



Do you want to
neuter your
kittens
and
cats?



You know it's the right thing to do, and..
we are here to help you!

RSPCA Wiltshire Mid Branch

will pay, for a limited period, the cost of
neutering and, at the same time, micro-chipping
your cats and kittens if you live in
Devizes, Melksham, Westbury or Warminster
or the surrounding villages.

To apply for financial help to have your cats neutered,
and, if you wish, micro-chipped at the same time,
please send a blank e-mail to cnwiltsom@gmail.com
We will reply with a link to the application form.
If you prefer you can telephone 07494-240622

YOU CAN APPLY FROM 25TH FEB. UNTIL 30TH APRIL 2021



Wiltshire Mid Branch
Registered charity no. 205925

Working together
to help you
and your pets



Registered charity no. 203641



**Food Deliveries & Call & Collect
available from our Farm Shop at
Lower Farm**

**Fresh local Meat Products, Fresh Bread
& Cakes Daily, Fresh Fruit & Veg Daily,
Dairy, Cheese, Yogurts, Dried Goods,
Sweets & Chocolate and lots more**

**Free Delivery to our local Rowde
Residents – Just get in touch and let
us know what you need**

www.spottydogfarmshop.co.uk

Phone: 01380 720002

Email: hello@spottydogfarmshop.co.uk

Facebook Message our Page

www.facebook.co.uk/spottydogfarmshop

SHORT STORY

ROWDE CAR DEALER MARK CALAZ

Mark was a fit, healthy guy who loved hiking and organising expeditions for the Army Cadet Force until he was diagnosed with a glioblastoma multiforme (GBM) brain tumour in November 2019, aged 52. Now he is determined to enjoy whatever life he has left with his wife Mandy.

Mark tells his story...



Mark and Mandy on their wedding day

I have always loved walking, particularly in the mountains, so it made sense to join the Army Cadet Force (ACF) back in 1994. I soon found myself organising expeditions for the annual summer camps held for around 300 cadets, along with taking over responsibility for the Wiltshire cadets who were working towards their Duke of Edinburgh Awards.

I organised one particularly memorable expedition to Everest base camp for five cadets and five adults back in 2010.

I also became the main leader for the Ten Tors, an annual challenge for teenagers in the South West of England, which involves 400 teams of six taking on hikes of up to 35, 45 or 55 miles on Dartmoor. The routes require the youngsters to visit 10 nominated tors or check points in under two days.

It was also in 1994 that I first met Mandy when she joined the ACF, although it wasn't until 2007 that we got together as a couple.

Living next to Salisbury Plain, the two of us would normally go for an evening stroll after work, which would almost invariably turn out to be at least five miles.

My official day job, which I did for 20 years, was working for the family firm, Slades of Devizes, selling used cars. I was on my feet for most of the day, and normally by 11am I had achieved 10,000 steps. Mandy, meanwhile, a civil servant working for the Ministry of Defence (MOD) sitting at a desk, normally had to wait until our evening rambles to notch up her 10,000.

Then all of a sudden in the autumn of 2019, I felt poorly with flu-like symptoms. I couldn't get out of bed and had a couple of weeks at home. The GP diagnosed sinusitis.

One day in mid-November, I collapsed at home. When I returned to consciousness, I remember wondering why I was lying on the floor. Initially when I got to my feet, I couldn't get my legs working. At lunchtime, Mandy gave me her daily check-up call but she couldn't really understand what I was saying – it was all gobbledegook. She immediately came home to find me seeming fairly normal but being a first aider and feeling something wasn't right, Mandy decided to ring 111, who advised her to call for an ambulance.

I was taken to A&E at Salisbury District Hospital, where I was told after a scan that I had a lump in my head and that I would be transferred to Southampton General Hospital.

I underwent a whole raft of scans and tests and the next thing we knew, we were sitting in an office being told I had a fast-growing glioblastoma multiforme (GBM) brain tumour.

The neurosurgeon explained that it would only be possible to remove about 80% of the tumour and that I was looking at a limited time-span of at best 18 months given I was a healthy man. I found it very difficult to register everything he was saying, but Mandy did and was very upset.

SHORT STORY (cont'd)

“On the drive home, I remember thinking that essentially I felt fine, although I did have a bit of double-vision, so I couldn't fathom how I might only have 18 months to live.”

I was determined that the first thing to do was to get our house future-proofed. We ensured that the electrical and plumbing was safe; we also changed from a LPG gas cooker to an electric one so that Mandy doesn't have any issues changing gas bottles. We have had some gardening done but there's still more needed. We have also arranged things like powers of attorney and sorted our finances in general. We have many other little jobs around the house that we would like to get done in time.

“I am also helping Mandy learn many DIY tasks as I know one day she will have to do these without me. I am also making her catch spiders herself now.”

On 23 December 2019, I had my craniotomy and it all went as well as expected.



Mark after surgery

I then was due to have both chemotherapy and radiotherapy, but the chemo tablets upset my liver so that was stopped. I was initially told I would have six weeks of radiotherapy, but this was reduced to three weeks with double the dose each time. I felt it was a bit of a bonus that I only had to go for three weeks of radiotherapy because I had to hand in my driving licence following surgery and Mandy was having to drive me five days a week to Southampton for the treatment. This constituted a trip of one hour and a quarter each way, just for a two or three-minute session.

“The lasting effects from my surgery and treatment include forgetting words and only being able to walk about two and a half miles at a time.”

I do feel fatigued really quickly. As an example, if I mow our small garden, I feel completely pooped afterwards.

I try not to dwell on what's coming and focus on the positives and making the most of each day.

Mandy and I love baking and have made



cakes, cookies and shortbread for the ACF and asked for donations, although since lockdown it's really been the two of us eating the fruits of our labour so I seem to have managed to put on a fair bit of weight!

It's not until you have cancer yourself that you realise how many people get it. The amount of funds going into brain tumour research is ridiculously low so, while I am still here, Mandy and I are determined to raise as much awareness as we can for the charity Brain Tumour Research.

“I am also working out, with help from the charity, how I am going to lobby my local MP, who is Prime Minister Boris Johnson's political secretary, and get him on board with the need for a lot more funds going into finding a cure for brain tumours.”

Mark Calaz, July 2020

Brain tumours are indiscriminate; they can affect anyone at any age. What's more, they kill more children and adults under the age of 40 than any other cancer... yet just 1% of the national spend on cancer research has been allocated to this devastating disease.

Brain Tumour Research is determined to change this.

If you have been inspired by Mark's story, you may like to make a donation via www.braintumourresearch.org/donation/donate-now or leave a gift in your will via www.braintumourresearch.org/legacy Together we will find a cure.

If, like Mark and Mandy, you are interested in becoming an activist, including lobbying your MP, please go to www.braintumourresearch.org/campaigning/our-activists

PHILIP HALE

Clinical Sports & Remedial Massage Therapist

Promoting a healthy body and mind

PRE TREATMENT POSTURAL ASSESSMENT

Soft Tissue Massage

SPORTS INJURIES

Training & Muscle Conditioning
Preparation

TREATMENT & PREVENTION OF: MUSCLE
INJURY, BACK PAIN, POOR POSTURE AND
EVERYDAY STRESSES & STRAINS

Pre, Inter & Post Event Treatment &
Recovery

WILTSHIRE BASED & MOBILE CLINIC

Please call for an appointment

TELEPHONE: 07825180179

EMAIL: reception@philiphalesportsclinic.co.uk

WEBSITE: www.philiphalesportsclinic.co.uk

INDUSTRY MEMBERSHIP AT THE
LONDON SCHOOL OF SPORTS &
REMEDIAL MASSAGE

4CHILDREN



What your 4Children Children's Centre offers

Groups and services that run from your local centre are designed for families with children under five. Your centre can provide you with information or advice on all aspects of family life, so drop in to visit us or call one of our staff team.

**For further
information or to get
involved, telephone
01380 739835**



Sure Start

Wiltshire Council



Canal Boat Rental

From the Wharf below
Caen Hill Locks

www.foxhangers.co.uk

Choose from our fleet of 14 modern
narrowboats, all built new at Foxhangers

Visit our website for complete details of our

Weekend Breaks

Midweek breaks

Weekly Breaks

More to Foxhangers than boat hire!

Bespoke boat building/Re-fits/Painting

All aspects of boat engineering

Chandlery

Tel: 01380 828795

4 self-catering units and a campsite
available at Lower Foxhangers

Visit www.foxhangers.com for details

WHISTLEY CANINE COUNTRY CLUB



WHISTLEY CANINE COUNTRY CLUB
AND CATTERY

**Our Modern Luxury Heated Cattery
For Tiny Tigers is Now Open**

Luxury Holiday Venue For Our
Canine Friends

Spacious Suites Under-Floor Heating
Day Care Facility Inspections Welcome

Potterne Devizes

01380 738189/726330

Please see our website for more details

www.whistleykennels.co.uk



FARM FRESH LOCAL PRODUCE

We only source the best local products from our own farm and local producers, all bursting with flavour and reasonably priced

Poulshot Lodge Farm, Poulshot, Devizes, SN10 1RQ

Tel- 01380 827202

Open Tuesday – Friday 10am-5pm, Saturday 9am-4pm

For more information, to follow our blog or subscribe to our newsletter visit

www.poulshotlodgefarm.co.uk

find us on Facebook & Instagram as well



@poulshotlodgefarm

Theodora Wildcroft



ROWDE VILLAGE HALL

WEDNESDAYS 10.30 AM - 12

Full term, concession and drop-in rates available.
Beginners and experienced yogis are welcome.
Call or email for bookings and further details.



theo@wildyoga.co.uk 07818401110 www.wildyoga.co.uk
Rebalance mind, body and soul with a smile.

Martina's Professional Cleaning Services

Is cleaning and ironing taking up your valuable time?

We guarantee the best price for the perfect job

Regular Cleaning

Spring Cleaning

Office Cleaning

Oven Cleaning

Window Cleaning

Carpet Cleaning

Ironing

Fully insured and absolute privacy assured

The same regular cleaner guaranteed

Call Martina on 07859818198

JOHN STUART FUNERAL SERVICE LIMITED

18 The Britox
Devizes
Wiltshire SN10 1AJ
Tel: 01380 729459



Funerals Arranged
24 Hour Service
Private Chapel of Rest

ROWDE VILLAGE



Have you visited the village website yet? You will find it at www.rowdevillage.org
(Amongst many other things, you can see your Rowde Village News in glorious full colour!)

Please note that our Rowde Village website manager is Rebekah Jeffries and she can be contacted at rowdeparishcouncil@gmail.com or 01380 720988.

Trevor Hale

NPTC Certified (arb) Fully Insured

City &
Guilds
NPTC



Tree Surgery

Felling ▪ Reductions ▪ Dismantles
Chipping ▪ Stumpremoval ▪ Hedging

Very Competitive Pricing

07737 934777

www.wiltshiretreesurgery.co.uk

Seend Cleeve

arts
together ...ageing creatively

Is an award-winning local charity, seeking to reduce loneliness and isolation and in doing so improve health and well being for vulnerable elderly people through participation in the arts. We run weekly sessions in Pewsey, Marlborough and Devizes and are looking for friends and supporters to join us in fundraising, raise local awareness and help at our sessions.

COULD YOU PLEDGE SOME TIME IN 2017 AND HELP BY?

- **Businesses:** Adopting us as your 'Charity or Choice' or supporting us in other ways?
- **Individuals:** Help spread the word in your community, join our 'friends' scheme, run a fundraiser for us, help promote our work?
- **Groups:** We have plenty of ideas and resources to support groups involvement

For more info about our activities or being involved

liz.lavender@artstogether.co.uk / 07780860922

www.artstogether.co.uk Registered Charity 1109432

HAIR AT HOME

ROWDE

Hairdressing salon style in
Rowde or mobile, you choose!

Contact Louise Allan on 07811 948374
or Email louiseallan_1@hotmail.co.uk

Very experienceds ex salon stylist

Cutting, families, colouring, perming,
children welcome



HAIR AT HOME

experience a little hair magic

Rowde Village News Pledge

The Rowde village News is independent of political parties, private interests and government. Our policy is to provide readers with a complete, fair, accurate and balanced news and information service.

Although we are a voluntary run, nonprofit making publication we still do our best to adhere to the Press Complaints Commission's Code of Practice. While we try hard to avoid mistakes, some errors can occur during the part time and hectic process of producing one of Wiltshire's largest and most regarded village magazines (apparently, from feedback received over recent years).

Our policy is to correct errors of fact as soon as possible and, where appropriate, apologise. If you find an error of concern, please contact the editor (contact details on page 3).

Thank you for your continued support and understanding.

Alan Watters, Editor

ROWDE MEMORIES



Charabanc trip from Rowde

Charabanc trip from Rowde (with people from Rowde, Durlitt and Bromham) to Gough's caves about 1925 I think. The photo came from my Aunt, Kath Haberfield, who passed away some 20 years ago.

Names are from left to right:

Dolly Bullock, Em Jefferies, Harry Bullock, Caroline Oatley (at rear), Kah Oatley next to her, Bill Bullock (child in front), Agnes and Dick Bullock in rear, George Bullock with pipe, Bessie Bullock, Eva Bullock, Mrs Bullock, Markl Jefferies, Henry Bullock, Nelson King (driver), Leslie Oatley.

I can email copies to anyone that would like one if they ask me on dg573@btinternet.com.

David White



Annie and Joseph

I think there are still a few Dalleys around Rowde so thought they may be interested in this photo of Annie Louisa Dalley who married Joseph Oatley in Rowde. They then both emigrated to Beaumaris, Canada, in 1912. She became very ill in 1926 and my mother (Joseph's niece,) went out by sea to look after her and do housework.

Annie died in 1927 and my mother returned to England shortly afterwards.

David White

Do you have any old photos associated with Rowde? Send them in! Ed

GAIGER BROTHERS LTD

Building Contractors

6 Northgate Street, Devizes, Wiltshire SN10 1JL

Tel: (01380) 722412

Fax: (01380) 727890

The Wiltshire Bobby Van Trust



Registered Charity No 1153790

The Wiltshire Bobby Van Trust provide a Courtesy Home Security Service for elderly, vulnerable and disadvantaged people living in Wiltshire, who have become, or are at risk of becoming victims of house crime or domestic abuse.

Our operators will carry out a full security and fire risk assessment before fitting the appropriate security devices. If you are over 60 or vulnerable due to a mental or physical disability and don't feel that you have adequate home security please contact us to arrange a visit.

Tel No: 01380 861155 Email: bobbyvan@wiltshire.police.uk
www.wiltshirebobbyvan.org.uk



BEWLEY

Funeral Directors Limited

Our family are here for your family

Devizes local family funeral service EST. 1970

Three generations of experience, personal values and professional service

24 Hour Service | Home Visits | Simple or Bespoke Funerals | Pre-paid funeral plans | memorials

Devizes 01380 728008

Office & Chapel: 64 New Park Street, Devizes, SN10 1DP
Over 100 reviews at www.bewleyfunerals.com



LETTERS

FREE DOOR SAFETY STICKERS



Dear Editor,

Able Community Care is a Norfolk home care company which was established in 1980 and now provides care 24/7 throughout the UK and beyond.

We continually read news/articles flagging up the activities of Doorstep Criminals: fraudulent roofers, gardeners, service officials and other non-genuine visitors who target older people. Over the years we have also had first-hand evidence from our own clients and carers.

As a company we have decided to see if we can help prevent this on a small scale and so we have had the Door Safety Sticker (attached) to give away to older people. To date we have sent out 60,000 upon request, since February 2019.

If you think your older readers may like to have one, please ask them to either ring us on 01603 764567 or email to info@ablecommunitycare.com.

We will not keep their details other than to send out the door sticker to them.

Best wishes,

Angela Gifford CEO.

LOCAL AUTHOR WRITES....

Good morning Alan,

I've recently published my novel, *The Fallen Persimmon*, and I wonder if you'd like to mention it in the newsletter?

It's available on Amazon in ebook and paperback format, and I'm pleased to say that there are some great reviews on there, and on Goodreads. It's also got quite a following on Instagram too.

Please feel free to email or call me.

Kind regards, Gigi Karagoz

(See article in the local news pages)



VILLAGE FUND-RAISING IDEA!

2020 has been a momentous year for us all; one which will live in memory for many years to come.

Your Parish councillors thought it would be a good idea to have a selection of our memories of this year incorporated into a Parish Calendar which you will be able to keep for the Grandchildren who I hope will never have to experience lockdowns or pandemics.

We would therefore invite you to select and submit some of your photos from the year from December 2019 when this wretched virus first raised it's ugly head.

We will select the most appropriate 13 for the calendar which will be sold in aid of the Parish & the McMillan Cancer Charity.

Photos in digital format should be emailed to patabryant@live.co.uk

Pat

THANKS!

My sister and I would like to thank Lisa Wills and family, Morrisons and Derek from Bath Road Spar shop for their kind help and support during lockdown. Also, our friends and neighbours, especially Mel Dalley who did all my planting and gardening whilst I was in hospital, it was truly appreciated.

Mary and Joan

THE ARTS SOCIETY NORTH WILTSHIRE

Dear Julie,

The Arts Society North Wiltshire is still up and Zooming! We have a full programme for the year plus some added bonuses via the internet. At present all our lectures are on line and members are contacted via email to give them the link. Our membership is only £46 a year which transcribes to £4.60 a lecture which is considerably cheaper than any other online art lecture. So if you are not already a member you can download a form from tasnorthwiltshire.org.uk or phone our membership secretary on 01225707534.

All lectures are on the first Wednesday of the month at 11am.

October 7th 'The Sunflower in Art and Culture' by Twigs Way

November 4th 'Art of the Steal: Nazi Looting in World war 11' by Shauna Isaac

December 2nd pantomime: 'A very British Feast' by Gilks Ramsay

If you are able to publish this we would be very grateful.

Thank you, Elizabeth Barnikel

HEDGEHOGS!

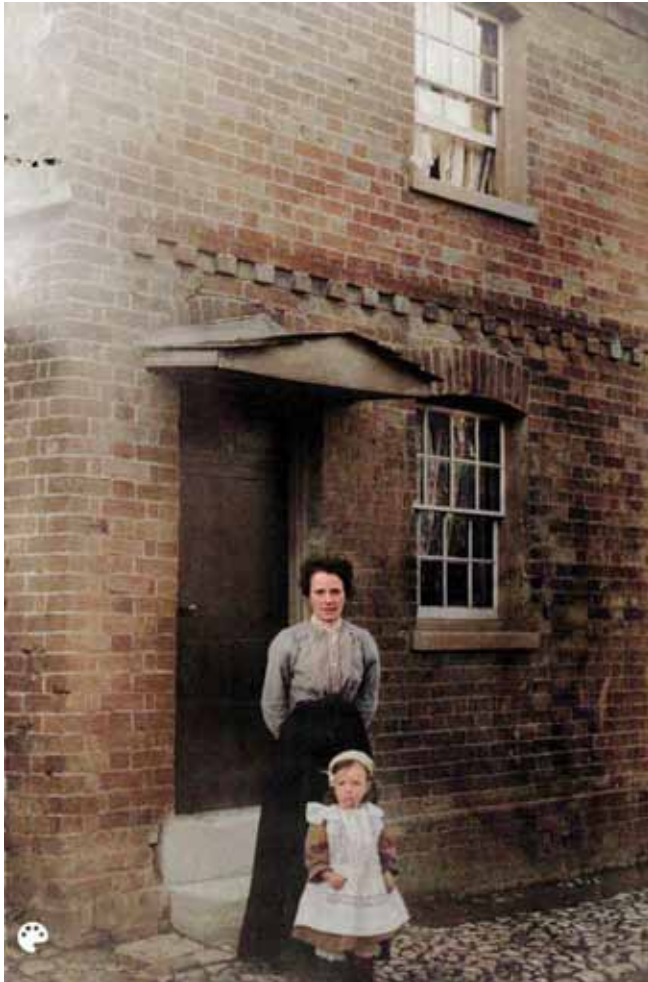
We had three little hedgehogs in our garden last night, busy rootling about. Just a reminder NOT to feed them milk as they are lactose intolerant, and

LETTERS (cont'd)

NOT to put bread out for them as it fills them up with no nutritional value. DO put out clean water and dog food, or even better, specialist hedgehog food, which is available from pet shops. The little ones need to fatten up before they go into hibernation for the winter.

Jenny Phillips

A ROWDE MEMORY



The photo shows my mother Ivy Louise White (nee Oatley) with her mother Caroline Oatley outside their home at 4 Omega Terrace in 1911.

My grandmother, Caroline, lived in Rowde until she died in 1963, moving with husband, George Oatley up to No 6, the council houses on the Devizes road when they were first built just after WW1. She was born in 1877 in Burbage. Husband George was born in Durlott and lived with his parents in Jasper's Cottage there.

David White

MP VISITS ROWDE

Hi

My name is Dave, I live in Dunkirk which used to be part of Rowde now on the edge of Devizes.

On Friday 21st August, Danny Kruger, MP, agreed to go on a walk with local Ramblers providing it was in his constituency.

He had a business lunch at the George and Dragon and I think he spoke with some of your Community Speedwatch team – so hopefully you know about that.

Rebekah, Clerk to Rowde Parish Council, asked that I write a small piece for your village magazine. I am hopeless at such things. Albeit, with the help of others we have managed to produce a press release - <https://wiltskickstart.wordpress.com/a-ramble-around-rowde-a-wiltshire-village-with-danny-kruger-mp-for-devizes/>

Perhaps you could include a reference to it in your village magazine. Would this be sufficient:

Danny Kruger, MP, and local Ramblers had a short walk around Rowde on Friday 21st August 2020. Danny was interested in how Communities and Volunteers could help to improve the Countryside. West Wilts Ramblers produced a press release called 'A ramble around Rowde, a Wiltshire village, with Danny Kruger, MP for Devizes.'

I have copied email to Sally Whiston who is Chairperson of Mid Wilts Ramblers (<https://www.ramblers.org.uk/mid-wiltshire>)

West Wilts Ramblers have 'trespassed' in Rowde before and hopefully you have noticed kissing gates and stiles that have been 'Erected by West Wilts Ramblers'.

Many thanks,

Dave Yearsley

West Wilts Ramblers Footpath Secretary/Work Party Coordinator.

Mobile 0787 210 4672

Land 01380 726 779

CORONAVIRUS LITTERING!!

What happens when you litter face coverings or gloves? Face coverings and gloves, used to protect ourselves against coronavirus, are being littered. This pollutes our environment and puts us and our wildlife at risk. We need to protect our planet.

Always bin your disposable face coverings and gloves, and consider using a reusable face covering.

Nextdoor Rowde & UK Government

....AND FROM THE MAGAZINE TEAM

We would like to take this opportunity to thank all the people in the village who have helped others in the village in whatever way during this terrible pandemic.

And finally, the magazine team, on behalf of all the readers of the Rowde Village News, would like to give a huge thank-you to all the 20+ volunteers in the village who, at this time, are continuing to go out in all weathers to personally deliver your magazine to your door.

Alan, Julie, Suzan, Sue and Richard

HESTIA

SOFT FURNISHINGS

For beautiful handmade curtains, blinds, loose covers and soft furnishings.

Browse through pattern books from James Hare, Warwick, Elanbach and many more.
Free measuring and quotations.

Telephone 07982 985925
01380 859949
01249 815334



Adams Renovations Property Services



www.adamsrenovations.co.uk

For All Your Property Requirements:

Painting, Decorating (interior & exterior)
Tiling & Flooring
Paving, Decking & Patios
Guttering & Facias
Light Building Works
Repair & Renovation Work
Bathroom Specialists

Competitive prices from an honest & reliable worker.

No job too small. All areas of Wiltshire covered.

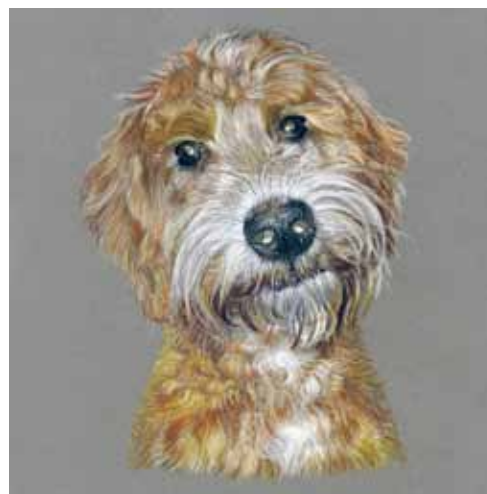
Fully insured. References available.

Email: info@adamsrenovations.co.uk

Telephone: 01380 500549

Mobile: 07725 638165

ORIGINAL PET and PEOPLE PORTRAITS



Colour or mono portrait of a person or pet by local artist Alan Watters. Original portrait. Limited edition prints and/or personalised greetings cards packages also possible. Original supplied in a quality mount ready for framing.

Call or text Alan on 07886870053 or Email watters.alan@gmail.com for more information or text/email a good photo for a quote.

Website: <https://alansfineart.com/>

ROWDEY COW

Locally Sourced Food
Children's Play Area

Spectacular Views
Miniature Ponies

Delicious Home Made Ice Cream
made using our own milk fresh from the farm

**FARM CAFE &
ICE CREAM PARLOUR**

Open 7 Days a Week

Taste of the West
South West England
GOLD
2016

Taste of the West
South West England
GOLD
2015

Cooked Breakfasts
Full Lunch and Snack Menu
Children's Menu Available
Ice Cream Available All Day
Home Made Cakes and Cream Teas

all our food is freshly made from local produce

Lower Farm, Devizes Road (A342), Rowde, Nr Devizes SN10 2LX
Tel: 01380 829666 | www.rowdeycow.co.uk

FREE CLASSIFIED ADS

FOR SALE

SONY Music Centre CD and iPod with two Loud speakers £20 in good condition

Contact Jim on 07413 618023 or 07413 592935

FOR SALE

Lady's traditional Aran cardigan, pure British Wool Marque, cream flecked with brown, size Large, £25.

Expensive purchase from Scottish boutique but sadly, unwanted gift.

01380 721422

FOR SALE

I have several items in excellent condition:

Mini Wi-Fi extender multi kit (works with ALL Broadband providers)

Pentax Binoculars 10x24 UCFV, as new

Pulsar wristwatch in working order

Small Carriage Clock in working order

Beautiful Owl from the Leonardo Collection

Good size porcelain Shire Horse

Printer Cartridges for Epson Stylus Photo R800/R1800, sealed, unopened

Solar Powered LED Gutter Light, unused

Large selection of hardback Art books

Large collection of Lilliput Lane cottages

Several ornamental Elephants (wood, brass, Onyx and other materials)

- various sizes

Email or text me for lists, photos or prices

Alan,

07886870053 watters.alan@gmail.com

How to advertise here for FREE:

If you live locally and have an item to sell then just contact Julie on juliebaker72@yahoo.co.uk or telephone 07796690413, giving a brief description of the item, the amount you would like for it, and a contact telephone number (name optional). 'Wanted' ads also accepted. **Note - private advertisers only**

Please also let us know whether your item sells or not so that we can either remove it or keep it in for subsequent months

Sudoku (Medium this month)

2								9
8	5	9				4	6	2
	6			7			5	
			2		6			
			4		8			
4		3	6		5	2		7
			3	9	1			
6		5				1		3

Last Month's Solution

6	9	3	7	5	8	4	2	1
1	5	7	2	4	6	8	9	3
4	2	8	1	9	3	5	7	6
3	4	6	9	8	1	7	5	2
5	1	9	3	2	7	6	8	4
7	8	2	5	6	4	3	1	9
2	3	5	4	7	9	1	6	8
9	6	1	8	3	5	2	4	7
8	7	4	6	1	2	9	3	5

Mini Sudoku (Difficult this month)

Insert the numbers 1 to 6 in the blank boxes so that each of the six separate areas of the puzzle and each line vertically and horizontally contains each number only once.

		6			
			4		
			5		
3			1		
		5			
	6	2		4	

Last Month's Mini Sudoku Solution

3	6	2	5	1	4
5	1	4	2	6	3
6	4	3	1	5	2
1	2	5	4	3	6
4	3	1	6	2	5
2	5	6	3	4	1

Quick Reference List of Advertisers

Advertiser	Page
FOOD:	
Local Honey	25
Spotty Dog Farm Shop	35
Farm Fresh Local Produce	39
FUNERAL DIRECTORS ETC:	
Charles S Winchcombe & Son Ltd	33
M J Sly (Memorial Stonemasons)	20
John Stuart Funeral Services	40
D J Bewley Funeral Directors	43
TECHNICAL/PROFESSIONAL SERVICES:	
The PC Doctor (Ian Diddams)	7
Dolman Audio Visual (TV & Hi Fi repairs)	23
Spanish Tuition	25
Become a support worker	6
Rudi Dalby - Power of Attorney	34
Original Pet & People Portraits by local artist	46
The Arts Society North Wiltshire	25
HOUSE MAINTENANCE:	
House Cleaning (Martina)	40
Painter & Decorator (Lawrence Plumb)	4
Plasterer (T O'Rourke)	23
Adams Renovations	46
Hestia Soft Furnishings	46
Building Contractors (Gaiger Brothers)	43
KFR (used furniture and white goods)	7
Cee Cee Painting & Decorating	20
Skip Hire	23
Gray & Amor Ltd, Property Renovation	7
GARDEN SERVICES:	
Tree Surgery - Trevor Hale	41
Tree Surgery - Tom Ashpole	25
Green Man Gardening	16
PUBS/RESTAURANTS/CAFES/B&Bs:	
The Rowdey Cow	46
George & Dragon	
HEALTH AND FITNESS:	
Clinical Sports & Remedial Massage	38
Active Plus for over 60s	34
The Tranquil Moment Health & Beauty	48
Wiltshire Mind	34
Theo Wildcroft Yoga Classes	40
The Sycamore Centre	4
Pilates Classes	35
Cloud Nine Therapies	20
North Wessex Therapies	10
Foot Health Practitioner Beauty Therapist	50
PETS & LIVESTOCK:	
Whistley Canine Country Club	38
Dog walking / Pet care services	33
Free Cat Neutering	35
MISCELLANEOUS:	
Wiltshire Bobby Van Trust	43
Nursery - Townsend Barn	10
Canal Boat Rental - Foxhangers	38
Rowde Village Website	40

Car Sales, MOTs & Servicing	34
4Children	38
J F Chimney Sweep	4
Arts Together - Ageing Creatively	41
Hair at Home Rowde	41
Logs and Kindling	20
<i>And please remember to mention where you saw the advert when you contact any of our advertisers! Ed</i>	

Advertisers!

If you have a business and wish to have it publicised to over 600 households in the parish, or if you have a personal item to sell, then contact: **Julie Baker** on 07796690413 or by email at juliebaker72@yahoo.co.uk

Not receiving your mag?

If you don't receive a copy of the RVN, or have any other questions about its distribution then contact: **Sue or Richard Scuse** on 01380 729488 or by email at scrusefamily@aol.com

The Tranquil Moment

HEALTH & BEAUTY CLINIC

Unit 2 Manor House Yard, Poulshot Road, POULSHOT,
DEVIZES, WILTSHIRE SN10 1RY

TELEPHONE: 01380 828297

www.tranquilmoment.co.uk

email: tranquilmoment@live.co.uk

**Decleor facials,
microdermabrasion, massage,
sports massage and injury clinic,
shrinking Violet fat loss body wraps,
CND shellac and Brisa Lite
sculpting gel nails, CND manicure
and pedicure, Apilus electrolysis,
CACI non surgical face lift,
Decleor and CND stockist**

Please call Jo at The Tranquil Moment Health and Beauty Clinic to make an appointment

Call us or follow us on Facebook for up to date offers and news

Quick Reference Contacts and Village Guide

Listed below in alphabetical order are the various village organisations with contact names and telephone numbers

Allotments

Chris Stevens, Tel: 01380 738438

Bell Ringing

Friday evenings, Bell Tower, St Matthew's Church at 7.30pm
Contact Richard Heath
on 01380722379

Bingo

Mondays 8 pm in Village Hall

Charities

Rowdeford Charity Trust
trustees@rowdefordcharity.org.uk
www.rowdefordcharity.org.uk

Children's Art & Craft Classes

Hayley Mitchell 01225458679
hayleymitchell@thecreationstation.co.uk

Church Coordinator

Benefice Administrator:
Sarah Bowler 07876142112

Church Choir

Junior & Senior Choir Practice
Thursdays at 7.00 pm at
St Matthew's Church,
Gavin Moss 01380 729160 /
07771780016

Church Wardens

Michael Cornwell Tel: 01380 722855
Gavin Moss Tel: 01380 729160

Doctor

For list of doctors contact the
Health Commission, Pans Lane,
Devizes, Tel: 0300 111 5717

Football

John Dalley, Tel: 727094

Footpaths

Ivan Whittaker-Axon 01380 728669

Garage

Slades of Devizes Tel: 727755

Hospitals

Devizes Community Hospital
Tel: 723511
Chippenham Community Hospital
Tel: 01249 447100
Trowbridge Community Hospital
Tel: 01225 711300

Ladies Club

Held in Village Hall on last Tuesday
in the month at 8 pm.
Mrs Di Buckland, Tel: 723049

Local Councils

Wiltshire Council
Tel: 0300 4560100
Devizes Town Council 722160

Neighbourhood Police Team

Jo Newbury Rural Beat Manager
PCSO Georgina Dodd
Ring 101
Google devizes npt to contact the
team on
www.wiltsmessaging.co.uk>devizes

Parish Council

Chair - Mr John Hawkins
Tel: 07929 424781
Clerk - Mrs Rebekah Jeffries
Tel: 01380 501919
PC Repairs - 07833696328
ian@pcdoctor-devizes.co.uk

Playing Fields

For playing field bookings
please contact the Parish
Council Clerk on 01380 501919
rowdeparishcouncil@gmail.com

Police

Devizes Police Tel: 101

Pubs/Restaurants

Cross Keys, Tel: 739567
George & Dragon, Tel: 723053
Rowdey Cow Cafe, Tel: 829666

Rifle Club

Practice Wednesdays, Matches
Thursdays in Village Hall.
Laurence Plumb, Tel: 728174

Roads/Pavements

'My Wiltshire App or 03004560100

Rowde Court Studios

Ann Swan, Tel: 01380 724788

Rowde Rainbows

Meet: Tuesdays 6.15 to 7.15pm
Contact: Emma Moffat 07780756411
Email: RowdeRainbows@gmail.com

Rowde Village News

Alan Watters, Tel: 01380 724788 or
07886870053 watters.alan@gmail.com

Rowde Village Hall

Enquiries - Tel: 07926952631
Bookings - 722497 (after 6 pm)

Rowde C of E Primary Academy

High Street, Rowde SN10 2ND
Head teacher - Lorraine Colquhoun
723991

Rowdeford Special School

Head Teacher
Mr M Loveridge Tel: 850309

Hft (ex Self Unlimited)

Sharon Young, Tel: 721309

Sewing Circle

Ring Yvonne on 01380 728745

St Matthew's Flower Guild

Liz Ibbetson, Tel: 720630
Flowers for all occasions,
Weddings, Funerals &
Anniversaries

TAXI

R H Reeves 725072
J Dalley 07592 063789

Toddler Group

Village Hall Thursdays 9.30-11.30

Tuesday Afternoon Club (60s+)

Held in Village Hall first Tuesday in
the month at 2.30 pm.
Mrs D Ellis, Tel: 722655

Veterinary Surgeries

Estcourt - Tel: 723687
McQueens - Tel: 728505
The Paddock - Tel: 813202

Village Fete - Lisa Wills

Enquiries - Tel: 01380 730078

Website

www.rowdevillage.org
rowdeparishcouncil@gmail.com
or contact Rebekah 01380 720988

Youth Club

Iain Marr 07540017184

Foot Health Practitioner Beauty Therapist

Margaret Alison DipFH MAFHP MCFHP CIDESCO

**Offering a wide range of treatments including
Nail cutting Callus and corns Fungal conditions
Facials Waxing and tinting**

www.margarettreatments.co.uk

**For appointments and enquiries
07921 295744 01380 698190**

**4 Market Place Devizes SN10 1HT
(entrance via Station road)**

TRUE OR FALSE QUIZ ANSWERS

1. False - Prince William is 1.91m, Prince Harry is 1.86m
2. True
3. False - she's won three! She won Best Actress for The Iron Lady in 2012, Best Actress for Sophie's Choice in 1983, Best Supporting Actress for Kramer vs. Kramer in 1980.
4. False - it's Rabat
5. False - she sings it 21 times!
6. True
7. False - M&M stands for Mars and Murrie
8. True - as is vodka, white rum, lemon juice, triple sec, sugar syrup and Coca-Cola
9. True
10. False - there's only one: the teeth.
11. True - He was born in 1968, while Jason Orange was born in 1970, Gary Barlow was born in 1971, Mark Owen in 1972 and Robbie Williams in 1974.
12. True - London to Beijing is only 8,136 km, The Great Wall of China is 21,196.18 km
13. False - there are 236
14. False - 'E' is the most common letter and appears in 11 percent of all english words, according to Oxford Dictionaries
15. True

VILLAGE DIARY

Parish Council Meetings

(All Wednesdays - venues to be confirmed)

14th OCTOBER 2020 7.30pm

11th NOVEMBER 2020 7.30pm

9th DECEMBER 2020 7.30pm

Zooming Events (see page 44)

7th October

'The Sunflower in Art and Culture' by Twigs Way

4th November

'Art of the Steal: Nazi Looting in World war 11' by Shauna Isaac

2nd December pantomime:

'A very British Feast' by Gilks Ramsay

Other Events

15th November

**Closing date of Colouring Competition
(see pages 21 & 22)**

27th to 29th November

**Devizes Winter Festival (see pages 27
& 28)**

LOCKDOWN HUMOUR



Modern problems require modern solutions!



Excellent social distancing!

Imagine being less intelligent than a pigeon!



Children's **Colouring** **Competition Winner!**

Congratulations to Gregory Mogford, Age 5 from Scholars Park, Rowde who is the winner of the colouring competition in the August/September issue.

Gregory will be receiving art materials donated by Ann Swan from Rowde Court Studios.

(See this issue's competition on page 21)



CHESTNUTS FARM CSA CIC

COMMUNITY SUPPORTED AGRICULTURE

Vegetable Box Scheme

Based in Bishops Cannings our CSA was born during lockdown, and is all about local food resilience, and being involved in how your food is grown. The idea is that members pay monthly in advance to support the growers, and then share the harvest. We are in the process of certifying organic. As a baby CSA, we still do buy in some extra from an organic wholesaler, to make sure the share is always fairly consistent.

We want to bring food production to a more local level, so that people know where their food is coming from and can take part in growing it. Members of the vegetable box scheme receive a share each week, and (in non-COVID times) are invited onto the farm for volunteering days.



We have weekly vegetable boxes to be collected from the farm, or various other collection points. We can also deliver throughout Devizes and villages.

Prices start at £32.50 per month for a small box, for a single person, or less hungry couple. There are a very few spaces left for this year, so if you'd like to be in at the start, you can join us through the winter. Just email us at chestnutsfarm@gmail.com. You can collect from the farm, or from The Healthy Life, in Devizes, or we deliver for an extra pound per week.

If you would love to be part of this growing movement, but would rather wait until next spring, when the sun comes back, (and we hope volunteer days will be back as well) then simply ask to join the waiting list, and we will add you to our Facebook group if you would like, and you can follow the fun through the dark days of winter, and come on board when our new share issue goes live in April. Once again, email chestnutsfarm@gmail.com and we will send you details.

Email: chestnutsfarm@gmail.com

Find us on Facebook: [chestnuts farm](#)

or Instagram/Twitter: [@chestnutsfarm](#)

Text or call: 07814 605800

We're planning to work with local schools, homeless charities and more vulnerable groups to provide support for our community. We believe that fresh, healthy, locally grown vegetables should be a choice, not a luxury.

