

# Rowde Village News

A photograph of a sunset over a village. The sky is a mix of blue, pink, and orange. In the foreground, there are dark silhouettes of trees and buildings. The sun is low on the horizon, creating a bright glow.

**February/March 2019**

**75p**

## Meet The Magazine Team 2019



**Editor**

**Alan Watters**

Tel: 01380 724788

Email: see page 3



**Assistant Editor**

**Suzan Jackett**

Tel: 01380 729791

Email: see page 3



**Advertising**

**Julie Baker**

Tel: 07796690413

Email: see page 3



**Distribution**

**Jan Lindsay**

Tel: 01380 725455

Email: see page 3

Plus of course, around 25 additional volunteers who deliver your magazine to your door!

## Some 'spirited' History – where to beGIN?

Gin's basic flavour is from juniper berries and gin making can be traced back to the Middle Ages. Today, many gins are widely available. There are different styles of gins, plus flavoured and very aromatic gins, too. Gin cocktails continue to be hugely popular, with many 'devotees'.



Warner Edwards are creators and distillers of hand-crafted, artisan gins. Their Victoria's Rhubarb Gin is named because the original rhubarb crop, from which the current rhubarb crops are descended, was grown in the kitchen garden of Buckingham Palace, during Queen Victoria's reign. The mouthfeel and palate enjoys the tangy sweetness. Also, prosecco makes a great mix with this gin. Other Warner Edwards hand-crafted gins include their splendid Harrington Dry. [www.warneredwards.com](http://www.warneredwards.com)

The Cotswolds Distillery, established 2014, produces an excellent quality, hand-crafted, dry gin, which is unfiltered, so as to retain all the flavour of the botanical extracts and essential oils. This classic production is produced in small batches and is well-balanced, with an 'inviting' nose of citrus amongst the bouquet's appeal. The mouthfeel and palate continue the enjoyment, which is clean and crisp. This exceptional gin is part of their range. [www.cotswoldsdistillery.com](http://www.cotswoldsdistillery.com)

Gordon's is a very well-established company. Premium Pink Distilled Gin I found refreshing and aromatic. The inclusion of raspberry, strawberry and redcurrant 'natural flavourings', make for a superbly-balanced and often-selected gin production. Another impressive gin, inspired by Gordon's original pink gin recipe of 1880. A company dedicated and committed to producing and supplying high-quality drinks. [www.gordongin.com](http://www.gordongin.com)

Chase Rhubarb & Bramley Apple is a single-estate production, from the Chase Distillery Company, Chase distils from the field to the bottle and has an excellent range of drinks. This gin is carefully crafted by distilling G B gin with freshly-pressed rhubarb and Bramley apple juice, which comes directly from the farm. This impressive production is perfect anytime and great for spritz cocktails. [www.chasedistillery.co.uk](http://www.chasedistillery.co.uk)

*by Trevor Langley*

## Editorial

Welcome to the February/March edition of the Rowde Village News and I hope you enjoy reading it.

We also welcome Jan Lindsay as the new Distribution Manager on the magazine team (see opposite page).

This month we have the usual excellent reports from our schools, clubs and societies and also some very good articles.

I would recommend checking out this month's 'Eating Out' review. Ann and I visited the new cafe at Honeystreet Mill a couple of weeks ago and we are delighted to report that we found it to be a real gem of a place to go for lunch. Read all about it on page 7.

And if anyone is interested in steering where housing development takes place in our village and be part of a Neighbourhood Planning Group, please have a look at the article 'A Neighbourhood Plan?' on page 32.

We have also received another two old school photographs. See if you can recognise any of the pupils from days gone by on page 35.

Finally, you should all be aware now that, in order that you continue to receive a free copy of this magazine, we have moved to publishing bi-monthly. It is important therefore that contributors and advertisers plan well ahead (at least two months) of the new deadline dates given on page 22.

***Cheers for now, Ed***

---

This magazine is brought to you thanks to Jam Print Design & Printing and all the advertisers

### Notice to contributors & advertisers

This magazine is generally printed in black and white in hard copy and delivered free to every home in the parish but additionally it is hosted on the **Village website** in full colour. If anyone does not wish any particular details (photographs, names, contact details, etc) to appear on the World Wide Web then they are advised not include them in their submissions, thank you.

### Contributors please also note:

The deadline for articles and any changes to advertisements is the 15<sup>th</sup> of every second month.

***Inserts:*** Due to the extra work created by inserting leaflets into the magazine and the fact that the team is already stretched, we very much regret we are unable to accept requests of this nature except in very special circumstances, when there will be a small charge.

*Views expressed in this magazine are those of its contributors. They do not necessarily represent the views of the magazine's editorial team.*

## Contents

### February/March 2019

**Rowde all about it** (pages 4 & 5) *News and views from village organisations*

**Eating Out** (page 7)

**Rowdey Cow News** (pages 8 & 9)

**Rowdeford School** (page 10)

**Rowde Primary Academy** (page 11)

**Fun Column & Photo Fun** (page 12)

**Rowde Parish Council** (pages 14 to 17)

**Village Shop Report & Recipe** (page 18)

**The St Matthew's Pages** (pages 20 & 21)

*inc. Church Rotas and details of Services and Events*

**News from Hft** (page 23)

**Short Story** (page 27)

**Local News** (pages 28 to 31)

**A Neighbourhood Plan?** (page 32)

**Memories from Rowde Primary** (page 35)

**Apple Pie does not need Sugar** (page 47)

**Letters** (page 49)

**FREE Classified Ads** (page 50)

**Sudoku** (page 51)

**Quick Reference List of Advertisers** (page 52)

**Quick Reference Contacts and Village Guide** (page 53)

**Village Diary and Rowde Bus Times** (page 54)

---

## The Magazine Team

Alan Watters (Editor)

Tel: 01380 724788

Email: watters.alan@gmail.com

Suzan Jackett (Assistant Editor)

Tel: 01380 729791

Email: suzijj@rocketmail.com

Julie Baker (Advertising Manager)

Tel: 07796690413

Email: juliebaker72@yahoo.co.uk

Jan Lindsay (Distribution Manager)

Tel: 01380 725455 Ext 1004

Email: jan.lindsay@hft.org.uk

---

## Cover Photograph

The stunning photograph on the front cover this month was taken through the trees and over the chimney pots of Rowde and sent in by Rosie Berry. Thanks Rosie, it is a super image!

## ROWDE LADIES CLUB

On November 28th in the Village Hall, the members were pleased to welcome our friends from the Bromham Wives Group and the Devizes Evening WI for our usual Christmas Evening.

The entertainment this year was provided by Andrew who played a selection of classical and seasonal music on his guitar, some numbers we sang along to and all enjoyed.

Apart from some difficulties with the food arrangements I think everyone had a good evening.

The next meeting will be held on January 29th when Yve will be giving us 'Gentle Exercises' to get rid of the Christmas 'flab'! We will then be meeting on February 26th and March 26th at 7.45pm in the Village Hall, programme to be arranged.

**Di. Buckland, Secretary 01380723049**

## HIWAY CLUB

*(for the hearing impaired)*

The members of the Hiway Club met in the Village Hall on November 21st for their Christmas Evening. The evening began with a most enjoyable Ploughman's Supper catered for by Mrs Maureen Burbidge. This was followed by Quizzes and Musical Bingo which proved popular to all. To end everyone was given a card and small gift to take home.

There will be no meeting in January or February but hopefully we will be back on March 27th (weather permitting) in the Village Hall for either a Games Evening or a speaker.

**Di Buckland (Secretary) 723049**

## ROWDE VILLAGE HALL

Well here we are again at the start of a New Year which we hope will be a good one for everybody.

The Christmas Bazaar held on December 8th was again very successful with over £600 being made for Village Hall funds which is used for further improvements and general upkeep of the Hall.

As well as the usual stalls we were pleased to have Renata who sold her lovely homemade Polish cakes and biscuits!

Many thanks to all who 'manned' the stalls, donated items to sell or for the raffle, gave donations or who attended and spent their money!

**The ANNUAL GENERAL MEETING** will be held on March 5th (See separate notice).

Events to be held this year:

APRIL 13th - **BRIC A BRAC and BOOK SALE**

May 4th - **PLOUGHMAN'S LUNCH**

August 3rd - **ANNUAL FLOWER SHOW**

September or October (Date to be confirmed) - **PLOUGHMAN'S LUNCH**

November 30th - **CHRISTMAS BAZAAR**

Many thanks to our loyal band of supporters who we are greatly indebted to as without you we would not be able to keep the Hall as I hope you would agree a warm, safe and pleasant building to attend.

**Barrie Barrett, Chairman**

## MONDAY CLUB NEWS

*Bromham and Rowde Day Centre for Older People*

### Gentle Movement for Older People

Do come and join us for 'Gentle Movement' at the Social Centre on alternate Monday mornings as part of Monday Club. The Gentle Movements are designed for older people and those who have some limited movement. It is completed sitting down. Participants are advised to only do exercises that they can do comfortably. The aim is to help you maintain strength and flexibility and improve posture. Why not join us for lunch afterwards? For more information on Gentle Movement or Monday Club please contact:

**Caroline Culley,**

**07557 983940 / 01380 850531**

**carolineculley1@outlook.com**

*The Monday Club is a community day centre and lunch club for older residents of Bromham and Rowde. It is grant aided through Wiltshire Council.*

## ROWDE TUESDAY AFTERNOON CLUB

On December 11th we went to the Three Crowns in Devizes for our Christmas meal which we all thoroughly enjoyed.

We will be meeting again on February 5th and March 5th at 2.30pm in the Village Hall. We would love to see some new members so if you would like an afternoon out to meet up for a chat and a cuppa plus an occasional game of Card Bingo or a Quiz, come along, you will be welcomed.

**Daphne Ellis, Secretary/Treasurer 722655**

## LAURENCE PLUMB

Interior & exterior Painting/  
Decorating

Free Estimates

Tel: 01380 728174

## ROWDE BOOK CLUB

Our next meeting will be on Wednesday 27th February and the book is 'A Winter Book' by Tove Jansson. **Contact Ann on 01380 724788 for further info.**

### BOOK REVIEW

#### ***A Perfectly Good Man*** **by Patrick Gale**

This is a beautifully written, extremely readable and cleverly constructed book.

It jumps back and forth in time, focusing on the different characters, all interesting, credible and skillfully portrayed.

The shocking suicide of a paralysed young man takes us on a journey of all the lives that have intersected, culminating in this tragic event, which opens the book.

It is set in a small West Cornish parish whose priest is Barnaby Johnson – A Perfectly Good Man.

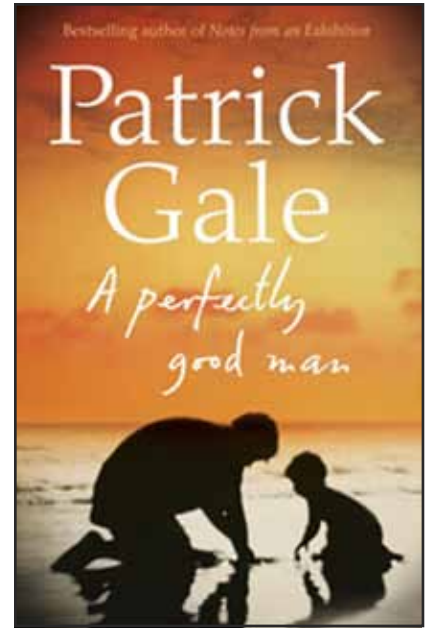
Twenty year old Lenny Barnes, confined to a wheelchair after a rugby accident, requests a visit from Barnaby Johnson and then proceeds to commit suicide in his presence.....

With each chapter we piece together information about Lenny, Barnaby Johnson, his wife, children and lover(!) and other members of the parish. Facts about each tell us more about the seemingly happy life of this priest, but show us the ethical and moral dilemmas he has faced.

A good story holds it all together and frequent surprises twists and turns all add to the interest and tension. Everything falls into place by the end.

Book Club members agreed it was an excellent book, thoughtfully written and well worth reading.

**Jacqui Hylands-White**



## ROWDE VILLAGE HALL the ANNUAL GENERAL MEETING

WILL BE HELD ON  
TUESDAY 5th MARCH  
2019  
AT 8PM

All those interested are  
most welcomed to attend

Due to health and age  
problems additional  
committee members will  
be welcomed

## HESTIA

SOFT FURNISHINGS

For beautiful handmade  
curtains, blinds, loose  
covers and soft  
furnishings.

Browse through pattern books from James Hare,  
Warwick, Elanbach and many more.  
Free measuring and quotations.

Telephone 07982 985925  
01380 859949  
01249 815334

FBFB



## **Rowde Junior Church Choir**

**(A Royal School of Church Music affiliated choir)**

### **Does your child enjoy singing?**

- **The Junior Church Choir has now been running for over 4 years!**
- **We are looking for more boys and girls aged between 7 and 16 to join our choir**
- **We sing a wide range of music – both traditional and modern**
- **Weekly rehearsals are held at St Matthew's Church, Rowde on Thursdays from 6.45pm to 7.20pm during term time**
- **The choir sings at Rowde parish church each month and further afield including Salisbury Cathedral**
- **All musical training will be given using the Royal School of Church Music Voice for Life scheme**
- **No experience necessary – just enthusiasm and commitment to the choir!**

**Contact: Portia Broomfield 07514047878**

**The P.C. Doctor  
(Rowde/Devizes)**

**07833 69 6328**

**ian@pcdoctor-devizes.co.uk**



**KFR**

refurbishing furniture  
reviving communities

### **Kennet Furniture Refurbiz**

The Furniture and White goods charity.  
To donate items or purchase please call:

**01380 720722 / 720200**

Unit 6B, Hopton Industrial Estate,  
Devizes, SN10 2EU.

# EATING OUT - HONEYSTREET MILL CAFÉ

Honeystreet Village, Pewsey Vale SN9 5PS Tel: 01672 851155

## About Us

We are a mother and son duo, Anne and John Wyles who created the Honeystreet Mill Café in 2018 on the banks of the Kennet and Avon canal.



Having run our own businesses in Honeystreet successfully for the past 20 years, we saw a fantastic opportunity to build a new venture together, utilising our own warehouse space, to benefit both the community and tourists, providing a space to sit, relax and watch the world go by, in the tranquillity of the Wiltshire countryside.

We wanted to create a contemporary café, to provide a community space for both residents and tourists, whether by car, bike, foot or boat.

Our focus has been on sourcing excellent quality local produce to support the smaller businesses within our county, and on increasing employment within the community, hiring local trade people to carry out works on the creation of the café, to actually working within the café as baristas, chefs and bakers, creating a warm and inviting environment for all of our customers.

Alongside serving delicious fresh foods, we have taken an interest in the historical information of the site we are based on, and are keen to inform our customers of Honeystreet's heritage, as we turn a new page, and write ourselves into its history.

We have built our café on the same site as Honeystreet Canal Boats, and The India Shop, stocking Honeystreet Homemade products, so not only will your appetite be satisfied, but your retail needs also.

Breakfast – Served 9 – 11.30 am

Light Lunch – Served 12 – 2.30 pm

Afternoon Tea – Served 2.30 – 4.30 pm

Drinks – Served 9 – 5 pm

[www.honeystreetmillcafe.co.uk](http://www.honeystreetmillcafe.co.uk)



## REVIEWS:

### Love this little treasure of a place

We absolutely love this café and visit regularly, staff are always polite friendly. Breakfast is delicious as well as the cake selection. Dogs are welcome too which is great. Fantastic walks are on the doorstep too.

*Dolly P from Salisbury (December 2018)*

### Yummy Breakfast

Lovely venue, rustic decoration which makes it very homely. Lovely woodburner made it really cosy. Good breakfast menu, lots of choice, food is delicious and coffee is good. Staff are so friendly and helpful.

*Gordon E (January 2019)*

### We were really impressed!



*Our very enjoyable lunch*

This was our first time visiting the café and we were really impressed! Location, service, food, drinks and value for money - all excellent!

*Alan (Ed) & Ann from Rowde (January 2019)*

## REVIEWS NEEDED!

**If you have eaten out lately and could write us a review please send it to Suzan at [suzijj@rocketmail.com](mailto:suzijj@rocketmail.com), thanks, Ed**

# ROWDEY COW NEWS



After a very mild start to the year things are starting to change and have woken up to a bitterly cold morning with possible snow forecast next week. We are hoping it will not be as bad as the Beast from the East last year.

We enjoyed hosting several Private Christmas Functions throughout the evenings in December where companies enjoyed a delicious 3 course meal followed by music and drinks.

Now we are looking forward to our Valentines evening which we are currently taking bookings for. We have been fortunate to secure the very talented local singer, Victoria Bolley, to sing romantic songs for the evening and our chef, Mark Jenkinson, has prepared a very saucy menu for the evening!! Places are limited so please book soon to avoid disappointment!

We will then be at half term and then before we know it it's March and Mothering Sunday will be here! Easter falls later this year in April which hopefully means that we will have better weather but who knows in this uncertain climate!

We are now offering some new ice cream desserts such as delicious hot waffles served with ice cream and ice cream Sundaes including warmed brownie and salted caramel sundaes. We have entered some of our flavours in the Ice Cream Alliance competition which is being judged in February in Harrogate. We are busy developing new flavours and also looking to take



on a couple of extra suppliers this year as our ice cream production is increasing.

We are also busy filling our diary for the year with fayres, carnivals, events and weddings so if you are organising anything which you would like us to attend in the Summer now is the time to book us in!

In other news it is exciting times as we have secured planning permission for a couple of retail units here on the Rowdey Cow site so we will be looking for prospective tenants later this year.

We hope to see you all soon and thank you for your continued support especially in these colder times!

**Sue**







# Valentines Evening at The Rowdey Cow

*Enjoy a Romantic Meal for Two at The Rowdey Cow with  
Entertainment by Local Singer Victoria Bolley*

*~ £24.95 Per Person ~*

*~ To Sit at 7.30pm ~*

**Starters:**

*'Fun Guys' - Creamy Garlic Mushrooms Served on Toasted Ciabatta*

*'Hot Prawn' - Shell on Prawns in a Lemon & Herb Butter Served on Dressed  
Leaves & a Coriander Mayonnaise*

*'Propose..... Don't Be A Chicken' - Pan Fried Chicken Livers with Brandy Cream  
Sauce Served on a Herb Crouton*

**Mains:**

*'Pleased to Meet You' - Fillet of Beef Wellington with Madeira Mushroom Sauce  
(Fillet Steak with Mushroom Duxelle, Homemade Pate Wrapped in Pastry)  
£3.00 Supplement*

*'Your Place or Mine' - Plaice Fillets with a Grape & Cucumber Tomato Salsa*

*'Fancy a Roll' - Vegetable Roulade with a Cream Cheese Filling Served with  
Tomato & Basil Sauce*

*'A Bit on the Side' - All Dishes Served with Dauphinoise Potato with Choice  
of Either Seasonal Vegetables or House Salad*

**Desserts:**

*'Feeling Fruity' (To Share)- Crushed Meringue, Warm Fruits of the Forest,  
Whipped Cream & Passion Fruit Ice Cream*

*'Bananas About You' - Grilled Banana with Muscovado Sugar, Dark Rum  
Crystallised Ginger with Rum & Raisin Ice Cream*

*'Gone all Goopy' - Indulgent Sticky Pudding with Caramel Sauce & Vanilla  
Custard*

**Followed By...**

*'TAXI' - Coffee & Homemade Shortbread*

*~ Booking Essential - Limited Spaces Available~*

*~ Telephone: 01380 829666 ~ ~ Email: [info@rowdeycow.co.uk](mailto:info@rowdeycow.co.uk) ~*

# NEWS FROM ROWDEFORD SCHOOL

*Co-operation Responsibility Happiness Resilience Respect Caring*

We welcomed the students back after a busy Christmas, our value for the coming term is Integrity.

## **Pantomime**

Students in KS3 were able to enjoy a theatre visit; thanks to a grant of £612 from the Imperial Charity. Jack and The Beanstalk was performed by a touring theatre company.



School on the 26th of February at 5pm. The meeting at the school will be no more than an hour. Please do let us know if you are able to attend

- In addition, there will be a further three open meetings for parent/carers that will be run by Wiltshire Parent Carer Council (WPCC). Details of this are available on their website

Thank you for the amazing support that we had throughout the last consultation. The strength and weight of support definitely had an impact on the outcome in November.

Please can I urge you to take the opportunity to respond to the consultation so that councillors, directors, commissioners and cabinet members understand the strength of support for Rowdeford School.

## **Rowdeford Annual Garden Fair**



Bob Summerfield from Imperial Charity visited Rowdeford to present the cheque and to visit Willow Class. The pantomime helped to enhance the lives of many students who do not normally get opportunities to watch a live performance. Everybody joined in with the excitement of watching a live performance. Chants of 'Oh no he didn't!' could be heard from all members of the audience, including the staff.

## **Local Authority Consultation**

Local Authority are taking forward consultation on the proposals agreed by Wiltshire Council cabinet in November 2018. The proposals are that Rowdeford, St Nicholas and Larkrise are to be merged in to one school, which will be built on the Rowdeford School site, scheduled to open in September 2023. The formal consultation period started on Wednesday 9th January and will close on the 1st March 2019

You can provide any comments on the consultation in a number of ways:

- Visit the Wiltshire Council website and leave a short comment on the proposals <http://www.wiltshire.gov.uk/council-democracy-consultations>
- You can send feedback to Wiltshire Council at the email address: [specialschools@wiltshire.gov.uk](mailto:specialschools@wiltshire.gov.uk)
- There will be a number of surgeries across the county. This includes a meeting at Rowdeford



Sunday 19th May is the day for the Garden Fair and we need your support. The proceeds of this event will be going towards further development of Learning Outside the Classroom (LOtC) at Rowdeford. There is exclusive entry for ticket holders from 10:00-11:00. The Fair commences from 11.00 am until 3.00 pm. There will be gorgeous plants from specialist plant growers plus practical and attractive garden accessories. Other attractions include farm animals, WI teas, a Pimm's tent, Bistro lunches and live music. Advance tickets are £4 per adult (£5 on the day) with children under 16 free. Parking is free; but sorry, no dogs. These can be purchased from school reception – please ring 01380 850309. For further information or advance tickets, please contact [ma99iemoore@gmail.com](mailto:ma99iemoore@gmail.com) telephone 01249 814979 or go to [www.rowdefordcharity.org.uk](http://www.rowdefordcharity.org.uk)

For more information about the Garden Fair please visit the website below:

<https://www.rowdefordcharity.org.uk/garden-fair/53-garden-fair>

*Please follow our Rowdeford School Facebook and Twitter accounts (@RowdefordSchool) to keep up to date with regular notices and information.*

# NEWS FROM ROWDE PRIMARY ACADEMY

*Our bright start leads to their bright future*

We've had a crazy few weeks back at Rowde after a hectic Christmas term. There is lots of wonderful learning going on here; including lots of space topics. Year one are learning about Neil Armstrong whilst year five and six are doing the solar system, a vast topic that has captured the imaginations and interest of the children and staff alike. Year two are currently learning about Florence Nightingale and everything that she did within the ninety years that she was alive. Reception are loving their topic 'it's freezing', exploring cold weathers and arctic animals (a topic that was very relevant last January). Meanwhile years three and four are learning all about The Romans.

In amongst all that excitement we had an interesting lesson about parliament. A visitor

came in and explained all about the Houses of Parliament; their roles in our society and why they are important. The children learned all about The House of Lords and The House of Commons as well, it was interesting to hear about how new laws are created and the different jobs that each have. The children loved this and had lots of questions about their local constituency. We all hopefully know now who our local MP is and the role she plays locally. We even received an invite from Claire Perry to visit her in the House of Commons; something that we are so excited about.

***You can now follow us on twitter at Rowde C of E Primary @RowdeSchool or on Facebook***

**Rowde Primary Academy offer a photocopying and laminating service**

**Photocopying @**

**5 pence – black & white**

**10 pence – colour**

**Laminating @**

**30 pence – A4 sheet**

**50 pence – A3 sheet**

**For more information please contact 01380 723991 or just pop into the school office between the hours of 8.30am and 4.00pm**

 *Agri Services*

**Agricultural and Equine contracting.**

**Fence erecting and grass care.**

**From harrowing to spraying and everything in between!**

**All enquiries welcome.**

**Call Chris on 07912345637**

 **Find us on Facebook**

**or email [chris.chagri@outlook.com](mailto:chris.chagri@outlook.com)**

## **WANTED**

### **Organist/Pianist**

**To support the musical life at St Matthew's Church, Rowde, Nr Devizes, on an occasional basis.**

**The William Sweetland organ was built in 1881, a piano is also available.**

**We have an enthusiastic senior choir and a junior choir.**

**RSCM rates: The numbers of services/practises per month are negotiable.**

***To find out more or to express interest please contact***

***Mr Gavin Moss on 01380 729160***

***or e-mail [jmosscaudet@gmail.com](mailto:jmosscaudet@gmail.com)***

## FUN COLUMN

**Welcome to this month's fun column which features a few more classic jokes sent in by 'Chugalug', one of our readers:**

Q. What's the difference between a candle and a vindaloo curry?

A. A candle only burns at one end.

Q. How do porcupines make love?

A. Very carefully!

Q. How many men does it take to wallpaper a bedroom?

A. One; but you have to slice him very thinly.

First cannibal: "I hate to say this, but I don't like my mother-in-law at all."

Second cannibal: "Well, just eat your chips then."

An Irishman goes for a job interview,

Foreman: "How many GCSEs have you got Paddy?"

Paddy: "Twentyfive".

Foreman: Ae you trying to be funny?"

Paddy: "Well, you started it!"

A campanologist friend of mine has recently decided to retire. Forty years of bell ringing have taken their toll.

### **GROWING OLD:**

1. Age is a high price to pay for maturity.
2. Don't worry about avoiding temptation. As you grow older, it will avoid you.
3. Don't let old age get you down, it's too hard to get up again.
4. Old wrestlers never die, they just lose their grip.

### **Outsmarted by a Woman**

When John found out he was going to inherit a fortune when his sickly father died, he decided he needed a woman to enjoy it with.

So one evening he went to a singles bar where he spotted the most beautiful woman he had ever seen. Her natural beauty took his breath away.

"I may look like just an ordinary man," he said as he walked up to her, "but in just a week or two, my father will die, and I'll inherit 20 million dollars."

Impressed, the woman went home with him that evening and, three days later she became his stepmother.

Women are so much smarter than men.

**Do you have a funny story to tell? Send it in!**

**Page 12**

## PHOTO FUN

This issue we have some amusing feline photos.



Do you have any interesting or amusing photos of people or pets? Send them in!

February/March 2019 Rowde Village News



# Netherstreet Beef

Born and Bred in Bromham Wiltshire

What People Say...

"Bought some steak and mince. Both absolutely wonderful and the flavour is just how "proper" beef should be! Other half not a big meat eater but even he has asked for more please!"

"Outstanding! Fantastic beef!"

Click and Collect [www.netherstreetfarm.co.uk](http://www.netherstreetfarm.co.uk)

Call 01380 859 478

---



# The Farm Cookery School

Cookery Classes for All Ages & Cookery Demonstrations

Friday Lovely Lunches

Private Events, Corporate & School Bookings

What People Say...

Had an amazing evening. We received a very warm welcome, was shown how to cook some delicious food - Then was able to eat it all up! A truly delightful experience. Cannot wait to return.

An absolute gem of a find. Thank you

Book Online [www.thefarmcookeryschool.co.uk](http://www.thefarmcookeryschool.co.uk)

Call 01380 859 478

# Your Parish Council

## Parish Council meeting - Update

The information below is current at the time of the Parish Council meeting. If events or information have changed since the meeting, they can not be reflected here. Please note, this a representation of the meeting and not the minutes in full. A full set of the minutes can be viewed at: [www.rowdevillage.org](http://www.rowdevillage.org), on the village notice boards, or by application to the Clerk.

If you would like further information on any Parish Council matter, please contact the Parish Clerk, tel: 01380 720988, [rowdeparishcouncil@gmail.com](mailto:rowdeparishcouncil@gmail.com)

The key areas discussed at the Parish Council meeting on 12th December 2018 and 10th January 2019 were:

## Happy New Year from Rowde Parish Council!

The Parish Council would like to say thank you to everyone who was involved with the village Christmas tree: I Whittaker-Axon for supplying the tree; S Mundy, J Dalley, I Whittaker-Axon & Y & D Pullen for putting the tree up and J Hawkins, Mrs D Buckland and the Village Hall Committee for siting the tree and for all of their help in keeping the lights on over the Christmas period.

## Wiltshire News – in Rowde

Council House Build Programme Phase II – outline proposal to build on land off Reed Place, Rowde.

- Central government has made funds available to local authorities to construct further housing to assist the country's affordable housing need. Wiltshire Council would like to develop more affordable housing across the county, and as such is assembling a second phase of house building which currently proposes 49 homes across 16 potential sites through the county.

- Six bungalows were recently constructed on land south of Silverlands Road: Reed Place. The remainder of the field was retained by Wiltshire Council. There is a plot to the east of the existing bungalows which offers further development potential for another small number of homes. Wiltshire Council has asked whether the proposal would be supported by the Parish Council. Rowde Parish Council has responded to say that it is supportive of the proposal in principle. It would require detailed consultation on the type of dwelling that would be built. There was also concern raised that the last development of bungalows in Reed Place did not benefit as many people from the village as they had been intended to. It was asked what the criteria would be for someone from the village to qualify for one of the new homes. Wiltshire Council intends that there will be no age restriction on these new homes and they will be allocated in accordance with the Homes4Wiltshire allocations policy.

- The Clerk has contacted Wiltshire Council to request a local affordable needs housing survey for the village. Wiltshire Council has responded to say that consultations will take place in due course.

## Statutory Consultation on Special Schools - now open! Rowdeford School

Wiltshire Council is welcoming the views of parents, careers, pupils, staff and the public on its vision to transform special needs education in the north of the county. The proposal is to close three schools: Larkrise School in Trowbridge, St Nicholas' School in Chippenham and Rowdeford School as it is now. A new school will be developed on the site at Rowdeford School.

Responses can be made to the consultation until 1st March 2019, at

- Wiltshire council's website – consultation page
- By email to [specialschools@wiltshire.gov.uk](mailto:specialschools@wiltshire.gov.uk)
- At information surgeries in the schools
- At open meetings for parents/carers run by Wiltshire Parent Carer Council (WPCC) which we be advertised on their website.

## Wiltshire Housing Site Allocations Plan

In July 2018, Wiltshire Council submitted the draft Housing Site Allocations Plan to the Secretary of State for examination. In August 2018, Wiltshire Council received a response from the Inspector and prepared a 'Schedule of Proposed Changes' for consultation. The two proposed changes to the pre-submission document on Rowde's settlement boundary are:

- To amend the pre-submission settlement boundary to retain the existing settlement boundary and include the redundant farm buildings (at Malthouse Farm). This is set back from the edge of the settlement and surrounded on three sides by residential development.
- To amend the pre-submission boundary to include new dwellings on land to the south of Silverlands Road. This is built residential development that is physically related to the settlement.

After considering the proposed changes to the draft document, Rowde Parish Council had no objections to the changes.

## Caen Hill Feasibility Study

- Wiltshire Council has undertaken a review of Caen Hill and the junctions with the B3101 (to Rowde) and C244 (to Poulshot). The data collected was used to inform a feasibility study looking at potential future changes on Caen Hill. The project has now advanced to the preliminary design stage and it is intended that Highways Officers will write formally to the interested Parish Councils and Devizes Town Council in the New Year setting out the Council's intended changes and seeking comment. Rowde Parish Council welcomes seeing the results of the feasibility study and welcomes changes to improve safety on Caen Hill.

## Neighbourhood Planning

- There are still grants and help available to start a Neighbourhood Plan. Rowde does not have a Neighbourhood Plan, which makes the parish vulnerable to developers. If sufficient villagers are interested, a Neighbourhood Planning group could be formed to take the project forward. For more details, please see page..

- Bromham has recently been designated a Neighbourhood Plan Area which signals Bromham's intention to embark on the process of producing a Neighbourhood Plan.

## Animal Licensing

At the Devizes Area Board meeting on 19th November 2018, information was shared on the changes to animal licensing laws. A new licensing regime for animal licensing took effect from 1 October 2018. Animal based activities which will require a licence include:

- Selling animals as pets (or with a view to their being later resold as pets) in the course of a business

- Providing or arranging for the provision of accommodation for other people's cats or dogs in the course of a business on any premises where the provision of that accommodation is a purpose of the business (this includes home boarding).

- Hiring out horses in the course of a business for either riding, instruction in riding, or both.

- Breeding three or more litters of puppies in any 12-month period; or breeding dogs and advertising a business of selling dogs.

- Keeping or training animals for exhibition in the course of a business, for educational or entertainment purposes, either to any audience attending in person, or by the recording of visual images of them by any form of technology, or both.

Further details can be obtained at: <http://www.wiltshire.gov.uk/licences-permits-animal>

Queries should be directed to the Public Protection North team at Wiltshire Council: [publicprotectionnorth@wiltshire.gov.uk](mailto:publicprotectionnorth@wiltshire.gov.uk) / or 01249 706555

## Rowde News

### Financial Matters

- The Parish Council debating the budget for the new financial year 2019-2020. The Parish Council has requested that additional funds are allocated to: repairs to the track off Sands Lane; the village clean-up and the hire of a rip/brush road sweeper; potential solicitor's fees for issues surrounding the Common. It was noted that the Parish Council is due to renegotiate its grounds maintenance contract again in March this year. It was agreed to accept all of the local groups' requests from the precept.

- It was commented that the Wiltshire Police and Crime Commissioner is proposing a £2.00 per month increase in his precept for this coming year. This will equate to approximately a 13% increase in the policing precept for the new financial year, although an exact percentage has not been quoted.

- Wiltshire Council is proposing an increase of 2.99%. Wiltshire Council has confirmed that it will continue to carry out statutory duties but that they are looking for Parish Councils to carry out more tasks in their own area, for example managing toilets, emptying public bins and grass cutting.

- Rowde Parish Council voted to increase its precept by 1.5% due to increased devolution of tasks from Wiltshire Council. All Councillors present were in favour. This will result in an increase of £1.04 per year for Band D houses. It was noted that inflation is set at 2.7%.

### Village Infrastructure

#### Footpath for Tanis

The Community Area Transport Group (CATG) was generally supportive of the request to create a footpath at the entrance of Conscience Lane. It is anticipated that the CATG and Rowde Parish Council will jointly fund the project. Due to the length of the pavement required, it is expected that the project will be considered as a substantive funding scheme which are considered every summer. Wiltshire Council will look at the design and potential costs then.

#### Silverlands Play Area – adoption

Rowde Parish Council would like to take over the management of the Silverlands Play Area. Wiltshire

Council do not have a maintenance funding budget for play areas. There is only money available for inspections which is why broken items or equipment are not repaired or replaced.

There is a £1000 grant available to Parish Councils if they wish to register their interest in taking over maintenance of play areas. The Parish Council has agreed in principle to take over the maintenance of the play area in Silverlands and has registered its interest with Wiltshire Council.

#### Pavilion – demolition proposed

Tender documents have been sent out for the demolition of the pavilion. The deadline for responses is 28th January. This matter will be discussed further at the Parish Council meeting on 13th February 2019.

#### Repairs

- The wooden bridge on the permissive path opposite the Rowdey Cow has been mended, with thanks to S Mundy.

- The Clerk has reported the broken gate on the footpath adjacent to the bridleway off Sands Lane to the landowner.

- The trip hazard at the uncontrolled crossing point on the High Street has been levelled by the Parish Steward.

- The Clerk has reported a faulty streetlight outside of 27 Tower View which Wiltshire Council's street lighting department is investigating.

- The Clerk has instructed repairs on the small playing ground. The basketball hoop has been graffitied. There is a loose bolt on the climbing wall and a toddler's car has been dumped into the ball spinner.

- The Clerk has reported the broken drain opposite the Tanis Farmhouse on Conscience Lane. It is reported that this was damaged during recent utilities work.

- The Clerk has reported the broken drain on the road by 12 Devizes Road. This area floods whenever there is heavy rain.

#### Rowde Village Walks booklet

- J Hawkins, S Mundy & the Clerk have met with Barrie Barrett regarding a possible revision of the Village Walks booklet which was written by B. Barrett with profits going to the Village Hall.

- There was some discussion about what size the booklet should be. It was suggested that the booklet is kept small so that it can be carried around whilst walking. It could have a plasticized cover with some OS maps included.

- The Parish Council has suggested that residents may like to become involved with the re-printing project. The booklet needs revising and updating to include new walks around the village and new landmarks. Residents could help by walking the routes to check whether any changes to the routes have been made, or by helping with the artwork for the booklet. If anyone is interested in becoming involved, please contact the Clerk on 01380 720988, or e-mail at: [rowdeparishcouncil@gmail.com](mailto:rowdeparishcouncil@gmail.com)

#### Finance

Monthly invoices for November were as follows, proposed by C Stevens, seconded by L Wills.

Admin costs	£1,216.30
Grounds Maintenance	£495.42
Christmas Tree safety	£332.23
Total:	£2,043.95

Monthly invoices for December were as follows, proposed by S Mundy, seconded by L Wills.

Admin costs	£1,223.08
Grounds Maintenance	£481.80
Christmas Tree safety	£45.60
Total:	£1,750.48

A further invoice for payment to Viking for stationery was approved the meeting in January (£47.30)

### Neighbourliness

- Please can we remind everyone to park with respect for your neighbours and residents who live in the village. Everyone should be able to easily access their own drives or houses.
- Please be aware of any hedgerow/bushes/trees that may hang over your property and cause obstructions and dangers for pedestrians and drivers.
- There is no such thing as the 'dog poo fairy'. Please keep our streets and grassed areas clean for everyone to enjoy. Please do not use our playing fields, including Rowde Primary playing field, to exercise your dogs and leave their waste behind.

### My Wiltshire App

- Please forward requests for highway repairs to the Clerk or report them through the 'My Wiltshire App'. The more reports that are logged through the App, the higher the priority will be given to the issue.
- It is easy to report problems like potholes, dog mess, graffiti, litter and street lighting in your area using the 'My Wiltshire' online form. Reports can be made anonymously or you can register for free. Once you have registered, you can track the reports you have made, and receive notification once the work has been completed. The more residents report issues, the more likely we are to have them fixed.
- The 'My Wiltshire' page can be accessed through the Wiltshire Council website at:

<http://www.wiltshire.gov.uk/parkingtransportandstreets/roadshighwaysstreetcare/mywiltshireregister.htm>

### Police Matters

If you need to report a crime:

- Please dial 101 to report a crime and 999 in an emergency.

It is possible to follow the Police on:

- Twitter <https://twitter.com/wiltshirepolice>
- Facebook <https://www.facebook.com/wiltshirepolice/>
- Or sign up to Community Messaging <https://www.wiltsmessaging.co.uk/>

### Dates for the diary –

The next Parish Council meeting will be an ordinary Parish Council meeting to be held on Wednesday 13th February, at 7.30pm in the Village Hall.

Parish Council meetings dates can be found in the village diary on the back page of the magazine.

We would like to encourage all villagers to attend, to observe and to make use of the public question time at the next Parish Council meeting.

***A full set of minutes is available on the Parish notice boards and on the village website.***

## WILTSHIRE COUNCIL

### Useful phone numbers

Libraries:	01225 713000
Parking:	01380 734812
Pest control:	01380 734721
Planning:	01380 734812
Recycling boxes - Hills Waste:	0845 6032085
Registration – Births, Deaths & Marriages:	01225 713007
Roads & pavements (Clarence) Freephone:	0800 232323
or mobile/outside Wiltshire:	01225 777234
School admissions:	01225 713010
School special educational needs:	01225 718095
School transport:	01225 713004
Social care – adults:	0300 456 0111
Social care – children:	01225 773500
Street care and cleaning:	01380 734849

## ROWDE PARISH COUNCIL

<b>John Hawkins</b>	<b>Chair; Planning</b>	<b><a href="mailto:rpc.jhawkins@gmail.com">rpc.jhawkins@gmail.com</a></b>	<b>07929 424781</b>
<b>Ivan Whittaker-Axon</b>	<b>Vice Chair, Roads and transport</b>	<b><a href="mailto:rpc.iwhittakeraxon@gmail.com">rpc.iwhittakeraxon@gmail.com</a></b>	<b>01380 728669</b>
<b>John Dalley</b>	<b>Sports &amp; Playing Fields</b>	<b><a href="mailto:jdtaxisdevizes@gmail.com">jdtaxisdevizes@gmail.com</a></b>	<b>07592 063789</b>
<b>Steve Munday</b>	<b>Village Hall Liaison</b>	<b><a href="mailto:stevemundy@me.com">stevemundy@me.com</a></b>	<b>01380 727598</b>
<b>Chris Stevens</b>	<b>Allotments</b>	<b><a href="mailto:rpc.cstevens010@gmail.com">rpc.cstevens010@gmail.com</a></b>	<b>01380 738438</b>
<b>Lisa Wills</b>	<b>Youth Co-ordinator; Social Media</b>	<b><a href="mailto:rpc.lisa.youth@gmail.com">rpc.lisa.youth@gmail.com</a></b>	<b>01380 730078</b>
<b>Yazmin Pullen</b>	<b>Parish Councillor</b>	<b><a href="mailto:yazminpullen@yahoo.com">yazminpullen@yahoo.com</a></b>	<b>07867 009567</b>
<b>VACANCY</b>			
<b>VACANCY</b>			
<b>VACANCY</b>			
<b>VACANCY</b>			
<b>Rebekah Jeffries</b>	<b>Clerk</b>	<b><a href="mailto:rowdeparishcouncil@gmail.com">rowdeparishcouncil@gmail.com</a></b>	<b>01380 720988</b>

## Wiltshire County Councillor deputising for Rowde

<b>Laura Mayes</b>	<b>Wiltshire Councillor</b>	<b><a href="mailto:Laura.Mayes@wiltshire.gov.uk">Laura.Mayes@wiltshire.gov.uk</a></b>	
--------------------	-----------------------------	---	--



# Rowde Parish Council



## YOUR VILLAGE, YOUR PARISH COUNCIL

- **WOULD YOU LIKE TO HEAR MORE ABOUT WHAT HAPPENS IN THE VILLAGE?**
- **ARE YOU PROUD OF YOUR VILLAGE AND WHERE YOU LIVE?**
- **CAN YOU SPARE AN EVENING A MONTH TO HELP SHAPE THE FUTURE OF YOUR VILLAGE?**

**PLEASE SEE THE PARISH COUNCIL UPDATE FOR MORE DETAILS.**

**AT THE LAST  
PARISH COUNCIL  
MEETING, THE  
FOLLOWING WAS  
DISCUSSED...**

**POSSIBLE NEW  
COUNCIL BUILD IN  
ROWDE**

.....

**UPDATE ON  
FOOTPATH FOR  
TANIS**

.....

**ROWDEFORD  
SCHOOL  
CONSULTATION**

## ROWDE PARISH COUNCIL

### Contact:

Rebekah Jeffries (Clerk)

[rowdeparishcouncil@gmail.com](mailto:rowdeparishcouncil@gmail.com)

tel: 01380 720988

Website: [rowdevillage.org](http://rowdevillage.org)

Meetings: Every second  
Wednesday of the month,  
7.30pm in the Village Hall.

# ROWDE VILLAGE SHOP

*Hello everyone,*

We would like to tell you about the changes we now have in place.

Our cash and carry supplier does not any longer do deliveries to the very small retailer.

This has caused us some problems in finding new stock agents.

We have now got TWO new groups to supply us and this means we can introduce new lines in the store. So do look in and see what new items we have. Prices are still competitive and two for one offers are still available, so some things will still remain the same but brand names could differ.

Wendy's sandwiches are back, with new labelling to comply with the health and safety regulations.



# RECIPE

## Caramel Apple Blondies

*These caramel apple blondies are soft and chewy and filled with apples, cinnamon and salted caramel sauce. They mix up quickly and disappear just as fast!*



---

## Opening Hours

Mon to Fri	7:30am – 6:00pm
Saturday	8:00am – 1:00pm
Sunday	9:00am – 11:00am
Bank Holidays	9:00am – 11:00am

---

We still need extra help so if you have some time on your hands, just a couple of hours would be good. The shop is a lifeline to so many villagers and is such an asset, so do come and have a chat if you can help in any way.

*Kind Regards,*

**Jan Barber and The Shop Team,**  
**01380 739800**

**[rowde.village.shop@btconnect.com](mailto:rowde.village.shop@btconnect.com)**

## Advertisers!

If you have a business and wish to have it publicised to over 600 households in the parish, or if you have a personal item to sell, then contact: **Julie Baker** on 07796690413 or by email at [juliebaker72@yahoo.co.uk](mailto:juliebaker72@yahoo.co.uk)

## Not receiving your mag?

If you don't receive a copy of the RVN, or have any other questions about its distribution then contact: **Jan Lindsay** on 01380 725455 or by email at [jan.lindsay@hft.org.uk](mailto:jan.lindsay@hft.org.uk)

## INGREDIENTS:

- 1/2 cup Unsalted Butter, melted
- 1/3 cup Granulated Sugar
- 1/2 cup Brown Sugar, lightly packed
- 1 large Egg
- 1 teaspoon Pure Vanilla Extract
- 1 cup All-Purpose Flour
- 1 teaspoon Salt
- 1 teaspoon Cinnamon
- 1 cup Chopped Apples, peeled and diced small (1 medium apple)
- 1/4 cup Salted Caramel Sauce

## METHOD:

1. Preheat the oven to 350°F. Prepare an 8"x8" baking dish by lining it with parchment paper, allowing the paper to overhang the dish by a couple inches on each side so that the bars can be lifted out after baking.

2. In a large bowl, whisk together the melted butter and the sugars until smooth. Add the egg and vanilla whisk together. Add the flour, salt and cinnamon and stir until just combined. Fold in the chopped apples.

3. Pour half of the batter into the prepared pan and spread it as evenly as possible - it will be thick. Drizzle the caramel sauce over top of the batter. Cover the caramel sauce with spoonfuls of the remaining batter, spreading it out as evenly as you can.

4. Bake for 40-45 minutes, or until the blondies are golden brown, and a toothpick inserted in the center comes out with only damp crumbs on it, but no wet batter. Set the pan on a wire rack to cool completely.

5. Once cool, the bars can be lifted out of the pan using the parchment paper and cut into 16 squares. Store in an airtight container at room temperature.

*(most ingredients are available from the village shop so remember to get them there, Ed)*



Solstice School of English  
**Recruiting Host Families  
 in Devizes &  
 surrounding villages**

**Spare Room?  
 Earn up to £7,500 per  
 year tax free**

hosting international students  
**£17 per student per night**  
 host between 2 to 4 students at a time  
 for between 3 to 5 nights per week

**Contact Olivia – 07340 906733**  
 olivia@solsticeschoolofenglish.com  
 www.solsticeschoolofenglish.com

**RD**

**RUDI DALBY**

**LOCAL LASTING POWER OF ATTORNEY  
 SPECIALIST**

**THINK:** who would arrange your care and finances for you if you were to lose capacity? Without LPA's in place this is not possible

**ACT NOW:** LPA's can only be put in place whilst you have the capacity to do so

- ~ Home and evening appointments
- ~ Professional, efficient and friendly personalised service tailored to you

Safeguard yourself, your family, your assets and your wishes for now and for the future.

**07791879774 rudidalby@gmail.com**

Contact me for queries and further information

**rudidalby@gmail.com**  
**07791879774**

**J F Chimney Sweep**

**Devizes**



Member of

'Institute of Chimney Sweeps'

Clean, Reliable and Professional service  
 Insurance certificate supplied with each sweep

**Standard Sweep £40**

Enquiries call James on **07849 423883**

Email: jfchimneysweep@outlook.com

Website: jfchimneysweep.co.uk

**Cloud Nine Therapies**

Based in Bromham with a lovely treatment room on New Road

Offers you a way to relax the mind and body

**Reiki** (pronounced ray - key) is a non-invasive therapy carried out whilst you lay fully clothes on a couch

**Ear Candles** are a great way to help relieve ear issues along with sinus problems and is a lovely relaxing therapy

**Hand Reflexology** a lovely relaxing therapy covering hands up to elbows (does exactly the same as feet, just done on your hands)

Other treatments available

Contact Trudi on 07810 – 374053

Trudis36@gmail.com

www.cloudninetherapies.co.uk

find me on Facebook, twitter or Instagram

(Trudi Speirs and Cloud Nine Therapies)

**DISCLAIMER**

Please note that the information given and views expressed in this magazine are generally as supplied by the contributors. Our personal comments may sometimes be expressed in the editorial on page 3 and if our views are given elsewhere, they will be credited as so. In addition, much of the local news items is sourced directly from other publications and the internet. We therefore apologise for any inaccuracies published but regrettably we have no control over this possibility happening. We will however publish any corrections notified to us as soon as possible.

**Alan Watters, Editor**

# February/March Worship in Rowde, Bromham and Sandy Lane

Services in St Matthew's, Rowde, *unless otherwise stated*

Currently, there is a service at 10am every Sunday; usually in Rowde but sometimes in Bromham.

**Everyone is very welcome at all our services**



Date/Time	Service
<b>Sunday 3 Feb</b> 8.00 am 10.00 am 10.00 am 6.00 pm	<b>Candlemas</b> Holy Communion BCP, Rowde <i>Holy Communion, Bromham</i> All Age Service with Junior Choir, craft, songs, small children's play area and refreshments (No Eucharist), Rowde Evensong BCP, Bromham
<b>Wednesday 6</b> 11.00 am	Holy Communion, Rowde
<b>Sunday 10</b> 8.00 am 10.00 am	<b>4th Sunday Before Lent</b> <i>Holy Communion (BCP), Sandy Lane</i> Holy Communion (Benefice), Rowde
<b>Sunday 17</b> 8.00 am 10.00 am 10.00 am	<b>3rd Sunday Before Lent</b> <i>Holy Communion (BCP), Bromham</i> Holy Communion, Rowde Family Service, Bromham
<b>Sunday 24</b> 8.00 am 10.00 am 10.00 am	<b>2nd Sunday Before Lent</b> <i>Holy Communion (BCP), Sandy Lane</i> Morning Worship, Rowde Holy Communion, Bromham
<b>Sunday 3 Mar</b> 8.00 am 10.00 am 10.00 am 6.00 pm	<b>Sunday Before Lent</b> Holy Communion BCP, Rowde <i>Holy Communion (Common Worship), Bromham</i> All Age Service, Rowde Evensong, Bromham
<b>Wednesday 6</b> 11.00 am	<b>Ash Wednesday</b> Holy Communion with Ashing (CW), Rowde Evening service with ashing, Poulshot Church 7:30pm.
<b>Sunday 10</b> 8.00 am 10.00 am	<b>Lent 1</b> <i>Holy Communion (BCP), Sandy Lane</i> Holy Communion (Benefice) (CW), Bromham
<b>Sunday 17</b> 8.00 am 10.00 am 10.00 am	<b>Lent 2</b> <i>Holy Communion (BCP), Bromham</i> Holy Communion (CW), Rowde Family Service, Bromham
<b>Sunday 24</b> 8.00 am 10.00 am 10.00 am	<b>Lent 3</b> <i>Holy Communion (BCP), Sandy Lane</i> Morning Worship, Rowde Holy Communion (CW), Bromham
<b>Sunday 31</b> 10.00 am 10.00 am	<b>Mothering Sunday</b> Holy Communion (Benefice) (CW), Rowde Family Service, Bromham
<b>Wednesday 3 Apr</b> 11.00 am	Holy Communion (BCP), Rowde

**Do come and explore our beautiful village Church or come in to sit quietly and pray. Please note that, although we try to avoid this whenever possible, times of midweek or special services may change due to unforeseen circumstances.**

**Please check the Church notice board for further information or contact the Administrator Sarah Bowler 07876142112.**

**Open the Book** – we have groups who go into both our primary schools to act out Bible stories. We are looking for more volunteers to join both teams. For more information, contact Revd Ruth.

### **Growing in Faith**

**Please contact Ruth Bray on 01380 859847 or [ruthbray@outlook.com](mailto:ruthbray@outlook.com) for more details.**

**Mothers' Union** Please contact Jo Partt for details: 01380 850435 [parttsofbromham@internet.com](mailto:parttsofbromham@internet.com)

### **Church Cleaning**

We need a few more people to join our cleaning group (even if you can only do one or two sessions a year) so if you would like to come and help please contact:

Jane Moss 01380 729160 [jmosscaudet@gmail.com](mailto:jmosscaudet@gmail.com)  
(Brass cleaning Rota)

Maureen Hiscocks 01380 725406

### **Choir**

Choir Leader: Gavin Moss 01380 719160

Choir Practise for Adults is on Thursday Evenings  
7.20 – 8.00pm

Junior Choir Leader: Portia Broomfield: 07514047878

Junior Choir Practice is on Thursday 6.45pm-7.20pm.  
New members are always welcome.

### **Bell Ringing**

We meet from 7.30pm-9pm on Friday evenings at St Matthews Church, please join us the more the merrier.  
Contact: Richard Heath [rich.p.heath@gmail.com](mailto:rich.p.heath@gmail.com)/  
01380 722379

### **St Matthews Cafe**

Coffee and chat. St Matthews Coffee Shop is open on Tuesdays from 10.30 am-12 noon. If you might be free to make drinks and host, please contact Caroline [carolineculley1@outlook.com](mailto:carolineculley1@outlook.com) or Revd Ruth

### **Flower Arranging**

3 & 10 Feb - Jayne Andrews-Wheeler

17 & 24 Feb - Jane Sartin

3 March - Jane Sartin

6 March - LENT - no flowers until Easter

20 April - Flower arranging for Easter

For further information please contact: Jane Sartin  
[j.ksartin@talktalk.net](mailto:j.ksartin@talktalk.net) or call 01380 727446

### **Contacts**

Priest in Charge: Revd Ruth Schofield 07738 858909.

Church Wardens: Michael Cornwell 01380 722855  
and Gavin Moss 01380729160

Administrator: Sarah Bowler 07876 142112

[sarahbromhamandrowde@gmail.com](mailto:sarahbromhamandrowde@gmail.com)

Safeguarding Representatives for St Matthews:

Revd Ruth Schofield: 07738 858909

[revrschofield@gmail.com](mailto:revrschofield@gmail.com)

Sarah Bowler 07876 142112

[sarahbromhamandrowde@gmail.com](mailto:sarahbromhamandrowde@gmail.com)

Find us at the website: [www.achurchnearyou.com](http://www.achurchnearyou.com)

Facebook page: Churches of Rowde and Bromham

### **Message from the Rectory**

Dear Friends,

Perhaps like me you were bemused by recent news features about planking being banned by Youtube. Planking – lying face down like a plank of wood and then sharing a picture on social media - is a craze that has got out of hand. Some people have been planking in dangerous high places, and there have been serious accidents as a result. The whole idea leaves me cold, and not just because my stomach muscles are rarely troubled by plank-like exercise; I am not a risk taker when it comes to heights. Other challenges have spread just as quickly on social media, memorably the ice-bucket challenge, and the selfie without make-up.

Copycat behaviour is not a new thing. Behavioural scientists carried out research in 2008 into the effect of group behaviour on the choices that individuals make. Unsurprisingly, it turns out that we tend to follow the crowd. The presence of litter or graffiti makes people who pass by twice as likely to commit a theft. And where other people are breaking the rules, by for example parking where they shouldn't, the research found that pedestrians were three times more likely to behave in antisocial ways.

So is there a way to turn this tendency around so that it becomes a virtuous circle instead?

Well, it turns out that good behaviour can be equally catching. We are much more likely to be nice to someone if the last person we interacted with was kind to us. Giving way to another driver, passing the time of day with a neighbour, watching for someone doing something well and telling them, all of these can start a chain reaction of happiness. Writer Andy Cope carried out research about smiling, thinking positively and being kind. It turns out that acts of kindness are just as infectious as antisocial behaviour. Happiness can be catching.

In his letter to the Hebrews, St Paul suggests that we should "consider how to provoke one another to love and to good works". I suspect that the craze for lying flat in spectacular locations will pass. However, I hope that we can all take part in a wave of sharing love. A small act of kindness can create a ripple that has a much more positive effect. Let's send it round our world.

**Revd Ruth**

St Matthew's Church Cafe

10.30-12

Open every Tuesday

All welcome

Fairtrade Ground coffee

Freshly made tea with choice of blends

Decaffeinated tea and coffee available

Choice of freshly made cakes

Tea/coffee and cake £1.50



## Magazine Submission Deadlines for 2019 (bi-monthly)

15th March

15th May

15th July

15th September

15th November

See also editorial on page 3

## WE NEED YOU!

Do you have some news to share or just have something to say about the village? If you can contribute to the content of your Rowde Village News in any way or would like to give us feedback (good or bad) or discuss any magazine issues then please contact: **Alan Watters** on 01380 724788 or by email at [watters.alan@gmail.com](mailto:watters.alan@gmail.com) or **Suzan Jackett** on 01380 729791 or by email at [suzijj@rocketmail.com](mailto:suzijj@rocketmail.com)



## Become a support worker and change someone's life

We have vacancies in Rowde, near Devizes, Wiltshire.

You don't need experience of support work or any special qualifications for this job as we will provide all the training you need. What matters most is a **positive attitude** and a real desire to support people with learning disabilities to **live the best life possible**.

**Full, part-time and waking night support workers: £7.83p/h**

(£7.38p/h between the ages of 18-20)

Annual leave and other benefits apply

**Relief support workers: £8.77p/h**

(£8.27p/h between the ages of 18-20) inclusive of annual leave

To find out more, call **01380 725455** or e-mail [hftwiltshire@hft.org.uk](mailto:hftwiltshire@hft.org.uk). Alternatively, you can apply online at [hft.org.uk/jobs](http://hft.org.uk/jobs)



# NEWS FROM Hft



A very Happy New Year to you all. Traditionally, we are around about the time for failing in all our New Year resolutions – some would argue that's it's better not to make them in the first place. If, however you have made a resolution to get a bit fitter, you may want to join the Great Rowde Walk which is to be organised this spring, so watch this space.

For keen gardeners, there will be a plant fair on 15th September, where many nurseries have agreed to attend; there will also be a bonsai display.

On 5th April there will be our yearly quiz with supper, date to be confirmed soon.

The Grow and Sow project continues to go from strength to strength. We have been hosting children from schools in Chippenham and Swindon who have been coming and working on the land with the people we support at Furlong Close, in partnership with Wiltshire Wildlife Trust.

The group has been engaged in hurdle making, a traditional way of making fencing to keep animals in. They have coppiced some hazel from woods in Chippenham owned by Wiltshire Wildlife Trust and used the wood to make the fencing.



There are more raised beds being built on the land, to aid people who use wheelchairs and those of us who are not as bendy as we used

to be! Feel free to come and have a look at progress and even join in if you feel like, you are most welcome.

There are future plans afoot to keep sheep here and there will be sessions running on how to care for livestock; apparently sheep are also good therapy animals.

If there are any schools in the area who are interested, we have an incubator for hatching chicks which they could borrow as we're not currently using it. If you wanted to hatch chicks but not keep them long term, they could be homed here at Furlong Close and visited. Contact me if you think you could make use of this.

The Produce Department is continuing to make jams, marmalades, chutney and shortbread and cheese straws which are for sale. We also produce very good quality made to order cakes, although you'd need to book in advance for this as it is very popular.

We have a new scheme where we welcome trainee police officers and PCSOs to Furlong Close to see what we do, meet people we support and learn about their roles in the community. We have two trainee PCSOs spending a day with us in March and we hope to welcome many more in the future.

## And finally.....

Some of you will of course have seen the sensationalist news locally about alleged abuse at Furlong Close. These reports are of an historical nature, did not involve any staff members and have been fully investigated by the local authority and closed. We have since had three visits from Care Quality Commission Inspectors and support from the Community Team for People with Learning Disabilities (CTPLD) at Savernake Hospital. We continue to make the improvements requested by the Care Quality Commission, alongside our 'business as usual'.

**Bye for now, Jan**

# ROWDE PARISH COUNCIL

**NEXT MEETING ON 13<sup>TH</sup> FEBRUARY 2019**

## Contact

The Parish  
Clerk

01380  
720988

[rowdeparishcouncil@gmail.com](mailto:rowdeparishcouncil@gmail.com)

Please join us at the next Parish Council meeting on Wednesday 13<sup>th</sup> February 2019, at 7.30pm in the Village Hall.

There will be presentations about

Community Led Housing &

The Sandridge Solar Farm.

Come along to find out more. Everyone is welcome to attend!

**Would you like help with  
your Garden?**

weeding, grass, borders, hedges, scrub clearance  
one-off or regular visits


your tools or mine


**Phone Helen on: 01380 859881 or  
07889274180**


## CLAIRE PERRY

*Working hard for the  
Devizes Constituency*

 Claire Perry MP  
House of Commons,  
London,  
SW1A 0AA

 01380 729358

 [www.claireperry.org.uk](http://www.claireperry.org.uk)

 [claire.perry.mp@parliament.uk](mailto:claire.perry.mp@parliament.uk)

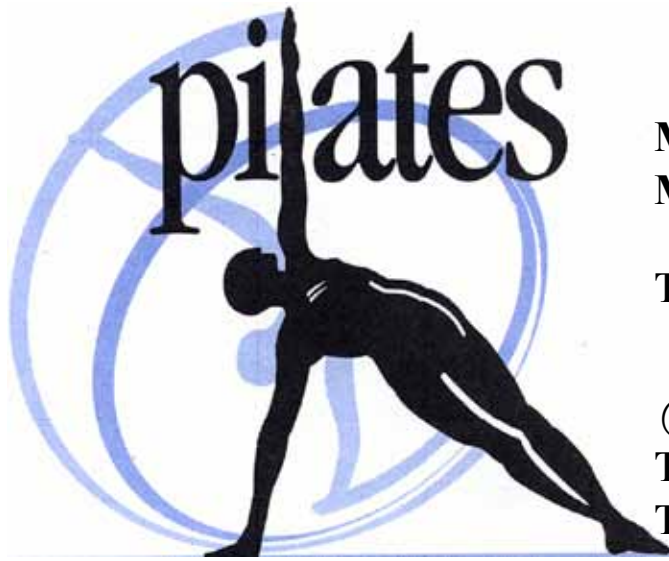


*I hold regular surgeries around the Constituency  
- please call or email to book an appointment*



# Move.Every.Day.

Now on INSTAGRAM - med.pilates



Currently running classes:

@ Hft, Rowde:

Mondays: 6.00 pm - Beginners

Mondays: 7.00 pm - Improvers/  
Intermediates

Tuesdays: 6.30 pm - Improvers/  
Intermediates

@ Dance Studio, Bath Road, Devizes:

Tuesdays: 9.30 am - Intermediates

Thursdays: 9.30 am - Intermediates

To book your place or for any enquiries please email [suzijj@rocketmail.com](mailto:suzijj@rocketmail.com) or call Suzan on 01380 729791

## Advertisers!

If you have a business and wish to have it publicised to over 600 households in the parish, or if you have a personal item to sell, then contact: **Julie Baker** on 07796690413 or by email at [juliebaker72@yahoo.co.uk](mailto:juliebaker72@yahoo.co.uk)

## Not receiving your mag?

If you don't receive a copy of the RVN, or have any other questions about its distribution then contact: **Jan Lindsay** on 01380 725455 or by email at [jan.lindsay@hft.org.uk](mailto:jan.lindsay@hft.org.uk)

## Seasoned Logs and Kindling Available



*Don't Shiver, We Deliver*

Call James on  
07970 781828

## Become a shareholder for Rowde Village Shop

Adult shareholders £10, Under 18s £5

Please fill in the form on the next page and drop your completed form and payment into the shop

Please complete an entry for each household member who is buying a share

Please make cheques payable to Rowde Village Shop

Many Thanks

# Tom Ashpole TREE

# SURGERY

All Aspects of Tree  
Surgery Covered



Including Hedgework And Stumpgrinding  
NPTC certified, Cert.Arb (RFS) Fully Insured

Tel 01380 699473 Mob 07929 898544

Email: [enquiries@wiltshiretreecare.co.uk](mailto:enquiries@wiltshiretreecare.co.uk)

Web: [www.wiltshiretreecare.co.uk](http://www.wiltshiretreecare.co.uk)

**Rowde Toddler Group**  
Anyone looking after preschool children  
welcome £2 per family

Toys, crafts, singing  
and games for children

Hot drink for carers

**Rowde Village Hall** Thursday 9:30am - 11:30am  
Term time only

## Rowde Primary Academy Playing Fields

If any organised group within  
Rowde village or its surrounds  
would like to use the Rowde  
Academy School Playing fields for  
specific training or events then  
in first instance please contact  
Judy Barlow on 01380 723991

### Rowde Village Shop Shareholder Form

Name	Address	Tel No	E-Mail	Amount

# SHORT STORY

## Trudi's Nightshift

by Darren Worrow

Alvaro plonked himself down at his desk and frowned at the paperwork heaped on top of it. The intercom irritated him. "There's a Trudi from section B on line two, Mr Dapplehorn."

He growled under his breath and flicked the third sheet of paper in the pile, bringing it to the top. "Is this the Trudi I had words with just last week?" He scanned the report which bore her name in red font.

"She's a handful alright," warned the secretary, "but says it's urgent."

Alvaro Dapplehorn bobbed his glasses as he rubbed his left eye, groaning louder. "Put her through."

There was a muffled hiss over the intercom, then a whisper, "is that Dapp....."

"Yes Trudi, what is it this time; late again, some feeble excuse?"

"I resent that," she replied, "I'm out on a job, actually. I have an issue, it's tricky to explain, you know, right, the thing, with the ermm..."

Alvaro sighed, and rudely interrupted, time was money. "I'm very busy Trudi; spit it out."

She retorted a snort laugh, "try telling him that!"

"Him?"

"Yeah, the client. Bad packaging boss," Trudi explained, "the item came loose, and now it's, well, it's gone back inside."

"Back inside?!" gasped the manager, "back inside the.....?"

"Yeah, you guessed it pixie-brain. Nothing I can do from here, you'll need to call engineering."

Mr Dapplehorn shook his head in disbelief, this was an extraordinary occurrence. He scanned the clock, "there's no time, it's nearly dawn. Have a flutter around, find something to prise open the aperture, climb inside and....."

"Are you having a laugh?" she caterwauled. Swiftly lowering her tone and distancing her voice from the mouthpiece, she muttered to herself, "is he having a flipping laugh, or what?" Again, she addressed her boss, "What if it closes and I'm trapped inside; am I getting danger money for this? Cos, I know I'm not!"

"Then why did you ask?"

"Last week, right," she complained, "you gave me that newbie to train, did I get a training bonus, did I?"

He ruffled his paperwork and sank into his soft-backed chair, swinging it slightly. "You're not a qualified trainer Trudi," he sighed, "I asked you to show the...."

"Shelia got training money when she only...."

"Shelia is a qualified trainer," he explained, grimacing at the sheet bobbing below his nose.

"When you can show you're dedicated and self-motivated, perhaps I will make you a trainer Trudi, but right now, going on this appraisal....."

"You think now is the time, to discuss this?" she snarled. "Cos you sure didn't when you wanted me to train...."

"For Saint Peter's sake!" Alvaro angered, "You did not train her, you only showed her the basics, which, to be honest Ms Grassyppearl, is about all you're capable o....."

"Right, that's about enough!" she knotted, "I am soooo out of here!"

"No!" demanded her boss, "there's a risk off choking, you will remain where you are and do as you are told!" He then softened his tone, "Trudi, please; what has become of you? You remember, you were but a sugarplum when you came in here, I took you under my wing, I showed you the magic."

"Magic, puh! You showed me the nightshift, you showed me minimum wage," she rattled.

Dapplehorn now rubbed his bottom jaw, "everyone is on nightshift, now, please, moving forward...."

"While you're grovelling with your fancy, nonsensical management speak," Trudi interrupted, "I've found a cotton swab, lodged it, okay? I'm going in. Darn, it stinks in here, stinks of rotting Alphabetti Spaghetti!"

"Have you got the shiny coin?"

"Of course, what do you take me for?" she ripped into him, "some fly-by-night?"

"Do be careful," cautioned Alvaro Dapplehorn. He rubbed his forehead this time, contemplating how he should relax his communication with the shop floor workers, give them some credit. It wasn't simple; a covert, often dangerous operation; there was efficiency, and productivity to consider, but also, the morale of the staff.

"Much you care, I'm not a flipping dentist, extractions aren't in my contract!" barked Trudi down the phone.

Alvaro Dapplehorn shook his head, simmered through the mountain of risk assessment forms and accident reports. "That is where you're very much mistaken Ms Grassyppearl," he murmured, "I do care about you, as I care about all the fairies employed here. Now get the darn tooth, place the coin, get back to Fairyland HQ where we will discuss your training money."

Through the phone the boss could hear the rousing of a sleeping youngster and the flutter of tiny wings. "Yeah, whatever!" sardonically exhaled Trudi, "mission complete; after this I'm going back to blowing away nightmares. Put an extra hour on my timesheet too, time and a half!"

***Do you have a favourite one page story? Send it in!***

# Local News



## RUNNING FOR CANCER CHARITY



Happy New Year to you all!

2019 is going to be a big year for me - as well reaching a 'certain' age in April, on 28th of that same month I will be running the Virgin London Marathon for a charity close to my heart, The Christie Hospital.

It has always been an ambition of mine and seems the perfect time as it is a decade since we lost my dear dad. He was under the care of The Christie and received some ground-breaking treatment, some of the first used in this country, as well as partaking in research for skin cancer, which has led to advancements in the way that cancer is treated. The availability of such innovative treatment, research and incredible care of the staff extended his life and helped him to tackle this terrible disease. More recently, my late mum also greatly benefited from The Christie's superb care and treatment.

The equipment, education, pioneering research and development by The Christie helps cancer patients across the country and it is an honour and privilege running to raise money for them.

I am targeting a total of £3000, the best birthday gift you can give is to please help The Christie's fight against cancer by sponsoring me – thank you.

Through Virgin Money Giving, you can sponsor me and donations will be quickly processed and passed to charities. Virgin Money Giving is a not for profit organisation and will claim gift aid on a charity's behalf where the donor is eligible for this. Here is the link:

<https://uk.virginmoneygiving.com/tara.wilson.virginlondonmarathon2019>

Alternatively, I hope to be placing collection boxes and sponsorship forms and collection boxes in the local pubs so please look out for them.

Please email me if you have any questions at [tara@tlegal.co.uk](mailto:tara@tlegal.co.uk)

***I really appreciate all your support and thank you for any donations.***

***Tara Wilson***

## BUS PASS IMPORTANT INFORMATION

Older person's standard Wiltshire concessionary bus pass - information about renewal.

As of 01 January 2019, not all bus passes are being renewed automatically. This is because there are approximately 20,000 passes in circulation that have not been scanned on a bus prior to renewal, indicating that the pass has not been used. In these cases, the passes will not be automatically renewed.

If your pass is not automatically renewed but you would still like to receive one to use in the future, please contact Wiltshire Council on 0300 456 0100 and we can arrange for your new pass to be issued.

Wiltshire Council regrets that any charges which may occur on bus journeys are non-refundable.



## **NEWS ON BREWS - SSSSHHHH. THE YEAST IS ASLEEP!**

Hi Everyone

Devitera had a busy lead up to Christmas and we were at every event possible selling, selling, selling! Christmas markets, outside shops, farmer's markets, and of course our taphouse open afternoon (thank you to everyone who came along).

Things were absolutely manic, and it gave me no time to brew beer. So by January the 1st we were almost drunk dry. I needed to urgently brew some more **Power Fail Pale Ale**, so were planning logistics just before Christmas with a view to brew first week back. Various ingredients arrived via the post, and I collected the grain, which was still warm, fresh from Warminster.

### **TEMPERATURES**

As a brewer I'm always thinking about temperatures. Are things too hot, too cold, or just what temperature are they? Various steps in the process are temperature sensitive. For example when "mashing" (creating a porridge like substance with grain and hot water) I have to consider the temperature of the grain, room, vessel (called a mash tun), and the hot water. 1 degree makes a massive difference at this point!

The brew went smoothly and as I transferred the wort (a sugary substance for the yeast to eat creating beer), then pitched the yeast, I went home feeling content. How wrong could I be!

### **WONDERFUL YEAST**

Yeast is such a wonderful animal! It is everywhere around us, and lives between -2 to 45 degrees. It can live in aerobic (breathing oxygen) and anaerobic (without oxygen) environments, and each strain has its own behaviour. Ales use one strain, whilst lagers use another. Bread is made from the same strain as Ale.

### **BACK TO THE BREW**

The brewhouse was cold and the temperature of the fermentation vessel dropped over night (and the yeast went to sleep). Now to give context this is a large vessel containing about 800 litres of soon-to-be



*A Rare Picture Of Glen Brewing*

beer. Once the temperature gets too cold, below 18 degrees, the yeast starts to slowdown/go to sleep, and drops to the bottom of the vessel inactive. As the yeast was just pitched it didn't have time to establish itself, so this happened almost instantly.

The challenge is how do you get such a large vessel warm again (ideally to 18+ degrees)? The answer is of course heaters. I have portable electric and gas heaters and direct them to the bottom of the vessel and wait (the hard bit). About 6 hours later the temperature had risen, and fingers crossed the yeast was awake enough to multiply overnight.

Next morning I arrived to see the temperature had risen, which meant the yeast was active and multiplying. This is the first stage of the fermentation process and lasts 24 hours.



*Brew Day*

Afterwards the next 3 days are spent eating the sugary "wort". This creates CO2 and alcohol! On the 4th day you have beer!

**BOTTLING, RACKING, & CONDITIONING**

So yesterday we finally got to bottle and rack (put the beer into casks) the beer. A hard day bottling by hand 1000 bottles. Producing 6 casks, and 5 "bag in a box" beers. We cleaned the brewhouse down, cleaned the fermenter of yeast, and made 40 boxes (cases) to move the bottles into.

Today I boxed the beer and moved it into my "warm room" where it will sit for 3 weeks (minimum) conditioning. The room is kept around 19 degrees so that the yeast will be active and properly condition the beer. This is a natural process and is similar to how you make champagne. Only beers that are "bottle conditioned" will go through this process, and all other beers are "force carbonated" (injected with CO2).

**FINALLY**

So after a week's effort, lost sleep (but not for the yeast), everything seems OK. The beer is bottled and in casks, it's conditioning, and it tastes great. Now time to start selling.

Cheers!

*Glen Upward*

*DEVITERA. BEER BEYOND BOUNDARIES*

*devitera.co.uk | facebook.com/deviterabeer | instagram.com/deviterabeer*

**LOCAL BANK TO CLOSE IN MAY**

The Devizes branch of Santander is a casualty of a decision by the Spanish-owned bank to slash its branch network by almost a fifth.

It will shut the Devizes office, which stands in a prominent position on the corner of St John's Street next to Barclays Bank, on May 16 as a total of 140 branches are shut.

The bank blamed the closures on changes in how customers are choosing to carry out their banking. It said branch transactions have fallen 2 per cent

in the last three years, while digital transactions have soared 99 per cent.

"We have had to take some very difficult decisions over our less visited branches," said Susan Allen, head of retail and business banking.

Until now Devizes has escaped the move by banks to close branches in smaller towns and still retains all of the big banks and several building societies.

The bank said its remaining network of 614 branches will be made up of larger branches offering improved community facilities and smaller branches using the latest technology to offer more convenience.

It plans to spend £55m over the next two years refurbishing 100 branches to fit its new branch vision.

"We continue to believe that branches have a vital role to play," said Ms Allen. "We are confident that following these changes we will have the right branch network to serve our customers' changing needs, and we expect the size of our network to remain stable for the foreseeable future."

Santander said it has consulted trade unions on the closures and will seek to find alternative roles for the 1,270 workers hit.

**MAN FLOWN TO HOSPITAL BY AIR AMBULANCE**

Devizes town centre was in gridlock following a crash at Dunkirk Hill on the morning of 25th January and the road was closed for much of the afternoon.

A traffic officer at the scene said they hoped the road would be open in time for school pick-up time. Specialist accident investigation officers put markers in the road and took measurements.



Police confirmed that two air ambulances were called to the scene and a pedestrian was given extensive medical attention by the side of the road before being airlifted to Southmead Hospital, Bristol, with extensive injuries.

A green Volkswagen Golf was involved in the accident which happened at about 8.45am. The car driver was unhurt in the accident which smashed the nearside of the

front window screen. The road was closed between the Cross Keys in Rowde and the top of Dunkirk Hill by Shanes Castle.

The accident happened just a few yards from the former Queens Head pub and the headquarters of Devizes Budo Club.

Police are appealing for dash-cam footage of an accident.

A police spokesman said: "A male pedestrian suffered serious injuries and was taken to Southmead Hospital by air ambulance.

If you were driving in the area and have captured footage which may be helpful to our investigations, please call 101 and quote log number 69 of January 25."

## TWO CARS INVOLVED IN CAEN HILL ACCIDENT



A further accident in the afternoon of 25th January added to traffic woes when two cars collided with each other on Caen Hill around 4pm. One driver lost control and landed up in the ditch.

## GENEROUS GESTURE BY BURGER VAN MAN



I support adults with physical and learning disabilities and regularly take four or five of them to see Swindon Town FC play their home games. They love their time there especially being able to have a good shout, mostly at the referee and the linesmen! On 1st January we were going to the

match and the lads (and one lass) stopped at the burger van outside the ground to buy their usual food and drinks. After they loaded up with burgers, chips and drinks, the lady serving them said "no charge" and nobody paid a penny for everything they got, "courtesy of the manager".

We didn't get a chance to properly thank the manager so I would like to do that now on behalf of all the Swindon fans living in Rowde. Thank you so much, it was a wonderfully generous gesture.

**Alan Watters**

## OBITUARY

Morris Barber of Rowde, formerly Somerton, Somerset, passed away suddenly after an illness bravely borne on 19th November 2018, aged 83 years. The funeral service took place on Tuesday 11th December at West Wiltshire Crematorium, Semington. Donations if desired are for Cancer Research UK and The Wiltshire Wildlife Trust c/o DJ Bewley Funeral Directors, 64 New Park Street, Devizes, SN10 1DP Tel 01380 728008

The Board Room

Reneleo House

46, New Park St,

Devizes

SN10 1DS

[sycamorecentre.devizes@yahoo.co.uk](mailto:sycamorecentre.devizes@yahoo.co.uk)

[www.careconfidential.com/devizes](http://www.careconfidential.com/devizes)

The  
SYCAMORE  
Centre

07762 382913

A Pregnancy Choices Centre

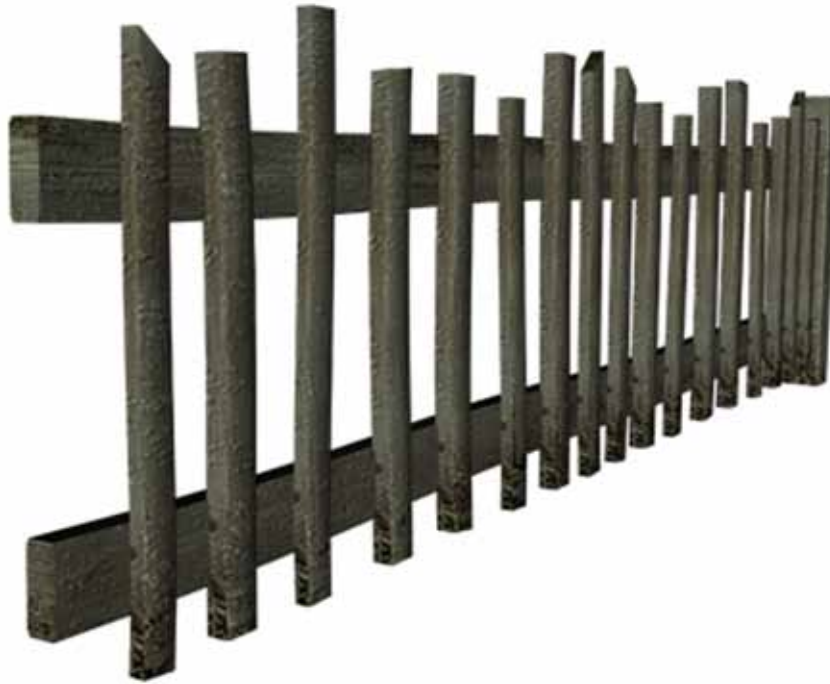
## ORIGINAL PET PORTRAITS



Colour or mono portrait of your pet by local artist Alan Watters. Original portrait. Limited edition prints and/or personalised greetings cards packages also possible. Original supplied framed or just mounted.

Call Alan on 07886870053 or Email [watters.alan@gmail.com](mailto:watters.alan@gmail.com) for a quote or for further information.

# A Neighbourhood Plan?



**A new neighbourhood planning support programme, worth £23.5m, has been rolled out to give more financial support to neighbourhood plans. The new programme started on 1 April 2018 and will continue to provide the resources and expertise that communities may need to plan for the future of their areas. Grants are available alongside professional planning support on key issues like housing, design and establishing neighbourhood forums.**

**In mid-March a new website was also launched, which provides further details about the programme. Tony Armstrong, CEO of Locality, said, “We believe that local communities are powerful and are the key to building a fairer society. The new neighbourhood planning contract will help thousands of local groups to create a neighbourhood plan, giving local people a direct say in what happens in their local area and helping every community to thrive.”**

**Neighbourhood plans are a great way for local people to decide where and what type of housing is built in your community.**

**[From Notes on Neighbourhood Planning, edition 21. December 2018. Published by the Ministry of Housing, Communities and Local Government].**

**Are you interested in steering where housing development takes place in Rowde? To embark upon a Neighbourhood Plan, we need to have a team of around 10 – 20 people. If you are interested in being a part of a Neighbourhood Planning group for Rowde and in shaping the future landscape of Rowde, please contact the Parish Clerk, 01380 720988, [rowdeparishcouncil@gmail.com](mailto:rowdeparishcouncil@gmail.com) in the first instance.**





## A thoughtful way to plan ahead

Save your family worry and expense with a Golden Charter Charter Funeral Plan. It's an easy, thoughtful way to plan ahead and beat rising funeral costs.



**Peace of mind for you and your family**



**Specify your wishes in advance**



**Protection against rising funeral costs**

**Contact us today to find out more:**

**Devizes 01380 728008**

**Office: 64 New Park Street, Devizes, SN10 1DP**



**BEWLEY**

Funeral Directors Limited

Charterbury and New Forest Branches

**Golden Charter**

Smart Planning for Later Life



# Another STEWSDAY

Wednesday 27th February 2019

TAKE A NIGHT OFF FROM COOKING?

At The Cross Keys Pub, Rowde – 6.30 pm

There will be a range of one pot meals on offer such as:

Beef Bourguignon, Lancashire Hotpot, French Cassoulet

Vegetable Curry, Chicken Tagine

A selection of puddings

Drinks to be bought at the bar

Raffle

ADULTS £8.00 / CHILDREN (Under 12) £4.00

**Places are limited**

Please ring Gavin Moss on 01380 729160 or

E-mail [jmosscadet@gmail.com](mailto:jmosscadet@gmail.com) to reserve your tickets



## Silkwise Catering – Eric Lepine

**Bespoke catering for events large and small:  
Weddings and Occasions for up to 180, Drinks and  
Dinner/Shooting Parties, Drop off Hot or Cold  
Buffets for family and other occasions, Wakes,  
Corporate Catering.**

**I can provide:** International Cuisine, Canapés, Speciality Barbecues, Giant Paella, Hog Roast, Finger Food.... Staff for all occasions

I am a French chef based in Seend with 35 years experience working in prestigious hotels and restaurants in Europe and England. I am also a Licensee.

Get on our email list for details of our regular themed Pop Up Restaurants

[ericlepine@silkwise.co.uk](mailto:ericlepine@silkwise.co.uk) 07787 557 599 [www.silkwisecatering.co.uk](http://www.silkwisecatering.co.uk)

# MEMORIES FROM ROWDE PRIMARY SCHOOL



**Circa 1924/5** - Back Row: Bob Morris, George Leaves, Ted Crouch, Reg Bull, Bob Boulter, Bert Hayter, Ern Perrett, George Hart, Jim Morris, Vic Boulter

Middle Row: Jill Seymour, Glad Seymour, Rene Giles, Daisy Reeves, Jess James, Bet Moss, Kath Dalley, May Harford, Stella Golding, Kath Amor

Front Row: Flo Bartlett, Phyllis Bates, Win Hurn, Kath Oatley, Addie Crouch, Dot Griffin, Joan Dolman, Marge Giles, Win Hayter



**Circa 1922/23** - Names unknown apart from, Ivy Oatley, 3rd girl from the left in the second row.

**Note:** If you can identify any of the pupils shown here or if you have any old Rowde-related photographs, please email them to me at [watters.alan@gmail.com](mailto:watters.alan@gmail.com). Thanks, Ed

**NEW YEAR...  
NEW YOU...  
NEW MORTGAGE?**

**IS IT TIME TO CHECK  
YOUR MORTGAGE IS  
WORKING FOR YOU?**

To compare the mortgages available, contact Selina for Independent Whole of Market Mortgage advice.

**T: 07471 860413  
E: kingmortgages@outlook.com**

Evening/weekend appointments available

**KING**  
MORTGAGES

*There will be a fee for the mortgage advice. The precise amount will depend upon your circumstances but we estimate that it will be £50.*

*Think carefully before securing other debts against your home. Your home may be repossessed if you do not keep up repayments on your mortgage.*



**ACTIVE PLUS**

**Are you age 60+?**  
Come and join our friendly exercise class and help maintain/improve your mobility  
(Exercises may be done seated or standing)

**Mondays**  
2.30pm – 3.30pm  
followed by coffee/tea and a chat at Rowde Village Hall

**Cost : £3.00**  
For more information contact:  
Yvonne 01380 723086  
yve@thegablesdevizes.co.uk




**Tracy Slade VTCT IFHB IIHHT IHBC**  
Call 07766137844 for your appointment

*Offering holistic, beauty and remedial treatments in a relaxed & friendly environment*

Up to the minute treatments available  
Event Days introduce new ideas products & treatments  
Quality skin care and beauty products for purchase  
Susan Molyneux, Environ, Jane Iredale, Advanced Nutrition Programme  
Gift vouchers also available

The Treatment Room, Blacklands Mill, Calne SN118PR  
Open Monday to Friday, day & evening appointments available

<b>Enhancing</b> Eyebrow Shaping Jane Iredale Make-up	<b>De-stressing</b> Thai Foot Massage Hot Stone Massage	<b>Holiday</b> Shellac Fake Bake GOLD
<b>Maintenance</b> Waxing Monu Aromatic Facial	<b>Pampering</b> Pamper Packages Manicure Pedicure	<b>Therapeutic</b> Hopi Candle Electrolysis
<b>Wedding</b> Wedding Make-up Eyelash Extensions	<b>Anti-ageing</b> Renu Lift Facial Environ Vitamin A	<b>The Latest</b> Minx Nails Bamboo Massage

www.beechwoodbeauty.com - enquiries@beechwoodbeauty.com  
@BeechwoodBeauty - facebook.com/BeechwoodBeauty

**Easterton Vehicles Ltd.**

ATA Automotive Technician Accreditation  
Master Technician AT 1803087958

**Independent  
BMW, Mercedes, VW, Audi  
and Skoda Specialists  
at less than 1/2 dealer prices.  
All Makes Mot's & Servicing.**

Award Winning Knowledge Of Modern Motor Vehicles  
Champion Bright Spark 2006 - 2nd  
Auto Trade Technician 1999 - Winner

**John Kyte, Director**

Unit 1 Hillcroft Farm, 5 Easterton Sands, Devizes  
Wiltshire, SN10 4PY  
Call: 01380 812192 or 01380 816436  
www.eastertonvehicles.com

# ANY BIN WILL DO!



&



Keep Britain Tidy, Chief Executive said recently:

“Our most recent research tells us that people see dog fouling as, by far, the most unacceptable and dirtiest type of litter, and the biggest concern in environmental quality.”

There is a risk to health from uncollected dog faeces. Toxocarisis is caused by roundworm parasites in unwormed dogs. In rare cases, the roundworm larvae can infect organs such as the liver, lungs, eyes and brain.

All dog waste should be picked up, even when walking in fields and woods. There is a danger to cattle if dog waste is left on grass which is then cut and given as feed.

This is your community; your children.

Please be respectful of their school and play spaces; keep all dogs out.

*From Rowde Parish Council*

## CHARLES S. WINCHCOMBE & SON LTD.

Est. 1932

FOURTH GENERATION INDEPENDENT FAMILY  
FUNERAL DIRECTORS & MEMORIAL CRAFTSMEN

*Incorporating Thomas Free & Sons of Marlborough Est. 1875*



[www.wiltshirefunerals.co.uk](http://www.wiltshirefunerals.co.uk)

[wiltshirefunerals@gmail.com](mailto:wiltshirefunerals@gmail.com)

Marlborough:

01672 512110



**BRAMM**  
ACCREDITED COMPANY

Devizes:

01380 722500



# The Owl

## New Road, Bromham



LIVE MUSIC THE LAST SATURDAY OF EVERY MONTH

**Saturday 23rd February**

**MIKE BARHAM**

'Mighty' Mike Barham is possibly the tallest singer songwriter in the West Country.

**Thursday 7th March**

**CHARITY QUIZ NIGHT**

Raising money for **Bristol Children's Hospital**  
£2 per person | Teams of upto 4  
Registration from 7pm for 8pm start

**Saturday 30th March**

**JAMIE R HAWKINS**

An evening of acoustic originals (with the odd cover thrown in for good measure).



## The Owl Cafe

**TUESDAYS + WEDNESDAYS**  
**10AM - 1PM**

Come for a tea/coffee/soft drink and a choice from a selection of sweet and savoury treats.

Homemade soup, Jacket potatoes, Baguettes and much more to choose from with plenty of scumpious cakes to choose from supplied by Napes Cakes.



**01380 850671**

**facebook.com/TheOwlBromham**



## Canal Boat Rental

From the Wharf below  
Caen Hill Locks

**www.foxhangers.co.uk**

Choose from our fleet of 14 modern narrowboats, all built new at Foxhangers

Visit our website for complete details of our

**Weekend Breaks**

**Midweek breaks**

**Weekly Breaks**

*More to Foxhangers than boat hire!*

**Bespoke boat building/Re-fits/Painting**

**All aspects of boat engineering**

**Chandlery**

**Tel: 01380 828795**

**4 self-catering units and a campsite**  
available at Lower Foxhangers  
Visit [www.foxhangers.com](http://www.foxhangers.com) for details



**WHISTLEY CANINE COUNTRY CLUB  
AND CATTERY**

**Our Modern Luxury Heated Cattery  
For Tiny Tigers is Now Open**

Luxury Holiday Venue For Our  
Canine Friends

Spacious Suites Under-Floor Heating  
Day Care Facility Inspections Welcome

Potterne Devizes

01380 738189/726330

Please see our website for more details

[www.whistleykennels.co.uk](http://www.whistleykennels.co.uk)



Locally Sourced Food  
Children's Play Area

Spectacular Views  
Miniature Ponies

Delicious Home Made Ice Cream made using our own milk fresh from the farm

**FARM CAFE & ICE CREAM PARLOUR**

Open 7 Days a Week 10am - 5pm (Sunday 4pm)

**Cooked Breakfasts**  
served from 10am - 11.30am

**Full Lunch and Snack Menu**  
served from 12noon - 3pm

**Children's Menu Available**

**Ice Cream Available All Day**

**Homemade Cakes and Cream Teas**

all our food is freshly made from local produce

Lower Farm, Devizes Road, Rowde, Nr Devizes SN10 2LX  
Tel: 01380 829666 | www.rowdeycow.co.uk

## 4CHILDREN




Devizes Community Children's Centre  
Town & villoges south

What your 4Children Children's Centre offers

Groups and services that run from your local centre are designed for families with children under five. Your centre can provide you with information or advice on all aspects of family life, so drop in to visit us or call one of our staff team.

*For further information or to get involved, telephone 01380 739835*



Sure Start | Wiltshire Council | 4Children



# TOWNSEND BARN NURSERY

## POULSHOT



For pre-school children age 0-5 years  
Open all year from 8am - 6pm

The Nursery makes full use of its rural setting, and focuses on outdoor play as well as indoor activities. Home cooked food provided.

Children's gardens & greenhouse | Vegetable plot  
Tennis court | Nature garden | Outdoor wood oven  
Swimming with Parents | Sandpit | Outings & Trips

For further details please contact:  
01380 828141 / 07976 899946

[www.townsendbarnnursery.co.uk](http://www.townsendbarnnursery.co.uk)

## The Tranquil Moment

HEALTH & BEAUTY CLINIC

Unit 2 Manor House Yard, Poulshot Road, POULSHOT,  
DEVIZES, WILTSHIRE SN10 1RY

TELEPHONE: 01380 828297

[www.tranquilmoment.co.uk](http://www.tranquilmoment.co.uk)

email: [tranquilmoment@live.co.uk](mailto:tranquilmoment@live.co.uk)

**Decleor facials,  
microdermabrasion, massage,  
sports massage and injury clinic,  
shrinking Violet fat loss body wraps,  
CND shellac and Brisa Lite  
sculpting gel nails, CND manicure  
and pedicure, Apilus electrolysis,  
CACI non surgical face lift,  
Decleor and CND stockist**

*Please call Jo at The Tranquil Moment Health and  
Beauty Clinic to make an appointment*

**Call us or follow us on Facebook for up  
to date offers and news**

## Adams Renovations

Property Services



[www.adamsrenovations.co.uk](http://www.adamsrenovations.co.uk)

**For All Your Property Requirements:**

Painting, Decorating (interior & exterior)

Tiling & Flooring

Paving, Decking & Patios

Guttering & Facias

Light Building Works

Repair & Renovation Work

Bathroom Specialists

Competitive prices from an honest & reliable worker.

No job too small. All areas of Wiltshire coverd.

Fully insured. References available.

Email: [info@adamsrenovations.co.uk](mailto:info@adamsrenovations.co.uk)

Telephone: 01380 500549

Mobile: 07725 638165

## Avalon Lodge Bed & Breakfast

*....more than just a place to stay*

If you need somewhere for friends or family to stay whilst visiting  
we are here to help.

We offer:

- large, double glazed, centrally heated, en-suite rooms
- hotel comfort mattresses
- luxurious bedding
- well stocked silent fridges in each room
- free Wi-Fi
- ample off road parking
- delicious full English breakfast  
using local produce and eggs from our own hens
- exclusive guest lounge with guide books & games
- free electric point car charger
- walking distance of village

With prices from £65 per night our AA 4\* Gold service is here for you

Call 01380 728189

or email [stay@avalonlodge.co.uk](mailto:stay@avalonlodge.co.uk)  
for bookings or further details

Nick & Jenny

Avalon Lodge, Devizes Road, Rowde, SN10 2LU

[www.avalonlodge.co.uk](http://www.avalonlodge.co.uk)

Trip Advisor Certificate of Excellence 2013, 2014, 2015, 2016

## Wiltshire Mind



Your Local Mental Health Charity

**Depressed? Anxious? Stuck? Grieving?  
Stressed? Not Managing?**

### **COUNSELLING SERVICE**

**A safe, confidential and personal place to  
talk, and help you to move forward**

**A low cost counselling service in the  
community for all**

**Initial Assessment Free of Charge**

**For further information please contact:**

**Wiltshire Mind**

**24a High Street**

**Melksham**

**SN12 6LA**

**Email: [counselling@wiltshiremind.co.uk](mailto:counselling@wiltshiremind.co.uk)**

**Phone 01225 706532**

**Reg Charity Number: 1113751 Reg Company Number: 5498430**





Service covers all aspects of chimney care from regular maintenance to sweeping, camera inspections and testing.

# SOOTY & SWEPT

Service Open Fires, Wood Burners, Multi Fuel Stoves and AGAs. Can deal with specific problems such as birds nest removal and cowl fitting.

Competitive rates and a friendly professional service.

Call Will on

07789 007418

facebook

## Vine Cottage B&B

26 Bunnies Lane, Rowde

Trip Advisor certificate of excellence again for 2017/18

Ensuite Rooms from £70 single and £80 double

Our own hens eggs in the all-inclusive cooked breakfast. Also use of guest lounge, sauna, Wi-Fi, garden and POD Point Electric car charger, included in room price.

Mention Rowde mag for 5% off, returning guests given 10% deduction on Telephone or direct email bookings only.

Tel: Mary and Ben Bentley on 01380 728360 or email: [vincottagebb@btinternet.com](mailto:vincottagebb@btinternet.com)



Or book on-line via web-site [www.vincottagebb.co.uk](http://www.vincottagebb.co.uk)

or FaceBook page,

[www.facebook.com/vincottagebb](http://www.facebook.com/vincottagebb)

## Mobile Library Service (note new day, time and location)



A mobile library van will visit Rowde (Maundrell Close) on a Thursday every four weeks, from **9.30am to 10am**.

You can borrow books for adults and children of all ages, plus story tapes/CDs. It is also possible to reserve items that are not available on the van. The library van is wheelchair accessible.

For more details on Wiltshire Library Service, log on to: [www.wiltshire.gov.uk/libraries](http://www.wiltshire.gov.uk/libraries)

### What you will need:

Either a Wiltshire Library card or proof of your name and current address (for example an allowance book, bank/building society statement, driving licence or official bill/invoice).

Discover your mobile library  
[www.wiltshire.gov.uk](http://www.wiltshire.gov.uk)



The Mobile Library  
stops at

Maundrell Close, Rowde

at

9.30am - 10.30am

on

Thursday

Feb 14, Mar 14, Apr 11, May 9

For more information visit the website  
[www.wiltshire.gov.uk](http://www.wiltshire.gov.uk)

Wiltshire Council  
Where everybody matters



# THE CROSS KEYS

Kelly and her team welcome you to our village pub, serving great local beer, and home cooked food including Homemade pizzas, burgers, daily specials, kids menu and mature menu (age 60+)

## Opening Hours

Monday 5-11pm

Tuesday - Thursday 12-11pm

Friday & Saturday 12-12

Sunday 12-11pm

Serving food:

Monday 6-9pm

Tuesday - Saturday

12-2.30pm & 6-9pm

Sunday 12pm -2.30pm

Call 01380 739567 to book

Skittle Alley available for functions

Facebook page 'The Cross Keys'



## JOHN STUART FUNERAL SERVICE LIMITED

18 The Britox  
Devizes  
Wiltshire SN10 1AJ  
Tel: 01380 729459



Funerals Arranged  
24 Hour Service  
Private Chapel of Rest

## ROWDE VILLAGE



**Have you visited the village website yet? You will find it at [www.rowdevillage.org](http://www.rowdevillage.org)**  
(Amongst many other things, you can see your Rowde Village News in glorious full colour!)

Please note that our Rowde Village website manager is Rebekah Jeffries and she can be contacted at [rowdeparishcouncil@gmail.com](mailto:rowdeparishcouncil@gmail.com) or 01380 720988.

# Trevor Hale

NPTC Certified (arb) Fully Insured

City &  
Guilds  
NPTC



## Tree Surgery

Felling ▪ Reductions ▪ Dismantles  
Chipping ▪ Stumpremoval ▪ Hedging

Very Competitive Pricing

07737 934777

[www.wiltshiretreesurgery.co.uk](http://www.wiltshiretreesurgery.co.uk)

Seend Cleeve

*arts*  
together ...ageing creatively

Is an award-winning local charity, seeking to reduce loneliness and isolation and in doing so improve health and well being for vulnerable elderly people through participation in the arts. We run weekly sessions in Pewsey, Marlborough and Devizes and are looking for friends and supporters to join us in fundraising, raise local awareness and help at our sessions.

### COULD YOU PLEDGE SOME TIME IN 2017 AND HELP BY?

- **Businesses:** Adopting us as your 'Charity or Choice' or supporting us in other ways?
- **Individuals:** Help spread the word in your community, join our 'friends' scheme, run a fundraiser for us, help promote our work?
- **Groups:** We have plenty of ideas and resources to support groups involvement

For more info about our activities or being involved

[liz.lavender@artstogether.co.uk](mailto:liz.lavender@artstogether.co.uk) / 07780860922

[www.artstogether.co.uk](http://www.artstogether.co.uk) Registered Charity 1109432

## HAIR AT HOME ROWDE

Hairdressing salon style in Rowde or  
mobile, you choose!

Contact Louise Allan on 07811 948 374  
or Email [louiseallan\\_1@hotmail.co.uk](mailto:louiseallan_1@hotmail.co.uk)

Very experienced ex salon stylist.

Cutting, families, colouring,  
perming, children welcome.



HAIR AT HOME  
experience a little hair magic

## Rowde Village News Pledge

The Rowde village News is independent of political parties, private interests and government. Our policy is to provide readers with a complete, fair, accurate and balanced news and information service.

Although we are a voluntary run, nonprofit making publication we still do our best to adhere to the Press Complaints Commission's Code of Practice. While we try hard to avoid mistakes, some errors can occur during the part time and hectic process of producing one of Wiltshire's largest and most regarded (apparently, from feedback received over recent years) monthly village magazines.

Our policy is to correct errors of fact as soon as possible and, where appropriate, apologise. If you find an error of concern, please contact the editor (contact details on page 3).

Thank you for your continued support and understanding.

**Alan Watters, Editor**

# The George and Dragon

Tel: 01380 723 053 - Email: gm@thegeorgeanddragonrowde.co.uk

## Winter Events

### Valentines Day - Thursday 14th February

Come and spoil the one you love!! 5 course tasting menu £75pp

### Delicious Gin, Anti-pasta & Pudding Tasting

Friday 22nd February @ 7pm

Come and try 5 various Gins accompanied with Anti-pasta boards, English cheeses & selection of our new puddings £35pp

Book ASAP!

### Amazing Sunday Roast: Midday to 4pm

Bring the family and join us a delicious 3 course Sunday Roast at £22.50... We always have rare beef, leg of lamb, pork loin & ½ chicken  
Don't forget the Sitting room with sofa & TV is ideal for private parties

### Mothering Sunday Countdown is on!!

Yes we are thinking about that special lady in our life.....

Our Set menu is £35pp & kids £17.50

Sunday 31st March Midday & 2.30pm sitting

*Rowde Village special offer: a glass of prosecco on arrival  
– pls mention this on booking...*

### “George Goes Out...”

Don't forget we do superb outside catering!!!

From intimate dinners to large parties...

Pls visit [www.georgegoesout.com](http://www.georgegoesout.com)

Please can I take this opportunity to thank everyone who supported the pub during the festive season...! We had a wonderful Christmas and thoroughly enjoyed looking after you, especially the Christmas Carol Supper, when we managed a whopping 95 covers in one sitting (that's a record)!!!

And finally, massive thanks to Shelly, Amy, Tombo, Leah & all the G&D staff for their hard work!!!

As always we look forward to seeing you at the pub  
If you are new to the village please pop in and say hello

**Chippy, Tom & The G&D Team**

# GAIGER BROTHERS LTD

## Building Contractors

6 Northgate Street, Devizes, Wiltshire SN10 1JL

Tel: (01380) 722412

Fax: (01380) 727890

## The Wiltshire Bobby Van Trust



Registered Charity No 1153790

The Wiltshire Bobby Van Trust provide a Courtesy Home Security Service for elderly, vulnerable and disadvantaged people living in Wiltshire, who have become, or are at risk of becoming victims of house crime or domestic abuse.

Our operators will carry out a full security and fire risk assessment before fitting the appropriate security devices. If you are over 60 or vulnerable due to a mental or physical disability and don't feel that you have adequate home security please contact us to arrange a visit.

Tel No: 01380 861155 Email: [bobbyvan@wiltshire.police.uk](mailto:bobbyvan@wiltshire.police.uk)

[www.wiltshirebobbyvan.org.uk](http://www.wiltshirebobbyvan.org.uk)



## BEWLEY

Funeral Directors Limited

*Our family are here for your family*

**Devizes local family funeral service EST. 1970**

**Three generations of experience, personal values and professional service**

24 Hour Service | Home Visits | Simple or Bespoke Funerals | Pre-paid funeral plans | memorials

**Devizes 01380 728008**

Office & Chapel: 64 New Park Street, Devizes, SN10 1DP

Over 100 reviews at [www.bewleyfunerals.com](http://www.bewleyfunerals.com)





# **H.F. STILES & SON LTD**

Fourth generation family butchers

Retail butchers established over a century

**Beef, Pork and Lamb sourced from local farms and  
slaughtered at our own abattoir ensuring that we know  
exactly where your meat comes from**

**All beef hung and matured for 3 weeks**

## **This months special offer – only £35**

**3 1/2 lb Beef Topside Roasting Joints**

**8 Lamb Chops**

**2 Chicken Breast Portions**

**2 x 1lb Diced Stewing Beef**

**10 Homemade Traditional Pork Sausages**

**½ Dozen Free Range Eggs**

**An average of only £1.35 per meal**

**All packed and labelled to your requirements**

**If you would like anything packed or butchered differently then  
please ask and we will be more than happy to help**

**Follow us for up to date monthly offers**

**<https://www.facebook.com/stilesbutcher>**

**Please phone with any orders or enquiries that you may have and  
to find out about our weekly delivery service**

### **Opening Times**

**Monday: 8am – 1pm**

**Tuesday - Friday: 8am – 5pm (closed between 1pm and 2pm)**

**Saturday: 8am – 1pm**

**22 High Street, Bromham, Chippenham,  
Wiltshire, SN15 2EX**

**Telephone: (01380) 850342**

# APPLE PIE DOES NOT NEED SUGAR

After Christmas about two years ago Francis tested positive for Type 2 Diabetes. My immediate response was a serious low/no sugar diet. In a remarkably short time he lost five kilos and went back to 'normal' with no medication. Hard on someone who likes cakes and a daily pudding! Try these:

## FRUIT PIES

Any fruit pie made with ordinary short crust pastry does not need sugar, not even sprinkled on the top! Fruit can easily be sweetened using cheap ordinary Saccharin, or an alternative. |Fruit in batter is good too. Lemon sponge soufflé needs about 4 Saccharin tablets dissolved in the lemon juice. Crumble needs no sugar depending on the fruit used; add just one teaspoon of sugar for a touch of luxury.

## CAKES

I make a rich fruit cake with Saccharin dissolved in a cup of cold tea. Your friends won't notice the difference. Our grandsons devour it! For mincemeat, jams and marmalade use only half the normal amount of sugar. It still sets if you continually test a sample on a cold saucer in the freezer first.

## VICTORIA TYPE SPONGE

Without sugar is a disaster! Try beating up 3oz Margarine, 1½ oz of sugar, and only the yolk of one egg. Whip the egg white as for a meringue and only then fold it into the cake mixture with 5oz of Self-raising flour and some milk for a single layer of acceptable sponge.

***Have fun! Enjoy your cakes and stay healthy.***

***Jill Chadwick***

For more advice on diet for diabetes ring 0345 123 2399 or visit [www.diabetes.org.uk/guide-to-diabetes/eating-with-diabetes/what-is-a-healthy-balanced-diet](http://www.diabetes.org.uk/guide-to-diabetes/eating-with-diabetes/what-is-a-healthy-balanced-diet)

# The Arts Society North Wiltshire

We are a friendly group who enjoy hearing about a wide range of arts based subjects. Many people from this area and beyond appreciate them – do come and join us!

We meet in the Assembly Hall, Melksham from 10am for coffee and chat and 11am for a one hour lecture.

Forthcoming ones include:

**6th February - "Hidden Canvasses – Street Art & The City" by Doug Gillen**

**6th March - "Aqua Triumphalis: Power, Pageantry & The Thames" by Peter Warwick**

**3rd April - "A Child of Six Could Do it": Cartoonists views of Modern Art by Barry Venning**

Annual Membership: £42 (10 lectures) Visitors: £7

For more information please contact Maggie Keith on: [maggienkeith@gmail.com](mailto:maggienkeith@gmail.com)

# SKIP HIRE

4yd / 6yd / 8yd Skips

Green waste / Hardcore  
/ Soil / Timber / House &  
Garage clearance

Scrap metal skip  
available

Phone for all  
requirements

07547 683368



**PLEASE  
REMEMBER**  
to mention where  
you saw the  
advert when you  
contact any of  
our advertisers!

*Theodora Wildcroft*

Wild Yoga

ROWDE VILLAGE HALL

WEDNESDAYS 10.30 AM - 12

Full term, concession and drop-in rates available.  
Beginners and experienced yogis are welcome.  
Call or email for bookings and further details.



theo@wildyoga.co.uk 07818401110 www.wildyoga.co.uk  
Rebalance mind, body and soul with a smile.

## Martina's Professional Cleaning Services

Is cleaning and ironing taking  
up your valuable time?

We guarantee the best price  
for the perfect job

Regular Cleaning

Spring Cleaning

Office Cleaning

Oven Cleaning

Window Cleaning

Carpet Cleaning

Ironing

Fully insured and absolute  
privacy assured

The same regular cleaner guaranteed

Call Martina on 07859818198



# LETTERS

## APPEAL FOR SUPPORT

Hi Alan and Suzi,

Swimming the English Channel! Feeling the fear and doing it anyway. My son, Henry Barter and I from the village will make up two relay teams in July, made up of students aged 13-15, parents and staff from Lavington School in Wiltshire.

No wetsuit, just positive mental attitude and endurance needed for the 14-degree and 28-mile swim. Known as the swimmers 'Everest' it will not be easy, however we all have an extra incentive to complete the swim to raise money for the Cure Leukaemia charity, and show support to one of Lavington's students currently fighting the illness.



To help us in our endeavour if you know of any local businesses who want to get behind the swim by sponsoring us, let me know! This will help make this challenge accessible to all by reducing costs to students participating, contributing to the costs for equipment, training, qualification etc. by using 35% of monies raised and help this excellent charity @cureleukaemia. We would in return be able to offer you a promotional logo on team kit and the opportunity to have your business promoted through all our fitness and funding raising adventures this year. Already the challenge has attracted media attention.



It's a massive endeavour for our teenagers and any support we can get would make a big difference to their success. For a business to sponsor or find out more, get in touch with me Kirstie Barter at [kirstiebarter77@gmail.com](mailto:kirstiebarter77@gmail.com).

**Kind regards,**  
**Kirstie Barter**

## WE ARE MOVING!

As from the 2nd of March 2019 Beechwood Beauty will be relocating to The Treatment Room, Blacklands Mill, Calne SN118PR - new contact number 07766 137844

**Regards,**  
**Tracy**

## APOLOGY FOR ANY DISTURBANCE

The owners of 25 Scholars Park in Springfield Road wish to apologise for the disturbance to residents due to the house alarm going off uncontrollably around the 6-9 January.

We appreciate that this must have been very annoying and we are very sorry about it.

The alarm has been serviced and will be repaired/replaced as deemed necessary.

**Regards,**  
**John and Lesley Henderson**



Furlong Close,  
Marsh Lane, Rowde,  
Devizes, Wiltshire  
SN10 2TQ

Reg Charity No 313069

### Duvet Cleaning Service

Duvet too big for your washing machine?  
Let us do it for you!

We can also launder sleeping bags, throws, blankets, football/rugby strips (discount for whole teams)

### Gifts

We have a large range of Handcrafted Gifts from Jewellery to Bird and Bug Houses, handmade cards to personalised gift boxes

### Produce

We make a wide range of Jams, Chutneys and Marmalades  
Orders taken for Celebration Cakes or Sugar Craft Flowers  
We also sell delicious Shortbread, Handmade Chocolates and many other seasonal treats.

### Rowde Orchard Apple Juice

We produce our own Apple Juice from the orchards here at Furlong Close. Food miles - ZERO! Give it a try!

### Marsh Hall / Catering

A beautiful wheelchair accessible space to hire, with or without catering, for Meetings, Parties, Training Courses, etc

**For all the above please call in and see us  
or contact us on 01380 725455**

## FREE CLASSIFIED ADS

### FOR SALE

6x6' Closeboard fence panel as new but surplus to requirements £10

Call or txt Tristan: 07972385172

### HOLIDAY COTTAGE FOR RENT

South Cornwall holiday cottage to rent.

Two double bedrooms with estuary views. Many nice beaches nearby. Ferry to Plymouth also nearby. Walk to the village, pubs, shops, café, etc.

For details phone 01380 729319.

### FOR SALE

I have several items in excellent condition:

Mini Wi-Fi extender multi kit (works with ALL Broadband providers)

Pentax Binoculars 10x24 UCFV, as new

Pulsar wristwatch in working order

Small Carriage Clock in working order

Beautiful Owl from the Leonardo Collection

Good size porcelain Shire Horse

Camera tripod

Child's Car Seat

Printer Cartridges for Epson Stylus Photo R800/R1800, sealed, unopened

Solar Powered LED Gutter Light, unused

Large selection of hardback Art books

Large collection of Lilliput Lane cottages

Several ornamental Elephants (wood, brass, Onyx and other materials)

- various sizes

Framed paintings, engravings and prints

Email or text me for lists, photos or prices

Alan, 07886870053 watters.alan@gmail.com

#### How to advertise here for FREE:

If you live locally and have an item to sell then just contact Julie on juliebaker72@yahoo.co.uk or telephone 07796690413, giving a brief description of the item, the amount you would like for it, and a contact telephone number (name optional). 'Wanted' ads also accepted. **Note - private advertisers only**

**Please also let us know whether your item sells or not so that we can either remove it or keep it in for subsequent months**

## Dolman Audio Visual

Berhills Lane Farm, Sells Green, Seend

**provides**

**reliable and effective repairs & maintenance to all makes of TV, Hi-Fi & video equipment**

by knowledgeable and friendly technical staff at our well-equipped service department

Please contact

**Maggie or Peter**

**Phone/Fax: 01380 828524**

**Email: peterdolman@btconnect.com**

## Would you like to help change someone's life?

Are you over 18 and would like a job? Or are you recently retired and would still like to do something rewarding on a full or part time basis?

Do you have a positive attitude and a real desire to support people with learning disabilities to live the best life possible?

**Hft in Rowde currently have a range of vacancies for support workers.**

**See page 22 for details**

## T O'ROURKE

All plastering work undertaken

No job too small

**FREE ESTIMATES**



**Contact Troy on:**

01380 698993

or 07968 634689

**PHILIP HALE**  
**Clinical Sports & Remedial  
 Massage Therapist**

*Promoting a healthy body and mind*  
**PRE TREATMENT POSTURAL ASSESSMENT**

**Soft Tissue Massage**  
**SPORTS INJURIES**

**Training & Muscle Conditioning**  
**Preparation**

**TREATMENT & PREVENTION OF: MUSCLE  
 INJURY, BACK PAIN, POOR POSTURE AND  
 EVERYDAY STRESSES & STRAINS**

**Pre, Inter & Post Event Treatment &  
 Recovery**

**WILTSHIRE BASED & MOBILE CLINIC**

**Please call for an appointment**

**TELEPHONE: 07825180179**

**EMAIL: reception@philiphalesportsclinic.co.uk**

**WEBSITE: www.philiphalesportsclinic.co.uk**

**INDUSTRY MEMBERSHIP AT THE  
 LONDON SCHOOL OF SPORTS &  
 REMEDIAL MASSAGE**

**SPANISH TUITION**

Native language tutor offering Spanish lessons and Translation

- \* **GCSEs and A levels:** experience on preparing students for various exams: AQA, Edexcel, Common Entrance & International Baccalaureate.
- \* **Adult tuition** to all levels: beginners, intermediate & advance.
- \* **References** available if required.
- \* **Contact** Patricia Córdoba on:

**pcordoba@hiberniatype.com**

**mobile no.: 0788 496 20 79**



**PAINTING & DECORATING SERVICES**

**Your friendly, female decoratress!**

All decorating or painting projects considered,  
 including children's murals

**I am tidy, reliable and competitively priced**

**CallCarolynn on 07881 200218**

or email [ceecedecoratress@gmail.com](mailto:ceecedecoratress@gmail.com)

**Sudoku** (medium this month)

	6							
5			9			8		
		4		2	8	5	3	
		5	7		9			8
				8				
		9	2		5			6
		1		6	3	4	7	
9			5			3		
	4							

**Last Month's Solution**

7	1	6	2	4	3	9	8	5
4	3	2	9	8	5	7	6	1
5	9	8	7	1	6	3	4	2
1	6	9	8	7	4	5	2	3
3	8	7	5	6	2	1	9	4
2	4	5	3	9	1	6	7	8
9	7	4	1	3	8	2	5	6
6	2	1	4	5	9	8	3	7
8	5	3	6	2	7	4	1	9

**Mini Sudoku** (easy this month)

Insert the numbers 1 to 6 in the blank boxes so that each of the six separate areas of the puzzle and each line vertically and horizontally contains each number only once.

4	2			5	
	6	1			
				6	2
3	4		6		
6				4	3

**Last Month's Mini  
 Sudoku Solution**

4	6	1	3	5	2
5	3	2	1	4	6
6	1	5	4	2	3
2	4	3	6	1	5
3	5	4	2	6	1
1	2	6	5	3	4

# Quick Reference List of Advertisers

Advertiser	Page
<b>FOOD:</b>	
H S Stiles & Son Ltd	46
Rowde Village Shop	various pages
Silkwise Catering	34
The Farm Cookery School	13
Netherstreet Beef	13
<b>FUNERAL DIRECTORS ETC:</b>	
Charles S Winchcombe & Son Ltd	37
M J Sly (Memorial Stonemasons)	52
John Stuart Funeral Services	42
D J Bewley Funeral Directors	33 & 45
<b>TECHNICAL/PROFESSIONAL SERVICES:</b>	
King Mortgages	36
The PC Doctor (Ian Diddams)	6
Dolman Audio Visual (TV & Hi Fi repairs)	50
Photocopying & Laminating Service	11
Spanish Tuition	36
Become a support worker	41
Rudi Dalby - Power of Attorney	19
Original Pet Portraits by local artist	31
Learn to draw Plants	55
<b>HOUSE MAINTENANCE:</b>	
Duvet Cleaning (Hft)	49
House Cleaning (Martina)	48
Painter & Decorator (Lawrence Plumb)	4
Plasterer (T O'Rourke)	50
Adams Renovations	40
Hestia Soft Furnishings	5
Building Contractors (Gaiger Brothers)	45
KFR (used furniture and white goods)	6
Cee Cee Painting & Decorating	51
Sooty & Swept - Chimney Care	41
Skip Hire	48
<b>GARDEN SERVICES:</b>	
Help in your Garden – Helen	24
Tree Surgery - Trevor Hale	43
Tree Surgery – Tom Ashpole	26
<b>PUBS/RESTAURANTS/CAFES/B&amp;Bs:</b>	
The Cross Keys	42
The Rowdey Cow	39
Vine Cottage B&B	41
The Owl	38
Avalon Lodge B&B	40
The George & Dragon	44
St Matthew's Church Cafe	22
<b>HEALTH AND FITNESS:</b>	
Clinical Sports & Remedial Massage	51
Active Plus for over 60s	36
The Tranquil Moment Health & Beauty	40
Beechwood Beauty	36
Wiltshire Mind	40
Theo Wildcroft Yoga Classes	48
The Sycamore Centre	31
Pilates Classes	25
Cloud Nine Therapies	19

<b>PETS &amp; LIVESTOCK:</b>	
Whistley Canine Country Club	38
Greyhound Rescue	52
<b>MISCELLANEOUS:</b>	
Logs and Kindling	25
Wiltshire Bobby Van Trust	45
Nursery – Townsend Barn	39
Canal Boat Rental – Foxhangers	38
Rowde Village Website	42
Car Sales, MOTs & Servicing	36
Rowde Toddler Group	26
Claire Perry	24
4Children	39
J F Chimney Sweep	19
Arts Together - Ageing Creatively	43
Hair at Home Rowde	43
Recruiting Host Families	19
<i>And please remember to mention where you saw the advert when you contact any of our advertisers! Ed</i>	



## Greyhound Rescue West of England

Greyhound Rescue West of England is an independent greyhound rescue charity, dedicated to the rescue, rehabilitation and rehoming of abused and abandoned greyhounds and greyhound crosses. If you would like to rehome a greyhound or greyhound cross or volunteer for GRWE, please contact us for more information.

**Email: [enquiries@grwe.com](mailto:enquiries@grwe.com)**  
**Visit: [www.grwe.com](http://www.grwe.com)**  
**Call 07000 785 092**

Modern & Traditional

Designed Memorials

## M J SLY

Memorial Stonemason - New Memorials  
 Additional Inscriptions - Restorations  
 Free Home Visits & Brochure

**Tel: Marlborough (01672) 516797**  
**[www.mjsly.co.uk](http://www.mjsly.co.uk)**  
**Email: [martin@mjsly.co.uk](mailto:martin@mjsly.co.uk)**  
 Workshop & Showroom at  
 Pelhams Court, London Road  
 Marlborough



# Quick Reference Contacts and Village Guide

Listed below in alphabetical order are the various village organisations with contact names and telephone numbers

## Allotments

Chris Stevens, Tel: 01380 738438

## Bell Ringing

Friday evenings, Bell Tower, St Matthew's Church at 7.30pm  
Contact Richard Heath  
on 01380722379

## Bingo

Mondays 8 pm in Village Hall

## Charities

Rowdeford Charity Trust  
trustees@rowdefordcharity.org.uk  
www.rowdefordcharity.org.uk

## Children's Art & Craft Classes

Hayley Mitchell 01225458679  
hayleymitchell@thecreationstation.co.uk

## Church Coordinator

Benefice Administrator:  
Sarah Bowler 07876142112

## Church Choir

Junior Choir Practice Thursdays  
at 6.45 pm, Portia Broomfield  
07514047878  
Senior Choir Practice Thursdays  
at 7.15 pm, Gavin Moss  
01380 729160 / 07771780016

## Church Wardens

Michael Comwell Tel: 01380 722855  
Gavin Moss Tel: 01380 729160

## Doctor

For list of doctors contact the  
Health Commission, Pans Lane,  
Devizes, Tel: 0300 111 5717

## Football

John Dalley, Tel: 727094

## Footpaths

Ivan Whittaker-Axon 01380 728669

## Garage

Slades of Devizes Tel: 727755

## Hospitals

Devizes Community Hospital  
Tel: 723511  
Chippenham Community Hospital  
Tel: 01249 447100  
Trowbridge Community Hospital  
Tel: 01225 711300

## Ladies Club

Held in Village Hall on last Tuesday  
in the month at 8 pm.  
Mrs Di Buckland, Tel: 723049

## Local Councils

Wiltshire Council  
Tel: 0300 4560100  
Devizes Town Council 722160

## Neighbourhood Police Team

Jo Newbury Rural Beat Manager  
PCSO Georgina Dodd  
Ring 101  
Google devizes npt to contact the  
team on  
www.wiltsmessaging.co.uk>devizes

## Parish Council

Chair - Mr John Hawkins  
Tel: 07929 424781  
Clerk - Mrs Rebekah Jeffries  
Tel: 01380 720988  
**PC Repairs** - 07833696328  
ian@pcdoctor-devizes.co.uk

## Playing Fields

For playing field bookings  
please contact the Parish  
Council Clerk on 01380 720988  
rowdeparishcouncil@gmail.com

## Police

Devizes Police Tel: 101

## Pubs/Restaurants

Cross Keys, Tel: 739567  
George & Dragon, Tel: 723053  
Rowdey Cow Cafe, Tel: 829666

## Rifle Club

Practice Wednesdays, Matches  
Thursdays in Village Hall.  
Laurence Plumb, Tel: 728174

## Roads/Pavements

'My Wiltshire App or 03004560100

## Rowde Court Studios

Ann Swan, Tel: 01380 724788

## Rowde Rainbows

Meet: Tuesdays 6.15 to 7.15pm  
Contact: Pam Ridley 01380 730442  
Email: RowdeRainbows@gmail.com

## Rowde Village News

Alan Watters, Tel: 01380 724788

## Rowde Village Hall

Enquiries - Tel: 07926952631  
Bookings - 722497 (after 6 pm)

## Rowde C of E Primary Academy

High Street, Rowde SN10 2ND  
Head teacher - Lorraine Colquhoun  
723991

## Rowdeford Special School

Head Teacher  
Mr M Loveridge Tel: 850309

## Hft (ex Self Unlimited)

Rosa Lancaster, Tel: 725455

## Sewing Circle

Ring Yvonne on 01380 728745

## St Matthew's Flower Guild

Liz Ibbetson, Tel: 720630  
Flowers for all occasions,  
Weddings, Funerals &  
Anniversaries

## TAXI

R H Reeves 725072  
J Dalley 07592 063789

## Toddler Group

Village Hall Thursdays 9.30-11.30

## Tuesday Afternoon Club (60s+)

Held in Village Hall first Tuesday in  
the month at 2.30 pm.  
Mrs D Ellis, Tel: 722655

## Veterinary Surgeries

Estcourt - Tel: 723687  
McQueens - Tel: 728505  
The Paddock - Tel: 813202

## Village Fete - Lisa Wills

Enquiries - Tel: 01380 730078

## Village Shop

Enquiries - Tel: 01380 739800

## Website

www.rowdevillage.org  
rowdeparishcouncil@gmail.com  
or contact Rebekah 01380 720988

## Youth Club

Iain Marr 07540017184

# Village Diary



13 February	<b>Parish Council Meeting</b>
14 February	<b>Valentines Evening</b> (see page 9)
14 February	<b>Valentines Evening</b> (see page 44)
22 February	<b>Gin, Anti-Pasta &amp; Pudding Tasting</b> (see page 44)
23 February	<b>Mike Barham at The Owl</b> (see page 38)
27 February	<b>Another Stewsday</b> (see page 34)
5 March	<b>Village Hall AGM</b> (see pages 4 & 5)
7 March	<b>Charity Quiz Night</b> (see page 38)
13 March	<b>Parish Council Meeting</b>
29 March	<b>Spring Concert</b> (see page 55)
30 March	<b>Jamie R Hawkins at The Owl</b> (see page 38)
31 March	<b>Mothering Sunday</b> (see page 44)
3 April	<b>Parish Council Meeting (1st Wednesday of month due to Easter holidays)</b>
5 April	<b>Annual Quiz at Hft</b> (see page 23)
13 April	<b>BRIC A BRAC and BOOK SALE</b> (see page 4)
4 May	<b>PLOUGHMAN'S LUNCH</b> (see page 4)
8 May	<b>Parish Council Meeting</b>
23 May	<b>Village Meeting, 7.30pm Rowde Primary Academy</b>
3 August	<b>ANNUAL FLOWER SHOW</b> (see page 4)
15 September	<b>PLant Fair</b> (see page 23)
September or October	<b>PLOUGHMAN'S LUNCH</b> (see page 4)
30 November	<b>CHRISTMAS BAZAAR</b> (see page 4)
All Tuesdays	<b>St Matthew's Cafe</b> (see page 22)

## **Updating the Diary or Village Guide**

*If you would like to add an event to the Village Diary (this page) or amend an entry in the contacts page (previous page), please email details to [watters.alan@gmail.com](mailto:watters.alan@gmail.com) or phone 01380 724788*

***The magazine team, on behalf of all the readers of the Rowde Village News, would like to give a huge thank-you to all the 20+ volunteers in the village who go out in all weathers to personally deliver your magazine to your door.***

## **New Bus timetable from 30th April 2017 for Service numbers 33 & 33X**

### **Monday to Friday (except Public Holidays)**

Rowde, Cross Keys 0747 0923 1007 1037 1137 1237 1337 1437 1722 1806R

Devizes, Market Place 0755 0929 1013 1043 1143 1243 1343 1443 1728 1811R

Rowde, Cross Keys 0808 0938 1038 1138 1238 1338 1418 1555 1740 1820

Chippenham Bus Stn 0839 0959 - \* - 1059 - \* - 1359 1449 1626 1813 - \* -

(- \* - ends at Calne)

**Additional journeys on** 1510 Devizes School via Caen Hill and Marsh Lane to Rowde

**Schooldays only:** 1525 Rowde School via Marsh Lane and Caen Hill to Devizes Market Place

### **Saturday (all journeys are on service 33)**

Rowde, Cross Keys 0807 0922 1022 1222 1352 1622 1752

Devizes, Market Place 0813 0928 1028 1228 1358 1628 1758

Rowde, Cross Keys 0820 0935 1105 1235 1435 1635

Chippenham Bus Stn 0851 1006 1136 1306 1506 1706

**Note: If going to Chippenham Railway Station, add approximately 6 minutes to times shown**

**For the most reliable and up to date source of information please go to [www.faresaver.co.uk](http://www.faresaver.co.uk) or for further details of this service or to report a problem please call 01249444444 or email [enquiries@faresaver.co.uk](mailto:enquiries@faresaver.co.uk)**

# Learn to Draw Plants in Vivid Colour with Local Artist

Ann Swan SBA at Rowde Court Studios, Marsh Lane, Rowde

**£20 discount off your first workshop if you live in Rowde**

**ONE-DAY STUDIO WORKSHOPS - £70 per day (£25 discount for 5)**

Suitable for all levels including beginners, equipment can be borrowed for the day

10.30am - 3.30pm including a light lunch, coffee, teas and cake!

**21st February, 19th March, 25th April, 22nd May & 20th June 2019**

**TWO-DAY STUDIO WORKSHOPS 2019 - £170**

Suitable for students with some coloured pencil experience or who have been to a one-day workshop

10am - 4pm Buffet lunch, teas, coffee and cakes included

**5th-6th March** 'Creative Composition' - Pushing the Boundaries

**30th April - 1st May** 'Natural Objects' - Focussing on Feathers and Bark

**26th-27th June** 'Creating Contrast with Tonal Values'

**17th-18th July** 'Getting Started with Coloured Pencil' - Beginner's Workshop

- Plant material will be provided but you are welcome to bring your own.
- The studio is equipped with drawing boards, magnifying glasses and light boxes
- Ann has a studio shop and an on-line shop selling pencils and equipment at competitive prices
- A deposit of £30 will secure a place
- Booking online at [www.annswan.co.uk](http://www.annswan.co.uk) or contact Ann on 01380 724788



**WHITE HORSE OPERA**

# SPRING CONCERT

INCLUDES PIECES FROM OUR MAIN OPERA CARMEN AND OUR TOUR  
G&S' MIKADO WITH GUEST TENOR SEBASTIANO CIPOLLA

**FRIDAY 29TH MARCH 7.30PM**  
**DEVIZES TOWN HALL**  
TICKETS £10 FROM DEVIZES BOOKS AND  
[WWW.TICKETSOURCE.CO.UK/WHITEHORSEOPERA](http://WWW.TICKETSOURCE.CO.UK/WHITEHORSEOPERA)

SIX  
POPULAR  
WALKS.

IN THE PARISH

OF



ROWDE.

SIX  
POPULAR  
WALKS.

IN THE PARISH

OF



ROWDE.

# ROWDE VILLAGE WALKS

Did you know about this booklet?

Do you have some spare time to help update it?

We are looking for people to walk the walks &  
help revise and reprint the booklet under the  
lead of Barrie Barrett.

It is a great asset to the village and will help  
everyone to enjoy their countryside.

Please contact the Parish Clerk, on 01380  
720988; or e-mail  
[rowdeparishcouncil@gmail.com](mailto:rowdeparishcouncil@gmail.com)